



**Economic and Social
Council**

Distr.
GENERAL

ECE/TRANS/WP.29/2009/39
17 December 2008

Original: ENGLISH

ECONOMIC COMMISSION FOR EUROPE

INLAND TRANSPORT COMMITTEE

World Forum for Harmonization of Vehicle Regulations

One-hundred-and-forty-seventh session
Geneva, 10-13 March 2009
Item 4.2.33 of the provisional agenda

1958 AGREEMENT

Consideration of draft amendments to existing Regulations

Proposal for Supplement 4 to the 02 series of amendments to Regulation No. 107
(M₂ and M₃ vehicles)

Submitted by the Working Party on General Safety Provisions */

The text reproduced below was adopted by the Working Party on General Safety Provisions (GRSG) at its ninety-fifth session (ECE/TRANS/WP.29/GRSG/74, paras. 9, 10 and 21). It is based on ECE/TRANS/WP.29/GRSG/2008/19 as amended by para. 9 of the report, ECE/TRANS/WP.29/GRSG/2008/20 as reproduced in Annex II of the report and ECE/TRANS/WP.29/GRSG/2008/23 as amended by para. 21 of the report. It is submitted to WP.29 and AC.1 for consideration.

*/ In accordance with the programme of work of the Inland Transport Committee for 2006-2010 (ECE/TRANS/166/Add.1, programme activity 02.4), the World Forum will develop, harmonize and update Regulations in order to enhance performance of vehicles. The present document is submitted in conformity with that mandate.

Paragraph 2.15., amend to read:

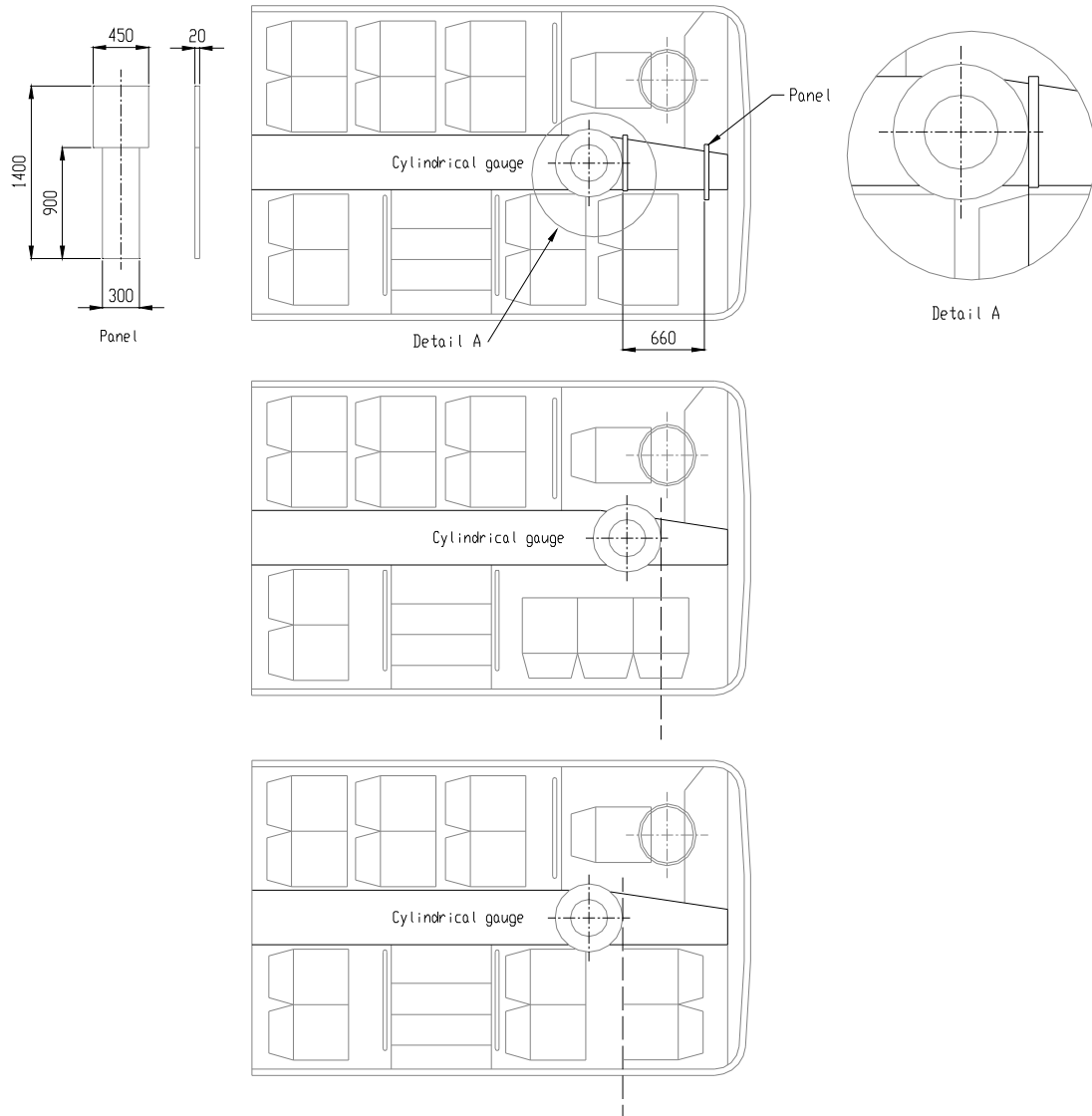
"2.15. "Gangway" means the space providing access by passengers from any seat or row of seats or each special area for wheelchair users to any other seat or row of seats or each special area for wheelchair users or to any access passage from or to any service door or intercommunication staircase and any area for standing passengers; it does not include:"

Annex 3, paragraph 7.6.2.3., amend to read;

"7.6.2.3. The exits (on each deck in the case of a double-deck vehicle) shall be placed in such a way that their number on each of the two sides of the vehicle is substantially the same. (This shall not imply the need to provide additional exits over and above the number specified in paragraph 7.6.1.). Any exits in excess of the required minimum number need not be substantially balanced on each of the two sides."

Annex 4, Figure 7, amend to read:

"Figure 7
FORWARD LIMITATION OF THE GANGWAY
(see Annex 3, paragraph 7.7.5.1.1.1.)



"

Annex 8, paragraph 3.6.1., amend to read:

"3.6.1. For each wheelchair user provided for in the passenger compartment there shall be a special area at least 750 mm wide and 1300 mm long. The longitudinal plane of the special area shall be slip resistant and the maximum slope in any direction shall not

exceed 5 percent. In the case of a rearward facing wheelchair complying with the requirements specified in paragraph 3.8.4., the slope in the longitudinal direction shall not exceed 8 per cent provided that this slope inclines upwards from the front end to the rear end of the special area.

In the case of a wheelchair space designed for a forward facing wheelchair, the top of preceding seat-backs may intrude into the wheelchair space if a clear space is provided as shown in Annex 4, Figure 22."
