



Informal document No. GRRF-61-24  
(61st GRRF, 5 - 9 February 2007,  
agenda item 6.4.)

## ASP- Additional Sidewall Protection

Presentation for GRRF Sixty-first Session  
February 5-7, 2007



### Definition ASP

- “ASP” (Additional Sidewall Protection) is an additional protective rubber layer applied to the sidewall of the casing for improving resistance against sidewall abrasion.”

- Purpose of ASP:

*...”enhancing safety and durability of tyres in urban use”....“to provide additional abrasion protection of the sidewall in aggressive urban usage”*



## How does it work?

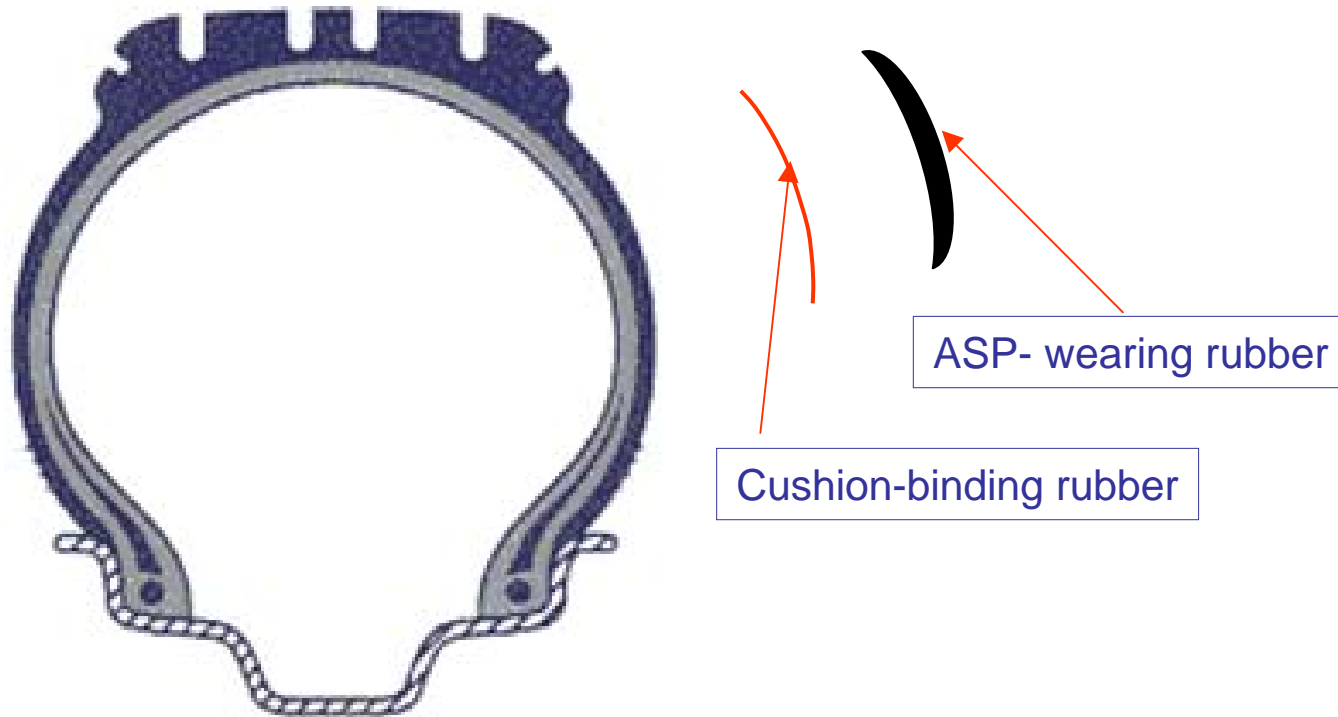
- Casing sidewall is inspected and buffed

### PRECURE:

- Cushion is applied
- Pre-cured ASP is applied

### MOLDCURE:

- Un-vulcanized wear rubber applied





## Application cushion





## Application of ASP





## ASP ready for vulcanization





### The “issue”

- For tyres with overall max section width limited to +2% the application of ASP might exceed max overall section width of ECE 109 :

315/80R22.5

315/70R22.5

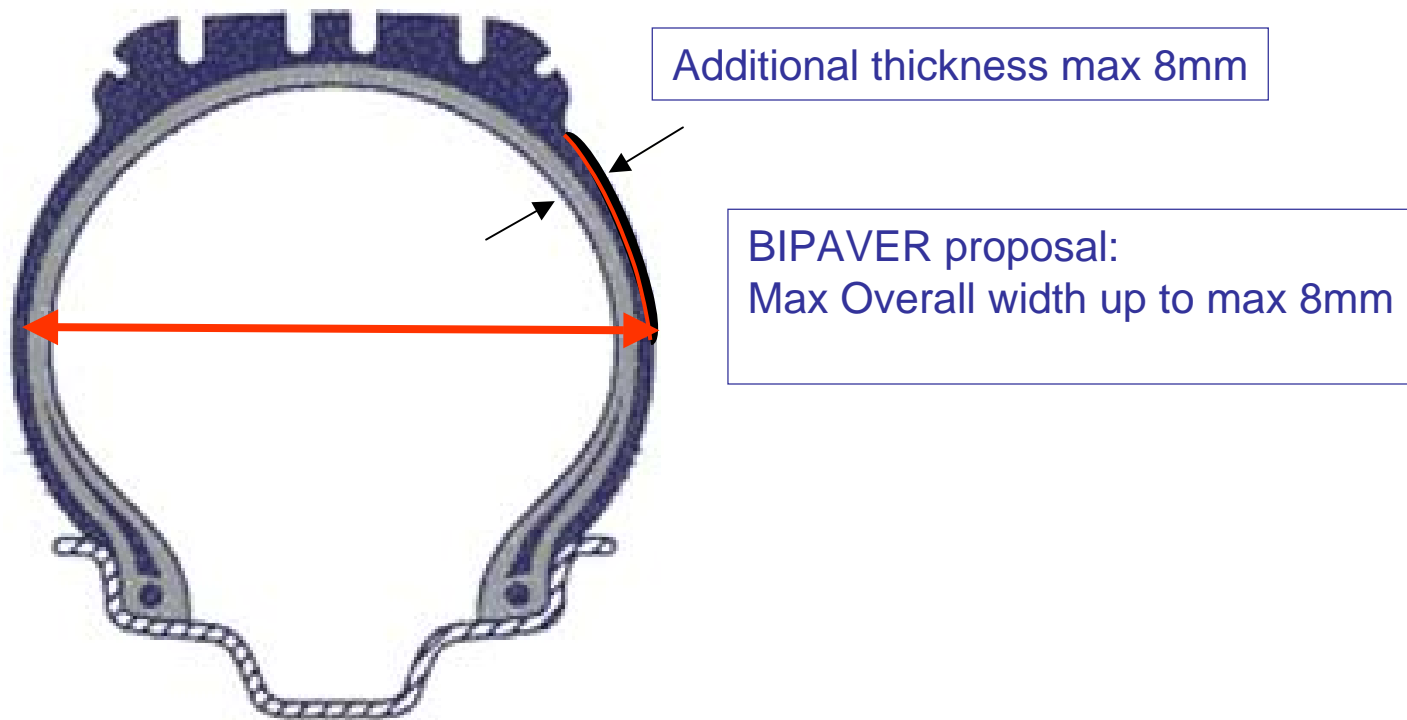
13R22.5

- The BIPAVER proposal only deal with tyres exceeding max ECE-R109 Overall section width.



### Final Product

- Total section width is Max 8 mm wider than max section width of a new original tire permitted by Reg. 54.

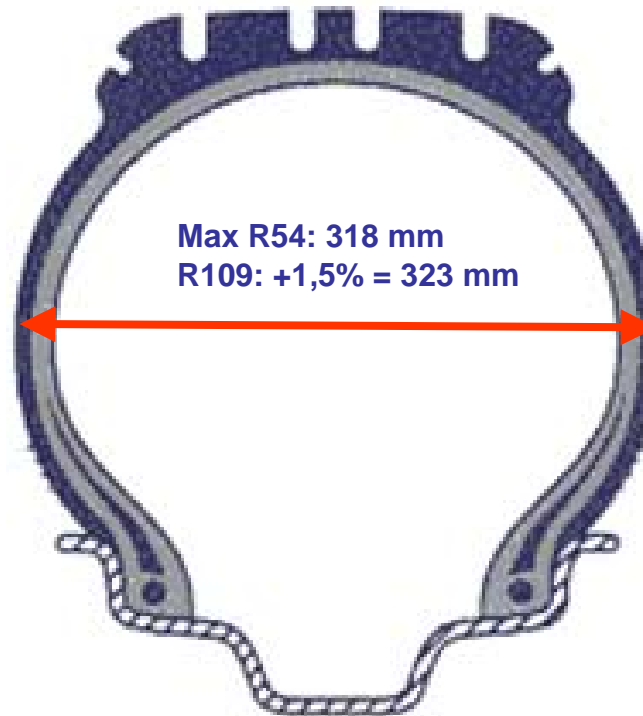






## Example: 315/80R22.5

Amended ECE 109: Max R54 + 1,5 % = 323 mm





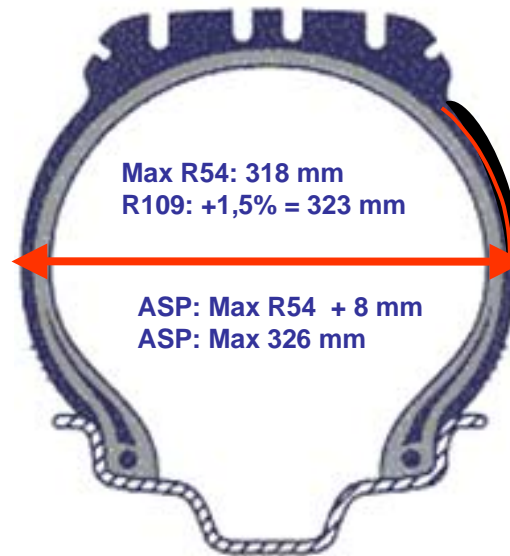
## Example: 315/80R22.5

Amended ECE 109: Max R54 + 1,5 % = 323 mm  
One side ASP only permissible

Facing inwards:

The word ASP

No additional reduction  
of dual spacing  
vs. amended ECE 109



Facing outwards:

The word ASP

Marking OUTSIDE