

# Workshop: UN/ECE & CBS

## Statistics on the long-distance transportation by buses and coaches



Maastricht, 29 November 2006

Statistics Netherlands

Frits Mullenders



# Workshop 'Buses'

## Presentation Statistics Netherlands:

1. Obligation:
2. Context and Definitions:
3. User needs:
4. Dutch situation:
5. Historical data:
6. → 2002 → future ..... ???



# Workshop 'Buses'

## 1. OBLIGATION:

- \* EG-Regulation 1108/70
- \* common questionnaires
- \* national authorities
- \* mobility (modal split)
- \* Kyoto



# Workshop 'Buses'

## 2. CONTEXT AND DEFINITIONS

- \* inland- or foreign traffic
- \* trip length
- \* public- or non-public transport
- \* national companies or  
all companies on national territory
- \* size of the buses
- \* buses or coaches



# Workshop 'Buses'

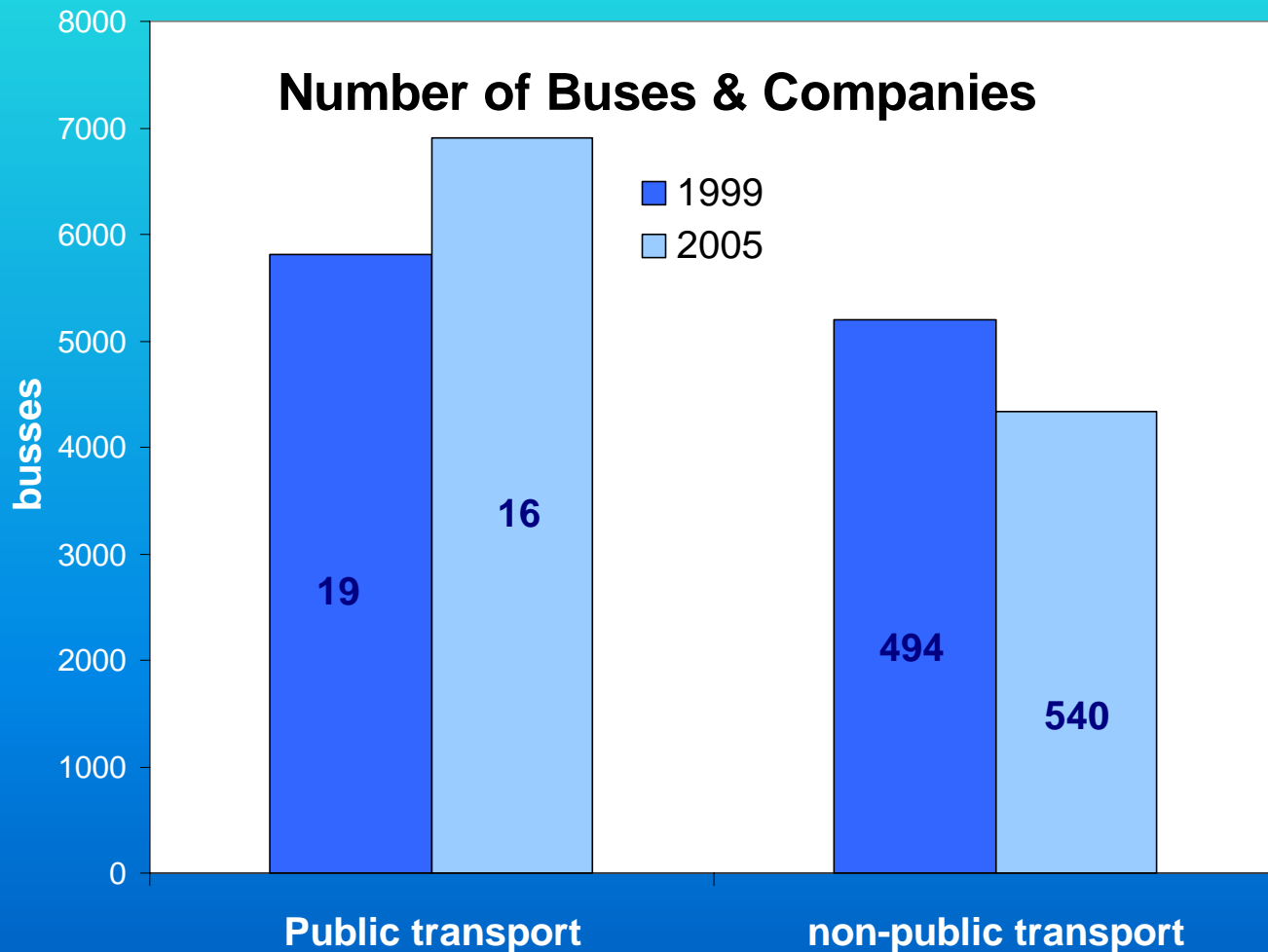
## 3. USER NEEDS:

- \* total number of buses
- \* number of companies and their number of buses: by public- and non-public transport
- \* number of passengers
- \* passenger kilometres
- \* vehicle kilometres
- \* mobility by bus
- \* transport performance by bus
- \* fuel consumption, emission etc.
- \* accidents with buses



# Workshop 'Buses':

## 4. DUTCH SITUATION:



# Workshop 'Buses'

## 4. DUTCH SITUATION: (in 1999)

|  |       |        |
|--|-------|--------|
| Total number of buses:                     |       | 11.006 |
| Bus Transport                              | (513) | 10.299 |
| national public transport                  | ( 19) | 5.805  |
| local authority                            | ( 4)  | 1.081  |
| interurban                                 | ( 15) | 4.724  |
| international public transport             | ( 5)  | 195    |
| non-public transport                       | (489) | 4.299  |
| Private/individual persons and foundations |       | 707    |



# Workshop 'Buses'

## 4. DUTCH SITUATION:

### Traffic performances, 1996

|                        | Traffic Performance |                               |                                       |  |     |       |                 |
|------------------------|---------------------|-------------------------------|---------------------------------------|--|-----|-------|-----------------|
|                        | total               | of which                      |                                       |  |     | buses | motor-<br>cycle |
|                        |                     | passenger car<br>delivery van | non articulated<br>vehicles:<br>lorry | articulated<br>vehicles<br>lorry + trailer |     |       |                 |
| mln vehicle-kilometres |                     |                               |                                       |  |     |       |                 |
| The Netherlands        | 110778              | 101430                        | 3254                                  | 4013                                       | 646 | 1435  |                 |
| Outside built-up areas | 81607               | 74012                         | 3079                                  | 3387                                       | 430 | 700   |                 |
| of which               |                     |                               |                                       |  |     |       |                 |
| Highways               | 47327               | 41874                         | 2110                                  | 2786                                       | 265 | 293   |                 |
| w.v. main roads        | 42119               | 37282                         | 1843                                  | 2497                                       | 236 | 261   |                 |
| secondary main road    | 5208                | 4592                          | 267                                   | 289  | 29  | 32    |                 |
| Provincial roads       | 17618               | 16231                         | 663                                   | 416  | 106 | 202   |                 |
| Other roads            | 16662               | 15907                         | 306                                   | 185  | 59  | 205   |                 |
| Inside built-up areas  | 29171               | 27418                         | 175                                   | 626  | 216 | 735   |                 |

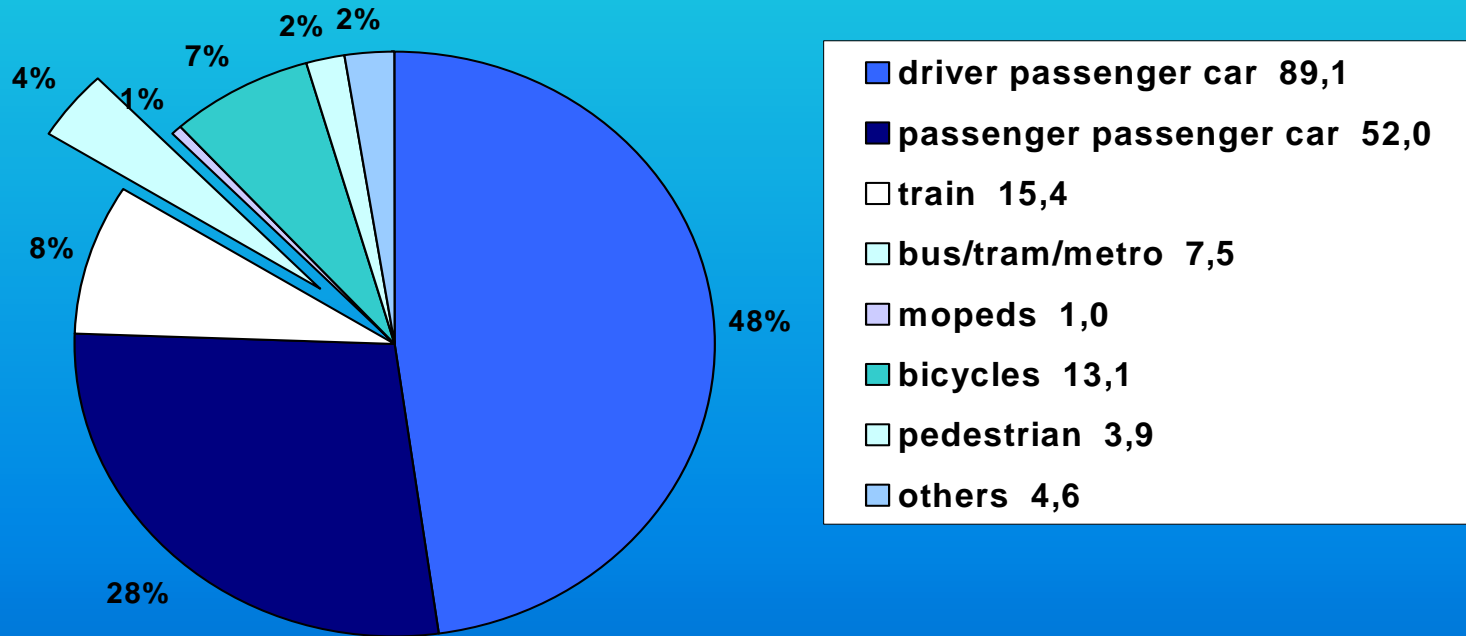




# Workshop 'Buses'

## 4. DUTCH SITUATION:

Passenger kilometres on Dutch territory



# Workshop 'Buses'

## 5. HISTORICAL DATA:

- \* numbers of journeys
- \* passengers
- \* vehicle kilometres
- \* passenger kilometres



# Workshop 'Buses'

## 5. HISTORICAL DATA:

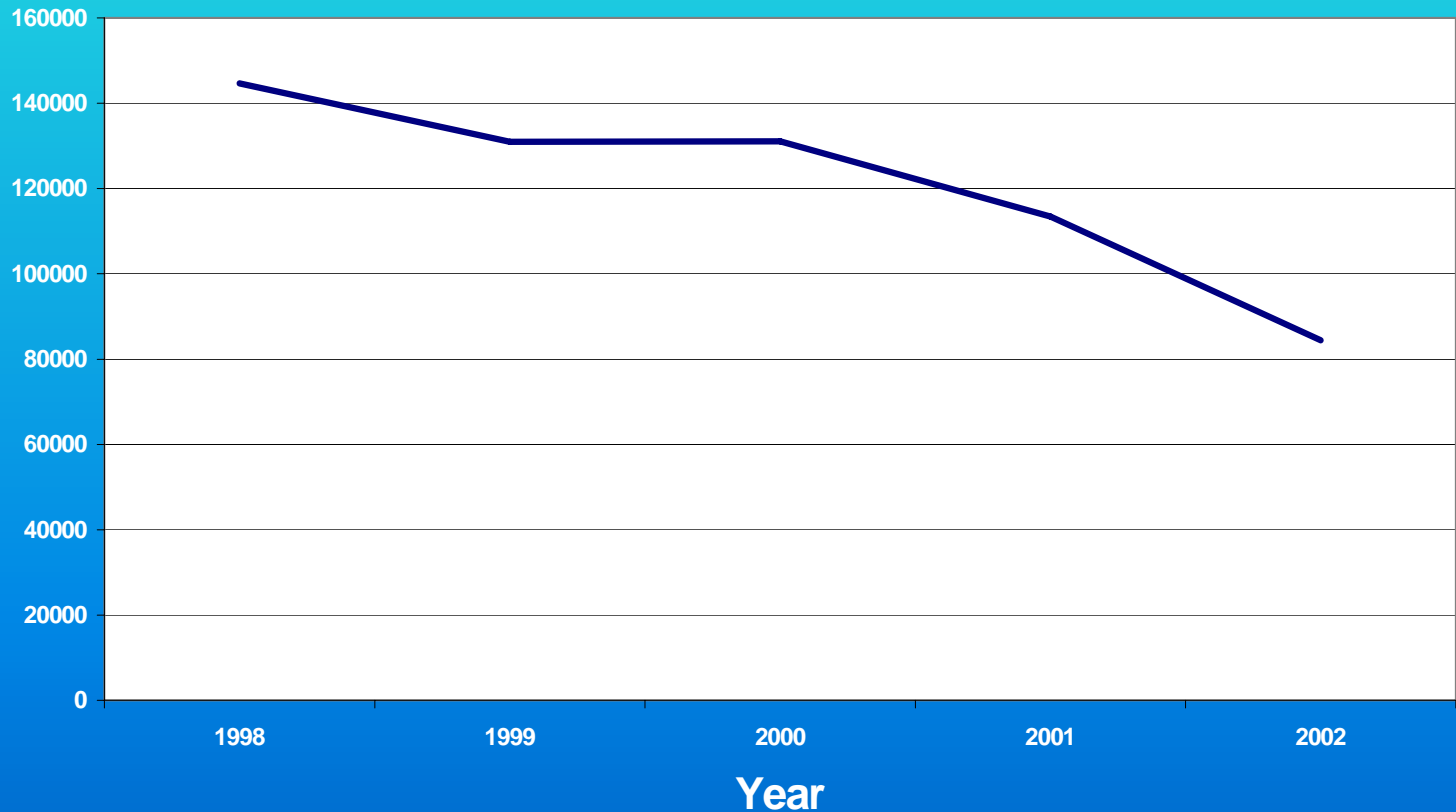
Passenger-kilometers by bus(x million)

|      | Transport Total |                     |                       |                      |
|------|-----------------|---------------------|-----------------------|----------------------|
|      |                 | public<br>transport | national<br>transport | foreign<br>transport |
| 1990 | 14246           | 5530                | 4212                  | 4504                 |
| 1991 | 14408           | 6306                | 3885                  | 4217                 |
| 1992 | 14351           | 6349                | 3863                  | 4139                 |
| 1993 | 14408           | 6240                | 4036                  | 4131                 |
| 1994 | 14558           | 6211                | 4000                  | 4346                 |
| 1995 | 18848           | 6048                | 4302                  | 4498                 |
| 1996 | 14952           | 6210                | 4251                  | 4491                 |
| 1997 | 14726           | 6207                | 4095                  | 4424                 |
| 1998 | 15215           | 6348                | 4486                  | 4381                 |

# Workshop 'Buses'

## 5. HISTORICAL DATA:

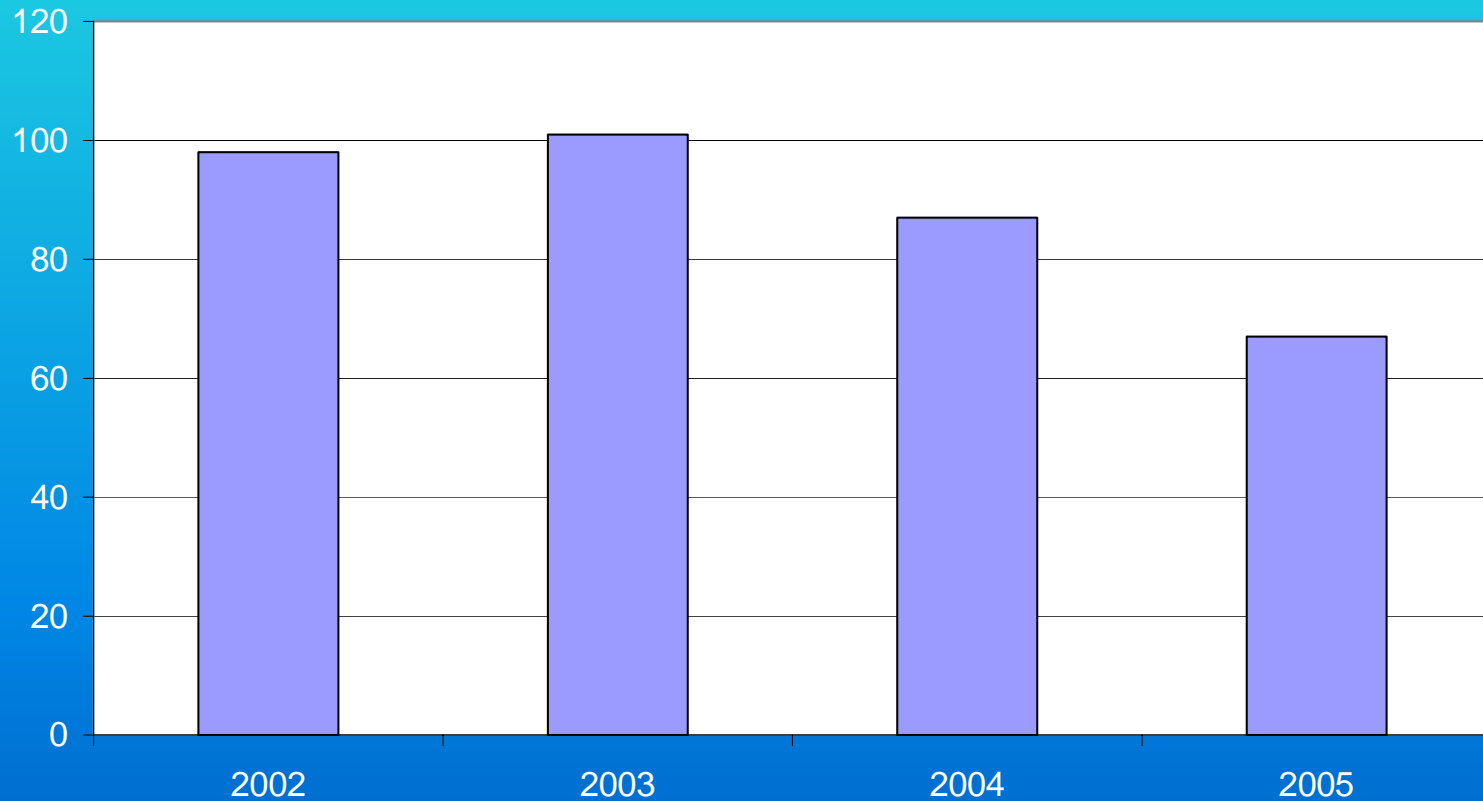
Foreign traffic: journey by buses



# Workshop 'Buses'

## 5. HISTORICAL DATA:

Trips by buses (X1000)



# Workshop 'Buses'

6. → 2002 → .....

- \* no obligations for companies
- \* no current figures
- \* in the Netherlands: NEA



# **Workshop 'Buses'**

## **DISCUSSION & QUESTIONS**

**Thank you for your attention**

**Maastricht, 29 November 2006**

