

## Canadian Pedestrian Fatalities and Injuries 1990 – 2000

An overview of the pedestrian fatalities and injuries data from 1990 - 2000, including detailed information for 2000.

### DETAILED FINDINGS

Figure 1 indicates the Canadian pedestrian injuries and fatalities from 1990 to 2000. During that period, fatalities decreased from 584 to 372, a 36% reduction. Also, injuries decreased from 2296 to 1543, a decrease of 33%.

FIGURE 1

Pedestrian injuries and fatalities per year

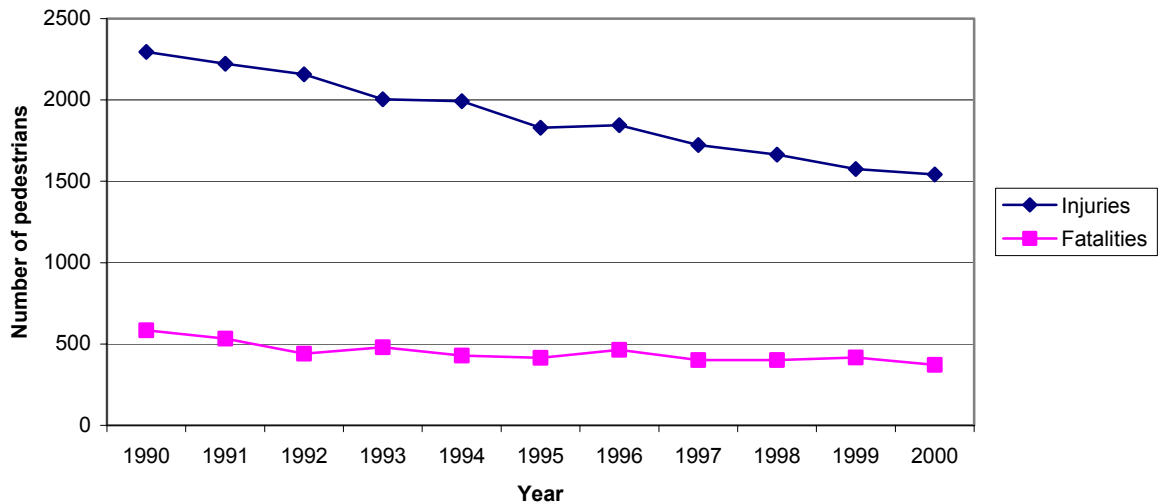


Figure 2 indicates the fatalities and injuries by pedestrian action for 2000.

FIGURE 2

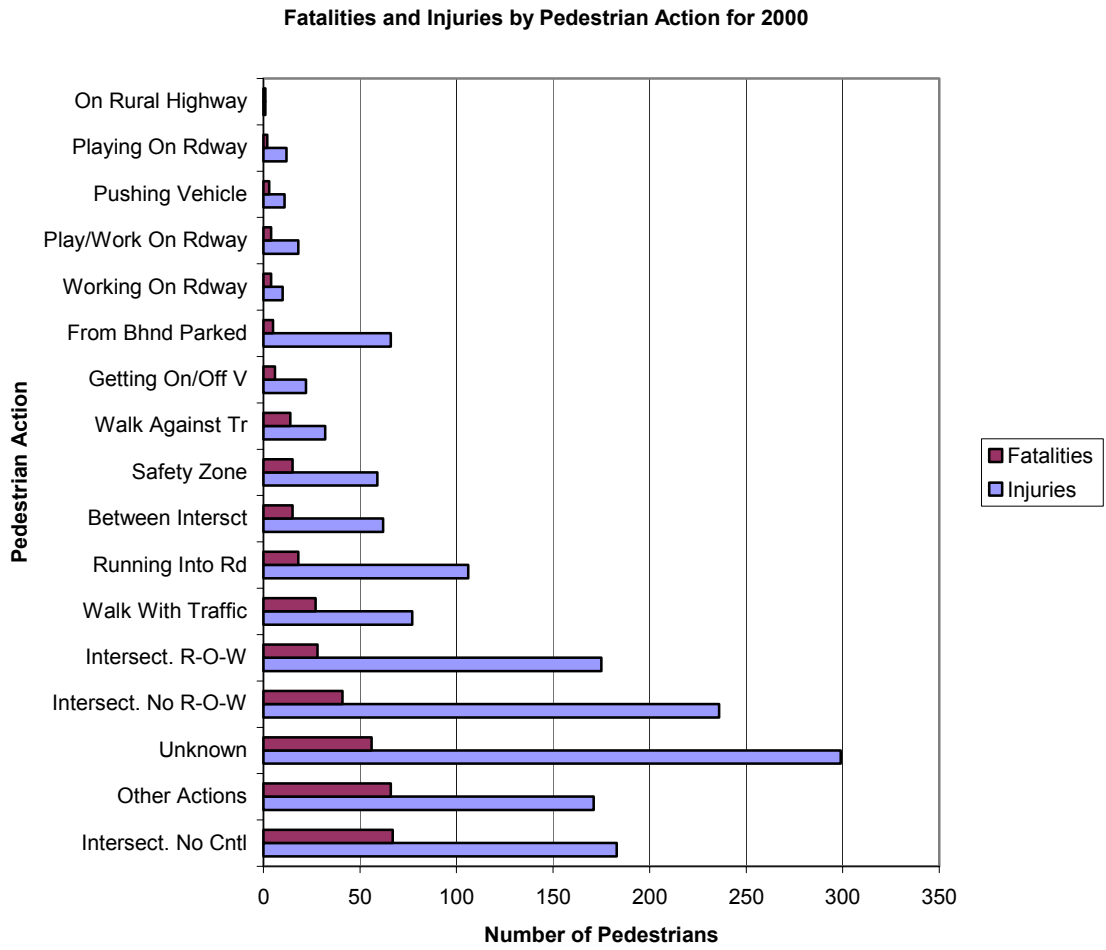


Table 1 indicates the fatality rate per 100,000 of population. Québec, British Columbia, New Brunswick and P.E.I. achieved the largest decrease in fatality rate.

TABLE 1

Pedestrian Fatality Rate / 100,000 of Population															
Provinces/Ter.	Total fatalities			Population (000s)			% Dist. Of Fatalities			% Dist. Of Pop,			Fat, Rate/100,000		
Year	1990	1995	2000	1990	1995	2000	1990	1995	2000	1990	1995	2000	1990	1995	2000
Ontario	154	126	112	10300	10965	11669	26,4	30,3	30,1	37,2	37,4	37,9	1,5	1,1	1,0
Québec	180	131	104	7004	7241	7372	30,8	31,5	28,0	25,3	24,7	24,0	2,6	1,8	1,4
British Columbia	108	56	53	3291	3784	4064	18,5	13,5	14,2	11,9	12,9	13,2	3,3	1,5	1,3
Alberta	45	39	38	2548	2740	2997	7,7	9,4	10,2	9,2	9,3	9,7	1,8	1,4	1,3
Saskatchewan	10	15	18	1007	1014	1024	1,7	3,6	4,8	3,6	3,5	3,3	1,0	1,5	1,8
Manitoba	14	14	15	1106	1130	1148	2,4	3,4	4,0	4,0	3,8	3,7	1,3	1,2	1,3
New Brunswick	30	11	15	740	752	757	5,1	2,6	4,0	2,7	2,6	2,5	4,1	1,5	2,0
Nova Scotia	21	16	8	910	928	941	3,6	3,8	2,2	3,3	3,2	3,1	2,3	1,7	0,9
Newfoundland	14	7	6	578	568	539	2,4	1,7	1,6	2,1	1,9	1,8	2,4	1,2	1,1
P.E.I.	7	0	2	131	135	139	1,2	0,0	0,5	0,5	0,5	0,5	5,4	0,0	1,4
N.W.T.		1	1	59	42	42	0,0	0,2	0,3	0,2	0,1	0,1	0,0	2,4	2,4
Yukon	1	0	0	28	31	31	0,2	0,0	0,0	0,1	0,1	0,1	3,6	0,0	0,0
<b>Total</b>	584	416	372	27701	29354	30750	100,0	100,0	100,0	100,0	100,0	100,0	2,1	1,4	1,2

Figure 3, indicates a significant proportion of fatalities occur to the elderly, the 65+.

FIGURE 3

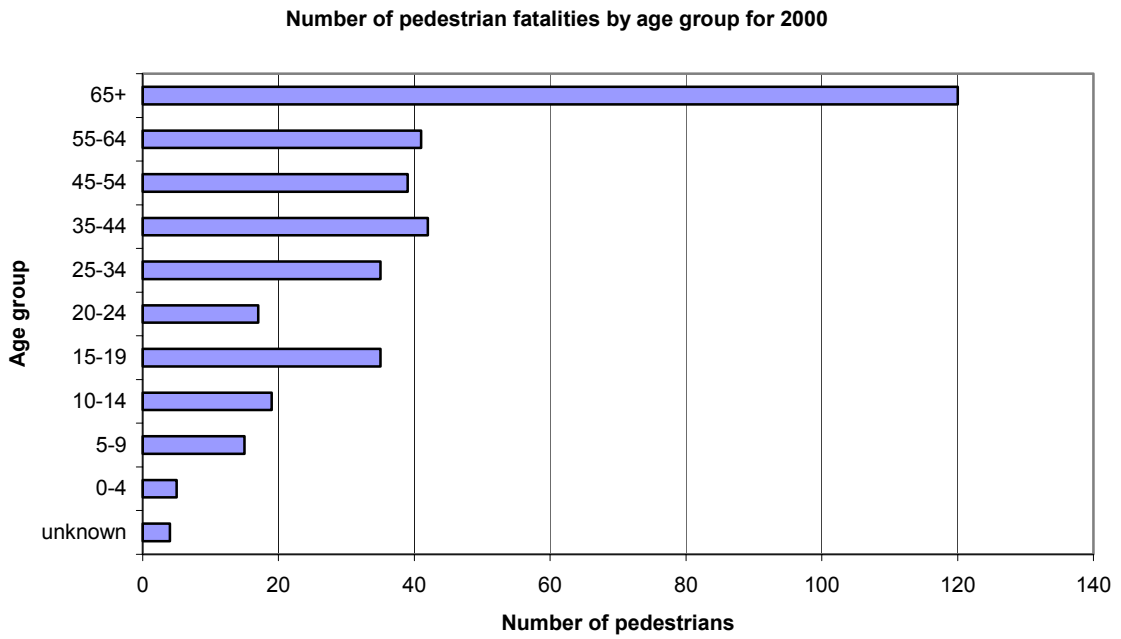


Figure 4, indicates a large proportion of collisions occur in the evening.

FIGURE 4

Number of Pedestrian Fatalities by Time Period for 2000

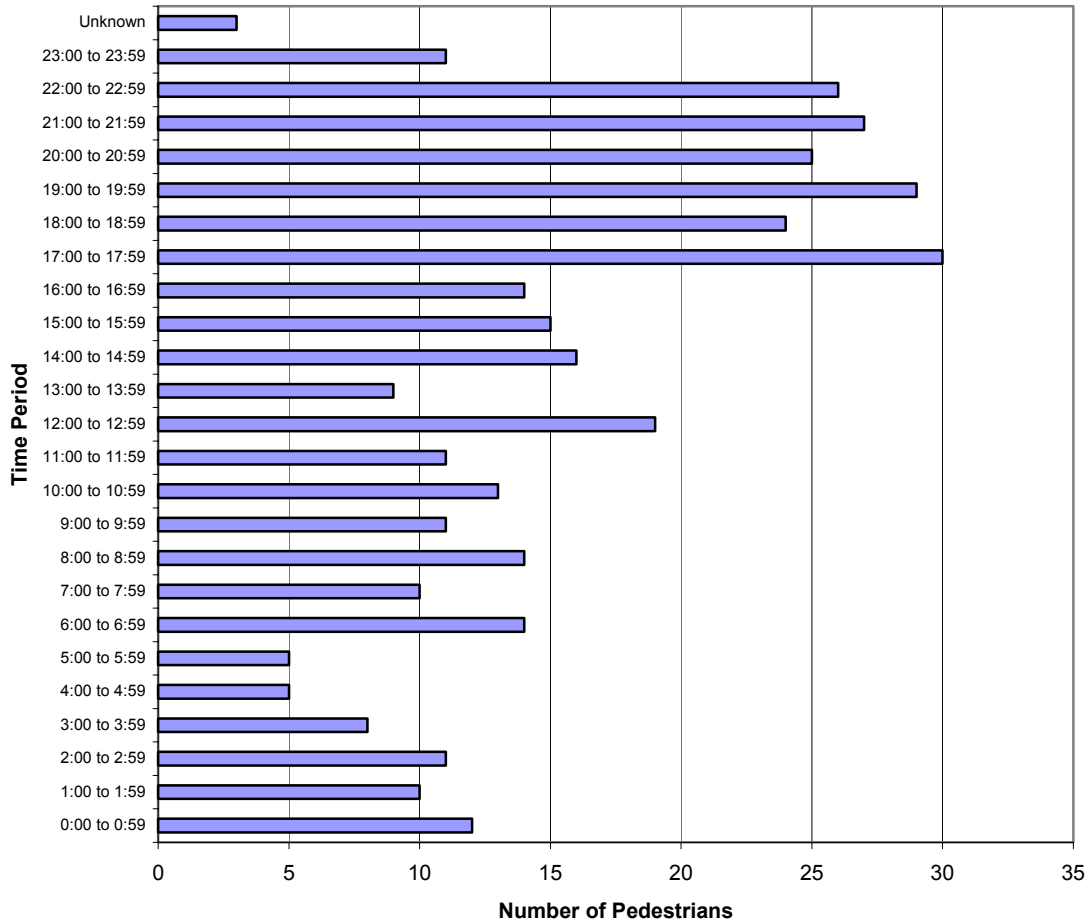
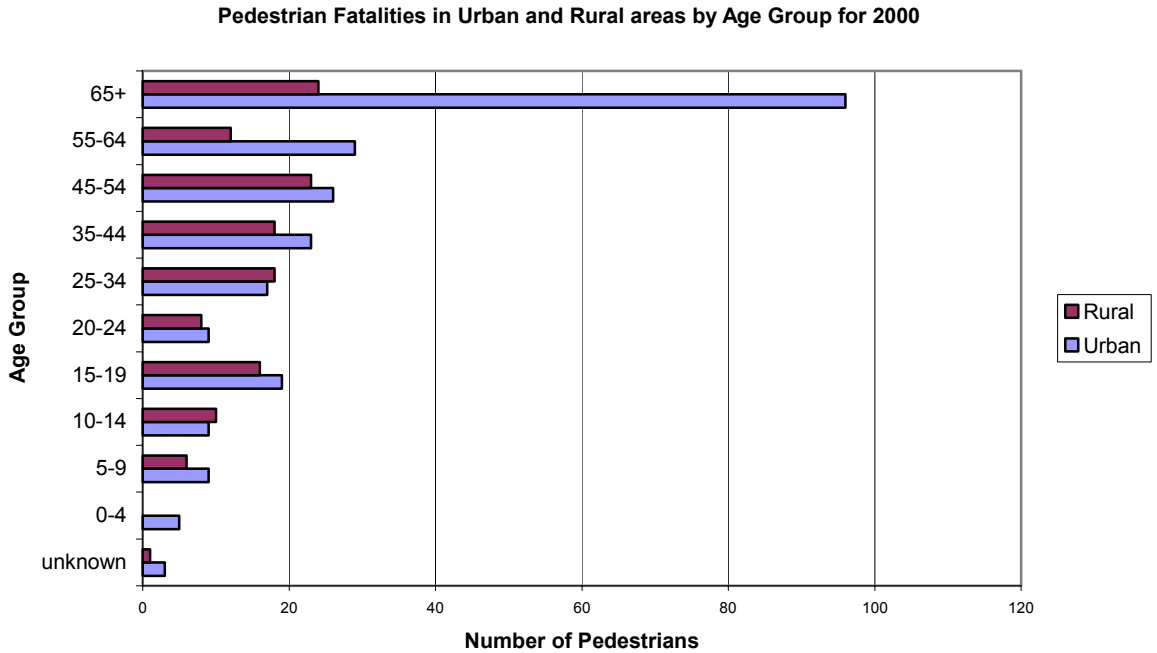


Figure 5, indicates a total of 245 fatalities occur in urban areas compare to 126 in rural areas for 2000. 49% more of the collisions occurred in urban vs rural areas. Some 39% of the urban fatalities were to the 65+ age group.

FIGURE 5



Figures 6 and 7 provide a comparison of the fatal and injury collisions by vehicle type.

FIGURE 6

Pedestrian Fatalities by Vehicle Type for 2000

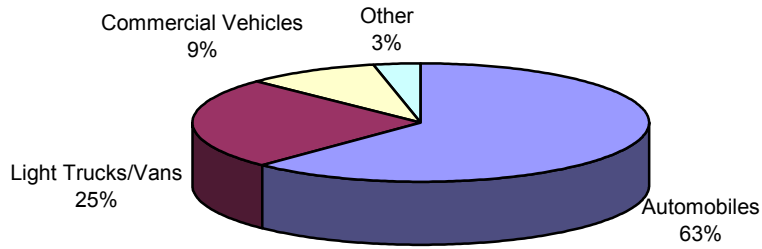


FIGURE 7

Pedestrian Injuries by Vehicle Types for 2000

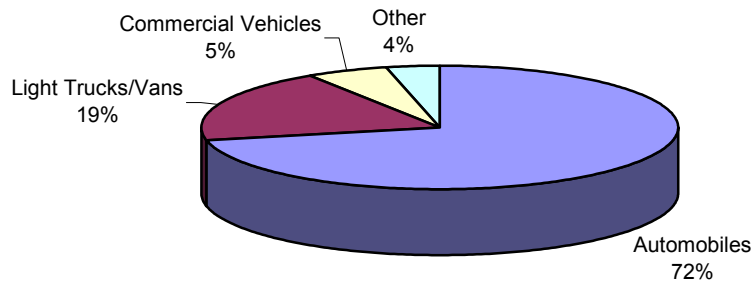


Figure 8 indicates that when 'Not Applicable' is not considered, 73% of the vehicle damage occurs at the front.

FIGURE 8

