

UNECE **TIR** SEMINAR 2007

PRESENTATION

BY

FRANS VAN DER RIJST

TECHNICAL EXPERT

TIR HANDBOOK

- BODY OF THE TIR CONVENTION, 1975**
- EXPLANATORY NOTES**
- COMMENTS**

ANNEX 2, ARTICLE 1

BASIC PRINCIPLES

(a) NO GOODS CAN BE REMOVED FROM OR INTRODUCED INTO, THE SEALED PART OF THE VEHICLE WITHOUT LEAVING OBVIOUS TRACES OF TAMPERING OR WITHOUT BREAKING THE CUSTOMS SEAL.

ANNEX 2, ARTICLE 1

BASIC PRINCIPLES

(b) CUSTOMS SEALS CAN BE SIMPLY AND EFFECTIVELY AFFIXED TO THEM

ANNEX 2, ARTICLE 1

BASIC PRINCIPLES

**(c) THEY CONTAIN NO CONCEALED
SPACES WHERE GOODS MAY BE HIDDEN**

ANNEX 2, ARTICLE 1

BASIC PRINCIPLES

**(d) ALL SPACES CAPABLE OF HOLDING
GOODS ARE READILY ACCESSIBLE FOR
CUSTOMS INSPECTION.**

ANNEX 2, ARTICLE 2

STRUCTURE OF LOAD COMPARTMENTS

**THE CONSTITUENT PARTS OF THE LOAD
COMPARTMENT SHALL BE ASSEMBLED
EITHER BY MEANS OF DEVICES WHICH:**

**➤ CANNOT BE REMOVED AND REPLACED
FROM THE OUTSIDE WITHOUT LEAVING
OBVIOUS TRACES** **or**

ANNEX 2, ARTICLE 2

STRUCTURE OF LOAD COMPARTMENTS

➤ **BY SUCH METHODS AS WILL PRODUCE A STRUCTURE WHICH CANNOT BE MODIFIED WITHOUT LEAVING OBVIOUS TRACES.**

ANNEX 2, ARTICLE 2

STRUCTURE OF LOAD COMPARTMENTS

THE **COMPETENT AUTHORITY** SHALL
DETERMINE WHAT JOINING DEVICES, AND
HOW MANY OF THEM, MUST FULFIL THE
REQUIREMENTS.

ANNEX 2, ARTICLE 2

STRUCTURE OF LOAD COMPARTMENTS

THE **COMPETENT AUTHORITY** SHALL MAKE SURE THAT THE CONSTITUENT PARTS SO ASSEMBLED CANNOT BE DISPLACED AND REPLACED **WITHOUT** LEAVING OBVIOUS TRACES.

ANNEX 2, ARTICLE 2

STRUCTURE OF LOAD COMPARTMENTS

JOINING DEVICES WHICH CAN BE REMOVED AND REPLACED FROM ONE SIDE WITHOUT LEAVING OBVIOUS TRACES, I.E. WITHOUT REQUIRING HANDLING FROM BOTH SIDES OF THE CONSTITUENT PARTS TO BE ASSEMBLED, SHALL NOT BE ALLOWED.

ANNEX 2, ARTICLE 2

STRUCTURE OF LOAD COMPARTMENTS

WHERE JOINING DEVICES (RIVETS, SCREWS, etc.) ARE USED, A SUFFICIENT NUMBER OF SUCH DEVICES SHALL BE **INSERTED FROM OUTSIDE**, TRAVERSE THE ASSEMBLED CONSTITUENT PARTS, **PROTRUDE INSIDE AND THERE BE FIRMLY SECURED**

ANNEX 2, ARTICLE 2

STRUCTURE OF LOAD COMPARTMENTS

HOWEVER, CONVENTIONAL RIVETS (i.e. RIVETS WHOSE PLACING REQUIRES HANDLING FROM BOTH SIDES OF THE ASSEMBLY OF CONSTITUENT PARTS) MAY ALSO BE INSERTED FROM THE INSIDE

ANNEX 2, ARTICLE 2

STRUCTURE OF LOAD COMPARTMENTS

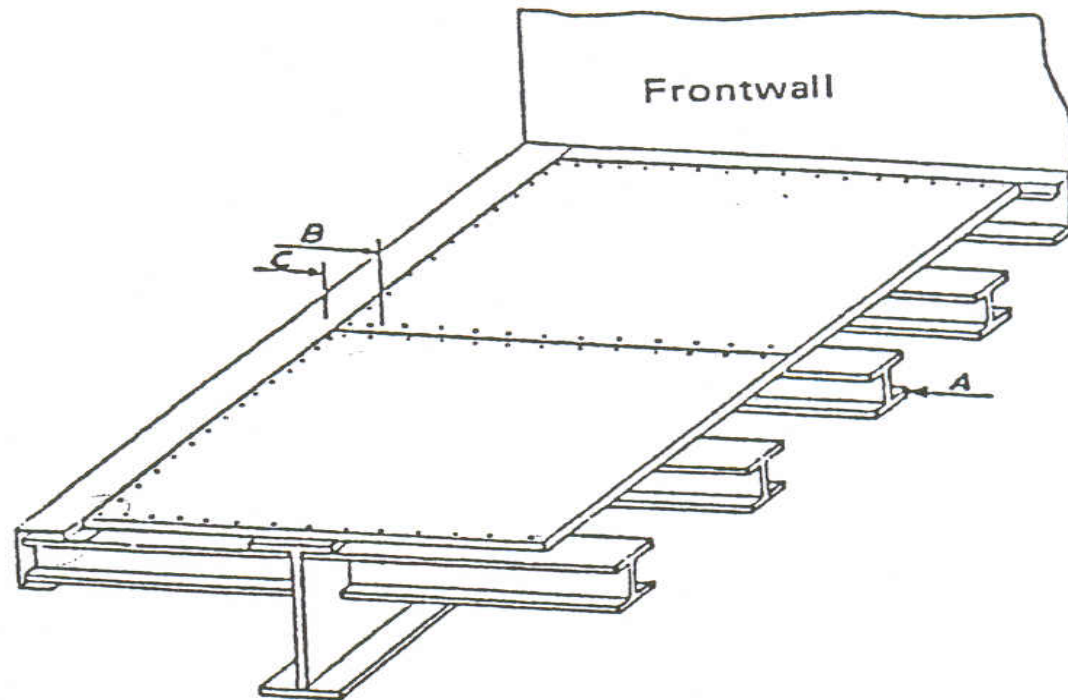
NOTWITHSTANDING THE ABOVE, LOAD COMPARTMENT FLOORS MAY BE SECURED BY MEANS OF E.G. SELF-TAPPING SCREWS, SELF-DRILLING RIVETS WHEN PLACED FROM INSIDE AND PASSING AT RIGHT-ANGLES THROUGH THE FLOOR AND THE METALLIC CROSS-PIECES UNDERNEATH

ANNEX 2, ARTICLE 2

STRUCTURE OF LOAD COMPARTMENTS

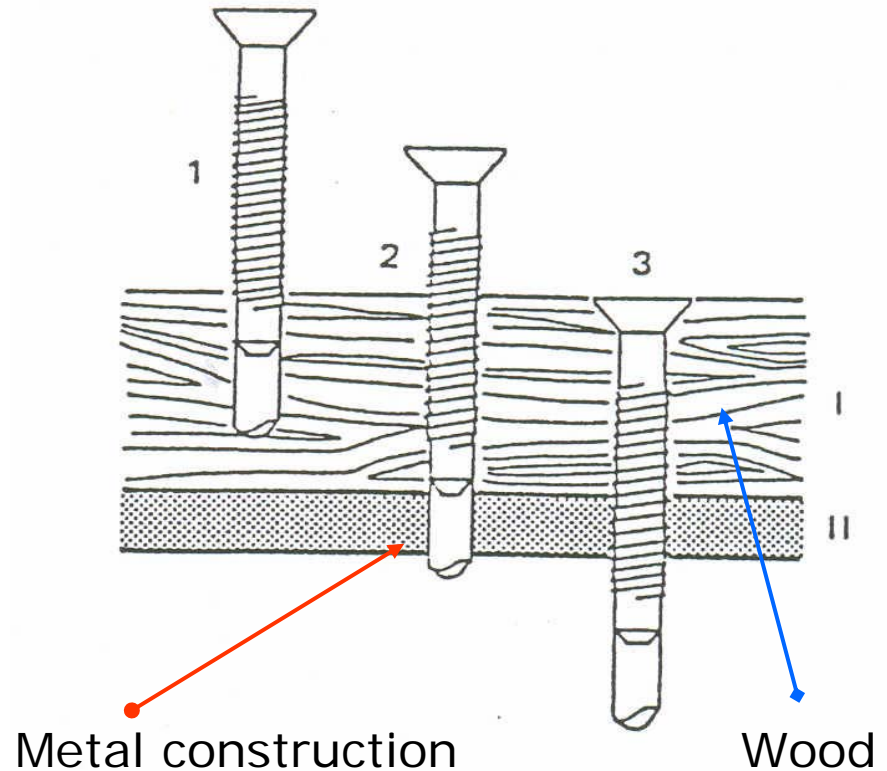
!! ON CONDITION, EXCEPT IN THE CASE OF SELF-TAPPING SCREWS, THAT SOME OF THEIR ENDS BE FLUSH WITH THE LEVEL OF THE OUTSIDE PART OF THE CROSS-PIECE OR BE WELDED ON TO IT.

SECURING OF LOAD COMPARTMENTS FLOOR



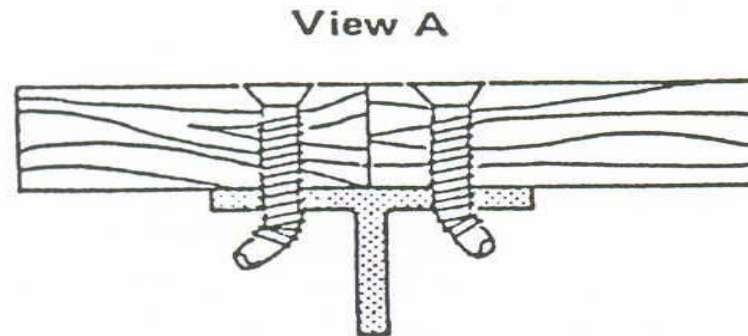
SECURING OF LOAD COMPARTMENTS FLOOR

- Correctly secured self-drilling, self-tapping screws.



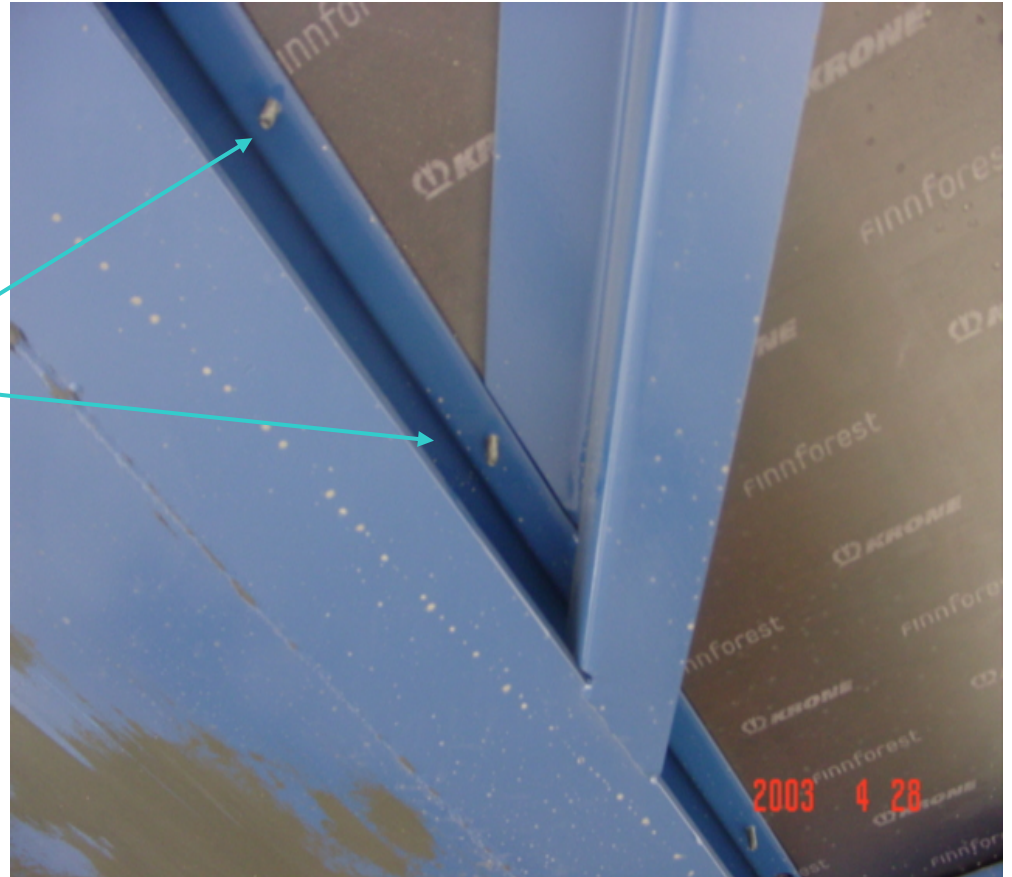
SECURING OF LOAD COMPARTMENTS FLOOR

- Correctly secured self-drilling, self-tapping screws



SECURING OF LOAD COMPARTMENTS FLOOR

- Correctly applied self-tapping special screws viewed from beneath



SECURING OF LOAD COMPARTMENTS

FRONT WALL

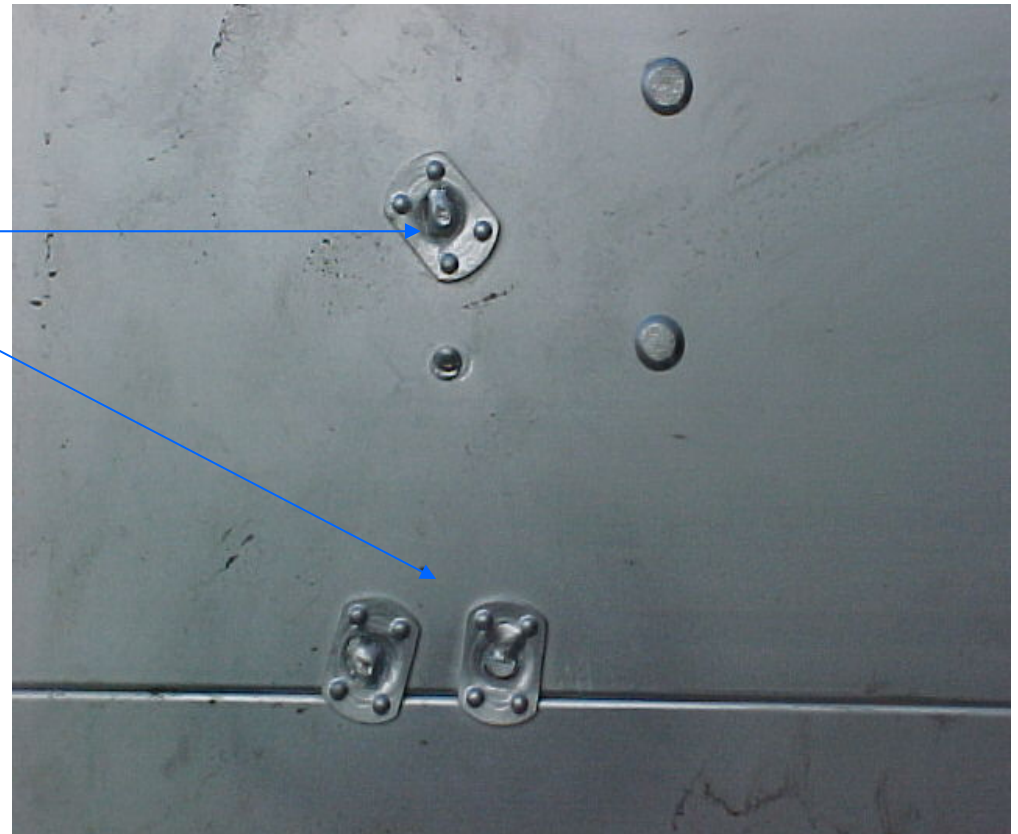
- Secured front wall



SECURING OF LOAD COMPARTMENTS

FRONT WALL

- Secured front wall welded from the inside



SECURING OF LOAD COMPARTMENTS

HINGE

Customs
secure
hinge
through its
construction



SECURING OF LOAD COMPARTMENTS

SADLE

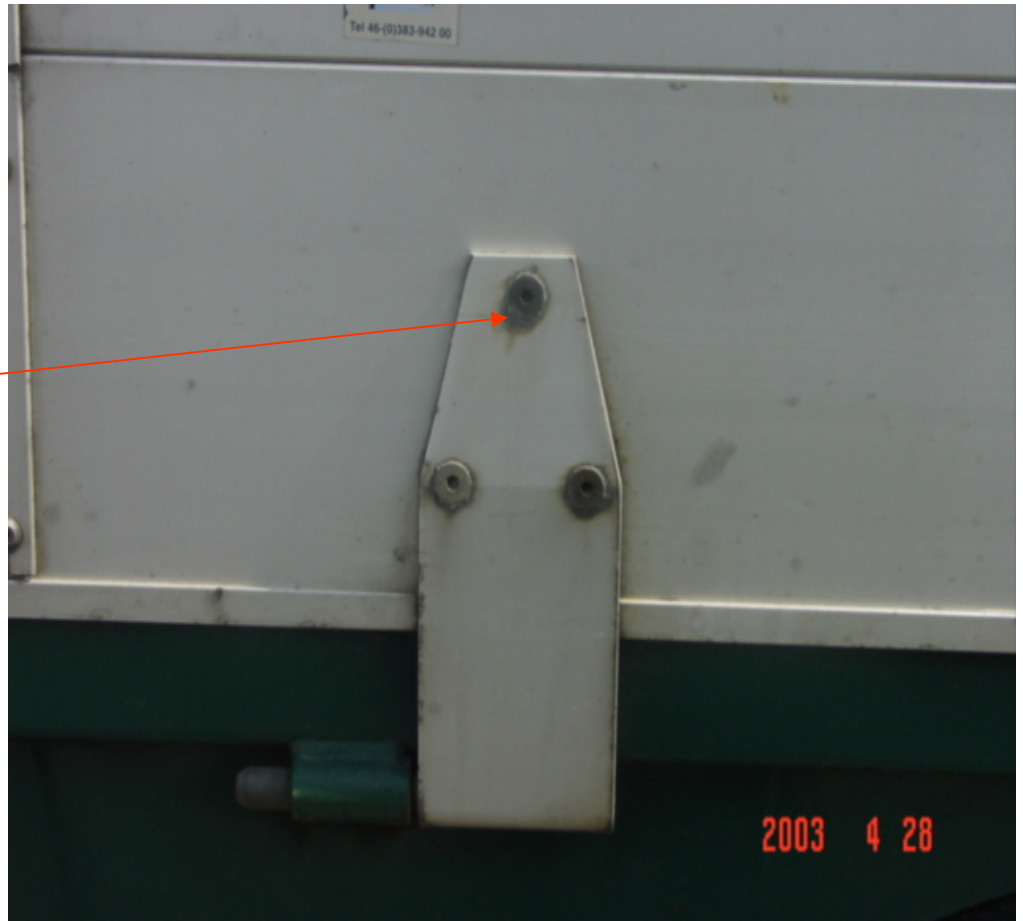
- Saddle for locking rod



SECURING OF LOAD COMPARTMENTS

HINGE

- Correctly welded and destroyed bold for side wall hinge



SECURING OF LOAD COMPARTMENTS

HINGE

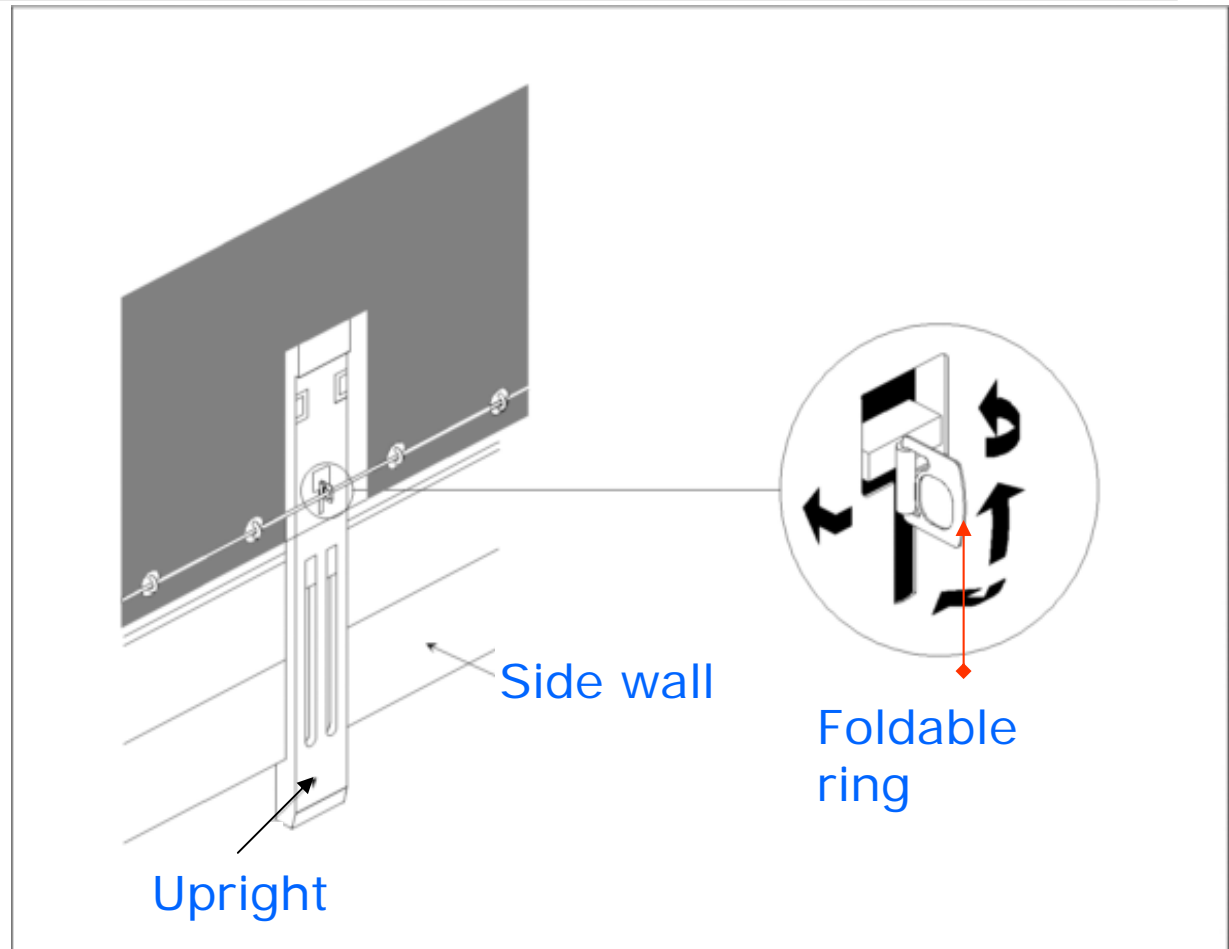
- Unsatisfactorily welded door hinge construction



SECURING OF LOAD COMPARTMENTS

SIDE WALL UPRIGHT

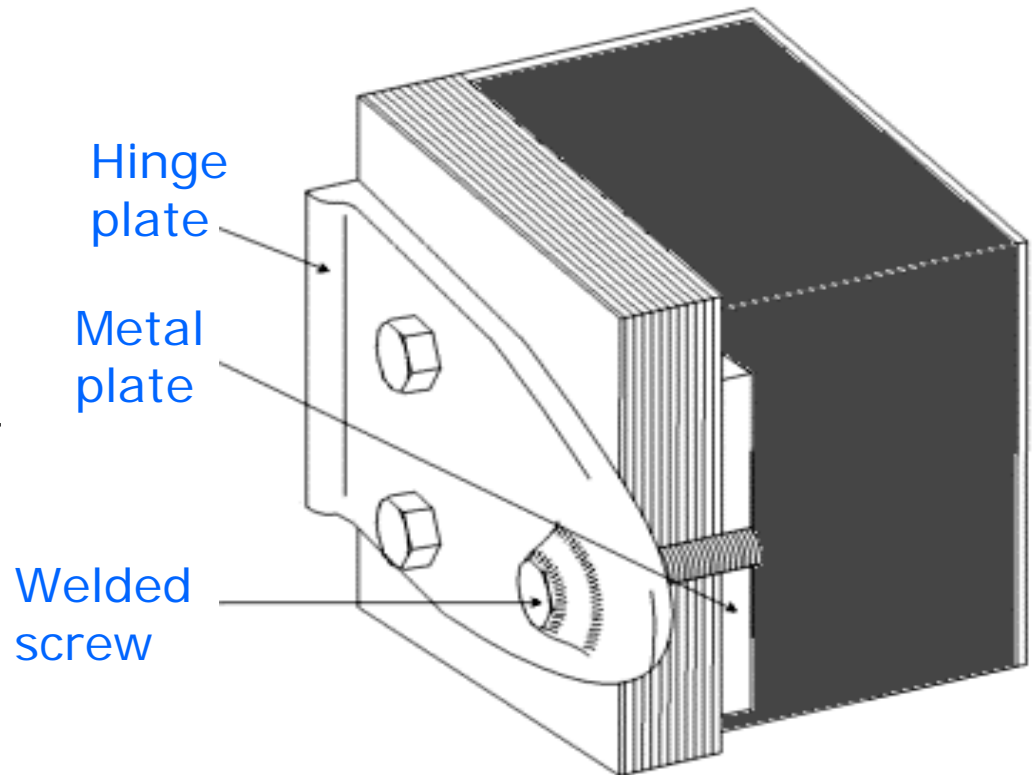
- Secured locking mechanism for the side boards



SECURING OF LOAD COMPARTMENTS

HINGE, INSULATED VEHICLE

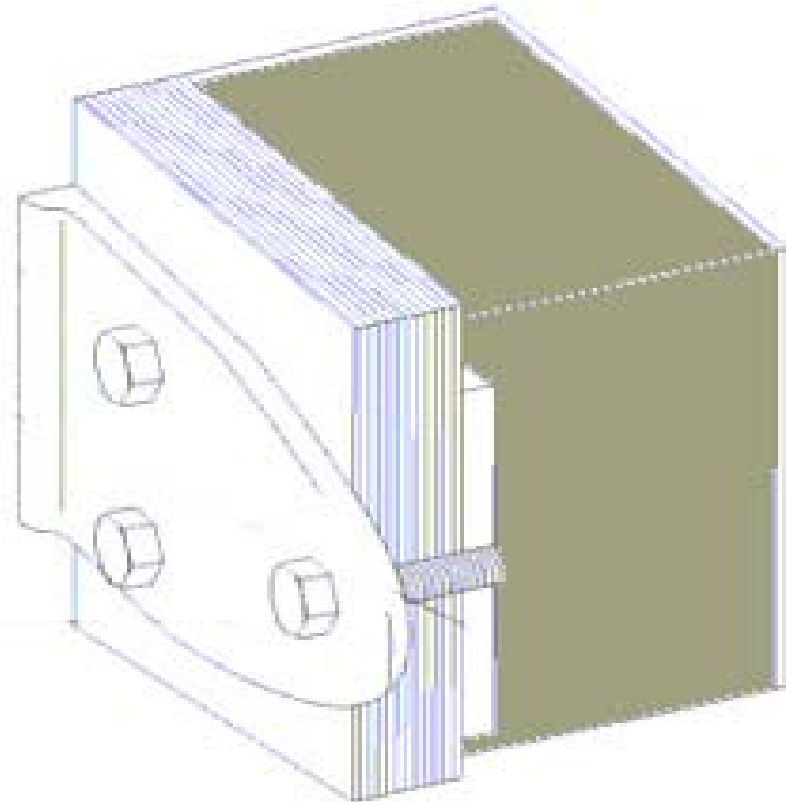
- Correct fastening of hinge on insulated load compartment door



SECURING OF LOAD COMPARTMENTS

HINGE, INSULATED VEHICLE

- Incorrect fastening of hinge on insulated load compartment



SECURING OF LOAD COMPARTMENTS

INSULATED VEHICLE

- Ventilation opening
- Metal screen



SECURING OF LOAD COMPARTMENTS

LOCKING DEVICE

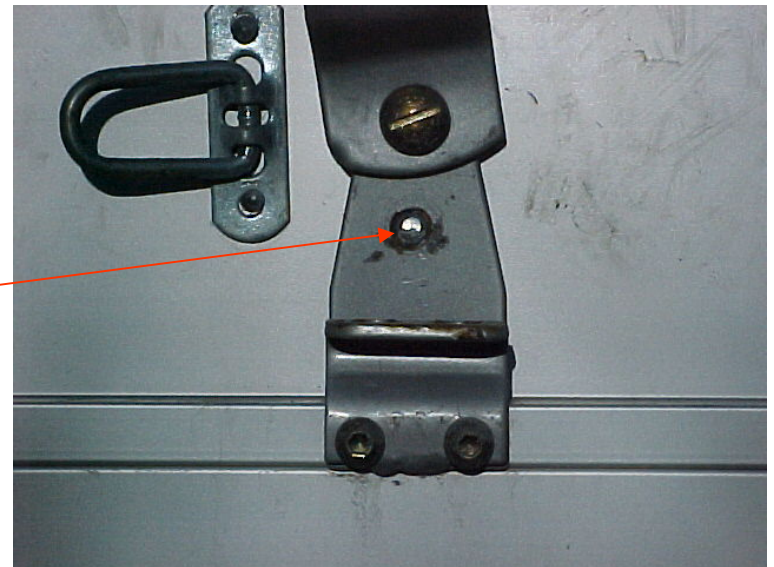
- Incorrect fastening of door locking device



SECURING OF LOAD COMPARTMENTS

LOCKING DEVICE

- Correctly secured door locking device by welding or riveting



ANNEX 2, ARTICLE 3

SHEETED VEHICLE

THE SHEET SHALL BE FIXED TO THE VEHICLE IN STRICT COMPLIANCE WITH THE CONDITIONS SET FORTH IN ARTICLE 1(A) AND (B) OF THESE REGULATIONS.

ANNEX 2, ARTICLE 3

SHEETED VEHICLE

THE FOLLOWING SYSTEMS CAN BE USED:

(i) METAL RINGS FIXED TO THE VEHICLES

(ii) EYELETS LET INTO THE EDGE OF THE SHEET, AND

(iii) A FASTENING PASSING THROUGH THE RINGS ABOVE THE SHEET AND VISIBLE FROM THE OUTSIDE FOR ITS ENTIRE LENGTH.

ANNEX 2, ARTICLE 3

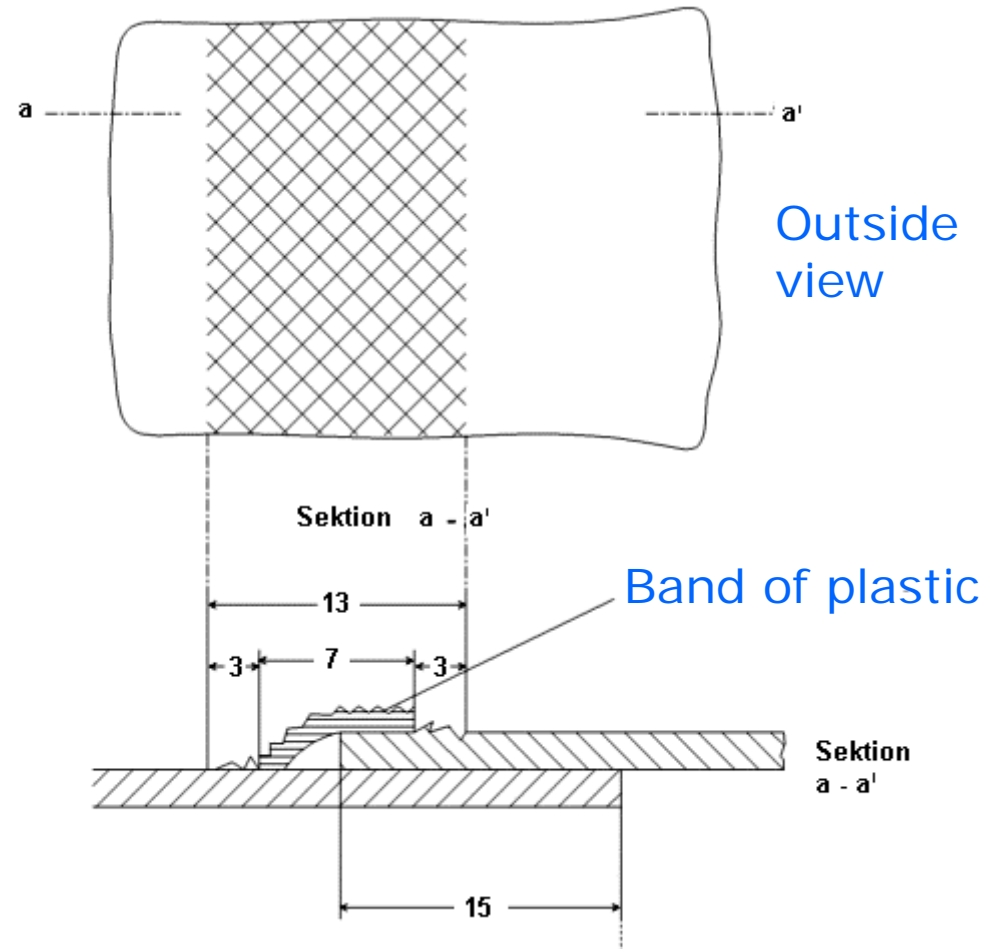
SHEETED VEHICLE

The sheet shall overlap solid parts of the vehicle by at least **250 mm**, measured from the centre of the securing rings, unless the system of construction of the vehicle in itself prevents all access to the load compartment.

ANNEX 2, ARTICLE 3

SHEETED VEHICLE

- Correct welding/repair of sheet

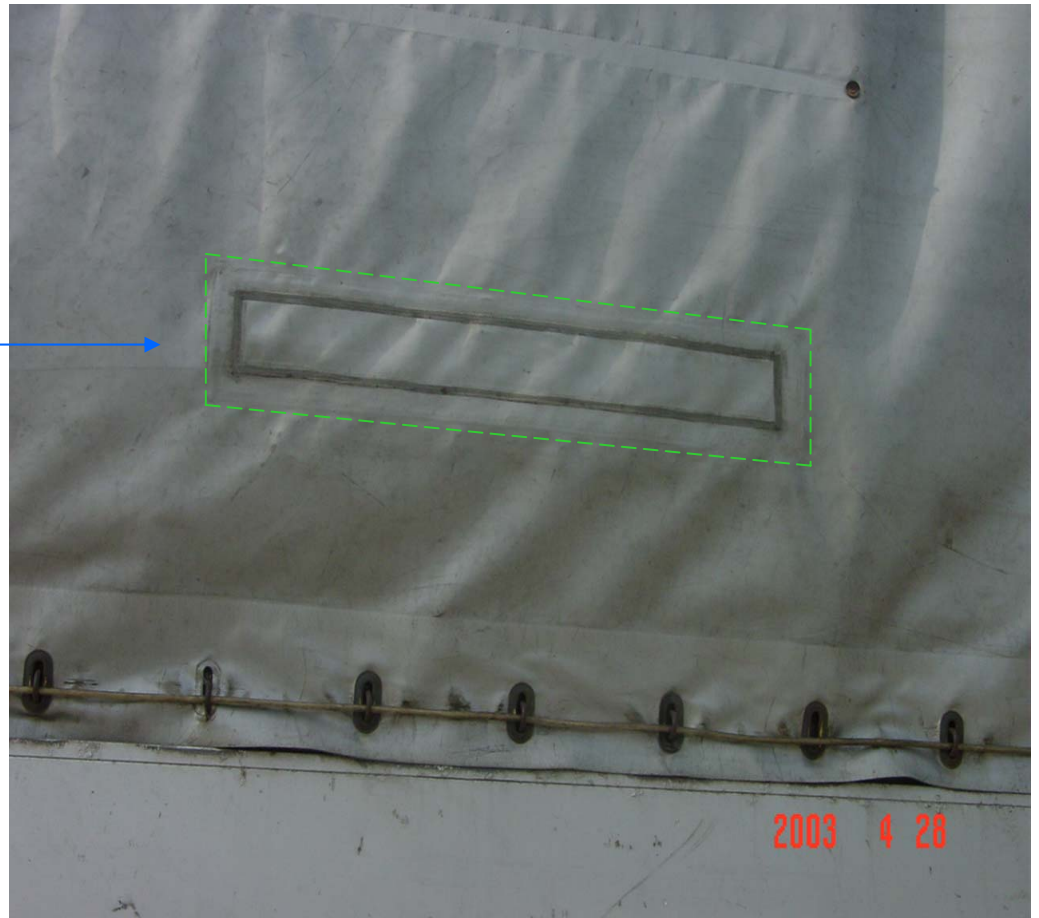


Measurement in millimetres

ANNEX 2, ARTICLE 3

SHEETED VEHICLE

- Correct repair of sheet



ANNEX 2, ARTICLE 3

SHEETED VEHICLE

- Correct repair of sheet

Plastic band 15mm

Fastening rope

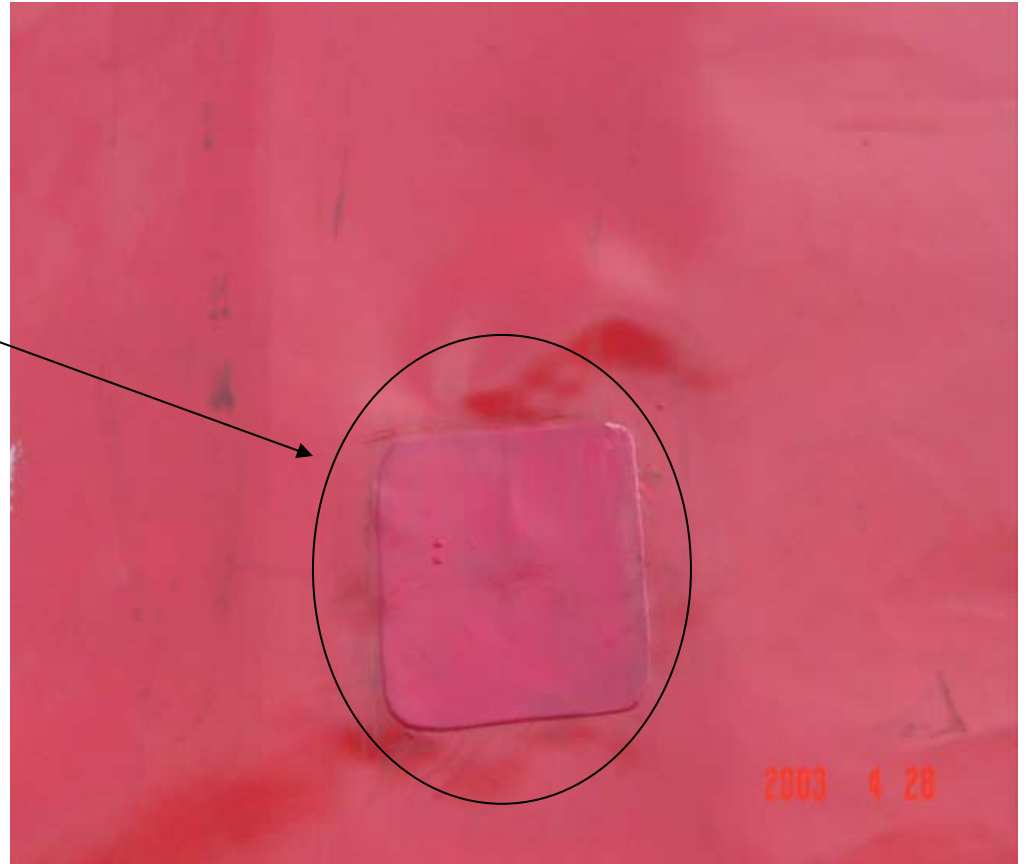
TIR ring and eyelet



ANNEX 2, ARTICLE 3

SHEETED VEHICLE

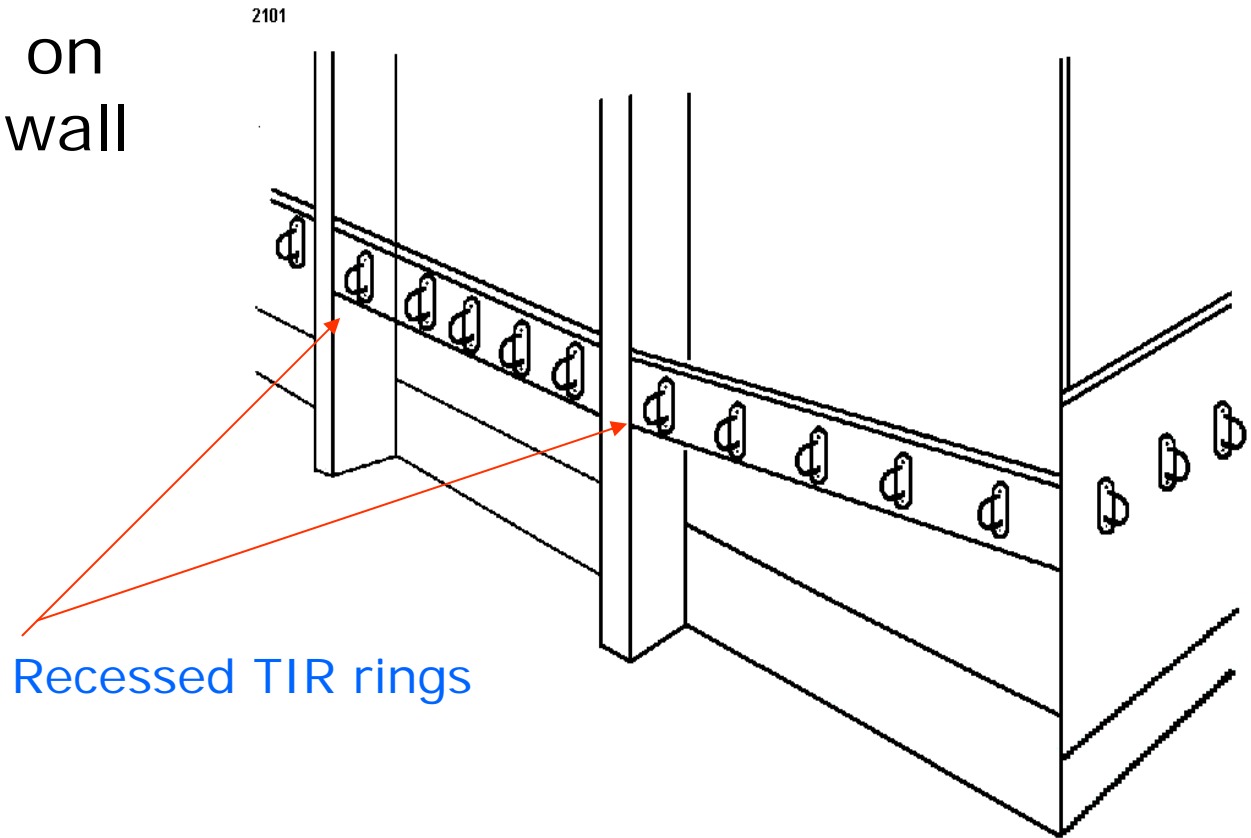
- Incorrect repair of sheet



ANNEX 2, ARTICLE 3

SHEETED VEHICLE

- Rings on front wall



ANNEX 2, ARTICLE 3

SHEETED VEHICLE

End-piece with

- ❖ Hollow rivet for Customs seal

and

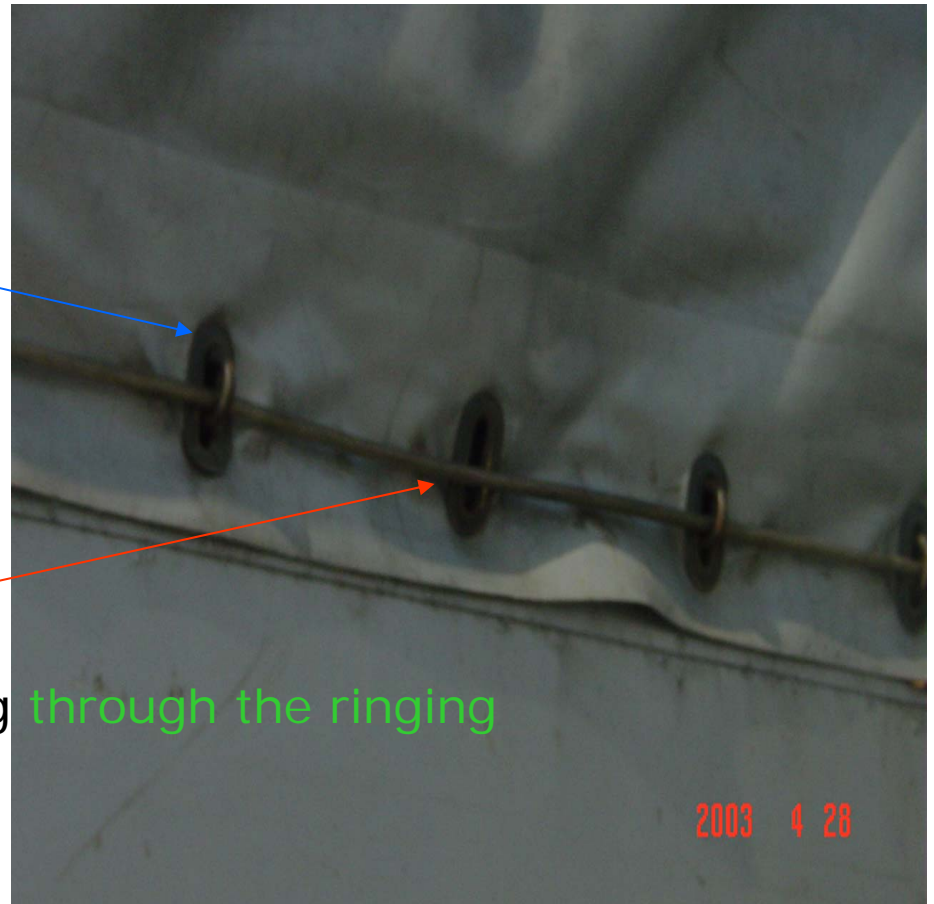
- ❖ Solid rivet



ANNEX 2, ARTICLE 3

SHEETED VEHICLE

- Correct dimension of rings (oval)

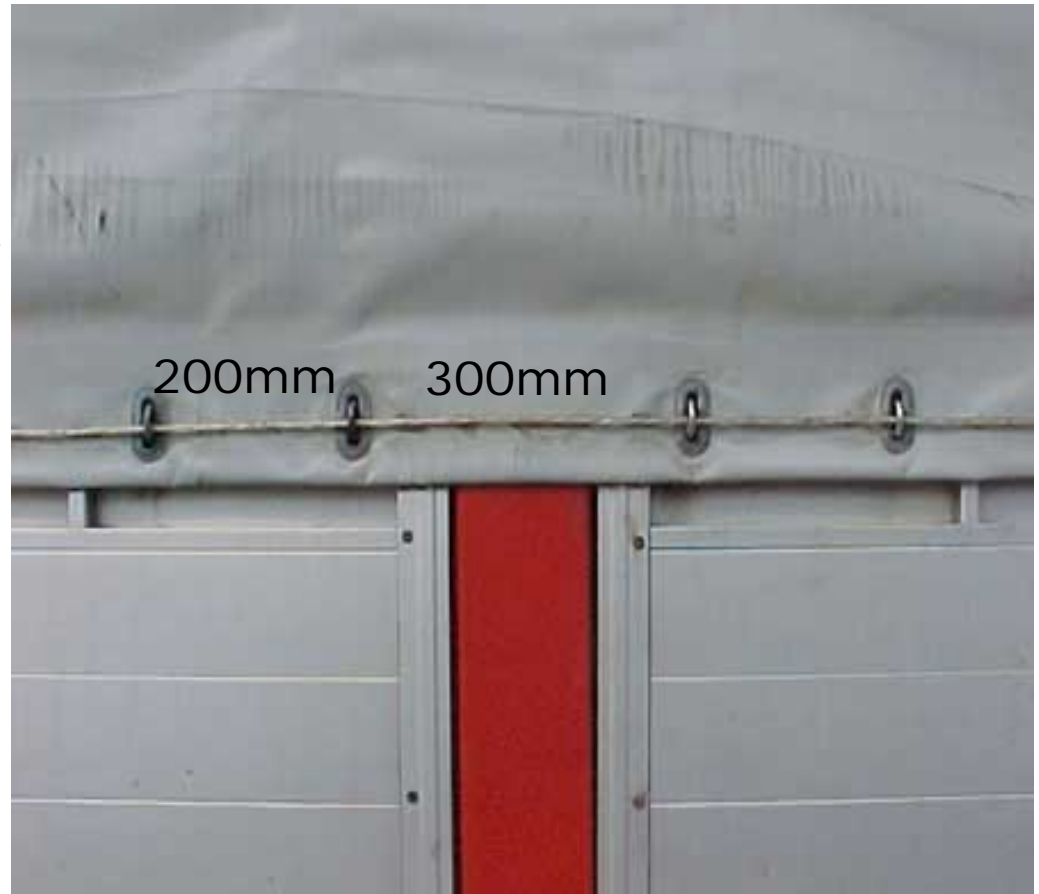


Fastening rope is not passing through the ringing

ANNEX 2, ARTICLE 3

SHEETED VEHICLE

- Correct distance between the rings



ANNEX 2, ARTICLE 3

SHEETED VEHICLE

- Different shapes of TIR rings.

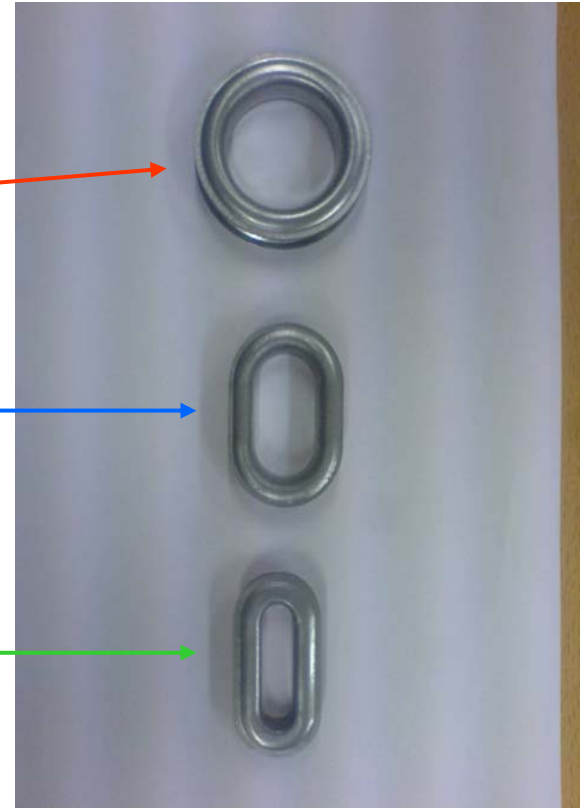
round



between round & oval



oval



ANNEX 2, ARTICLE 3

SHEETED VEHICLE

- A fastening rope to lock the sheet to the vehicle front wall



SHEETED VEHICLE FASTENING ROPE / THONG

- A thong to lock the sheet to the vehicle front wall

Thong



SHEETED VEHICLE

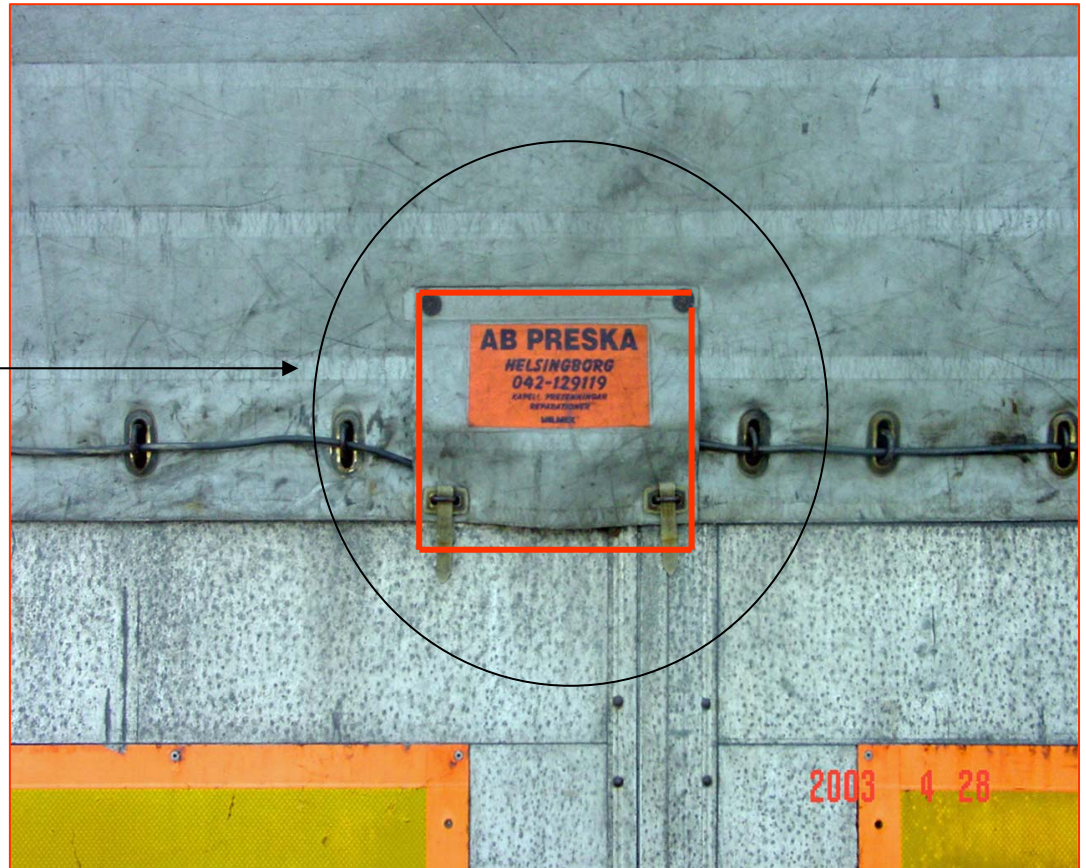
FASTENING ROPE / THONG

- Sheet thong too long



CUSTOMS SEAL PROTECTION

- Customs seal protection



TIR PLATE

- Correct TIR plate



LOAD COMPARTMENT MARKING

Paintings, transfers, bands of reflective material and other similar markings which cannot be torn off the walls or sheets of load compartments are **permissible** if they do not cover up the structure of the walls or sheets, which should still be clearly visible.

LOAD COMPARTMENT MARKINGS

Stickers and other similar markings which could hide openings in the load compartments should **not, however, be **allowed****

LOAD COMPARTMENT MARKINGS

- Decals on side boards



ANNEX 2, ARTICLE 1

BASIC PRINCIPLES

NO GOODS CAN BE REMOVED FROM OR INTRODUCED INTO, THE SEALED PART OF THE VEHICLE WITHOUT LEAVING OBVIOUS TRACES OF TAMPERING OR WITHOUT BREAKING THE CUSTOMS SEAL.

TRANSPORT UNDER CUSTOMS SEALS



UNECE **TIR** SEMINAR 2007



**I THANK YOU ALL FOR
YOUR KIND ATTENTION**