

Forest Certification- Do governments have a role?

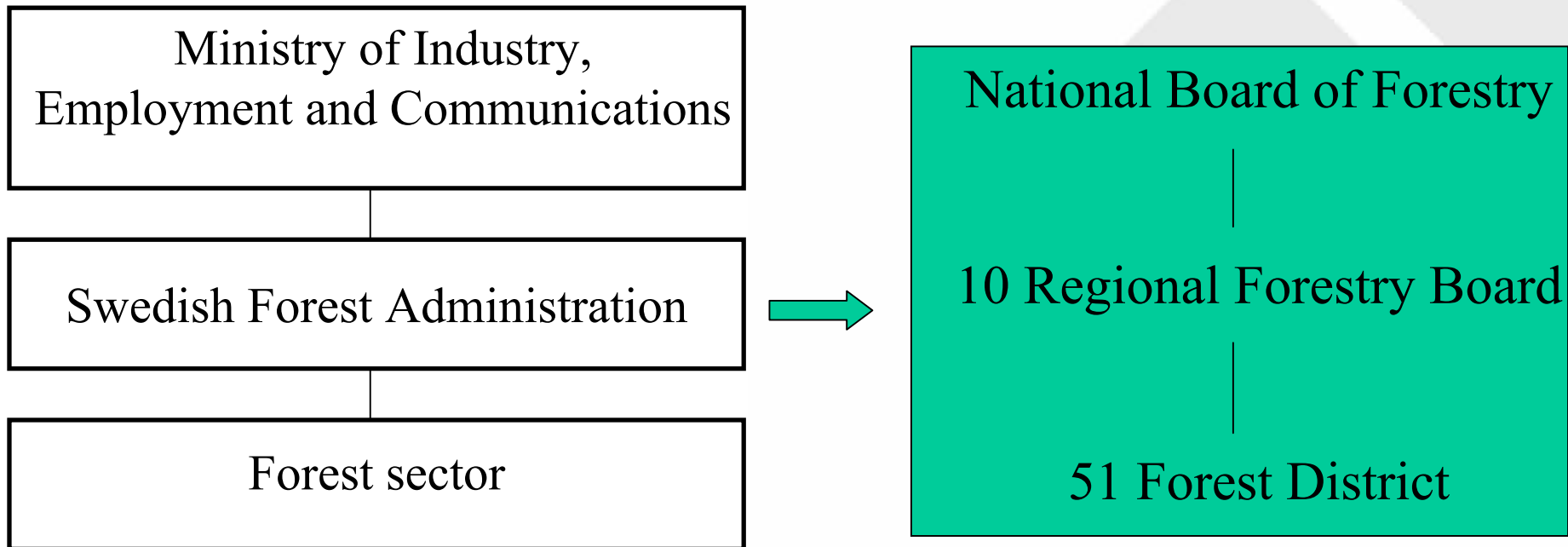
- Sweden's experience

Ms Malin Andersson

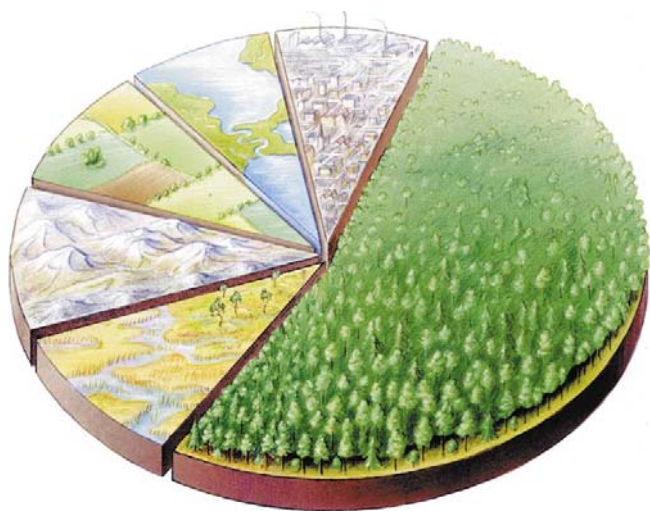
National Board of Forestry

The Forest Administration

Shall work for development of the forestry sector in line with the forest policy decided by the Government and the Parliament



Certified forest in Sweden



Forestland: 22,7 milj ha

- FSC: 10 milj ha
- PEFC: 6,6 milj ha
- Certified forest: 13,1 milj (58 %)

Forest Certification-

Does the Swedish government have a role?

Forest certification is a voluntary, market-based instrument to promote sustainable forest management

Governmental work in Sweden

- **New forest policy and law, 1993**
 - Timber production and environmental aspects are equally emphasised
 - Less regulating forest law
 - Freedom with Responsibility
 - Reduction of subsidies

Governmental work in Sweden

- **National Forest Process**
 - Implementing the forest policy
 - Develop targets for forests sector
 - 2005, third generation of targets
 - Involve all stakeholders- the National sector council

National Forest Process



Overarching political objectives

A long term target frame

Interim targets 2005-2010,

- Forest production
- Environmental values
- Multiple-use and social values

National Forest Process

- Precise targets and matching indicators

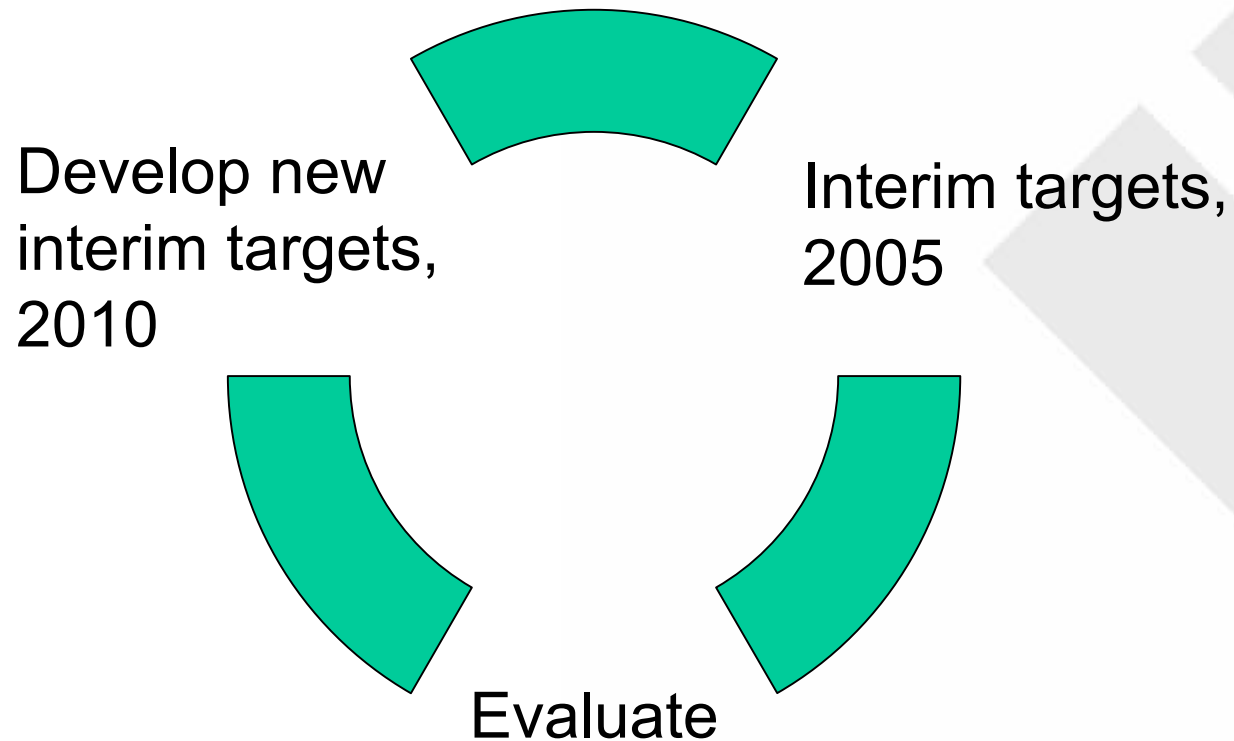
Pre commercial thinnings

By the year 2010 the area with an acute need for pre-commercial thinnings in the country should be less than 700 000 ha.

Long term protection of forest land

A further 900 000 hectares of forest land of high conservation value will be excluded from forest production by the year 2010

National Forest Process



Conclusion

- Forest certification- a voluntary and market based process
- National forest process- our way of implementing the forest policy
- Sweden's national forest process is parallel to the certification process
- Interactions between the processes