



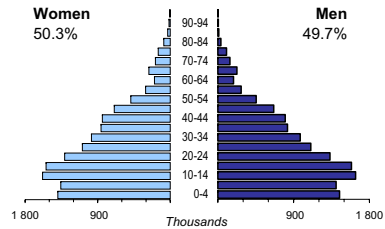
UZBEKISTAN

Capital:	Tashkent (2 147 700)
Two largest cities:	Namangan (376 600) Samarqand (362 200)
Area (km²):	447 400
Total population:	26 590 000
Population density (per km²):	59
Official languages:	Uzbek
Date joined UN:	2 March 1992
National currency:	Uzbekistani sum (UZS)
National statistical office:	State Committee on Statistics of the Republic of Uzbekistan http://www.stat.uz/

Time: UTC +5h



Population by age, 2005



Legal marital status, population aged 18+

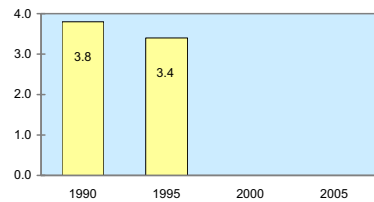


Life expectancy (in years), 2005:	at birth	at 65
Women:	73	15
Men:	68	13

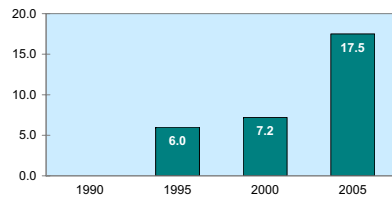
Median age (in years), 2005:	
Women:	23
Men:	22

	<i>percentage of total population</i>
Foreign born:	..
Foreigners in population:	..

Total fertility rate



Parliament seats held by women (% of total)



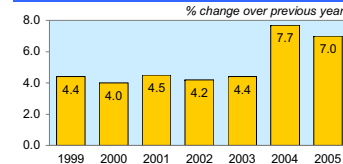
	1999	2000	2001	2002	2003	2004	2005
Employment (% change over previous year)	1.0	1.1	1.7	2.2	2.7	3.4	..
Unemployment rate (%)	0.4	0.4	0.4	0.4	0.3
Youth unemployment rate (%)

Economic activity rate



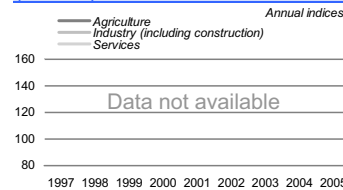
GDP at current prices	..
in millions of US Dollars, PPP:	..
in millions of UZS, 2005:	15 210 000
GDP at constant 2000 prices, per capita	..
US Dollars, PPP:	..
UZS, 2005:	160 378
Final consumption expenditure at 2000 prices, per capita, US Dollars, PPP:	..
Purchasing Power Parity (PPP)	..
UZS per USD, US=1:	..
Gross external debt:	..
in millions of US Dollars, 2004:	4 800
Exchange rate	..
Annual average, UZS per USD, 2005:	1 114

Real GDP growth rate

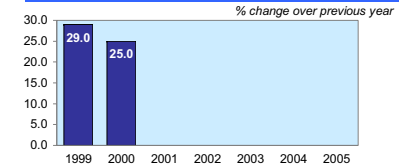


	<i>% of GDP</i>
Exports of goods and services:	..
Imports of goods and services:	..
External trade balance, 2001:	-0.3

GDP in agriculture, industry, and services (2000=100)



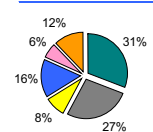
Consumer price index (annual average)



GDP by major sectors

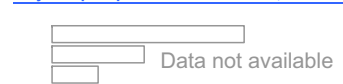


Employment in major sectors, 2004



- Agriculture, hunting & forestry, fishing (ISIC A-B)
- Industry, including energy (ISIC C-E)
- Construction (ISIC F)
- Wholesale & retail trade, repairs; hotels & restaurants; transport & communications (ISIC G-I)
- Financial intermediation, real estate, renting & business activities (ISIC J-K)
- Other service activities (ISIC L-P)

Major import partners from UNECE, 2005



Major export partners in UNECE, 2005

