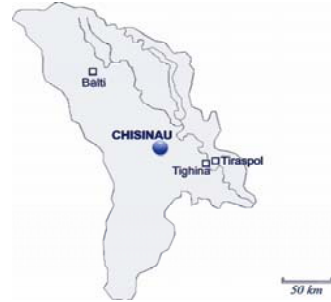




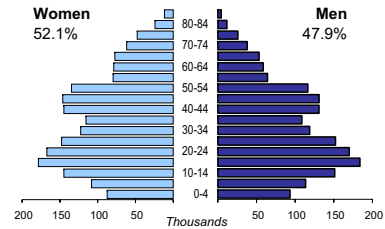
# MOLDOVA

<b>Capital:</b>	Chisinau (601 000)
<b>Two largest cities:</b>	Tiraspol (185 000) Tighina (125 000)
<b>Area (km<sup>2</sup>):</b>	33 845
<b>Total population:</b>	3 603 936
<b>Population density (per km<sup>2</sup>):</b>	106
<b>Official languages:</b>	Moldavian
<b>Date joined UN:</b>	2 March 1992
<b>National currency:</b>	Moldovan leu (MDL)
<b>National statistical office:</b>	National Bureau of Statistics of the Republic of Moldova <a href="http://www.statistica.md">http://www.statistica.md</a>

Time: UTC +2h



## Population by age, 2004

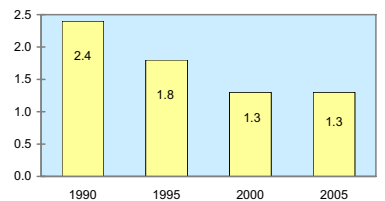


<b>Life expectancy (in years), 2005:</b>	<b>at birth</b>	<b>at 65</b>
Women:	72	14
Men:	64	11

<b>Median age (in years), 2004:</b>	
Women:	34
Men:	30

	<i>percentage of total population</i>
Foreign born:	..
Foreigners in population:	..

## Total fertility rate

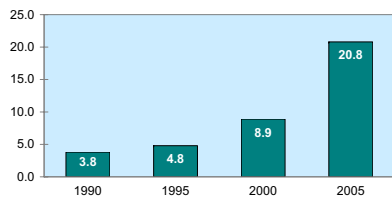


## Legal marital status, population aged 18+



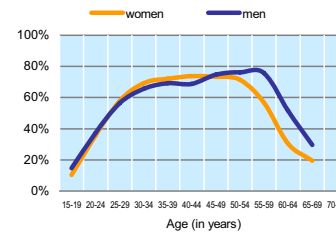
Women in the labour force, 2005:	51.5%
Gender pay gap, 2004:	28.7%
Female government ministers, 2006: percentage of total for both sexes	29.4%
Female central bank board members: percentage of total for both sexes	..
Female tertiary students, 2002-2003: percentage of total for both sexes	56.8%

## Parliament seats held by women (% of total)

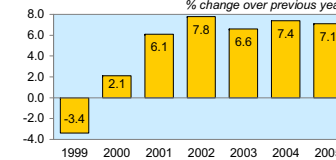


	1999	2000	2001	2002	2003	2004	2005
Employment (% change over previous year)	..	..	-1.0	0.4	-9.9	-3.0	0.2
Unemployment rate (%)	..	8.5	7.3	6.8	7.9	8.1	7.3
Youth unemployment rate (%)	..	15.8	16.3	15.2	18.1	19.7	18.7

## Economic activity rate, 2004

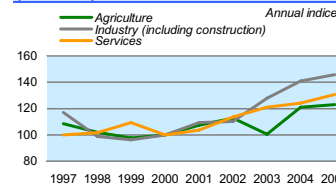


## Real GDP growth rate



	<i>% of GDP</i>
Exports of goods and services, 2005:	53.1
Imports of goods and services, 2005:	91.3
External trade balance, 2005:	-38

## GDP in agriculture, industry, and services (2000=100)



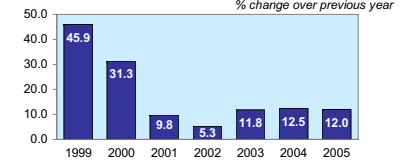
## Major import partners from UNECE, 2005

Ukraine	20.93
Russian Federation	11.70
Romania	11.22

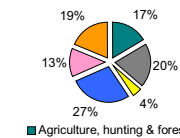
(% of total imports)

GDP at current prices in millions of US Dollars, PPP, 2005:	8 689
in millions of MDL, 2005:	36 755
GDP at constant 2000 prices, per capita US Dollars, PPP, 2005:	2 143
MDL, 2005:	6 246
Final consumption expenditure at 2000 prices, per capita, US Dollars, PPP, 2005:	2 320
Purchasing Power Parity (PPP) MDL per USD, 2005, US=1:	4.23
Gross external debt: in millions of US Dollars, 2005:	1 990
Exchange rate Annual average, MDL per USD, 2005:	12.6

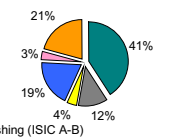
## Consumer price index (annual average)



## GDP by major sectors, 2005



## Employment in major sectors, 2005



## Major export partners in UNECE, 2005

Russian Federation	31.84
Italy	12.23
Romania	10.23

(% of total exports)

