



Geneva 2016-09-22

Klas Blomqvist
Eva Holm



facebook.com/statistiskacentralbyranscb



[@SCB_nyheter](https://twitter.com/SCB_nyheter)



[statistiska_centralbyran_scb](https://www.instagram.com/statistiska_centralbyran_scb)



www.linkedin.com/company/scb





Outline

- Towards a metadata driven production at Statistics Sweden
 - Focus on design
- From theory to practice, National Accounts





Towards a metadata driven production

- Statistics Sweden - towards a more standardized and process oriented approach to statistics production.
- An important element - build and establish a common production environment.
- The foundation for this environment is an SCB adapted version of the GSBPM model where metadata, using GSIM as a basis, is used to configure and steer the production process for each survey in the system → metadata driven production

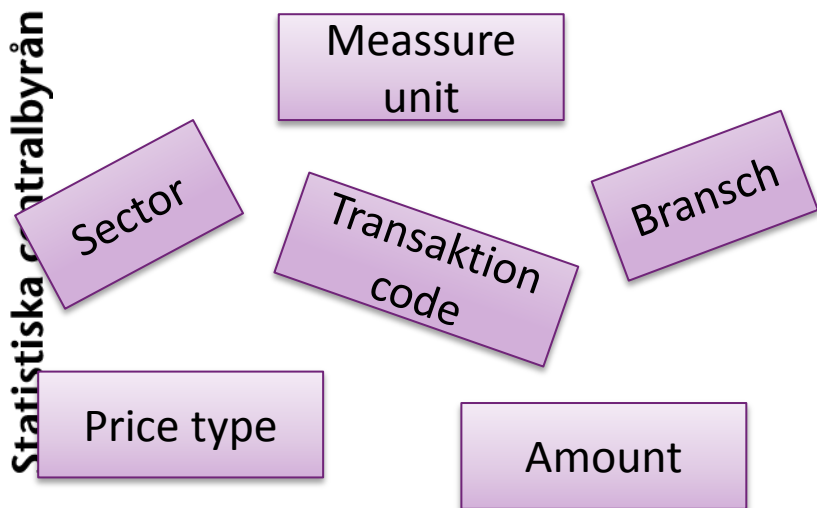




Metadata



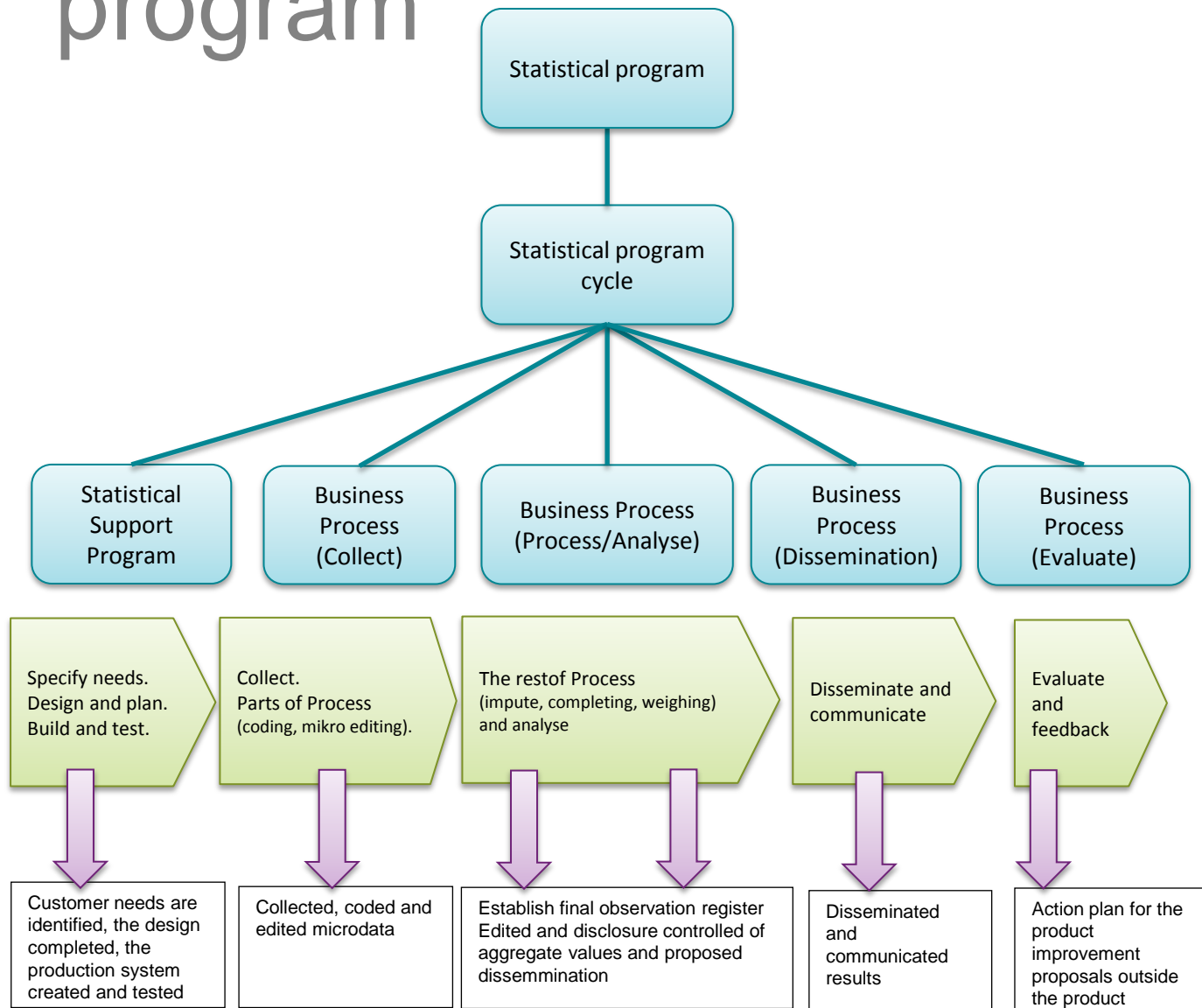
Driving and feeding the process



Content



Internal structure - statistical program

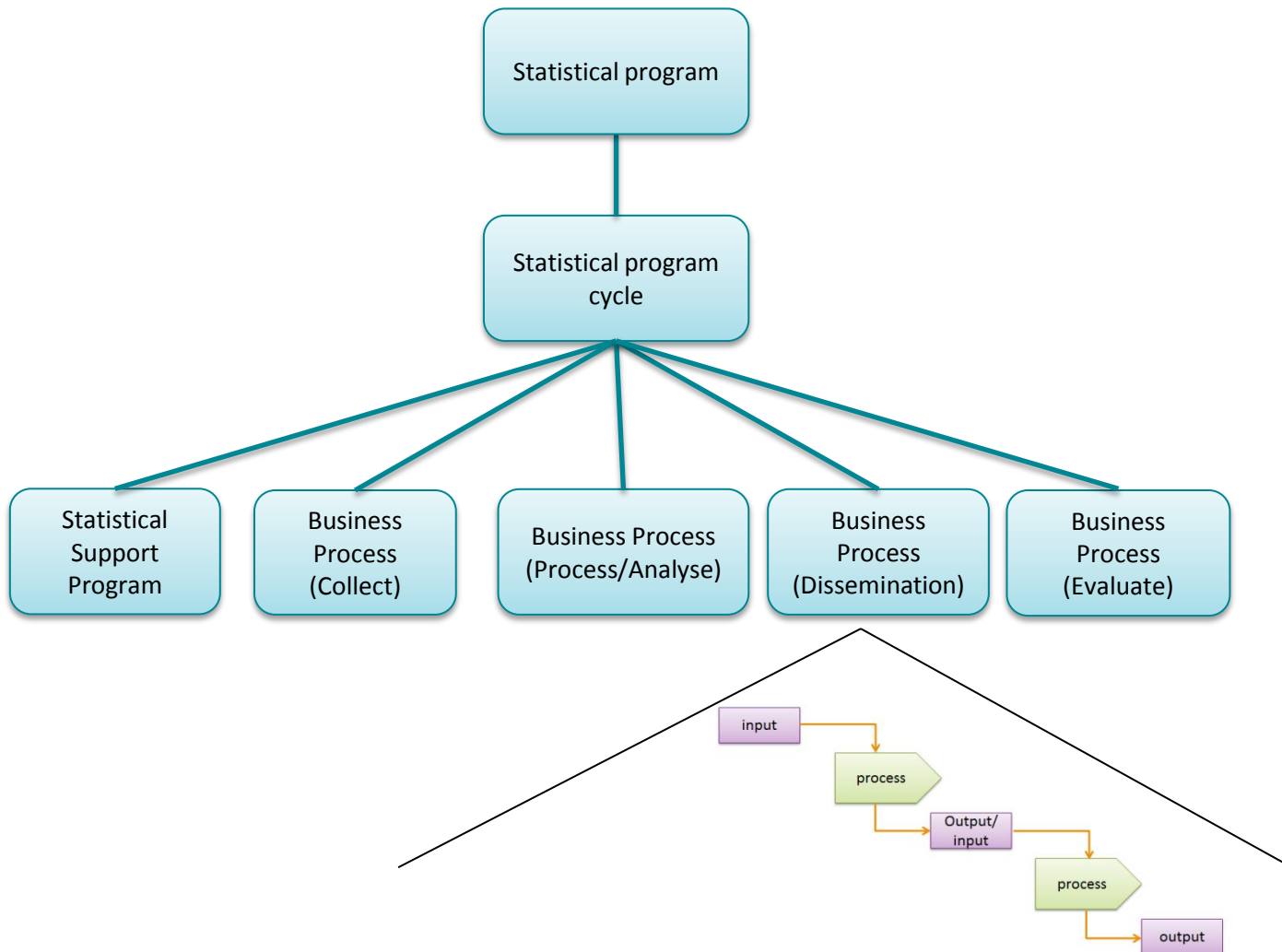




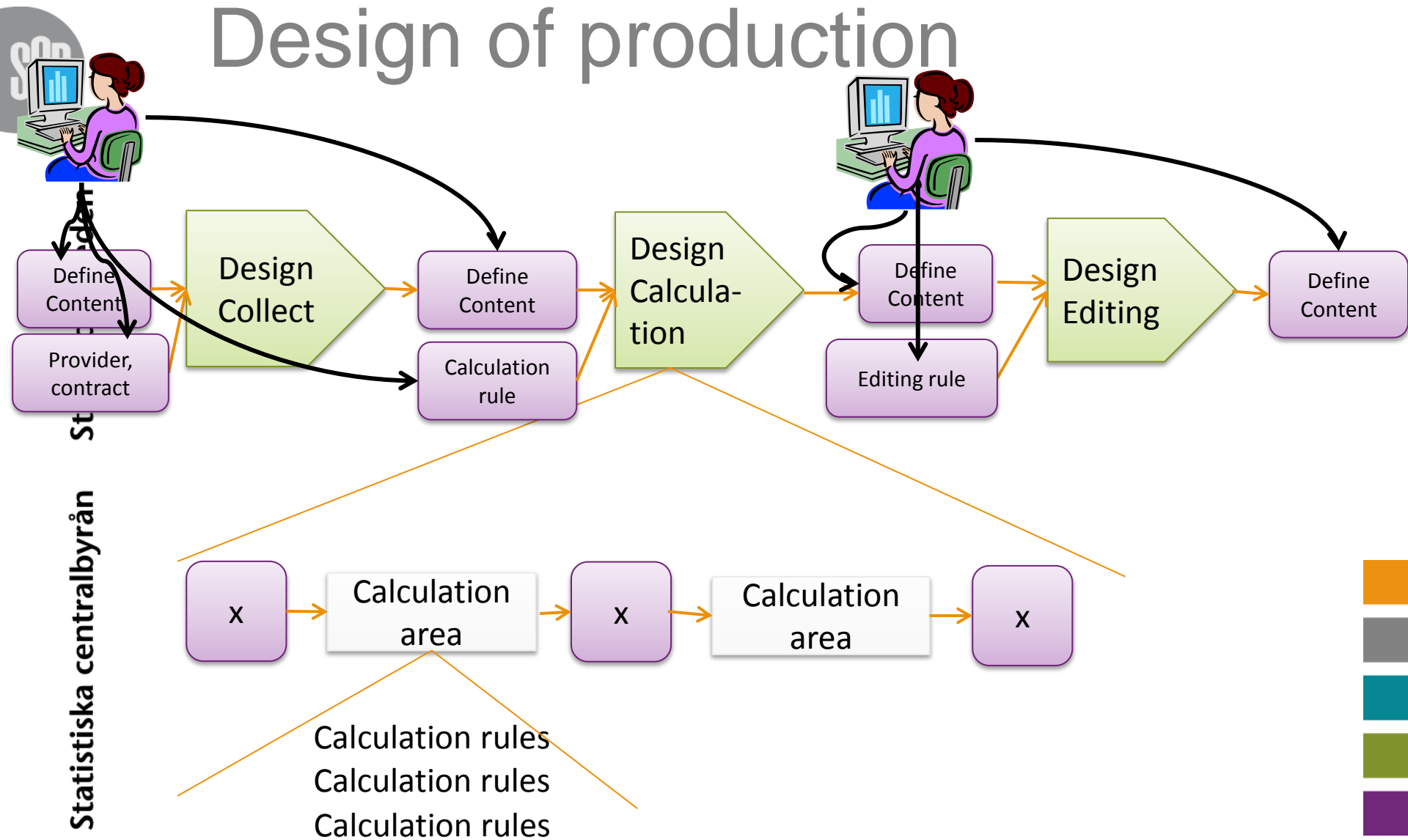
Design

Statistics Sweden

Statistiska centralbyrån

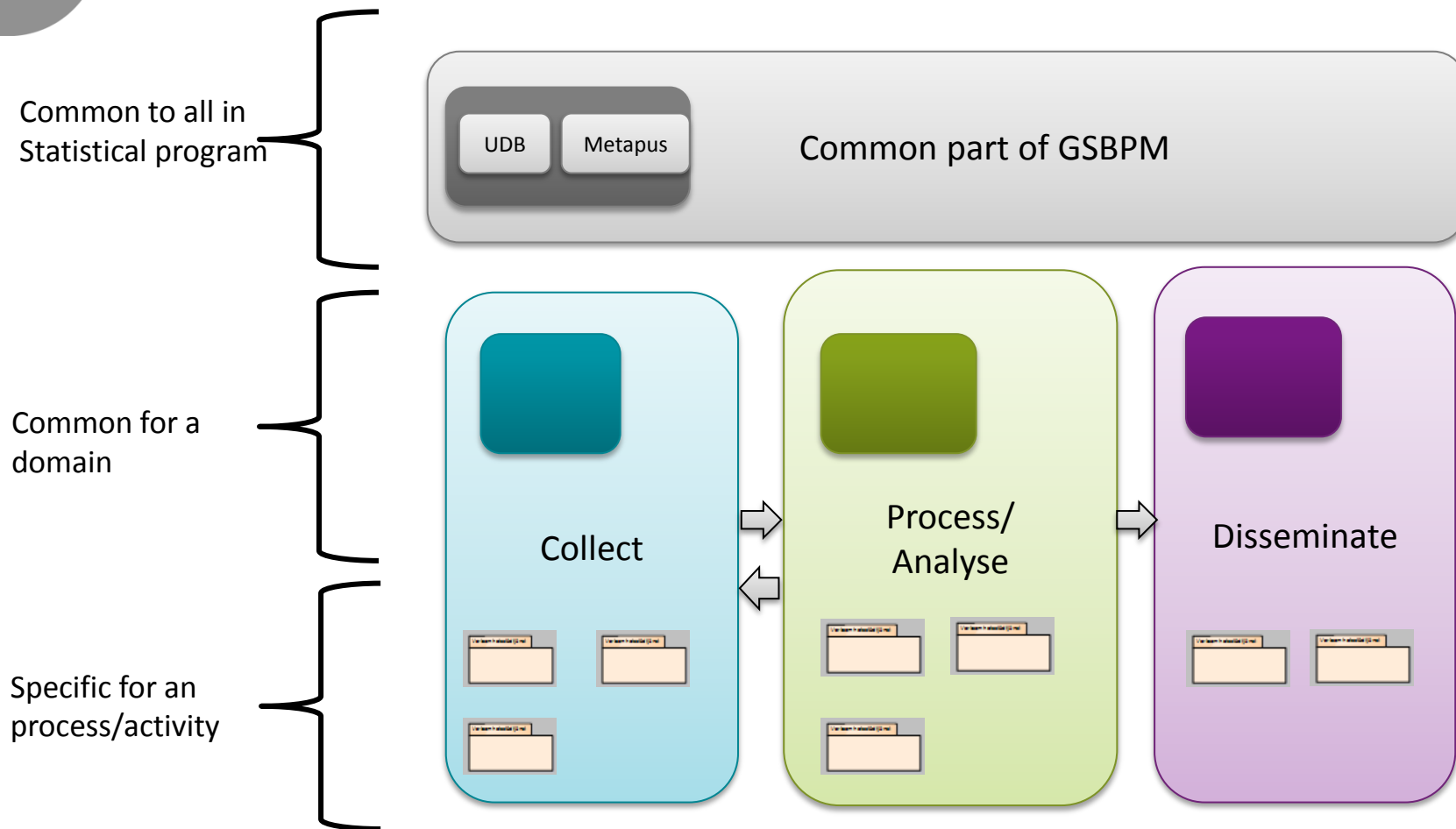


Design of production





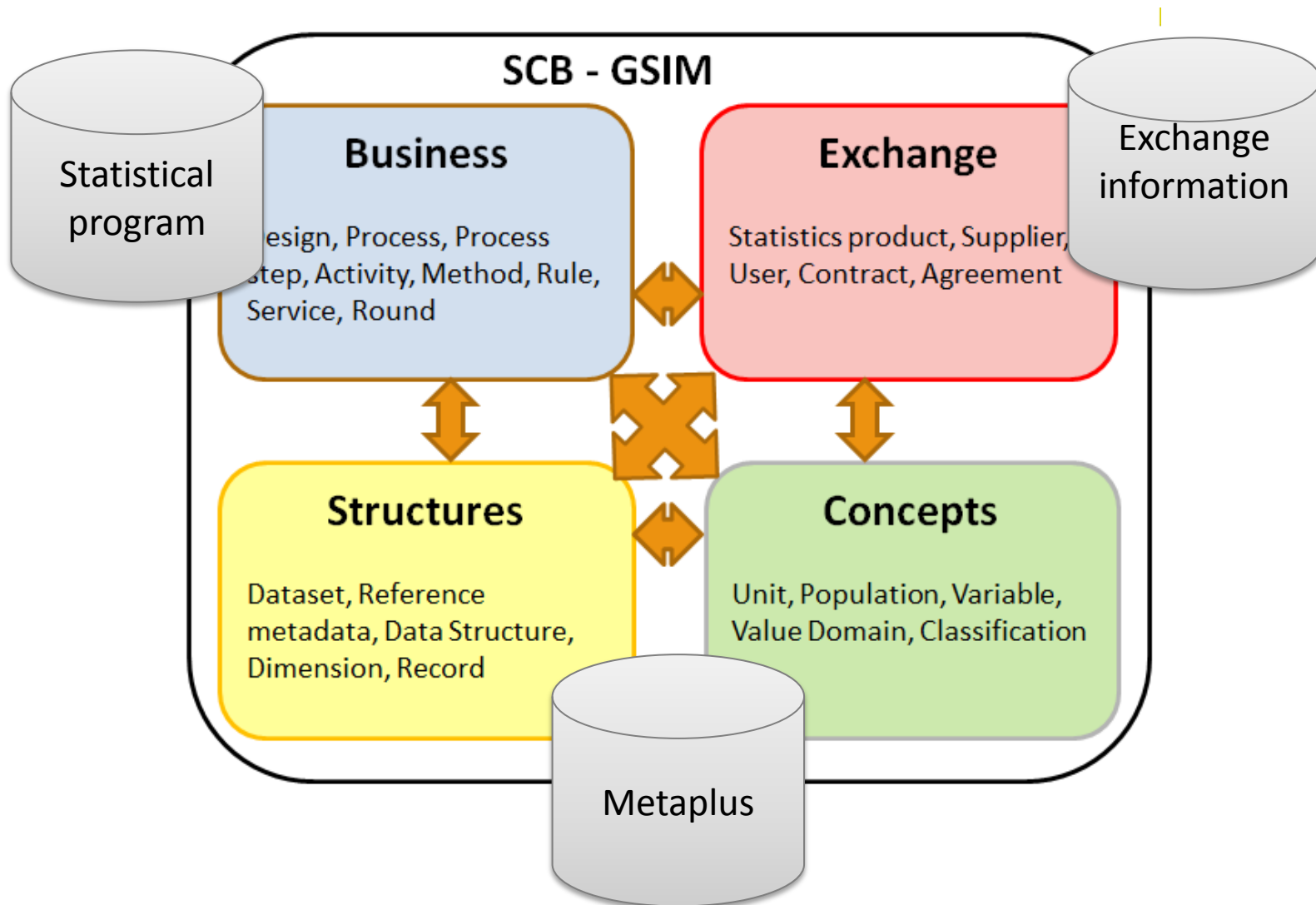
Information och metadata – 3 levels





Metadata repository

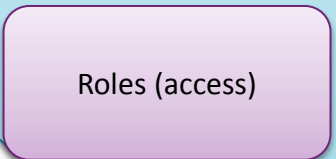
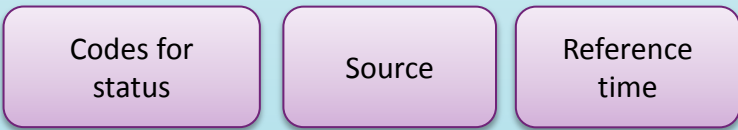
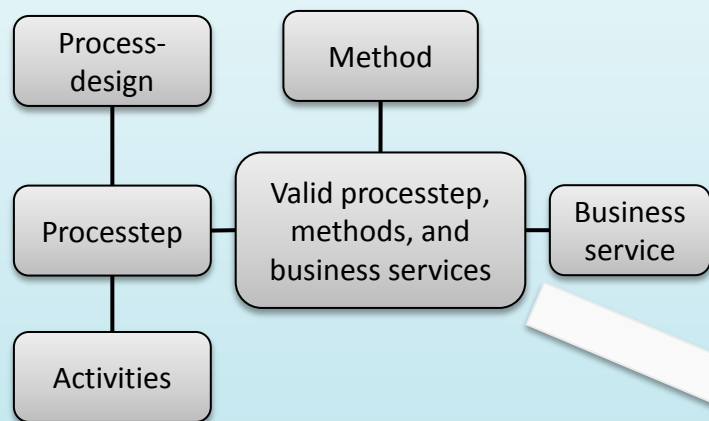
Statistiska centralbyrån Statistics Sweden



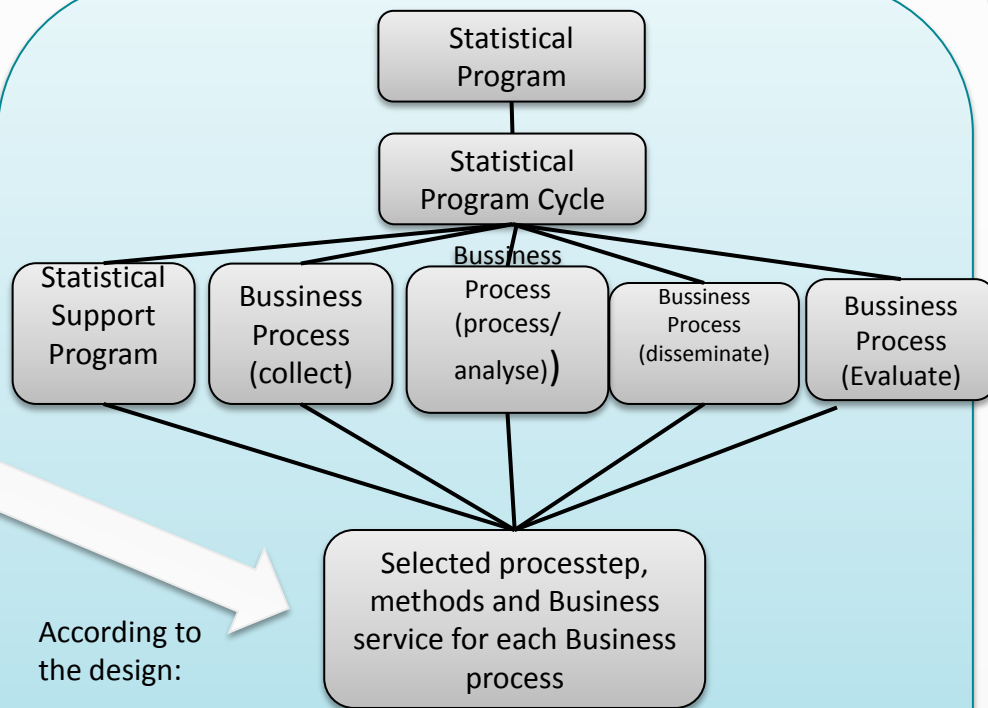


Design of Statistical program

Administreras Centralt



Anges av undersökningen



Identified common aspects

Identified common aspects that are needed for an effective common production environment are:

- Process step, methods and services
- Valid process step for a business process
- Valid methods for a process step
- Valid services for a process step and methods
- Common status codesReference time
- List of sources
- List of services

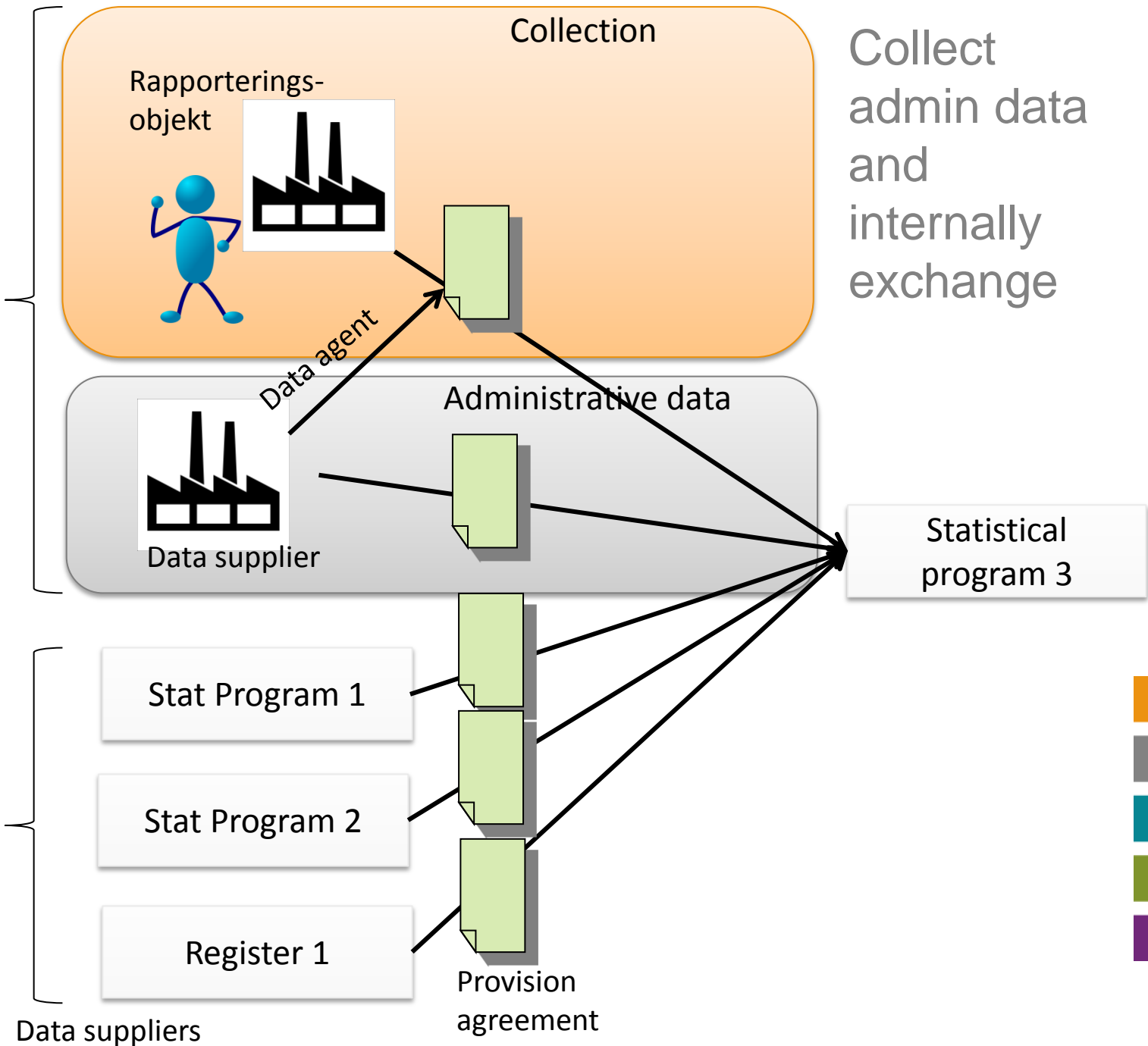




Statistics Sweden
Statistiska centralbyrån

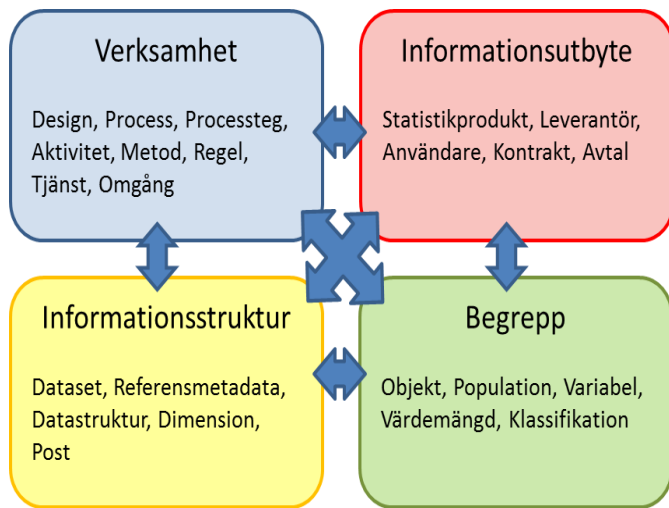
External deliverables

Internal deliverables

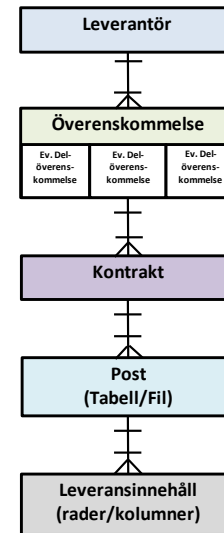




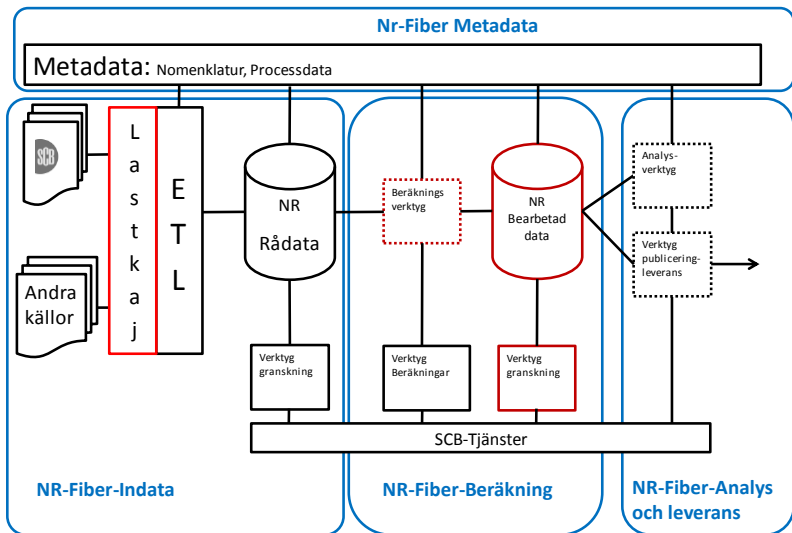
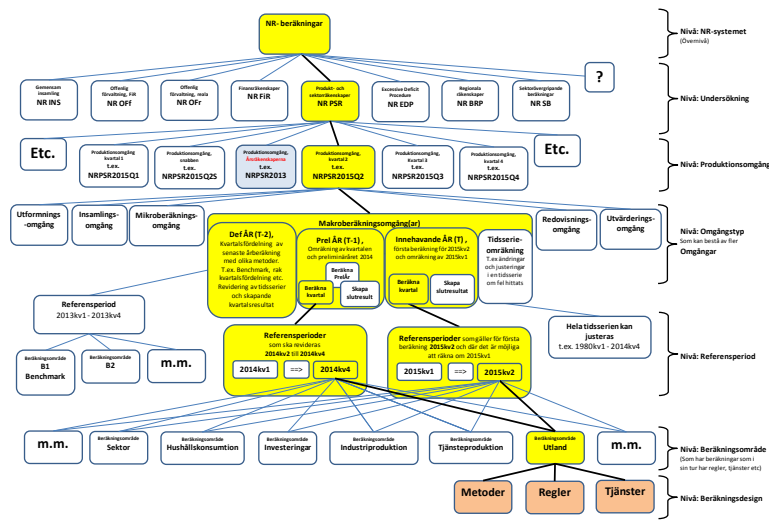
National accounts:



Leverantörsöverenskommelse och kontrakt (NR)



NRPSR makro; Relation undersökning, produktionsomgång och till beräkning (exempel kvartalberäkning (BNP) 2:a kvartalet 2015 (Makroberäkningar))

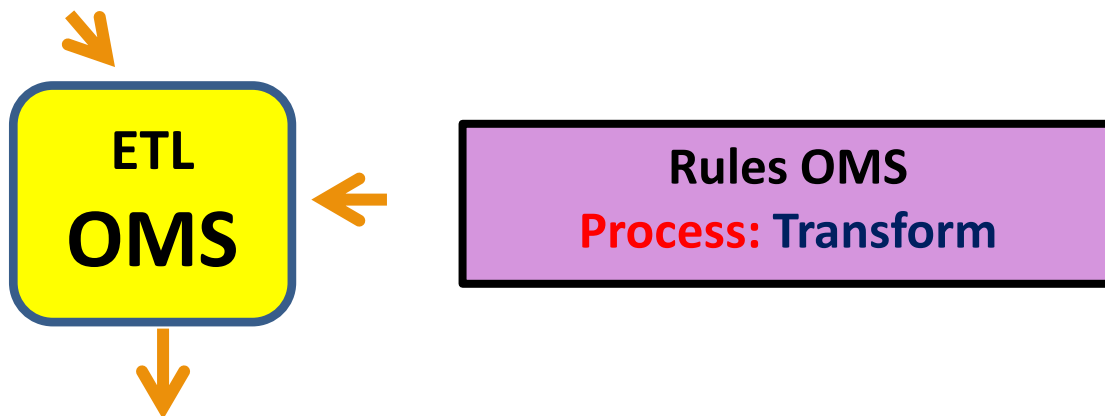




National accounts - Example **COICOP 1211**

From input data:

SNI	4:e kv LP	Ack LP	4:e kv FP	Ack FP	4:e kv Kal	Ack Kal	Ref.period	Ursprungs- Källa	Uppgifts- status	Närmaste Källa	Inkom	(Gen)	Omgång
96.02	10,0	8,6	7,1	5,3	6,9	5,3	kv4 2015	OMS	Hämtad	Insamling	2016-02-10 12:00	1	INS2015Q4
96.03-96.09	5,9	6,7	3,1	3,7	3,1	3,8	kv4 2015	OMS	Hämtad	Insamling	2016-02-10 12:00	1	INS2015Q4



NR-SNI	Uppgift	Pristyp	(Värde- typ)	Ref. period	Grund Källa	Uppgifts- status	Närmaste Källa	Tidsstämpel	(Gen)	Omgång
S9602	1,100	LP	Omsindex	kv4 2015	OMS	Rådata	NR anpassning	2016-02-10 12:10	1	INS2015Q4
S9604	1,059	LP	Omsindex	kv4 2015	OMS	Rådata	NR anpassning	2016-02-10 12:10	1	INS2015Q4





National accounts - Example

COICOP 1211

NR-SNI	Uppgift	Pristyp	(Värde- typ)	Ref. period	Grund Källa	Uppgifts- status	Närmaste Källa	Tidsstämpel	(Gen)	Omgång
S9602	1,100	LP	Omsindex	kv4 2015	OMS	Rådata	NR anpassning	2016-02-10 12:10	1	INS2015Q4
S9604	1,059	LP	Omsindex	kv4 2015	OMS	Rådata	NR anpassning	2016-02-10 12:10	1	INS2015Q4

Information om korrigerig
Vem: **Henrik Romanov**
När: **2016-02-11**
Korrigerig: **0,026**
Typ av korrigerig:
Kommentar: *Korrigerig p.g.a. att
begravningsbranschen påverkar
negativt till utvecklingen*

**Editing
OMS**

Editing rules OMS
Process: Editing

NR-SNI	Uppgift	Pristyp	(Värde- typ)	Ref. period	Grund Källa	Uppgifts- status	Närmaste Källa	Tidsstämpel	(Gen)	Omgång
S9602	1,100	LP	Omsindex	kv4 2015	OMS	Rådata	NR anpassning	2016-02-10 12:10	1	INS2015Q4
S9604	1,090	LP	Omsindex	kv4 2015	OMS	Källkorrigerad	NR anpassning	2016-02-11 10:00	2	INS2015Q4



Thanks

- Klas Blomqvist – klas.blomqvist@scb.se
- Eva Holm – eva.holm@scb.se

