

Insight into the Nordic Region and NordMap – web mapping tool

Shinan Wang, Junior Cartographer/GIS Analyst

28th June 2017, Geneva

Outline

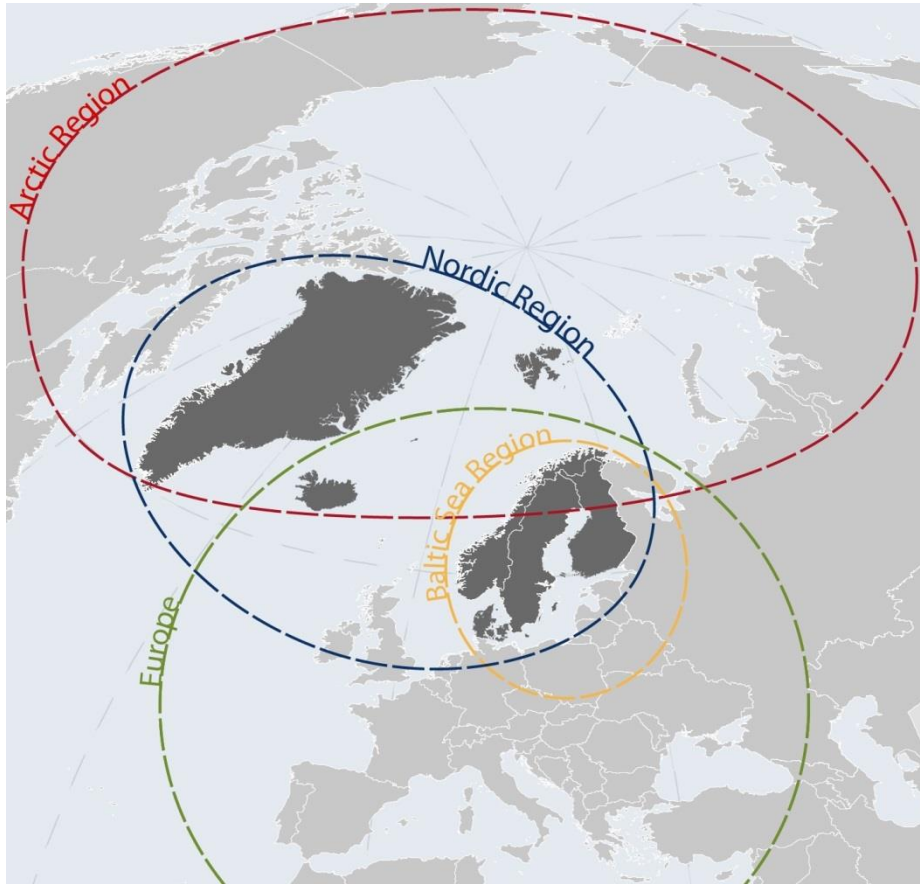
- 1 Nordregio**
2. Statistics, maps and The State of the Nordic Region
3. NordMap

Research centre under the Nordic Council of Ministers

- 43 staff members (30 researchers)
- 19 nationalities
- Situated in Stockholm
- Annual grant from Nordic Council of Ministers: ca 1/3 of budget
- National and international research funding and commissions
- Applied research to provide policy-relevant knowledge and comparative studies for Nordic decision-makers
- Main research fields:
 - Rural development: demography, socio-economic analysis
 - Urban planning: sustainable city regions
 - Green growth: bioeconomy, innovation and entrepreneurship
 - Arctic: sustainable development, business development & tourism, governance, youth
- Other core competencies: mapping and GIS analysis, communications and outreach



Geographic scales

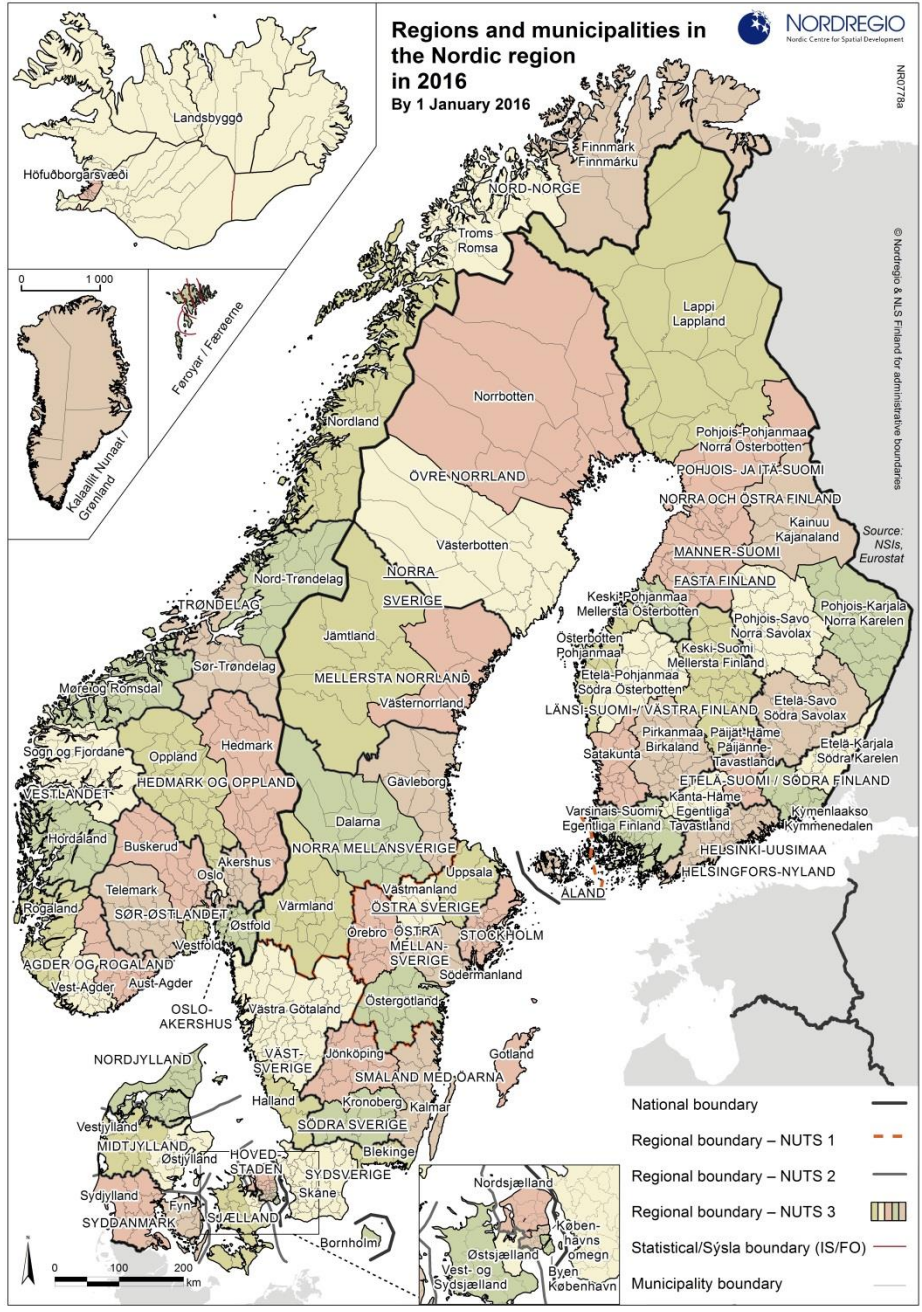


- Nordic region
- Baltic Sea Region
- Europe
- The Arctic
- Other case study areas

Outline

- 1 Nordregio
2. **Statistics, maps and The State of the Nordic Region**
3. NordMap

Regions and municipalities in the Nordic region
in 2016
 By 1 January 2016



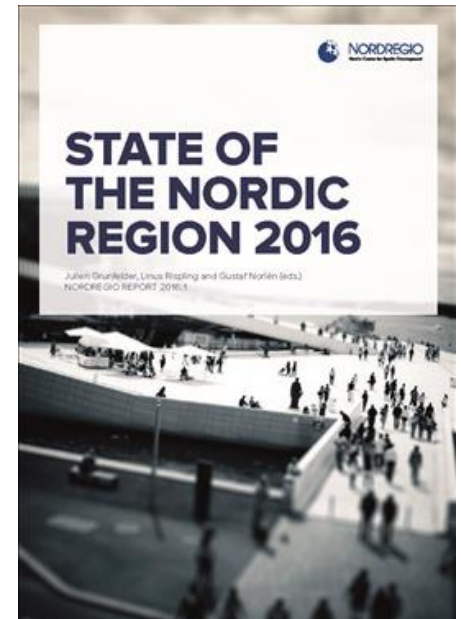
1. The Nordic Region

- Harmonizing data from national statistics
- Challenges especially in independent island states
 - Regional level
 - Municipal level

1. The Nordic Region

Nat	NUTS 0	DK	FI	IS	NO	SE	SNUTS 0	FO	GL
Regional	NUTS 1		Manner-Suomi/ Fasta Finland; Ah- venanmaa/ Åland 2			Landsdel 3	SNUTS 1		
	NUTS 2	Region 5	Suuralue; Storområde 5		Landsdel 7	"Riks- område 8	SNUTS 2		
	NUTS 3	Landsdel 11	Maakunta Landskap 19	Hagskýr- slu-svæði 2	Fylke 19	Län 21	SNUTS 3		
Local	LAU 1	Kommune 98		Lands- væði 8	Økonom- isk region 89		SNUTS 4	Sýsla 6	
	LAU 2	Sogn 2174	Kunta; Kommun 317	Sveitar- félög 79	Kommune 428	Kommun 290	SNUTS 5	Kommuna 30	Kommune; Kommune 4

Chapter 1 Introduction.....	5
Theme 1 Demographic changes	11
Chapter 2 Urbanisation.....	12
Chapter 3 Migration.....	20
Chapter 4 Age and gender.....	28
Theme 2 Labour force	39
Chapter 5 Employment.....	40
Chapter 6 Unemployment	50
Chapter 7 Education.....	60
Theme 3 Economy	73
Chapter 8 Economic development.....	74
Chapter 9 Innovation	84
Chapter 10 Tourism	94
Theme 4 Infrastructure	105
Chapter 11 The future of Nordic climate and energy	106
Chapter 12 Housing	122
Chapter 13 Air accessibility	132
Theme 5 Measuring regional potential	139
Chapter 14 Nordregio's new Regional Potential Index	140

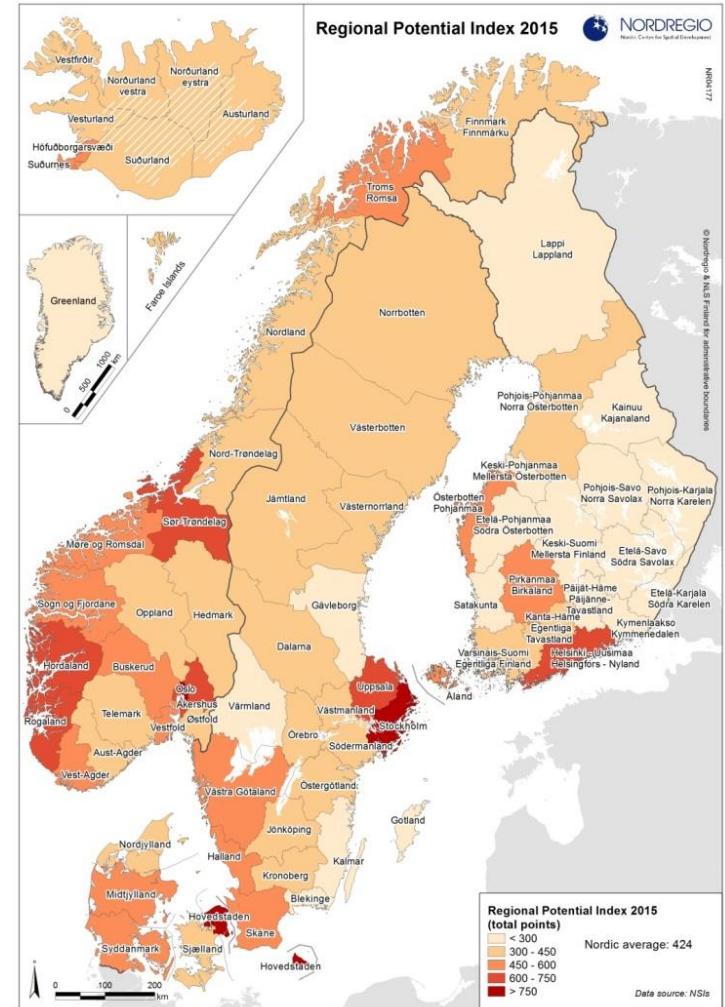


Regional Potential Index: Indicators

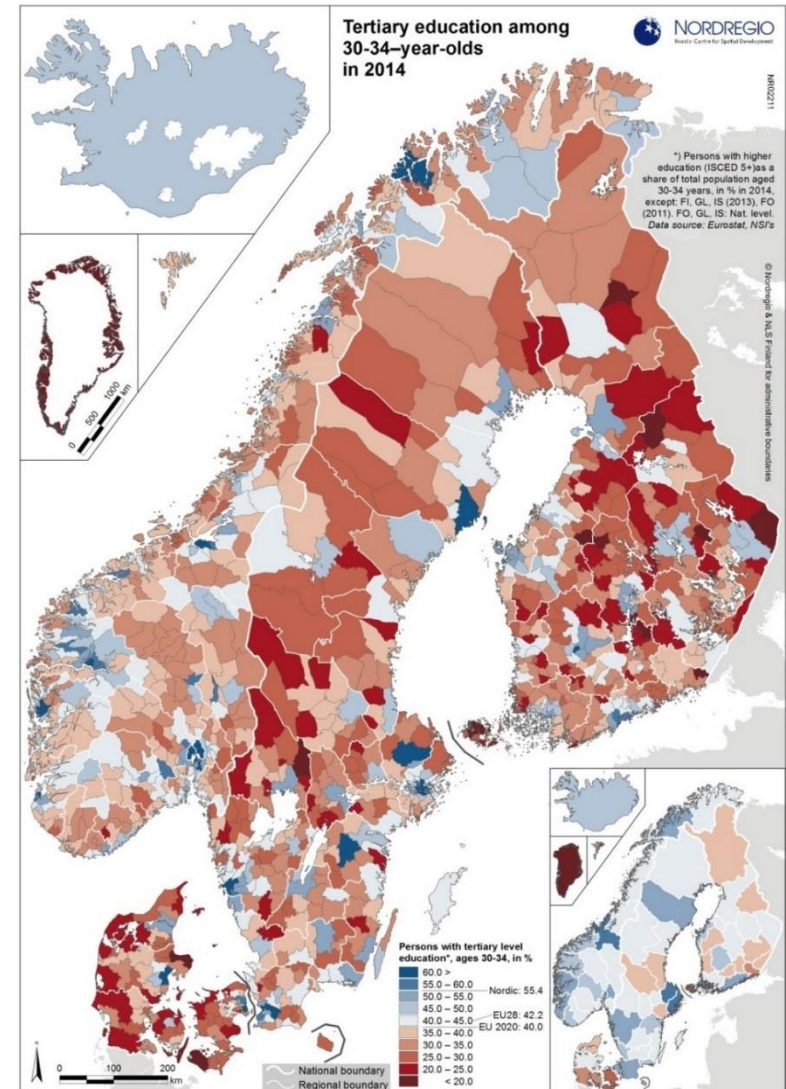
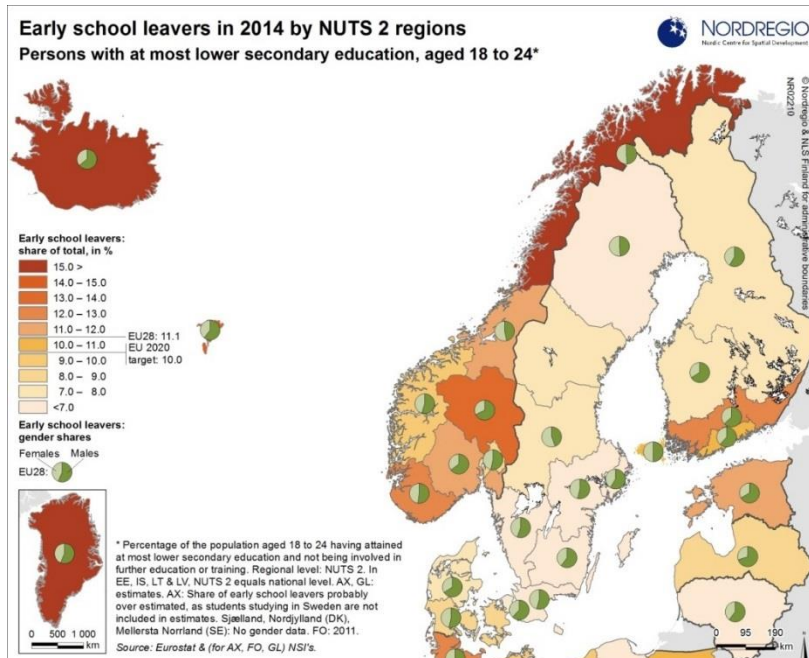
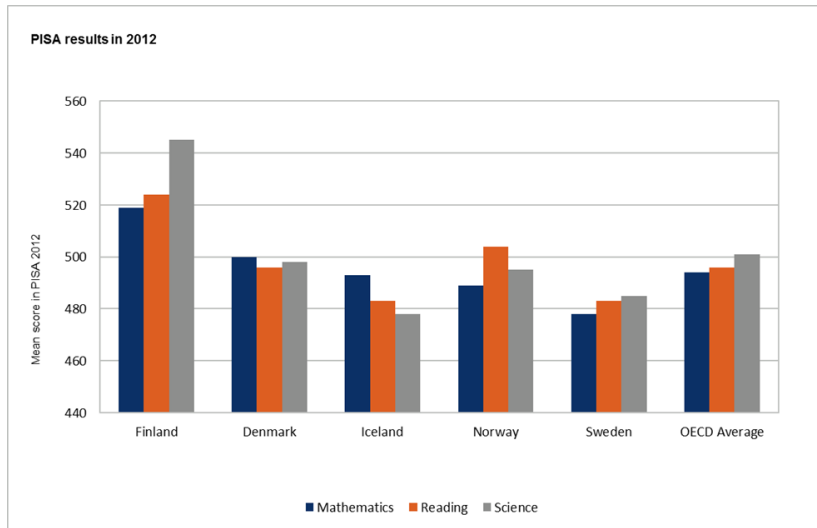
Theme	Indicators	Points allocated
Demographic potential	Population density	7,5-75
	Net migration rate	7,5-75
	Demographic dependency rate	7,5-75
	Female ratio	7,5-75
Labour market potential	Employment rate	10-100
	Share of the age group 25-64 with high education degree	10-100
	Youth unemployment rate	10-100
Economic potential	GRP/capita	20-200
	Total R&D investments	10-100

Regional potential index: top 5

1. OSLO: 758
2. HOVEDSTADEN: 756
3. STOCKHOLM: 753
4. ÅKERSHUS: 748
5. HELSINKI-UUSIMAA: 738

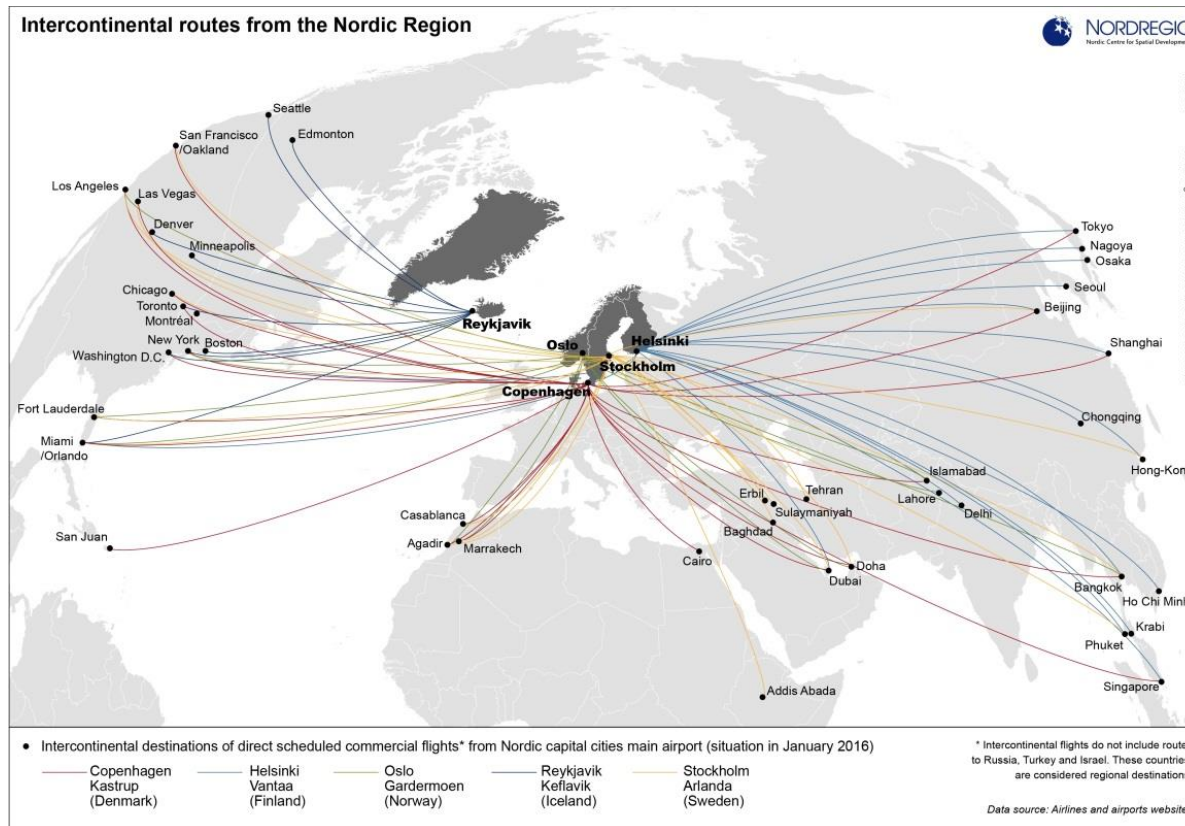


Showcasing maps



Showcasing maps

- Air accessibility: Important increase in the number of international routes.



Outline

1. The Nordic Region
2. The State of the Nordic Region
3. **NordMap**

Why NordMap?

- Show change over time
- Save time – improve workflow
- Facilitate collaboration – sharing option
- Easy to use and free of charge
- Save as PDF/PNG and share online
- Maps with the latest data
- Includes the actual data
- A number of user-interaction tools



NordMap version 1.0

- Launch: June 2015
- Focus on the core data:
 - Demography
 - Labour market
 - Economy
 - Accessibility
- Two administrative levels:
 - Municipal
 - Regional
- Development: external
- Nordregio: 3 persons



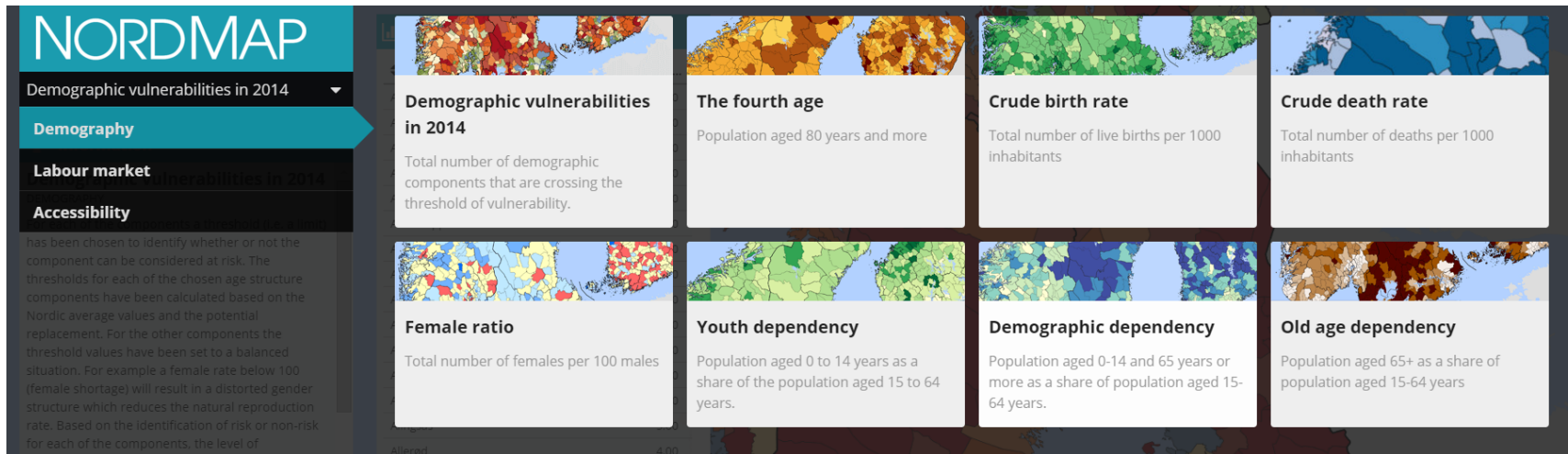
Old age dependency

Elderly population aged 65+ as a share of population aged 15-64 years



NordMap version 2.0

- Launch: May 2016
- Main improvements:
 - Layout of the website
 - Modification of the landing page
 - More flexible interface
 - Customizable legend
 - Time-Play functionality
 - Work on Ipad
- New data added
- Nordregio: 4 persons



Tour of NordMap: (<http://nordmap.se>)

NordMap

Nordic web-mapping tool


[ABOUT](#) | [NEWS FEED](#) | [CONTACT](#) | [TAKE A TOUR](#)

A new, easy and free to use web-mapping tool is here! Are you working with regional planning in the Nordic Region? Or perhaps just interested in regional and municipal differences between Denmark, Faroe Islands, Finland, Greenland, Iceland, Norway, Sweden and Åland when it comes to ageing population, labour force or even gender ratio? With NordMap you can create maps with data harmonised by Nordregio and adjust them to your needs with just a few clicks – share it, save it and use it any way you like! NordMap is easy to use and you don't need any previous mapping experience.

[BROWSE MAPS](#)

The web-mapping tool is optimized for Google Chrome and Mozilla Firefox browsers.
For small-screen devices is the functionality limited.

administration

 Nordregio

Information | Analytics | Infographics | Colours | Time series | Select similar | Sharing

5
6
7
8
9
10

NordMap: select similar

NordMap

Nordic web-mapping tool


[ABOUT](#) | [NEWS FEED](#) | [CONTACT](#) | [TAKE A TOUR](#)

A new, easy and free to use web-mapping tool is here! Are you working with regional planning in the Nordic Region? Or perhaps just interested in regional and municipal differences between Denmark, Faroe Islands, Finland, Greenland, Iceland, Norway, Sweden and Åland when it comes to ageing population, labour force or even gender ratio? With NordMap you can create maps with data harmonised by Nordregio and adjust them to your needs with just a few clicks – share it, save it and use it any way you like! NordMap is easy to use and you don't need any previous mapping experience.

[BROWSE MAPS](#)

The web-mapping tool is optimized for Google Chrome and Mozilla Firefox browsers.
For small-screen devices is the functionality limited.

administration

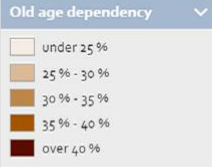
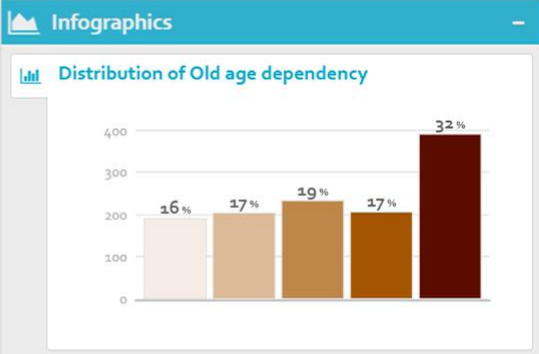
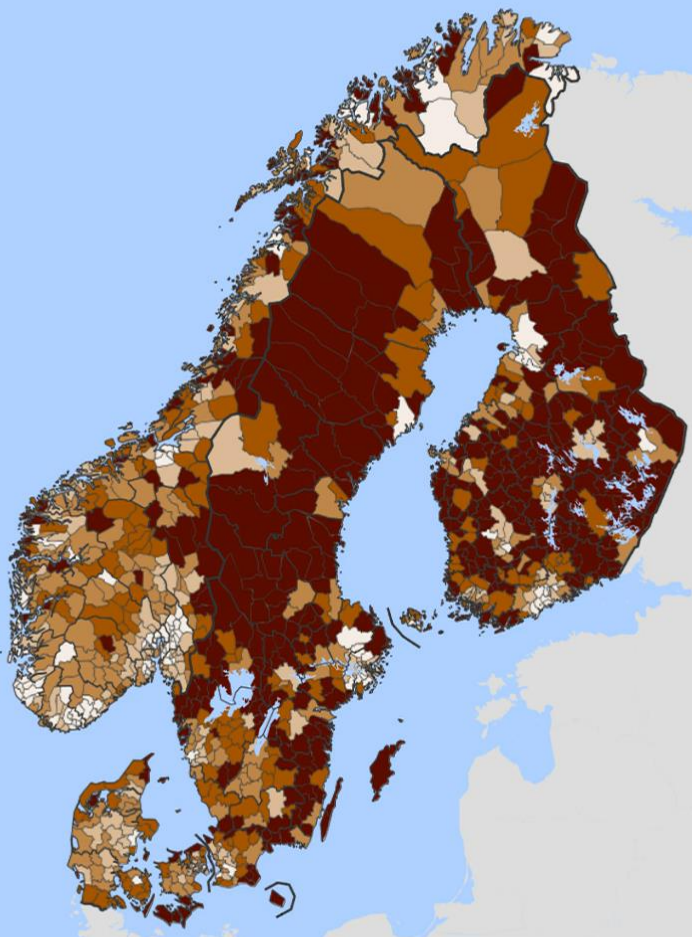
 Nordregio

Information | Analytics | Infographics | Colours | Time series | **Select similar** | Sharing

5
6
7
8
9
10

NordMap: time series

NordMap
Old age dependency



Information Analytics Infographics Colours Time series Select similar Sharing

200 km - +

NordMap: sort and save the entire map

NordMap

Demographic vulnerabilities ▾

Featured Maps

Demography

Labour Force

Economy

DISPLAY

For each of the components a threshold (i.e. a limit) has been chosen to identify whether or not the component can be considered at risk. The thresholds for each of the chosen age structure components have been calculated based on the Nordic and Baltic average values and the

NordMap

Nordic web-mapping tool


[ABOUT](#) | [NEWS FEED](#) | [CONTACT](#) | [TAKE A TOUR](#)

A new, easy and free to use web-mapping tool is here! Are you working with regional planning in the Nordic Region? Or perhaps just interested in regional and municipal differences between Denmark, Faroe Islands, Finland, Greenland, Iceland, Norway, Sweden and Åland when it comes to ageing population, labour force or even gender ratio? With NordMap you can create maps with data harmonised by Nordregio and adjust them to your needs with just a few clicks – share it, save it and use it any way you like! NordMap is easy to use and you don't need any previous mapping experience.

[BROWSE MAPS](#)

The web-mapping tool is optimized for Google Chrome and Mozilla Firefox browsers.
For small-screen devices is the functionality limited.

administration



Nordregio

Information Analytics Infographics Colours Time series Select similar Sharing

5
6
7
8
9
10

NordMap: save and share the Öresund region

NordMap

Demographic vulnerabilities ▾

Featured Maps

Demography

Labour Force

Economy

DISPLAY

For each of the components a threshold (i.e. a limit) has been chosen to identify whether or not the component can be considered at risk. The thresholds for each of the chosen age structure components have been calculated based on the Nordic and Baltic average values and the

NordMap

Nordic web-mapping tool


[ABOUT](#) | [NEWS FEED](#) | [CONTACT](#) | [TAKE A TOUR](#)

A new, easy and free to use web-mapping tool is here! Are you working with regional planning in the Nordic Region? Or perhaps just interested in regional and municipal differences between Denmark, Faroe Islands, Finland, Greenland, Iceland, Norway, Sweden and Åland when it comes to ageing population, labour force or even gender ratio? With NordMap you can create maps with data harmonised by Nordregio and adjust them to your needs with just a few clicks – share it, save it and use it any way you like! NordMap is easy to use and you don't need any previous mapping experience.

[BROWSE MAPS](#)

The web-mapping tool is optimized for Google Chrome and Mozilla Firefox browsers.
For small-screen devices is the functionality limited.

administration

 Nordregio

Information Analytics Infographics Colours Time series Select similar Sharing

100 km

5 6 7 8 9 10

Since the launch of version 2.0

May 10th 2016 – May 10th 2017

5 840 visits



Country	Sessions	Sessions	Contribution to total: Sessions
	5,840 % of Total: 100.00% (5,840)	5,840 % of Total: 100.00% (5,840)	
1. Sweden	1,454	24.90%	
2. Finland	946	16.20%	
3. Norway	810	13.87%	
4. United States	468	8.01%	
5. Denmark	440	7.53%	
6. United Kingdom	360	6.16%	
7. Iceland	260	4.45%	
8. Russia	195	3.34%	
9. Czechia	112	1.92%	
10. Germany	69	1.18%	

Thank you!

shinan.wang@nordregio.se
maps@nordregio.se
nordmap@nordregio.se