

Monitoring and evaluation of climate change adaptation progress

Jaroslav Mysiak, PhD
Euro-Mediterranean Centre on Climate Change and
University Ca' Foscari Venice

UNECE Expert Forum for Producers and Users
of Climate Change-Related Statistics

Venice, 29/09/2020

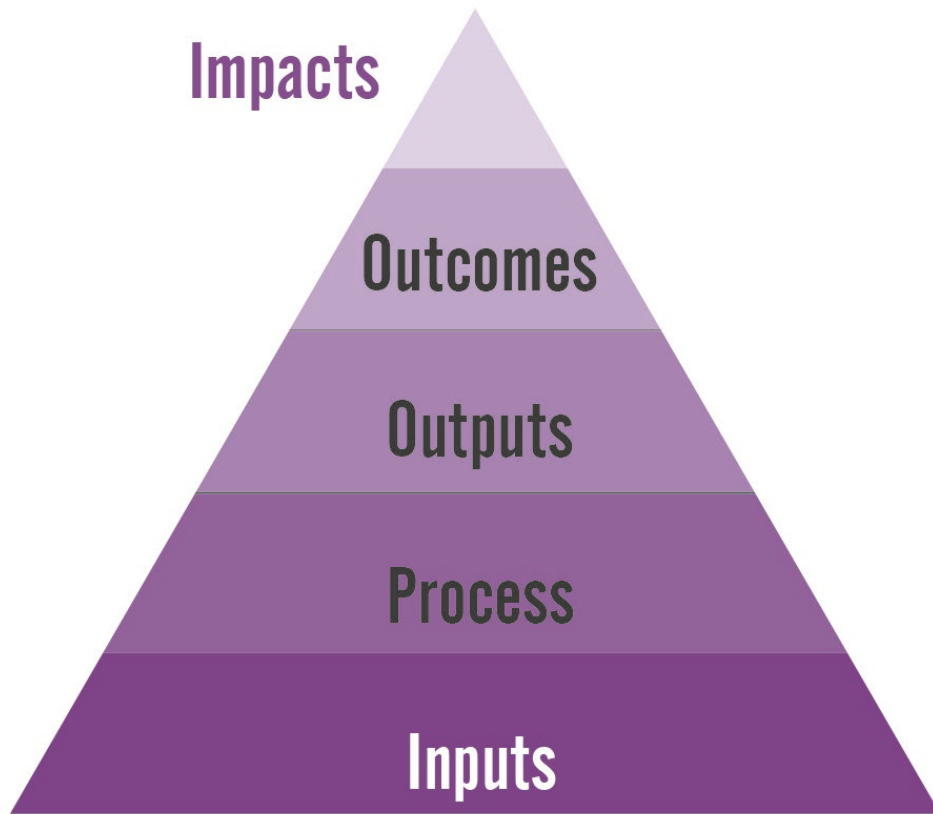
Progress and challenges

- All EU and nearly all EEA countries have national adaptation strategies and/or plans in place – but there is a large heterogeneity of what is covered and to what detail
- All steps of adaptation policy cycle should be evaluated in terms of methods used (and their suitability) and the effectiveness/efficiency of action – but there is no universal unit of measurement for adaptation,
- Monitoring, reporting and evaluation is important at all level of governance - but the scope and objectives are different
- Indicators are a key way of connecting levels and seeking synergies, but they are not necessarily directly transferable across levels and policy domains

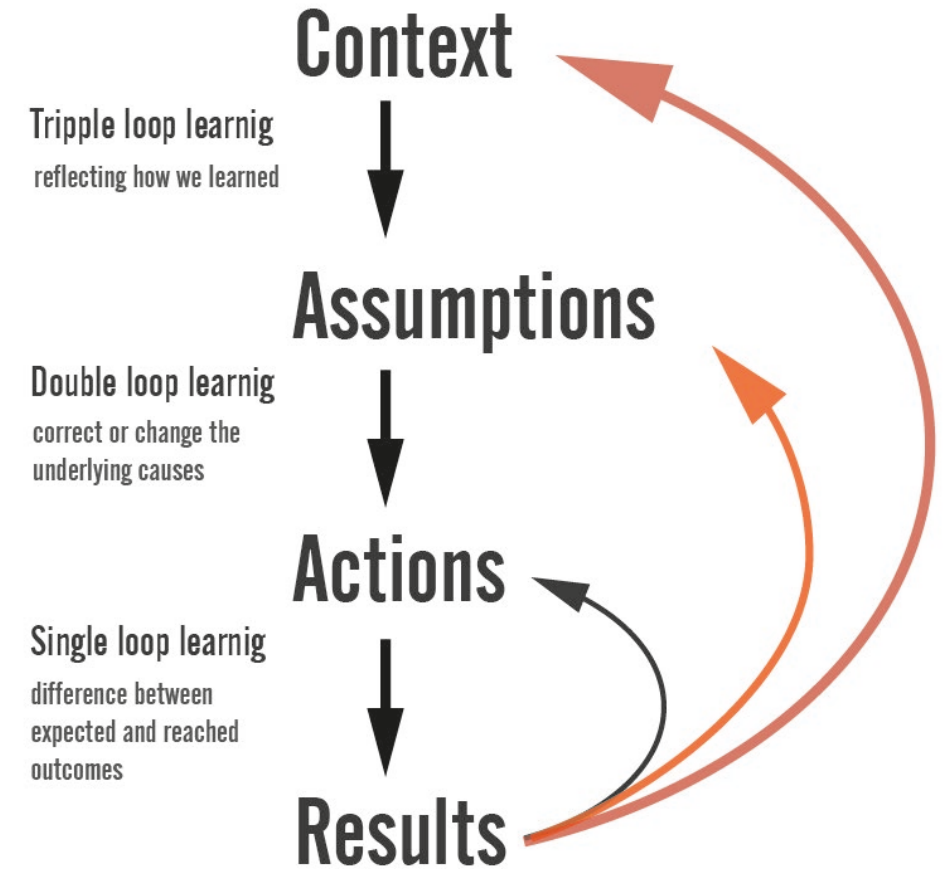
Monitoring and evaluation of national adaptation policies throughout the policy cycle



Latest MRE report of the European Environment Agency to be released in two weeks



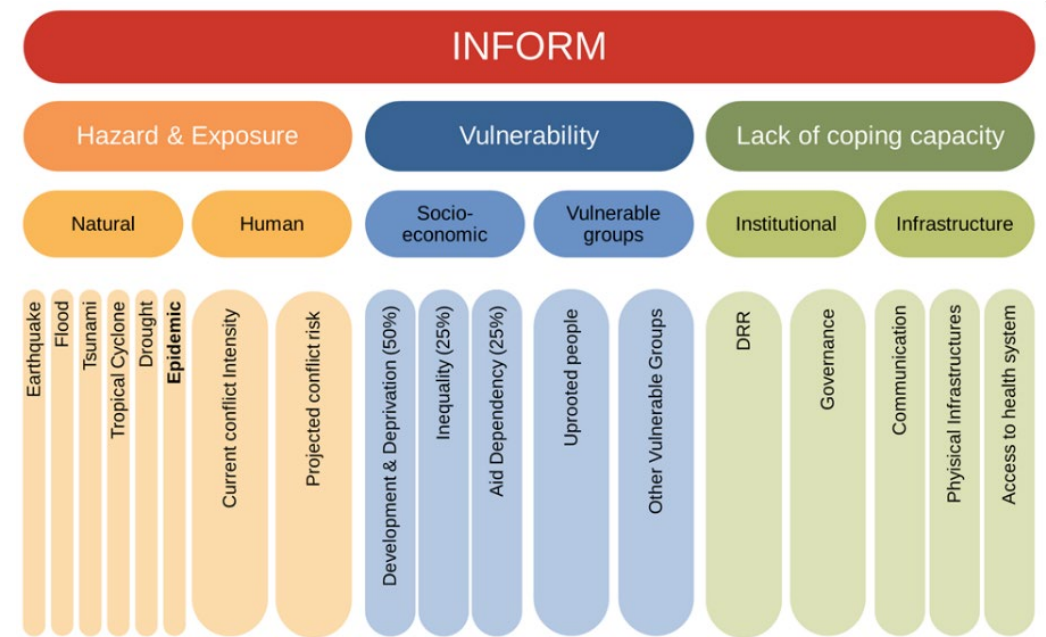
MRE employs indicators related to adaptation processes and inputs, outputs and outcomes. Outcome indicators address the overarching impact of adaptation action on vulnerability, adaptive capacity or resilience. It is easier to describe the progress using process/input or output indicators, but MRE systems are expected to determine the progress that has been made towards outcomes.



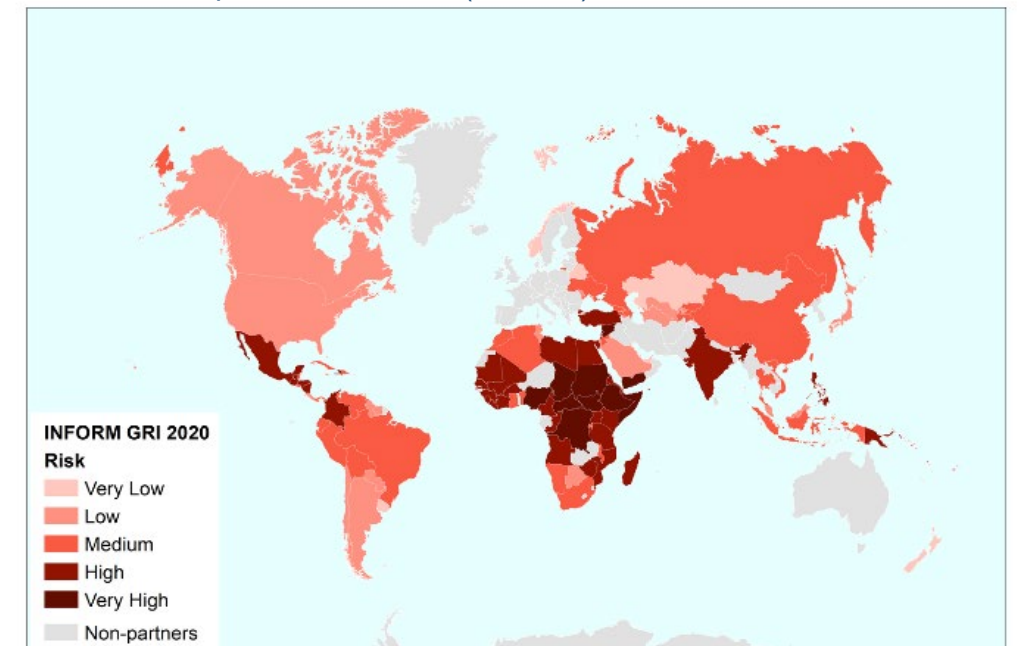
MRE to continuously improve existing knowledge on climate change impacts and vulnerability and/or to help identify key challenges, opportunities and remaining knowledge gaps

Composite indices

- Composite indices translate many-sided indicators of progress into statistical measures of overall performance, building upon frameworks that determine how individual indicators are selected, combined and weighted.
- Inter-Agency Standing Committee and the Joint Research Centre developed the Index for Risk Management for humanitarian crises and disasters.
- The Notre Dame Global Adaptation Index is an index which measures climate vulnerability and adaptation readiness based on two dimensions (vulnerability to climate disruptions and readiness to leverage private and public sector investment for adaptive actions) and 45 core indicators.



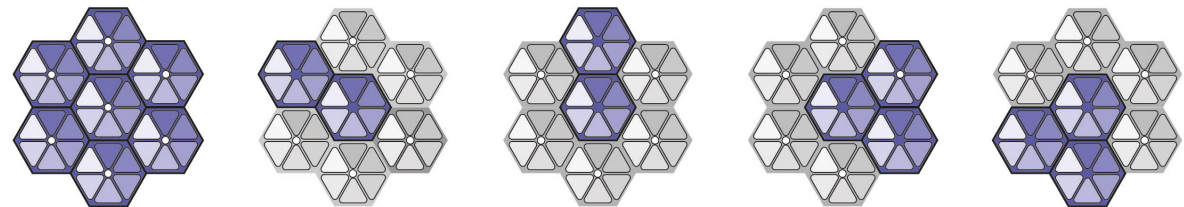
INFORM RISK conceptual scheme (above) and countries' performance (below)



Peer-review

- Peer reviews as governance instruments are 'systematic assessments of the performance, with the ultimate goal of helping the reviewed entity to improve its policy-making, adopt best practices, and comply with established standards and principles'.
- Peer reviews are characterised by elements of mutual learning, exchange of good practices and fostering cooperation across countries. While there is limited evidence of applying peer reviews in the field of NAPs, experience of their application is available from related policy fields, including evaluation of national sustainable development policies, disaster risk management policies and environmental performance.

Peer review assessment framework developed by CMCC to assist the Union Civil Protection Mechanism





Proposed Mission: **A Climate Resilient Europe**

Prepare Europe for climate disruptions and accelerate the transformation to a climate resilient and just Europe by 2030

Report of the Mission Board for
Adaptation to Climate Change,
including Societal Transformation

Independent
Expert
Report



<https://bit.ly/32Ru1Kf>

Research and
Innovation

The vision of this Mission
is to turn the urgent challenge of adapting to climate
change into an opportunity to make Europe more
resilient, climate prepared and just.



Accelerate transformation

Prepare Europe

Citizens & communities

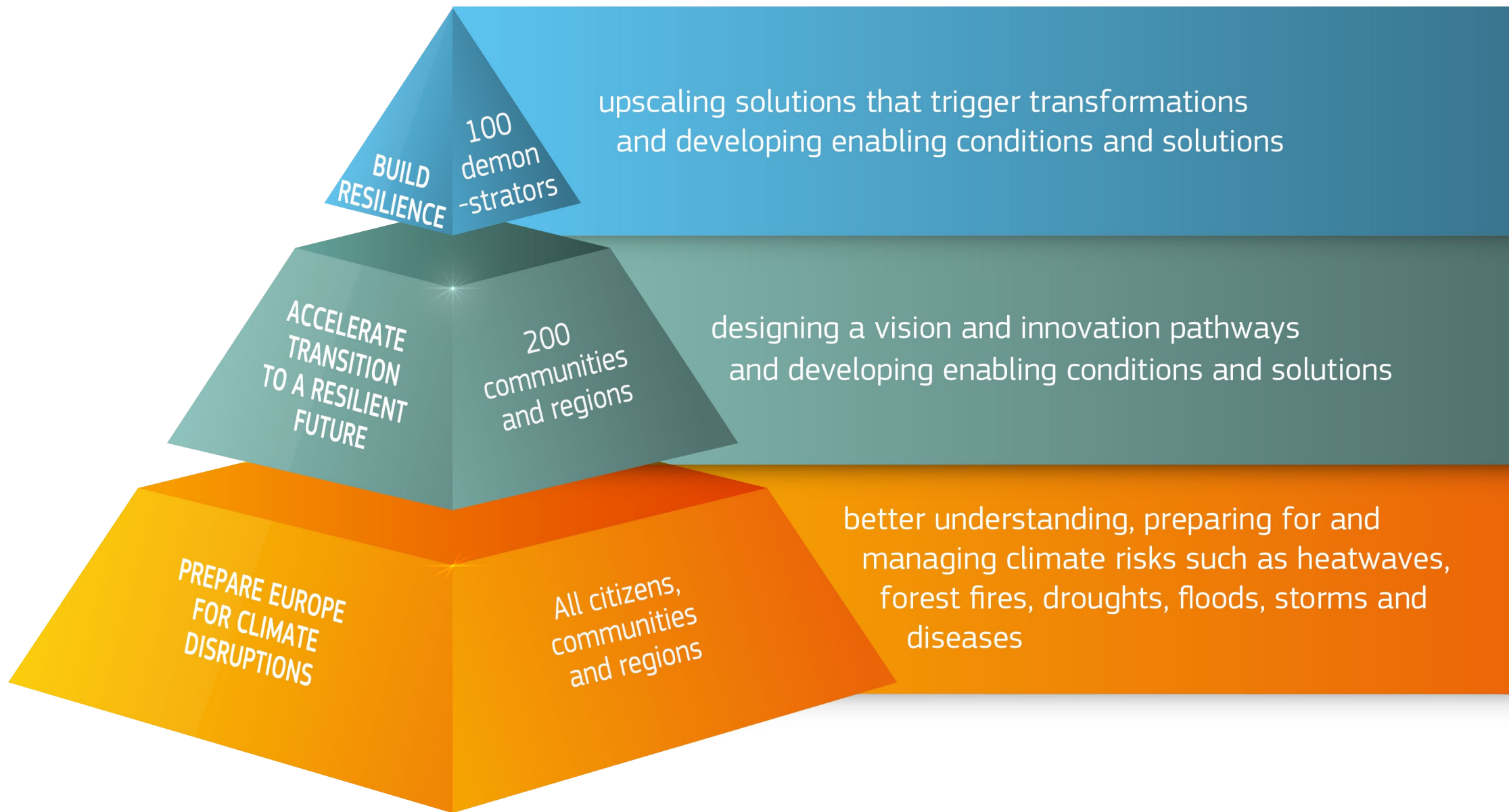
- ✓ easy access to knowledge on climate risk,
- ✓ risk management plans,
- ✓ safe and accessible social infrastructure and services



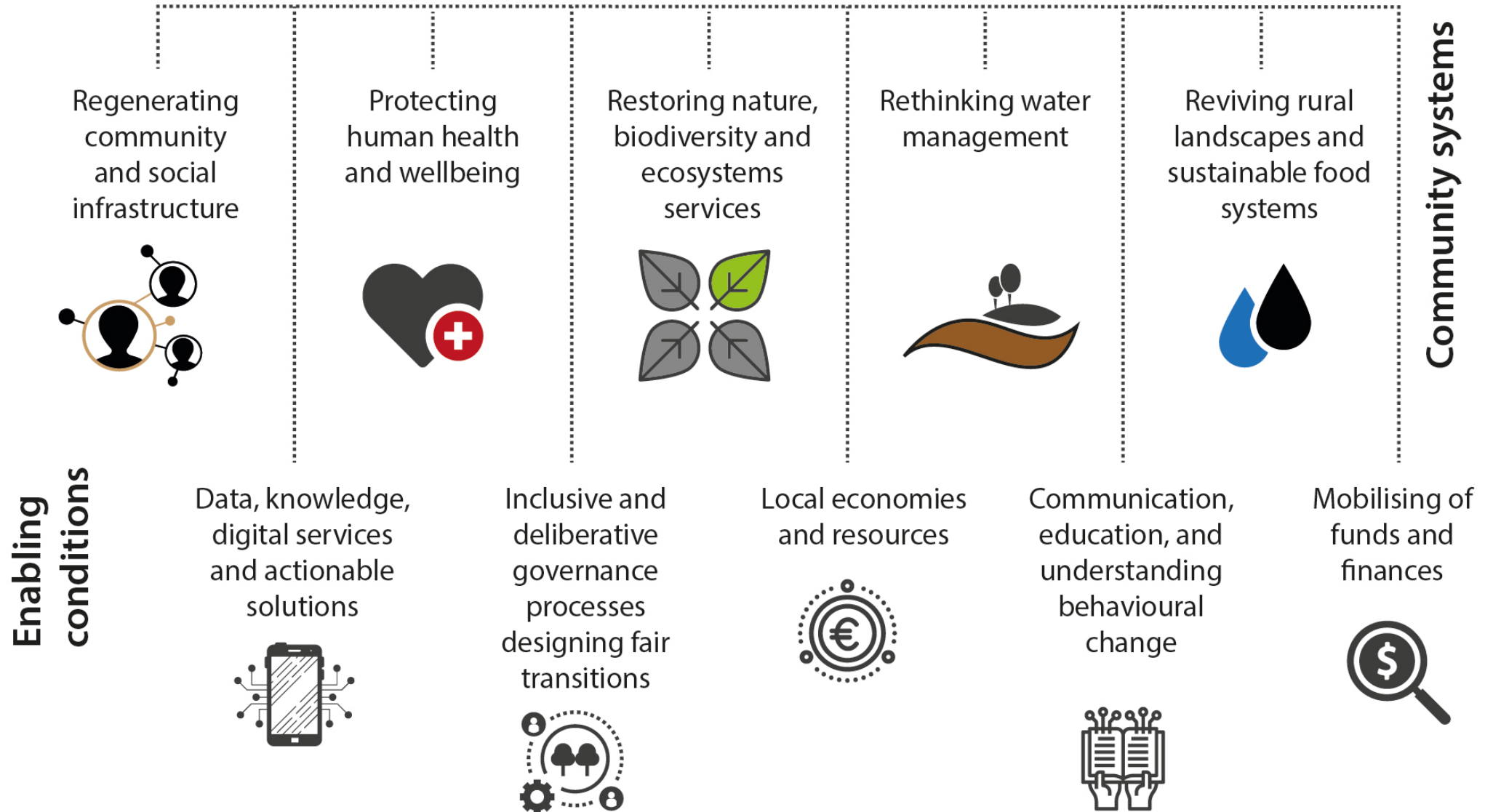
200 regions and communities to test transformative solutions & prepare for deep-rooted innovations



100 deep demonstration of climate resilience with demonstrated impact at scale, and cross-border value



Innovation with and within



The Mission understands and employs innovation as a way to catalyse systemic change.

Co-design to foster societal ownership and long-term sustainability

- build visions of climate resilience and adaptation, tailor-made to local and context-specific challenges and climate risks
- co-design climate-resilient adaptation pathways,
- sign a climate resilience contract

Co-implementation to foster innovation and close engagement of citizens, businesses and industries, governments, entrepreneurs and investors as well as scientists

- foster co-production of data and knowledge and co-design of climate services and innovative solutions,
- employ citizen science, citizen observatories and other means of joint knowledge gathering and monitoring

Co-evaluation – joint monitoring, assessment and evaluation of the progress and outcomes of the Mission.

- provide feedback on whether the transformative vision and targets are responsive to the principles that guide the Mission and whether results have been accomplished,
- enable new information and lessons learned to feed back to policy review and agenda setting at the European, national and local scales,
- help to identify knowledge and innovation gaps, and design mechanism to create feedback loops with knowledge generated through Horizon Europe and various other innovation platforms

Thank you for your attention

jaroslav.mysiak@cmcc.it

