



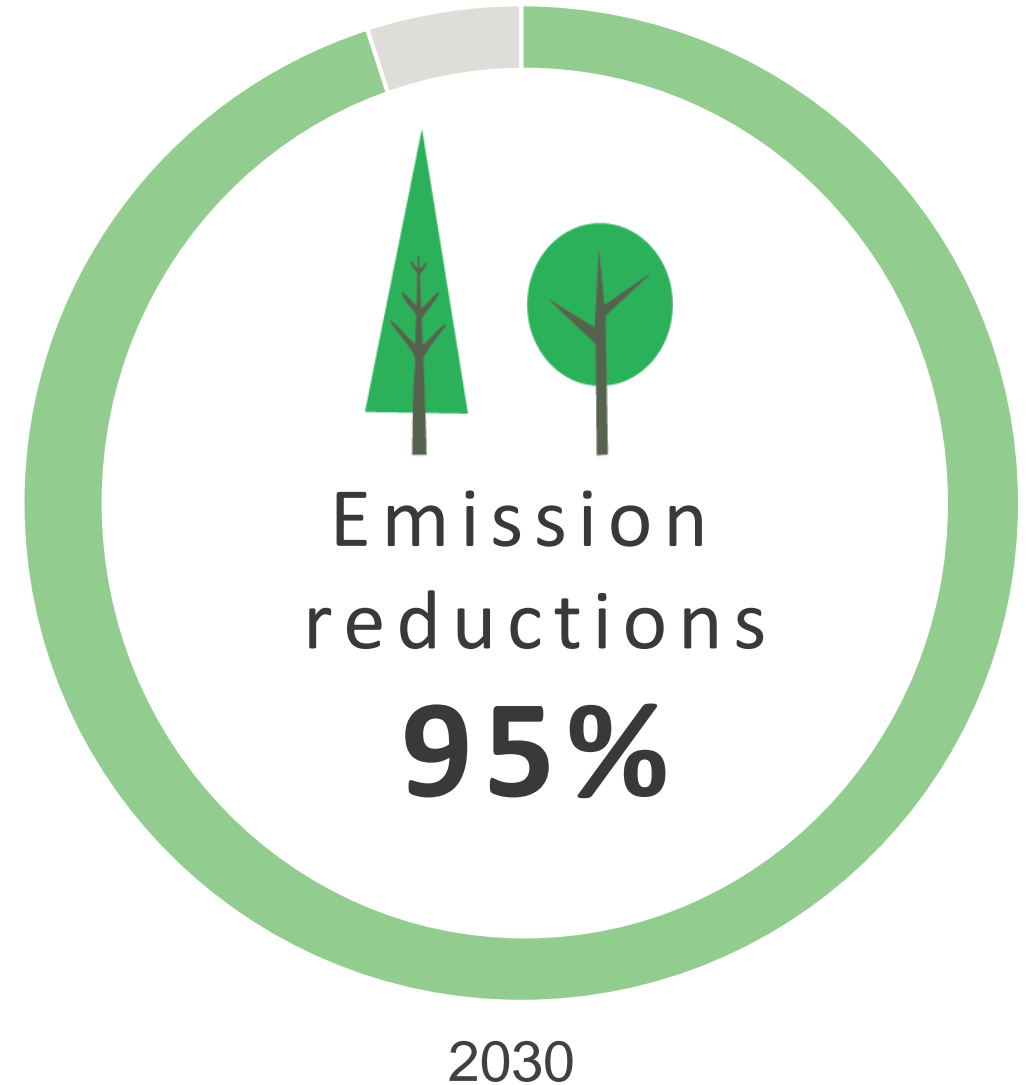
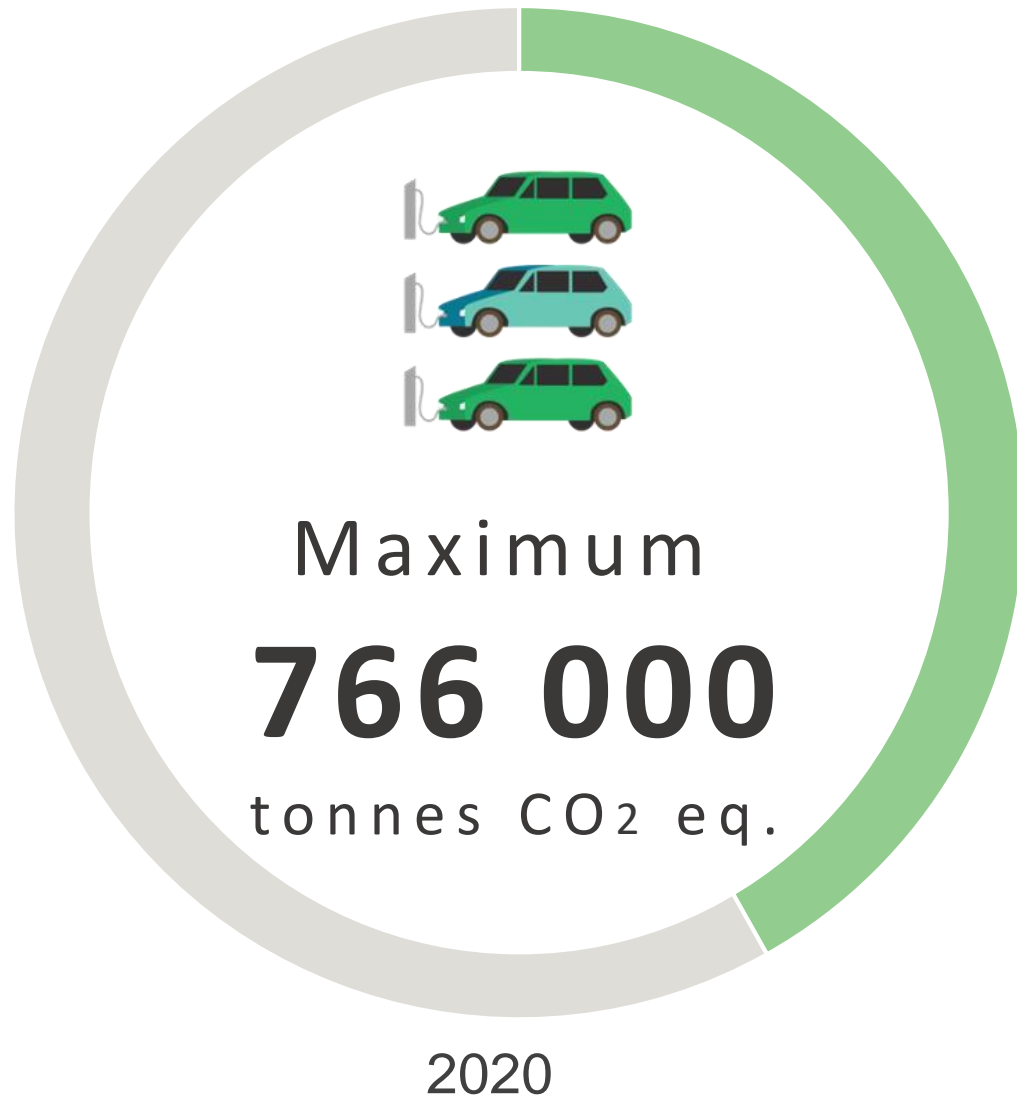
City of Oslo

Use of municipal GHG inventories in Oslo's climate budget



Nina Holmengen, Oslo Climate Agency
Nina.Holmengen@kli.oslo.kommune.no

Oslo's climate targets 2020 and 2030



The Climate Budget - an efficient governance system

- Integrated in the ordinary municipal budget
- Identifies emission reduction measures
- Identifies costs and responsible unit for implementation
- Reporting as part of the ordinary budget cycle



City of Oslo
Municipality of Oslo



Getting the methodology right

System boundaries of the climate budget

- Direct emissions (scope 1)
- Indirect emissions not included
- Geographical area
- Includes all emission sectors in available statistics
- Combination of national, regional and local measures
- Combination of quantified and non-quantified measures

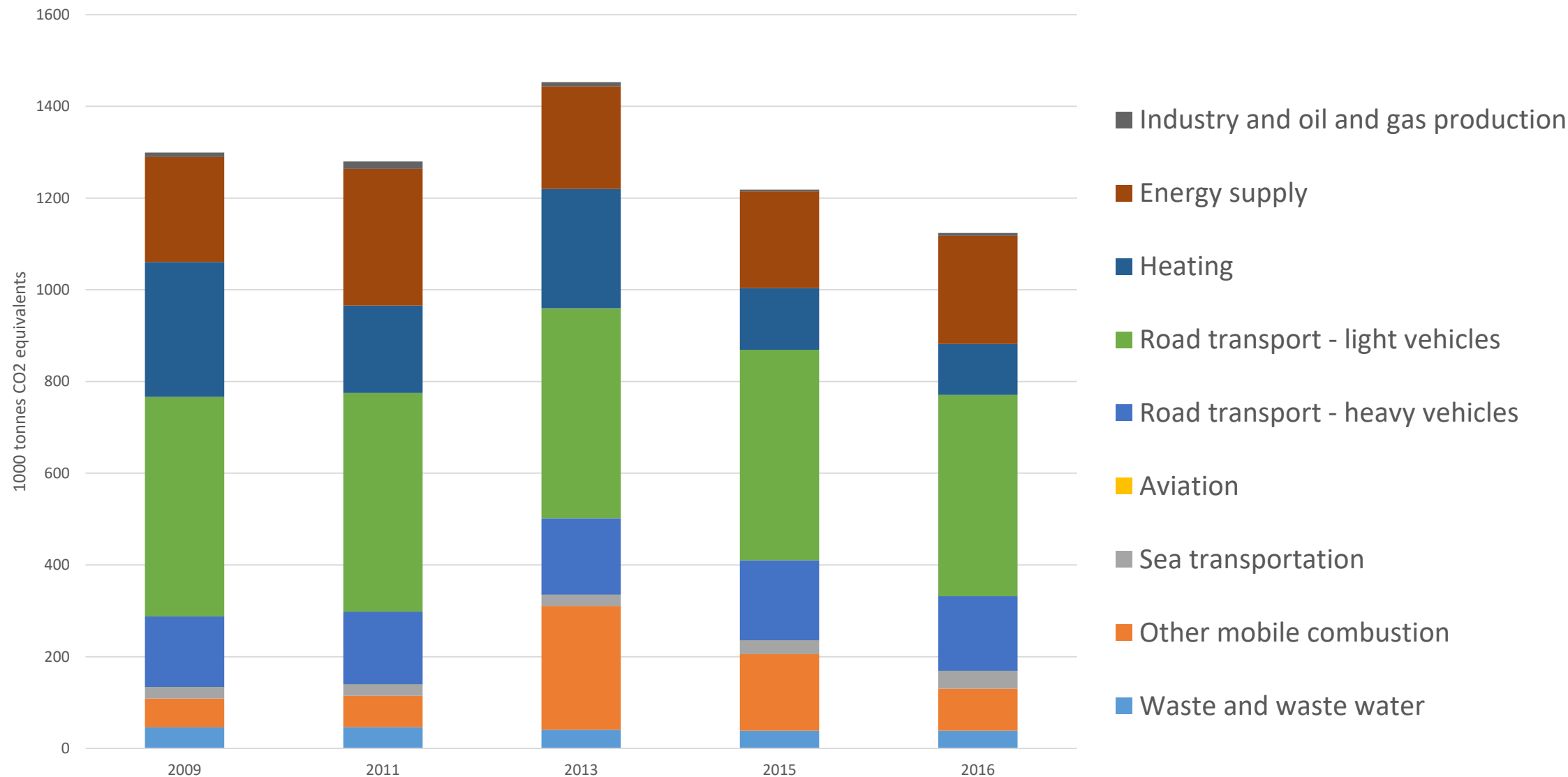
Technical report

- Methodology
- Sources
- Uncertainty



Good data on GHG emissions is essential
for Oslo's work to reduce emissions

Oslo's GHG-emissions, 2009-2016

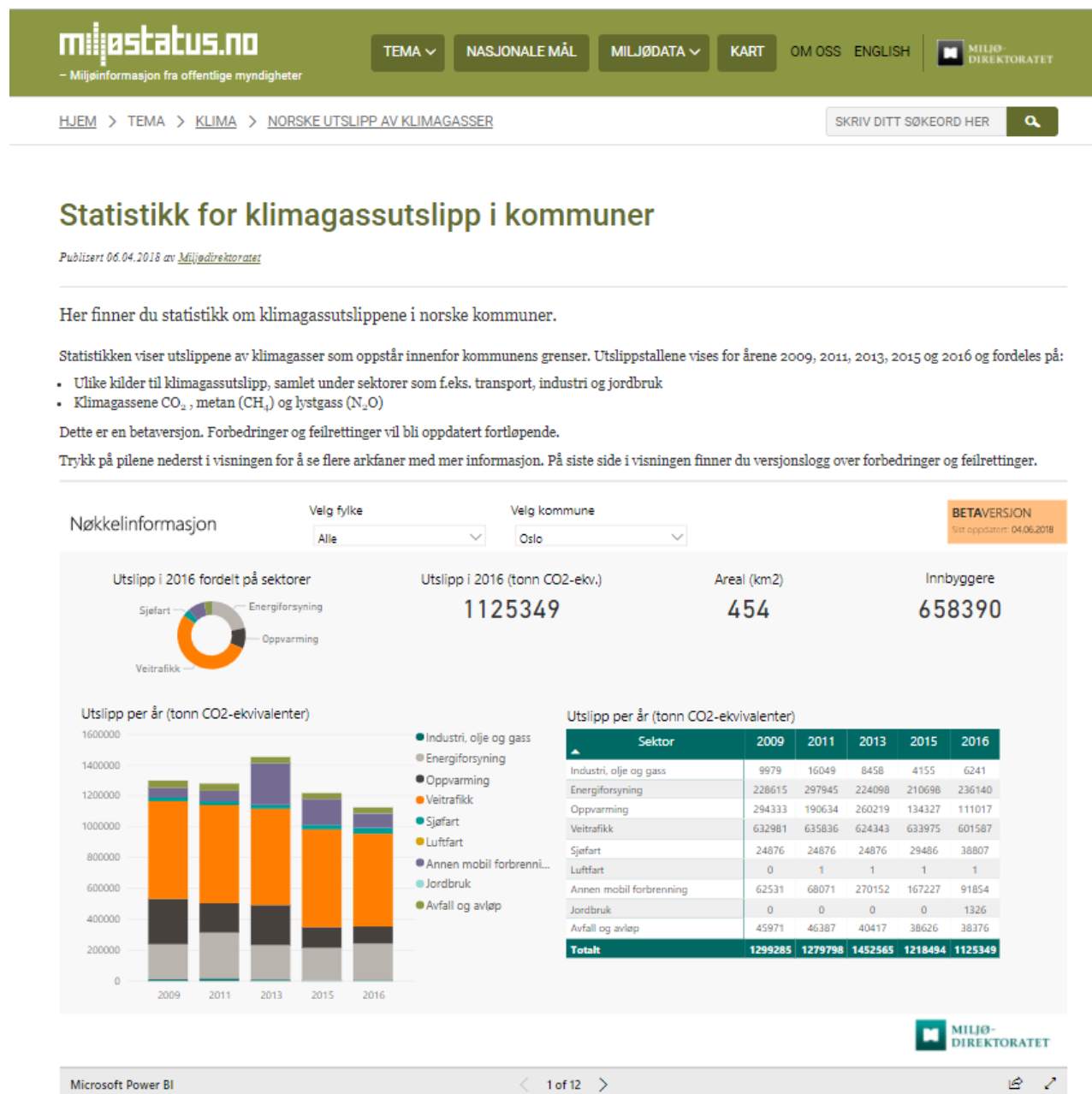


Brief history of the statistics on GHG emissions in municipalities in Norway

- Developed in concert with gridding of emissions of long-range transboundary air pollutants
- Statistics Norway produced official statistics about GHG emissions from municipalities until 2012, then the statistics were discontinued
- High demand from users
- Political decision to develop new statistics. Task assigned to the Norwegian Environment Agency
- Three-year development project
 - Lead by the Norwegian Environment Agency
 - In partnership with the Norwegian Association of Local and Regional Authorities (KS)
 - Statistics Norway data provider and collaborator
- First version published 2018 – and the development continues

Content of the statistics

- Three pollutants (CO₂, N₂O and CH₄)
- From 2009 onwards
- Nine main sectors
 - 38 emission sources
- Available online and as downloadable Excel sheets
(<http://www.miljostatus.no/tema/klima/norske-klimagassutslipp/klimagassutslipp-kommuner/>)



De to første sidene i visningen gir en oversikt over utslippene i kommunen som er valgt. De andre sidene viser statistikken fordelt på sektorer, med tilhørende

Sammenligne med andre

Velg fylke

Alle

Velg kommune

(Flere valg)

Velg år

2016

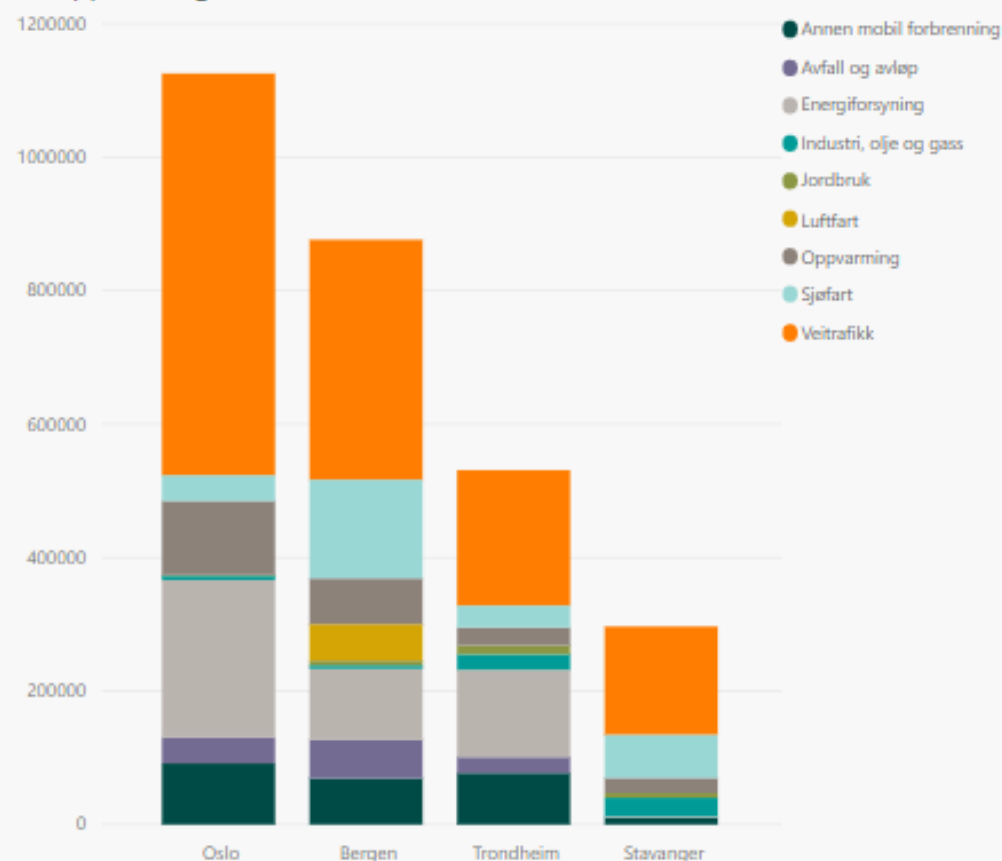
Velg utslippskilde

Alle

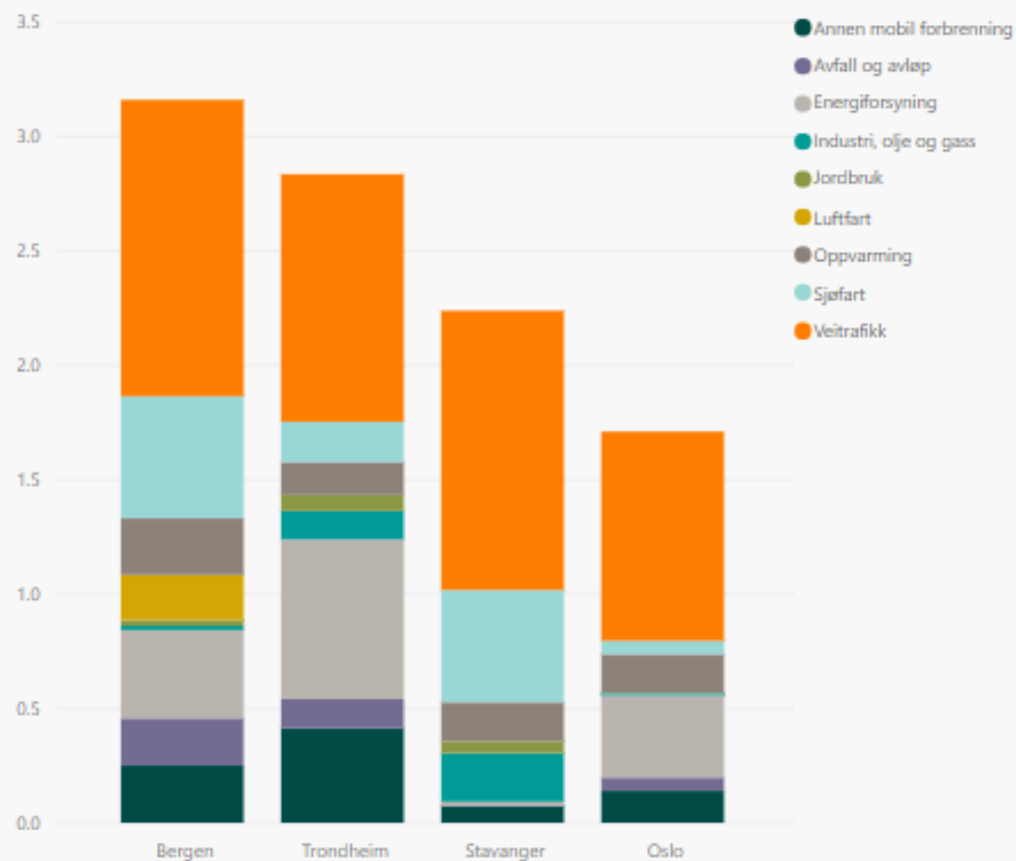
BETAVERSJON

Sist oppdatert: 04.06.2018

Utslipp for valgt år (tonn CO2-ekvivalenter)



Utslipp per innbygger for valgt år (tonn CO2-ekvivalenter)



Cooperation on production of statistics

- Inspired by the National System for GHG inventories
- The Norwegian Environment Agency
 - Responsible for the compilation of the statistics
 - Produces emission estimates for some sources
- Statistics Norway
 - Produces emission estimates for emission sources where they have the best data
- Other institutions
 - Contribute with their emission estimates and data



Reciprocity between statistics and mitigation analyses at the local level

Statistics

- Frequency of publication
- New emission sources
- Time series 2009 - 2016
- Recalculation (road transportation)
- Lack of activity data and EFs
- Uncertainty



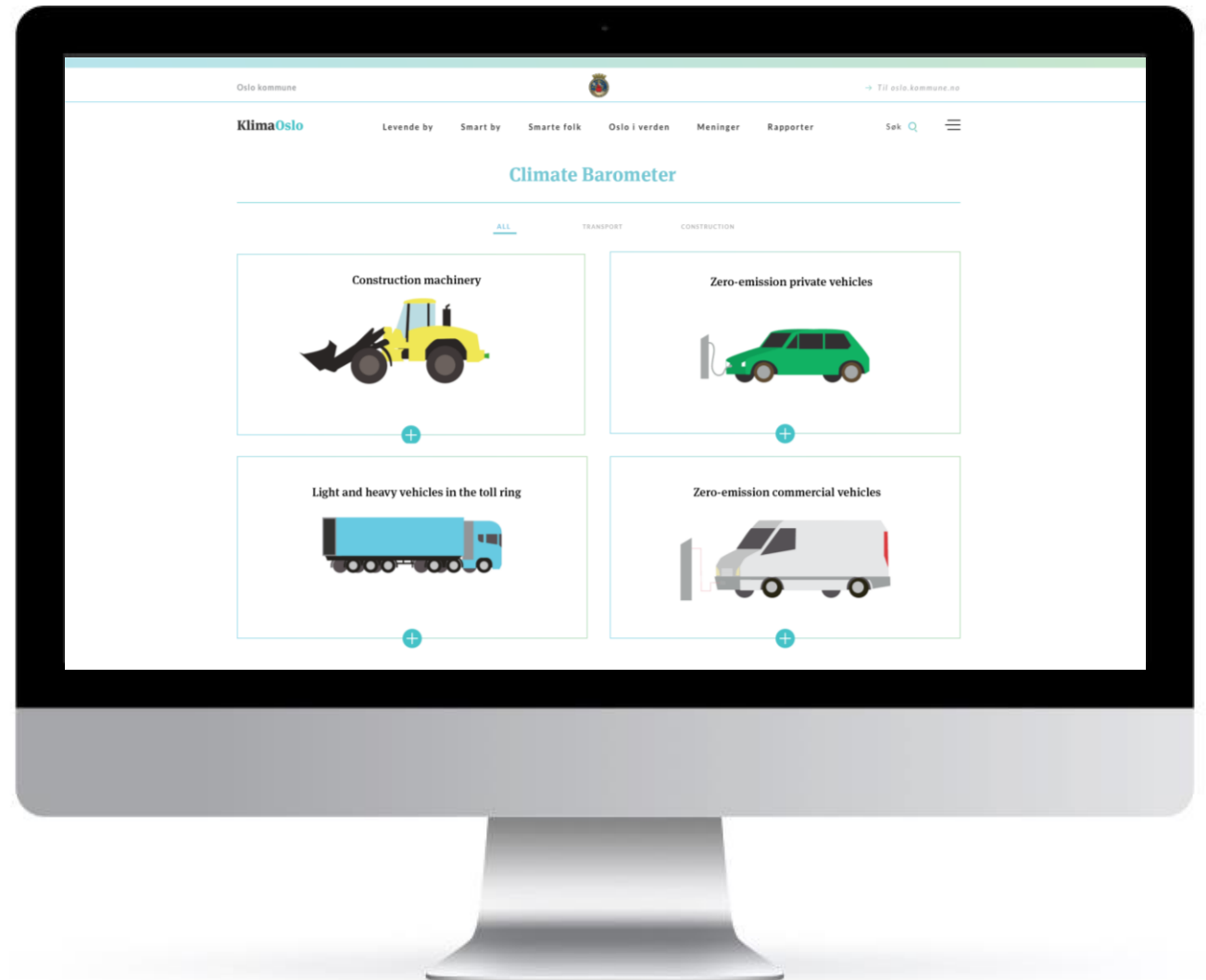
Mitigation analyses

- Impact assessment
- Uncertainty
- Reporting
- Verification
- Assessment of target achievement

Oslo's Climate Barometer

- 14 indicators
- Updated 3 times a year
- Results are published at our website

<https://www.klimaoslo.no/>



Dialogue between users and producers of the municipal GHG inventories

- Reference group in the development project of the statistics
- Expert group for the climate budget
- Error reporting from users
- Collaboration between municipalities in highlighting data needs and possibilities



City of Oslo

Thank you for your attention!

