

Disaster Related Statistics: the experience of Brazilian Institute of Geography and Statistics

Denise Kronemberger
IBGE

Expert Forum for Producers and Users of Climate Change-Related Statistics

Geneva, Switzerland

October 3, 2018

Instituto Brasileiro de Geografia e Estatística IBGE



Population in Risk Areas in Brazil (IBGE and CEMADEN)

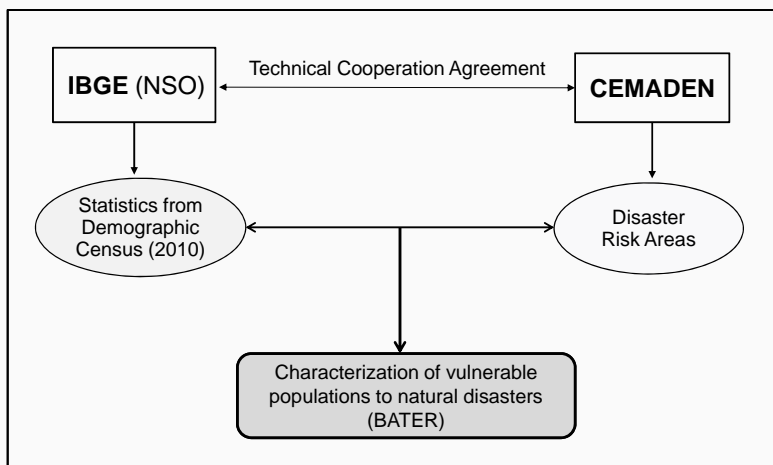


<https://www.ibge.gov.br/apps/populacaoareasderisco/>

Instituto Brasileiro de Geografia e Estatística IBGE



Methodology



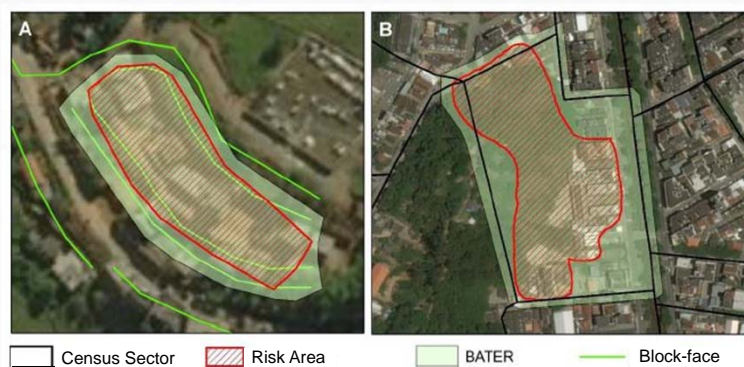
Variables considered (318): age, gender, literacy, income, access to water supply, sanitation, solid waste collected and electricity.

Scope of Research



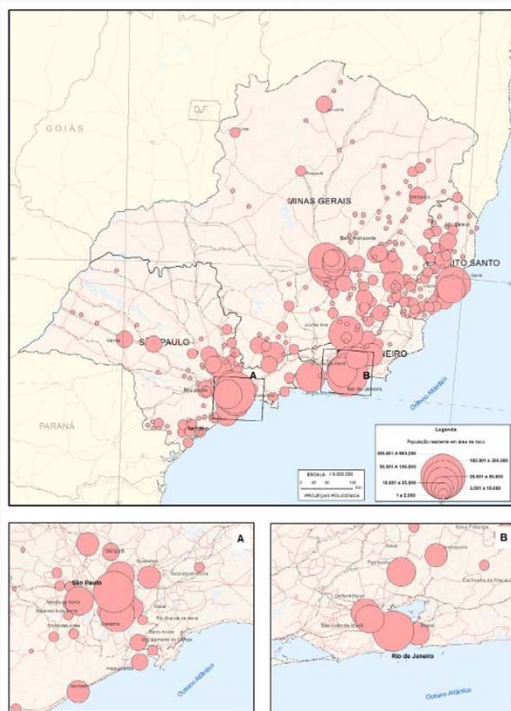
- 872 municipalities
- 27.660 risk areas
- 4.272 census sectors (urban area)
- 193.377 block-faces
- 8.309 polygons BATER

Creation of the Territorial Base Statistics of Risk Areas:
association of the features of risk areas with the
census sector

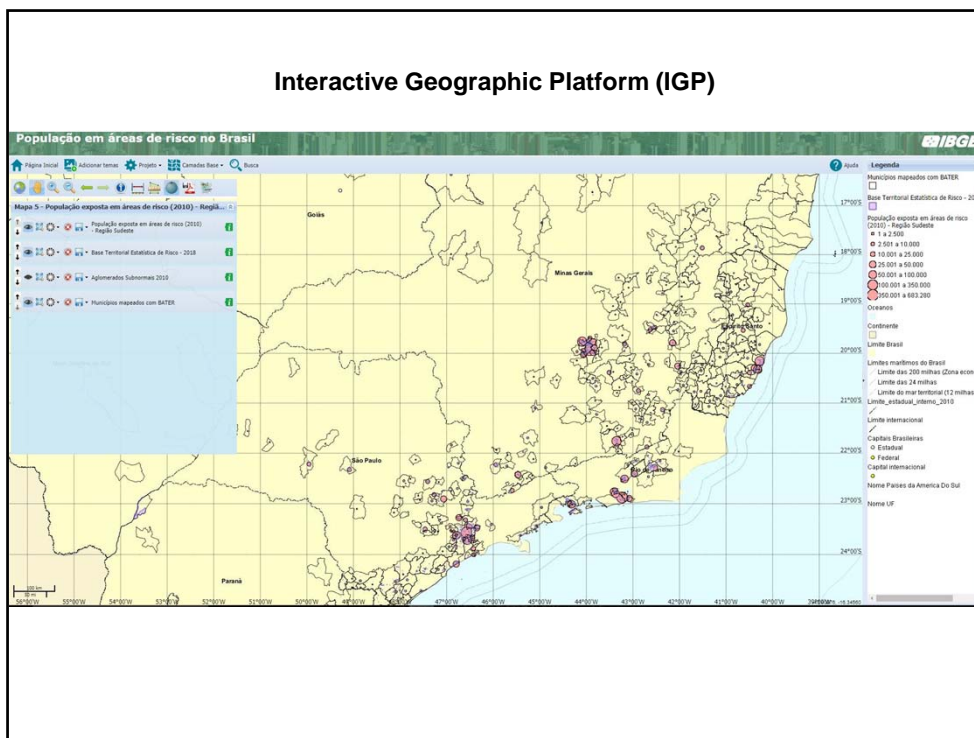


Source: IBGE

Population in Risk Areas –
Southeast Region



Interactive Geographic Platform (IGP)



Potentialities of using the database

- Prevention actions that can be directed to the profiles of the resident population in risk areas.
- Integrate a national database on the exposed population and subsidize intersectoral actions, such as health, education, housing, etc.
- Information on the areas of special attention, considering the concentration of vulnerable groups (children, elderly), as well as actions response, prioritizing the removal of these groups of people in the event of a disaster, in addition to identifying the areas with the highest concentration of exposed people.
- Contingency plans can also be more efficient if they include information on the age profiles of the population.

Lessons Learnt and Recommendations

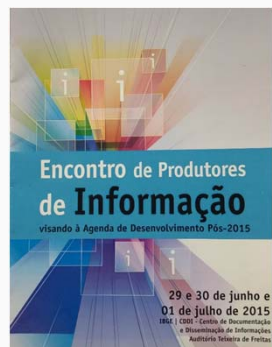
- The differences in the geometry of the census sectors in relation to risk areas led to a process of spatial generalizing to produce the new territorial entity (BATER). The accuracy of information should be considered especially in studies and work on a local scale.
- The demographic information is for 2010. Thus, there may have been some changes in population due to the households or densification of the occupation. The updating of information at smaller intervals is desirable given the dynamics of risk areas.
- The impacts of a natural disaster may exceed the limits of the polygons of risk areas. The delimitation of the BATER, often, includes the immediate surroundings of these areas, contemplating, in these cases, populations that may suffer indirect impacts from a disaster.
- The use of different risk area delimitation patterns, as mappings from various sources were used. The results obtained using this methodology are related to the quality of risk mappings, in particular as to the accuracy on the delimitation of risk areas.

The role of IBGE to produce Sustainable Development Goals indicators

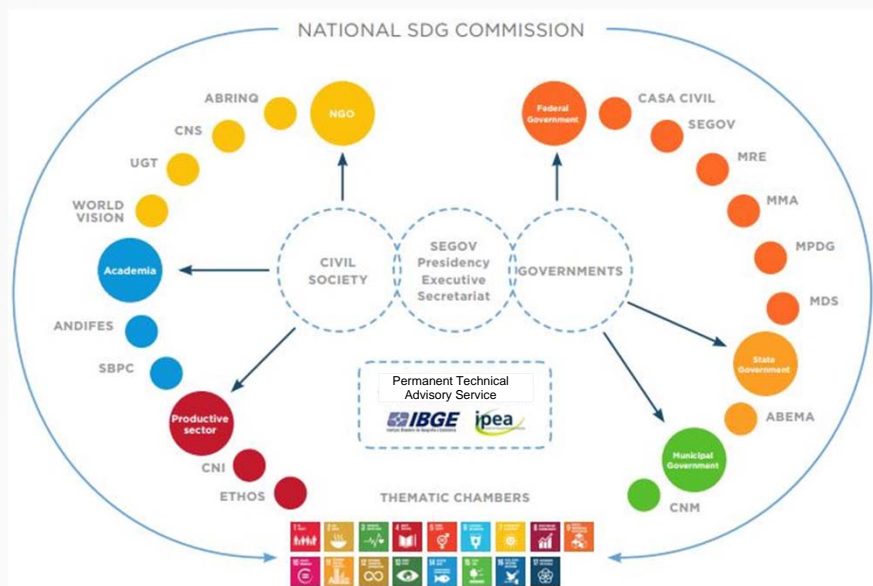


Background

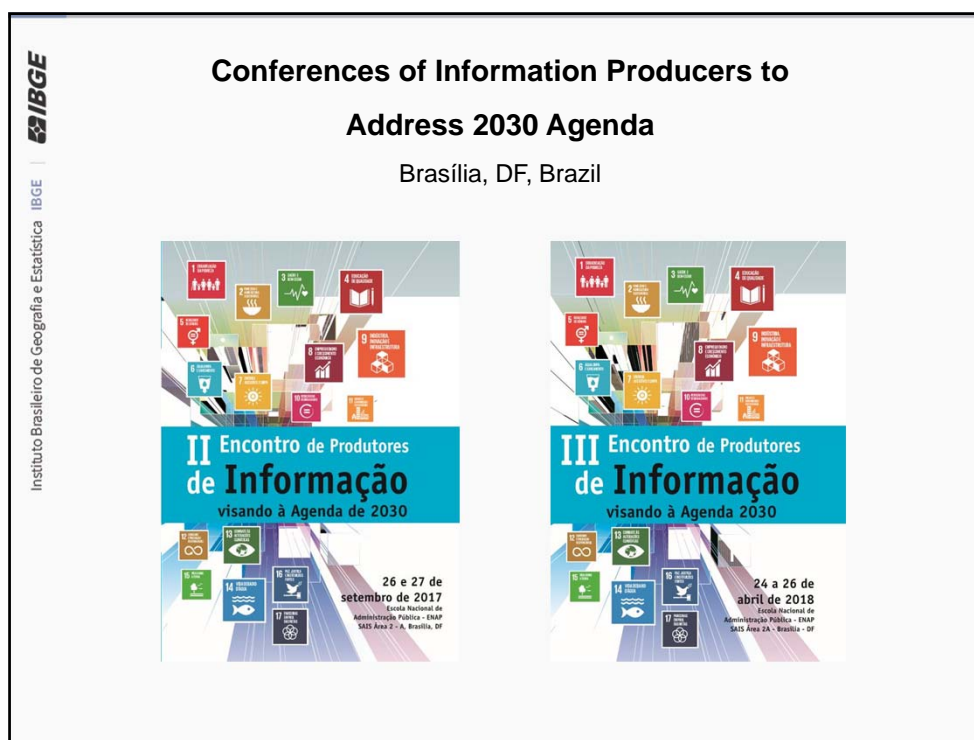
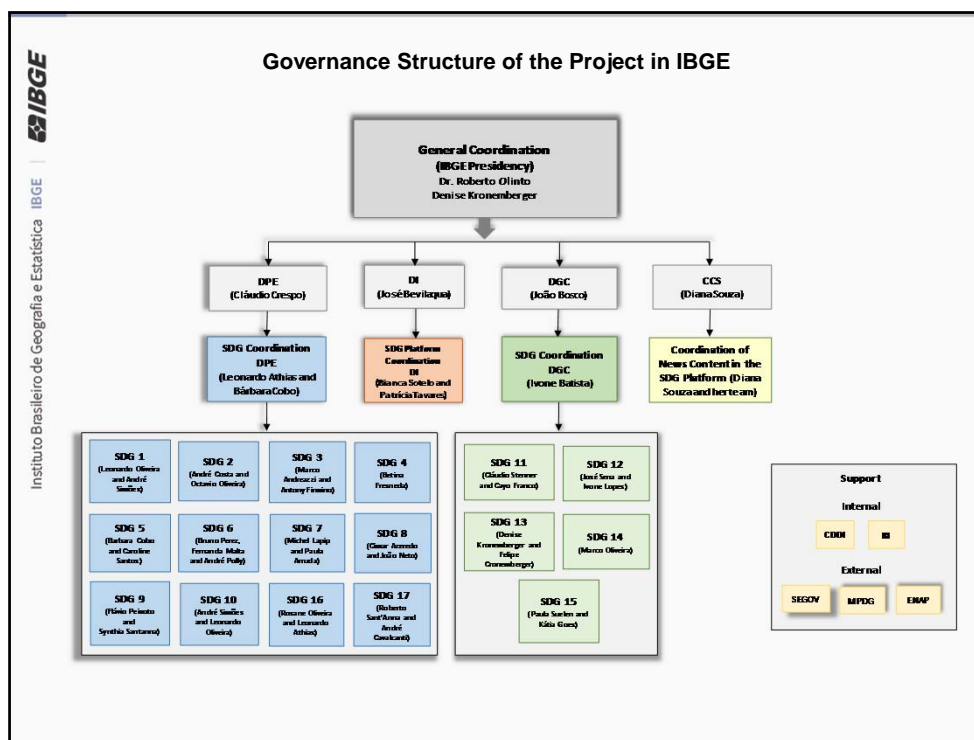
- IBGE: IAEG-SDGs member since 2015.
- June/July, 2015: IBGE “Conference of Information Producers to Address 2030 Agenda” - discussion of global indicators.
 - Electronic questionnaire
 - Creation of 17 working groups
 - Sharepoint

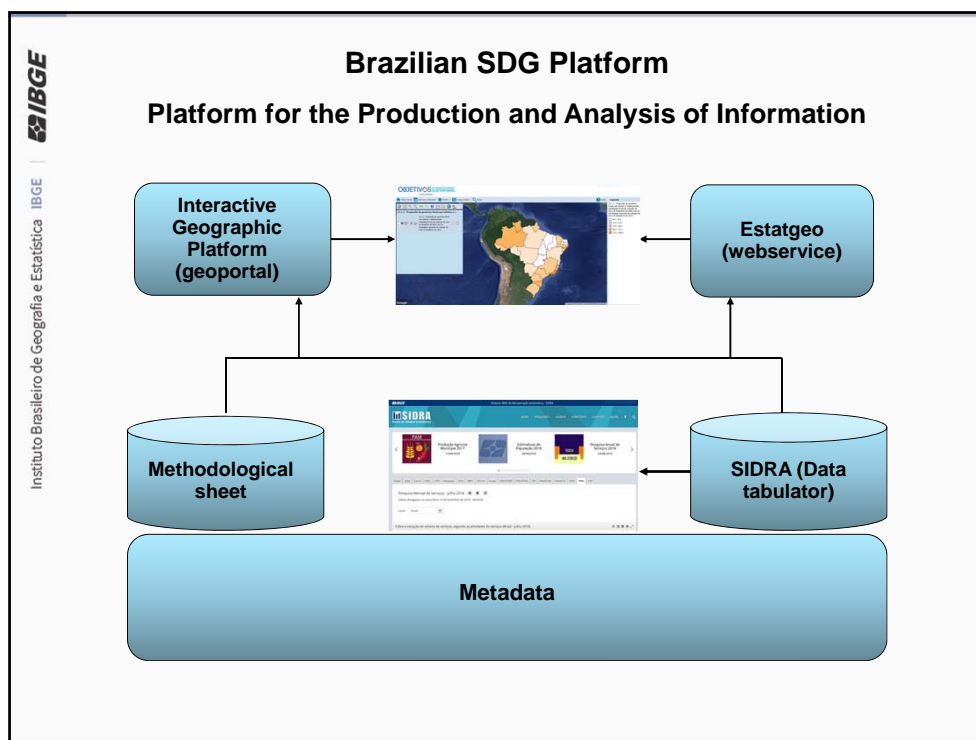


National Commission for the Sustainable Development Goals



Decree No. 8,892, of October 27th, 2016.





Brazilian SDG Platform
Platform for Dissemination and Information Sharing

- Global SDG Indicators
- SDG News
- SDG Network

The screenshot shows the 'Indicadores' (Indicators) section of the Brazilian SDG Platform website. The header includes the 'OBJETIVOS DE DESENVOLVIMENTO SUSTENTÁVEL' logo and the IBGE logo. Below the header, there is a list of 17 indicators, each represented by a colored square with an icon and a number. The indicators are: 1. Eradicação da pobreza, 2. Fome zero e segurança alimentar, 3. Saúde bem-estar, 4. Educação de qualidade, 5. Igualdade de gênero, 6. Água potável e saneamento, 7. Energia limpa, 8. Trabalho decente e crescimento econômico, 9. Indústria, inovação e infraestrutura, 10. Redução das desigualdades, 11. Cidades e comunidades sustentáveis, 12. Consumo responsável, 13. Ação contra a mudança global do clima, 14. Vida na água, 15. Vida terrestre, 16. Paz, justiça e instituições eficazes, 17. Parcerias e meios de implementação. The website URL 'www.ibge.gov.br' is displayed at the bottom.

IBGE
 Instituto Brasileiro de Geografia e Estatística




SDG Indicators about Extreme Events and Disasters


Produced

- Number of deaths, missing persons and directly affected persons attributed to disasters per 100,000 population
- Proportion of local governments that adopt and implement local disaster risk reduction strategies in line with national disaster risk reduction strategies

In construction

- Number of countries that adopt and implement national disaster risk reduction strategies in line with the Sendai Framework for Disaster Risk Reduction 2015–2030



IBGE – MIN – CEMADEN

IBGE Instituto Brasileiro de Geografia e Estatística	1	Goal X	Standardized Methodological Sheet for SDG Indicators
	2	Target X.X	
	3	Name of indicator	
	4	Concepts and definitions	
	5	Calculation formula	
	6	Unit of measurement	
	7	Variables, sources and institutions	
	8	Geographical scope	
	9	Disaggregation	
	10	Target population	
	11	Periodicity	
	12	Temporal series	
	13	Related Indicators	
	14	Access to indicator	
	15	Producer institution	
	16	Contact	
	17	References	

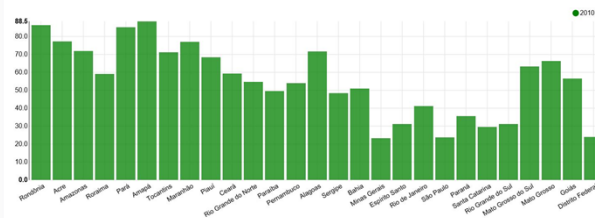
Indicador 13.1.3 - Proporção de governos locais que adotam e implementam estratégias locais de redução de risco de desastres em linha com as estratégias nacionais de redução de risco de desastres

Ficha Metodológica **Dados** Análise Geográfica

Indicador 13.1.3 - Proporção de governos locais que adotam e implementam estratégias locais de redução de risco de desastres em linha com as estratégias nacionais de redução de risco de desastres - Brasil - 2010-2015		
Ano	(%)	
2010		41,6
2011		42,2
2012		42,8
2013		43,2
2014		43,5
2015		44,6

Fonte: IBGE - Pesquisa de Informações Básicas Municipais - Munic

Indicador 11.1.1 - Proporção de população urbana vivendo em assentamentos precários, assentamentos informais ou domicílios inadequados



Instituto Brasileiro de Geografia e Estatística **IBGE**

OBJETIVOS DE DESENVOLVIMENTO SUSTENTÁVEL
Indicadores



Next Steps (2018-2019)

- ☐ Continue production of remaining SDG global indicators and update the ones already produced.
- ☐ Definition of National Indicators.
- ☐ Enable users to use the SDG Platform (capacity building).

Lessons Learnt and Recommendations

- Leadership of NSO
- Governance structure (NSO and National Commission for SDGs)
- Cooperation between NSO and other government data producers
- Infrastructure (SDGs Platform)
- Integrate statistics and geospatial information



Instituto Brasileiro de Geografia e Estatística IBGE

Thanks for your attention!