

Distr.: General  
31 March 2016

English only

---

## **Economic Commission for Europe**

### **Conference of European Statisticians**

#### **Joint Eurostat/UNECE Work Session on Demographic Projections**

Geneva, 18-20 April 2016

Item 4 of the provisional agenda

#### **Assumptions on fertility**

### **Why is fertility falling in Norway? An analysis of parity transitions over the last decade**

**Note by Statistics Norway<sup>1</sup>**

This document presents tables and figures related to Working paper 11.

---

<sup>1</sup> Prepared by Astri Syse, Senior Researcher.

# Tables and Figures

# Why is fertility falling in Norway?

**Table 1. Descriptive statistics (births and risk time) for women included in analyses of first, second and third births by their characteristics**

	First births (N=908 182)				Second births (N=461 342)				Third births (N=468 189)			
	Births		Person-years		Births		Person-years		Births		Person-years	
	N	%	N	%	N	%	N	%	N	%	N	%
<b>Calendar year</b>												
2004	27617	9.0	565110	9.2	22091	8.9	187346	9.2	9380	9.5	245242	9.1
2005	27417	8.9	568217	9.3	22224	8.9	186753	9.1	9204	9.3	244743	9.1
2006	28451	9.3	571370	9.3	22857	9.2	187212	9.2	9093	9.2	245206	9.1
2007	28118	9.1	571456	9.3	22710	9.1	186791	9.1	9234	9.4	245411	9.1
2008	29607	9.6	569754	9.3	22744	9.1	187907	9.2	9278	9.4	245495	9.1
2009	29752	9.7	564873	9.2	23468	9.4	188974	9.2	9319	9.5	245800	9.2
2010	29412	9.6	558448	9.1	23130	9.3	188663	9.2	9099	9.2	245412	9.1
2011	27993	9.1	551170	9.0	22918	9.2	187185	9.2	8891	9.0	244449	9.1
2012	27283	8.9	545108	8.9	22876	9.2	184944	9.0	8642	8.8	243199	9.1
2013	26284	8.5	538295	8.8	22219	8.9	181667	8.9	8297	8.4	241331	9.0
2014	25559	8.3	530712	8.7	21892	8.8	177993	8.7	8133	8.3	238868	8.9
<b>Age</b>												
16-18	4512	1.5	1163410	19.0	98	0.0	6568	0.3	0	0.0	107	0.0
19-21	26242	8.5	1168778	19.1	3631	1.5	60663	3.0	230	0.2	5783	0.2
22-24	46658	15.2	1064364	17.4	17800	7.1	167694	8.2	2209	2.2	41616	1.5
25-27	64588	21.0	870020	14.2	37773	15.2	274507	13.4	8060	8.2	124465	4.6
28-30	68897	22.4	628604	10.2	56756	22.8	348182	17.0	16586	16.8	245380	9.1
31-33	50284	16.4	414733	6.8	61206	24.6	341577	16.7	24788	25.1	380381	14.2
34-35	27147	8.8	279369	4.6	42744	17.2	271964	13.3	25440	25.8	465777	17.3
36-39	13061	4.2	208880	3.4	20588	8.3	216786	10.6	15124	15.3	488200	18.2
40-42	4969	1.6	176072	2.9	7144	2.9	187286	9.2	5119	5.2	479596	17.9
43-45	1135	0.4	160283	2.6	1389	0.6	170208	8.3	1014	1.0	453851	16.9
<b>Year since last birth</b>												
0-2	N/A <sup>b</sup>	N/A	N/A	N/A	18534	7.4	602095	29.4	6884	7.0	488721	18.2
3 <sup>c</sup>	N/A	N/A	N/A	N/A	70330	28.2	280964	13.7	40164	40.7	448615	16.7
4 <sup>c</sup>	N/A	N/A	N/A	N/A	65256	26.2	208847	10.2	N/A	N/A	N/A	N/A
5-6	N/A	N/A	N/A	N/A	52780	21.2	249764	12.2	25327	25.7	364586	13.6
7+	N/A	N/A	N/A	N/A	42229	17.0	703765	34.4	26195	26.6	1383234	51.5
<b>Educational level</b>												
Higher higher education	58220	18.9	2092575	34.1	40195	16.1	443235	21.7	18641	18.9	495199	18.4
Lower higher education	80696	26.2	1582982	25.8	70849	28.4	652479	31.9	28696	29.1	1000661	37.3
High school	105024	34.2	1280623	20.9	93379	37.5	616467	30.1	35992	36.5	885107	33.0
Elementary school	38097	12.4	397423	6.5	30501	12.2	187758	9.2	10077	10.2	218281	8.1
Missing	25456	8.3	780910	12.7	14205	5.7	145496	7.1	5164	5.2	85908	3.2
<b>Educational level</b>												
Currently in education	48229	15.7	2229051	36.3	21970	8.8	223179	10.9	7430	7.5	207195	7.7
Not in education	259264	84.3	3905462	63.7	227159	91.2	1822256	89.1	91140	92.5	2477961	92.3
<b>Labor market attachment</b>												
In labor market	232633	75.7	2820829	46.0	203282	81.6	1547215	75.6	79798	81.0	2317632	86.3
Outside labor market	74860	24.3	3313684	54.0	45847	18.4	498220	24.4	18772	19.0	367524	13.7
<b>Immigrant background</b>												
Immigrant	85204	27.7	1748408	28.5	58592	23.5	555559	27.2	22468	22.8	460683	17.2
Norwegian-born	222289	72.3	4386105	71.5	190537	76.5	1489876	72.8	76102	77.2	2224473	82.8

<sup>a</sup>The women's birth year is not shown, but may be partly deduced from age and calendar year. <sup>b</sup>N/A refers to 'not applicable'. <sup>c</sup>In analyses of third births, 3-4 years since last birth is modeled jointly, while it is modeled in two groups for second births.

**Table 2. Absolute and relative change in predicted probabilities for transitions to parities one, two and three for 2004-2009, 2009-2014 and 2004-2014.**

	2004-2009		2009-2014		2004-2014	
	Abs. change <sup>a</sup>	Rel. change <sup>b</sup>	Abs. change	Rel. change	Abs. change	Rel. change
<b>First births</b>	0.30*	6.0	-0.51*	-9.6	-0.21*	-4.2
<b>Second births</b>	0.93*	7.9	-0.64*	-5.1	0.29*	2.5
<b>Third births</b>	0.12	3.2	-0.47*	-12.3	-0.35*	-9.5

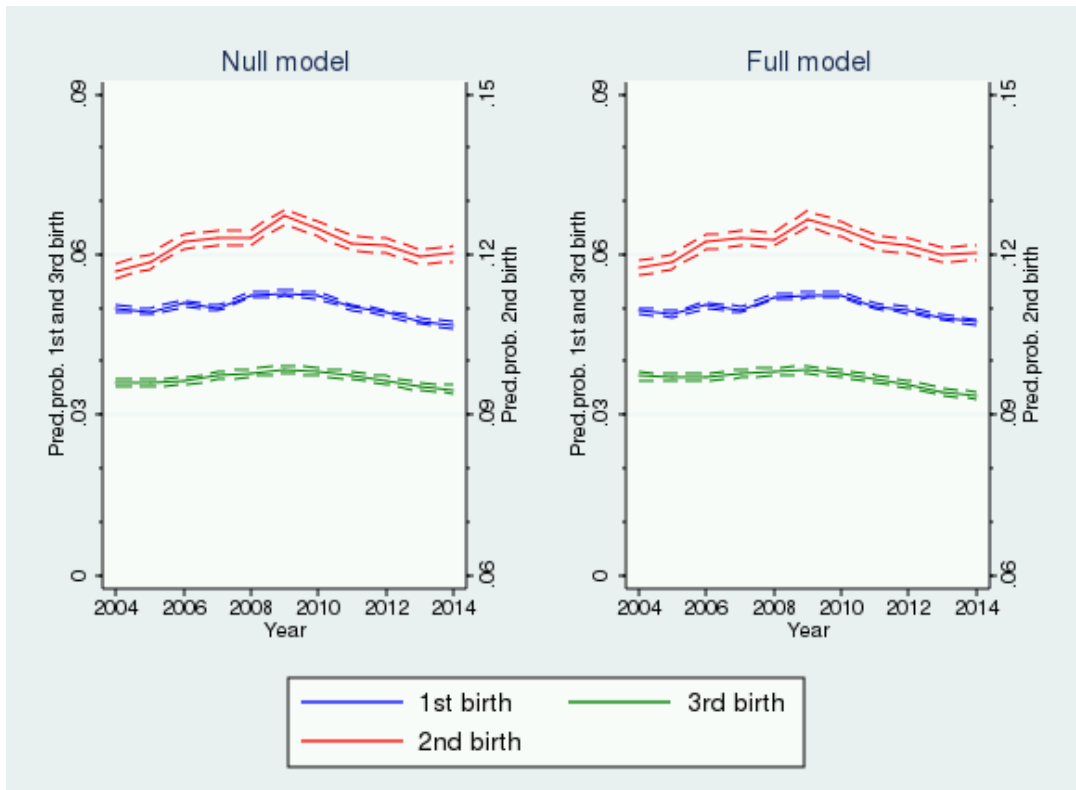
Note: The table presents absolute and relative change in predicted probabilities derived from fully adjusted models (depicted in Figures 2a and 2b, shown for selected years in Table A4). <sup>a</sup> Absolute change is predicted probability in last year minus predicted probability in base year, multiplied by 100 to give percentage points. <sup>b</sup> Relative change in percent is absolute change divided by predicted probability in base year. \* denotes statistical significance at the 5% level, i.e. non-overlap between the 95% confidence intervals of the compared years.

**Table 3. Absolute and relative change in predicted probabilities for transitions to parities one, two and three for various groups of women for 2004-2009, 2009-2014 and 2004-2014.**

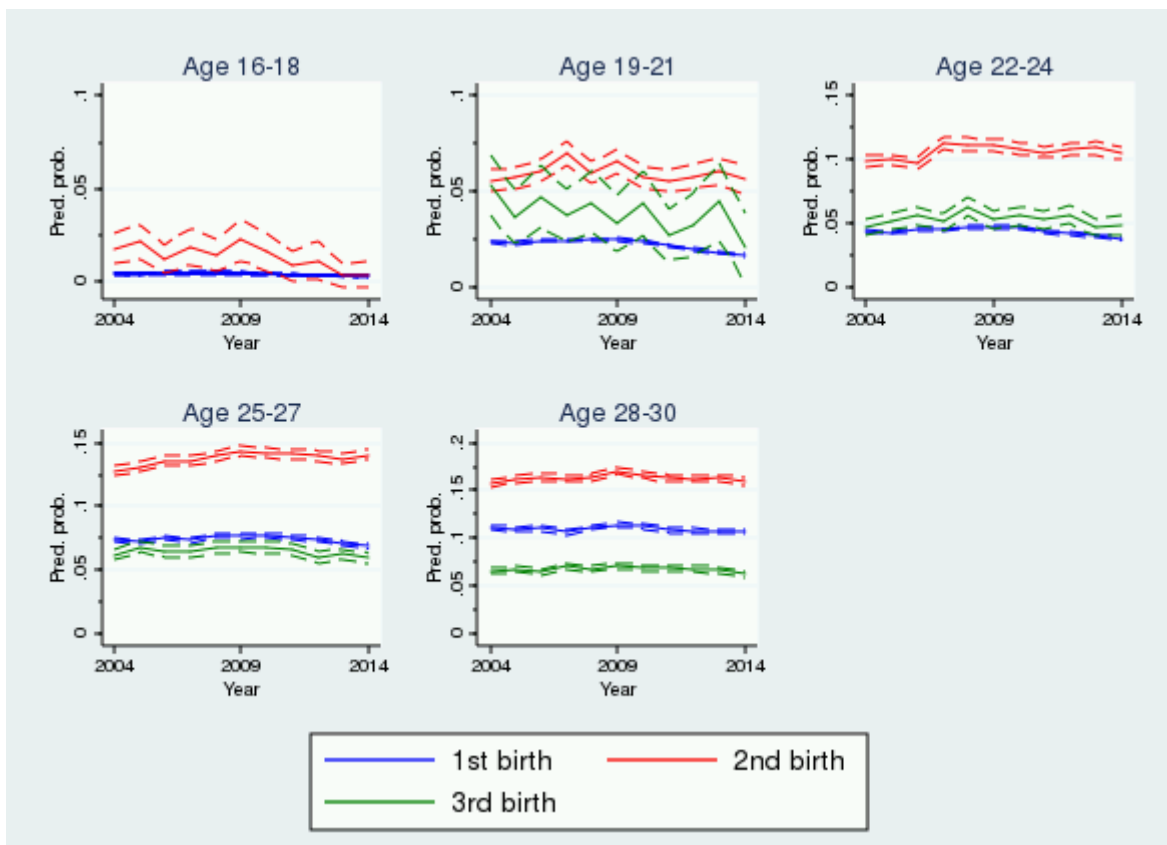
	From 2004-2009		From 2009 to 2014		From 2004-2014	
	Abs. change <sup>a</sup>	Rel. change <sup>b</sup>	Abs. change	Rel. change	Abs. change	Rel. change
<b>First births</b>						
Basic schooling	0.31*	11.1	-0.79*	-25.9	-0.48*	-17.7
High school	0.07	1.4	-0.94*	-17.5	-0.87*	-16.4
Some college ed.	0.35*	4.2	-0.87*	-10.2	-0.52*	-6.4
Higher college ed.	0.97*	10.8	-0.42	-4.2	0.55	6.1
Enrolled in ed.	0.12	5.4	-0.65*	-27.1	-0.53*	-23.2
Not enrolled in ed.	0.43*	6.7	-0.39*	-5.6	0.04	0.7
In labor market	0.08	0.9	-1.29*	-14.9	-1.21*	-14.2
Not in labor market	0.21*	10.0	-0.06	-2.4	0.15*	7.3
Immigrant	0.77*	18.4	0.97*	19.8	1.74*	41.9
Norwegian-born	0.07	1.4	-1.02*	-18.9	-0.95*	-17.8
<b>Second births</b>						
Basic schooling	0.50	5.6	-0.34	-3.7	0.16	1.8
High school	0.95*	9.1	-0.67*	-5.9	0.28	2.6
Some college ed.	1.20*	8.2	-1.05*	-6.6	0.15	1.0
Higher college ed.	1.23*	7.9	-0.43	-2.6	0.80	5.1
Enrolled in ed.	1.53*	16.9	-0.92*	-8.7	0.61	6.7
Not enrolled in ed.	0.87*	7.2	-0.60*	-4.7	0.27	2.2
In labor market	0.86*	6.7	-0.39*	-2.9	0.47*	3.7
Not in labor market	0.39	4.3	-0.05	-0.5	0.34	3.8
Immigrant	0.41	3.9	0.11	1.0	0.52	5.0
Norwegian-born	1.12*	9.2	-0.91*	-6.8	0.21	1.8
<b>Third births</b>						
Basic schooling	0.10	2.7	-0.01	-0.1	0.09	2.5
High school	0.14	4.7	-0.38*	-12.5	-0.24*	-8.4
Some college ed.	-0.01	-0.2	-0.66*	-15.6	-0.67*	-15.7
Higher college ed.	0.33	6.8	-0.72*	-14.1	-0.39	-8.3
Enrolled in ed.	0.10	2.7	-0.48	-12.7	-0.38	-10.3
Not enrolled in ed.	0.12	3.3	-0.47*	-12.2	-0.35*	-9.3
In labor market	0.19*	5.5	-0.42*	-11.5	-0.23*	-6.6
Not in labor market	-0.42	-7.6	-0.19	-3.7	-0.61*	-11.0
Immigrant	-0.29	-5.6	-0.38	-7.7	-0.67*	-12.8
Norwegian-born	0.17*	5.0	-0.50*	-13.8	-0.33*	-9.6

Note: The table presents absolute and relative change in predicted probabilities derived from fully adjusted models (depicted in Figures 2a and 2b, shown for selected years in Table A4). <sup>a</sup> Absolute change is predicted probability in last year minus predicted probability in base year, multiplied by 100 to give percentage points. <sup>b</sup> Relative change in percent is absolute change divided by predicted probability in base year. \* denotes statistical significance at the 5% level, i.e. non-overlap between the 95% confidence intervals of the compared years.

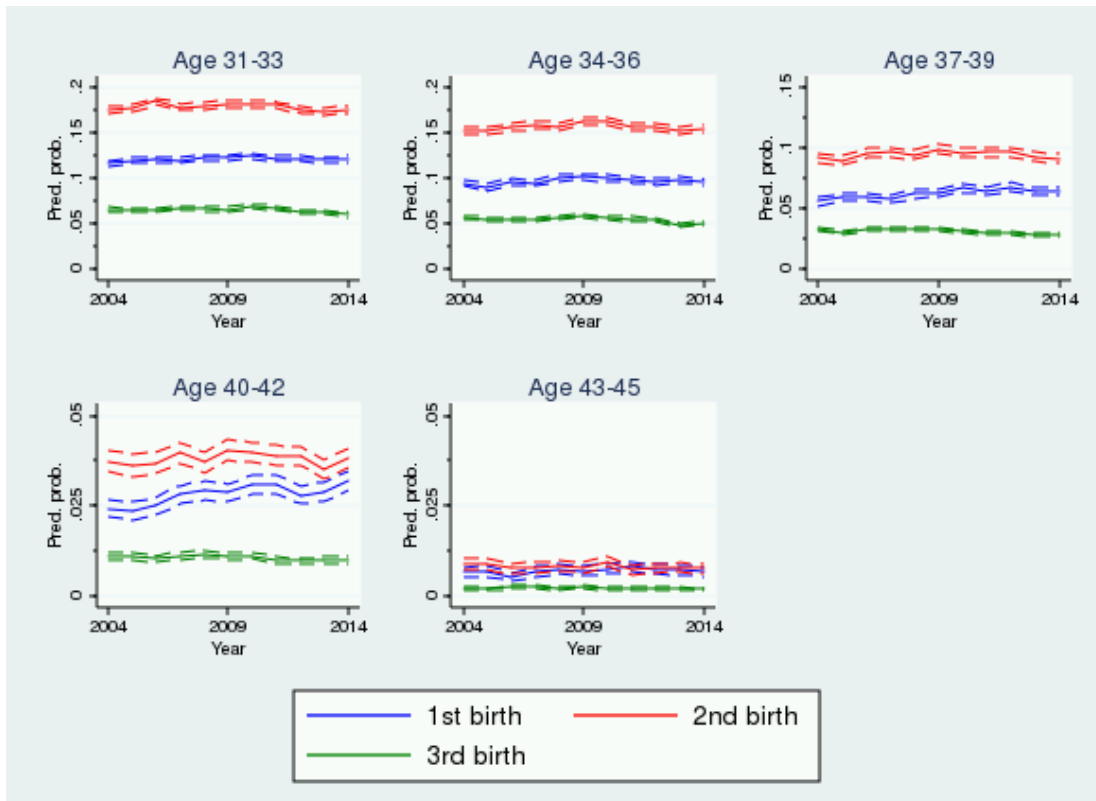
**Figure 1. Full and basic (null) models with 95% confidence intervals for first, second and third birth probabilities, 2004-2014.**



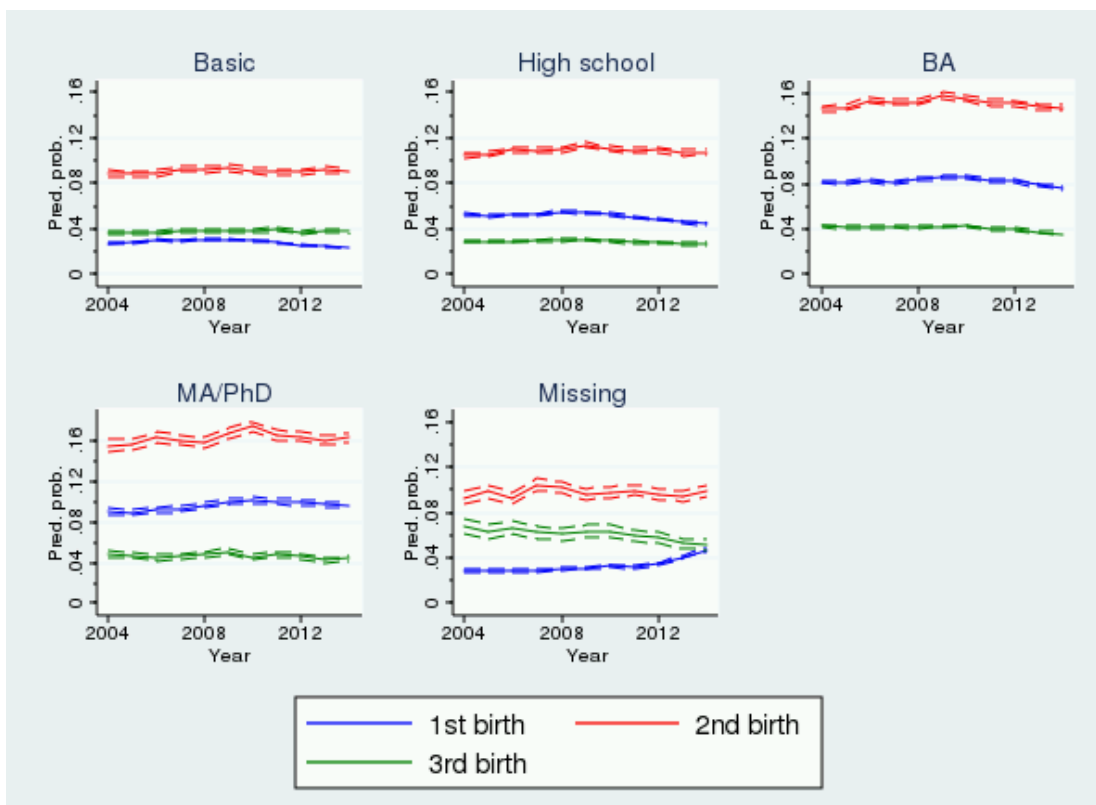
**Figure 2a. Fully adjusted first, second and third birth probabilities with 95% confidence intervals by age (16-30 years), 2004-2014.**



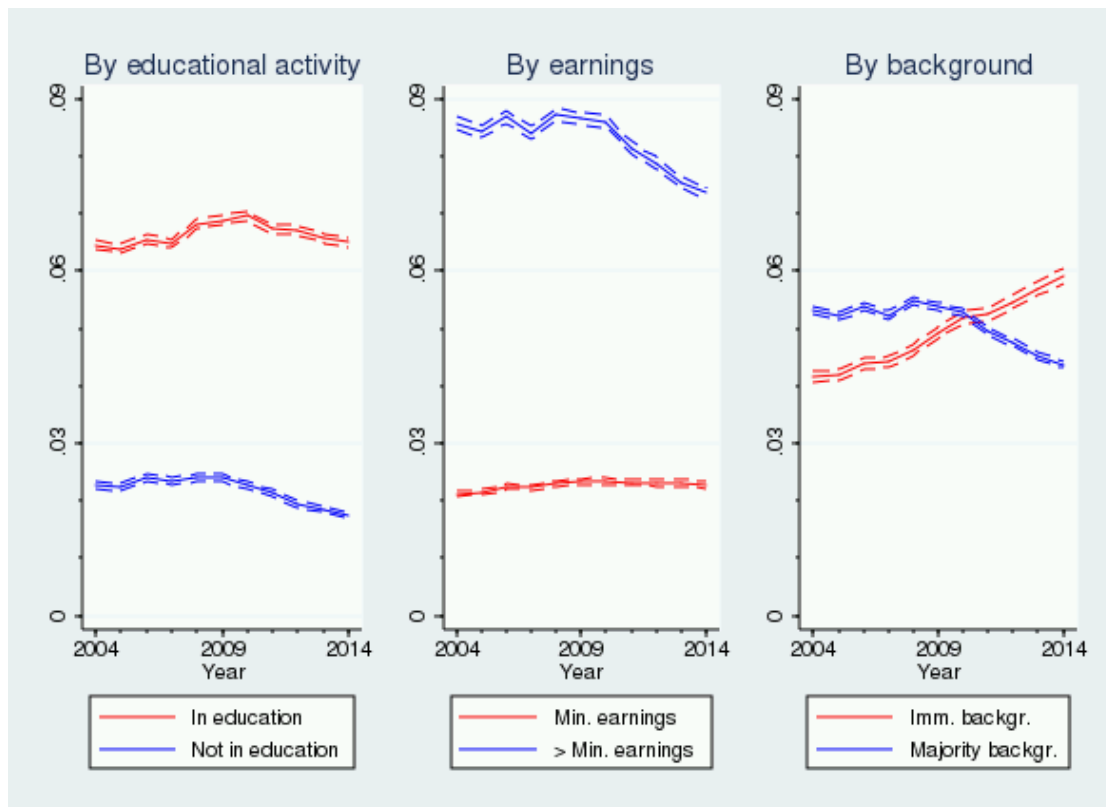
**Figure 2b. Fully adjusted first, second and third birth probabilities with 95% confidence intervals by age (31-45 years), 2004-2014.**



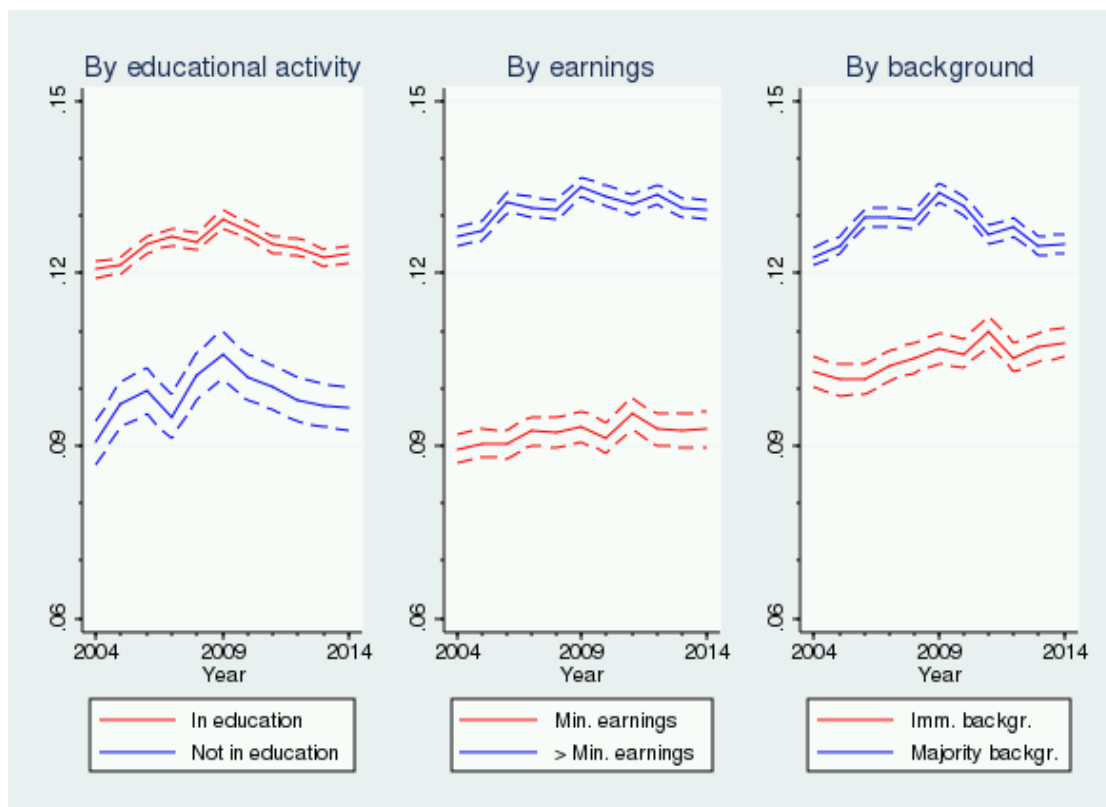
**Figure 3. Fully adjusted first, second and third birth probabilities with 95% confidence intervals by detailed educational level, 2004-2014.**



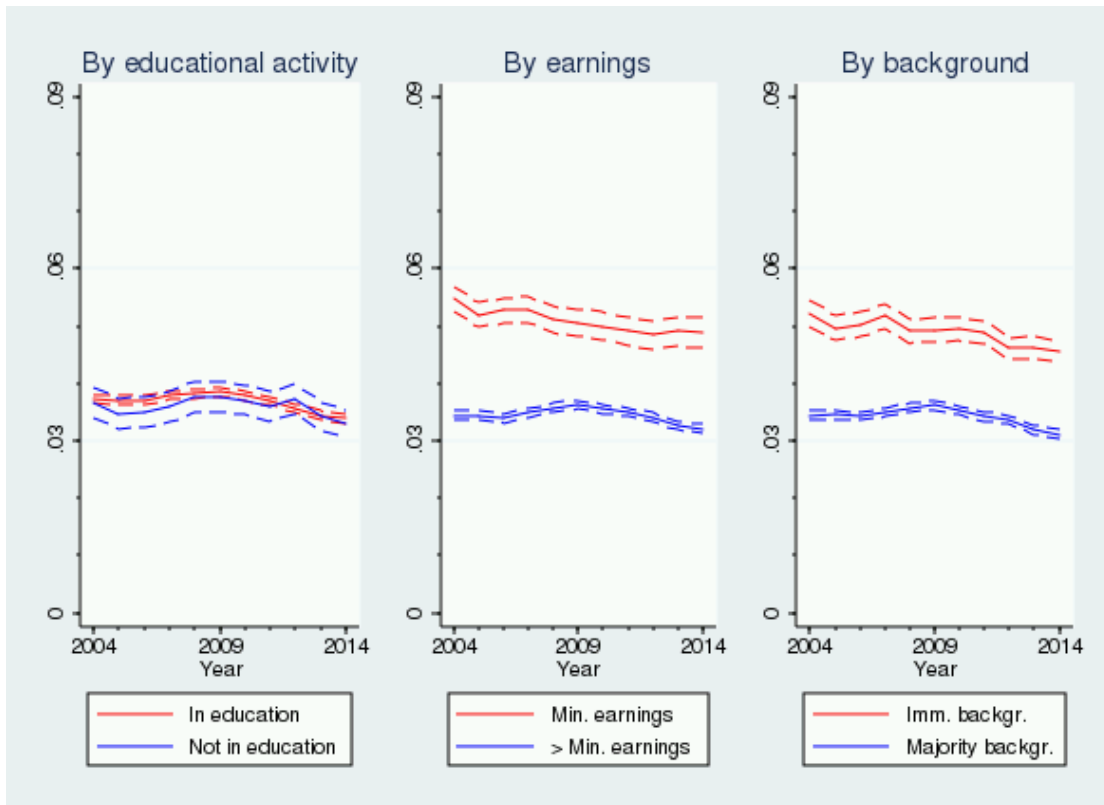
**Figure 4. Fully adjusted first birth probabilities with 95% confidence intervals by educational level, educational enrollment, labor market attachment and immigrant background, 2004-2014.**



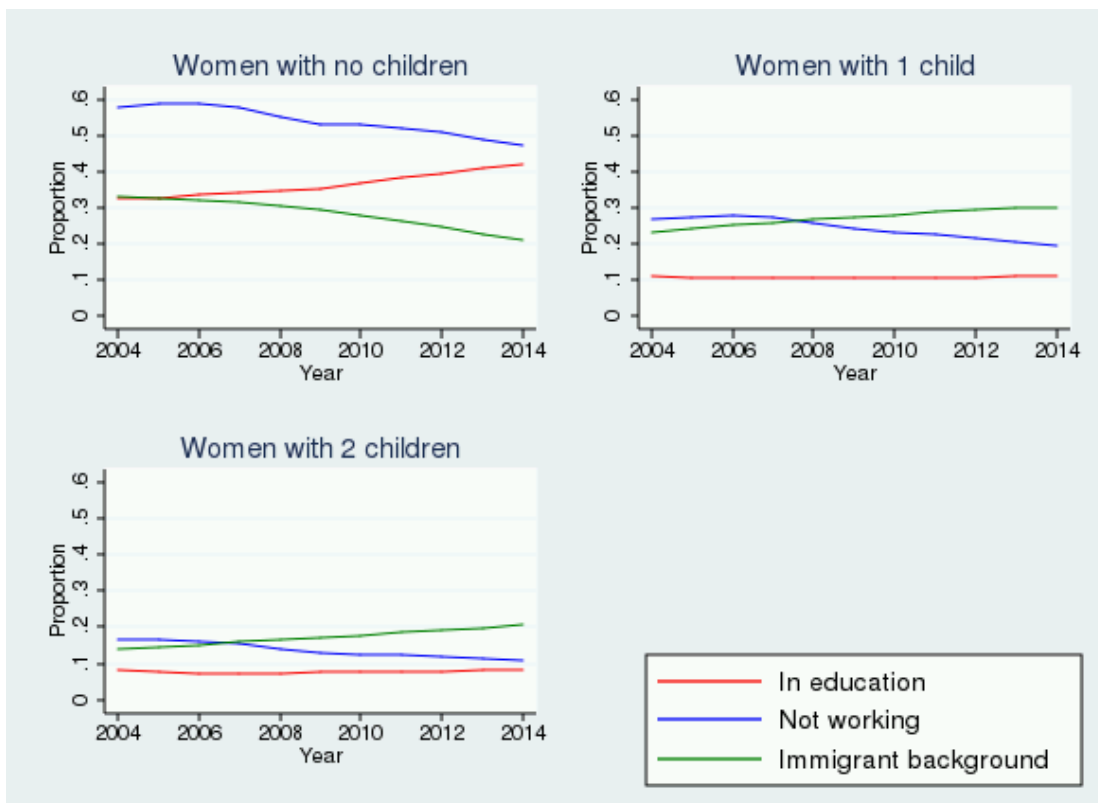
**Figure 5. Fully adjusted second birth probabilities with 95% confidence intervals by educational level, educational enrollment, labor market attachment and immigrant background, 2004-2014.**



**Figure 6. Fully adjusted third birth probabilities with 95% confidence intervals by educational level, educational enrollment, labor market attachment and immigrant background, 2004-2014.**



**Figure 7. Proportion of women enrolled in education, outside the labor market and with an immigrant background, by parity, 2004-2014.**





## Appendix

**Table A1. Overall predicted probabilities for 2004, 2009 and 2014 for transitions to parities one, two and three.**

	2004		2009		2014	
	PP <sup>a</sup>	95% CI <sup>b</sup>	PP	95% CI	PP	95% CI
<b>First births</b>	0.0495	0.0489-0.0500	0.0525	0.0519-0.0530	0.0474	0.0468-0.0480
<b>Second births</b>	0.1174	0.1161-0.1188	0.1268	0.1253-0.1282	0.1203	0.1189-0.1217
<b>Third births</b>	0.0372	0.0365-0.0380	0.0384	0.0377-0.0392	0.0337	0.0330-0.0344

Note: This table presents predicted probabilities and confidence intervals from three fully adjusted models (depicted in Figure 1). These estimates form the basis for the calculations shown in Table 2. All variables stated in the methods section have been included. <sup>a</sup>PP refers to predicted probabilities. <sup>b</sup>CI refers to confidence interval. When the intervals do not overlap between 2004, 2009 and 2014, there has been a statistical significant change over the period in question, as indicated in Table 2.

**Table A2. Absolute and relative change in predicted probabilities for transitions to parities one, two and three by age for 2004-2009, 2009-2014 and 2004-2014.**

	2004 to 2009		2009 to 2014		2004 to 2014	
	Abs. change <sup>a</sup>	Rel. change <sup>b</sup>	Abs. change	Rel. change	Abs. change	Rel. change
<b>First births</b>						
Age 16-18	0.06	15.3	-0.17*	-38.1	-0.11*	-28.6
Age 19-21	0.12	5.3	-0.80*	-32.2	-0.68*	-28.6
Age 22-24	0.29*	6.6	-0.89*	-18.9	-0.60*	-13.6
Age 25-27	0.27	3.6	-0.78*	-10.2	-0.51*	-6.9
Age 28-30	0.32	2.9	-0.71*	-6.2	-0.39	-3.5
Age 31-33	0.62	5.3	-0.15	-1.2	0.47	4.0
Age 34-36	0.66	7.0	-0.60	-5.9	0.06	0.7
Age 37- 39	0.74*	13.2	0.13	2.0	0.87*	15.4
Age 40-42	0.43	17.7	0.32	11.1	0.75*	30.8
Age 43-45	0.04	5.4	-0.05	-6.7	-0.01	-1.7
<b>Second births</b>						
Age 16-18	0.47	27.1	-1.86*	-83.8	-1.39	-79.4
Age 19-21	0.99	17.6	-0.98	-14.9	0.01	0.1
Age 22-24	1.31*	13.3	-0.68	-6.1	0.63	6.4
Age 25-27	1.58*	12.3	-0.29	-2.0	1.29*	10.0
Age 28-30	1.34*	8.5	-1.11*	-6.5	0.23	1.4
Age 31-33	0.71	4.0	-0.66	-3.6	0.05	0.3
Age 34-36	1.04*	6.8	-0.91*	-5.6	0.13	0.8
Age 37- 39	0.76	8.2	-0.77*	-7.7	-0.01	-0.1
Age 40-42	0.30	8.0	-0.21	-5.2	0.09	2.4
Age 43-45	-0.11	-12.2	-0.02	-2.5	-0.13	-14.4
<b>Third births</b>						
Age 19-21	-1.99	-37.5	-1.21	-36.5	-3.20	-60.3
Age 22-24	0.64	13.6	-0.42	-8.0	0.22	4.5
Age 25-27	0.66	10.6	-0.93*	-13.6	-0.28*	-4.5
Age 28-30	0.52	7.9	-0.86*	-12.1	-0.34*	-5.1
Age 31-33	0.02	0.3	-0.60*	-9.1	-0.58*	-8.8
Age 34-36	0.17	3.1	-0.79*	-13.4	-0.62*	-10.8
Age 37- 39	0.05	1.4	-0.51*	-15.3	-0.46*	-14.1
Age 40-42	-0.01	-1.2	-0.10	-9.1	-0.11	-10.2
Age 43-45	0.04	18.5	-0.07	-25.4	-0.03	-11.6

Note: The table presents absolute and relative change in predicted probabilities derived from fully adjusted models (depicted in Figures 2a and 2b, shown for selected years in Table A3). <sup>a</sup> Absolute change is predicted probability in last year minus predicted probability in base year, multiplied by 100 to give percentage points. <sup>b</sup> Relative change in percent is absolute change divided by predicted probability in base year. \* denotes statistical significance at the 5% level, i.e. non-overlap between the 95% confidence intervals of the compared years.

**Table A3. Overall predicted probabilities by age for 2004, 2009 and 2014 for transitions to parities one, two and three.<sup>a</sup>**

	2004		2009		2014	
	PP <sup>a</sup>	95% CI <sup>b</sup>	PP	95% CI	PP	95% CI
<b>First births</b>						
Age 16-18	0.0039	0.0035-0.0042	0.0045	0.0041-0.0049	0.0028	0.0024-0.0031
Age 19-21	0.0236	0.0227-0.0245	0.0248	0.0239-0.0257	0.0168	0.0160-0.0177
Age 22-24	0.0441	0.0428-0.0453	0.0470	0.0456-0.0482	0.0381	0.0368-0.0393
Age 25-27	0.0738	0.0720-0.0756	0.0765	0.0746-0.0783	0.0687	0.0669-0.0704
Age 28-30	0.1111	0.1085-0.1137	0.1143	0.1117-0.1169	0.1072	0.1047-0.1097
Age 31-33	0.1167	0.1135-0.1199	0.1229	0.1196-0.1263	0.1214	0.1181-0.1247
Age 34-36	0.0949	0.0913-0.0986	0.1016	0.0979-0.1053	0.0956	0.0920-0.0992
Age 37- 39	0.0559	0.0526-0.0593	0.0633	0.0599-0.0667	0.0646	0.0610-0.0681
Age 40-42	0.0243	0.0218-0.0268	0.0286	0.0261-0.0312	0.0318	0.0291-0.0345
Age 43-45	0.0067	0.0053-0.0081	0.0071	0.0058-0.0085	0.0066	0.0054-0.0079
<b>Second births</b>						
Age 16-18	0.0174	0.0093-0.0255	0.0221	0.0111-0.0332	0.0036	-0.0034-0.0106
Age 19-21	0.0560	0.0506-0.0613	0.0658	0.0598-0.0718	0.0560	0.0487-0.0634
Age 22-24	0.0987	0.0944-0.1030	0.1118	0.1070-0.1167	0.1050	0.0999-0.1101
Age 25-27	0.1279	0.1240-0.1318	0.1437	0.1395-0.1478	0.1407	0.1365-0.1449
Age 28-30	0.1574	0.1538-0.1611	0.1708	0.1669-0.1746	0.1596	0.1558-0.1635
Age 31-33	0.1757	0.1719-0.1796	0.1828	0.1787-0.1869	0.1762	0.1722-0.1802
Age 34-36	0.1534	0.1491-0.1577	0.1638	0.1595-0.1681	0.1547	0.1504-0.1589
Age 37- 39	0.0920	0.0878-0.0961	0.0996	0.0956-0.1035	0.0919	0.0880-0.0957
Age 40-42	0.0375	0.0344-0.0406	0.0405	0.0377-0.0433	0.0384	0.0357-0.0410
Age 43-45	0.0090	0.0074-0.0107	0.0079	0.0066-0.0093	0.0077	0.0065-0.0090
<b>Third births</b>						
Age 19-21	0.0531	0.0374-0.0687	0.0332	0.0184-0.0479	0.0211	0.0034-0.0387
Age 22-24	0.0468	0.0408-0.0528	0.0531	0.0462-0.0601	0.0489	0.0416-0.0562
Age 25-27	0.0619	0.0577-0.0661	0.0685	0.0639-0.0731	0.0591	0.0548-0.0635
Age 28-30	0.0660	0.0630-0.0691	0.0713	0.0679-0.0746	0.0626	0.0595-0.0658
Age 31-33	0.0657	0.0633-0.0681	0.0659	0.0633-0.0686	0.0599	0.0574-0.0624
Age 34-36	0.0563	0.0542-0.0585	0.0581	0.0559-0.0602	0.0503	0.0482-0.0524
Age 37- 39	0.0328	0.0311-0.0346	0.0333	0.0316-0.0349	0.0282	0.0266-0.0297
Age 40-42	0.0112	0.0101-0.0123	0.0110	0.0101-0.0120	0.0100	0.0092-0.0109
Age 43-45	0.0022	0.0017-0.0027	0.0026	0.0021-0.0031	0.0019	0.0016-0.0023

Note: This table presents predicted probabilities and confidence intervals from three fully adjusted models (depicted in Figures 2a and 2b). These estimates form the basis for the calculations shown in Table A2. All variables stated in the methods section have been included. <sup>a</sup>PP refers to predicted probabilities. <sup>b</sup>CI refers to confidence interval. When the intervals do not overlap between 2004, 2009 and 2014, there has been a statistical significant change over the period in question, as indicated in Table A2.

**Table A4. Overall predicted probabilities for 2004, 2009 and 2014 for transitions to parities one, two and three by educational level, educational enrollment, labor market attachment and immigrant background.**

	2004		2009		2014	
	PP <sup>a</sup>	95% CI <sup>b</sup>	PP	95% CI	PP	95% CI
<b>First births</b>						
Basic schooling	0.0274	0.0267-0.0281	0.0305	0.0297-0.0312	0.0226	0.0219-0.0232
High school	0.0529	0.0519-0.0540	0.0537	0.0525-0.0548	0.0443	0.0432-0.0454
Some college ed.	0.0819	0.0803-0.0834	0.0853	0.0838-0.0869	0.0766	0.0751-0.0781
Higher college ed.	0.0899	0.0866-0.0931	0.0996	0.0966-0.1026	0.0954	0.0926-0.0982
Enrolled in ed.	0.0227	0.0220-0.0233	0.0239	0.0232-0.0246	0.0174	0.0169-0.0180
Not enrolled in ed.	0.0645	0.0637-0.0653	0.0688	0.0680-0.0696	0.0650	0.0641-0.0658
In labor market	0.0857	0.0846-0.0868	0.0864	0.0854-0.0875	0.0735	0.0726-0.0745
Not in labor market	0.0212	0.0207-0.0217	0.0233	0.0228-0.0238	0.0227	0.0221-0.0234
Immigrant	0.0416	0.0407-0.0426	0.0493	0.0483-0.0503	0.0590	0.0577-0.0603
Norwegian-born	0.0531	0.0524-0.0538	0.0539	0.0532-0.0545	0.0437	0.0431-0.0443
<b>Second births</b>						
Basic schooling	0.0888	0.0862-0.0914	0.0938	0.0911-0.0966	0.0904	0.0876-0.0932
High school	0.1047	0.1025-0.1068	0.1141	0.1117-0.1166	0.1074	0.1048-0.1100
Some college ed.	0.1463	0.1435-0.1490	0.1583	0.1556-0.1610	0.1478	0.1451-0.1504
Higher college ed.	0.1547	0.1490-0.1604	0.1670	0.1620-0.1719	0.1626	0.1582-0.1670
Enrolled in ed.	0.0905	0.0867-0.0942	0.1058	0.1016-0.1099	0.0965	0.0928-0.1003
Not enrolled in ed.	0.1207	0.1192-0.1221	0.1294	0.1279-0.1309	0.1233	0.1218-0.1248
In labor market	0.1264	0.1247-0.1281	0.1350	0.1332-0.1367	0.1311	0.1294-0.1328
Not in labor market	0.0895	0.0870-0.0919	0.0933	0.0907-0.0960	0.0929	0.0898-0.0960
Immigrant	0.1029	0.1002-0.1056	0.1070	0.1044-0.1095	0.1080	0.1055-0.1106
Norwegian-born	0.1229	0.1213-0.1245	0.1341	0.1325-0.1358	0.1251	0.1234-0.1267
<b>Third births</b>						
Basic schooling	0.0365	0.0349-0.0380	0.0374	0.0357-0.0392	0.0374	0.0356-0.0392
High school	0.0290	0.0280-0.0300	0.0303	0.0292-0.0314	0.0265	0.0254-0.0277
Some college ed.	0.0425	0.0410-0.0439	0.0424	0.0410-0.0437	0.0358	0.0345-0.0370
Higher college ed.	0.0477	0.0443-0.0512	0.0510	0.0480-0.0540	0.0438	0.0414-0.0462
Enrolled in ed.	0.0366	0.0340-0.0393	0.0376	0.0349-0.0404	0.0329	0.0305-0.0352
Not enrolled in ed.	0.0373	0.0365-0.0380	0.0385	0.0377-0.0393	0.0338	0.0331-0.0345
In labor market	0.0344	0.0336-0.0351	0.0363	0.0355-0.0370	0.0321	0.0314-0.0328
Not in labor market	0.0548	0.0526-0.0570	0.0506	0.0482-0.0529	0.0487	0.0461-0.0513
Immigrant	0.0522	0.0500-0.0545	0.0493	0.0473-0.0513	0.0455	0.0437-0.0474
Norwegian-born	0.0344	0.0337-0.0352	0.0361	0.0353-0.0369	0.0311	0.0304-0.0319

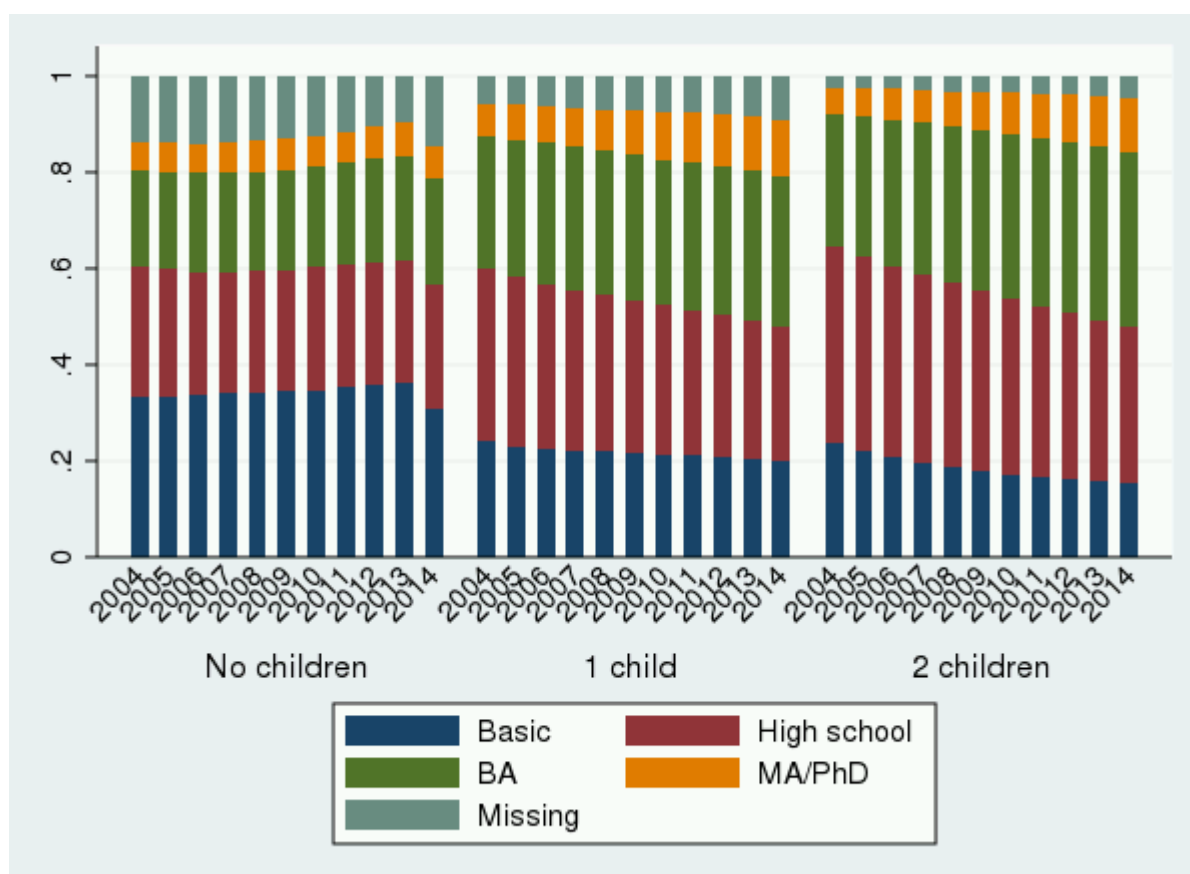
Note: This table presents predicted probabilities and confidence intervals from multiple fully adjusted models (depicted in Figures 3a-3c and Figure A1). These estimates form the basis for the calculations shown in Table 3. All variables stated in the methods section have been included. The estimates from the group with missing education are not shown, but are available upon request. <sup>a</sup>PP refers to predicted probabilities. <sup>b</sup>CI refers to confidence interval. When the intervals do not overlap between 2004, 2009 and 2014, there has been a statistical significant change over the period in question, as indicated in Table 3.

**Table A5. Proportion of women in various groups at risk for a first, second or third birth in 2004, 2009 and 2014.**

	First births			Second births			Third births		
	2004	2009	2014	2004	2009	2014	2004	2009	2014
Basic schooling <sup>a</sup>	0.33	0.34	0.31	0.24	0.21	0.20	0.24	0.18	0.15
High school	0.27	0.25	0.26	0.36	0.32	0.28	0.41	0.37	0.32
Some college ed.	0.20	0.21	0.22	0.28	0.30	0.32	0.28	0.33	0.37
Higher college ed.	0.06	0.07	0.07	0.07	0.09	0.12	0.05	0.08	0.11
Enrolled in ed.	0.33	0.35	0.42	0.11	0.10	0.11	0.08	0.07	0.08
Not enrolled in ed.	0.67	0.65	0.58	0.89	0.90	0.89	0.92	0.93	0.92
In labor market	0.42	0.47	0.53	0.73	0.76	0.80	0.83	0.87	0.89
Not in labor market	0.58	0.53	0.47	0.27	0.24	0.20	0.17	0.13	0.11
Immigrant	0.33	0.29	0.21	0.23	0.27	0.30	0.14	0.17	0.21
Norwegian-born	0.67	0.71	0.79	0.77	0.73	0.70	0.86	0.83	0.79

Note: This table presents the proportion of women in various groups at three points in time, and is as such an abridged version of the data presented in Figures 4 and A2. <sup>a</sup>Women with missing educational status are not shown, but comprise the remaining percentage of women. The majority of women with missing education are at risk for a first birth (14%), whereas they comprise a minute share of women at risk for a third birth (2-4%).

**Figure A1. Proportion of women with zero, one and two children by detailed educational level, 2004-2014.<sup>a</sup>**



<sup>a</sup>In the graph of the childless, there is a rise in the proportion with missing educational information towards the end of the period. This coincides with the decline in the proportion of women with only basic education. Whether this is due to delays in registration or other factors is not obvious. Because educational information in Norway is sent directly from institutions to the national registry, one may assume that the share with missing information is most likely to have relatively low education. The exception here would be some immigrant women with a short duration of residence, who has not yet gotten their actual education from their home country registered in Norway.