

# Religiosity and its impact on fertility projections in Israel

---

Aviad Klinger  
Israel Central Bureau of Statistics

*Joint Eurostat/UNECE Work Session on Demographic Projections  
Geneva, April 18-20, 2016*

# Background

---

- Israel has one of the highest total fertility rates (TFR) in the developed world
- The Jewish population constitutes 75% of Israel's population
- For the past twenty years fertility levels of Jewish women in Israel had been rising

# Objectives

---

- Examine the groups within the Jewish population
- Suggest a better method for setting fertility assumptions

# Jewish population

---

- Culturally diverse
- Fairly religious - four main categories:
  - Haredim (Ultra-Orthodox)
  - Religious
  - Traditional
  - Secular

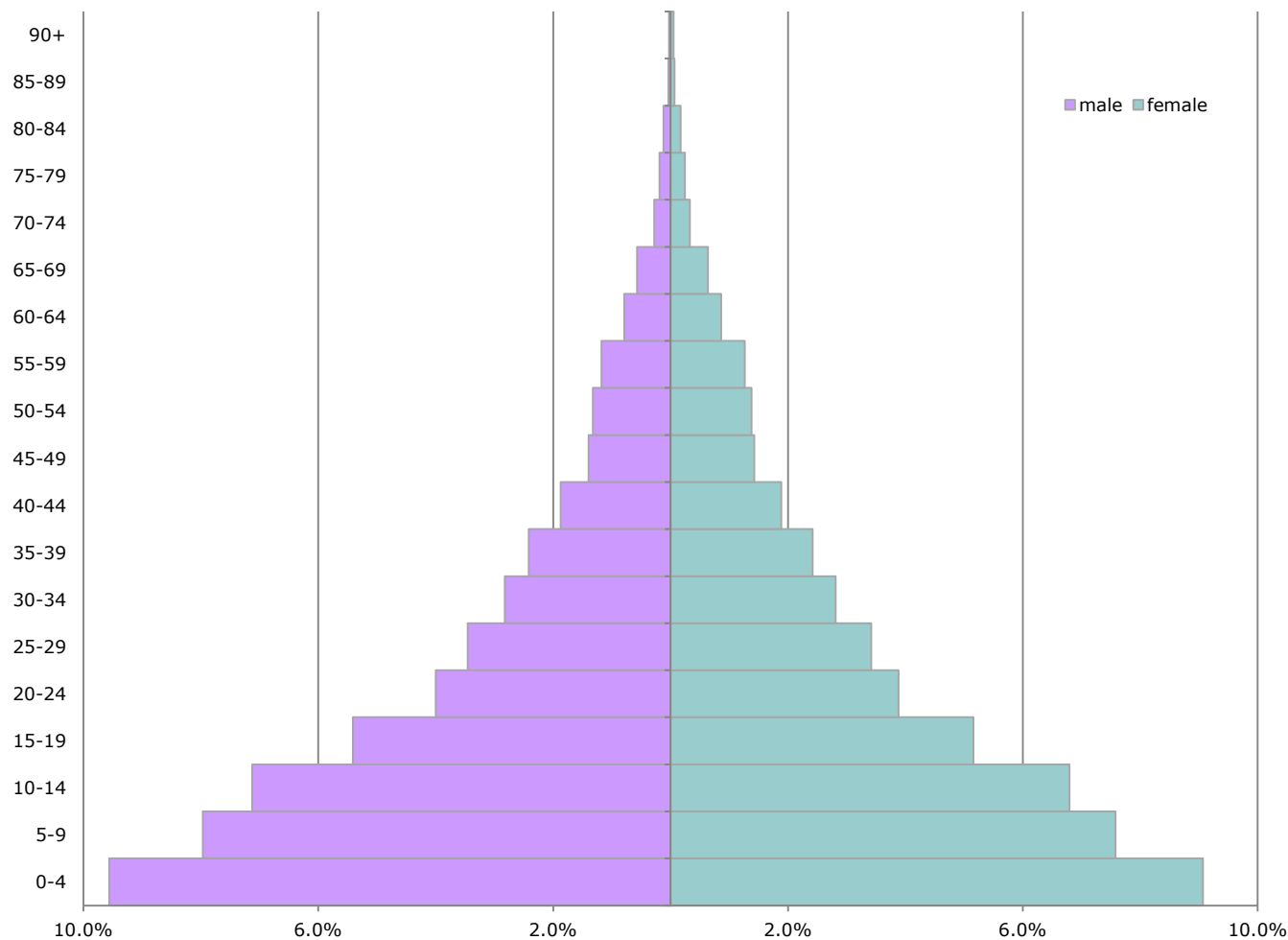
# Population estimates

---

- Religiosity is a self defined trait
- Estimates were produced via Israel Social Survey
- Categories were grouped to:
  - Haredim
  - Religious
  - Not-Religious

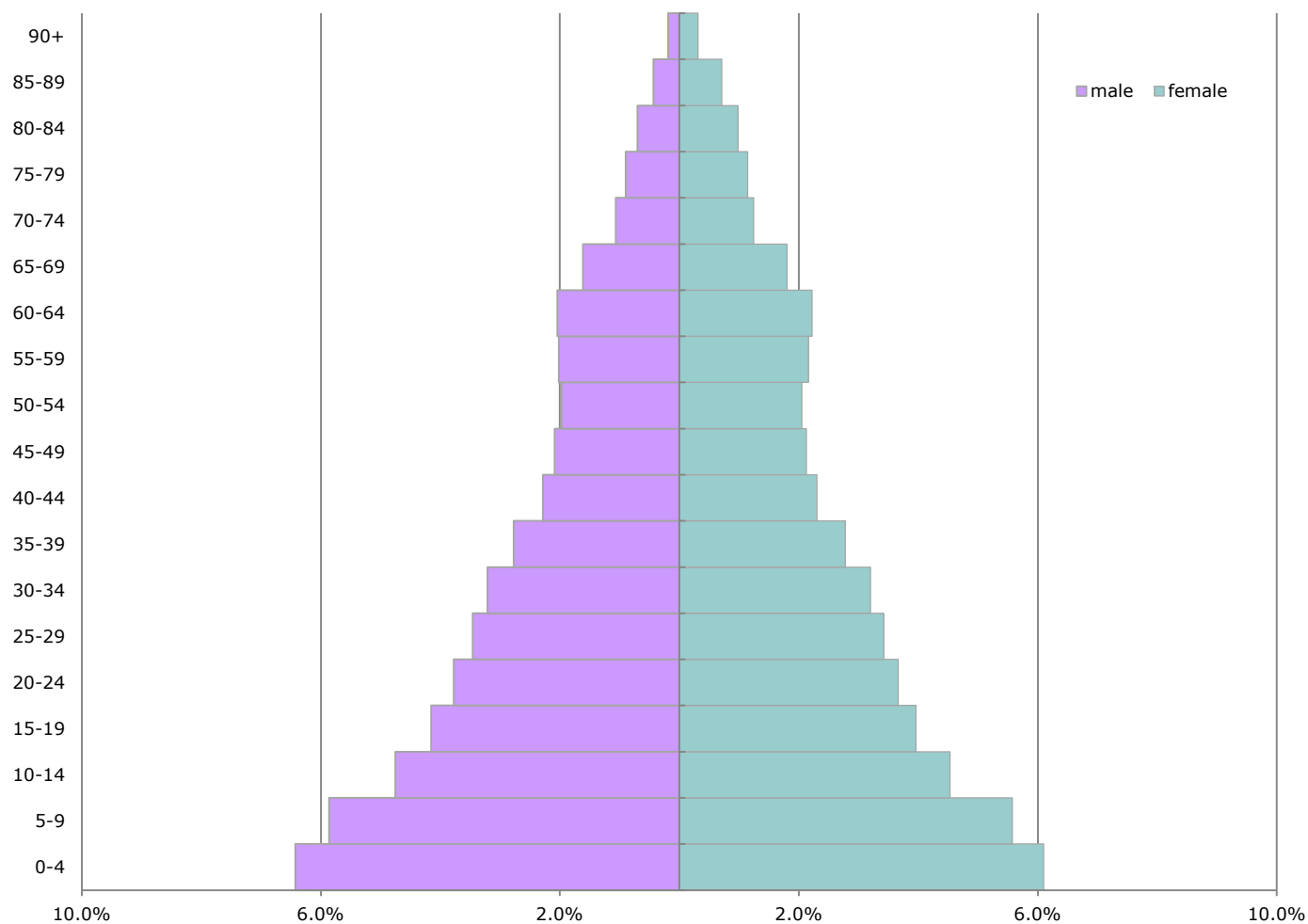
# Population estimates

**Figure 1. age pyramid of Haredim, percent - 2014**



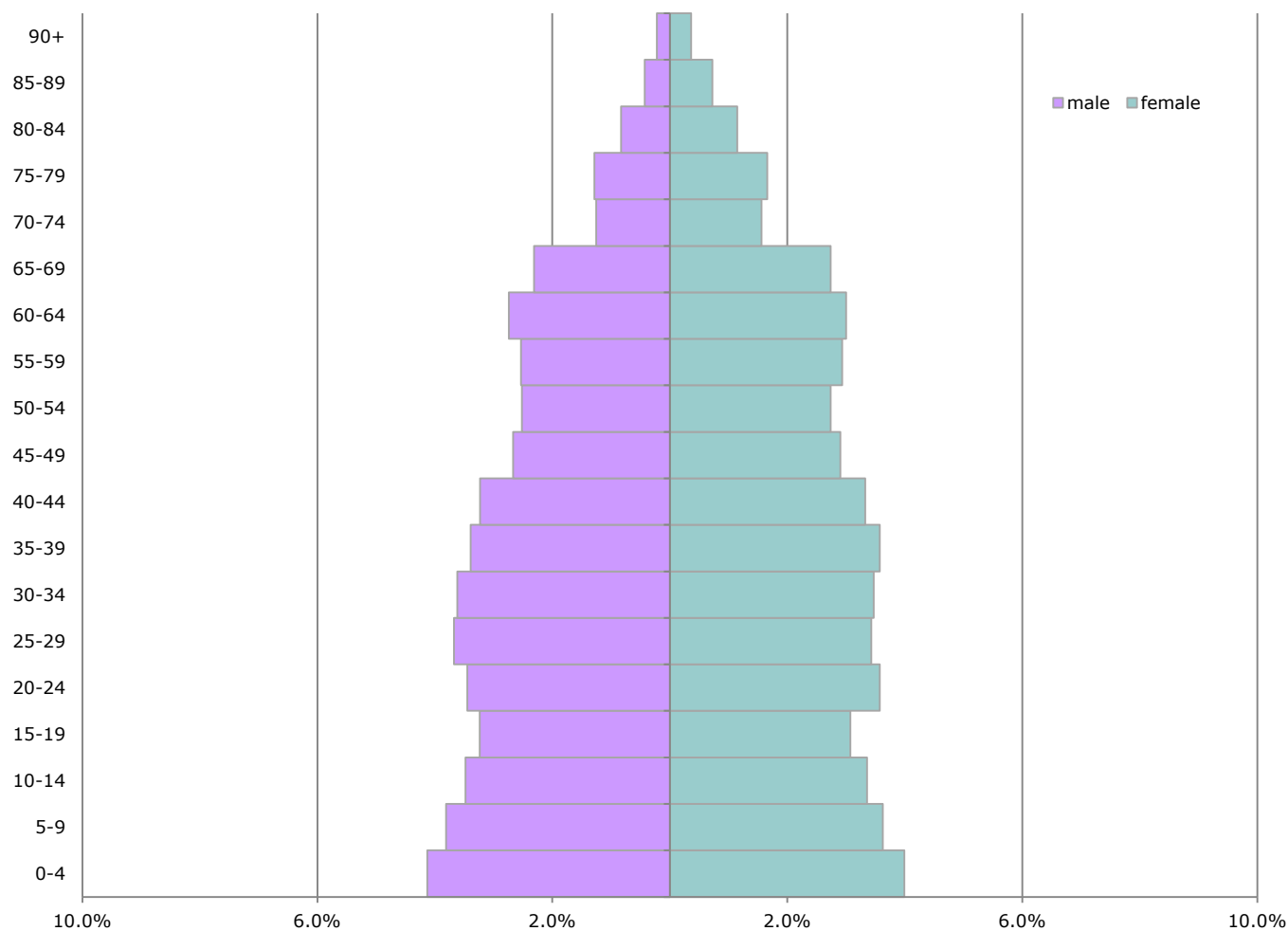
# Population estimates

Figure 2. age pyramid of Religious, percent - 2014



# Population estimates

**Figure 3. age pyramid of Not-Religious, percent - 2014**





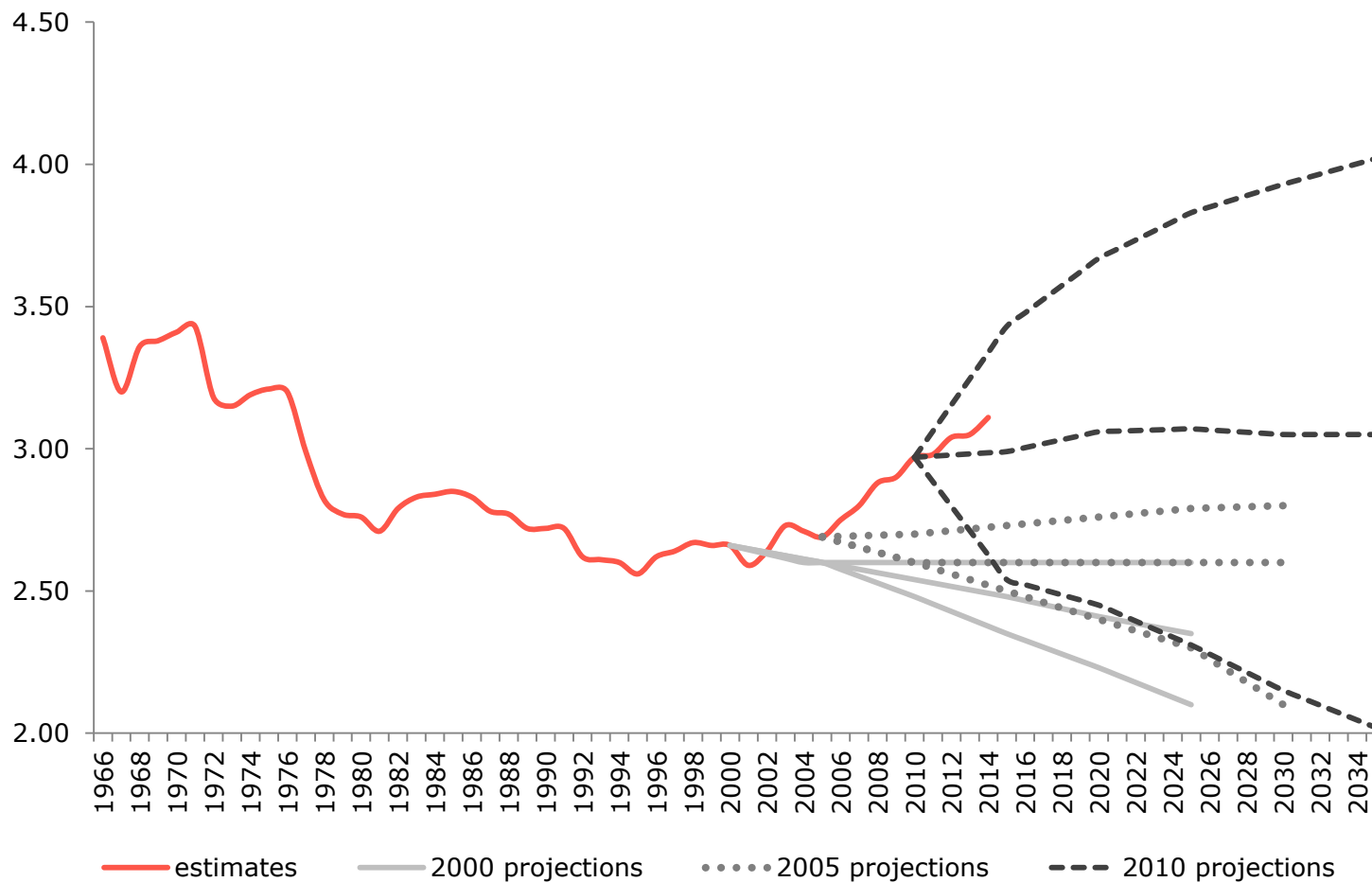
# ICBS population projections

---

- Produced every 5 years
- Future time period - 25 years
- Categorized by religion
- Calculated using the Cohort Component method

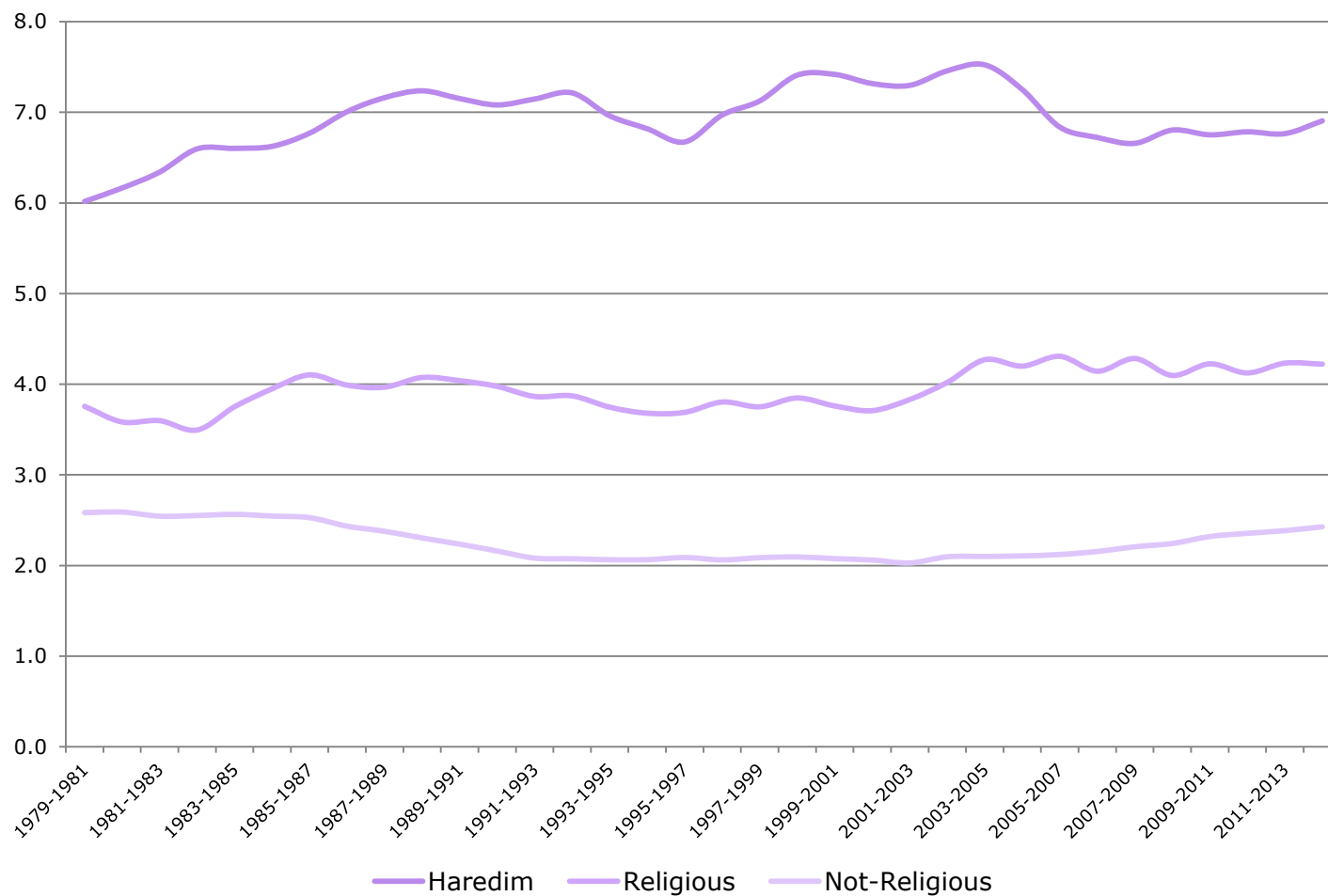
# Past assumptions

Figure 4. Historical Jewish TFR and past assumptions - 1966-2035



# Past fertility

**Figure 5. TFR by level of religiosity - Jewish women - 1979-2014**



# Fertility projections Scenarios

---

- Scenario 1 – current fertility levels
- Scenario 2 – moderate decline in fertility levels
- Scenario 3 – sharp decline in fertility levels

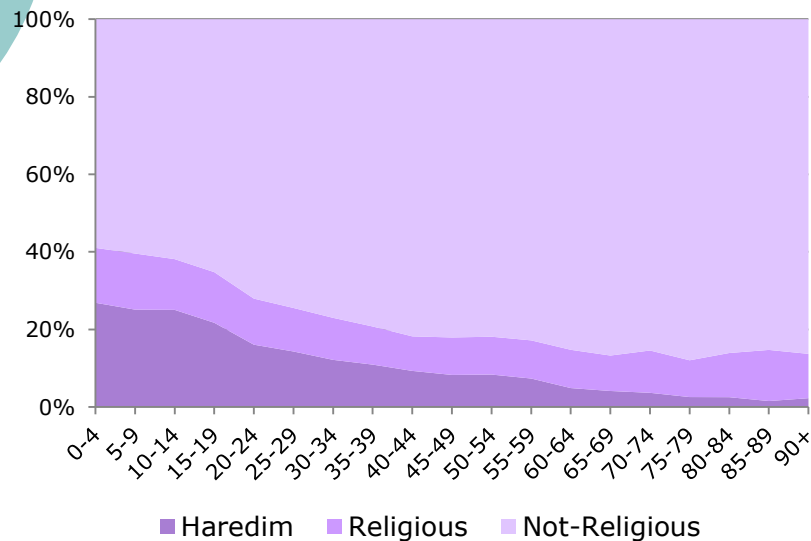
# Fertility projections Scenarios

**Table 1. Possible scenarios for future Jewish TFR**

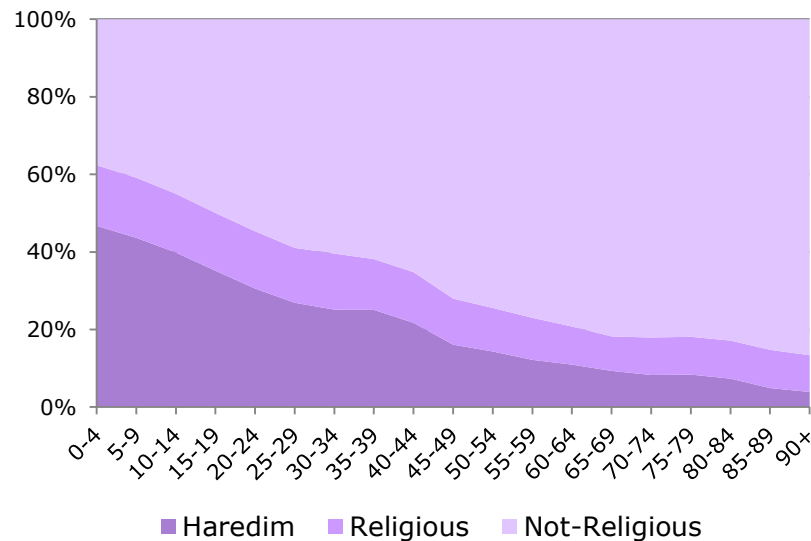
Scenario 1 – fixed						
	2014	2019	2024	2029	2034	2039
Haredim	6.9	6.9	6.9	6.9	6.9	6.9
Religious	4.2	4.2	4.2	4.2	4.2	4.2
Not-Religious	2.4	2.4	2.4	2.4	2.4	2.4
<b>Jewish - total</b>	<b>3.11</b>	<b>3.29</b>	<b>3.45</b>	<b>3.58</b>	<b>3.69</b>	<b>3.82</b>
Scenario 2 - moderate decline						
	2014	2019	2024	2029	2034	2039
Haredim	6.9	6.7	6.5	6.3	6.1	5.9
Religious	4.2	4.0	3.8	3.6	3.4	3.2
Not-Religious	2.4	2.3	2.2	2.1	2.0	1.9
<b>Jewish - total</b>	<b>3.11</b>	<b>3.16</b>	<b>3.18</b>	<b>3.18</b>	<b>3.15</b>	<b>3.12</b>
Scenario 3 - sharp decline						
	2014	2019	2024	2029	2034	2039
Haredim	6.9	6.5	6.1	5.7	5.3	5.0
Religious	4.2	3.9	3.6	3.3	3.0	2.5
Not-Religious	2.4	2.2	2.0	1.8	1.6	1.4
<b>Jewish - total</b>	<b>3.11</b>	<b>3.05</b>	<b>2.95</b>	<b>2.81</b>	<b>2.65</b>	<b>2.49</b>

# Population comparison

**Figure 6. Jewish population by age and level of religiosity - 2014**



**Figure 7. Jewish population by age and level of religiosity - 2039**



# Conclusion

---

- Analysis of fertility rates by level of religiosity can help assess fertility for the whole Jewish population
- If current fertility levels persist, Jewish TFR is expected to continue to rise in the near future

Thank you

---