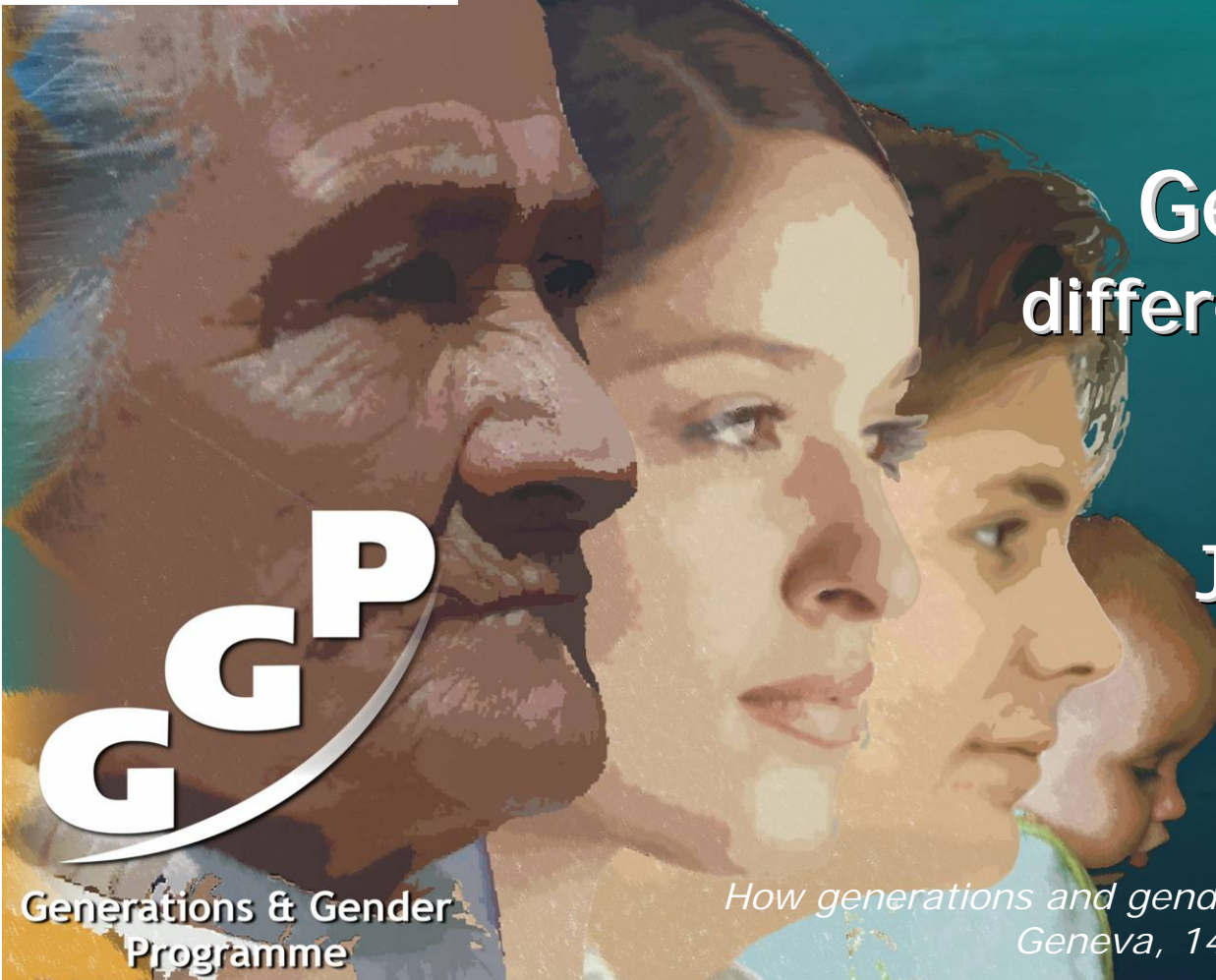




# CHARLES UNIVERSITY IN PRAGUE FACULTY OF SCIENCE

Department of Demography and Geodemography  
<http://boris.natur.cuni.cz/kdgd/>

An artistic illustration showing the profiles of four people of different ages: an elderly man, a young woman, a middle-aged woman, and a young child, all looking towards the right. The style is painterly with soft, blended colors.

Gender issue:  
differentials in attitudes

Jitka Rychtaříková

**GGP**

Generations & Gender  
Programme

*How generations and gender shape demographic change  
Geneva, 14-16 May 2008*



# Gender issue from the view of differentials in attitudes

---

- Do men and women share similar opinions as regards:
  - Childrearing,
  - Caregiving,
  - Female labor force participation,
  - Leadership positions





# Czech GGS (1.wave 2005): Data description (weighted cases)

11. VALUE  
ORIENTATIONS  
AND ATTITUDES

Questions related  
to gender issues  
and people's  
characteristics

	Col %	Count
<b>Gender</b>		
Males	48,89	4 708
Females	51,11	4 923
<b>Total</b>	<b>100,00</b>	<b>9 631</b>
<b>Age</b>		
18-34	30,78	2 965
35-49	28,03	2 699
50-64	25,46	2 452
65-79	15,73	1 515
<b>Total</b>	<b>100,00</b>	<b>9 631</b>
<b>Education</b>		
Basic	19,61	1 889
Vocational	40,48	3 899
Secondary	28,08	2 704
University	11,83	1 139
<b>Total</b>	<b>100,00</b>	<b>9 631</b>
<b>Children</b>		
yes, in the household	34,10	3 284
yes, in and out of the household	11,04	1 063
yes, out of the household	25,93	2 497
no	28,93	2 787
<b>Total</b>	<b>100,00</b>	<b>9 631</b>
<b>Municipality size</b>		
-1 999	16,79	1 617
2 000 - 9 999	24,16	2 327
10 000 - 49 000	31,78	3 061
50 000 - 99 000	10,03	966
100 000+	17,23	1 660
<b>Total</b>	<b>100,00</b>	<b>9 631</b>





# Selected questions related to gender issues

---

- q1112\_c When parents are in need, daughters should take more caring responsibility than sons.
- q1113\_a In a couple it is better for the man to be older than the woman.
- q1113\_b If a woman earns more than her partner, it is not good for the relationship.
- q1113\_c On the whole, men make better political leaders than women do.
- q1113\_d Women should be able to decide how to spend the money they earn without having to ask their partner's permission.
- q1113\_f A pre-school child is likely to suffer if his/her mother works.
- q1113\_h If parents divorce it is better for the child to stay with the mother than with the father.
- q1114\_a When jobs are scarce, men should have more right to a job than women.





# Outlines:

---

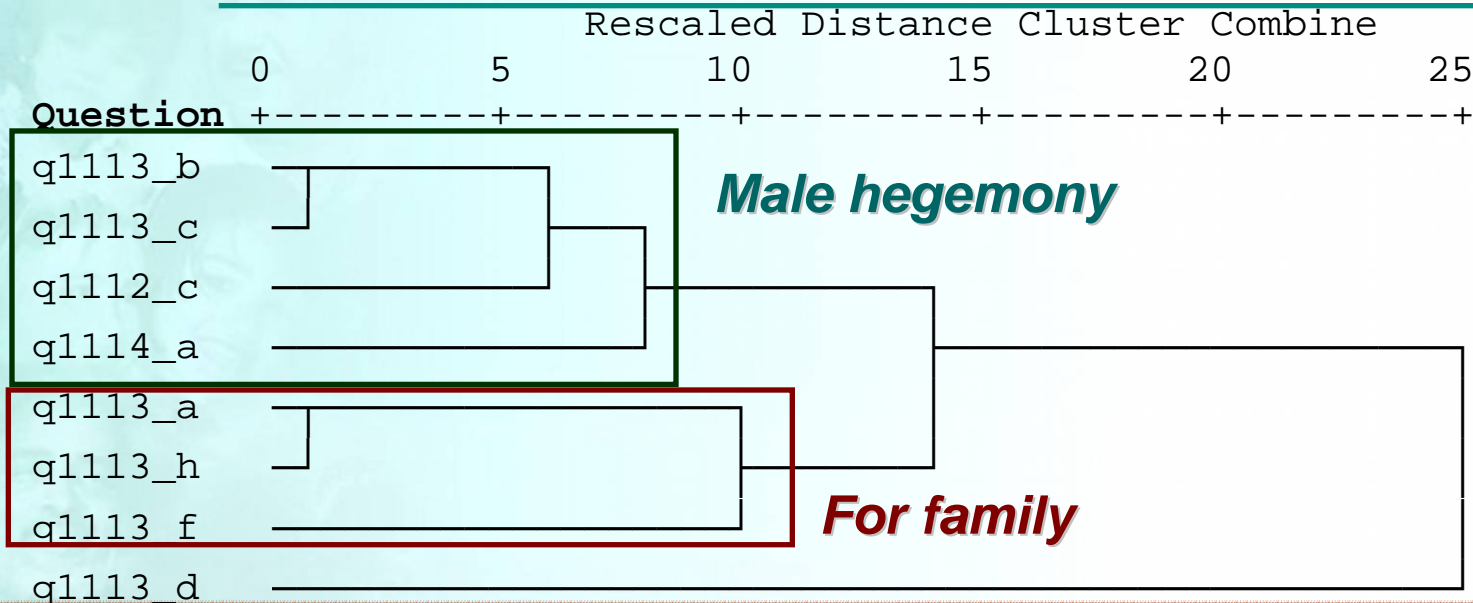
- ✓ Cluster analysis of selected variables in order to detect their proximity.
- ✓ Logistic regression analysis in order to describe the relationship between a categorical ordinal response variable (individual questions) and a set of predictor (categorical) variables (gender, age, education, presence of children, municipality size).
- ✓ To reveal the most significant differences in gender attitudes and to investigate the impact of the other variables in the model.





# Clustering variables :

Two groups (male hegemony or for family), and one outlier (when agreement to questions)



**q1113\_b** If a woman earns more than her partner, it is not good for the relationship

**q1113\_c** On the whole, men make better political leaders than women do

q1112\_c When parents are in need, daughters should take more caring responsibility than sons

q1114\_a When jobs are scarce, men should have more right to a job than women

q1113\_a In a couple it is better for the man to be older than the woman

q1113\_h If parents divorce it is better for the child to stay with the mother than with the father

q1113\_f A pre-school child is likely to suffer if his/her mother works

**q1113\_d** Women should be able to decide how to spend the money they earn without having to ask their partner's permission



# Two groups of variables are distinguished:

---

## 1. group: “Male breadwinner hegemony behavior“

q1113\_b If a woman earns more than her partner, it is not good for the relationship

q1113\_c On the whole, men make better political leaders than women do

q1112\_c When parents are in need, daughters should take more caring responsibility than sons

q1114\_a When jobs are scarce, men should have more right to a job than women

## 2. group: “Pro family orientation“ (mother is more important)

q1113\_a In a couple it is better for the man to be older than the woman

q1113\_h If parents divorce it is better for the child to stay with the mother than with the father

q1113\_f A pre-school child is likely to suffer if his/her mother works





# Logistic regression modelling

---

- Model With Only Main Effects (interactions have deteriorated modelling)
- Proportional Odds Model for Ordinal Logistic Regression
- The response is coded in a variable having five levels:  
1=strongly agree 2=agree 3=neither agree nor disagree  
4=disagree 5=strongly disagree
- Probabilities modeled are cumulated over the lower ordered values
- Predictor variables: gender, age, education, children presence, municipality size
- (marital status has not been significant and has not been included)





# If a woman earns more than her partner, it is not good for the relationship

Probability of agreement is modeled (Cumulative logistic regression)

Agreement increases with older age, low education, childlessness, and in big cities,



Generations & Gender Programme

<i>Gender</i>	<i>b</i>	<i>signif.</i>	<i>exp (b)</i>
Males			1
Females	0,001	0,974	1,001
<i>Age</i>			
18-34			1
35-49	0,382	0,000	1,466
50-64	0,302	0,000	1,353
65-79	0,544	0,000	1,724
<i>Education</i>			
Basic			1
Vocational	-0,234	0,000	0,791
Secondary	-0,318	0,000	0,728
University	-0,295	0,000	0,745
<i>Children</i>			
yes, in the household			1
yes, in and out of the household	-0,079	0,256	0,924
yes, out of the household	0,102	0,096	1,107
no	0,293	0,000	1,340
<i>Municipality size</i>			
-1 999			1
2 000 - 9 999	0,078	0,191	1,081
10 000 - 49 000	0,142	0,012	1,152
50 000 - 99 000	0,089	0,235	1,093
100 000+	0,273	0,000	1,314

How generations and gender shape demographic change  
Geneva, 14-16 May 2008



# On the whole, men make better political leaders than women do

Probability of agreement is modeled (Cumulative logistic regression)

Agreement increases when a male, older age, low education



Generations & Gender Programme

<i>Gender</i>	<i>b</i>	<i>signif.</i>	<i>exp (b)</i>
Males			1
Females	-0,690	0,000	0,502
<i>Age</i>			
18-34			1
35-49	0,093	0,079	1,098
50-64	0,143	0,019	1,154
65-79	0,388	0,000	1,474
<i>Education</i>			
Basic			1
Vocational	-0,173	0,001	0,841
Secondary	-0,255	0,000	0,775
University	-0,147	0,035	0,864
<i>Children</i>			
yes, in the household			1
yes, in and out of the household	0,023	0,741	1,023
yes, out of the household	0,117	0,054	1,124
no	0,090	0,085	1,094
<i>Municipality size</i>			
-1 999			1
2 000 - 9 999	0,066	0,262	1,068
10 000 - 49 000	-0,104	0,062	0,901
50 000 - 99 000	-0,072	0,327	0,930
100 000+	-0,046	0,470	0,955

How generations and gender shape demographic change  
Geneva, 14-16 May 2008



# When parents are in need, daughters should take more caring responsibility than sons

Probability of agreement is modeled (Cumulative logistic regression)

Agreement increases when a male, older age, low education, childless, small municipality



Generations & Gender Programme

<i>Gender</i>	<i>b</i>	<i>signif.</i>	<i>exp (b)</i>
Males			1
Females	-0,091	0,016	0,913
<i>Age</i>			
18-34			1
35-49	0,244	0,000	1,276
50-64	0,306	0,000	1,358
65-79	0,651	0,000	1,918
<i>Education</i>			
Basic			1
Vocational	-0,150	0,004	0,861
Secondary	-0,439	0,000	0,644
University	-0,488	0,000	0,614
<i>Children</i>			
yes, in the household			1
yes, in and out of the household	-0,098	0,156	0,907
yes, out of the household	-0,054	0,371	0,947
no	0,158	0,002	1,171
<i>Municipality size</i>			
-1 999			1
2 000 - 9 999	-0,002	0,978	0,998
10 000 - 49 000	0,098	0,078	1,103
50 000 - 99 000	-0,021	0,772	0,979
100 000+	-0,213	0,001	0,808

How generations and gender shape demographic change  
Geneva, 14-16 May 2008



# When jobs are scarce, men should have more right to a job than women

Probability of agreement is modeled (Cumulative logistic regression)

Agreement increases when a male, older age, low education, childless, small municipality



<i>Gender</i>	<i>b</i>	<i>signif.</i>	<i>exp (b)</i>
Males			1
Females	-0,460	0,000	0,631
<i>Age</i>			
18-34			1
35-49	0,276	0,000	1,317
50-64	0,388	0,000	1,474
65-79	0,828	0,000	2,288
<i>Education</i>			
Basic			1
Vocational	-0,162	0,002	0,851
Secondary	-0,573	0,000	0,564
University	-0,633	0,000	0,531
<i>Children</i>			
yes, in the household			1
yes, in and out of the household	-0,105	0,125	0,901
yes, out of the household	-0,090	0,134	0,914
no	0,143	0,006	1,154
<i>Municipality size</i>			
-1 999			1
2 000 - 9 999	-0,308	0,000	0,735
10 000 - 49 000	-0,204	0,000	0,815
50 000 - 99 000	-0,478	0,000	0,620
100 000+	-0,675	0,000	0,509



# In a couple it is better for the man to be older than the woman

Probability of agreement is modeled (Cumulative logistic regression)

Agreement increases when older age, childless



Generations & Gender Programme

<i>Gender</i>	<i>b</i>	<i>signif.</i>	<i>exp (b)</i>
Males			1
Females	-0,039	0,305	0,962
<i>Age</i>			
18-34			1
35-49	0,345	0,000	1,412
50-64	0,425	0,000	1,529
65-79	0,849	0,000	2,336
<i>Education</i>			
Basic			1
Vocational	-0,091	0,080	0,913
Secondary	-0,104	0,063	0,902
University	-0,154	0,027	0,857
<i>Children</i>			
yes, in the household			1
yes, in and out of the household	0,066	0,336	1,069
yes, out of the household	0,140	0,022	1,150
no	0,153	0,003	1,165
<i>Municipality size</i>			
-1 999			1
2 000 - 9 999	-0,101	0,087	0,904
10 000 - 49 000	-0,188	0,001	0,828
50 000 - 99 000	-0,148	0,045	0,862
100 000+	-0,148	0,021	0,862

How generations and gender shape demographic change  
Geneva, 14-16 May 2008



# If parents divorce it is better for the child to stay with the mother than with the father

Probability of agreement is modeled (Cumulative logistic regression)

Agreement increases when **a female,**  
**older age,**  
**low education**

	<b>b</b>	<b>signif.</b>	<b>exp (b)</b>
<b>Gender</b>			
Males			1
Females	0,438	0,000	1,549
<b>Age</b>			
18-34			1
35-49	0,062	0,249	1,064
50-64	0,234	0,000	1,264
65-79	0,476	0,000	1,609
<b>Education</b>			
Basic			1
Vocational	-0,238	0,000	0,788
Secondary	-0,419	0,000	0,658
University	-0,547	0,000	0,579
<b>Children</b>			
yes, in the household			1
yes, in and out of the household	0,018	0,796	1,018
yes, out of the household	-0,001	0,985	0,999
no	-0,068	0,196	0,934
<b>Municipality size</b>			
-1 999			1
2 000 - 9 999	-0,066	0,270	0,936
10 000 - 49 000	-0,030	0,594	0,970
50 000 - 99 000	-0,163	0,030	0,850
100 000+	-0,056	0,388	0,945





# A pre-school child is likely to suffer if his/her mother works

Probability of agreement is modeled (Cumulative logistic regression)

Agreement increases when a male, older age, low education

<i>Gender</i>	<i>b</i>	<i>signif.</i>	<i>exp (b)</i>
Males			1
Females	-0,167	0,000	0,846
<i>Age</i>			
18-34			1
35-49	0,206	0,000	1,229
50-64	0,286	0,000	1,331
65-79	0,557	0,000	1,745
<i>Education</i>			
Basic			1
Vocational	-0,100	0,055	0,905
Secondary	-0,213	0,000	0,808
University	-0,375	0,000	0,687
<i>Children</i>			
yes, in the household			1
yes, in and out of the household	0,061	0,371	1,063
yes, out of the household	-0,032	0,598	0,969
no	0,081	0,117	1,085
<i>Municipality size</i>			
-1 999			1
2 000 - 9 999	-0,359	0,000	0,699
10 000 - 49 000	-0,383	0,000	0,682
50 000 - 99 000	-0,275	0,000	0,760
100 000+	-0,054	0,398	0,947





# Women should be able to decide how to spend the money they earn without having to ask their partner's permission

Probability of agreement is modeled (Cumulative logistic regression)

Agreement increases when a female, young age, higher education

<i>Gender</i>	<i>b</i>	<i>signif.</i>	<i>exp (b)</i>
Males			1
Females	0,672	0,000	1,957
<i>Age</i>			
18-34			1
35-49	-0,016	0,765	0,984
50-64	-0,220	0,000	0,803
65-79	-0,393	0,000	0,675
<i>Education</i>			
Basic			1
Vocational	0,007	0,889	1,007
Secondary	0,224	0,000	1,251
University	0,279	0,000	1,322
<i>Children</i>			
yes, in the household			1
yes, in and out of the household	0,177	0,011	1,193
yes, out of the household	0,053	0,385	1,054
no	0,054	0,303	1,055
<i>Municipality size</i>			
-1 999			1
2 000 - 9 999	0,160	0,007	1,174
10 000 - 49 000	-0,006	0,918	0,994
50 000 - 99 000	0,067	0,369	1,069
100 000+	0,048	0,456	1,049





# Main conclusions on male-female differentials

- On the whole, men make better political leaders than women do: *women 2 times more often than men disagree* (odds ratios: 0,502;  $1/0,502=1,992$ )
- Women should be able to decide how to spend the money they earn without having to ask their partner's permission: *women 2 times more often than men agree* (odds ratios: 1,957)
- When jobs are scarce, men should have more right to a job than women: *women 1,6 times more often than men disagree* (odds ratios: 0,631;  $1/0,631=1,585$ )
- If parents divorce it is better for the child to stay with the mother than with the father: *women 1,5 times more often than men agree* (odds ratios: 1,549)
- A pre-school child is likely to suffer if his/her mother works: *women 1,2 times more often than men disagree* (odds ratios: 0,846;  $1/0,846=1,182$ )
- When parents are in need, daughters should take more caring responsibility than sons: *women 1,1 times more often than men disagree* (odds ratios: 0,913;  $1/0,913=1,095$ )





# The impact of the other variables

- Higher education and younger age contribute the most to gender equality.
- **A pre-school child is likely to suffer if his/her mother works:** the agreement is less differentiated according to gender but increases with age, and to some extent with lower education.

Surprisingly the agreement is high in the smallest municipalities, however also increases with municipality size (*Lack of facilities, Higher income of husbands/partners?*)

