

# Our Brand Values

**Halatlı Taşımacılık** installs and operates ropeway systems with high-tech solutions and environmental, sustainable, safe footprint together with strategic partner **LEITNER ropeways.**

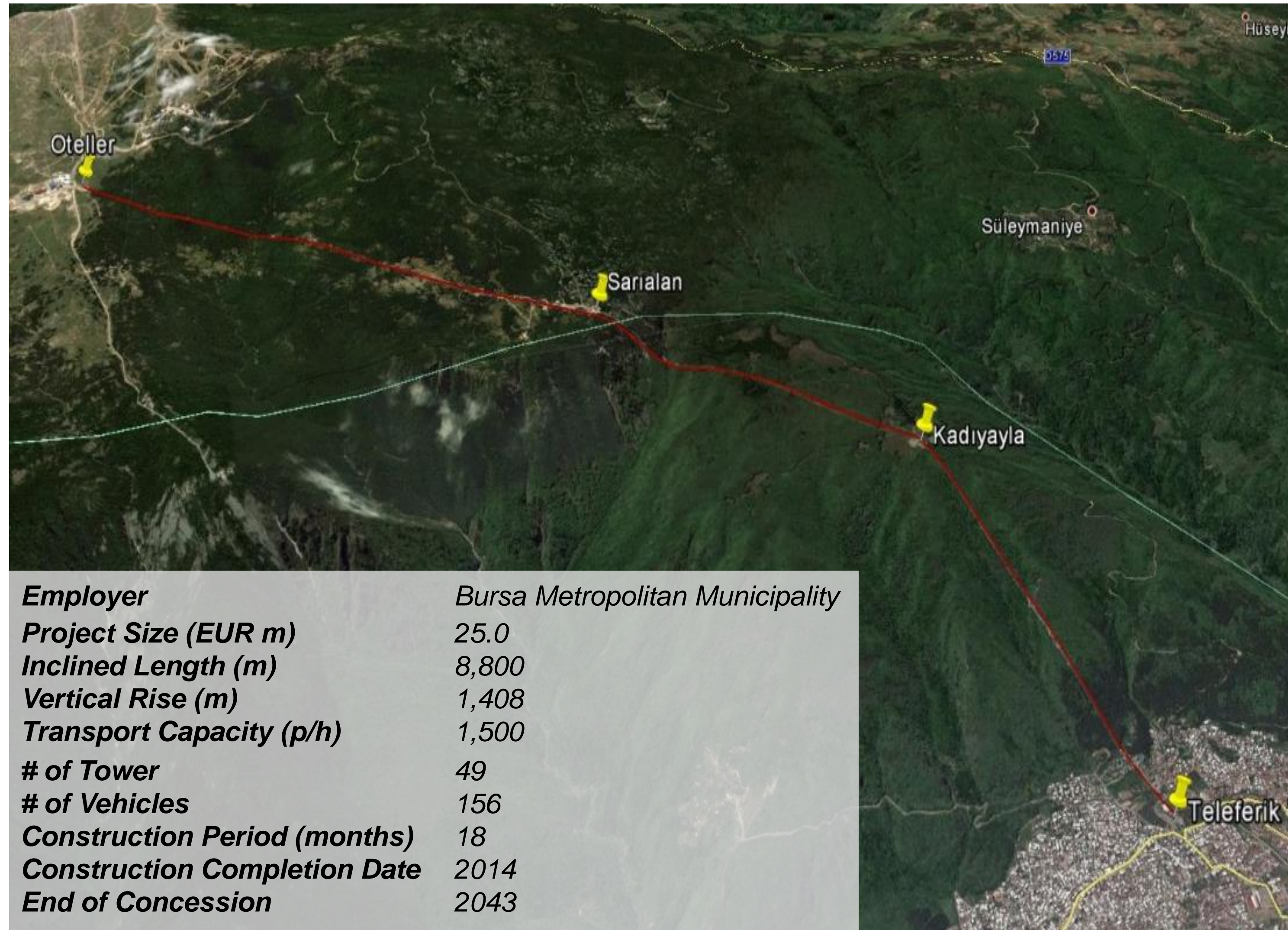
**Halatlı Taşımacılık** is the first company in Turkey which was established with the aim to provide urban passenger transportation solutions, tourism applications and winter sports installations.

Teleferik Holding Group is a Bursa based group mainly focusing ropeway line construction and operation. The Group has two main business in ropeway industry;

- Constructing ropeway lines as a contractor for municipalities and other investors, via Halatlı Taşımacılık Mak. Müh. İnş. San. Ve Tic. Ltd. Şti.
- Constructing and operating ropeway lines as an investor via SPV's under the Teleferik Holding.



## Bursa-Uludağ Ropeway Line, Bursa – Turkey



<b>Employer</b>	Bursa Metropolitan Municipality
<b>Project Size (EUR m)</b>	25.0
<b>Inclined Length (m)</b>	8,800
<b>Vertical Rise (m)</b>	1,408
<b>Transport Capacity (p/h)</b>	1,500
<b># of Tower</b>	49
<b># of Vehicles</b>	156
<b>Construction Period (months)</b>	18
<b>Construction Completion Date</b>	2014
<b>End of Concession</b>	2043

### ***Environmental, sustainable and safe***

- The Group has obtained the concession rights of Bursa-Uludağ Ropeway Project from the previous preferred bidder, Şentürkler İnşaat, covering 8,8 km long ropeway line, in 2012 for 30 years including construction period. The project is executed via Bursa Teleferik A.Ş. Total investment amount is EUR 25 m where the c.70% of the investment amount has been financed with a project finance loan from a Türkiye Finans Katılım Bankası through three tranches with 8 years tenor including one year of grace period.
- The first phase of the project, Teferrüç, Kadiyayla and Sarialan stations and the line in between, has been completed and became operational as of June 2014.
- The second phase of the project is also operational as of 30th December, 2014. The total traffic of project has exceeded 1,5m annual passengers (man-way) as of December 2015 where the annual passenger guarantee of the municipality is 300k.
- The main revenue source of the company is ticket sales. In addition to the ticket sales, the company is generating rental income through rentable areas totalling 2,9k sqm currently and is planned to be increased to 3,9k sqm in the following two years. The management expects to reach c.60% EBITDA margin with TL 31m revenue generation in 2018.

**Bursa Teleferik by numbers;**

**Total Investment: 25 Million €**

**2014 Number of Passengers: 521.820 (7 June-31 Dec)**

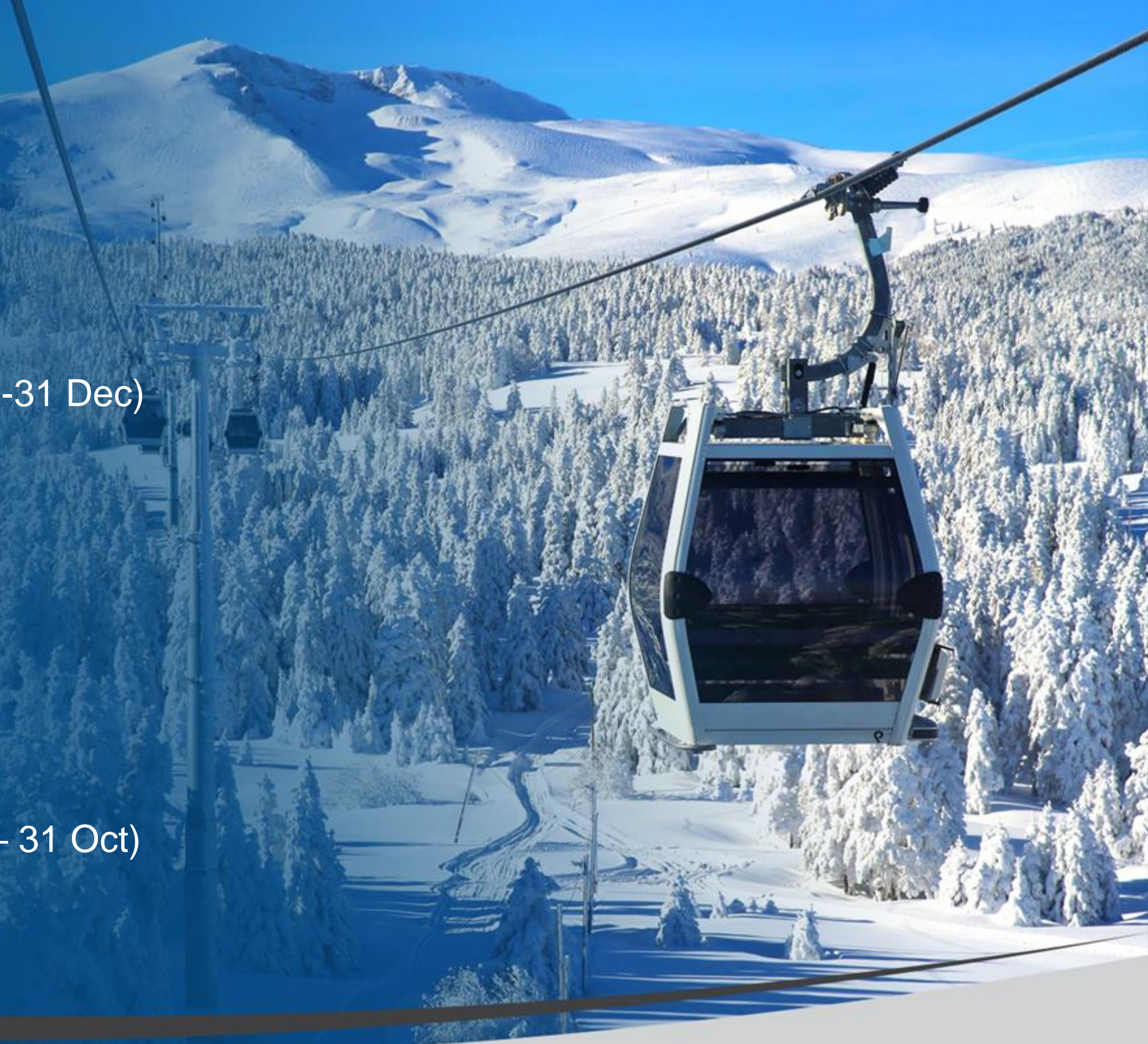
**2014 Revenue: 7.5 Million TL**

**2015 Number of Passengers: 811.481**

**2015 Revenue: 19 Million TL**

**2016 Number of Passengers: 662.545 (1 Jan – 31 Oct)**

**2016 Revenue: 17 Million TL**



# Bursa Gökdere Urban Transportation Project, Bursa -Turkey

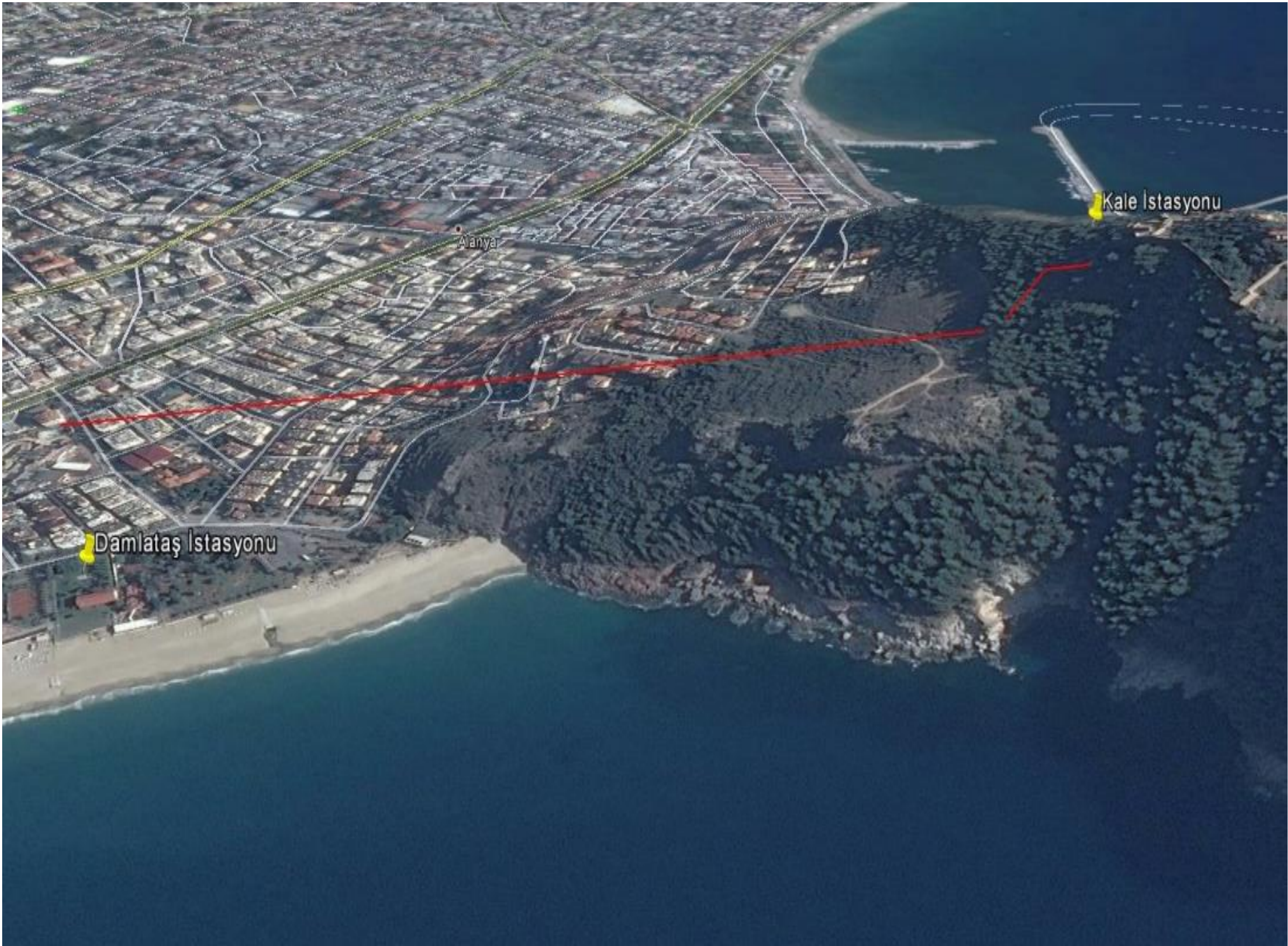


- 1- Integration of the existing rail network
- 2- Connection with the Bursa-Uludag Ropeway Line
- 3- Less burden on traffic in the city
- 4- Connection of outskirts to the city center

<b>Employer</b>	Bursa Metropolitan Municipality
<b>Project Size (EUR m)</b>	23.0
<b>Inclined Length (m)</b>	3,843
<b>Vertical Rise (m)</b>	257
<b>Transport Capacity (p/h)</b>	2,000
<b># of Tower</b>	23
<b># of Vehicles</b>	90
<b>Construction Period (months)</b>	18
<b>Status</b>	Tender Preparation

- Bursa Metropolitan Municipality is currently planning to extend its public transportation system by incorporating a ropeway line to its already existing rail network.
- The planned Gokdere Ropeway Line will connect the Gokdere region to Bursa-Uludağ Ropeway line. With the construction of this line, the tourists coming from the other cities via busses and ferries will easily reach to Bursa-Uludag Ropeway line by using only public transportation in Bursa.
- The Municipality is planning to lighten the existing heavy traffic in the route connecting the Zafer Park, Irgandı Bridge and Teferrüç region by constructing the ropeway line.
- Currently, the Municipality has completed the project development phase and is preparing for the tender of the project within BOT structure.
- The project is expected to be tendered in mid 2016 and the Group is executing the technical and financial feasibility studies currently for the project.

# Alanya Castle Ropeway Line, Antalya - Turkey



<b>Employer</b>	<i>Alanya Municipality</i>
<b>Project Size (EUR m)</b>	5.0
<b>Inclined Length (m)</b>	779
<b>Vertical Rise (m)</b>	160
<b>Transport Capacity (p/h)</b>	1,200
<b># of Tower</b>	5
<b># of Vehicles</b>	16
<b>Construction Period (months)</b>	6
<b>Status</b>	<i>Construction preparation</i>

- The Group has obtained the concession rights of Alanya Castle Ropeway Line Project covering 0,8 km long ropeway line, in 2012 for 20 years excluding construction period. The project will be executed via Alanya Teleferik A.Ş. Total expected investment amount is EUR 5m which will be financed with a combination of bank loan and equity.
- Currently the licensing process of the project is ongoing and the Group is waiting for the last permission; the approval of the revised zoning plan. The approval is expected to be obtained in 2016 and the construction is expected to be commenced upon the approval. The concession period of 20 years will be initiated after the completion of the construction.
- The project will include two stations; Damlatas Station as the bottom station, which will include a restaurant and a souvenir shop and Kale Station. The bottom station will be located in the region of Damlatas Cave and Cleopatra Beach and the ropeway line will provide direct transportation to the Alanya Castle.
- Upon the completion of the construction the municipality is planning to stop the use of tour busses to reach the Castle in order to prevent the environmental and social issues caused by the traffic in the route and potential damage to the historical structure on the route.