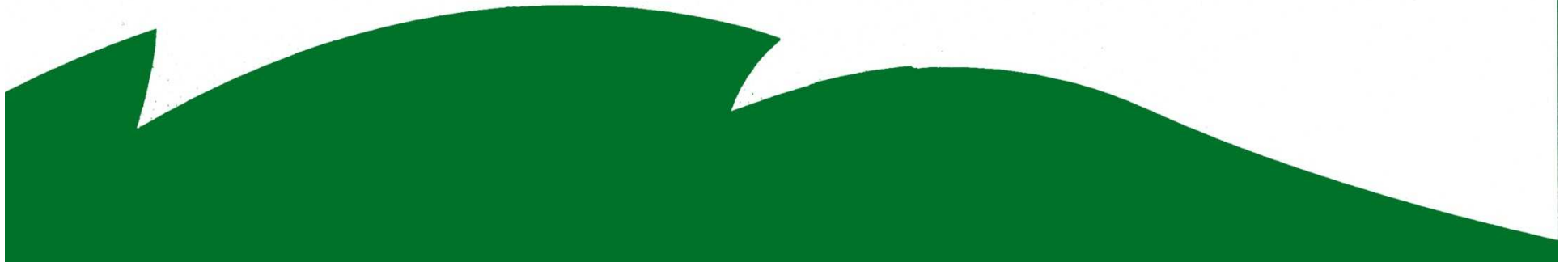


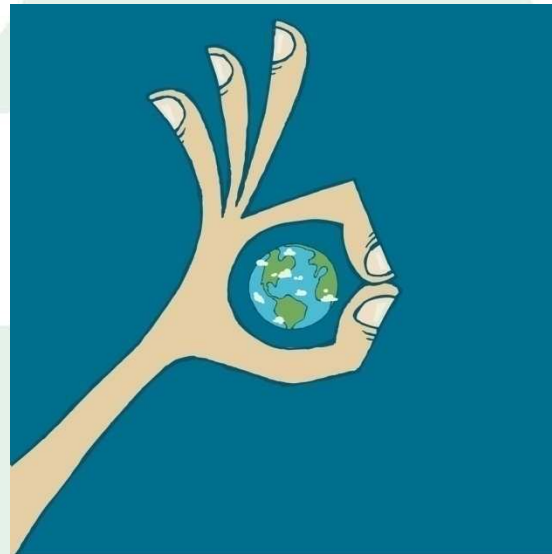


***EU Integration and Water Management – Legal and Institutional Challenges***

***Jadranka Ivanova  
Head of Department for EU  
Ministry of Environment and Physical Planning  
Macedonia***



Water management (sustainable water management) requires actions from different levels and sectors of government, directly and indirectly, and from different stakeholders.



# Legislation



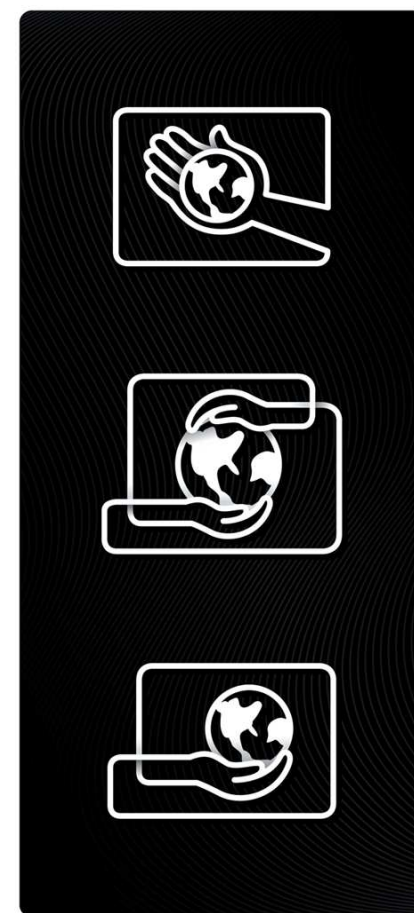
- ***Process of approximation of the water acugis***
  - *old systems that were more traditional (comand and cotrole)*
  - *some functions were more focused on water use than water management*
- ***Opportunities:***
  - *Build up new legislation that is based on the same principles and provides the same legal ground for actions and regional cooperation*
- ***Challenges:***
  - *Incorporate existing experience into new concept of water management*

# Institutions

- **Adapting old institutions for the implementation of the legislation:**
  - Central
  - Local (regional)
- **Creating new institutions**
- **Introducing new principles of governance:**
  - regulatory
  - voluntary
  - both

# WFD

- Provides bases for establishment of joint management of trans-boundary water bodies:
  - identification of qualitative and quantitative characteristics of waters
  - monitoring
  - protection
  - water management plans and programmes
  - stakeholders participation in decision making process
  - cooperation with neighbouring states



# Trans-boundary cooperation

- Select functions
- Build up joint knowledge
- Identify and include stakeholders
- Build trust between intuitions
- Build “social trust” between stakeholders will reduce conflicts over competing uses and controversial policies



# Stakeholders

Identify stakeholders according to their impact to the water bodies (art.5 WFD – review of impact of human activities)

Empowering municipalities and engaging non-state actors will improve the implementation of water management programs

Improved transparency will increase political legitimacy

Implement EIA and SEA procedures as routine practices

## ***National implementation***

- Implementation should start at national level
- Creating capacity for performing national functions of water management and linked-side functions that contribute to water management:
  - IPPC
  - Waste Management
  - Policies development - integration
  - Nature protection – protected areas (article 6 FWD)
- Establishment of water licence system (art. 9 FWD – recovery of costs) for discharge and water use
- Capacity building of administration



# Regional Implementation

- Trans-boundary cooperation is a key element that one country can employ in its own national water management strategy
- Without cooperation with its neighbouring countries it is difficult to believe that national strategy can achieve its set goals
- Create regional links at different level of government and with different stakeholders involved in water management
- Create national institutions that will foster regional cooperation
- Regional cooperation forms an essential part of the process of integration of the candidate and potential candidate countries into the European Union.

# Challenges

- Discuss with stakeholders the differences and similarities of responsibilities between upper stream and down stream riparian (neighbouring) country (party)
- Establish indicators for good water management (make difference between upper and down stream countries and last country down the river – responsibility)
- Create or adapting institutions – administration that will have ownership of both national and trans-boundary water management
- Establish joint bodies based on principles of accountability, fairness and of shared governance that involves a wide range of actors in decision making process
- Regional institutions and mechanisms may facilitate the achievements in water management

**Thank you for your attention !**

