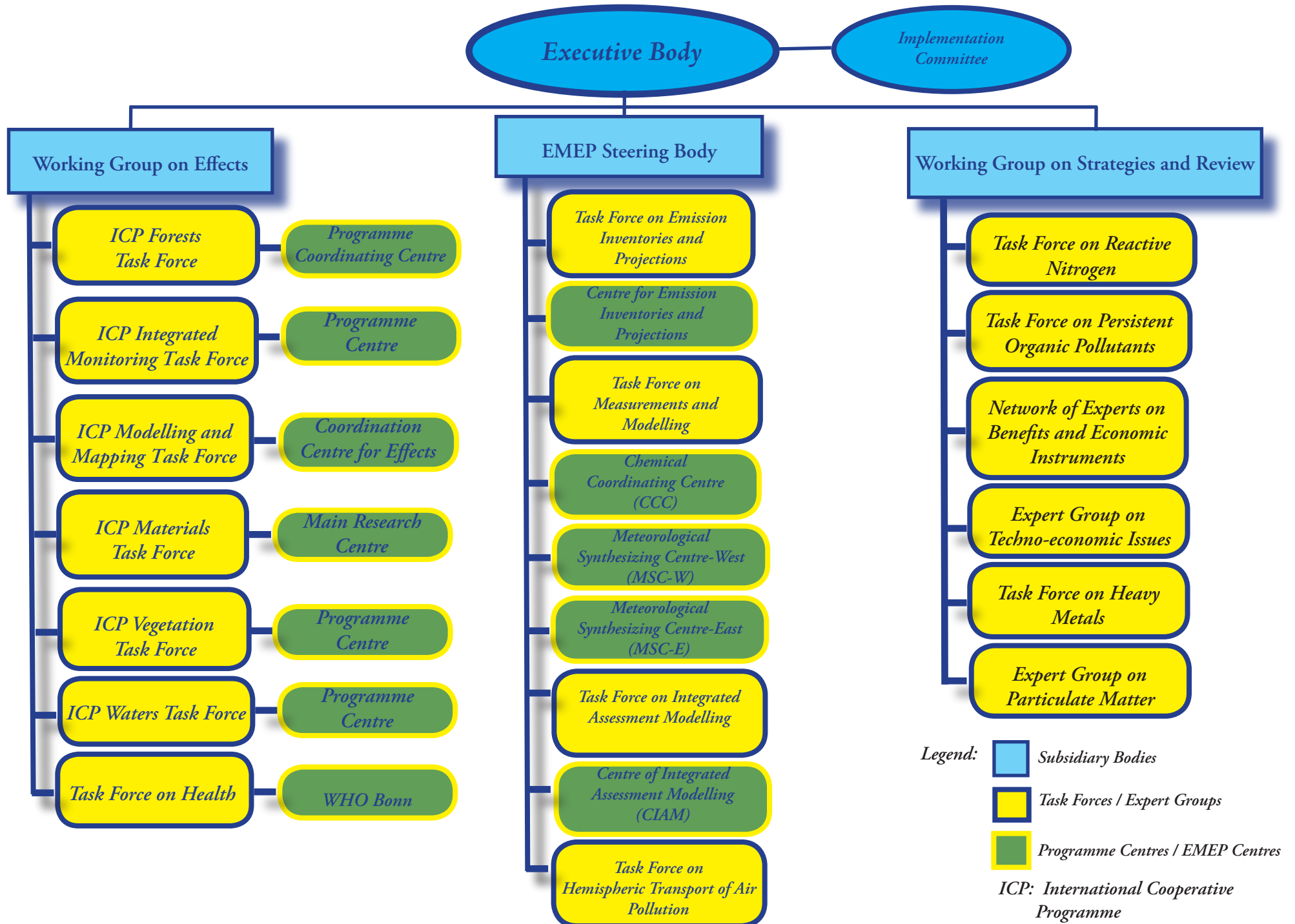


INTERGOVERNMENTAL BODIES, EXPERT GROUPS AND SCIENTIFIC CENTRES



SCIENTIFIC CENTRES

FOR INTERNATIONAL COOPERATIVE PROGRAMMES (ICPs), COOPERATIVE PROGRAMME FOR MONITORING AND EVALUATION OF THE LONG-RANGE TRANSMISSION OF AIR POLLUTANTS IN EUROPE (EMEP), AND THE TASK FORCE ON INTEGRATED ASSESSMENT MODELLING

**MAIN PROGRAMME COORDINATING CENTRE FOR ICP ON ASSESSMENT AND MONITORING OF AIR POLLUTION EFFECTS ON FORESTS
FEDERAL RESEARCH CENTRE FOR FORESTRY AND FOREST PRODUCTS**

CONTACT DETAILS:

Leuschnerstrasse 91
D-21027 Hamburg 80
Germany
Tel. No.: (49 40) 7396 2119 / 7396 2120
Fax No.: (49 40) 7396 2480
E-mail: lorenz@holz.uni-hamburg.de

**PROGRAMME CENTRE FOR ICP ON INTEGRATED MONITORING OF AIR POLLUTION EFFECTS ON ECOSYSTEMS
FINNISH ENVIRONMENT INSTITUTE**

CONTACT DETAILS:

P.O. Box 140
FIN-00251 Helsinki
Finland
Tel. No.: (358 9) 4030 0308
Fax No.: (358 9) 4030 0390
E-mail: martin.forsius@ymparisto.fi

**COORDINATION CENTER FOR EFFECTS FOR ICP ON MAPPING OF CRITICAL LEVELS AND LOADS
(PROVIDING ALSO TECHNICAL SUPPORT TO OTHER BODIES UNDER THE CONVENTION) RIVM/CCE**

CONTACT DETAILS:

P.O. Box 1
NL-3720 BA Bilthoven
Netherlands
Tel. No.: (31 30) 274 3048
Fax No.: (31 30) 274 4433
E-mail: j.p.hettelingh@mnp.nl

**MAIN RESEARCH CENTRE FOR ICP ON EFFECTS OF AIR POLLUTION ON MATERIALS, INCLUDING HISTORIC AND CULTURAL MONUMENTS
CORROSION AND METALS RESEARCH INSTITUTE**

CONTACT DETAILS:

Drottning Kristinas väg 48
S-114 28 Stockholm
Sweden
Tel. No.: (46 8) 674 1733
Fax. No.: (46 8) 674 1780
E-mail: johan.tidblad@kimab.com

**PROGRAMME CENTRE FOR ICP ON EFFECTS OF AIR POLLUTANTS ON NATURAL VEGETATION AND CROPS
CENTRE FOR ECOLOGY AND HYDROLOGY**

CONTACT DETAILS:

Bangor Research Unit
Deiniol Road
Bangor LL57 2UP
United Kingdom
Tel. No.: (44 1248) 370 045
Fax No.: (44 1248) 355 365
E-mail: g.mills@ceh.ac.uk

**PROGRAMME CENTRE FOR ICP ON ASSESSMENT AND MONITORING OF ACIDIFICATION OF RIVERS AND LAKES
NORWEGIAN INSTITUTE FOR WATER RESEARCH**

CONTACT DETAILS:

Gaustadalléen 21
NO-0349 Oslo
Norway
Tel. No.: (47 22) 185 100
Fax No.: (47 22) 185 200
E-mail: merete.johannessen@niva.no

METEOROLOGICAL SYNTHESIZING CENTRE - EAST (MSC-E)

CONTACT DETAILS:

Krasina pereulok, 16/2
Moscow, 123056
Russia
Tel. No.: (7 495) 656 35 78
Fax No.: (7 495) 614 45 94
E-mail: msce@msceast.org

METEOROLOGICAL SYNTHESIZING CENTRE - WEST (MSC-W)

CONTACT DETAILS:

Norwegian Meteorological Institute
P.O. Box 43 Blindern
N-0313 Oslo 3
Norway
Tel. No.: (47 22) 963 330
Fax No.: (47 22) 963 050
E-mail: leonor.tarrason@dnmi.no
Chemical Coordinating Centre

NILU

CONTACT DETAILS:

P.O. Box 100
N-2007 Kjeller
Norway
Tel. No.: (47 63) 898 156
Fax No.: (47 63) 898 050
E-mail: kt@nilu.no

CENTRE FOR INTEGRATED ASSESSMENT MODELLING, INTERNATIONAL INSTITUTE FOR APPLIED SYSTEMS ANALYSIS

CONTACT DETAILS:

Schlossplatz 1
A-2361 Laxenburg
Austria
Tel. No.: (43 2236) 807 432
Fax No.: (43 2236) 807 533
E-mail: amann@iiasa.ac.at