



Reporting on global SDG indicator 6.5.2
TEMPLATE of the second cycle for reporting

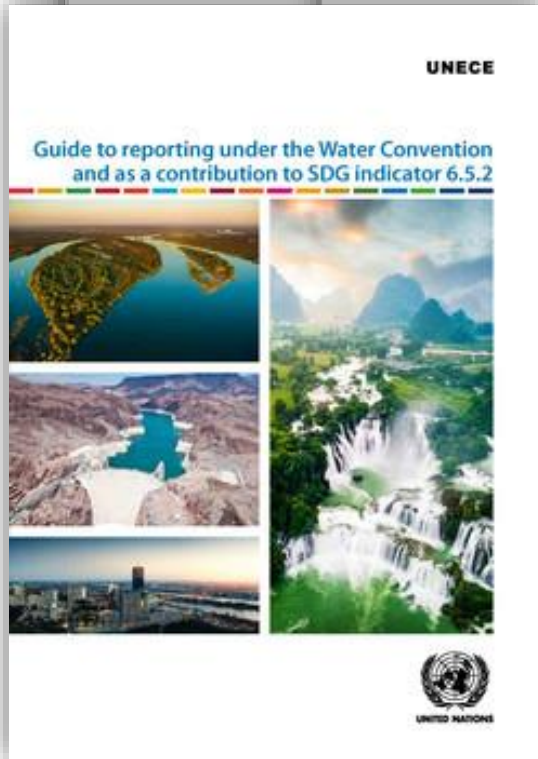
Content of the template

- The template is divided into four parts
- Section I - Calculation
- Section II - Information
- Section III - General
- Section IV - Final

Integrated Monitoring Guide for SDG 6
Step-by-step monitoring methodology for SDG indicator 6.5.2 version "2020"
Final version 2020-01-25

STEP-BY-STEP MONITORING METHODOLOGY FOR
SDG INDICATOR 6.5.2

PROPORTION OF TRANSBOUNDARY BASIN AREA WITH AN OPERATIONAL ARRANGEMENT FOR WATER COOPERATION



| | |
|---|----|
| Indicator 6.5.2 and main definitions | 2 |
| Transboundary River and Lake basins and aquifers management and SDG indicator 6.5.2 | 2 |
| and main definitions | 2 |
| Transboundary aquifers | 4 |
| Linkages to other Reporting Initiatives | 4 |
| State and links with the Convention on the protection and use of transboundary | 4 |
| transboundary lakes | 4 |
| and other Reporting Initiatives | 5 |
| Between monitoring cycles | 6 |
| How to calculate the indicator value | 6 |
| Requirements | 6 |
| Arrangements and their operationality | 7 |
| Criteria | 8 |
| Requirements in data management and quality | 8 |
| Calculation and computation of indicator 6.5.2 | 9 |
| Transboundary River and Lake basins and aquifers | 9 |
| Surface area of each transboundary basin and aquifer, and the total sum | 9 |
| Existing arrangements for transboundary cooperation in water management and verify | 10 |
| Whether they are covered by a cooperation arrangement | 10 |
| Whether the existing arrangements satisfy which criteria for operationality | 11 |
| Final indicator value | 12 |

SDG Indicator 6.5.2

Common difficulties in completing the national reports

Webinars on SDG indicator 6.5.2 supporting countries in preparing national reports for the 2nd reporting exercise

4 June 2020

Alistair Rieu-Clarke
UNECE consultant & Northumbria University



UN WATER

INTEGRATED MONITORING INITIATIVE FOR SDG 6 **SDG INDICATOR 6.5.2**
TRANSBOUNDARY WATER COOPERATION



UNECE



United Nations
Educational, Scientific and
Cultural Organization



Overview

- Calculating the surface area of river and lake basins at the national level
- Determining what constitutes
 - an ‘arrangement’
 - a ‘joint body or mechanism’
 - a ‘joint or coordinated water management plan or similar instrument’
- Reporting basins and sub-basins (section II of template)
- Ensuring consistency throughout the template



SDG INDICATOR 6.5.2
TRANSBOUNDARY WATER COOPERATION



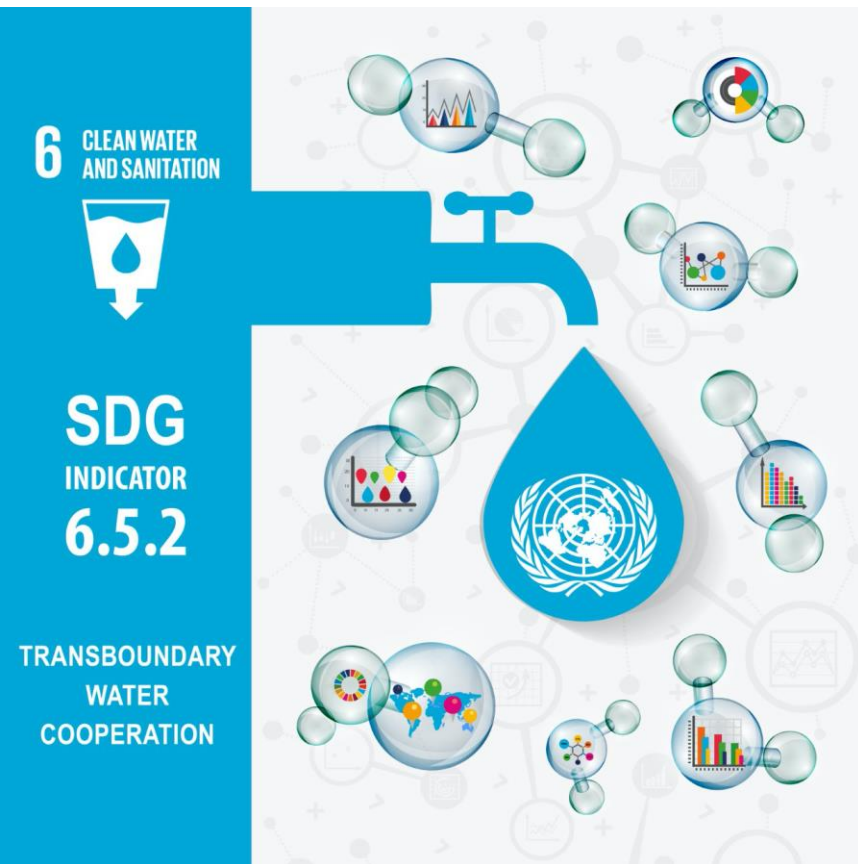
UNECE



United Nations
Educational, Scientific and
Cultural Organization



A quick recap...



Proportion of transboundary **basin area** with an **operational arrangement** for water cooperation

The calculation of the indicator value is based on two main elements:

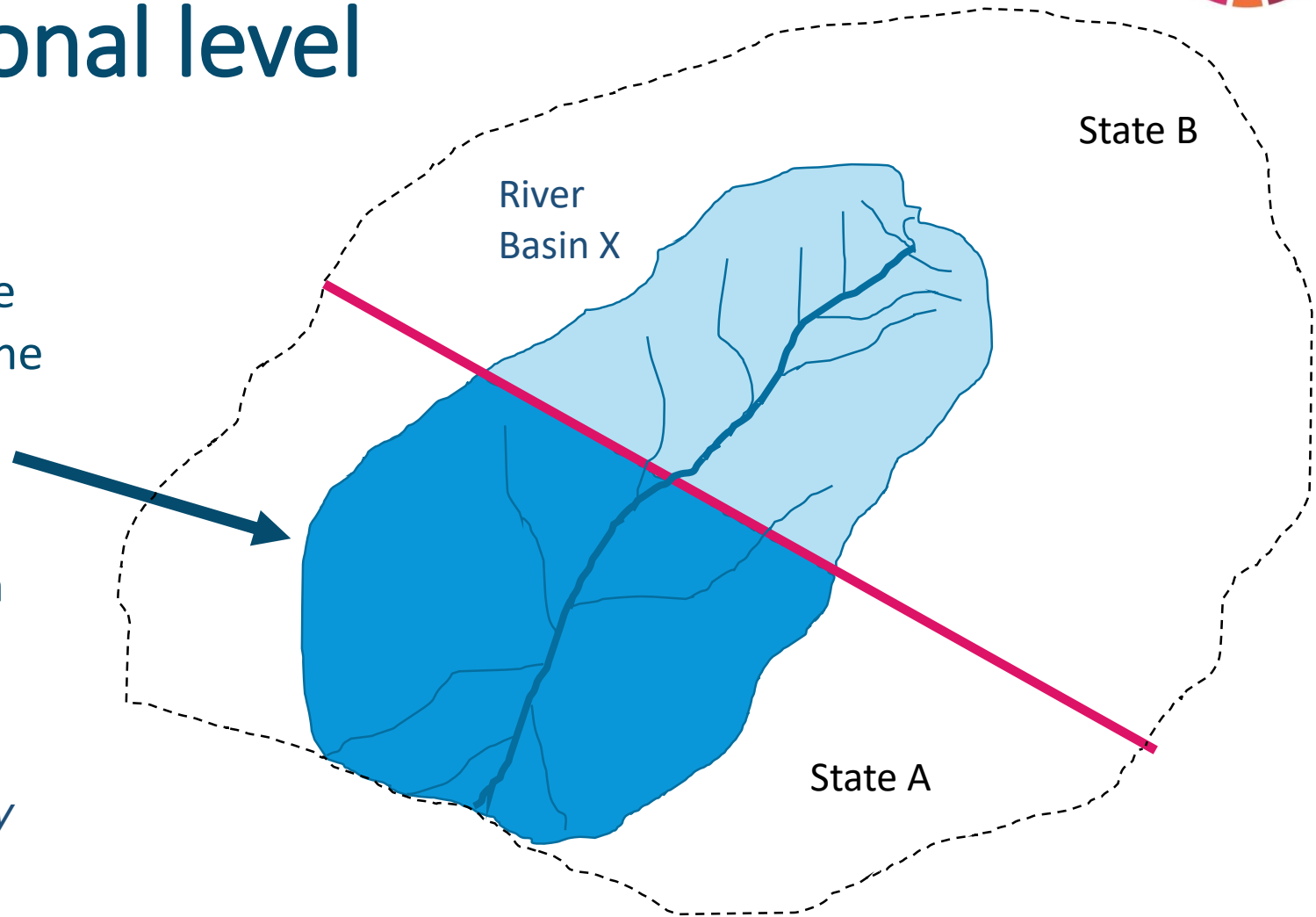
- *the spatial coverage of transboundary basin areas **located in a State**;*
- *a determination of the extent to which these areas are covered by **operational arrangements** for water cooperation.*

(Step-by-Step Monitoring Methodology for SDG indicator 6.5.2, p. 3)



Calculating the surface area of river and lake basins at the national level

- Surface area (in km²) of a basin should be calculated **only** for the part of the basin that is within the territory of the country
- Don't 'double-count' main basin and sub-basins (section I)



(Step-by-Step Monitoring Methodology for SDG indicator 6.5.2, p. 6-7)



What is an 'arrangement'?

- Formal commitments between the Riparian Parties.
- Agreements and arrangements can be called by many different names, e.g. treaty, convention, agreement, exchange of letters, declaration.
- Water provisions may be included in broader agreements on environmental cooperation or economic cooperation

(See Step-by-Step Monitoring Methodology for SDG indicator 6.5.2, p. 3; Guide to Reporting, p.17)



What is an 'operational arrangement'?

- **A joint body or mechanism** (e.g. a river basin organization) for transboundary cooperation exists;
- **Regular (at least once per year) formal communications** between riparian States
- **Joint or coordinated water management vision/plan(s), or similar instrument in place**
- **Regular exchange (at least once per year) of data and information**



What is 'a joint body or mechanism'?

- Several common features:
 - a permanent body;
 - composed of representatives of the riparian States;
 - usually comprised of a decision-making body;
 - usually having a secretariat; and
 - sometimes supplemented by subsidiary bodies
- Could be as simple as regular expert group or focal point meetings
(See Guide to Reporting, pp 26-30)



What are ‘joint or coordinated water management plan(s), or similar instruments’?

- Similar instruments include action plans, common strategies, or joint objectives/vision
- Should signal progress in the implementation of an arrangement and should NOT therefore be contained within the arrangement itself but adopted thereafter, e.g. a decision by the joint body or mechanism.
- They may cover a range of topics, e.g. IWRM, climate change, flood management

(See Step-by-Step Monitoring Methodology for SDG indicator 6.5.2, p. 3; Guide to Reporting, p. 33-35)



How to structure the reporting of individual basins and sub-basins (section II)

- A lot of diversity in the basins and arrangements that countries may have in place, e.g.,
 - One basin shared with one other State
 - Multiple basins, with multiple States, and arrangements in place at multiple levels (basin, bilateral, sub-basin...)
- The simple scenario: several basins covered by several arrangements
 - Complete section II once for each basin
- For other scenarios see *Guide to Reporting*, p. 17.



How to ensure consistency throughout the template?

- Section I asks countries to list transboundary basins/ sub-basins covered by an operational arrangement, as well as whether criteria for operability have been met
- Answers supplemented by responses to Section II
 - Q2 Agreements and arrangements
 - Q3 Joint body or mechanism
 - Q4 Management plans and similar
 - Q6 Exchange of data and information
- Make sure answers to Q2,3,4 & 6 (Section II) are consistent with responses in Section I!



Thanks for listening!

6.5.2 Help Desk

transboundary_water_cooperation_reporting@un.org
transboundary_water_cooperation_reporting@unesco.org

Further information

UNECE: www.unece.org/water/transboundary_water_cooperation_reporting.html

UNESCO: <https://en.unesco.org/themes/water-security/hydrology>

UN-WATER SDG6 monitoring: www.sdg6monitoring.org/indicator-652

UN-WATER SDG6 data portal: www.sdg6data.org/indicator/6.5.2

Reporting on global SDG indicator 6.5.2
TEMPLATE of the second cycle for reporting

Content of the template

The template is divided into 6 sections:

- Section I - Context
- Section II - Introduction
- Section III - General information
- Section IV - Findings
- Section V - Conclusions
- Section VI - Recommendations

Country name: [fill in]

Integrated Monitoring Guide for SDG 6
Step-by-step monitoring methodology for SDG indicator 6.5.2 version "2020"
Final version 2020-01-25

STEP-BY-STEP MONITORING METHODOLOGY FOR
SDG INDICATOR 6.5.2

PROPORTION OF TRANSBOUNDARY BASIN AREA WITH AN OPERATIONAL ARRANGEMENT FOR WATER COOPERATION

CONTENT

| | |
|--|----|
| Definitions | 2 |
| Water management and SDG indicator 6.5.2 | 2 |
| Water | 2 |
| Water | 4 |
| Reporting Initiatives | 4 |
| Convention on the protection and use of transboundary | 4 |
| Initiatives | 5 |
| Water | 6 |
| Indicator value | 6 |
| Operationality | 7 |
| Water and quality | 8 |
| Indicator 6.5.2 | 9 |
| Water and Lake basins and aquifers | 9 |
| Each transboundary basin and aquifer, and the total sum | 9 |
| For transboundary cooperation in water management and verify | 10 |
| Cooperation arrangement | 10 |
| Arrangements satisfy which criteria for operationality | 11 |
| | 12 |
| | 12 |

UNECE

Guide to reporting under the Water Convention
and as a contribution to SDG indicator 6.5.2

UNITED NATIONS



SDG INDICATOR 6.5.2
TRANSBOUNDARY WATER COOPERATION



UNECE



United Nations
Educational, Scientific and
Cultural Organization



Written questions

- If there are many very small transboundary rivers and creeks apart from big transboundary river system, do we need to consider all of them for calculating total transboundary river basin area?
- ... internet is a great challenge, so how are we going to collect the data for this year
- What's the most important barrier to the policies of achieving SDG indicator 6.5.2?
- How SDG 6.5.2 would impact the non-cooperating attitude of conflicting countries over water resource sharing?



SDG INDICATOR 6.5.2
TRANSBOUNDARY WATER COOPERATION



UNECE



United Nations
Educational, Scientific and
Cultural Organization



- How diplomatic relationship is associated with this indicator?
- Is it essential or mandatory to sign the UNWC 1997 for Transboundary cooperation between coriparian countries?
- How can we contribute effectively to adding the youth in achieving the goal of awareness of their own in order to contribute to society with their energy?
- How we can improve water supply's in urban communities?
- What is the current status of developing countries in achievement of SDG 6



SDG INDICATOR 6.5.2
TRANSBOUNDARY WATER COOPERATION



UNECE



United Nations
Educational, Scientific and
Cultural Organization