

# Making risk related technical data more accessible to planners

Rachel McCann – Senior Policy Advisor  
Chemicals, Explosives and Microbiological Hazards Division, HSE



Helping  
Great Britain  
**work well**

Find out more  
by joining the  
conversation



# Land Use Planning in the UK – HSE's Role

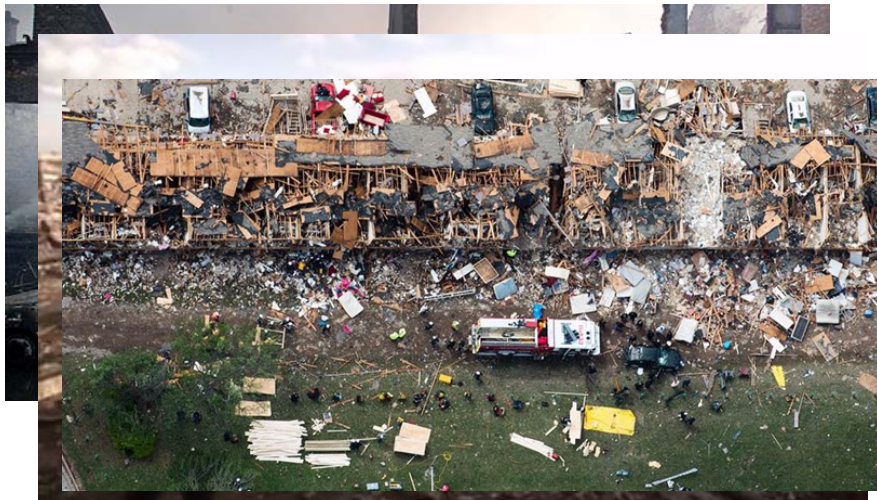


- UK's land use planning system is predominantly based on the Seveso Directives
- Planning law is 'devolved' and decision making is at local level
- We are not decision makers but our advice is given a lot of weight
- Do planners understand our advice and how can we ensure they do ?

# Importance of land use planning in disaster risk reduction



- Land Use Planning is a key part of disaster risk reduction
- Our economies want and need the products of hazardous installations but local authorities have obligations to build houses, provide schools, roads and infrastructure



- But they also have a duty to protect their local population
- To do this they must understand the technical advice they receive
- But those who provide technical advice also need to understand the other pressures on planners

# How HSE engages on technical advice



- Most engagement with HSE on planning decisions is straightforward
- Most engagement is carried out using our 'Web App' – a visual tool that steers developers and decision makers through the process and towards other sources of information
- We publish guidance on specific topics and our methodologies to make advice as clear and transparent as possible
- Encouraging early engagement is a key part of our strategy
- We also offer commercial services to facilitate discussion and understanding of advice
- All seeking to avoid cost planning enquiries

# Example 1 – Oval Cricket Ground

---

- HSE was consulted on a proposal to redevelop a spectator area at the Oval Cricket Ground in the vicinity of a Gas-Holder
- HSE ‘advised against’ but the authority decided to proceed leading to an inquiry.
- The proposed development was permitted and HSE received some criticism.
- An internal review identified the importance of;
  - Communicating more widely with a range of stakeholders on the nature of HSE’s case
  - Re-affirm and clarify the rational behind HSE’s policies
  - Having a communication in place early on in an inquiry

# Example 2 – The ‘Planning Balance’



- A local authority wished to redevelop and expand an existing school in the vicinity of a large chemical plant
- HSE ‘advised against’ but the authority decided to proceed leading to an inquiry
- An agreement on the development was reached but demonstrated that both sides needed to understand each other’s advice and position.
- An internal review identified the importance of;
  - Communication with local authorities with significant major industry and populations
  - Using stakeholder forums to share HSE thoughts generally and in advance of specific applications