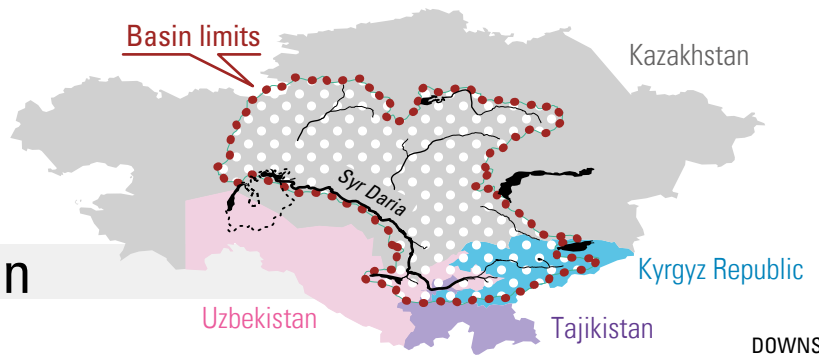


River length
3,019 km
River basin area
150,100 km²

Altitude range
55 - 7,000 m
Average annual rainfall
100 - 800 mm



Syr Daria Basin

UPSTREAM

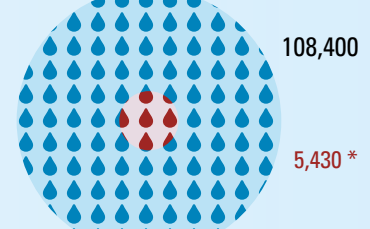
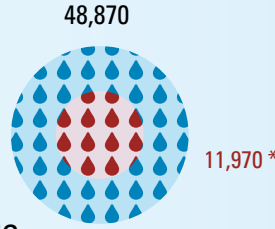
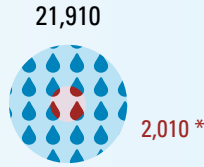
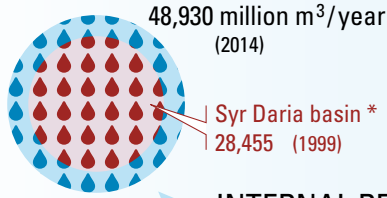
DOWNSTREAM

Kyrgyz Republic

Tajikistan

Uzbekistan

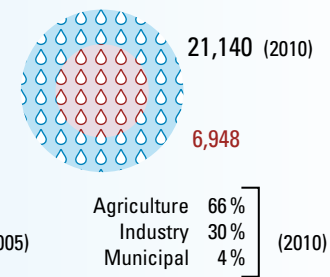
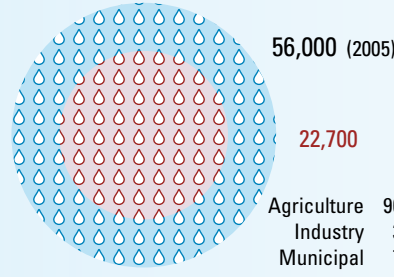
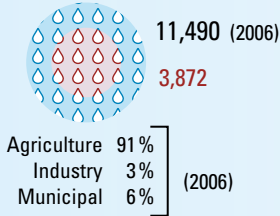
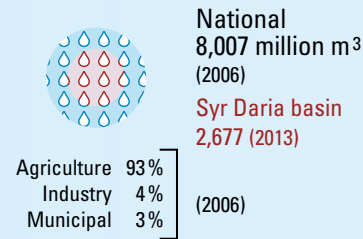
Kazakhstan



INTERNAL RENEWABLE WATER RESOURCES

* Surface, groundwater and return flow

WATER WITHDRAWAL



3.8 million kW
Hydropower 3 (79%)
Fossil fuels 0.8 (21%)

5.1 million kW
Hydropower 4.7 (92%)
Fossil fuels 0.4 (8%)

12.6 million kW
Hydropower 1.7 (14%)
Fossil fuels 10.8 (86%)

17.8 million kW
Hydropower 2.3 (13%)
Fossil fuels 15.6 (87%)

INSTALLED ELECTRICITY GENERATING CAPACITY

105,913 km² (2012)
of which 21% is potentially irrigated

48,750 km²
of which 32% is potentially irrigated

266,900 km²
of which 18% is potentially irrigated

2,079,750 km²
of which 2% is potentially irrigated

AGRICULTURAL LAND

Uzbekistan

Kazakh.

Kyrgyz Republic

Tajikistan

56,796 million

231,876 million

7,226 million

8,508 million

NATIONAL GROSS DOMESTIC PRODUCT (current USD, 2013)

Kyrgyz Republic
5.7 million
Syr Daria basin
3.2 million (7%)

Tajikistan
8.2 million
1.7 million
(21%)

Uzbekistan
30.3 million
15.5 million
(51%)

Kazakhstan
17 million
3.4 million
(20%)

POPULATION

Sources: Scientific-Information Center of the Interstate Commission for Water Coordination of Central Asia (SIC ICWC), 2013; FAO; US EIA; World Bank, 2015.