

REPUBLIC OF SRPSKA GOVERNMENT
Ministry of Agriculture, Forestry and Water Management

FEDERATION OF B&H GOVERNMENTS
Ministry of Agriculture, Water Management and Forestry



Zagreb, mart 2014.

GENERAL DATA-Republic of Srpska

Total area 2.446.780 ha

Total agricultural land 1.252.311 ha or
51.2%

Arable land 893.540 ha

Arable land per capita 0,64 ha

Only 0,20 ha/capita in use at the moment

The most perspective agricultural land:
158.000 ha :

Ø134.400 ha Sava river basin

Ø23.600 ha Trebišnjica river basin

PAST SITUATION:

3.439 ha in Sava river basin

3.823 ha in Trebišnjica river basin

Total area 7.262 ha or 4.46%

PRESENT SITUATION:

1.500 ha in Sava river basin

200 ha in Trebišnjica river basin

Total area 1.700 ha or 1.076%

(world average cca 17.0%)



GENERAL DATA- Federation of Bosnia and Herzegovina

Total agricultural land 1.145.000 ha

Arable land 719.000 ha or 62,8%

Arable land per capita 0,31 ha

only 0,2 % of arable land is irrigated

362,5 ha in Sava river basin

1 250 ha in Adriatic sea district

GOALS-STRATEGY AND PRIORITIES

STRATIGIC GOAL: To provide water of appropriate quality and quantity

- Sustainable irrigation

Limitation: protection from water, inappropriate size of land, water quality, water quantity, water asociation

First phase-10 years

Municipality	Field	Area (ha)
1.Bijeljina	Bijeljina-West	3.158
2.Pelagićevo	Pelagićevo	274
3.Kozarska Dubica	Dubička Ravan	1.000
4.Srbac	Sitneši	491
5.Ljubinje	Ljubinje Field	400
6.Gradiška	Lijevče Field-Gradiška	1.253
7.Šamac	Lugovi	2.351
8.Laktaši	Lijevče Field-Laktaši	1.500
Ukupno:		10.427

End-Total arable land under irrigation 79.907 ha

ONGOING PROJECT

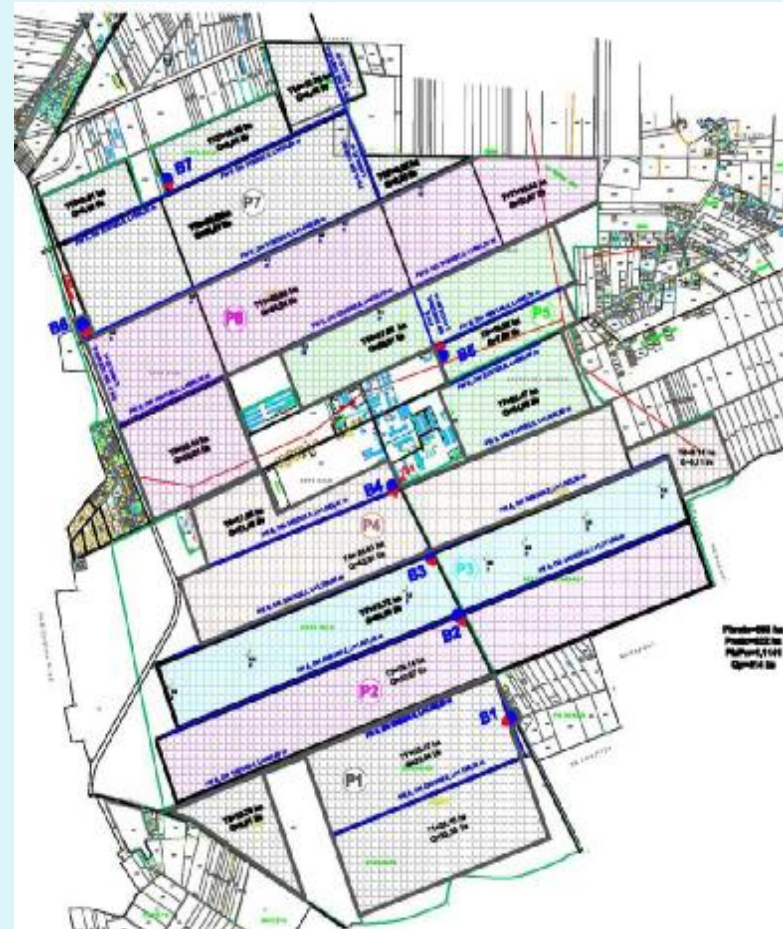
World Bank assistance to B&H for
Irrigation Development Project (IDP)

Target investment:

- rehabilitation
- modernization
- improvement of existing irrigation schemes
- new systems

Republic of Srpska (20 mil.USD):
rehabilitation (5000 USD/ha)

- Bijeljina (Novo Selo - neto area 622 ha)
- Pelagićevo (Gojkovo i Stakića Field – neto area 212 ha)



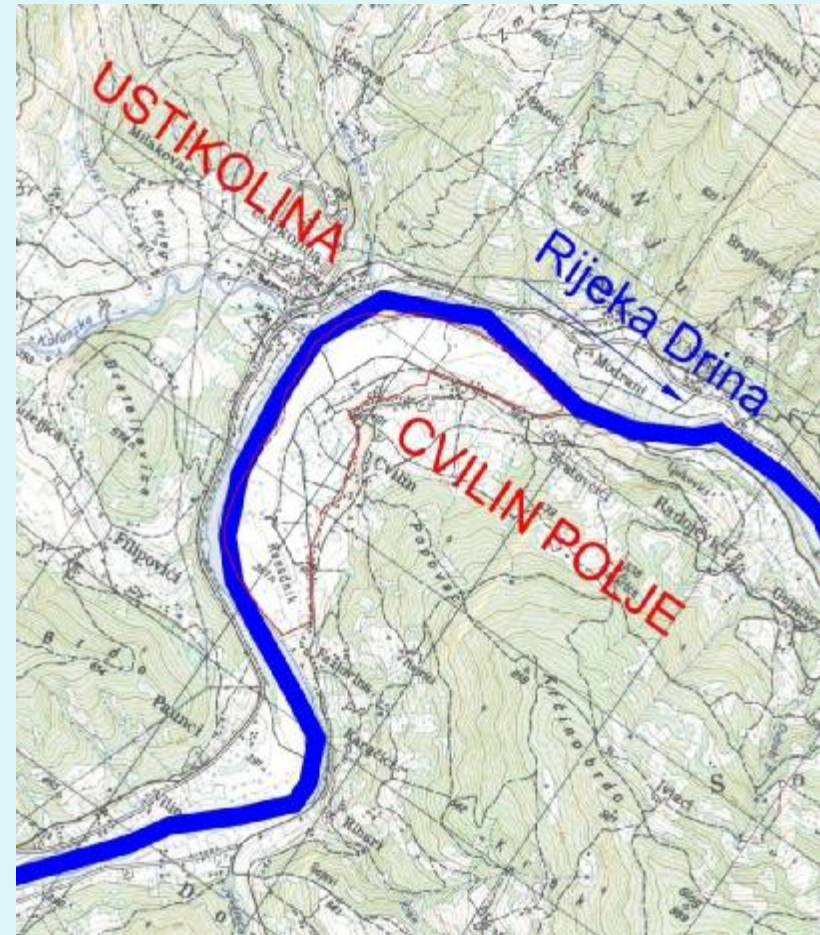
ONGOING PROJECT

Federation BH (Sava River Basin)

- Goražde (net area 65 ha; water demand 40 l/s)
- Foča-Ustikolina (net area 88 ha; water demand 22,25 l/s)
- Capital cost for the project 13,300 US\$/ha
- Beneficiary 385 households



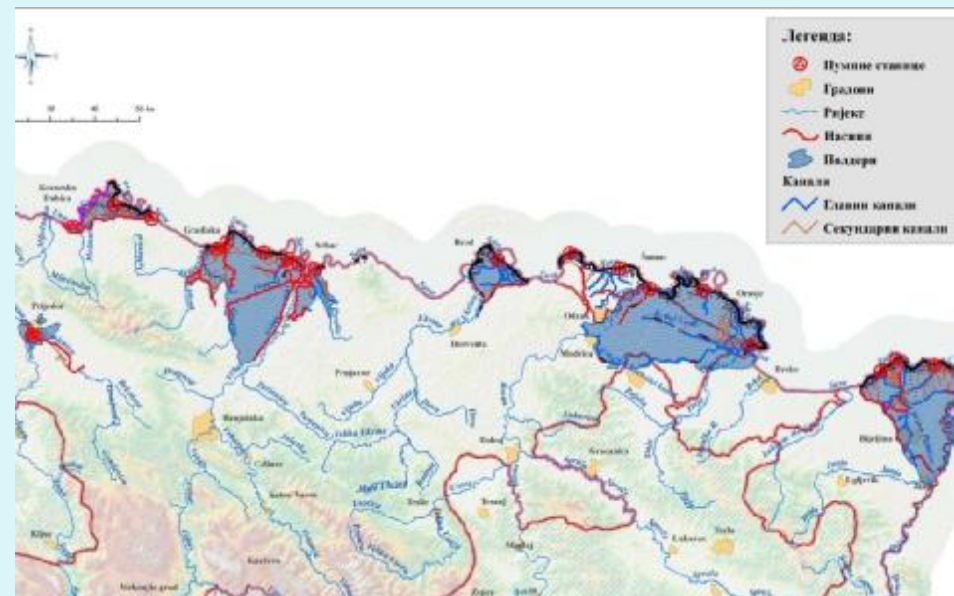
PROJECT AREA- Goražde and Foča -Ustikolina



PROTECTION FROM WATER

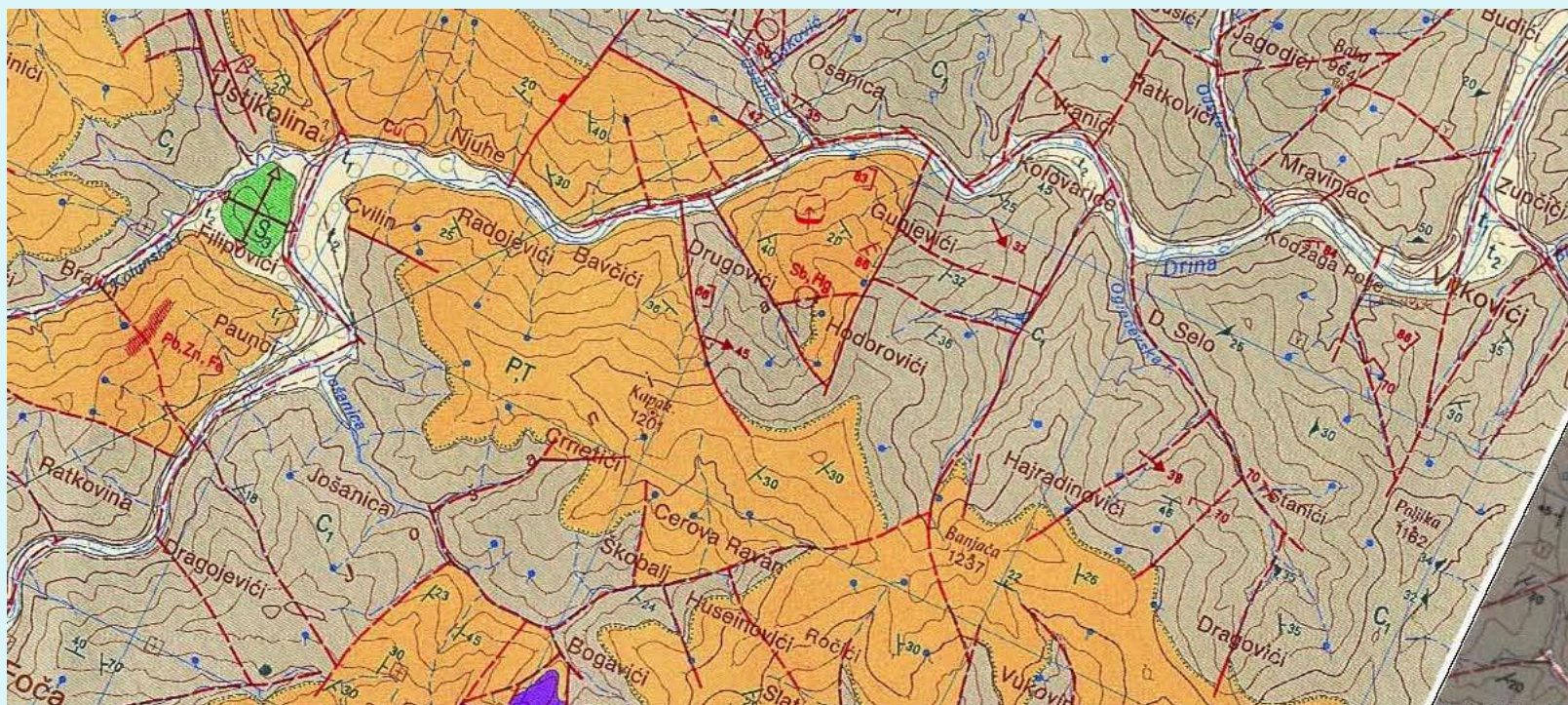
90.000 ha arable land is under protection from water:

- External water (rehabilitation, reconstruction, building embankments)
- Internal water (drainage thru channels, reconstruction and building pump station)



Posavina

Soli map in project areas



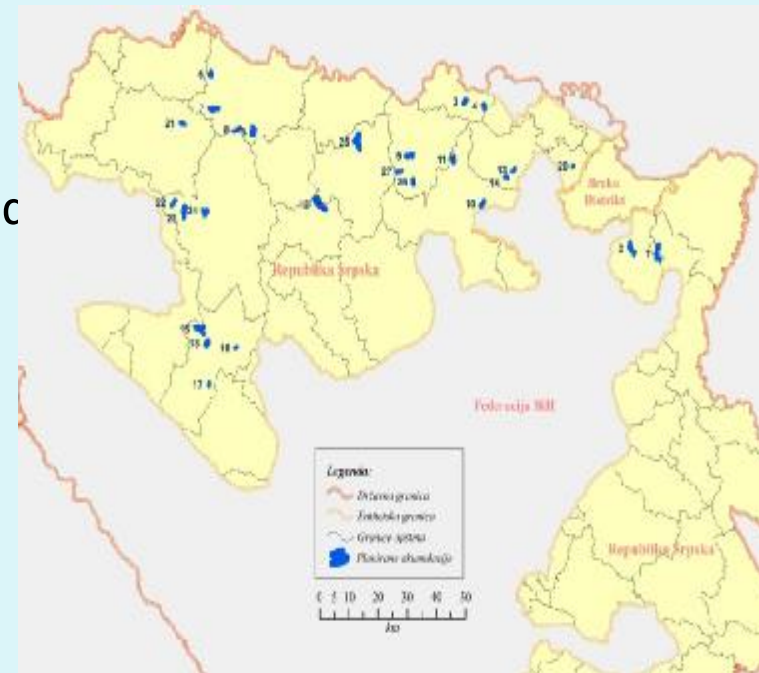
WATER QUANTITY

Total amount of required water is 293.990.144 m³/year or 42,5 m³/s

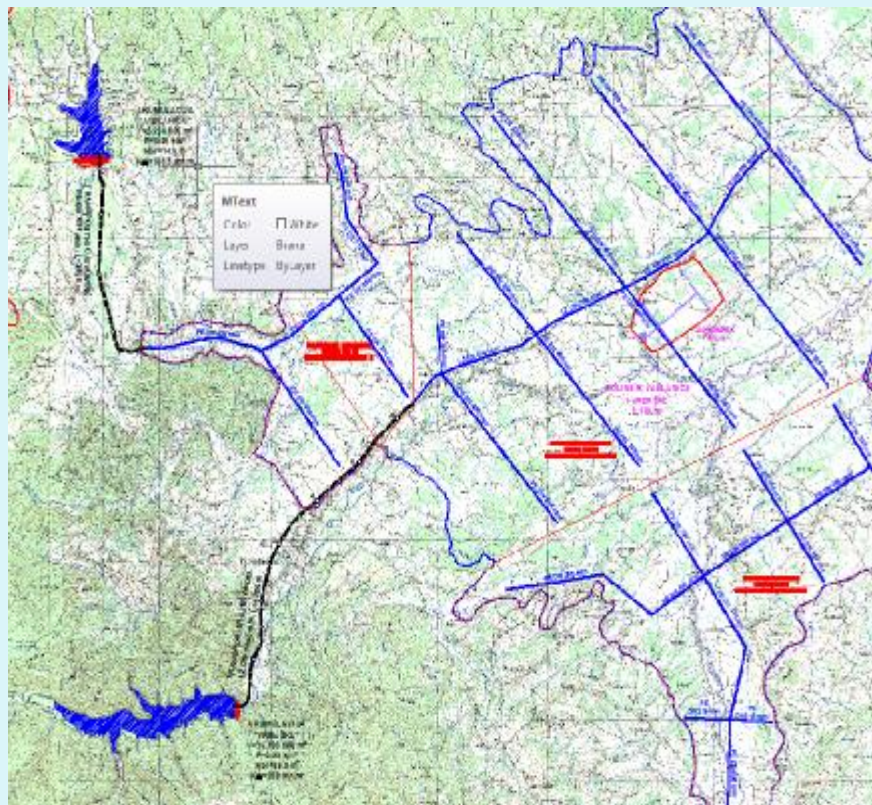
To provide enough water (summer) it has been proposed 28 accumulation with volumen of 140.000.000 m³ or 41.8% of total needs

PROPOSAL:

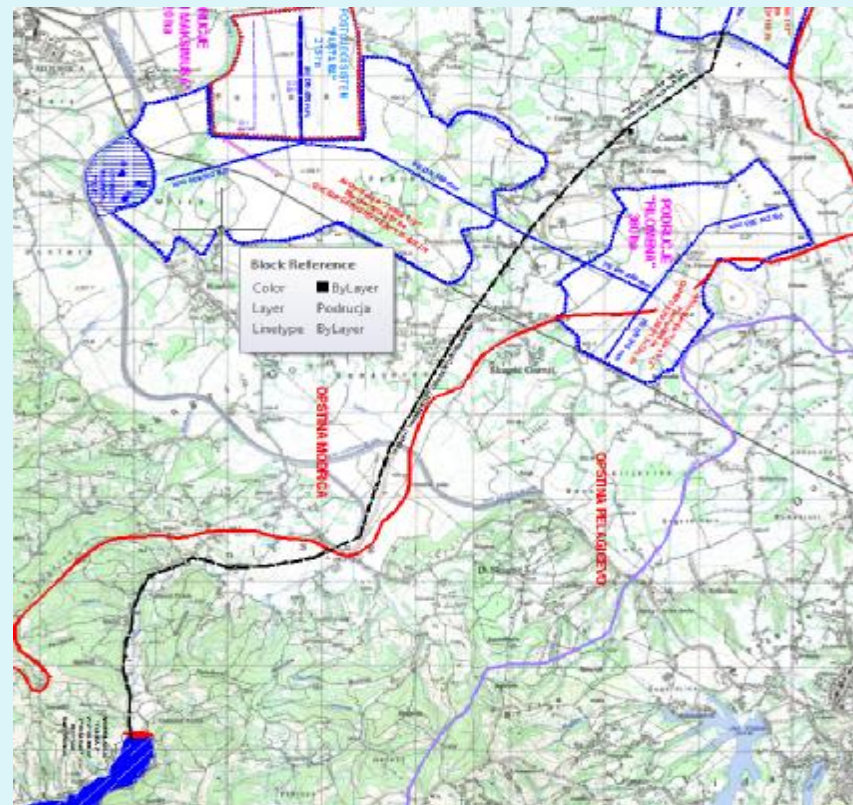
- Gradiška area- r. Jablanica and r.Vrbaška
- Posavina area-r.Tolisa
- Prijedor area-r.Milosavka,r.Gomjenica and r. Subotica
- Kozarska Dubica-r.Rakovica
- Ljubinsko polje



Gradiška area

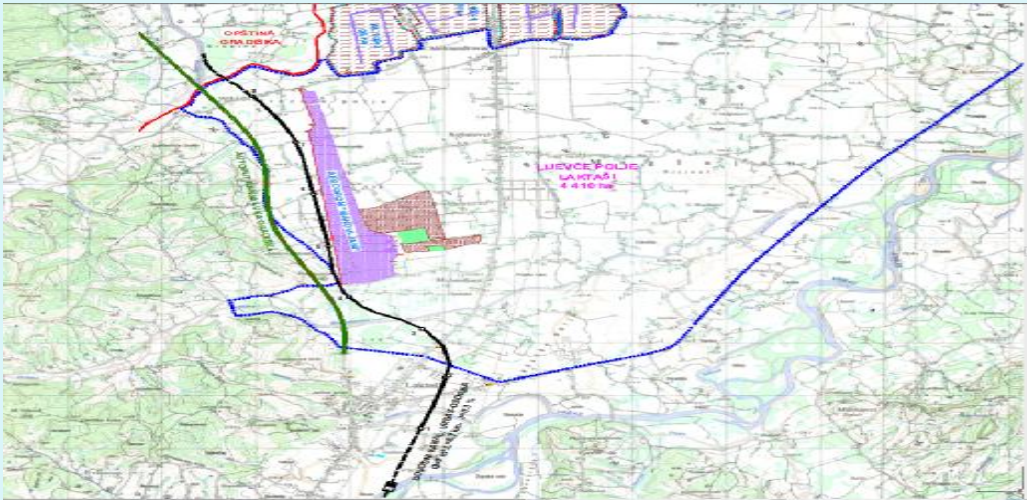


Posavina area

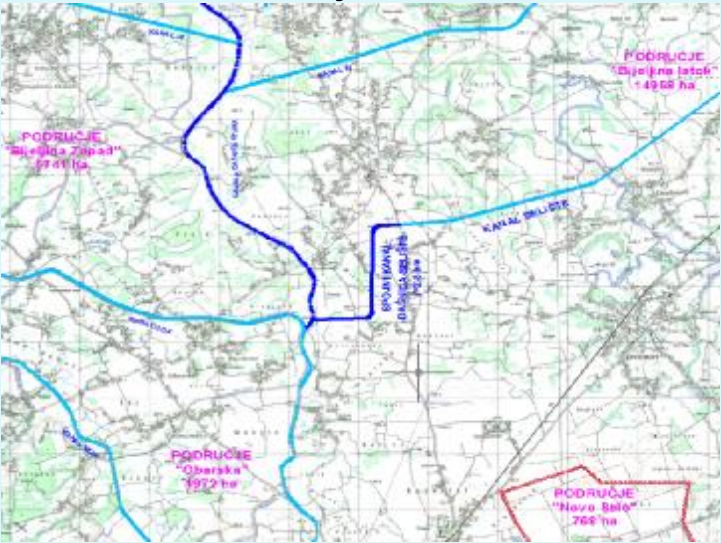


CHANNEL NETWORK

Polder Lijevice Field



Polder Semberija



Polder Ivanjsko Polje



WATER QUALITU

Water protection:

- Point source (urban area, industry, farms)
- Difuse pollution (agriculture-pesticides, erosion, hidrological regime, hidromorfological alteration)

Legal needs-Water Low: Class III for irrigation

Water monitoring



THANK YOU