



Methane to Markets



UNITED NATIONS
ECONOMIC COMMISSION
FOR EUROPE



**WORLD COAL
INSTITUTE**

Cooperative Project on Methane Capture and Use to Improve Mine Safety

***Best Practice Guidance for
Effective Methane Drainage
and Use at Coal Mines***



Project Background



- **3rd Session of AHGE – Agreed to review legislation and regulations pertaining to CMM drainage & use**
 - Suggestion that the coal industry lacks principles-based good practice guidance
- **4th Session of AHGE – Agreed to undertake development of a best practice guidance**
- **Approved by the Committee on Sustainable Energy at its 17th Session**



Lead Organizations

- **Methane to Markets Partnership**

International partnership to further CH₄ recovery and utilisation; 30 countries & EU

- **UN Economic Commission for Europe**

Regional Commission for N. America, Europe, FSU, Turkey

- **World Coal Institute**

International coal industry association representing producers and regional associations

Public-Private-Multilateral Partnership

Project Goal



‘Support safer mining practices to reduce fatalities, injuries and property losses, whilst also encouraging use of the CMM to reduce greenhouse gas emissions and use otherwise wasted energy resources’

Project aims to:

- Strive toward goal of zero fatalities, injuries and property losses
- Demonstrate the global coal industry’s commitment to mine safety, climate change mitigation, corporate social responsibility and good citizenship
- Establish an industry-to-industry dialogue and network between the industries from the developed economies and those in the emerging economies
- Create the necessary linkage between the industry and government/regulatory officials
- Link effective CMM capture as a part of an effective risk management portfolio

Complementary, Not Duplicative



Number of bilateral and multilateral initiatives to support improved mine safety

- UNDP – Strengthening Coal Mine Safety Capacity in China
- ILO – Code of Practice on Safety and Health in Underground Coalmines
- APP – Coal Mine Health and Safety

Industry lacks set of recommended principles and standards for methane recovery and utilisation

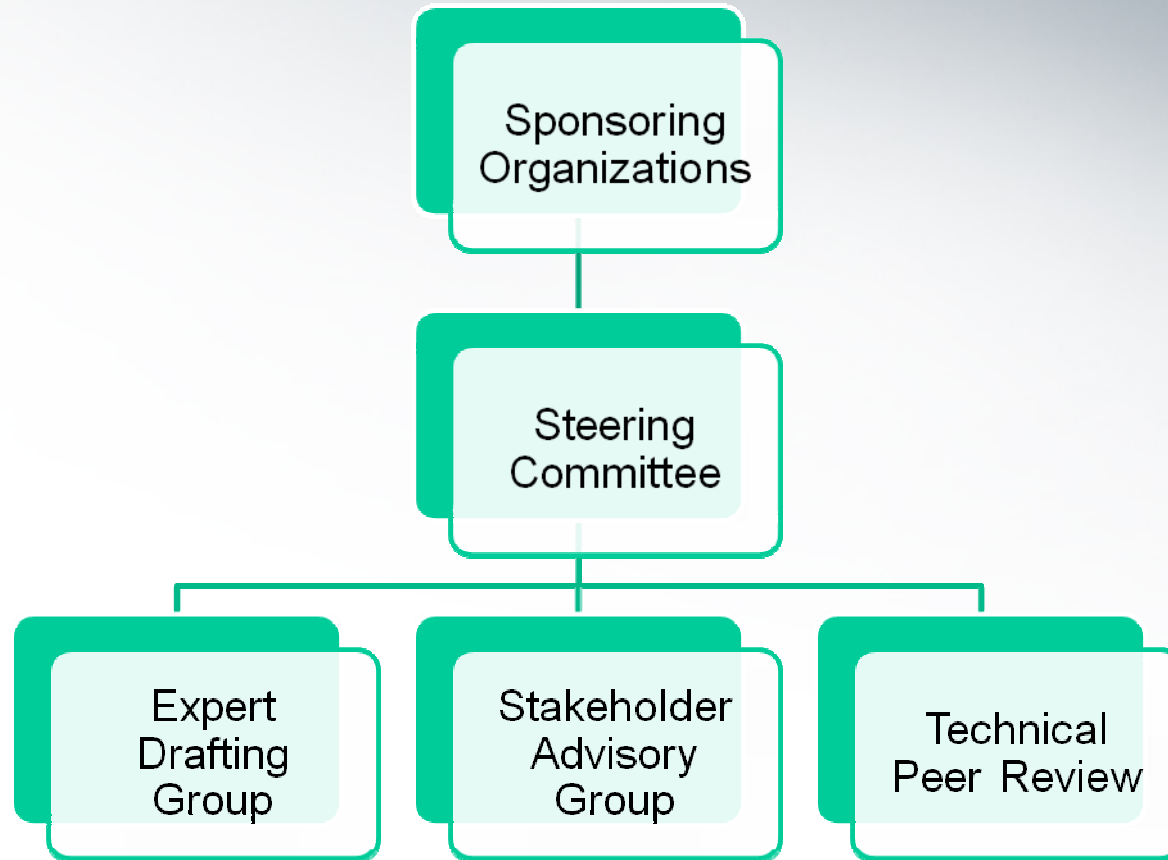
Audience: mine operators, regulators, government officials and technical professionals



Deliverables

- **Publication of best practices guidance on methane drainage and utilisation**
 - Detailed objectives and principles
 - NOT prescriptive
 - NOT a technical manual
 - References respected technical manuals
 - Chapters can also be stand-alone documents
 - Available in multiple languages
- **Companion to reprint of EC “Firedamp Drainage”**
- **Workshop / seminar series: Add value and disseminate findings**

Structure



Roles



- **Sponsoring Organizations**
 - Support development, publication and outreach
- **Steering Committee**
 - Overall responsibility for governance, direction and vision
- **Expert Drafting Group**
 - Small team of noted technical experts in the field of methane capture and use responsible for developing the initial draft document
- **Stakeholder Advisory Group**
 - Ensure that document is accessible to policymakers and other stakeholders and that it successfully delivers the key messages
- **Technical Peer Review Group**
 - Review for technical accuracy and editorial completeness

Steering Committee



- **Meade Harris**
 - World Coal Institute
- **Pamela Franklin**
 - US EPA & Co-Chair Coal Subcommittee of M2M
- **Roland Mader**
 - Vice-Chair UNECE Ad Hoc Group of Experts on CMM
- **Ray Pilcher**
 - Chair UNECE Ad Hoc Group of Experts on CMM
- **Carlotta Segre**
 - Secretary, UNECE AHGE on CMM
- **Clark Talkington**
 - Sindicatum Carbon Capital (formerly Secretary, AHGE on CMM)

Expert Drafting Group



- **Dr. Bharath Bell**
 - Anglo American PLC
- **Dr. David Creedy**
 - Sindicatum Carbon Capital
- **Dr. Erwin Kunz**
 - DMT
- **Mr. Mike Pitts**
 - GreenGas International
- **Dr. Hilmar von Schoenfeldt**
 - Petron Resources
- **Dr. Pramod Thakur**
 - CONSOL Energy

Stakeholder Advisory Group



- **Mr. Yuriy Bobrov**
 - Assn of Mining Towns of Donbass (Ukraine)
- **Mr. Graeme Hancock**
 - World Bank
- **Mr. Martin Hahn**
 - ILO
- **Ms. Hu Yuhong**
 - State Administration for Worker Safety (China)
- **Mr. Sergei Shumkov**
 - National Mining Research Center and Skochinsky Mining Institute (Russia)
- **Mr. Ashok Singh**
 - Central Mine Planning & Design Institute (India)

Invitations extended to representatives from Australia, Japan and Kazakhstan, but unable to participate in this meeting

Timeline



- **Oct/Nov 2008**
 - Agreed by AHGE on CMM
 - Expert Drafting Group formed
- **Dec. 2008**
 - Steering Committee & Expert Drafting Group kick-off meeting, Beijing
- **2Q 2009**
 - 1st draft report completed by Drafting Group & circulated for comment to Technical Review Group
 - 2nd Meeting of Steering Cmte. & Drafting Group, London
- **3Q 2009**
 - 2nd draft of report completed by Drafting Group for review by Steering Cmte
 - 3rd draft of report completed by Drafting Group and circulated to Stakeholder Advisory Group
- **4Q 2009**
 - Report presented to AHGE on CMM and comments received from Stakeholder Advisory Group
 - Technical peer review
- **1Q-2Q 2010**
 - Final editing
 - Publication of report
- **2Q-4Q 2010**
 - Launch of report and dissemination
 - Associated workshops, seminars as appropriate



Methane to Markets



UNITED NATIONS
ECONOMIC COMMISSION
FOR EUROPE



**WORLD COAL
INSTITUTE**

Thank you

Questions and comments?

