



Pathways to Sustainable Energy

Stakeholder Consultation and Information Workshop:
Preliminary Modeling Results & Policy Scenario
Scoping

25 September 2018, Geneva



Project Overview

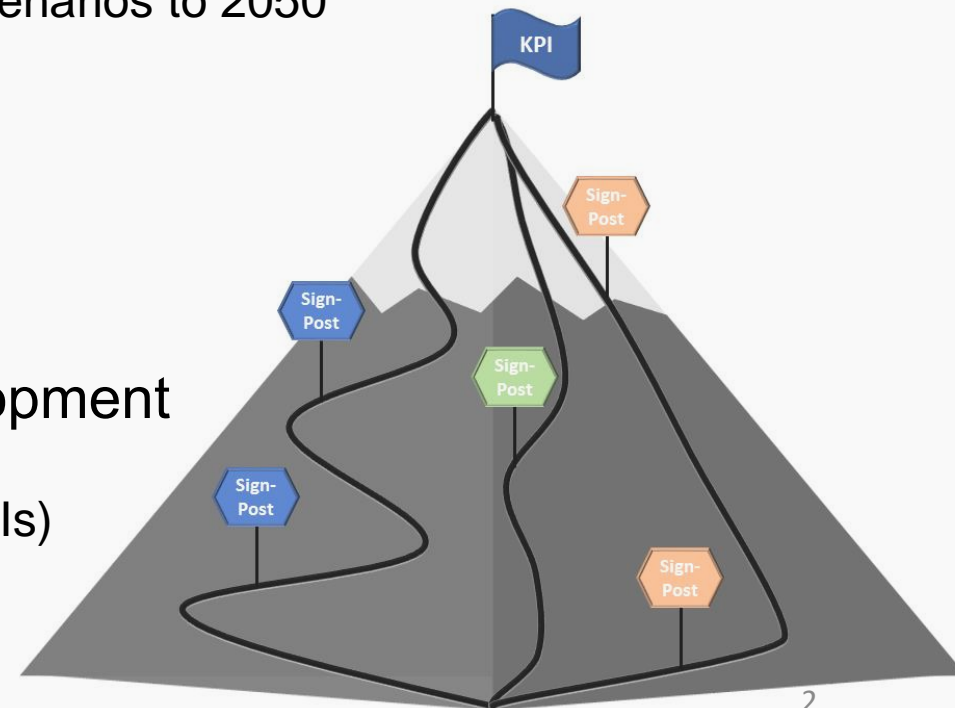
Pathways to Sustainable Energy

ENERGY

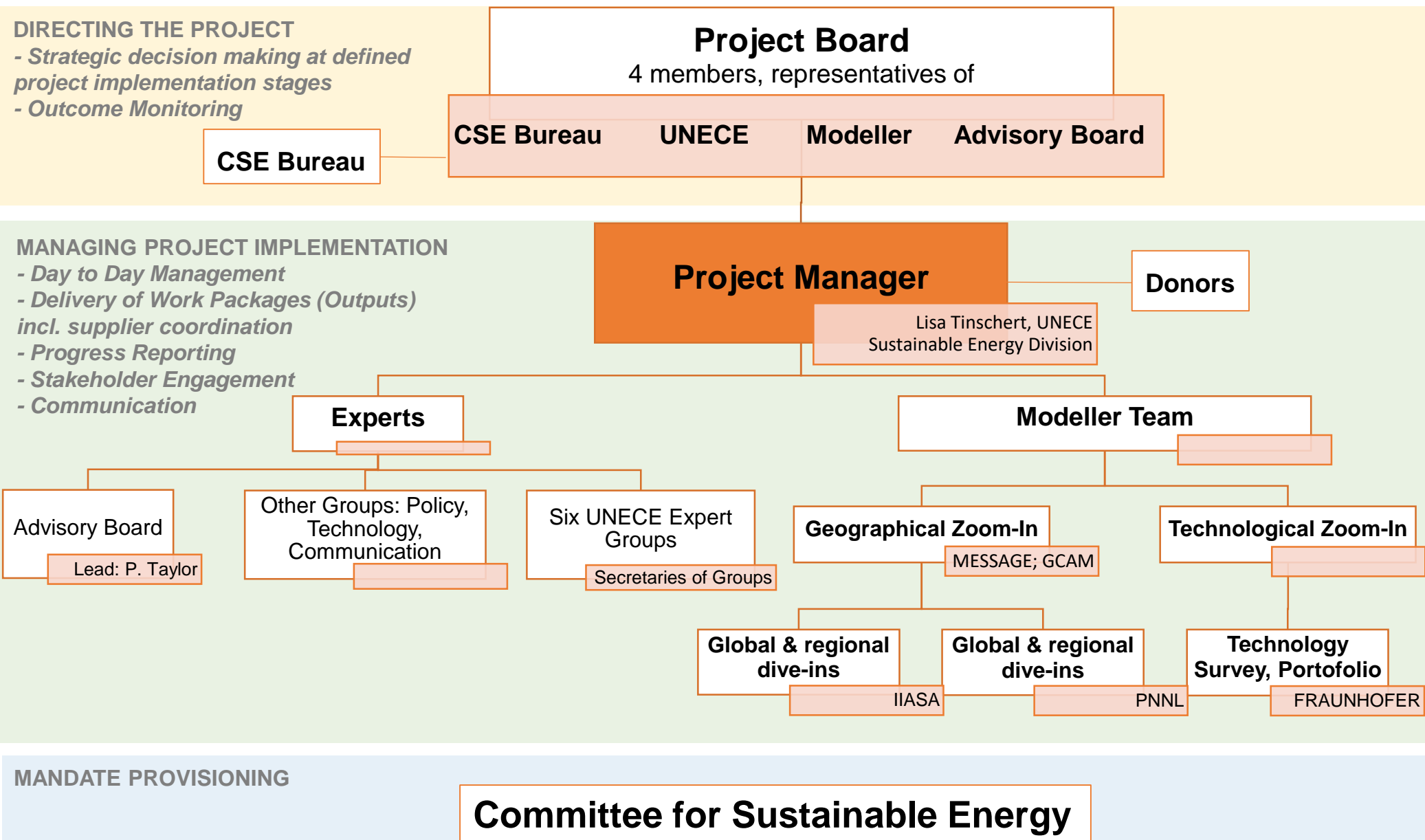


How can the UNECE Region attain Sustainable Energy (SE)?

- **Current Phase:** May 2017 – Oct 2019 (further phases planned)
- **Outputs**
 - Pathways and Scenario Development
 - Sub-regional modelling of SE scenarios to 2050
 - Policy and technology options
 - Policy dialogue
 - Adaptive policy pathways
 - Policy dialogues
 - Sub-regional workshops
 - “Early-warning system” development
 - SE Targets
 - Key Performance Indicators (KPIs)
 - Signposts



Stakeholder Community: Pathways to Sustainable Energy



Research Questions

Draft Deep Dives & Case Studies* (Technology, Policy, Regional)



ENERGY

Focal question: How can countries attain sustainable energy by 2050?

I What is the optimal energy-mix for different sub-regions within the UNECE region in order to help achieve the 2030 Agenda and create a sustainable energy system?

- Energy mix; Role of sub-regional energy trade / Regional cooperation; Country leadership

II What can be drivers for the transition towards a sustainable energy system?

- Policies; Technologies; Infrastructure; Finance / Investments; Business Models

III How to track progress towards achieving and for maintaining a sustainable energy system?

- Long-term performance goals; signposts, „early warning“ system

*Case Study: Further analysis of an existing national, sub-regional, sectoral case; Deep Dive: Further analysis of modeling results as part of a research question.

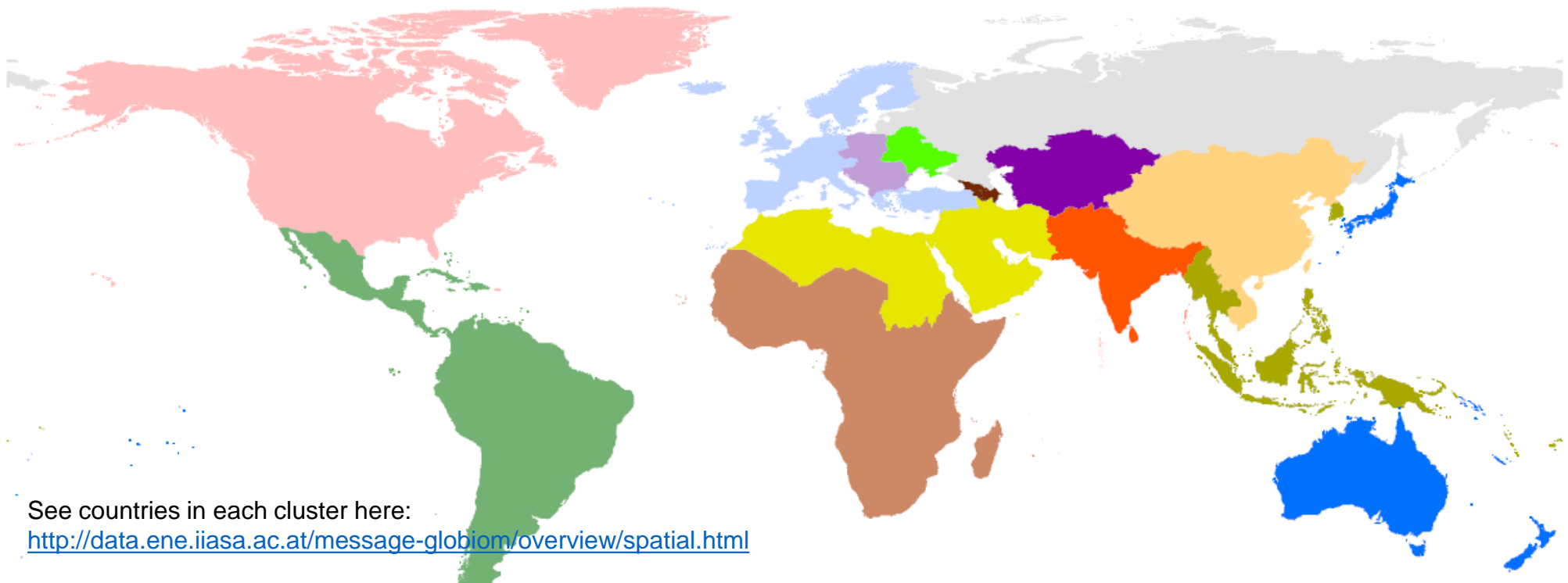
Sub-Regional Modeling and Analysis

Define particular areas of interest in sub-regions

ENERGY



- Global Modelling
 - UNECE Modelling
 - Regional subsets



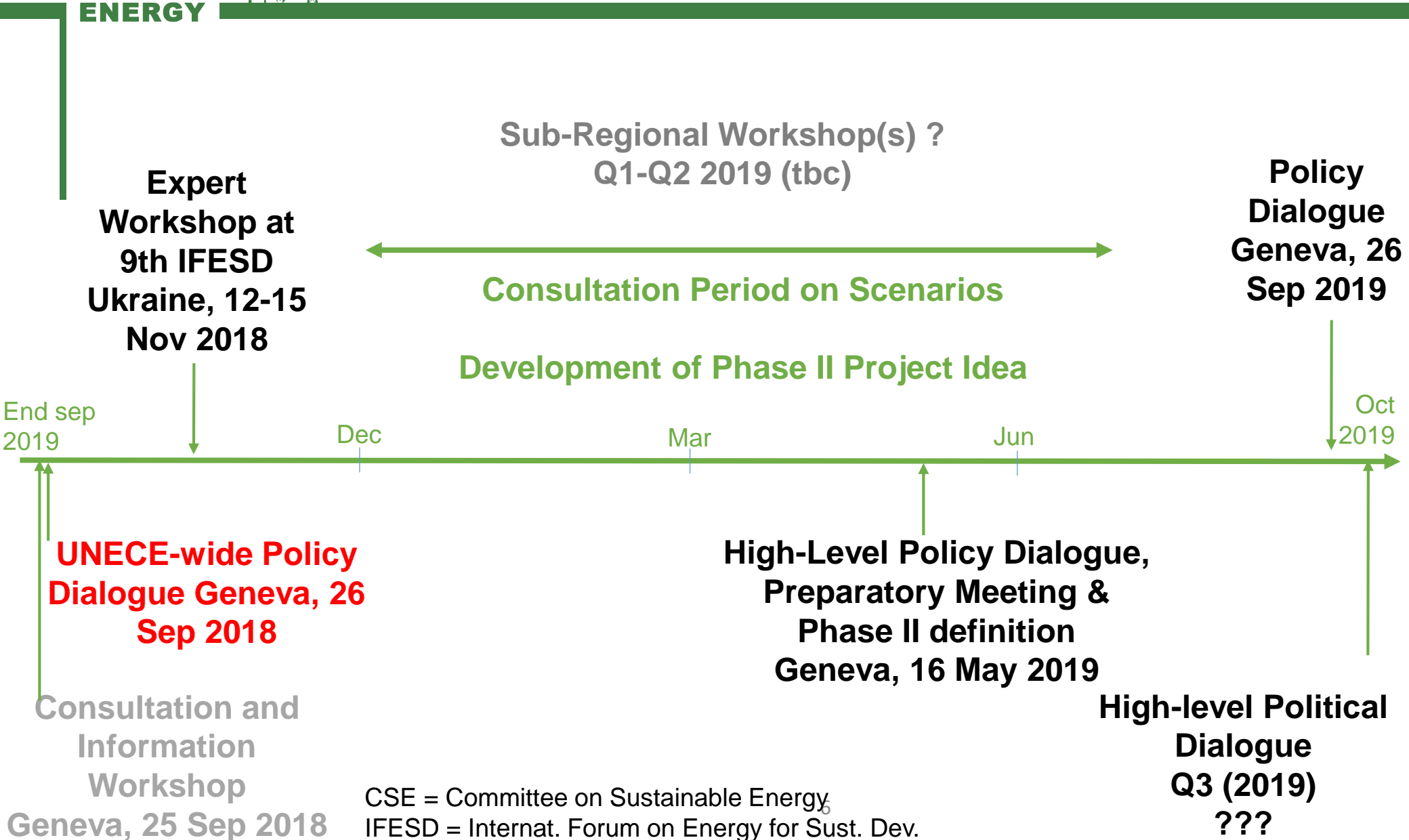
See countries in each cluster here:

<http://data.ene.iiasa.ac.at/message-globiom/overview/spatial.html>

Outlook: Project Timeline

Engagement with the Pathways Project Community

ENERGY



Pathways Events @ UNECE Energy Week

Workshop and Policy Dialogue

ENERGY



	25 September 2018	26 September 2018
A M	<u>WORKSHOP</u> OPENING & INTRODUCTION PRELIMINARY SCENARIO RESULTS TECHNOLOGY PORTFOLIO RESEARCH	<u>POLICY DIALOGUE</u> 27th Session of the Committee on Sustainable Energy PRELIMINARY SCENARIO RESULTS INPUTS TO POLICY OPTIONS
	Lunch (12.30-13.30)	Lunch
P M	EARLY-WARNING SYSTEM DISCUSSION: POLICY OPTIONS	-

Stakeholder Consultation and Information Workshop

Workshop Objectives

ENERGY



- Introduce the project to new stakeholders
- Inform about and present scenario modeling
 - Modeling approaches: GCAM and MESSAGE
 - Preliminary scenario results
- Inform about technology assumptions
 - Technology portfolio
 - Technology zoom-ins
- Discuss conceptualization of the early-warning system
- Define next steps
 - Stakeholder involvement
 - Planning for phase II



Thank you!

Stefanie Held

Stefanie.held@un.org

Sustainable Energy Division

UNECE

Date 25 | 09 | 2018, Geneva

