


# **A Proposal for Establishing National Experts Teams**

**First Session of Ad Hoc Group of  
Experts on Supply of Fossil Fuels  
10-11 Nov. 2004, Geneva**



# Establishing National Experts Teams

## Objective:

- to facilitate country-wide adaptation of national classification systems of the countries into UNFC
- To establish a systematic way for enhancing communication with the UNECE and countries which the UNFC has been initiated to apply or will be initiated
- To facilitate follow up the implementation of the UNFC.

# Establishing National Experts Teams

- **Adaptation of country's national systems to UNFC and implementation were conducted by mainly;**
  - **individual mining companies from industry**
  - **government organisations such as:**
    - **Ministries of Natural Resources**
    - **National Geological Surveys**
  - **Technical Universities, Institutes, Bureaus on mining and geology**

# Current Organizations to Adapt or Implement the UNFC (coal & mineral)

- **Government Organizations:**

[Armenia, Bulgaria, China, Estonia, Greece, Hungary, Iran, Indonesia, Kazakhstan, Lithuania, Romania, Russia, Slovakia, USA, Ukraine]

- **Government Org.+Univ.+Institutes+Bureaus of Mining & Geology :** [Brazil, India, Poland]

- **Government Organizations+ Individual companies:** [Germany, Slovenia, Turkey]

- **Individual Companies:** [Austria]

- **Institutes:** [Spain]

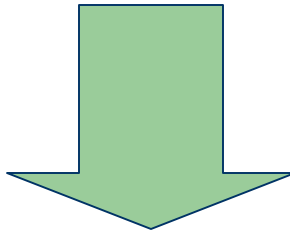
# Problems Faced during adaptation & implementation of the UNFC (Coal & Mineral)

## Problems related with;

- Coordination for countywide introducing, adaptation & implementation of UNFC,
- Regular Communication with UNECE,
- Adapting guideline into countries Mining Laws,
- Lack of experience on implementation, such as:
  - difficulty in evaluating “economic viability” because of lack of clear economic criteria for countries in transition

# Establishing National Experts Teams

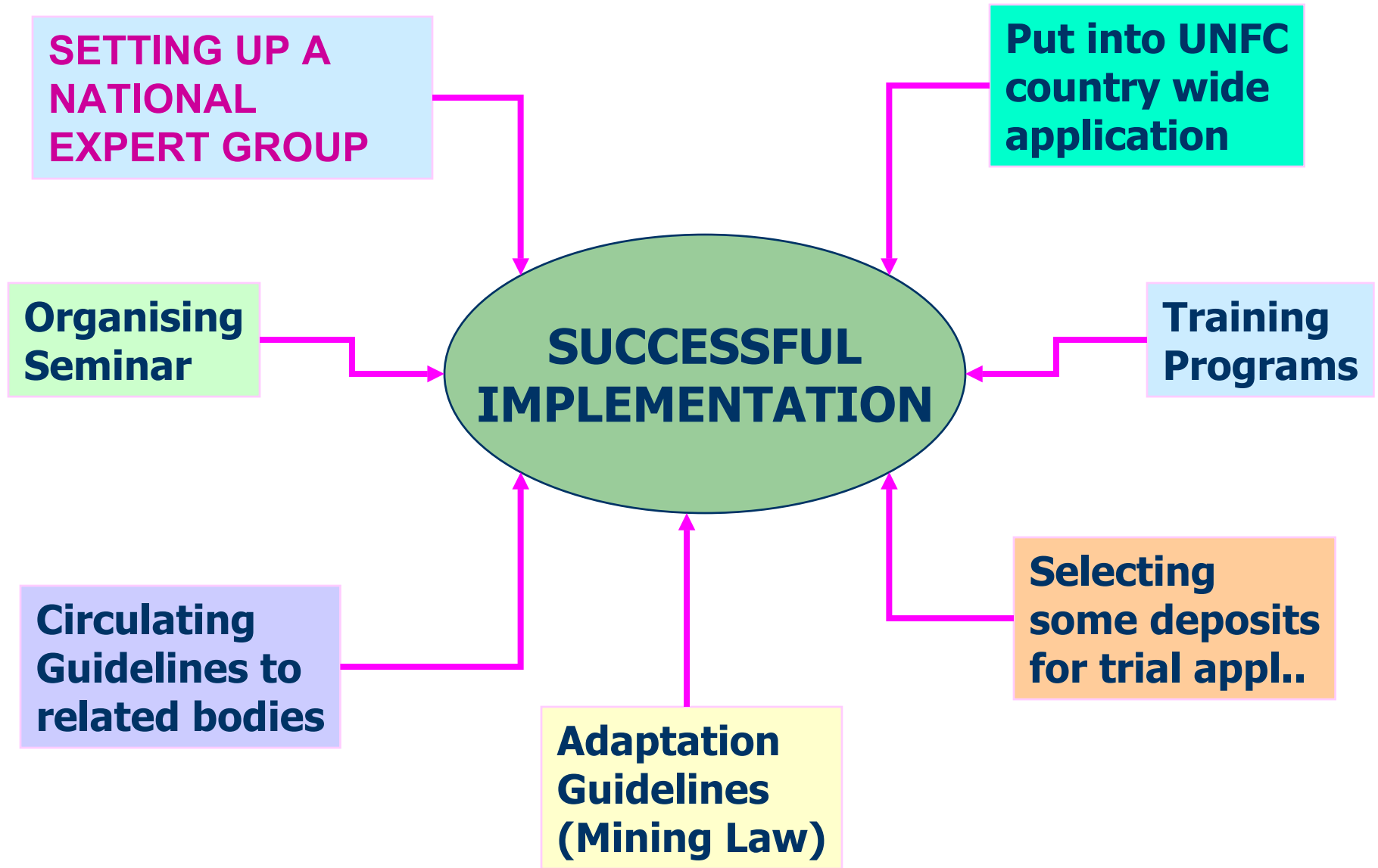
- To solve the problems, the first & the most important step



**To ESTABLISH NATIONAL EXPERTS TEAM**

# *Ways of Successful UNFC Implementation*

---



# Establishing National Experts Teams-

## Method of Establishing

- To establish a focal point to communicate
- To prepare a document that covers reasons of establishment of National experts team & recommendations for composition, responsibilities of these teams
- To organize a meeting with focal points  
(Elektronik mail group can be established to facilitate communication)

# Establishing National Experts Teams-

## Composition of NET

- could be modelled as UNECE Ad Hoc Group (chairman, sub-teams: base on the countries's resources. Depending on the requirements sub-sub- teams could be established)
- could be composed of all related bodies.  
Such as;
  - Government agencies,
  - individual companies,
  - Universities,
  - Institutes

# **Establishing National Experts Teams-**

## **Duties of NET**

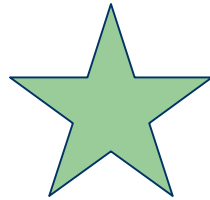
- **To provide communication with UNECE via chairman & coordinators of sub-groups,**
- **To organize periodical national meetings (each subgroup may organize more frequently meetings within their team)**
- **To prepare yearly activity report & submit it to UNECE for proving following up the implementation,**
- **To organize national or regional seminar on UNFC by the support of UNECE**
- **To translate guideline into national language,**
- **To adapt guideline,**
- **To organize country wide training programs**
- **To coordinate selection of some deposits for trial application,**

# Establishing National Experts Teams-

## Role of UNECE

- To provide supplementary documents on UNFC including guidelines
- To organize joint seminar to introduce UNFC principles
- To support training programs by both documents & UNECE experts
- To finance some expenses such as: documentary, translation.

## In-case there exist a national experts team & **works well**



- **No problem**

- **Team may be enlarged with petroleum experts**

# In-case there exist a national experts team & **exist problems**



- Problems should be identified clearly
- Solutions should be recommended country specific base