



United Nations
Economic Commission for Europe



Esri – THE LOCATION PLATFORM

Applied on UN/LOCODE

*Martin Engels
Account Executive*

April 28, 2016



Agenda

- Introduction
- ArcGIS Platform Overview
- UN/LOCODE with ArcGIS Online
- Summary & conclusion
- Questions & Answers



ArcGIS

▶ An Integrated Web GIS Platform

ArcGIS



Apps

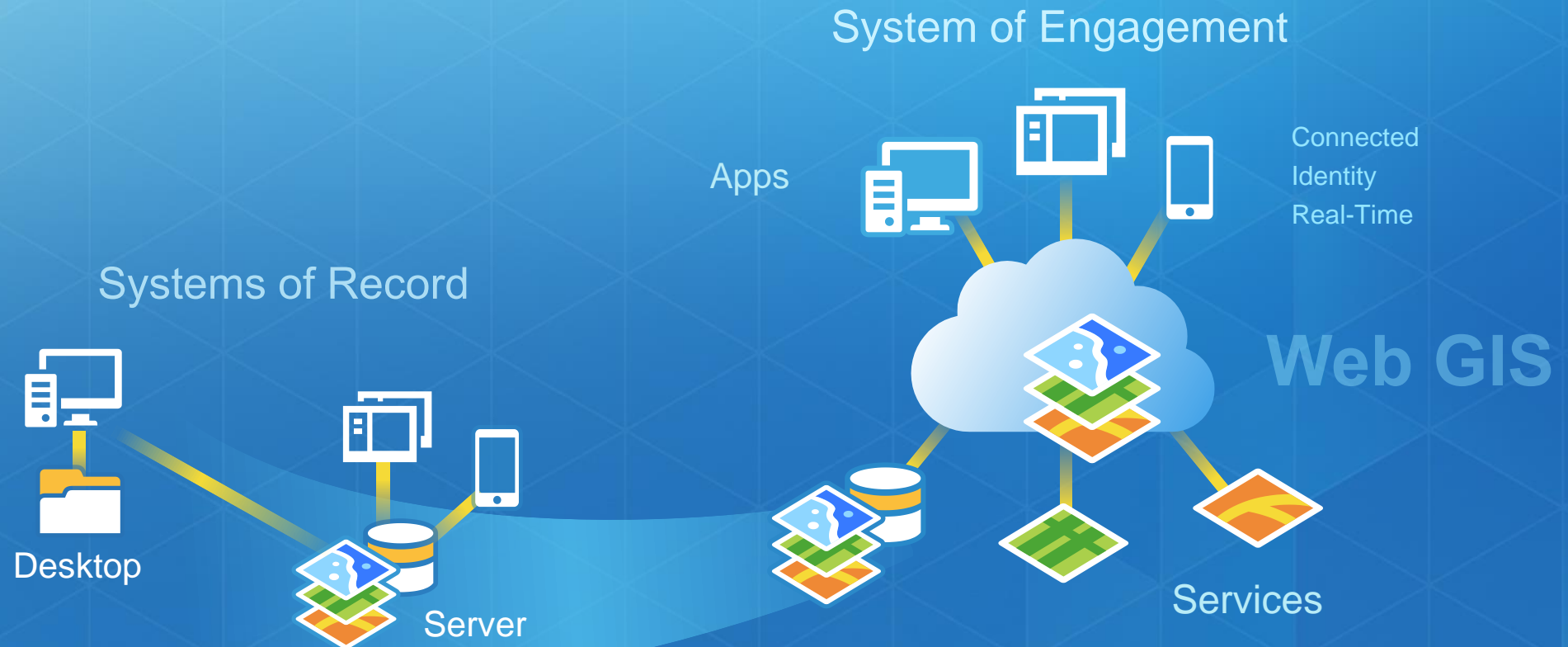
Access and Management

Services and Systems

Deployable On-Premises and Online

Web GIS Is Transforming GIS

Opening, Integrating and Simplifying Everything

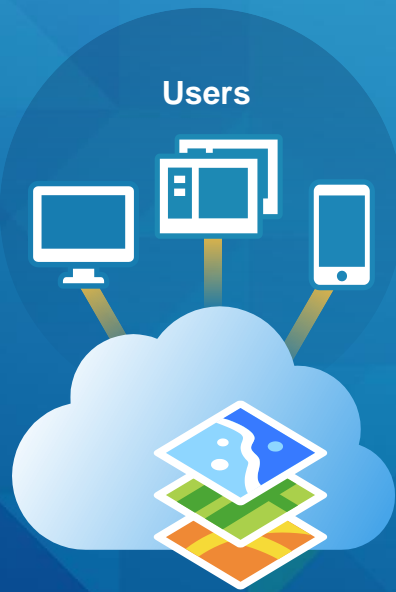


*Integrating Existing Systems . . .
. . . Creating a System of Systems*

ArcGIS Online

► Provides Cloud Based GIS

Apps



Users

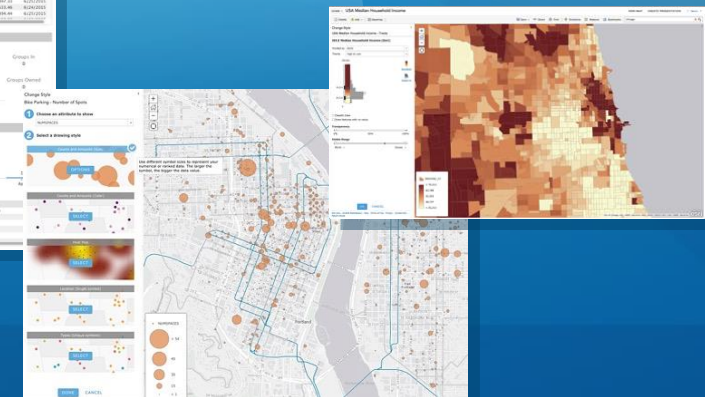
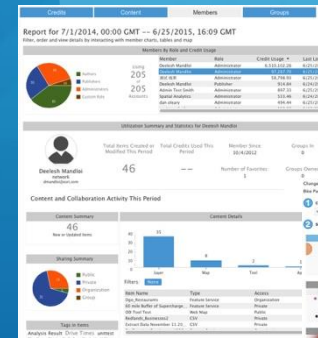
SaaS

New and Improved

- Smart Mapping
- Formal Metadata
- Administration

What's Coming

- Improved Search
- Advanced Analytics
- WFS / WMTS Support



Online Mapping, Analytics, Apps, and Content

Integrates with On-Premise Services and Systems

Demonstration

- ArcGIS Online
- Visualization of UN/LOCODE globally
- [UN/LOCODE Map](#)



Summary

- Visualizing the geographic location of each UN/LOCODE is very relative:
 - Coordinates are in degrees, minutes only, not very accurate
 - Ex: at 38° North, 1 minute \approx 2 km
 - So location is rather rough, many codes coincide
- But can already indicate:
 - A global overview of UN/LOCODES
 - Incorrect information, like country code
- For more accuracy, includes seconds and decimal seconds



Discussion & conclusion

- **How useful is visualization?**
 - A possibility to trace and track trade
 - Insights of Service area per UN/LOCODE
 - Areas far away from nearest UN/LOCODE
- **Question: how useful is this to you?**



Save the Dates:

GIS for a Sustainable World Conference - 2016

2 - 4 May – Geneva, Switzerland

Esri User Conference - 2016
June 27 - July 1, San Diego, USA



GIS for a Sustainable World Conference | applied geography for a better future

When you commit to something, you give it your all. With the sustainable development goals (SDGs) outlined, your organization will make no exceptions – you're focusing your efforts on making the world a better place - through efficient, and climate-smart development.

As you prepare your organization's strategies for working to achieve the SDGs, plan to attend the **GIS for a Sustainable World Conference**, to be held **May 2-4, 2016, in Geneva, Switzerland**. This event will explore how your organization can use geospatial technology to address challenges outlined in the global goals. Hear from your colleagues how intelligent maps and spatial analysis change the outcomes for migration, sustainable development, climate change, and more.

Registration is now open. More information: www.esri.com/events/gisforsdgs

Register Today



Industries ▾

Products ▾

Support & Services ▾

About ▾

Community ▾



Finally

- Thank you for your attention!
- Questions?
- Martin Engels
 - mengels@esri.com

