



REPUBLIC OF ALBANIA
Ministry of Public Works, Transport and
Telecommunication



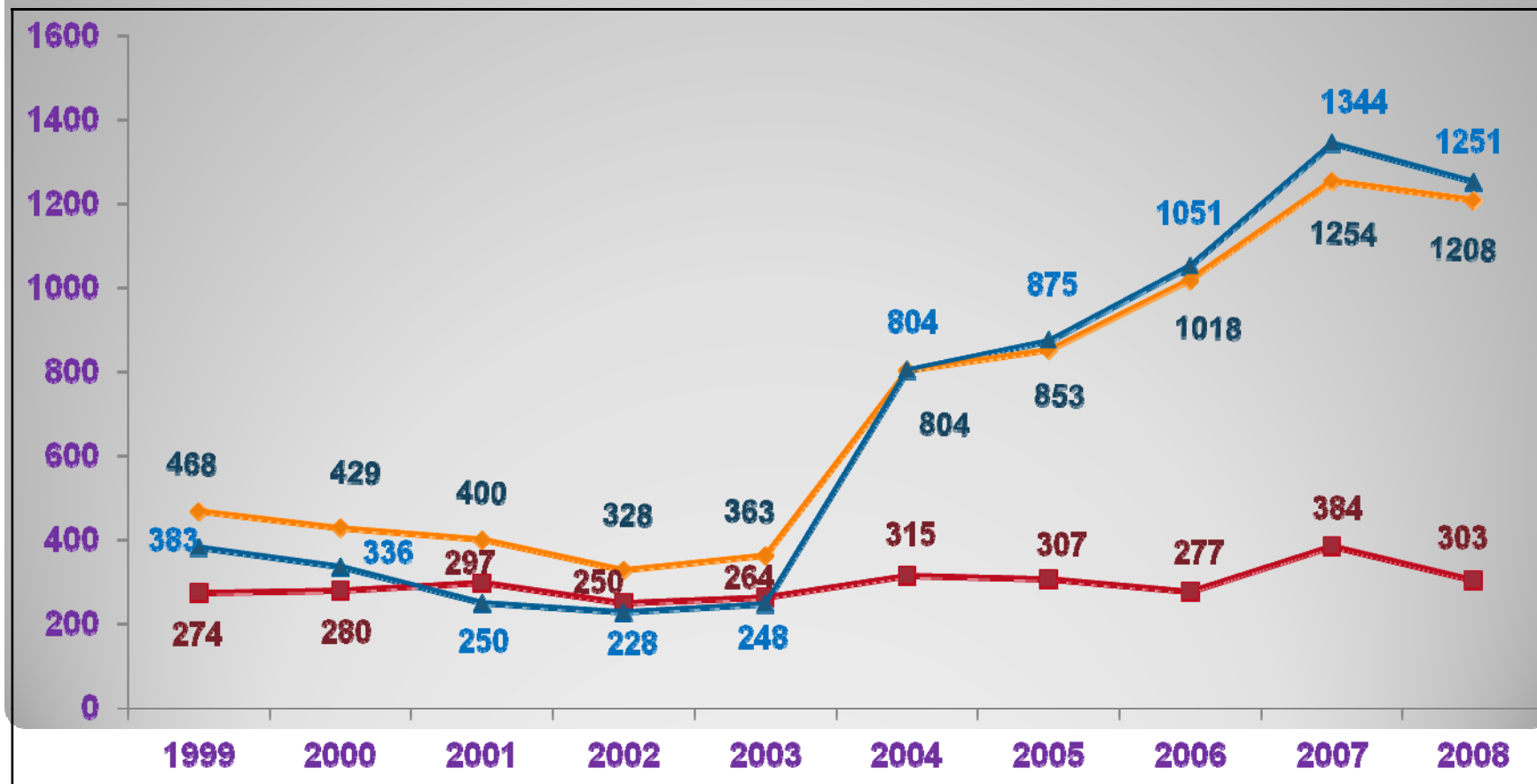
- Road Safety comprises a number of problems of legislative, institutional and implementation nature;
- The analyses of road safety components has made possible the acknowledgment and programming of our duties in order to be implemented by the central and local institutions;
- Major changes have occurred in the Albanian Road transport sector concerning:
 - vehicles inventory;
 - number of drivers;
 - road infrastructure improvement, etc .;

- These changes together with the huge demographic movements have brought/resulted in the increase of vehicles road traffic.
- Increase of traffic flow of vehicles and low level of public education concerning the implementation of circulation regulations has influenced in the increase of possibilities of traffic accidents with serious consequence, loss of human life or damage of property and environment.
- Under such circumstances, the safety of circulation in road (for vehicles and pedestrians) remains an important and evident issue. In the Government's programme the road safety, that is the protection of human health and property, is a priority for solution.

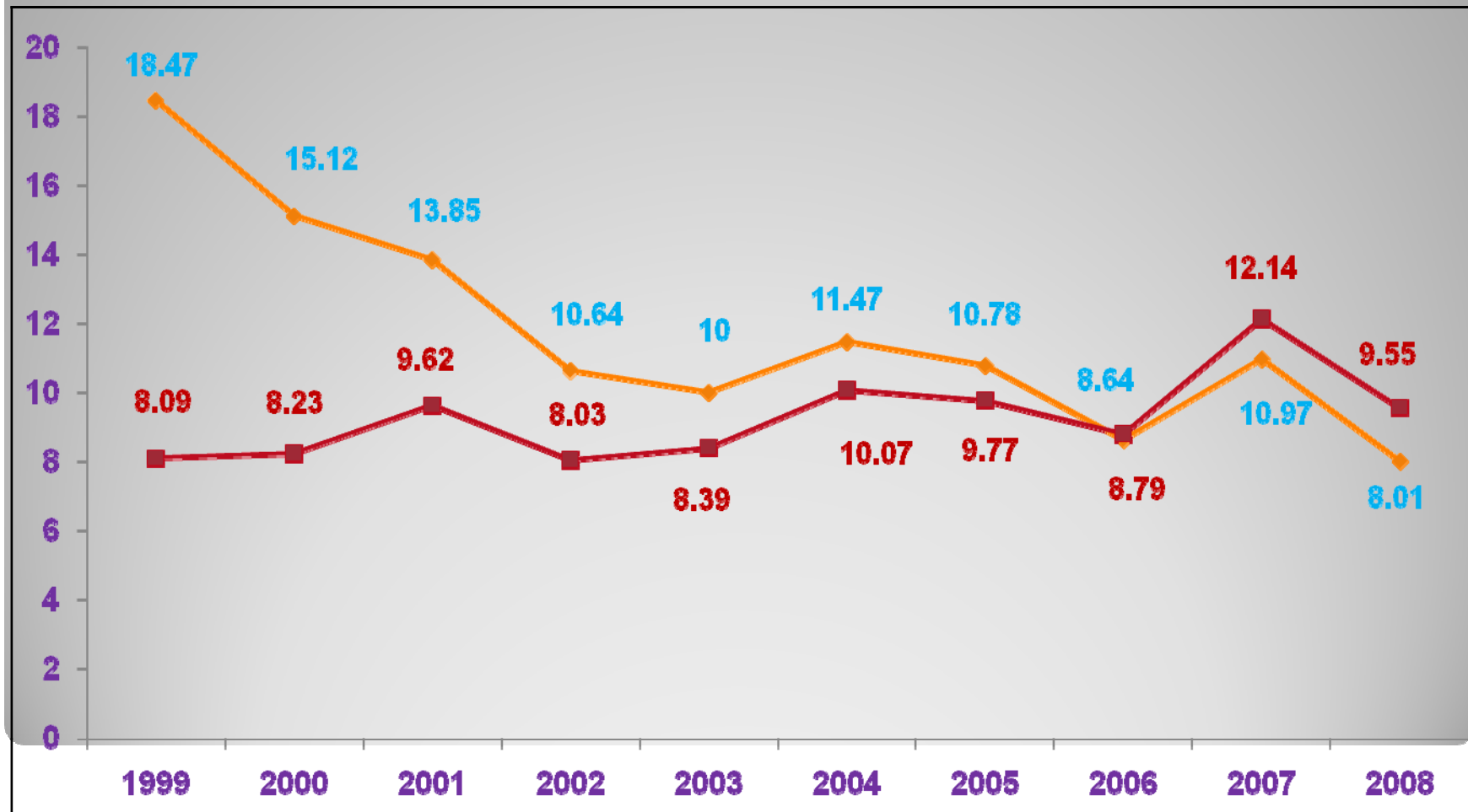
- Some of the main directions of the Government's Road Safety Programme are:

- Improvement of roads quality and road signaling;
- Implementation of road safety auditing procedures starting from the moment of road designing up to their construction;
- Strengthening of the road circulation discipline;
- Issuing driving licenses through real and uncorrupted tests of candidates for drivers;
- Restructuring of vehicles technical control;
- Massive education of all ages with the road circulation regulations;

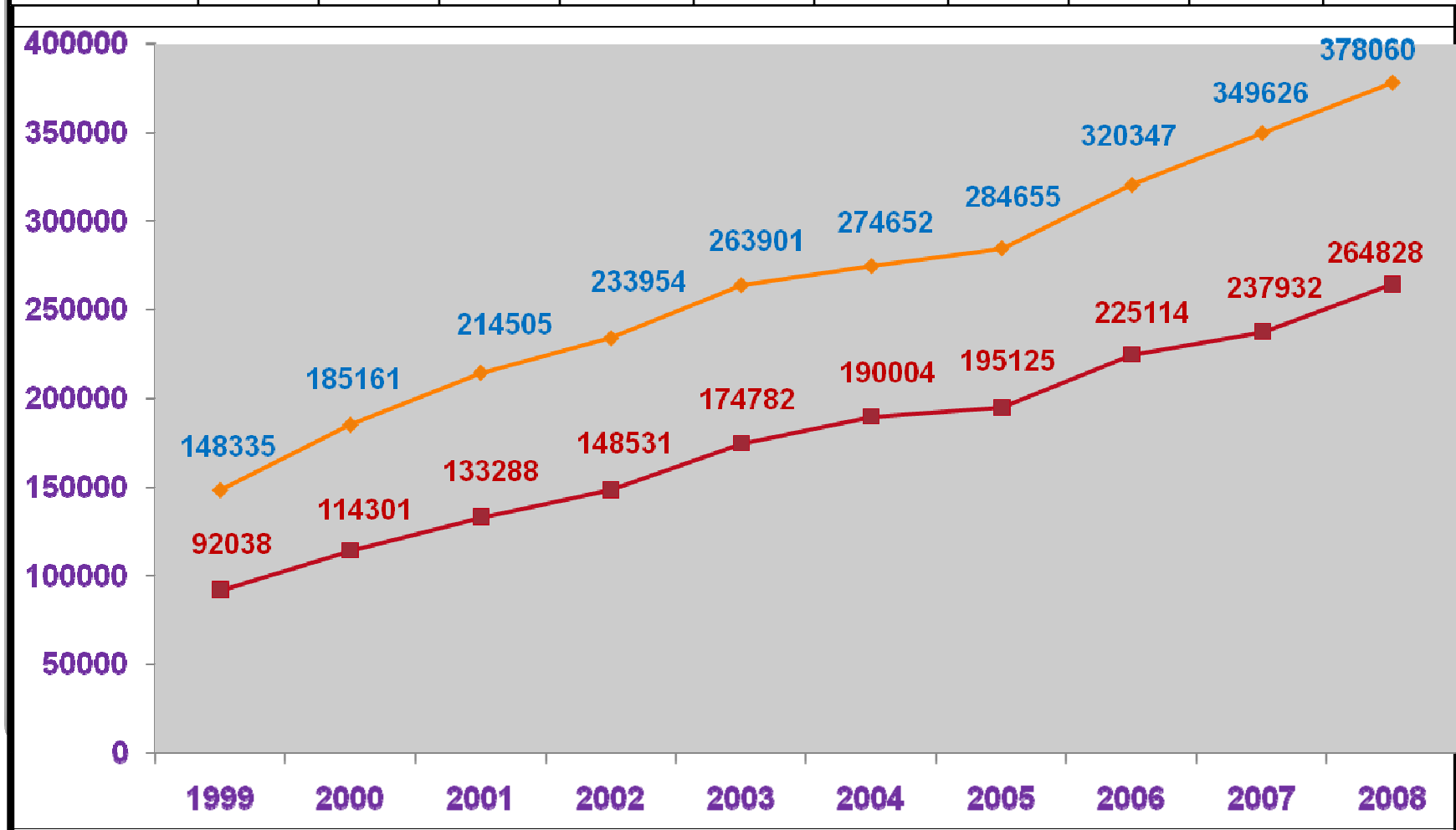
ACCIDENTS	1999	2000	2001	2002	2003	2004	2005	2006	2007	2008
Total	468	429	400	328	363	804	853	1018	1254	1208
Fatalities	274	280	297	250	264	315	307	277	384	303
Injuries	383	336	250	228	248	804	875	1051	1344	1251



Fatalities per:	1999	2000	2001	2002	2003	2004	2005	2006	2007	2008
10.000 vehicles	18,47	15,12	13,85	10,64	10	11,47	10,78	8,64	10,97	8,01
100.000 inhabitants	8,09	8,23	9,62	8,03	8,39	10,07	9,77	8,79	12,14	9,55



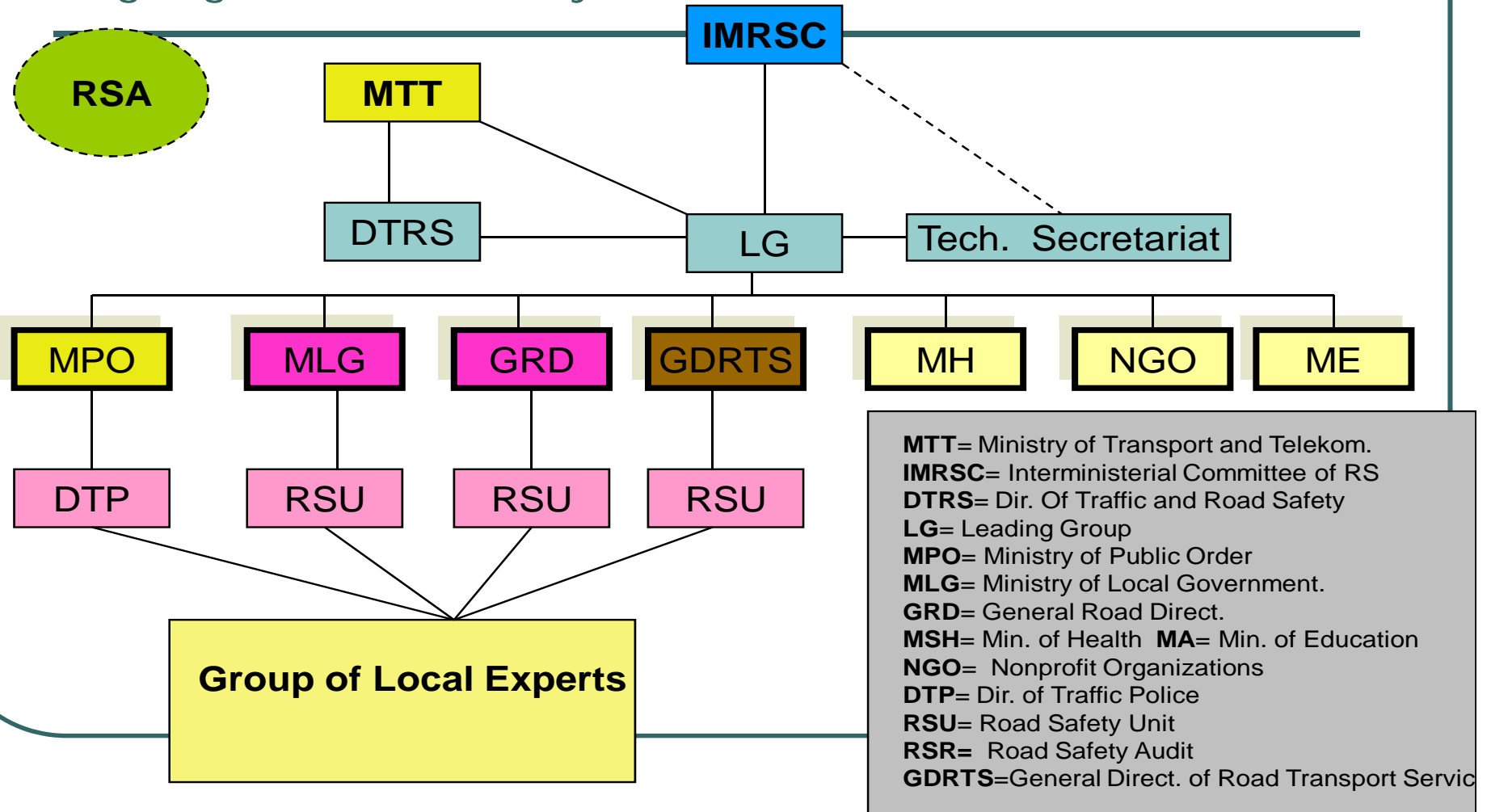
INVENTORY	1999	2000	2001	2002	2003	2004	2005	2006	2007	2008
Total	148335	185161	214505	233954	263901	274652	284655	320347	349626	378060
Passenger cars	148335	185161	214505	233954	263901	274652	284655	320347	349626	378060



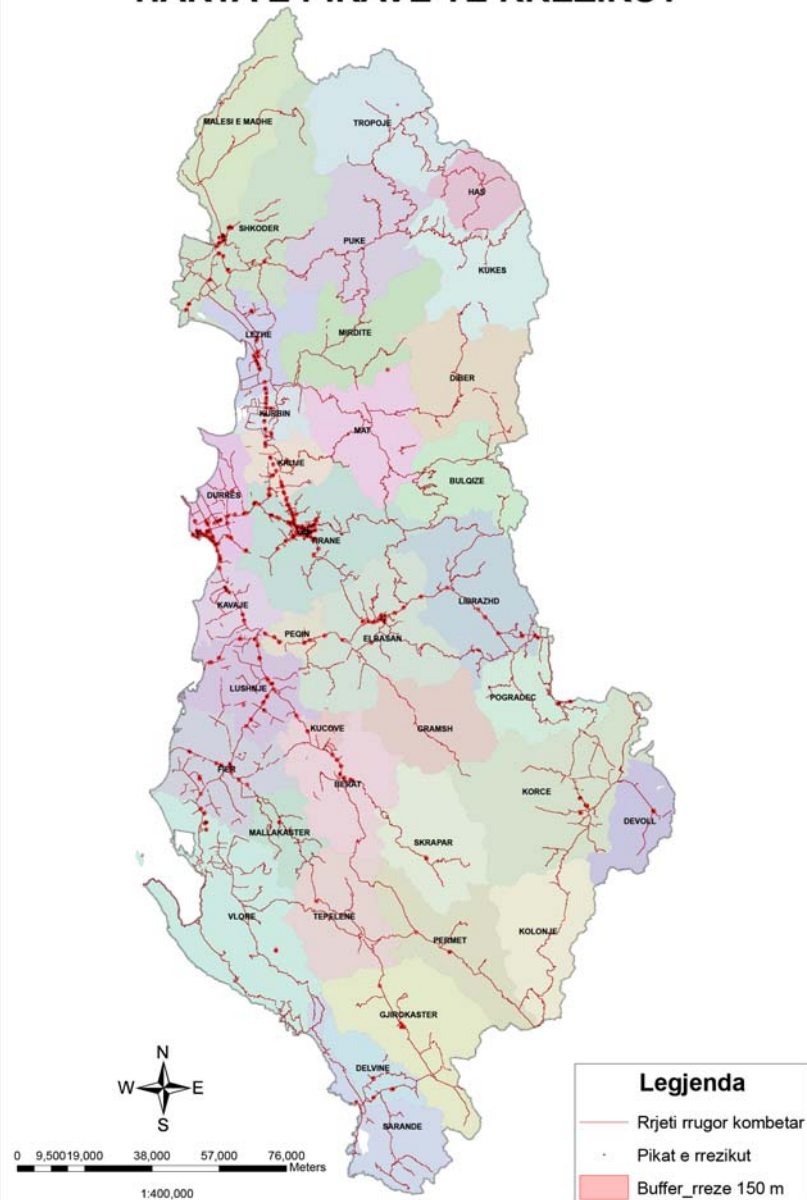
➤ The data that is taken from road accidents is analyzed on quarterly basis. Out of 32 elements in the accident form, we analyse the followings:

1. Accidents by consequences
2. Accidents by districts
3. Accidents by cities
4. Accidents by experience
5. Accidents by vehicle's type
6. Accidents by vehicle's production year
7. Accidents by road condition
8. Accidents by alcohol test
9. Accidents by license type
10. Accidents by behavior
11. Accidents by time of happening
12. Accidents by weather
13. Accidents by road geometry

Organigram of road safety



HARTA E PIKAVE TE RREZIKUT



Given the accidents that have occurred during the period 2005 ÷ 2009, the Technical Secretariat of the Road Safety Inter - Ministerial Committee has prepared the Black Spots Map, with 210 spots, which will help us in our future work to plan the investments fund for road safety.

Thank you for your attention!

PREPARED BY:

Mr. Maksim Tashi
mtashi@mpptt.gov.al

Ms. Juna Kote
jkote@mpptt.gov.al