



## **TER WP2**

# **Transport Challenges and Global Crisis**

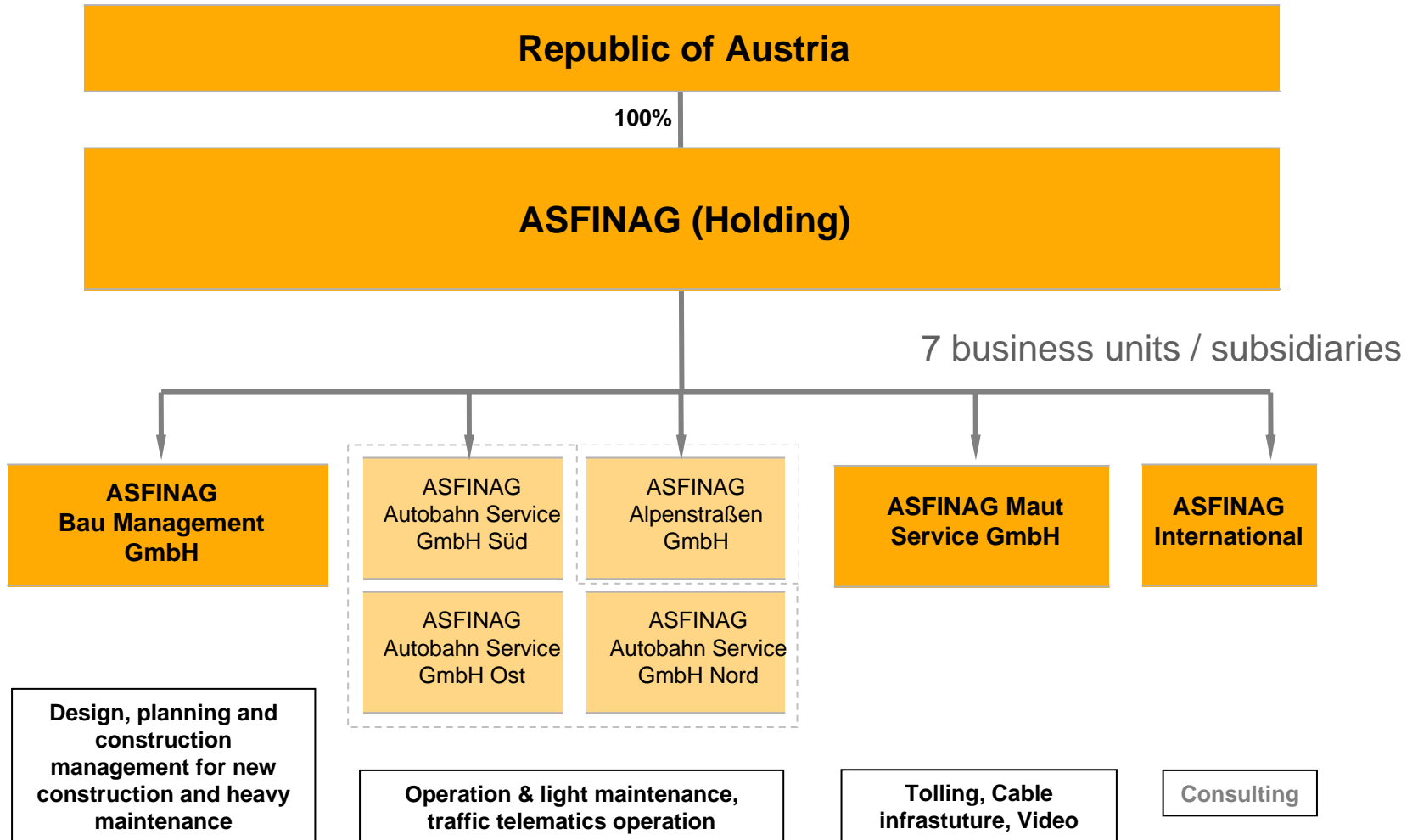
Dr. Klaus Schierhackl, CFO

Bad Gastein, 23.4.2009

## ASFAG Group is...

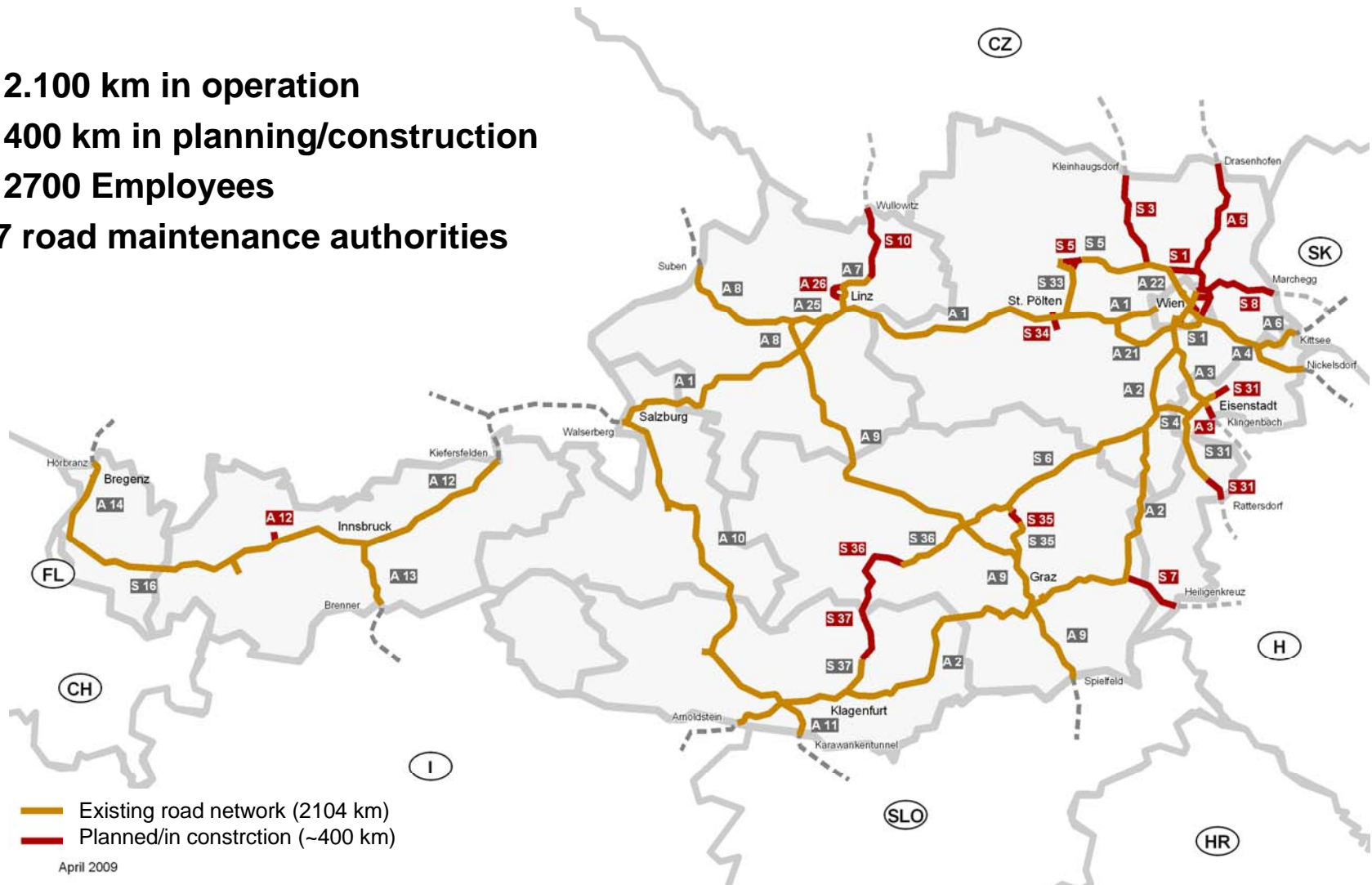
- | the 3rd largest concessionaire in Europe
- | responsible for a network of more than 2.100 km motorways
- | Purely user financed
- | 100% state owned

# ASFINAG's structure



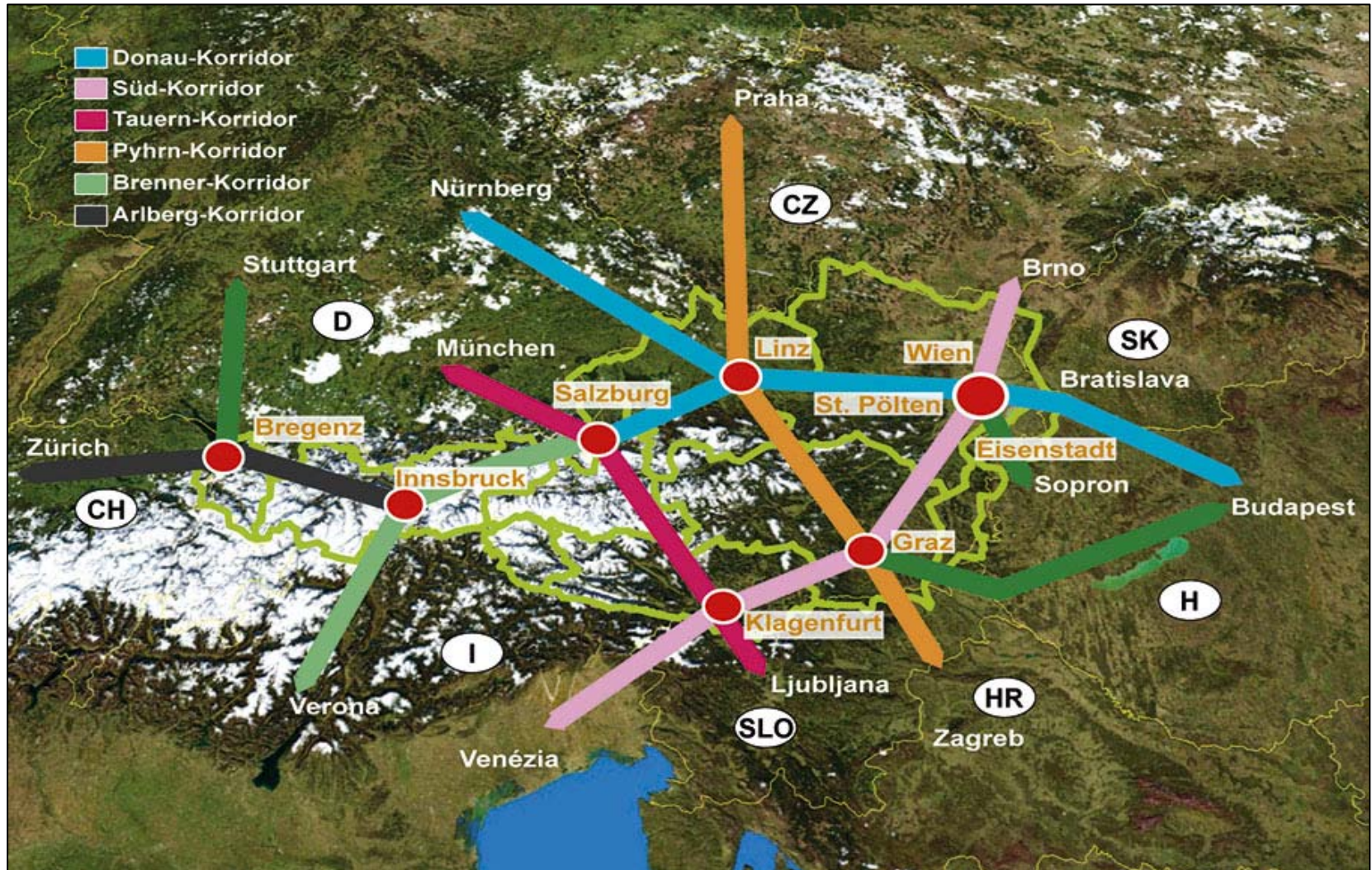
# ASFİNAG road network and projects

- | > 2.100 km in operation
- | ~ 400 km in planning/construction
- | ~ 2700 Employees
- | 47 road maintenance authorities





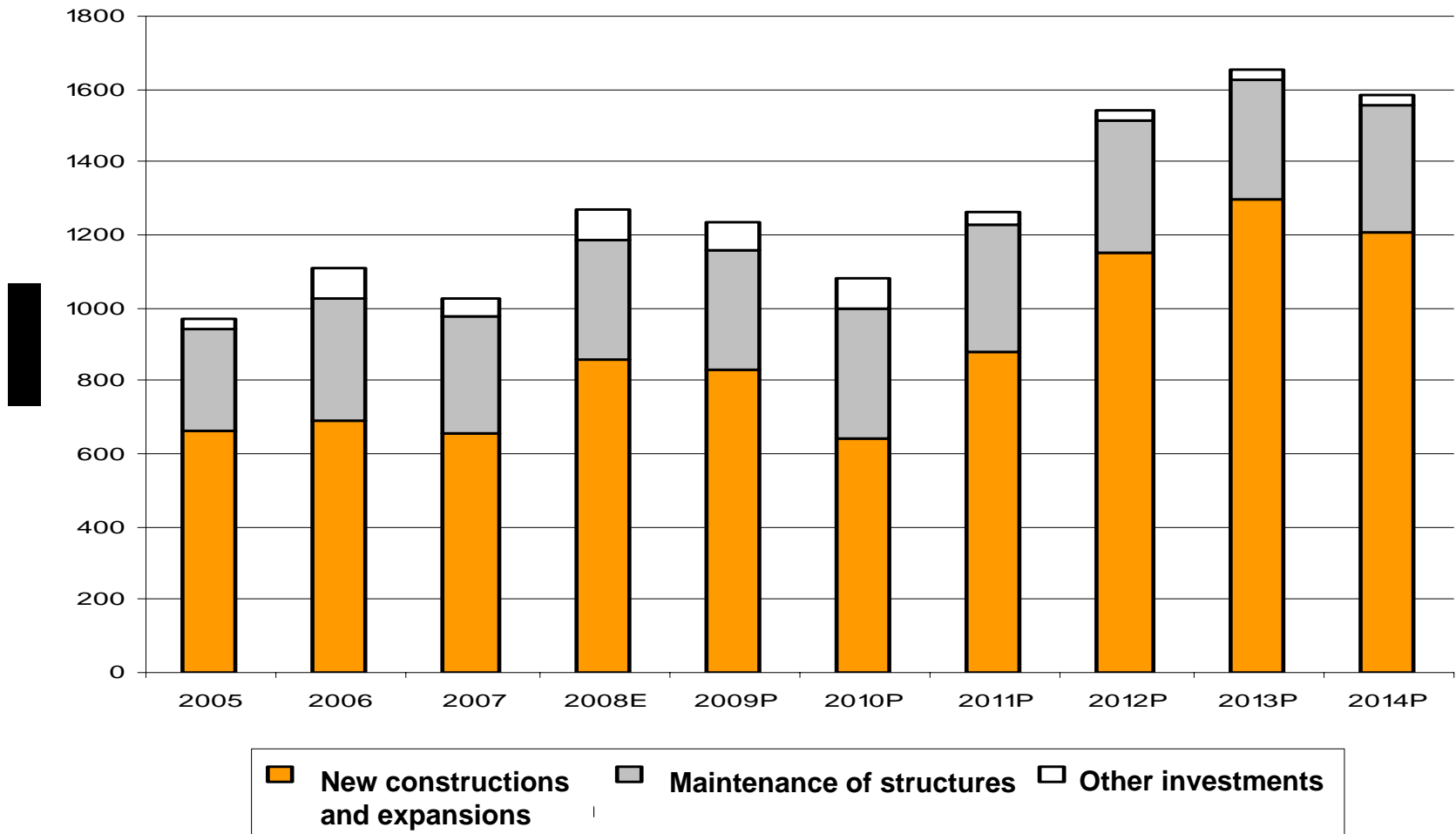
# Exceptional Traffic Situation in Austria



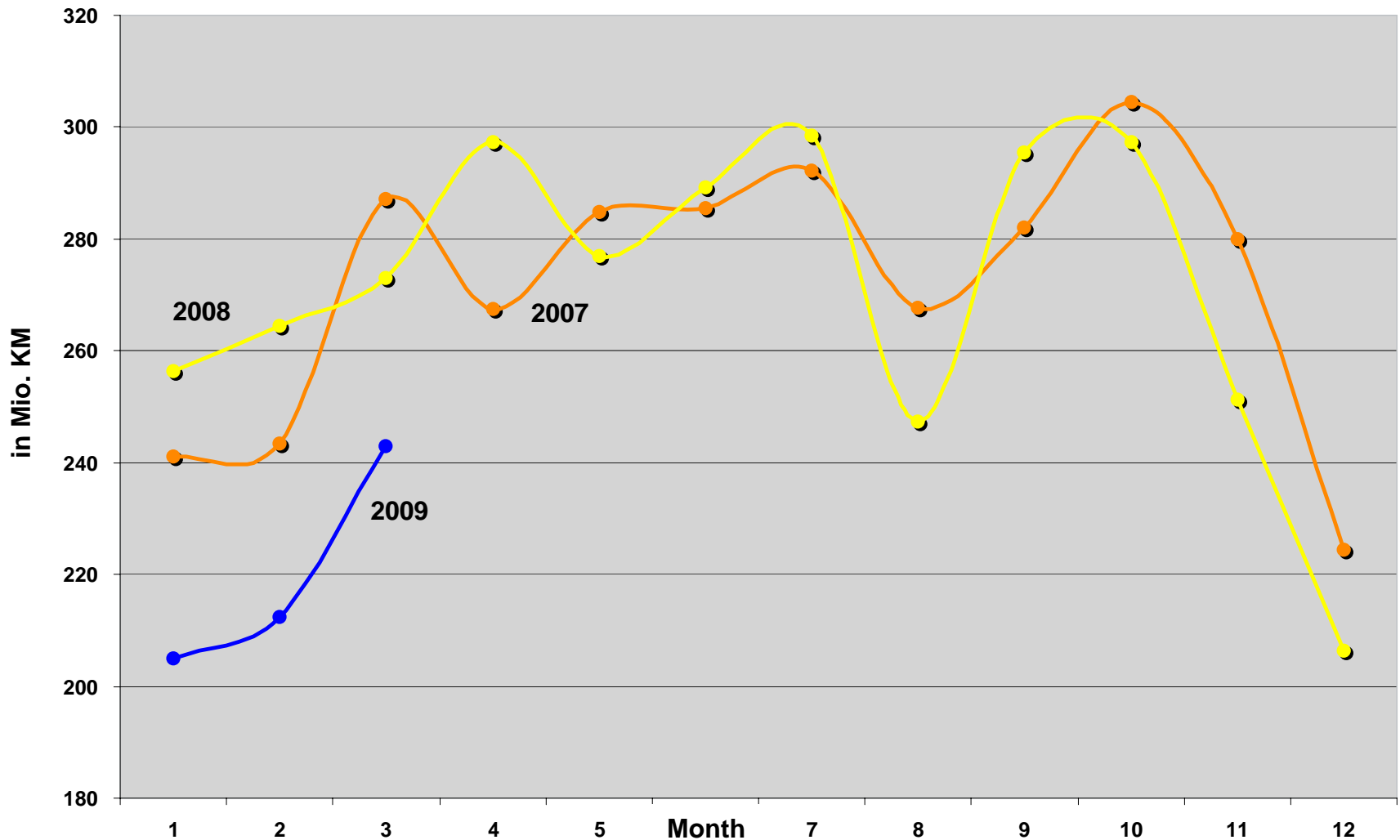
## Financial figures 2008 (in Mio. EUR)

Toll revenues from lorries	1.062
Revenues from stickers	336
Revenues from toll sections	118
EBIT	932
Financial result	- 490
Annual net profit	330
Cash-flow from business activities	359
Cash-flow from investing activities	- 550
Cash-flow before financing activities	- 191
Total assets	12.470
Equity	1.581
Equity ratio	12,7%
Short term and long term liabilities	10.889

## Construction program 2005 - 2014



# Significant effects of the global crisis: Changes in the driving performance 2007-09 (*vehicles > 3,5 t*)

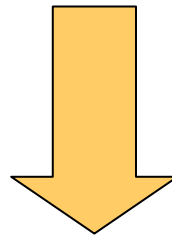




## Package for the stimulation of economy

- The package consists of a bundle of measures
- Especially labour intensive work
- Expansion and Rehabilitation projects

Preponed Investments  
2009 - 2012



	<b>2009</b>	<b>2010</b>	<b>2011</b>	<b>2012</b>
<i>In Mio. €</i>	+13,5	+64,4	+78,1	+44,1

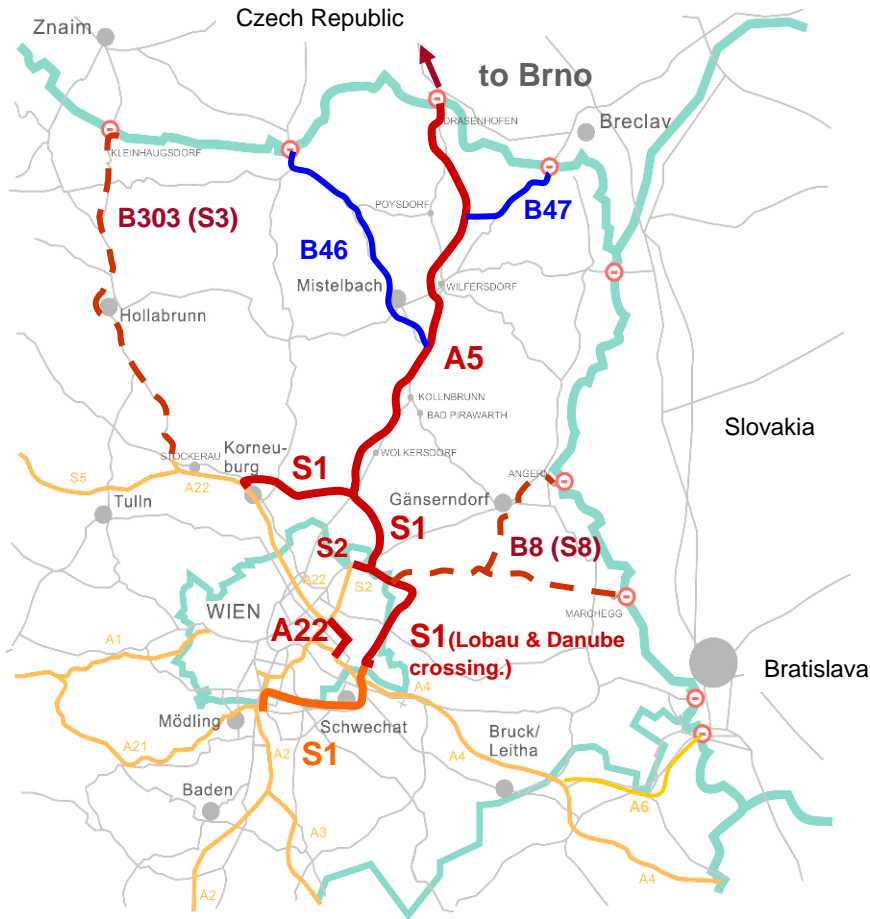


## **PPP Ostregion**

## The rational behind PPP projects

- | Main PPP - Project goals are
  - | Developing new structures in market competition
  - | Improvement of cost structures for ASFINAG and the Austrian Republic
  - | Positive input of private know-how for ASFINAG's core tasks
- **In case of ASFINAG not to relieve the federal budget !**  
**ASFINAG generates its returns solely from user fees (tolls) and does not receive any grants from the federal budget.**

# The "Ostregion"



**Overloaded road network** in and around Vienna, a **poor Connection** to the urban areas north of Vienna and a **missing efficient north-south connection** with the Czech Republic.

ASFINAG's ~110 km and ~ €3.2 bn construction programme (several packages) for the **primary motorway and expressway network** in the „Ostregion" including **A 5, S 1, S 2 and A 22.**

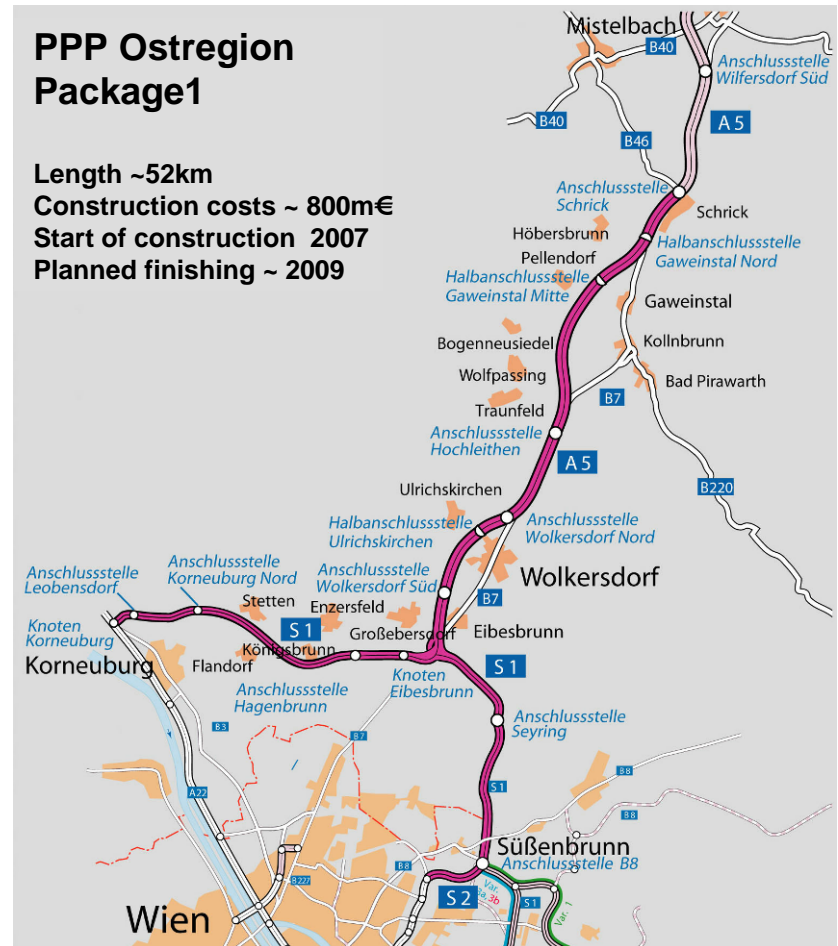
- planned Ostregion projects
- - planned additional projects
- upgrade of secondary roads



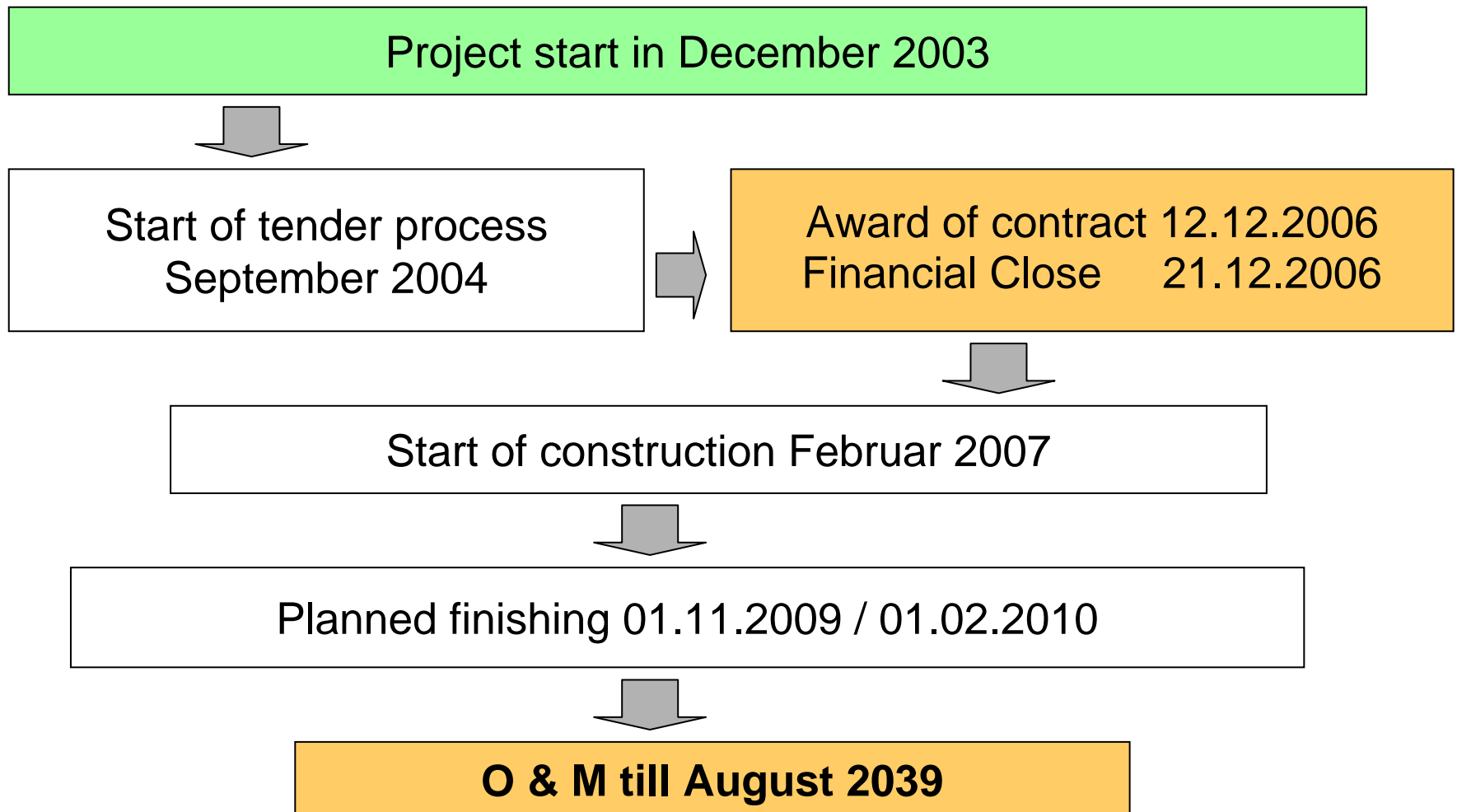
## Scope of the project *(contract awarded in 12/06)*

Following factors influenced the scope of package 1:

- | Basic complexity of first highway DBFO project
- | Status of design
- | Status of necessary approval procedures
- | **Appropriate size for ensuring strong competition and bankability**
- | Cost certainty and clarity about the risks
- | Interconnection and optimal size for operation



## Timetable - PPP Project



## Partner in the project

- | Concession contract signed on 12 December 2006
- | Financial close reached on 21 December 2006 – **project NPV €933m**
- | Concessionaire:



- | Sponsors:

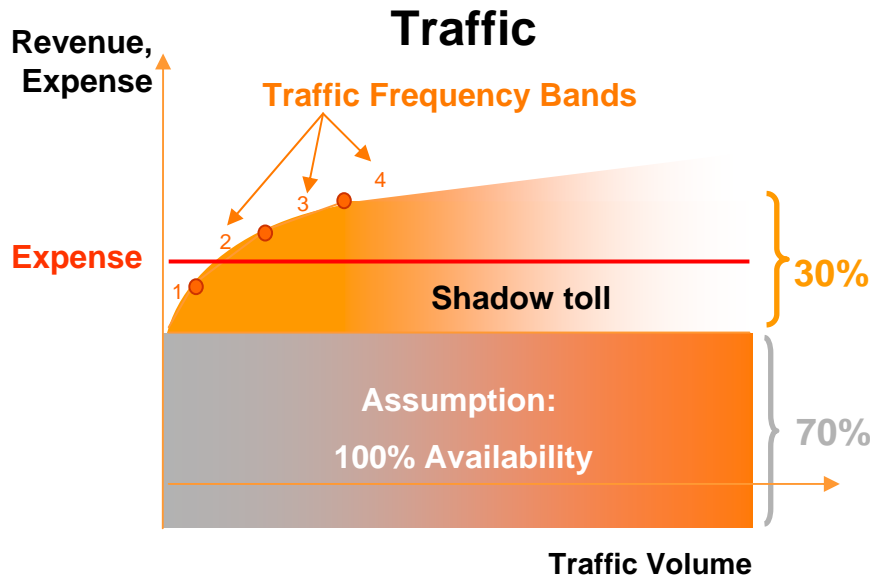


- | Lenders:



# Combined payment mechanism

- I Approx. 30% via shadow toll
- I Approx. 70% via availability fee



Availability can be exclusively influenced by the concessionaire



## Facts & Figures - Building Project

- | **76 Bridges**
- | **18 Underpasses / Tubes**
- | **7,4 km Tunnel Sections**
- | **11 Full Junctions , 3 Half Junctions, 2 Interchanges** (Eibesbrunn und Korneuburg/ A22)
- | **Drainage System:** 25 Basins, 42 Pumpstations
- | **About 81 km Noise Reduction Walls / Barriers**
- | **Buildings for the Operation Team & Control Center**
- | **2 Rest Areas** with gasstation, restaurant, hotel and parking areas

## Facts & Figures - Quantities

Soil and Excavation Works:	ca. 9 Mio. m <sup>3</sup>
Asphalt:	390.000 to
Concret Surface:	1.100.000 m <sup>2</sup>
Drainage System:	175.000 m
Noise Reduction Walls / Barriers:	155.000 m <sup>2</sup>
Concret:	1.590.000 m <sup>3</sup>
Steel:	87.000 to
Land acquisition:	~ 2.800 different real estates
Performance:	~ 75 % Feb 2008

## Conclusion

### I Planned finishing, open for public traffic:

S2 and S1 Ost : 1st November 2009

A5 Süd and S1 West: 1st Februar 2010





**ASFINAG**  
**International**



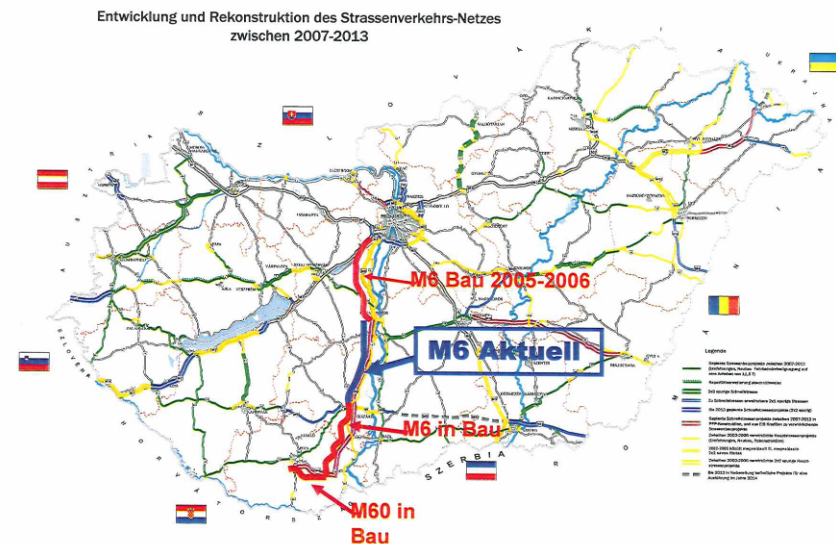
## **ASFINAG International GmbH was founded...**

- | To apply the extensive experience and know how of ASFINAG in the field of operation, tolling and the construction of highways**
- | To pursue the strategy of internationalization**
- | To strengthen ASFINAG's position among the other European infrastructure companies**
  
- | BUSINESS PURPOSE:**
  - | Consulting and participation in projects connected with planning, construction, operation, maintenance, tolling and realization of projects in the field of infrastructure relating to motorways, expressways and projects on primary roads**



## International

- ASFINAG International holds a stake in the operation company
- Length of the section: 65,1 km from Dunaújváros – Szekszárd
- Period of the concession: 30 years
- Beginning of the operation: 31.03.2010
- Compensation: availability of the route





**ASFINAG**

**Your reliable partner**