



Picture 1: FBC loaded with coal-tar asphalt UN3077 in a railway car



Picture 2: FBC loaded with coal-tar asphalt UN3077 in a truck



Picture 3: FBC loaded with sulphur UN1350 in a vessel hold



Picture 4: Sulphur unloading from FBC into a vessel hold 2



Picture 5: Sulphur UN1350 loading into FBC in a holding car



Picture 6: Sulphur UN1350 loading into FBC



Picture 7: Unloading of coal-tar asphalt UN3077 from FBC to vessel hold



Picture 8: Tightly folded FBC being loaded into a truck with a lifter



Picture 9: Tightly folded FBC



Picture 10: FBC lifting from a truck



Picture 11: FBC lifting from the basket with 8-hook crane spreader. 2



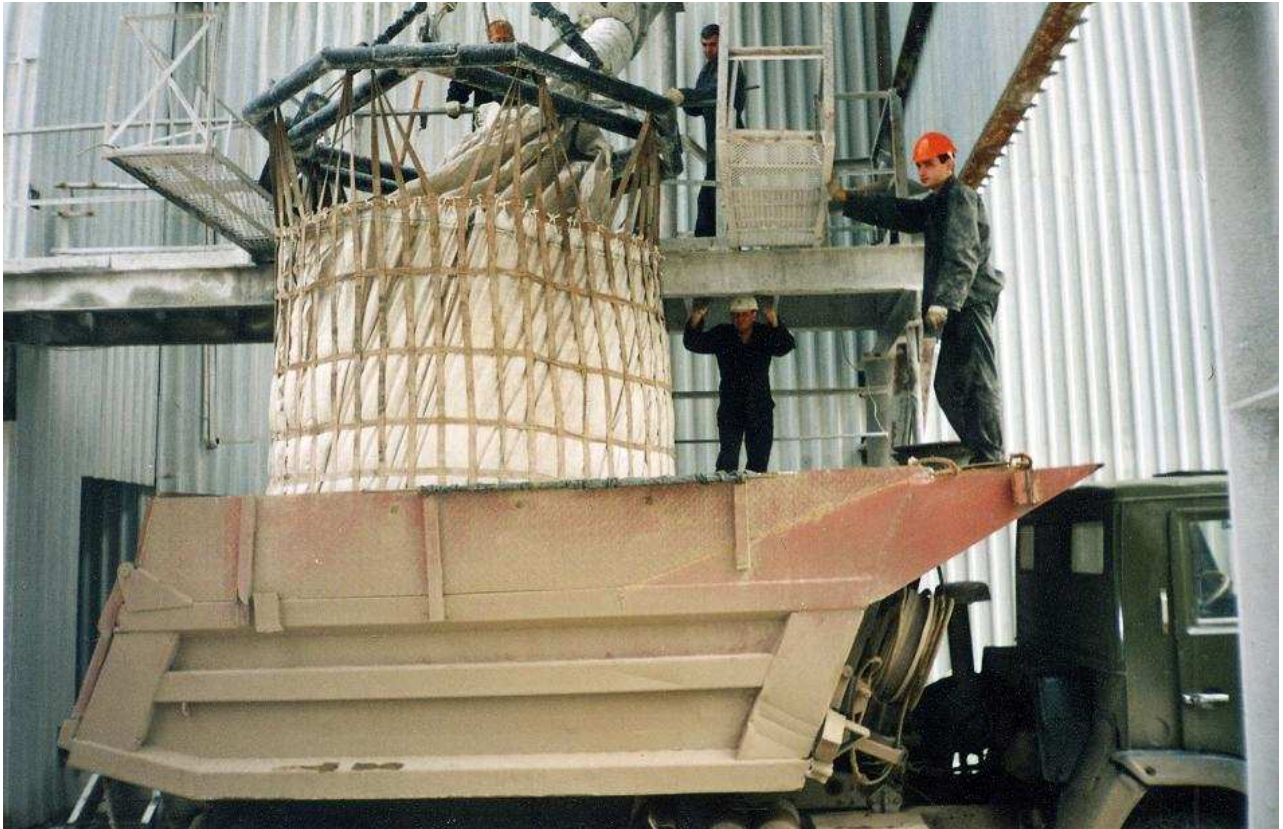
Picture 12: FBC loading in a basket at a car platform 2



Picture 13: FBC loading in the suspended position above the railway car. 1



Picture 14: FBC loading in the suspended position above the railway car. 2



Picture 15: FBC loading in the suspended position above the truck



Picture 16: FBC loading in the suspended position at a fork lifter



Picture 17: Loaded FBCs in a basket at a railway platform



Picture 18: Use of FBC in polar regions. 1



Picture 19: Winter landscape of polar regions. 2



Picture 20: Winter landscape of polar regions. 3



Picture 21: FBC inspection prior to further use