



Working paper No. GRPE-PMP-16-1
16th PMP working meeting
Geneva, 16 January 2006

*Report on current results
from LD Interlab
And Planning of HD Interlab*

P. Dilara, J. Andersson, R. Muñoz-Bueno

Inter-laboratory Correlation Exercise Summary

- Light Duty proceeds with some delays mainly due to transport problems
- 2 out of 9 labs still to test (+JRC final testing)
- Foreseen end of testing by April-May 2006
- Full reporting within 2006

- Heavy Duty to start after end of LD part

Timetable (PART A)

No	Address:	PMP testing weeks:
1	JRC, Ispra, Italy	9 to 17 November
2	AVL MTC Sweden	29 November-3 Dec 04
	<i>AEA Technology, UK</i>	<i>Calibration of Golden Measurement System</i>
3	Ricardo Consulting Engineers UK	1-8 February 05
4	RWTÜV Essen, Germany	1-8 March 05
5	Lab of Applied Thermodynamics (LAT) Greece	6-20 April 05
6	JRC, Ispra, Italy	10-31 May 05
	<i>AEA Technology, UK</i>	<i>Calibration of Golden Measurement System (during transfer of car to Japan)</i>
		<i>July- Transfer to Japan</i>

GRPE- PMP Group meeting, 16 January 06

Timetable (PART B)

7	NTSEL, Japan	30 August – 22 September 05
8	NIER, Korea	24 October – 11 November 05
		<i>December 05 – Transfer to Europe</i>
	<i>AEA Technology, UK</i>	<i>Calibration of Golden Measurement System January – beg. February 06</i>
9	Shell Global Solutions UK	February 06
10	UTAC France	March 06
11	JRC, Ispra, Italy	April 06 Extended testing period to address open issues
	CARB, US ?	
	FINAL REPORT	<i>Within 2005</i>

GRPE- PMP Group meeting, 16 January 06



Vehicles tested

DPF Diesel Vehicles:

1. PEUGEOT 407 HDi FAP 2000 cc (in all labs)
2. BMW 525d DPF equipped, 2500 cc (Ricardo)
3. MAZDA Bongo van DPF equipped, 2000 cc (NTSEL-Japan)

Non-DPF EURO-4 Diesel Vehicles

4. Audi A2, TDi, EURO-4, non-DPF, 1500 cc (Ricardo)
5. Honda Accord i-CTDi, EURO-4, non-DPF, 2200 cc (LAT)
6. VW, GOLF TDi, non-DPF, 1800 cc (RWTUV)
7. Kia Pride, non-DPF, 1500 cc (NIER-Korea)

GDI Vehicles

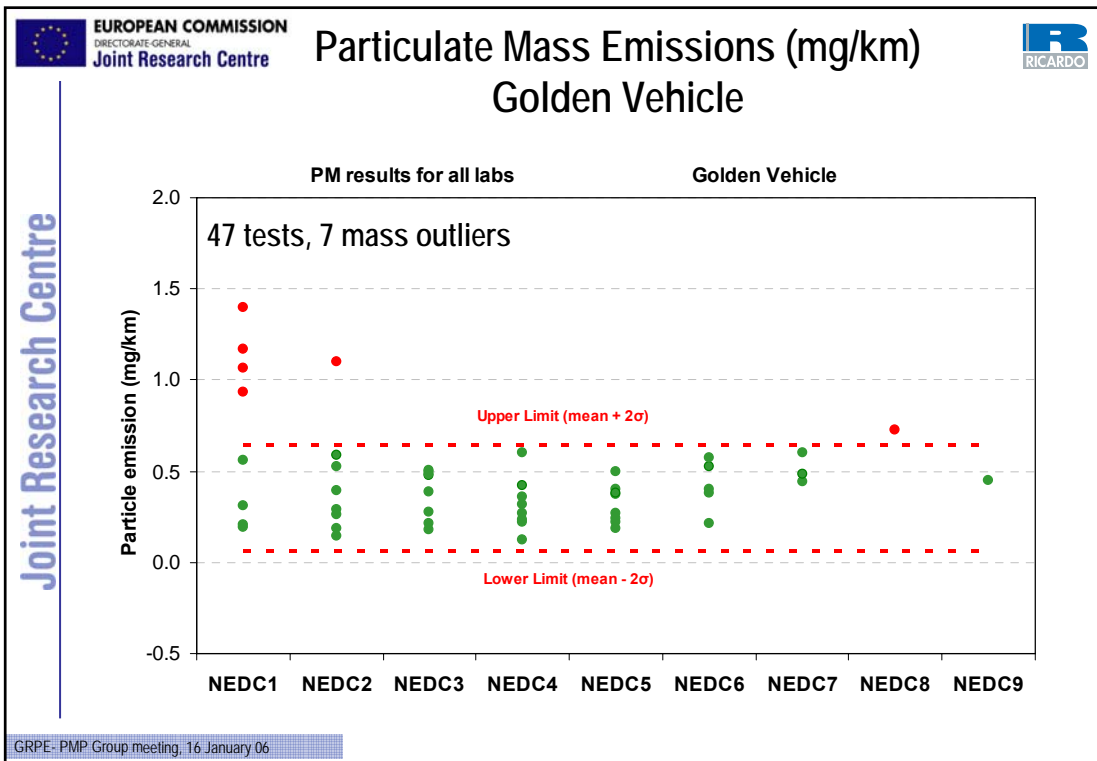
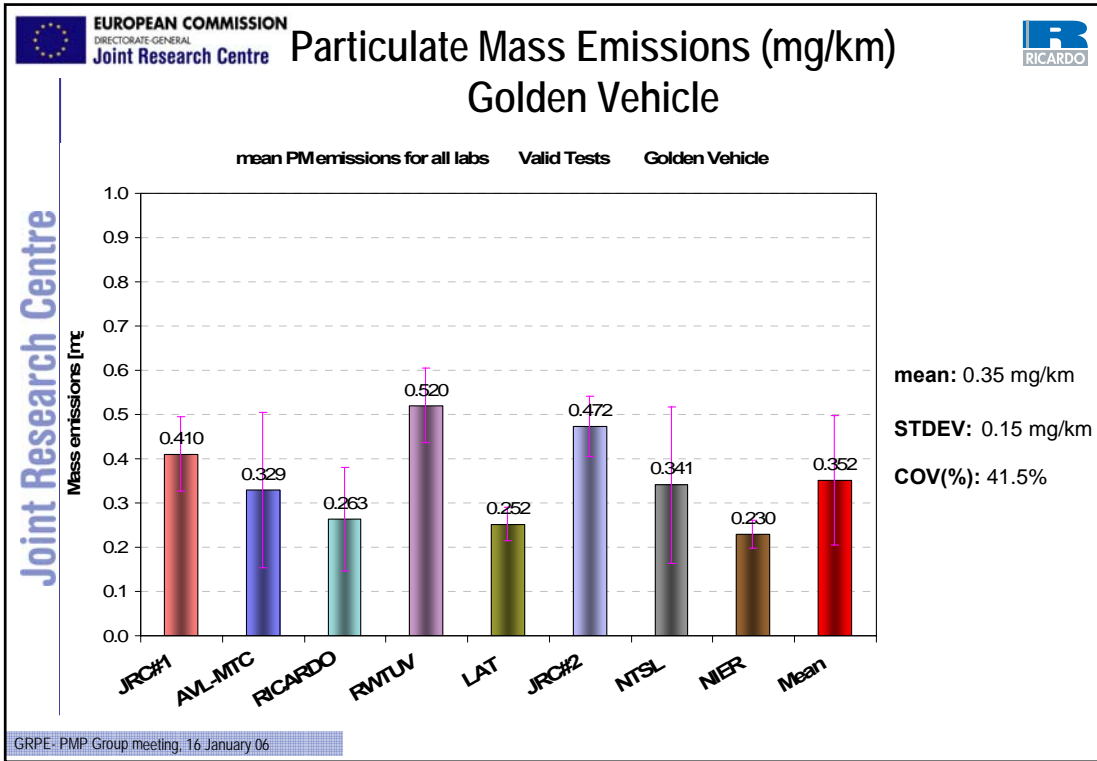
8. Mitsubishi, Carisma, GDI, 1800 cc (RWTUV)
9. VW, GOLF FSI, GDI, 1600 cc (JRC-Ispra#2)
10. Toyota Crown Royal Saloon, GDI, 3000 cc (NTSEL-Japan)

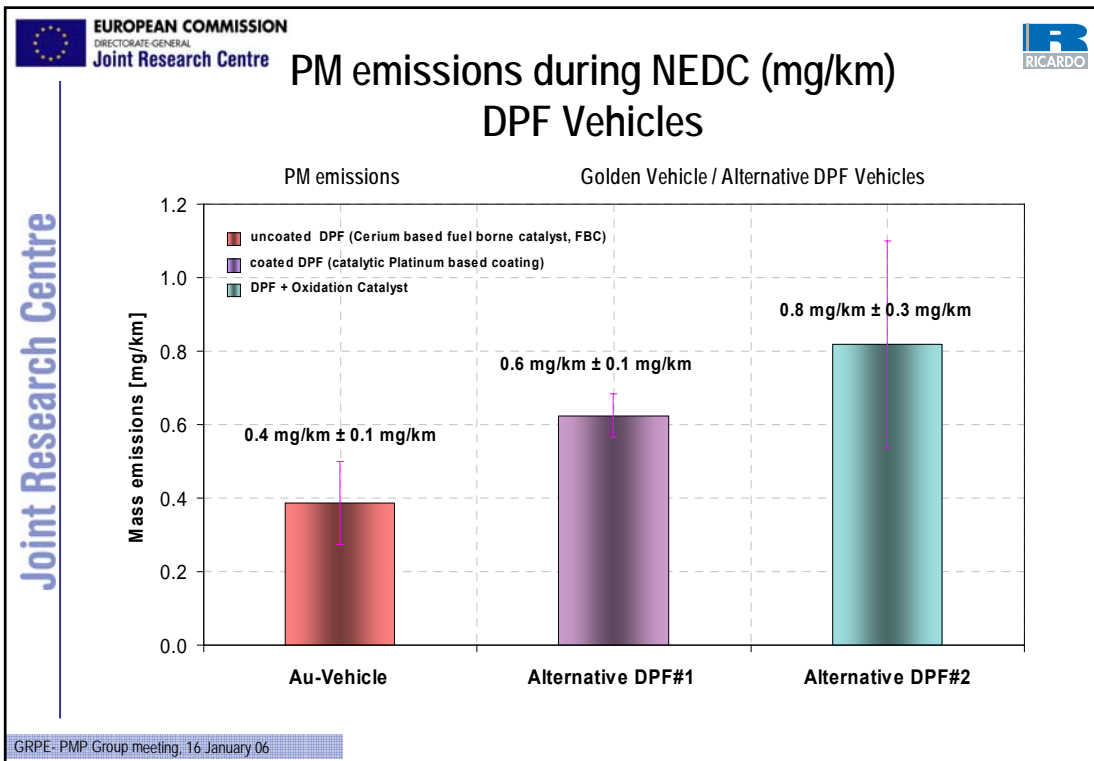
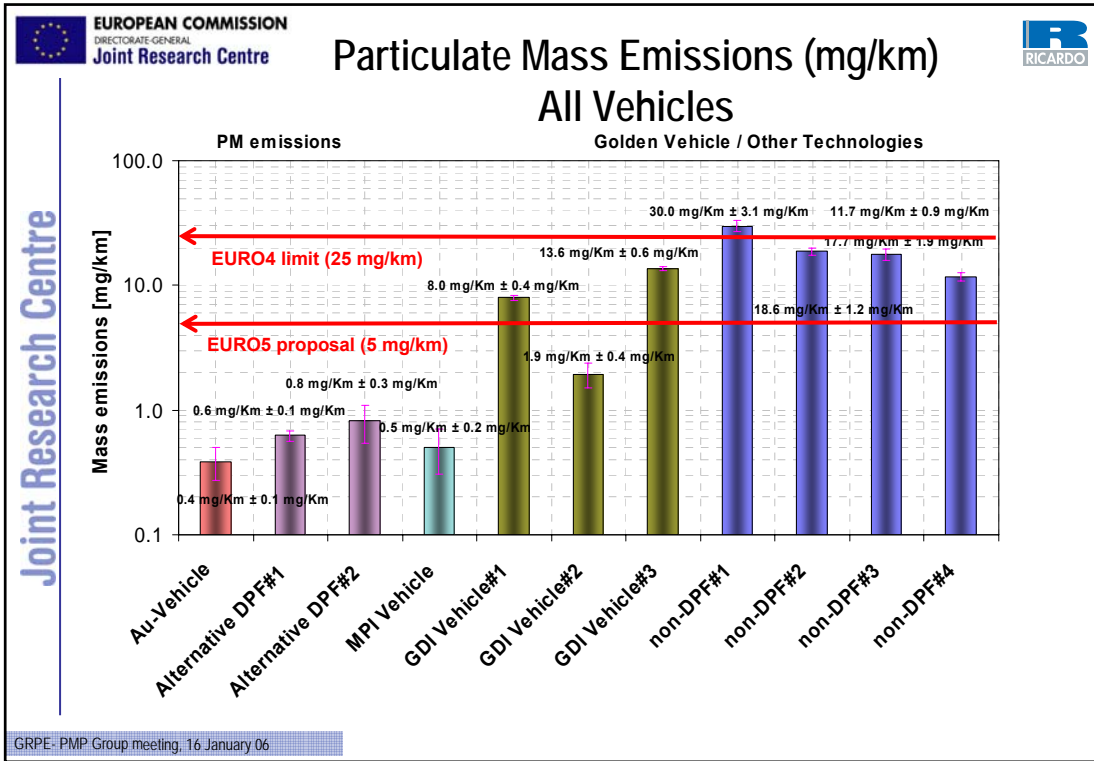
MPI Gasoline Vehicle

11. FIAT, Idea, MPI, EURO-4, 1400cc (JRC-Ispra#2)



PARTICULATE MASS





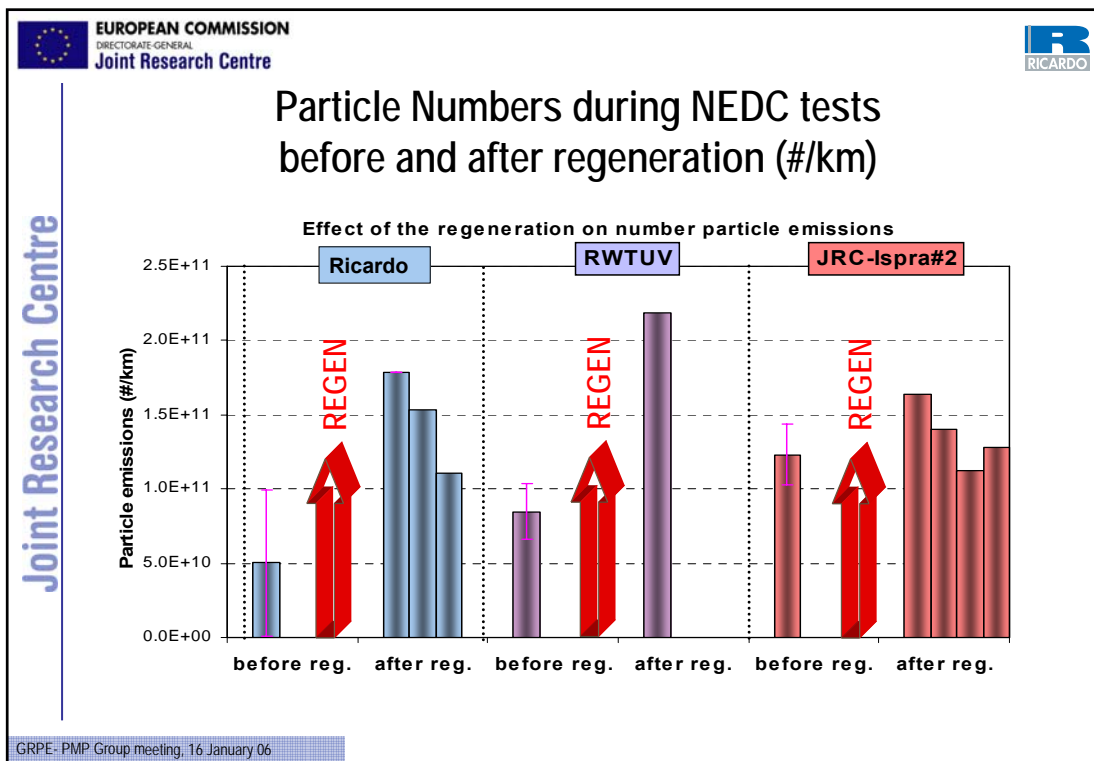
EUROPEAN COMMISSION
DIRECTORATE-GENERAL
Joint Research Centre

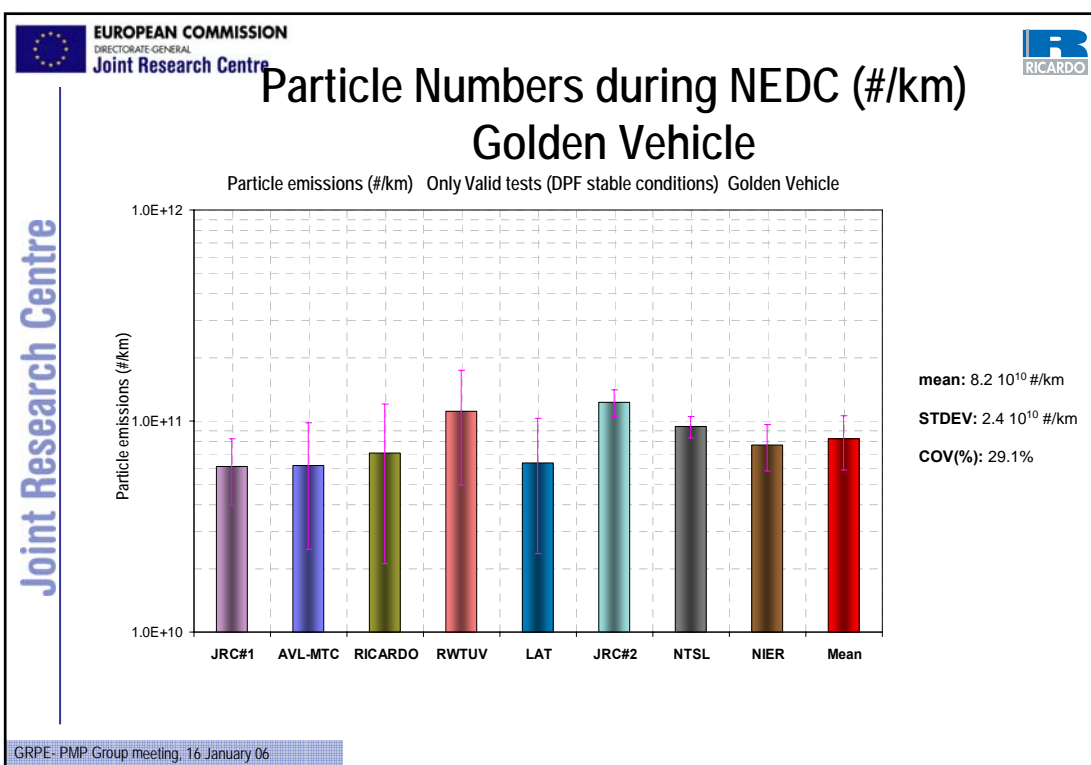
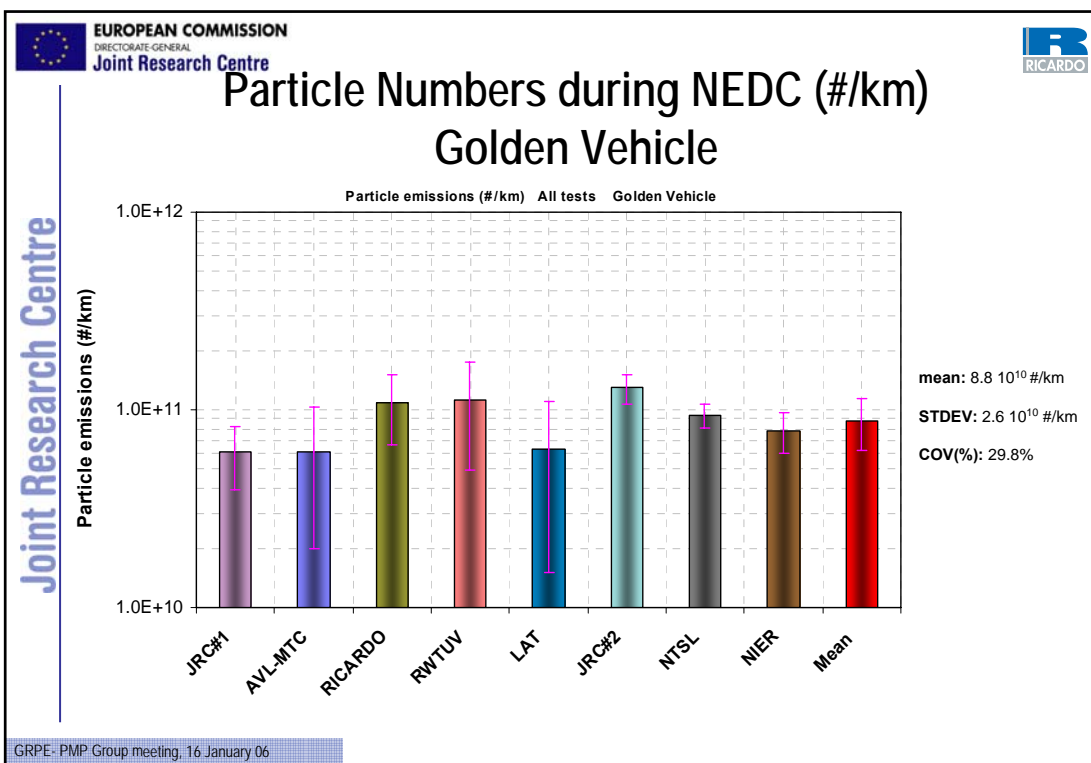
RICARDO

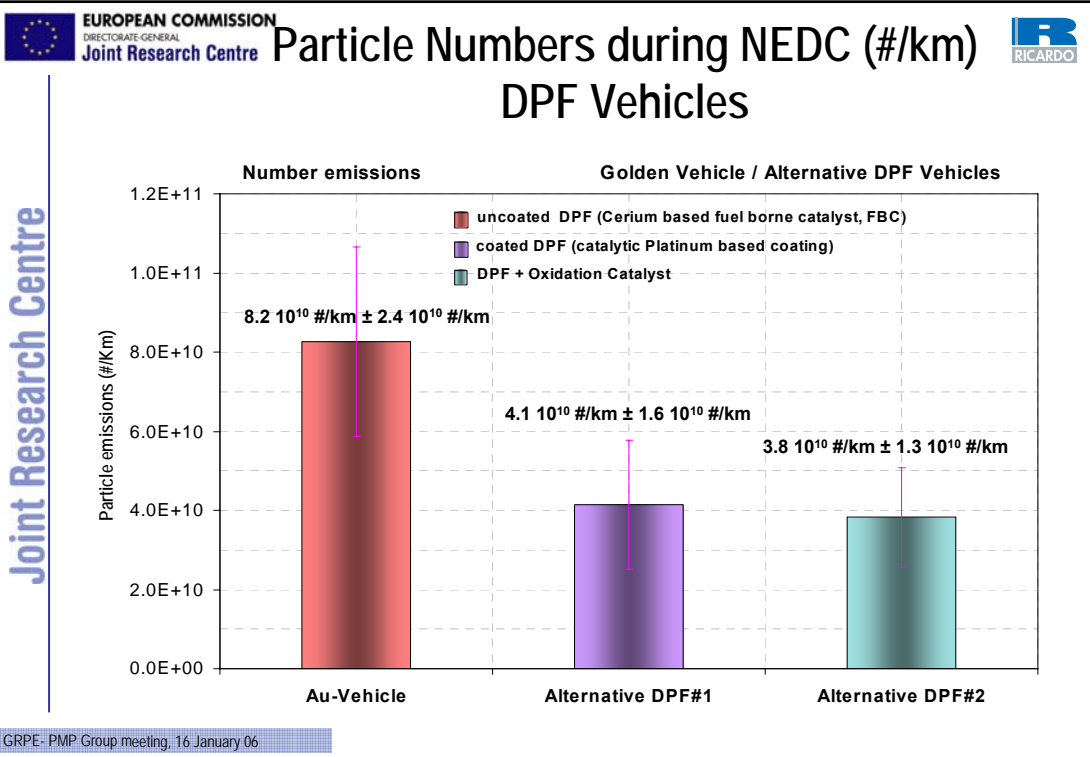
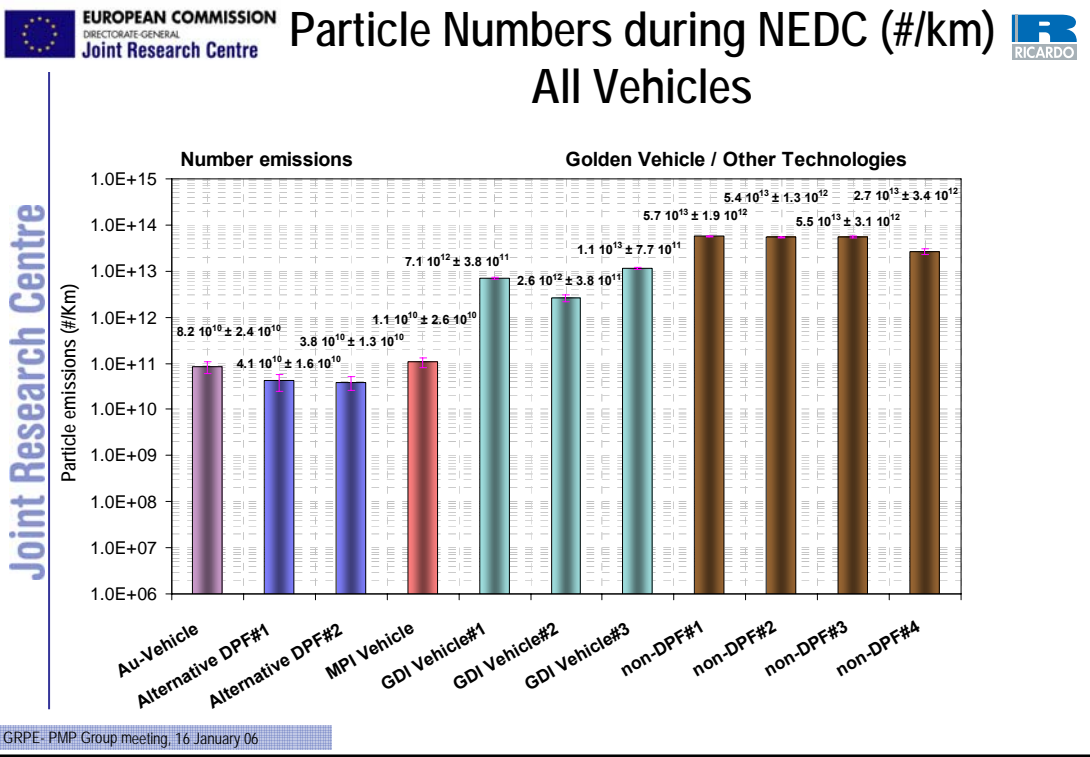
Joint Research Centre

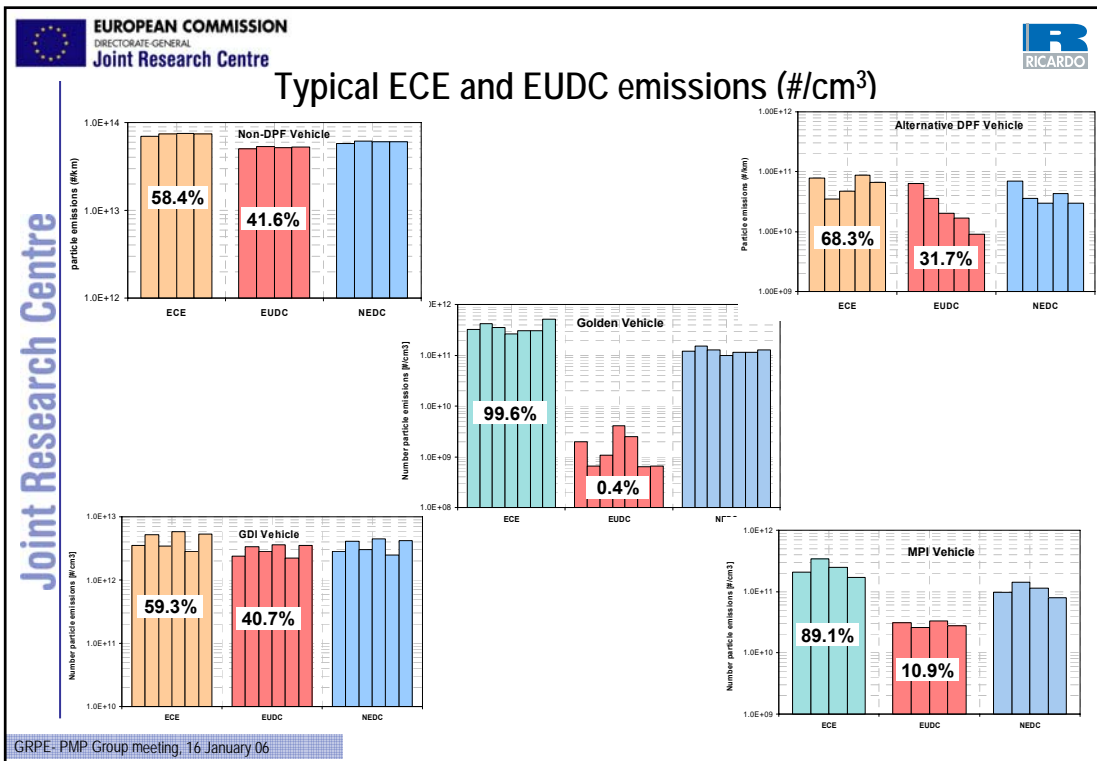
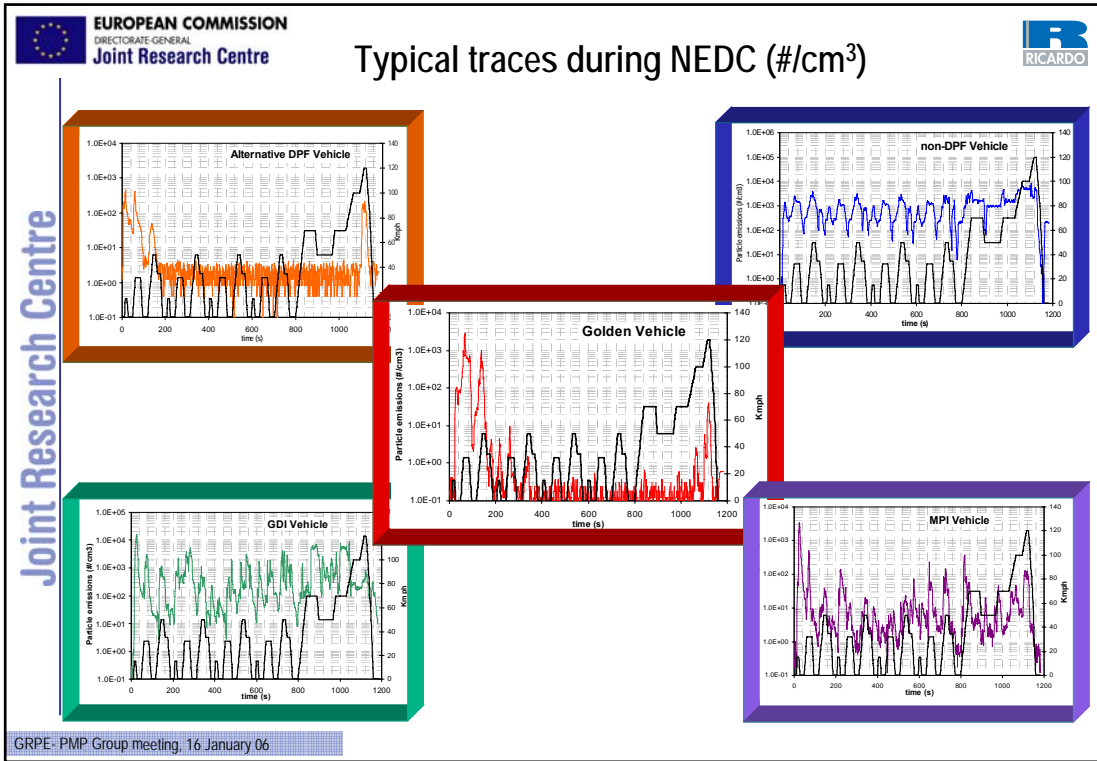
PARTICLE NUMBERS

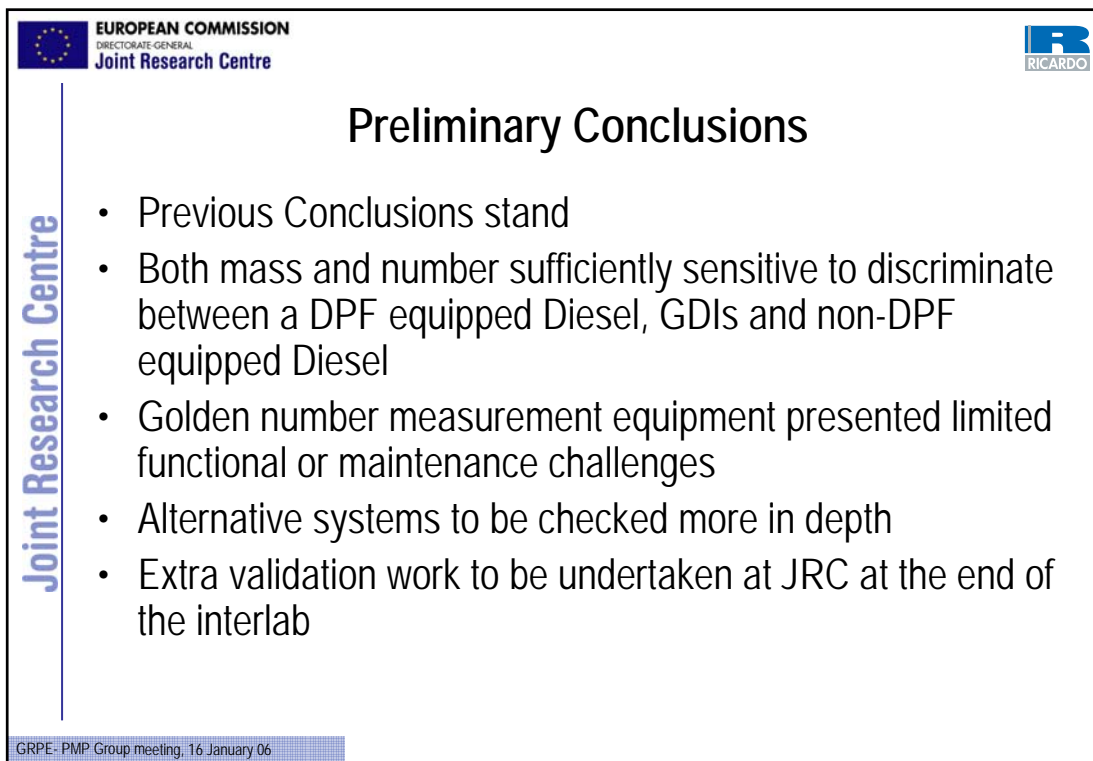
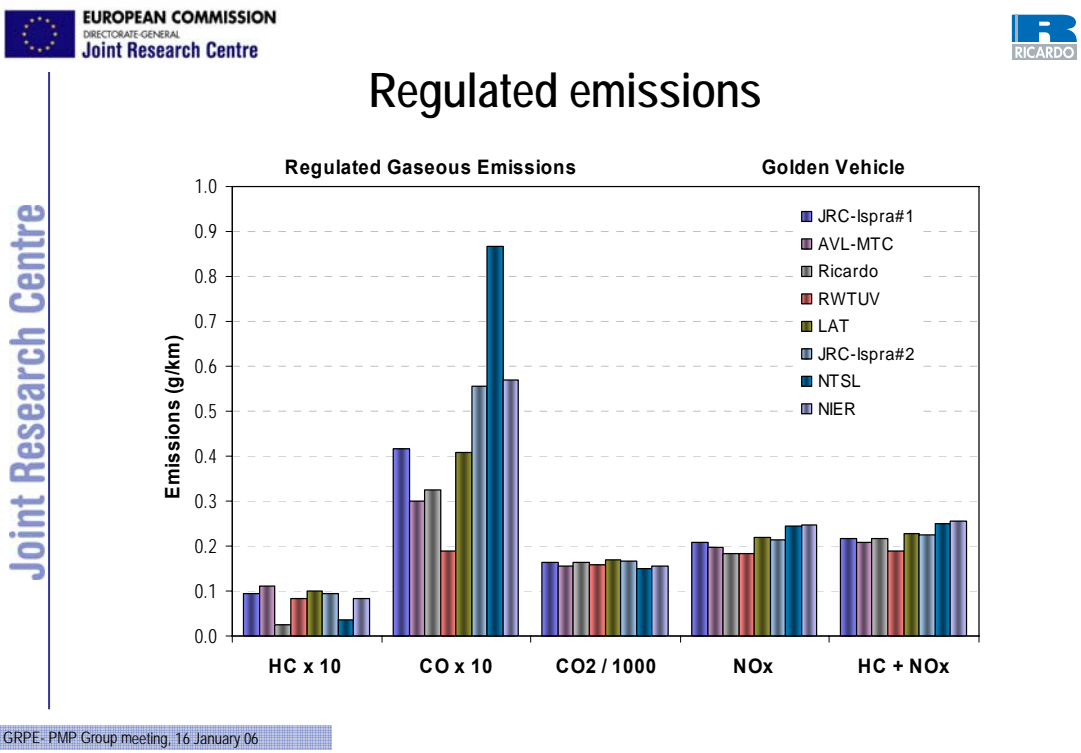
GRPE- PMP Group meeting, 16 January 06













Next Steps

- Finish 2nd part of testing (SHELL, UTAC, JRC)
- Analyse all data and prepare final reports for PMP WG
- Further revision of draft regulatory documents

- Heavy Duty Inter-lab exercise



Heavy Duty Inter-lab Exercise

- Several labs and instrument manufacturers already expressed interest in HD exercise
- Engine still missing
- First technical meeting ?



Heavy Duty Inter-lab Exercise

Labs expressing interest:

1. JRC, EC
2. Xxx, UK
3. AVL-MTC, Sweden
4. UTAC, France
5. VTT, Finland
6. RWTUV, Germany
7. NTSEL, Japan
8. NIER, Korea
9. ETC, Canada
10. CARB, USA

Companies expressing interest:

1. MATTER Engineering
2. HORIBA
3. GRIMM
4. DEKATI
5. AEA Technology



Thank you for your attention!

For further details or questions, please contact

The PMP Interlab Manager:

Penny Dilara

JRC, TP 441,

Ispra, (VA) 21020, Italy

Tel: +39-0332-789207

Fax: +39-0332-786328

E-mail: panagiota.dilara@jrc.it