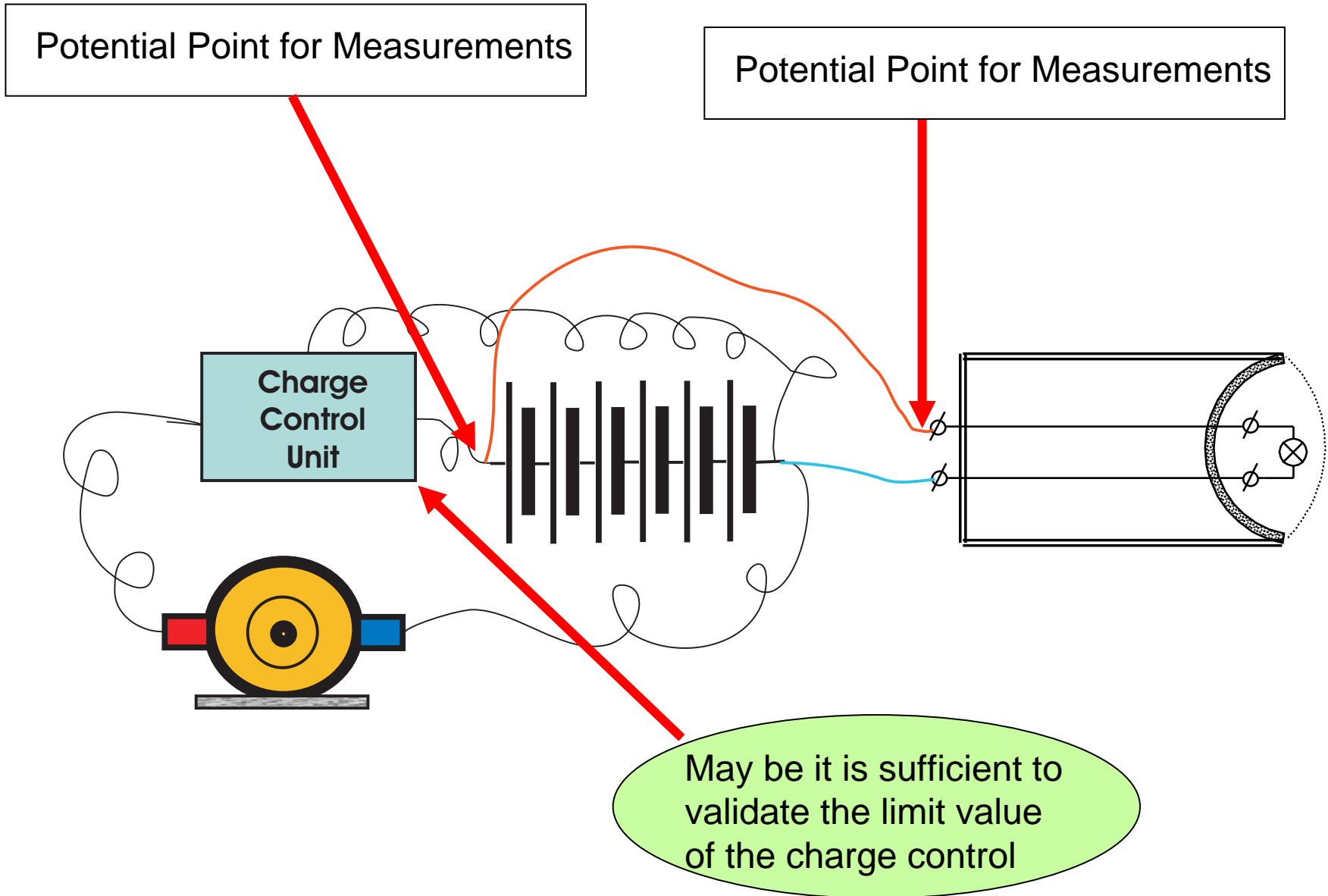


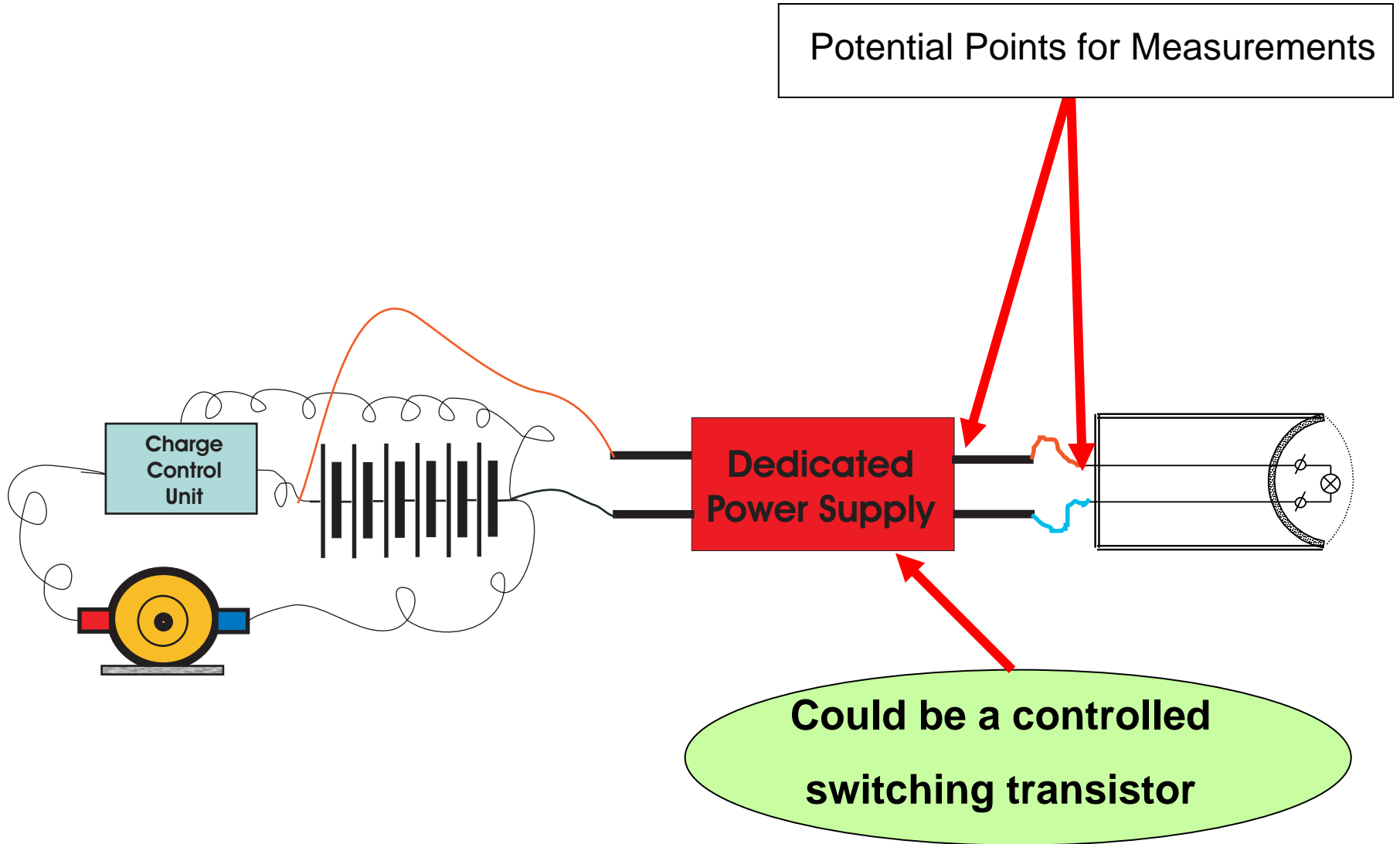
**Possible measurement or verification „scenarios“
in some examples of different vehicle configurations**

**Presented at the OVIG meeting 22. January in Frankfurt
with comments by the Chaireman**

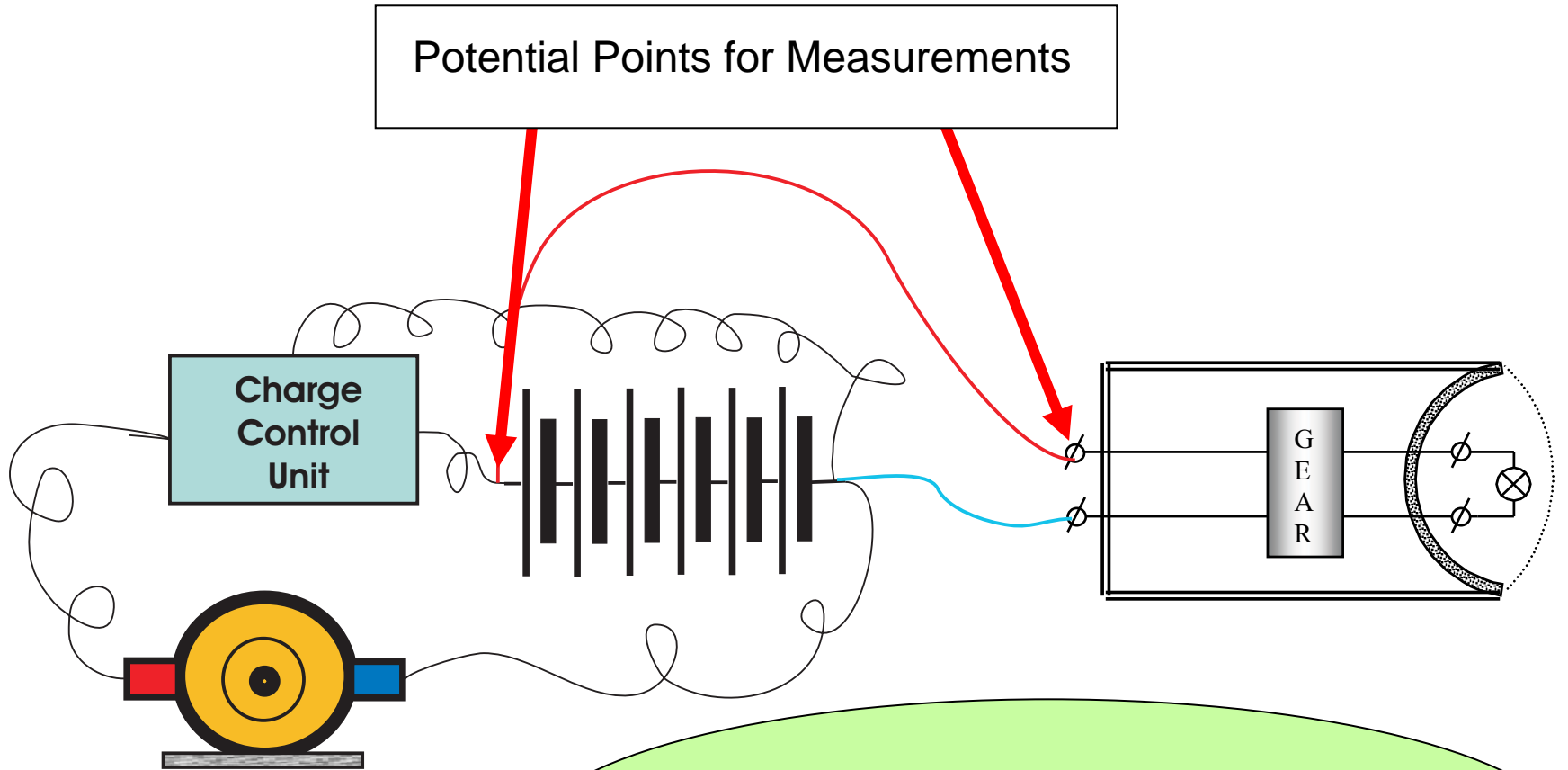
Vehicle without any electronic systems (classic vehicle)



Vehicle with own electronic controlled voltage supply



**Vehicle with or without own electronic controlled voltage supply,
but the lamps are self „stabelized“**



**May be it is sufficient to validate, that the possible
voltage range corresponds to the specification of
the electronic control gear in the lamp!**