



Modernisation of Local Public Services in the Republic of Moldova - MLPS

- Based on bilateral Government negotiations Moldova-Germany Nov 2009
- Duration 6 years: 1/2010 – 12/2015 ... >
- **Main institutional Counterparts: Ministry of Regional Development and Construction and the Regional Development Agencies**
 - Technical Assistance
 - Investment Support
- **German Government** contribution
- Co-Financing by **Romanian Government**
- Co-Financing by **Swedish Government**
- Co-Financing by **European Union**





MLPS Project

Objective > Improved Local Public Services in selected villages and towns in the Republic of Moldova

> Regional sector programming

- Enhanced coordination between institutions on local, regional and central level by **coherent planning & programming** of investments
- **Regional sector planning WSS**
- **Pipeline of projects**, prioritised & ready for implementation

> Local Public Services

- **Investments** in innovative technologies & infrastructure
- Increased **capacities** & modernized management of services
- Rayonal **SEDS WSS** sector chapters
- Enhanced **inter-municipal cooperation & local participation**



Water Supply & Sanitation Regional Sector Programme (WSS RSP)

- **Incorporates sector development needs**, and complies with existing sectoral policies, practices and the relevant strategic framework
- Provides **comprehensive analysis** of the current WSS sector by development region
- Recommends **main directions** for achievement of sector goals at regional level with **appropriate measures**



Water Supply & Sanitation Regional Sector Programme (WSS RSP)

- Provides **transitional strategy for immediate intervention** before regional WSS Plans and/or regional feasibility studies are carried out
- Provides rationale for **identification** of possible project concepts that feed into a **project pipeline**
- Contributes to **decision-making on funding** and attracting investment sources



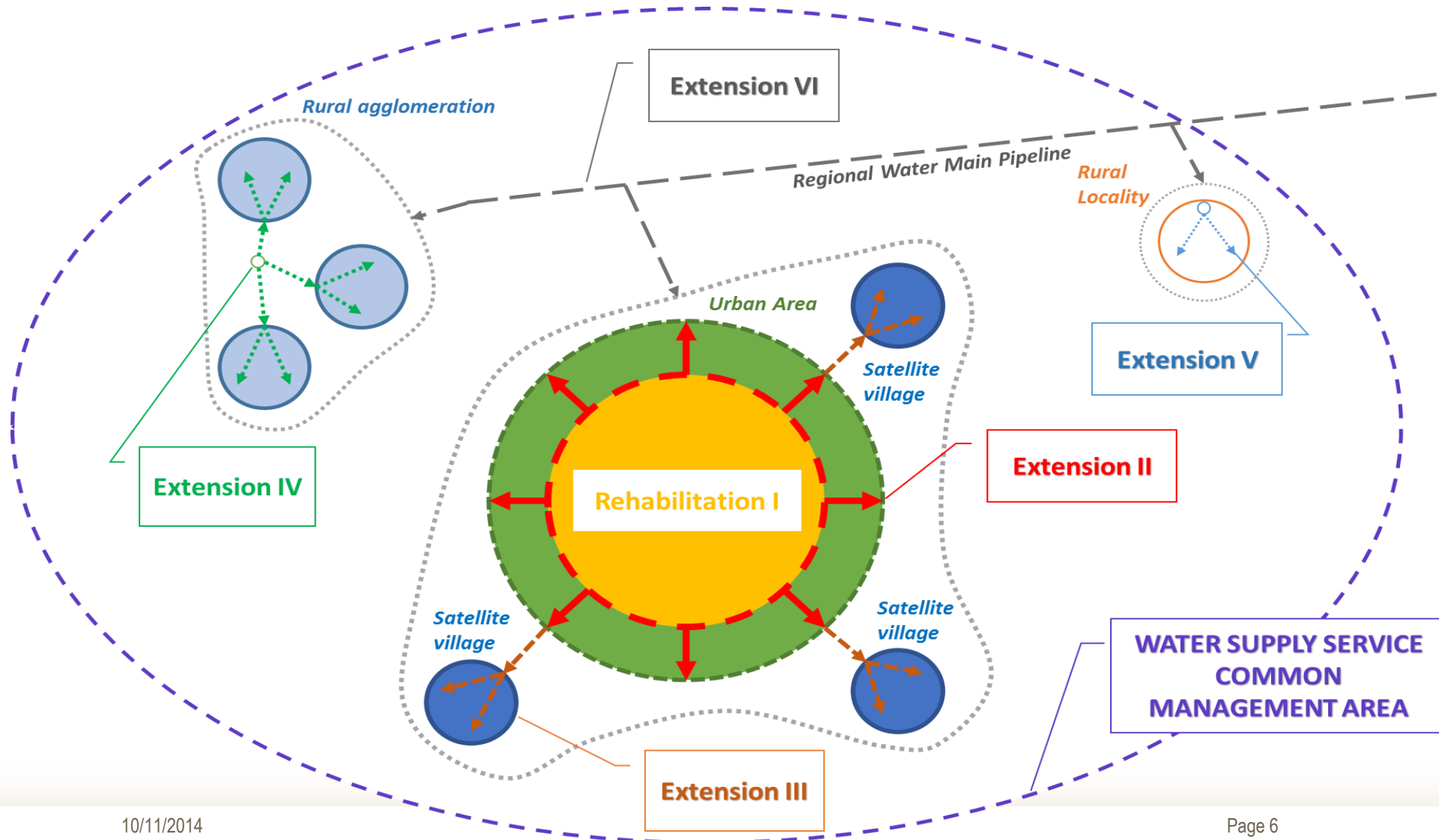
WSS RSP – Identification of Priority Projects

Based on **structured approach**: RSP identifies long list of priority projects (possible project concepts).

- Renovation/rehabilitation and extension of the existing water supply systems in urban areas
- Extension of the existing urban networks to neighbouring rural localities
- Renovation and extension of the existing water supply systems in rural areas
- Construction of new water supply systems in the uncovered rural areas to achieve the total rural coverage targets.

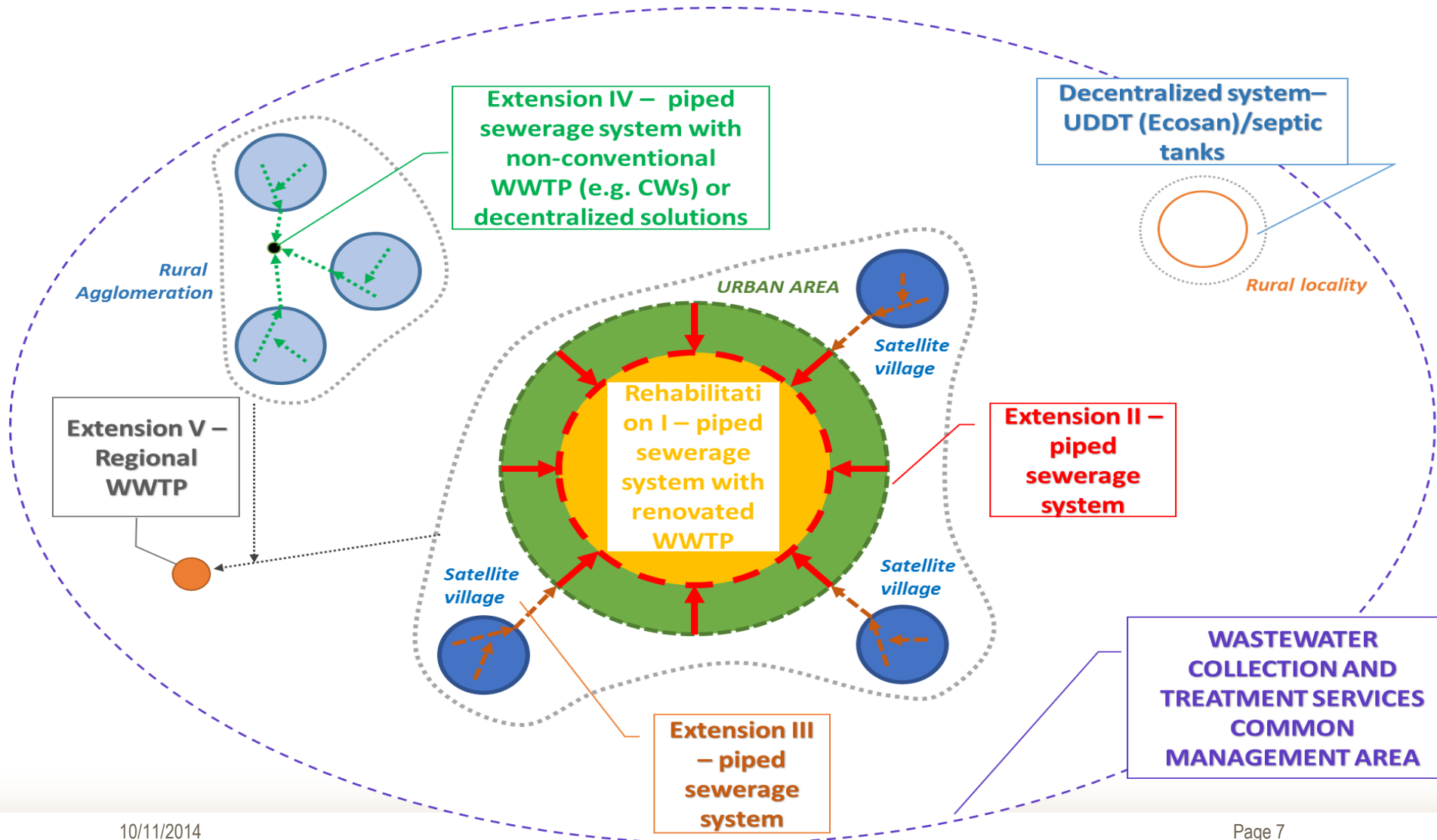


Development of water supply services - Approach





Development of wastewater services - Approach





WSS RSP – Project Pipeline

- **Possible Project Concept (PPC)** – candidate project that is consistent with WSS RSP
- **Viable Project Concept (VPC)** – PPC that has been further developed to review financial, economic, legal, technical, institutional and socio-economic sustainability
- **Ready-to-Go-Project** that is ready for financing (tender book and appropriate level of designs)



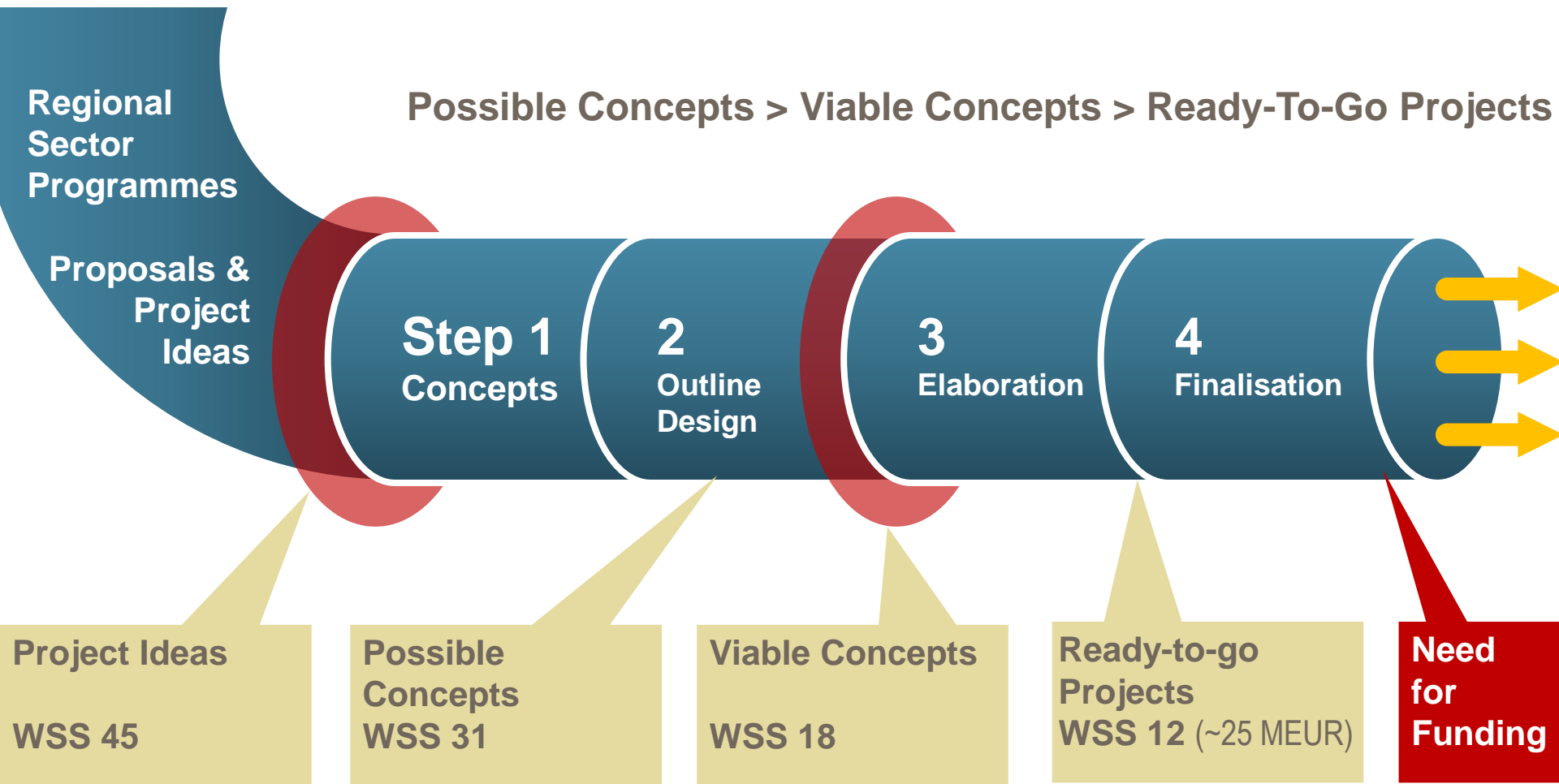
WSS RSP – Project Pipeline

Messages > financing institutions & organisations

- Be informed on **key decision points** – list of PPCs, VPCs and projects are ready to be developed as “ready to go”
- **Consider WSS RSP and project pipeline for programming, activity planning & allocation of funds**
- Consider to take over projects at any time during the process



Project Pipeline > Priorities

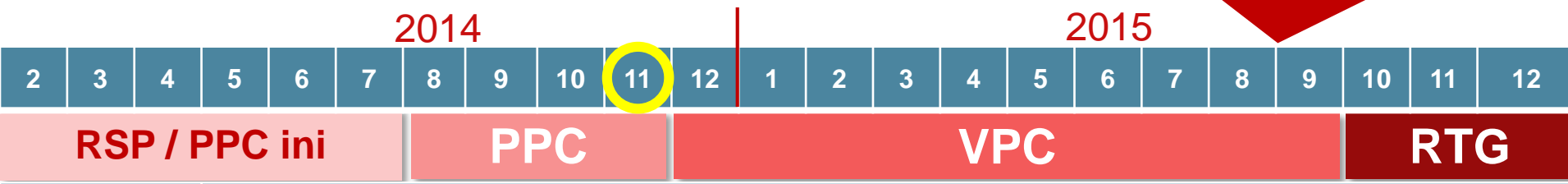


WSS = Water supply & sanitation, MEUR = Million €



Indication of available funding required !!! ...

Project Pipeline Phases



PHASE	
RSP / PPC init.	Based on RSP-WSS, Raions propose Possible Project Concepts (PPCs) ; ~45 PPCs presented for MLPS review.
PPC	PPC check against a set of criteria; Estimated ~31 PPCs proposed to RSWG & approved by MRDC / Min of Env; Selected estimated ~18 > Approved >
VPC	Viable Project Concept (VPC). + Feasibility Study, Environmental Impact Assessment & Concept Design > Pre-finalisation stage > ~12 > Approved
RTG	Funding available? > Completion + Detailed Design, Tender book, Permissions, ... > Readiness to launch (international) tenders > Ready To Go ...



MLPS Pilot Projects WSS sector

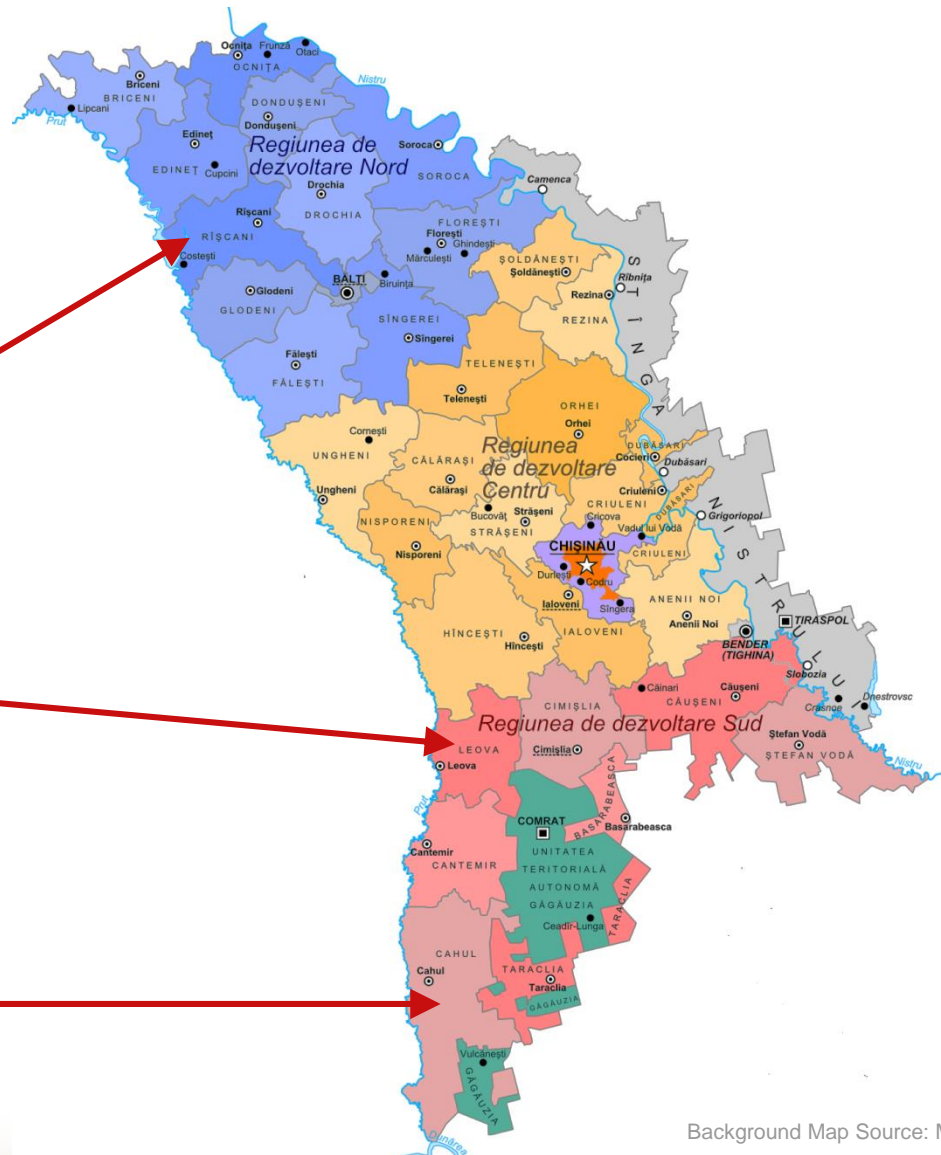
Îmbunătățirea **serviciilor AAC**
în raionul Rîșcani
Improvement of **WSS services**
in Riscani Rayon



Îmbunătățirea **serviciilor AAC**
în raionul Leova
Improvement of **WSS services**
in Leova Rayon



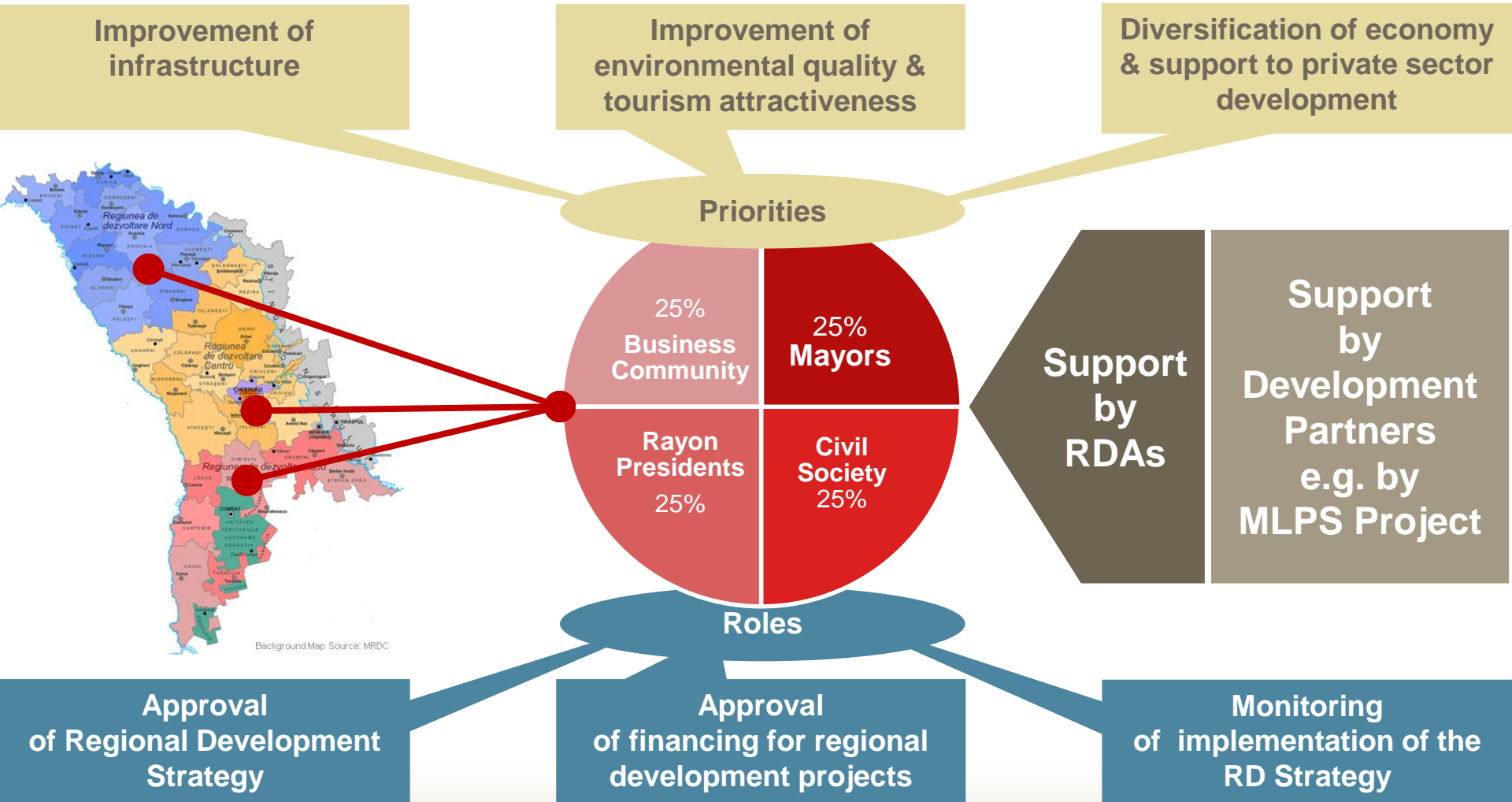
Îmbunătățirea **serviciilor AAC**
în localitățile raionului
Cahul
Improvement of **WSS services**
in Cahul Rayon



Background Map Source: MRDC



Regional Development Councils / working through Partner systems





Support through Partner Systems

**GIZ MLPS
Project**

**Advisors
Experts
Grants
Joint Coordination
& Planning**

**Ministry for Regional
Development & Construction**

Policy, §§-Frame, Strategy,
Financing RDAs

**Regional Development Agency
(3 x > North, Center, South)**

Secretariat to Regional
Development Councils,
Regional Sector Plans,
Implementation of local projects

**Regional Development Council
(3 x > North, Center, South)**

Monitoring & Evaluation
Approval of Programmes, Plans
& Projects

Implementation of local projects

Planning, Procurement, Supervision, Hand-over, Operation

Public Utility

Improvement of
infrastructure &
service delivery

Commune

Owner,
IMC-Participant

Rayon / District

Strategic Planning,
IMC-Facilitator

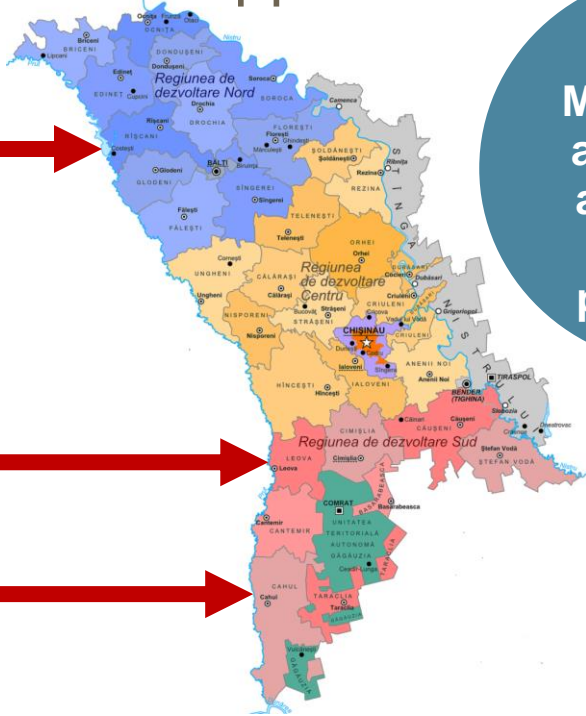
Active Citizens

involved
Participant

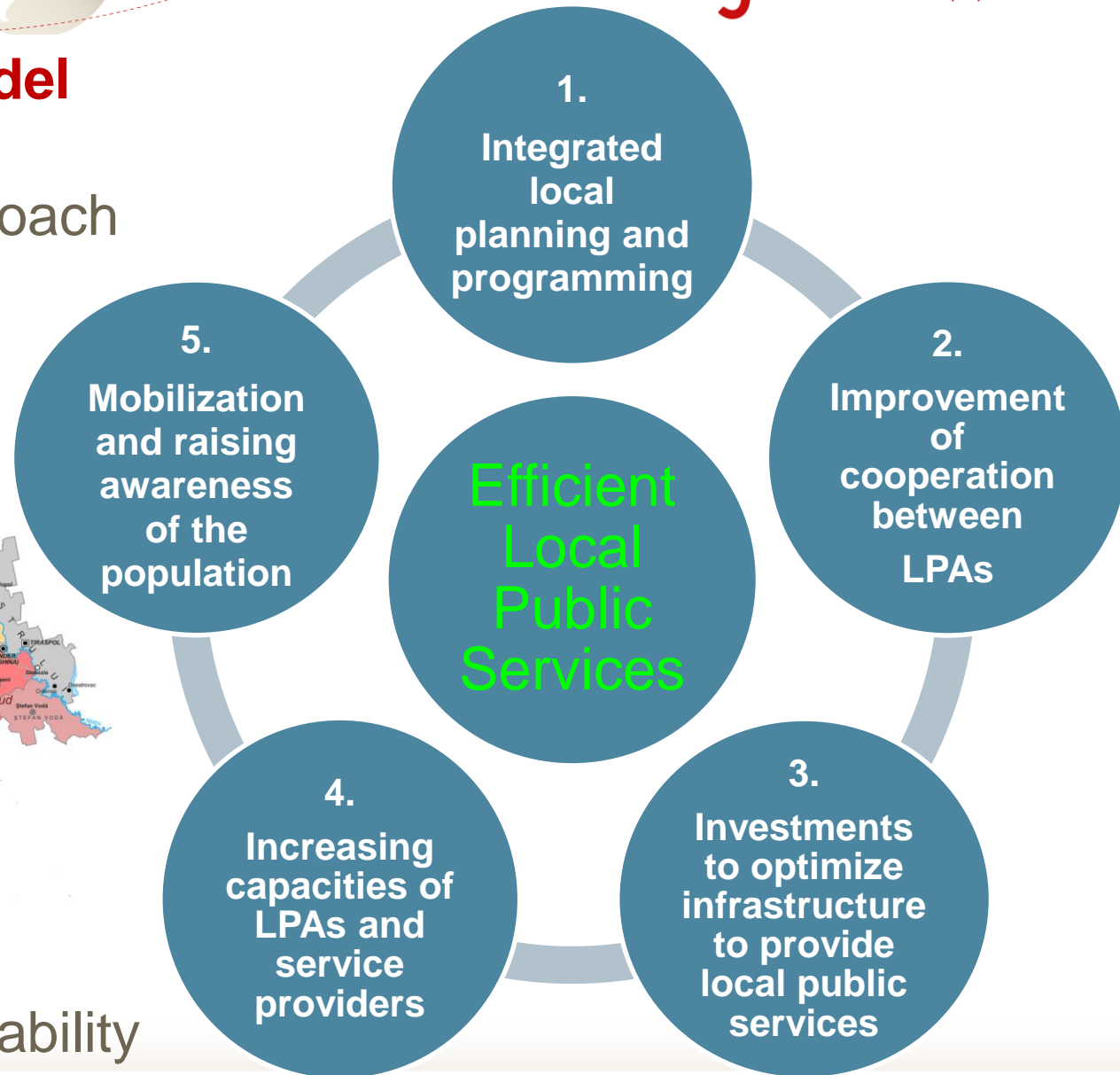


5-Pillar Support Model

Comprehensive approach
... tested & applied



Balanced ...
for enhanced sustainability





1. Local Strategic Planning and Programming

Integrated / compiled at level of rayons / according to primarias' needs & regional / national sectorial priorities = Process

Riscani and Cahul Rayons

- Harmonization of LPA1 Strategic Plans with rayonal SEDSs

Leova Rayon

- update SEDS (-WSS)
- Feasibility study “Water Supply Iargara Area”

(SEDS = Social-Economic Development Strategies, sector-wise elaborated)



2. Inter-municipal Cooperation

> Rayonal SEDSs ~ framework / base-layer for LPA cooperation & development of cooperation concepts

Cahul Rayon

- Institutionalisation of WSS services, 3 primarias

Riscani Rayon

- Institutionalisation of WSS services, 10 primarias (Prut cluster)



3. Improving Service Infrastructure

- > Based on strategic planning & programming phase
- > Investments > improving access, quality & efficiency of local public services

WSS > Riscani, Cahul, Leova

- Capital investments * & acquisition of equipment*
- Financed by German Investment Support (GIS)
- Based on Financing Agreements between Moldovan and German Governments & MoUs.
- GIZ HQs, MRDC & RDAs / GIZ Moldova, RDAs & beneficiaries
- Modus: applying partner systems – procurement through RDAs



3*. Capital investments & acquisition of equipment

Riscani Rayon (Prut Cluster)

- > Costesti – Vehicles & WWT plant & sewerage system extension, Utility office rehabilitation
- > Duruitoarea Veche – Water supply system & Sewerage system construction

Cahul Rayon

- > Rosu – Extension of sewerage system
- > Cahul – Rehabilitation of drinking water purification plant

Leova Rayon

- > SEDS & FStudy WS sector (**2.5 Mio. € for investments secured**)



4. Capacity Development of LPAs & and Service Providers

- > improved capacities to manage & maintain improvements
- > e.g. re planning, organizing, implementing, service delivery, fee collection, customer relations, tariffs, monitoring and evaluation ...
- Specific capacity development programmes
- implemented with development partners, e.g. AMAC
- Gender mainstreaming integral part
- Scaling-up of experiences via participation of national sector entities



5. Community mobilization & citizens' engagement

- > Improvement of local public services = client related activity
- > Citizens = clients / customers
- > Customer relation & gender balanced citizen involvement

Specific activity bundles on community mobilization, planning and citizen engagement

Riscani, Leova and Cahul Rayons

- Improving WSS services



... & any comments or ???s



**Ministerul Dezvoltării
Regionale și Construcțiilor**



Mulțumesc pentru atenție
Thank you for your attention

Petru VEVERIȚA, Dietrich HAHN

Agenția de Cooperare Internațională a Germaniei (GIZ)
German Development Cooperation through GIZ
Chișinău, Bernadazzi str. 66, Moldova
T + 373 22 22-83-19
F + 373 22 00-02-38
Internet: www.giz.de, www.serviciilocale.md