



Reversing Alarm

Park Jinwoo, Chief Researcher
(truehelp@ts2020.kr)

KOTSA (Korea Transportation Safety Authority)

KATRI (Korea Automobile Testing & Research Institute)

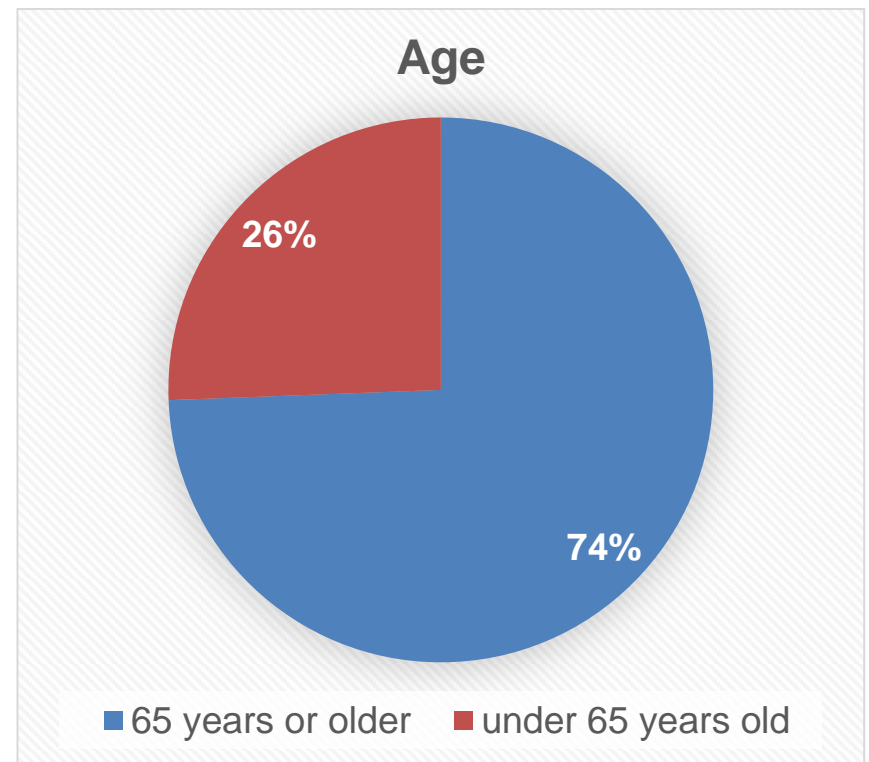
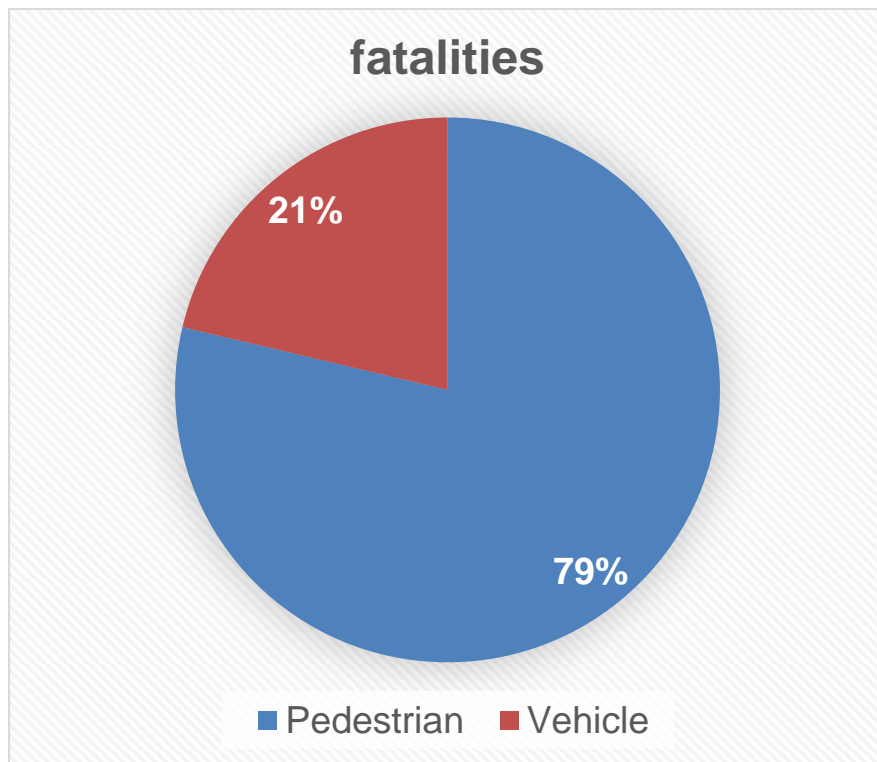
Accidents due to reversing

◆ Accident video



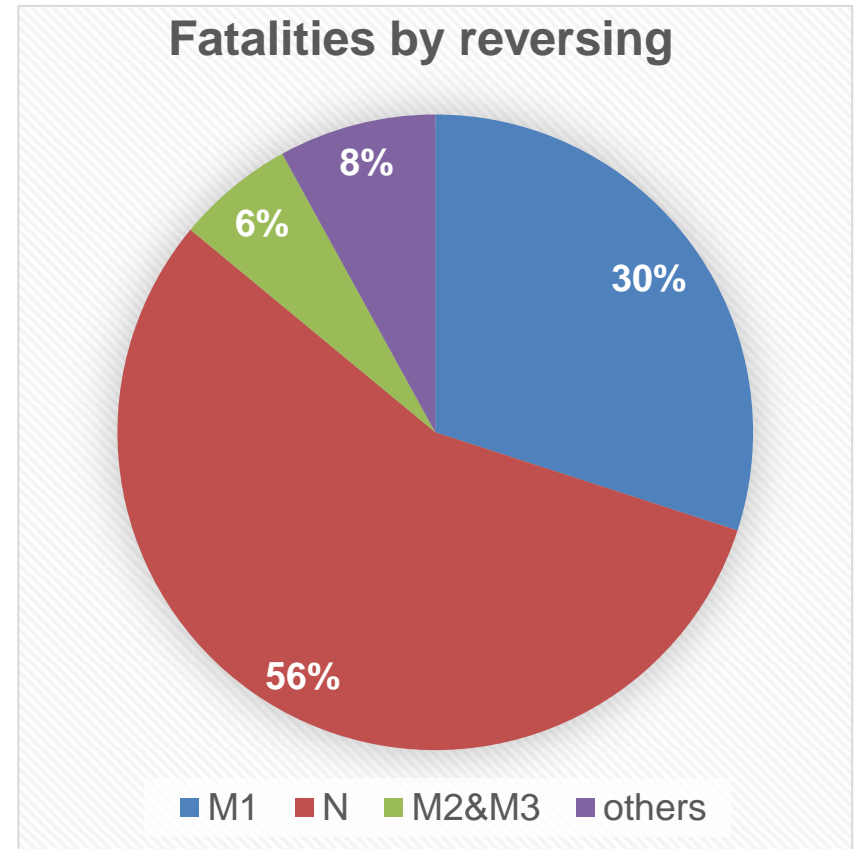
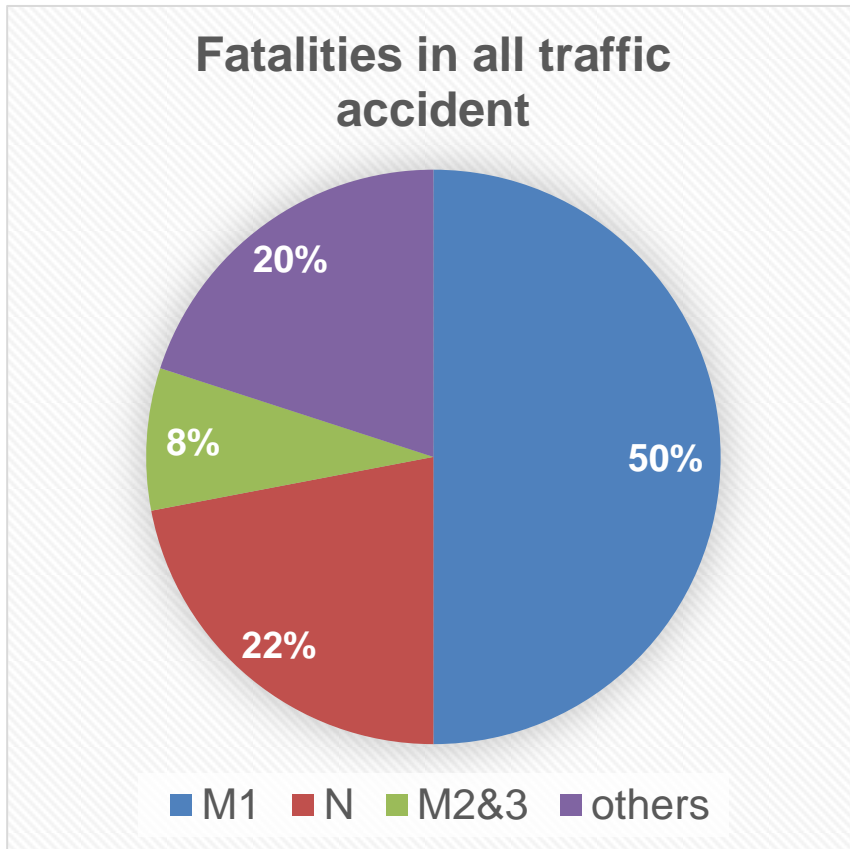
Accidents due to reversing (2010~2012)

◆ Who was involved in the accident and dead?



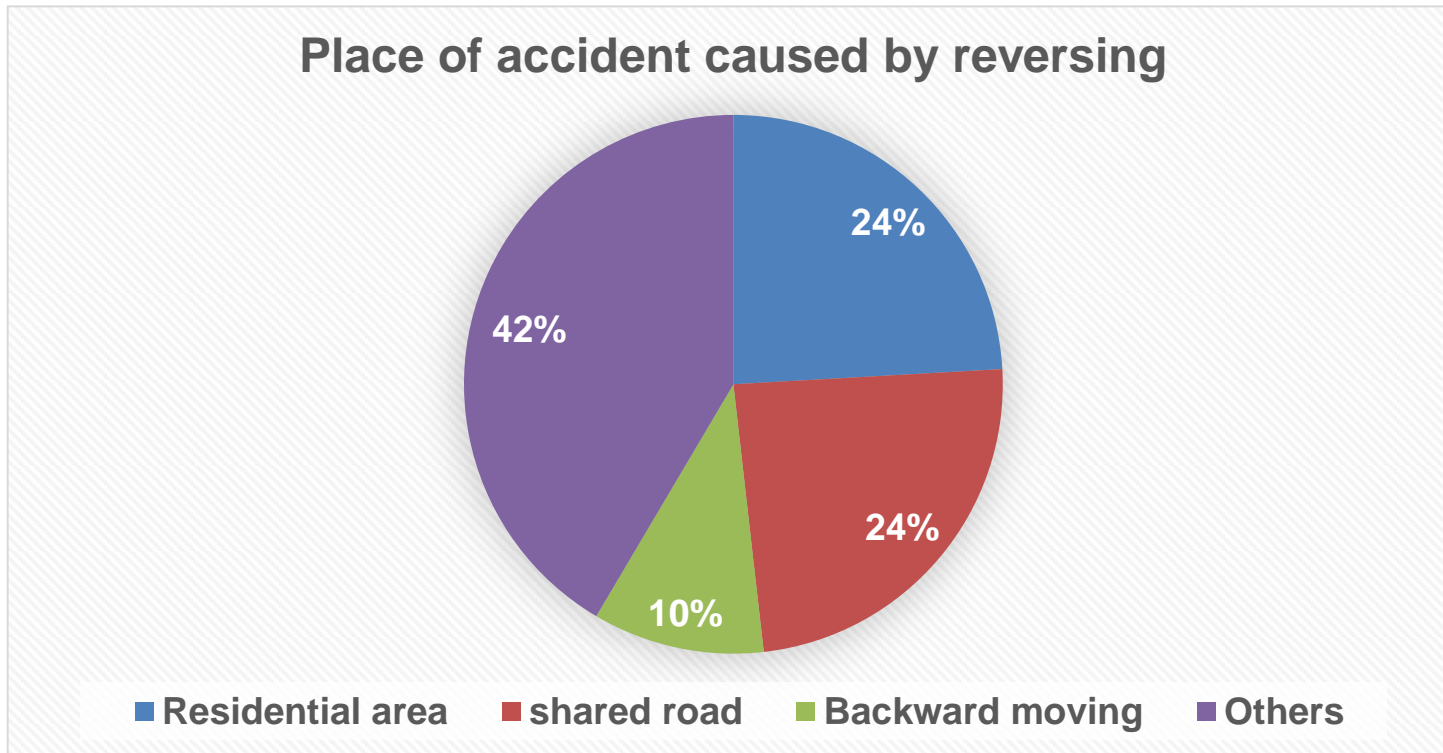
Accidents due to reversing (2010~2012)

◆ Which vehicles involved in accidents



Accidents due to reversing (2010~2012)

◆ Place of accident due to reversing



- ◆ General fatal accidents occurred mainly in the evening but the deaths by reversing accidents occurred mainly during daytime rather than night time.

Reversing alarm in KMVSS

◆ Reversing alarm regulation in Korea

The vehicles(N3, Van, Box truck, school bus) shall have rear view camera or rear detecting sensor(Alarm signal for driver) or **reversing alarm device** when it move to backward.

N3 & Van



Box type



School bus





Conclusion

◆ Proposal

- Scope : Include N2, M2, School bus, Box-type truck besides N3 and M3.(If it is possible, include N1 also)
- Pause switch : prohibited.
- In case of school-bus, the vehicle should have both rear view camera and reversing alarm for preventing accident of children.
- Microphone height : One point(ex : 1.2m)
 - Reversing alarm sound is beep sound not continuous sound, so it is not easy to find the maximum or minimum sound between 0.5m and 1.5m.

Thank you!

