

**Economic and Social Council**Distr.: General
27 February 2014

Original: English

Economic Commission for Europe**Inland Transport Committee****World Forum for Harmonization of Vehicle Regulations****Working Party on Passive Safety****Fifty-fifth session**

Geneva, 19–23 May 2014

Item 19 of the provisional agenda

**Proposal for a new Regulation on hydrogen
and fuel cell vehicles****Draft Regulation on hydrogen and fuel cell vehicles****Submitted by the experts from the European Commission and the
International Organization of Motor Vehicle Manufacturers ***

The text reproduced below was prepared jointly by the experts from the European Commission and the International Organization of Motor Vehicle Manufacturers (OICA), proposing to establish a new UN Regulation annexed to the 1958 Agreement based on the UN Global Technical Regulation (UN GTR) No. 13 on hydrogen and fuel cell vehicles (ECE/TRANS/180/Add.13). The numbering of items in Part 1 of Annex 1 are drafted according to the corresponding Annexes of future Regulation No. 0 on International whole Vehicle Type Approval (IWVTA). This document supersedes ECE/TRANS/WP.29/GRSP/2013/22 and reflects the results of informal discussions among the experts of the European Commission, Japan and OICA, as a follow up of discussion held at the fifty-fourth session of GRSP (ECE/TRANS.WP.29/GRSP/54, para.31). The modification to the text of ECE/TRANS/WP.29/GRSP/2013/22 are marked in bold for new or strikethrough for deleted characters.

* In accordance with the programme of work of the Inland Transport Committee for 2010–2014 (ECE/TRANS/208, para. 106 and ECE/TRANS/2010/8, programme activity 02.4), the World Forum will develop, harmonize and update Regulations in order to enhance the performance of vehicles. The present document is submitted in conformity with that mandate.

Uniform provisions concerning the approval of motor vehicles and their components with regard to the safety-related performance of hydrogen-fuelled vehicles

Contents

	<i>Page</i>
1. Scope	
2. Definitions	
3. Application for approval	
4. Approval	
5. Part I – Specifications of the compressed hydrogen storage system	
6. Part II – Specifications of specific components for the compressed hydrogen storage system	
7. Part III – Specifications of a vehicle fuel system incorporating the compressed hydrogen storage system	
8. Part IV – Specifications of the liquefied hydrogen storage system (LHSS)	
9. Part V – Specifications of specific components for liquefied hydrogen storage system (LHSS)	
10. Part VI – Specifications of vehicle fuel system incorporating LHSS.....	
811. Modification of type and extension of approval.....	
912. Conformity of production	
1013. Penalties for non-conformity of production	
1114. Production definitely discontinued	
1215. Names and addresses of Technical Services responsible for conducting approval tests, and of the Type Approval Authorities.....	
1316. Transitional provisions.....	

Annexes

1	Part 1 Model I - Information document No ... on the type approval of a hydrogen storage system with regard to the safety-related performance of hydrogen-fuelled vehicles Model II - Information document No ... on the type approval of specific component for a hydrogen storage system with regard to the safety-related performance of hydrogen-fuelled vehicles
	Model III - Information document No ... on the type approval of a vehicle with regard to the safety-related performance of hydrogen-fuelled vehicles
	Part 2 Communication
2	Arrangements of the approval marks
3	Test procedures for compressed hydrogen storage system.....
4	Test procedures for specific components for compressed hydrogen storage system

Appendix 1 - Overview of TPRD tests
Appendix 2 - Overview of check valve and automatic shut-off valve tests
5 Test procedures for vehicle fuel system incorporating compressed hydrogen storage system.....
~~6 Test procedures for LHSS
7 Test procedures for specific components for LHSS
8 Test procedure for vehicle fuel system incorporating LHSS.....~~

1. Scope

This Regulation is based on global technical regulation No. 13. However, it does not include requirements with respect to electrical safety, which are already included in existing Regulations Nos. 12, 94, 95 and 100.

This Regulation applies to:

- 1.1. Part I - Compressed hydrogen storage systems for hydrogen-fuelled vehicles on their safety-related performance.
- 1.2. Part II - Specific components for compressed hydrogen storage systems for hydrogen-fuelled vehicles on their safety-related performance.
- 1.3. Part III - Hydrogen-fuelled vehicles of {category M and N¹} incorporating compressed hydrogen storage system on its safety-related performance.
- ~~1.4. Part IV - Liquefied hydrogen storage systems (LHSS) for hydrogen fuelled vehicles on their safety related performance.~~
- ~~1.5. Part V - Specific components for liquefied hydrogen storage systems (LHSS) for hydrogen fuelled vehicles on their safety related performance.~~
- ~~1.6. Part VI - Hydrogen fuelled vehicles of {category M and N¹} incorporating liquefied hydrogen storage system (LHSS) on its safety related performance.~~

2. Definitions

For the purpose of this Regulation, the following definitions shall apply:

- 2.1. "*Burst disc*" means the non-reclosing operating part of a pressure relief device which, when installed in the device, is designed to burst at a predetermined pressure to permit the discharge of compressed hydrogen.
- 2.2. "*Check valve*" means a non-return valve that prevents reverse flow in the vehicle fuel line.
- 2.3. "*Compressed hydrogen storage system (CHSS)*" means a system designed to store hydrogen fuel for a hydrogen-fuelled vehicle and composed of a pressurized container, pressure relief devices (PRDs) and shut off device(s) that isolate the stored hydrogen from the remainder of the fuel system and its environment.
- 2.4. "*Container*" (for hydrogen storage) means the component within the hydrogen storage system that stores the primary volume of hydrogen fuel.
- 2.5. "*Date of removal from service*" means the date (month and year) specified for removal from service.
- 2.6. "*Date of manufacture*" (of a compressed hydrogen container) means the date (month and year) of the proof pressure test carried out during manufacture.

¹ As defined in the Consolidated Resolution on the Construction of Vehicles (R.E.3.), document ECE/TRANS/WP.29/78/Rev.2, para. 2. - www.unece.org/trans/main/wp29/wgs/wp29gen/wp29resolutions.html

- 2.7. "*Enclosed or semi-enclosed spaces*" means the special volumes within the vehicle (or the vehicle outline across openings) that are external to the hydrogen system (storage system, fuel cell system and fuel flow management system) and its housings (if any) where hydrogen may accumulate (and thereby pose a hazard), as it may occur in the passenger compartment, luggage compartment and space under the hood.
- 2.8. "*Exhaust point of discharge*" means the geometric centre of the area where fuel cell purged gas is discharged from the vehicle.
- 2.9. "*Fuel cell system*" means a system containing the fuel cell stack(s), air processing system, fuel flow control system, exhaust system, thermal management system and water management system.
- 2.10. "*Fuelling receptacle*" means the equipment to which a fuelling station nozzle attaches to the vehicle and through which fuel is transferred to the vehicle. The fuelling receptacle is used as an alternative to a fuelling port.
- 2.11. "*Hydrogen concentration*" means the percentage of the hydrogen moles (or molecules) within the mixture of hydrogen and air (equivalent to the partial volume of hydrogen gas).
- 2.12. "*Hydrogen-fuelled vehicle*" means any motor vehicle that uses compressed gaseous or liquefied hydrogen as a fuel to propel the vehicle, including fuel cell and internal combustion engine vehicles. Hydrogen fuel for passenger vehicles is specified in ISO 14687-2 and SAE J2719.
- 2.13. "*Luggage compartment*" means the space in the vehicle for luggage and/or goods accommodation, bounded by the roof, hood, floor, side walls, being separated from the passenger compartment by the front bulkhead or the rear bulkhead.
- 2.14. "*Liquefied hydrogen storage system (LHSS)*" means liquefied hydrogen storage container(s) PRDs, shut-off device, a boil-off system and the interconnection piping (if any) and fittings between the above components.
- 2.15. "*Manufacturer*" means the person or body responsible to the approval authority for all aspects of the type approval process and for ensuring conformity of production. It is not essential that the person or body is directly involved in all stages of the construction of the vehicle, system or component which is the subject of the approval process.
- 2.16. "*Maximum allowable working pressure (MAWP)*" means the highest gauge pressure to which a pressure container or storage system is permitted to operate under normal operating conditions.
- 2.17. "*Maximum fuelling pressure (MFP)*" means the maximum pressure applied to compressed system during fuelling. The maximum fuelling pressure is 125 per cent of the Nominal Working Pressure.
- 2.18. "*Nominal working pressure (NWP)*" means the gauge pressure that characterizes typical operation of a system. For compressed hydrogen gas containers, NWP is the settled pressure of compressed gas in fully fuelled container or storage system at a uniform temperature of 15 °C.
- 2.19. "*Pressure relief device (PRD)*" means a device that, when activated under specified performance conditions, is used to release hydrogen from a pressurized system and thereby prevent failure of the system.

- 2.20. "*Rupture*" or "*burst*" both mean to come apart suddenly and violently, break open or fly into pieces due to the force of internal pressure.
- 2.21. "*Safety relief valve*" means a pressure relief device that opens at a preset pressure level and can re-close.
- 2.22. "*Service life*" (of a compressed hydrogen container) means the time frame during which service (usage) is authorized.
- 2.23. "*Shut-off valve*" means a valve between the storage container and the vehicle fuel system that can be automatically activated; which defaults to the "closed" position when not connected to a power source.
- 2.24. "*Single failure*" means a failure caused by a single event, including any consequential failures resulting from this failure.
- 2.25. "*Thermally-activated pressure relief device (TPRD)*" means a non- reclosing PRD that is activated by temperature to open and release hydrogen gas.
- 2.26. "*Type of hydrogen storage system*" means an assembly of components which do not differ significantly in such essential aspects as:
- (a) the manufacturer's trade name or mark;
 - (b) the state of stored hydrogen fuel; compressed gas or liquefied;
 - (c) the nominal working pressure (NWP);
 - (d) the structure, materials, capacity and physical dimensions of the container; and
 - (e) the structure, materials and essential characteristics of TPRD, check valve and shut-off valve, if any.
- 2.27. "*Type of specific components of hydrogen storage system*" means a component or an assembly of components which do not differ significantly in such essential aspects as:
- (a) the manufacturer's trade name or mark;
 - (b) the state of stored hydrogen fuel: compressed gas or liquefied;
 - (c) the sort of component: (T)PRD, check-valve or shut-off valve, and
 - (d) the structure, materials and essential characteristics.
- 2.28. "*Vehicle type*" with regard to hydrogen safety means vehicles which do not differ in such essential aspects as:
- (a) the manufacturer's trade name or mark; and
 - (b) the basic configuration and main characteristics of the vehicle fuel system.
- 2.29. "*Vehicle fuel system*" means an assembly of components used to store or supply hydrogen fuel to a fuel cell (FC) or internal combustion engine (ICE).

3. Application for approval

- 3.1. **Part I: Application for approval of a type of the compressed hydrogen storage system.** ~~The application for approval of a vehicle or component type~~

~~with regard to the safety related performance of hydrogen fuelled vehicles shall be submitted by the manufacturer or by his authorized representative.~~

- 3.1.1.** The application for approval of a type of hydrogen storage system shall be submitted by the manufacturer of the hydrogen storage system or by their authorized representative.
- 3.1.2.** A model of information document is shown in Annex 1, Part 1-I.
- 3.1.3.** A sufficient number of hydrogen storage systems representatives of the type to be approved shall be submitted to the Technical Service conducting the approval tests.
- 3.2.** **Part II: Application for approval of a type of specific component for compressed hydrogen storage system** ~~It shall be accompanied by the documents mentioned below and include the following particulars:~~
- 3.2.1.** The application for approval of a type of specific component shall be submitted by the manufacturer of the specific component or by their authorized representative. ~~Detailed description of the vehicle or component type on the safety related performance of hydrogen fuelled vehicles.~~
- 3.2.2.** A model of information document is shown in Annex 1, Part 1-II.
- 3.2.3.** A sufficient number of specific components of hydrogen storage system representatives of the type to be approved shall be submitted to the Technical Service conducting the approval tests.
- 3.3.** **Part III: Application for approval of a vehicle type** ~~A sufficient number of vehicles and/or components representatives of the type to be approved shall be submitted to the Technical Service conducting the approval tests.~~
- 3.3.1.** The application for approval of a vehicle type shall be submitted by the vehicle manufacturer or by their authorized representative.
- 3.3.2.** A model of information document is shown in Annex 1, Part 1- III.
- 3.3.3.** A sufficient number of vehicles representatives of the type to be approved shall be submitted to the Technical Service conducting the approval tests.

4. Approval

- 4.1.** **Granting of type approval** ~~If the vehicle or component type submitted for approval pursuant to this Regulation meets the requirements of the relevant part of this Regulation, approval of that vehicle, system or component shall be granted.~~
- 4.1.1.** **Approval of a type of compressed hydrogen storage system.**
If the hydrogen storage system submitted for approval pursuant to this Regulation meets the requirements of Part I below, approval of that type of hydrogen storage system shall be granted.
- 4.1.2.** **Approval of a type of specific component for the compressed hydrogen storage system.**
If the specific component submitted for approval pursuant to this Regulation meets the requirements of Part II below, approval of that type of specific component shall be granted.

4.1.3. Approval of a vehicle type.

If the vehicle submitted for approval pursuant to this Regulation meets the requirements of Part III below, approval of that vehicle type shall be granted.

- 4.2. An approval number shall be assigned to each type approved: its first two digits (00 for the Regulation in its initial form) shall indicate the series of amendments incorporating the most recent major technical amendments made to the Regulation at the time of issue of the approval. The same Contracting Party shall not assign the same number to another vehicle or component type.
- 4.3. Notice of approval or of extension, refusal or withdrawal of approval pursuant to this Regulation shall be communicated to the Contracting Parties to the Agreement which apply this Regulation by means of a form conforming to the model in Annex 1, Part 2 and photographs and/or plans supplied by the applicant being in a format not exceeding A4 (210 x 297 mm), or folded to that format, and on an appropriate scale.
- 4.4. There shall be affixed, conspicuously and in a readily accessible place specified on the approval form, to every vehicle, **hydrogen storage system** or **specific** component conforming to a type approved under this Regulation, an international approval mark conforming to the models described in Annex 2, consisting of:
- 4.4.1. a circle surrounding the letter "E" followed by the distinguishing number of the country which has granted approval²;
- 4.4.2. the number of this Regulation, followed by the letter "R", a dash and the approval number to the right of the circle prescribed in paragraph 4.4.1.
- 4.5. If the vehicle conforms to a vehicle type approved under one or more other Regulations, annexed to the Agreement, in the country which has granted approval under this Regulation, the symbol prescribed in paragraph 4.4.1. needs not be repeated; in such a case, the Regulation and approval numbers and the additional symbols shall be placed in vertical columns to the right of the symbol prescribed in paragraph 4.4.1. above.
- 4.6. The approval mark shall be clearly legible and be indelible.
- 4.6.1. In the case of a vehicle, the approval mark shall be placed close to or on the vehicle data plate.
- 4.6.2. In the case of a hydrogen storage system, the approval mark shall be placed ~~close to or~~ on the container.
- 4.6.3. In the case of a specific component, the approval mark shall be placed on the specific component.**

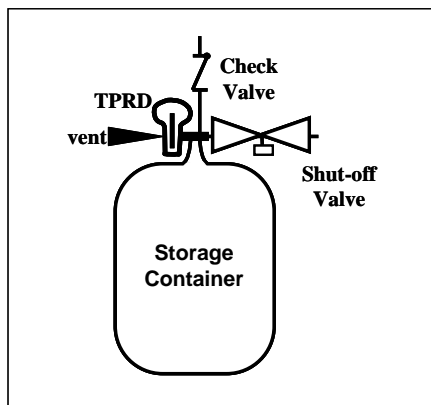
² The distinguishing numbers of the Contracting Parties to the 1958 Agreement are reproduced in Annex 3 to the Consolidated Resolution on the Construction of Vehicles (R.E:3), document ECE/TRANS/WP.29/78/Rev. 2/Amend.3 - <http://www.unece.org/trans/main/wp29/wp29wgs/wp29gen/wp29resolutions.html>

5. Part I – Specifications of the compressed hydrogen storage system

This part specifies the requirements for the compressed hydrogen storage system. The hydrogen storage system consists of the high pressure storage container and primary closure devices for openings into the high pressure storage container. Figure 1 shows a typical compressed hydrogen storage system consisting of a pressurized container, three closure devices and their fittings. The closure devices shall include the following functions, which may be combined:

- (a) TPRD;
- (b) Check valve that prevents reverse flow to the fill line; and
- (c) Automatic shut-off valve that can close to prevent flow from the container to the fuel cell or internal combustion engine. Any shut-off valve, and TPRD that form the primary closure of flow from the storage container shall be mounted directly on or within each container. At least one component with a check valve function shall be mounted directly on or within each container.

Figure 1
Typical compressed hydrogen storage system



All new compressed hydrogen storage systems produced for on-road vehicle service shall have a NWP of 70 MPa or less and a service life of 15 years or less, and be capable of satisfying the requirements of paragraph 5.

The hydrogen storage system shall meet the performance test requirements specified in this paragraph. The qualification requirements for on-road service are:

- 5.1. Verification tests for baseline metrics
- 5.2. Verification test for performance durability (hydraulic sequential tests)
- 5.3. Verification test for expected on-road system performance (pneumatic sequential tests)
- 5.4. Verification test for service terminating system performance in Fire
- 5.5. Verification test for performance durability of primary closures.

The test elements within these performance requirements are summarized in Table 1. The corresponding test procedures are specified in Annex 3.

Table 1
Overview of performance requirements

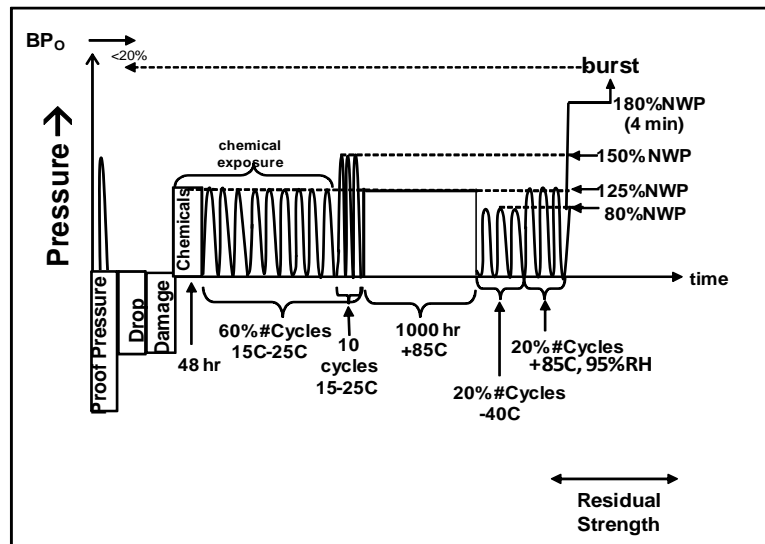
5.1.	Verification tests for baseline metrics
5.1.1.	Baseline initial burst pressure
5.1.2.	Baseline initial pressure cycle life
5.2.	Verification test for performance durability (sequential hydraulic tests)
5.2.1.	Proof pressure test
5.2.2.	Drop (impact) test
5.2.3.	Surface damage
5.2.4.	Chemical exposure and ambient temperature pressure cycling tests
5.2.5.	High temperature static pressure test
5.2.6.	Extreme temperature pressure cycling
5.2.7.	Residual proof pressure test
5.2.8.	Residual strength Burst Test
5.3.	Verification test for expected on-road performance (sequential pneumatic tests)
5.3.1.	Proof pressure test
5.3.2.	Ambient and extreme temperature gas pressure cycling test (pneumatic)
5.3.3.	Extreme temperature static gas pressure leak/permeation test (pneumatic)
5.3.4.	Residual proof pressure test
5.3.5.	Residual strength burst test (hydraulic)
5.4.	Verification test for service terminating performance in fire
5.5.	Requirements for primary closure devices

- 5.1. Verification tests for baseline metrics
- 5.1.1. Baseline initial burst pressure
- Three (3) containers shall be hydraulically pressurized until burst. The manufacturer shall supply documentation (measurements and statistical analyses) that establish the midpoint burst pressure of new storage containers, BP_0 .
- All containers tested shall have a burst pressure within ± 10 per cent of BP_0 and greater than or equal to a minimum BP_{min} of 225 per cent NWP.
- In addition, containers having glass-fibre composite as a primary constituent to have a minimum burst pressure greater than 350 per cent NWP.
- 5.1.2. Baseline initial pressure cycle life
- Three (3) containers shall be hydraulically pressure cycled at 20 (± 5) °C to 125 per cent NWP (+2/-0 MPa) without rupture for 22,000 cycles or until a leak occurs. Leakage shall not occur within 11,000 cycles for a 15-year service life.
- 5.2. Verification tests for performance durability (Hydraulic sequential tests)
- If all three pressure cycle life measurements made in paragraph 5.1.2. are greater than 11,000 cycles, or if they are all within ± 25 per cent of each

other, then only one (1) container is tested in paragraph 5.2. Otherwise, three (3) containers are tested in paragraph 5.2.

A hydrogen storage container shall not leak during the following sequence of tests, which are applied in series to a single system and which are illustrated in Figure 2. Specifics of applicable test procedures for the hydrogen storage system are provided in Annex 3, paragraph 3.

Figure 2
Verification test for performance durability (hydraulic)



5.2.1. Proof pressure test

A storage container is pressurized to 150 per cent NWP (+2/-0 MPa) and held for at least 30 sec (Annex 3, paragraph 3.1. test procedure).

5.2.2. Drop (impact) test

The storage container is dropped at several impact angles (Annex 3, paragraph 3.2. test procedure).

5.2.3. Surface damage test

The storage container is subjected to surface damage (Annex 3, paragraph 3.3. test procedure).

5.2.4. Chemical exposure and ambient-temperature pressure cycling test

The storage container is exposed to chemicals found in the on-road environment and pressure cycled to 125 per cent NWP (+2/-0 MPa) at 20 (± 5) °C for 60 per cent number of Cycles pressure cycles (Annex 3, paragraph 3.4. test procedure). Chemical exposure is discontinued before the last 10 cycles, which are conducted to 150 per cent NWP (+2/-0 MPa).

5.2.5. High temperature static pressure test.

The storage container is pressurized to 125 per cent NWP (+2/-0 MPa) at $\geq 85^\circ\text{C}$ for at least 1,000 hours (Annex 3, paragraph 3.5. test procedure).

5.2.6. Extreme temperature pressure cycling.

The storage container is pressure cycled at ≤ -40 °C to 80 per cent NWP (+2/-0 MPa) for 20 per cent number of Cycles and at $\geq +85$ °C and 95 (± 2) per cent relative humidity to 125 per cent NWP (+2/-0 MPa) for 20 per cent number of Cycles (Annex 3, paragraph 2.2. test procedure).

5.2.7. Hydraulic residual pressure test. The storage container is pressurized to 180 per cent NWP (+2/-0 MPa) and held at least 4 minutes without burst (Annex 3, paragraph 3.1. test procedure).

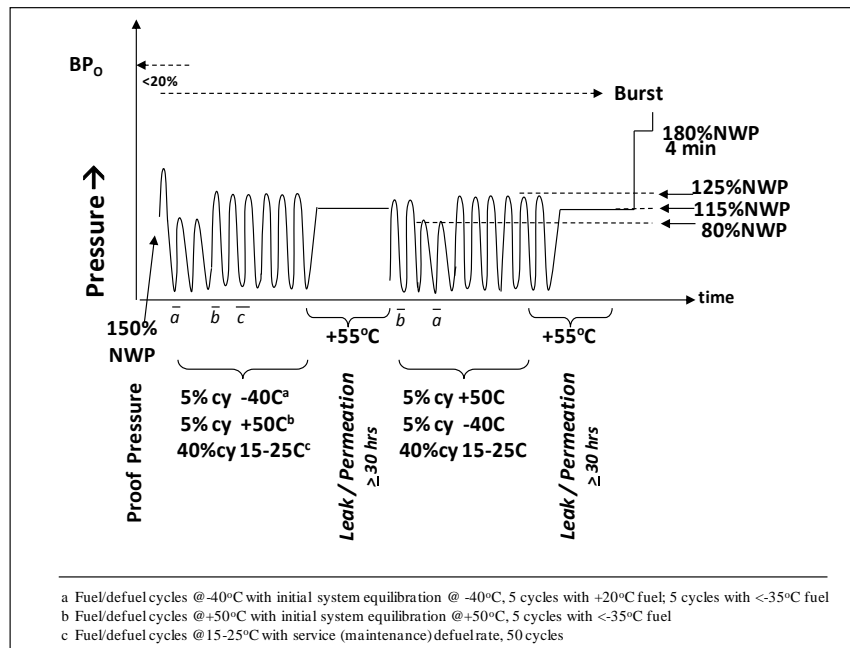
5.2.8. Residual burst strength test

The storage container undergoes a hydraulic burst test to verify that the burst pressure is at least 80 per cent of the baseline initial burst pressure (BP_0) determined in paragraph 5.1.1. (Annex 3, paragraph 2.1. test procedure).

5.3. Verification test for expected on-road performance (Pneumatic sequential tests)

A hydrogen storage system shall not leak during the following sequence of tests, which are illustrated in Figure 3. Specifics of applicable test procedures for the hydrogen storage system are provided in Annex 3.

Figure 3
Verification test for expected on-road performance (pneumatic/hydraulic)



5.3.1. Proof pressure test

A system is pressurized to 150 per cent NWP (+2/-0 MPa) for at least 30 seconds (Annex 3, paragraph 3.1. test procedure). A storage container that has undergone a proof pressure test in manufacture may be exempted from this test.

5.3.2. Ambient and extreme temperature gas pressure cycling test

The system is pressure cycled using hydrogen gas for 500 cycles (Annex 3, paragraph 4.1. test procedure).

- (a) The pressure cycles are divided into two groups: Half of the cycles (250) are performed before exposure to static pressure (paragraph 5.3.3.) and the remaining half of the cycles (250) are performed after the initial exposure to static pressure (paragraph 5.3.3.) as illustrated in Figure 3;
- (b) The first group of pressure cycling, 25 cycles are performed to 80 per cent NWP (+2/-0 MPa) at ≤ -40 °C, then 25 cycles to 125 per cent NWP (+2/-0 MPa) at $\geq +50$ °C and 95 (± 2) per cent relative humidity, and the remaining 200 cycles to 125 per cent NWP (+2/-0 MPa) at $20 (\pm 5)$ °C;

The second group of pressure cycling, 25 cycles are performed to 125 per cent NWP (+2/-0 MPa) at $\geq +50$ °C and 95 (± 2) per cent relative humidity, then 25 cycles to 80 per cent NWP (+2/-0 MPa) at ≤ -40 °C, and the remaining 200 cycles to 125 per cent NWP (+2/-0 MPa) at $20 (\pm 5)$ °C.
- (c) The hydrogen gas fuel temperature is ≤ -40 °C;
- (d) During the first group of 250 pressure cycles, five cycles are performed with fuel having a temperature of $+20 (\pm 5)$ °C after temperature equilibration of the system at ≤ -40 °C; five cycles are performed with fuel having a temperature of ≤ -40 °C; and five cycles are performed with fuel having a temperature of ≤ -40 °C after temperature equilibration of the system at $\geq +50$ °C and 95 per cent relative humidity;
- (e) Fifty pressure cycles are performed using a de-fuelling rate greater than or equal to the maintenance de-fuelling rate.

5.3.3. Extreme temperature static pressure leak/permeation test.

- (a) The test is performed after each group of 250 pneumatic pressure cycles in paragraph 5.3.2. ;
- (b) The maximum allowable hydrogen discharge from the compressed hydrogen storage system is 46 ml/hr/l water capacity of the storage system. (Annex 3, paragraph 4.2. test procedure);
- (c) If the measured permeation rate is greater than 0.005 mg/sec (3.6 Nml/min), a localized leak test is performed to ensure no point of localized external leakage is greater than 0.005 mg/sec (3.6 Nml/min) (Annex 3, paragraph 4.3. test procedure).

5.3.4. Residual proof pressure test (hydraulic)

The storage container is pressurized to 180 per cent NWP (+2/-0 MPa) and held at least 4 minutes without burst (Annex 3, paragraph 3.1. test procedure).

5.3.5. Residual strength burst test (hydraulic)

The storage container undergoes a hydraulic burst to verify that the burst pressure is ~~within 20~~ **at least 80** per cent of the baseline **initial** burst pressure (**BP₀**) determined in paragraph 5.1.1. (Annex 3, paragraph 2.1. test procedure).

5.4. Verification test for service terminating performance in fire

This section describes the fire test with compressed hydrogen as the test gas. Compressed air may be used as an alternative test gas.

A hydrogen storage system is pressurized to NWP and exposed to fire (Annex 3, paragraph 5.1. test procedure). A temperature-activated pressure relief device shall release the contained gases in a controlled manner without rupture.

5.5. Requirements for primary closure devices

The primary closure devices that isolate the high pressure hydrogen storage system, namely TPRD, check valve and shut-off valve, as described in Figure 1, shall ~~comply with one of the following requirements:~~

~~(a) The closing devices shall be tested and type-approved in accordance with Part II of this Regulation and produced in conformity with the approved type.~~

~~;~~
~~for~~

~~(b) The manufacturer of the compressed hydrogen storage system shall demonstrate that the primary closure devices comply with the requirements of Part II of this Regulation.~~

Retesting of the storage system is not required if alternative closure devices are provided having comparable function, fittings, materials, strength and dimensions, and satisfy ~~one of~~ the condition[s] above. However, a change in TPRD hardware, its position of installation or venting lines shall require a new fire test in accordance with paragraph 5.4.

5.6. Labelling

A label shall be permanently affixed on each container with at least the following information: name of the manufacturer, serial number, date of manufacture, **MFP**, NWP, type of fuel (~~e.g.i.e.~~ "CHG" for gaseous hydrogen ~~or "LH2" for liquid hydrogen~~), and date of removal from service. Each container shall also be marked with the number of cycles used in the testing programme as per paragraph 5.1.2. Any label affixed to the container in compliance with this paragraph shall remain in place and be legible for the duration of the manufacturer's recommended service life for the container.

Date of removal from service shall not be more than 15 years after the date of manufacture.

6. Part II – Specifications of specific components for compressed hydrogen storage system

6.1. TPRD requirements

TPRDs shall meet the following performance requirements:

- (a) Pressure cycling test (Annex 4, paragraph 1.1.);
- (c) Accelerated life test (Annex4, paragraph 1.2.);
- (d) Temperature cycling test (Annex4, paragraph 1.3.);
- (e) Salt corrosion resistance test (Annex 4, paragraph 1.4.);
- (f) Vehicle environment test (Annex 4, paragraph 1.5.);

- (g) Stress corrosion cracking test (Annex 4, paragraph 1.6.);
- (h) Drop and vibration test (Annex 4, paragraph 1.7.);
- (i) Leak test (Annex 4, paragraph 1.8.);
- (j) Bench top activation test (Annex 4, paragraph 1.9.);
- (k) Flow rate test (Annex 4, paragraph 1.10.).

6.2. Check valve and automatic shut-off valve requirements

Check valves and automatic shut-off valves shall meet the following performance requirements:

- (a) Hydrostatic strength test (Annex 4, paragraph 2.1.);
- (b) Leak test (Annex 4, paragraph 2.2.);
- (c) Extreme temperature pressure cycling test (Annex 4, paragraph 2.3.);
- (d) Salt corrosion resistance test (Annex 4, paragraph 2.4.);
- (e) Vehicle environment test (Annex 4, paragraph 2.5.);
- (f) Atmospheric exposure test (Annex 4, paragraph 2.6.);
- (g) Electrical tests (Annex 4, paragraph 2.7.);
- (h) Vibration test (Annex 4, paragraph 2.8.);
- (i) Stress corrosion cracking test (Annex 4, paragraph 2.9.);
- (j) Pre-cooled hydrogen exposure test (Annex 4, paragraph 2.10.).

6.3. **At least the following information: MFP and type of fuel (e.g. "CHG" for gaseous hydrogen), shall be marked on each component having the function(s) of the primary closure devices in clearly legible and indelible manner.**

7. **Part III – Specifications of a vehicle fuel system incorporating the compressed hydrogen storage system**

This part specifies requirements for the vehicle fuel system, which includes the compressed hydrogen storage system, piping, joints, and components in which hydrogen is present. **The hydrogen storage system included in the vehicle fuel system shall be tested and type-approved in accordance with Part I of this Regulation and produced in conformity with the approved type.**

7.1. In-use fuel system requirements

7.1.1. Fuelling receptacle

7.1.1.1. A compressed hydrogen fuelling receptacle shall prevent reverse flow to the atmosphere. Test procedure is by visual inspection.

7.1.1.2. Fuelling receptacle label: A label shall be affixed close to the fuelling receptacle; for instance inside a refilling hatch, showing the following information: fuel type (e.g.i.e. "CHG" for gaseous hydrogen ~~or "LH2" for liquid hydrogen~~), NWP, date of removal from service of containers.

- 7.1.1.3. The fuelling receptacle shall be mounted on the vehicle to ensure positive locking of the fuelling nozzle. The receptacle shall be protected from tampering and the ingress of dirt and water (e.g. installed in a compartment which can be locked). Test procedure is by visual inspection.
- 7.1.1.4. The fuelling receptacle shall not be mounted within the external energy absorbing elements of the vehicle (e.g. bumper) and shall not be installed in the passenger compartment, luggage compartment and other places where hydrogen gas could accumulate and where ventilation is not sufficient. Test procedure is by visual inspection.
- 7.1.2. Over-pressure protection for the low pressure system (Annex 5, paragraph 6. test procedure)
- The hydrogen system downstream of a pressure regulator shall be protected against overpressure due to the possible failure of the pressure regulator. The set pressure of the overpressure protection device shall be lower than or equal to the maximum allowable working pressure for the appropriate section of the hydrogen system.
- 7.1.3. Hydrogen discharge systems
- 7.1.3.1. Pressure relief systems (Annex 5, paragraph 6. test procedure)
- (a) Storage system TPRDs. The outlet of the vent line, if present, for hydrogen gas discharge from TPRD(s) of the storage system shall be protected by a cap;
- (b) Storage system TPRDs. The hydrogen gas discharge from TPRD(s) of the storage system shall not be directed:
- (i) Into enclosed or semi-enclosed spaces;
 - (ii) Into or towards any vehicle wheel housing;
 - (iii) Towards hydrogen gas containers;
 - (iv) Forward from the vehicle, or horizontally (parallel to road) from the back or sides of the vehicle.
- (c) Other pressure relief devices (such as a burst ~~disc~~**disk**) may be used outside the hydrogen storage system. The hydrogen gas discharge from other pressure relief devices shall not be directed:
- (i) Towards exposed electrical terminals, exposed electrical switches or other ignition sources;
 - (ii) Into or towards the vehicle passenger or luggage compartments;
 - (iii) Into or towards any vehicle wheel housing;
 - (iv) Towards hydrogen gas containers.
- 7.1.3.2. Vehicle exhaust system (Annex 5, paragraph 4. test procedure)
- At the vehicle exhaust system's point of discharge, the hydrogen concentration level shall:
- (a) Not exceed 4 per cent average by volume during any moving three-second time interval during normal operation including start-up and shut-down;

- (b) And not exceed 8 per cent at any time (Annex 5, paragraph 4. test procedure).
- 7.1.4. Protection against flammable conditions: single failure conditions
- 7.1.4.1. Hydrogen leakage and/or permeation from the hydrogen storage system shall not directly vent into the passenger or luggage compartments, or to any enclosed or semi-enclosed spaces within the vehicle that contains unprotected ignition sources.
- 7.1.4.2. Any single failure downstream of the main hydrogen shut-off valve shall not result in accumulations in levels of hydrogen concentration in the passenger compartment according to test procedure in Annex 5, paragraph 3.2.
- 7.1.4.3. If, during operation, a single failure results in a hydrogen concentration exceeding 3.0 per cent by volume in air in the enclosed or semi-enclosed spaces of the vehicle, then a warning shall be provided (paragraph 7.1.6.). If the hydrogen concentration exceeds 4.0 per cent by volume in the air in the enclosed or semi-enclosed spaces of the vehicle, the main shut-off valve shall be closed to isolate the storage system. (Annex 5, paragraph 3. test procedure).
- 7.1.5. Fuel system leakage
- The hydrogen fuelling line (e.g. piping, joint, etc.) downstream of the main shut-off valve(s) to the fuel cell system or the engine shall not leak. Compliance shall be verified at NWP (Annex 5, paragraph 5. test procedure).
- 7.1.6. Tell-tale signal warning to driver
- The warning shall be given by a visual signal or display text with the following properties:
- (a) Visible to the driver while in the driver's designated seating position with the driver's seat belt fastened;
 - (b) Yellow in colour if the detection system malfunctions (e.g. circuit disconnection, short-circuit, sensor fault). It shall be red in compliance with section paragraph 7.1.4.3;
 - (c) When illuminated, shall be visible to the driver under both daylight and night time driving conditions;
 - (d) Remains illuminated when 3.0 per cent concentration or detection system malfunction exists and the ignition locking system is in the "On" ("Run") position or the propulsion system is activated.
- 7.2. Post-crash fuel system integrity
- The **vehicle** fuel system ~~of the vehicle~~ shall comply with the following requirements after the vehicle crash tests in accordance with the following Regulations by also applying the test procedures prescribed in Annex 5 of this Regulation.
- (a) Frontal impact test in accordance with either Regulation No. 12, or Regulation No. 94; and
 - (b) Lateral impact test in accordance with Regulation No. 95.
- In case that one or both of the vehicle crash tests specified above are not applicable to the vehicle, the vehicle fuel system shall, instead, be subject to the relevant alternative accelerations specified below **and the hydrogen**

storage system shall be installed in a position satisfying the requirements in paragraph 7.2.4. The accelerations shall be measured at the location where the hydrogen storage system is installed. The vehicle fuel system shall be mounted and fixed on the representative part of the vehicle. The mass used shall be representative for a fully equipped and filled container or container assembly.

Accelerations for \forall vehicles of categories M₁ and N₁:

- (a) 20 g in the direction of travel (**forward and rearward direction**);
- (b) 8 g horizontally perpendicular to the direction of travel (**to left and right**).

Accelerations for \forall vehicles of categories M₂ and N₂:

- (a) 10 g in the direction of travel (**forward and rearward direction**);
- (b) 5 g horizontally perpendicular to the direction of travel (**to left and right**).

Accelerations for \forall vehicles of categories M₃ and N₃:

- (a) 6.6 g in the direction of travel (**forward and rearward direction**);
- (b) 5 g horizontally perpendicular to the direction of travel (**to left and right**).

7.2.1. Fuel leakage limit

The volumetric flow of hydrogen gas leakage shall not exceed an average of 118 Nl per minute for the time interval, Δt , as determined in accordance with Annex 5, paragraph 1.1. or 1.2.

7.2.2. Concentration limit in enclosed spaces

Hydrogen gas leakage shall not result in a hydrogen concentration in the air greater than 4.0 per cent} by volume in the passenger and luggage compartments (Annex 5, paragraph 2. test procedures). The requirement is satisfied if it is confirmed that the shut-off valve of the storage system has closed within 5 seconds of the crash and no leakage from the storage system.

7.2.3. Container Displacement

The storage container(s) shall remain attached to the vehicle at a minimum of one attachment point.

7.2.4. Additional installation requirements

7.2.4.1. Requirements on installation of the hydrogen storage system not subject to the frontal impact test:

The container shall be mounted in a position which is rearward of a vertical plane perpendicular to the centre line of the vehicle and located 420 mm rearward from the front edge of the vehicle.

7.2.4.2. Requirements on installation of the hydrogen storage system not subject to the lateral impact test:

The container shall be mounted in a position which is between the two vertical planes parallel to the centre line of the vehicle located 200 mm inside from the both outermost edge of the vehicle in the proximity of its container(s).

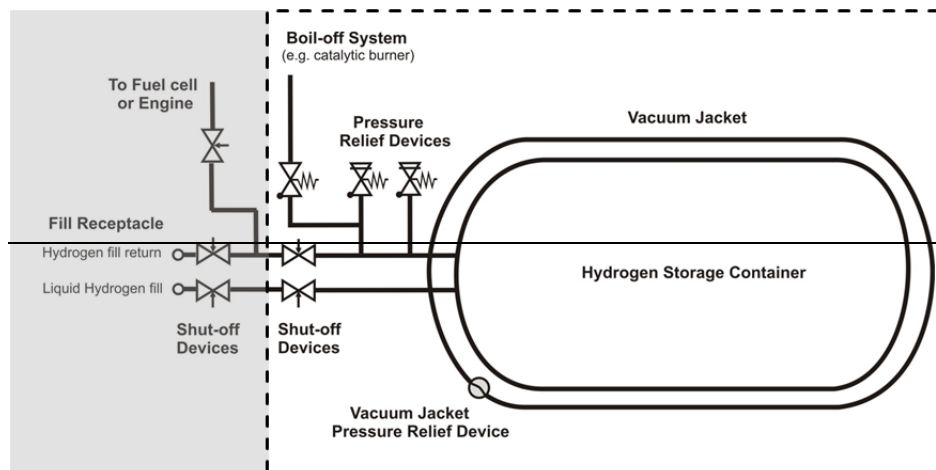
8. Part IV Specifications of the liquefied hydrogen storage system (LHSS)

This part specifies the requirements for the liquefied hydrogen storage system.

The boundaries of the LHSS are defined by the interfaces which can isolate the stored liquefied (and/or gaseous) hydrogen from the remainder of the fuel system and the environment. All components located within this boundary are subject to the requirements defined in this paragraph. Figure 4 shows typical LHSS. The closure devices shall include the following functions, which may be combined:

- (a) Liquefied hydrogen storage container;
- (b) Automatic shut off device;
- (c) Boil off system;
- (d) Pressure relief device (PRD).

Figure 4
Typical liquefied storage system



The manufacturer shall specify a Maximum Allowable Working Pressure (MAWP).

The test elements within these performance requirements are summarized in Table 2.

Table 2
Overview of performance requirements

<p>Paragraph 8.1. Verification of baseline metrics</p> <ul style="list-style-type: none"> 8.1.1. Proof pressure 8.1.2. Baseline initial burst pressure, performed on the inner container 8.1.3. Baseline Pressure cycle life
<p>Paragraph 8.2. Verification of expected on-road performance</p> <ul style="list-style-type: none"> 8.2.1. Boil off

<p>Paragraph 8.1. Verification of baseline metrics</p> <p>8.1.1. Proof pressure</p> <p>8.1.2. Baseline initial burst pressure, performed on the inner container</p> <p>8.1.3. Baseline Pressure cycle life</p>
<p>8.2.2. Leak</p> <p>8.2.3. Vacuum loss</p>
<p>Paragraph 8.3. Verification for service terminating conditions: bonfire test or localised fire test</p>
<p>Paragraph 8.2.4. Requirements for pressure relief device and shut-off device</p>

~~8.1. Verification of baseline metrics~~

~~8.1.1. Proof pressure~~

~~A system is pressurized to a pressure $p_{test} \geq 1.3 (MAWP \pm 0.1 \text{ MPa})$ in accordance with test procedure in Annex 6, paragraph 1.1. without visible deformation, degradation of container pressure, or detectable leakage.~~

~~8.1.2. Baseline initial burst pressure~~

~~The burst test is performed in accordance with the test procedure in Annex 6, paragraph 1.2. on one sample of the inner container that is not integrated in its outer jacket and not insulated.~~

~~The burst pressure shall be at least equal to the burst pressure used for the mechanical calculations. For steel containers that is either:~~

~~(a) Maximum Allowable Working Pressure (MAWP) (in MPa) plus 0.1 MPa multiplied by 3.25;~~

~~or~~

~~(b) Maximum Allowable Working Pressure (MAWP) (in MPa) plus 0.1 MPa multiplied by 1.5 and multiplied by R_m/R_p , where R_m is the minimum ultimate tensile strength of the container material and R_p (minimum yield strength) is 1.0 for austenitic steels and R_p is 0.2 for other steels.~~

~~8.1.3. Baseline pressure cycle life~~

~~When using metallic containers and/or metallic vacuum jackets, the manufacturer shall either provide a calculation in order to demonstrate that the container is designed according to current regional legislation or accepted standards (e.g. in US the ASME Boiler and Pressure Vessel Code, in Europe EN 1251-1 and EN 1251-2 and in all other countries an applicable regulation for the design of metallic pressure containers), or define and perform suitable tests (including Annex 6, paragraph 1.3.) that prove the same level of safety compared to a design supported by calculation according to accepted standards.~~

~~For non-metallic containers and/or vacuum jackets, in addition to the tests in Annex 6, paragraph 1.3., suitable tests shall be designed by the manufacturer to prove the same level of safety as a metallic container.~~

~~8.2. Verification for expected on road performance~~

~~8.2.1. Boil off~~

~~The boil off test is performed on a liquefied hydrogen storage system equipped with all components as described in paragraph 8. (Figure 4). The test is performed on a system filled with liquid hydrogen in accordance with the test procedure in Annex 6, paragraph 2.1. and shall demonstrate that the boil off system limits the pressure in the inner storage container to below the maximum allowable working pressure.~~

~~8.2.2. Leak~~

~~After the boil off test in paragraph 2.1. of Annex 6, the system is kept at boil off pressure and the total discharge rate due to leakage shall be measured in accordance with the test procedure in Annex 6, paragraph 2.2. The maximum allowable discharge from the hydrogen storage system is $R \leq 150 \text{ Nm}^3/\text{min}$ where~~

~~$R = (V_{\text{width}} + 1) * (V_{\text{height}} + 0.5) * (V_{\text{length}} + 1) / 30.4$ and V_{width} , V_{height} , V_{length} are the vehicle width, height, length (m), respectively.~~

~~8.2.3. Vacuum loss~~

~~The vacuum loss test is performed on a liquefied hydrogen storage system equipped with all components as described in paragraph 8. (Figure 4). The test is performed on a system filled with liquid hydrogen in accordance with the test procedure in Annex 6, paragraph 2.3. and shall demonstrate that both primary and secondary pressure relief devices limit the pressure to the values specified in Annex 6, paragraph 2.3. if vacuum pressure is lost.~~

~~8.3. Verification of service terminating conditions:~~

~~The manufacturer may choose one of the test conditions described in paragraph 8.3.1. or 8.3.2.~~

~~8.3.1. Bonfire test~~

~~The function of the pressure relief devices and the absence of rupture under the following service terminating conditions shall be demonstrated in accordance with the test procedures provided in Annex 6, paragraph 3.~~

~~A hydrogen storage system is filled to half full liquid level and exposed to fire in accordance with the test procedure of Annex 6, paragraph 3. The pressure relief device(s) shall release the contained gas in a controlled manner without rupture.~~

~~For steel containers, the test is successfully completed when the requirements on the pressure limits for the pressure relief devices as described in Annex 6, paragraph 3. are fulfilled. For other container materials, an equivalent level of safety shall be demonstrated.~~

~~8.3.2. Localised fire test~~

~~The test shall be conducted in accordance with paragraph 5.4.~~

~~8.4. Requirements for pressure relief device and shut off device~~

~~The pressure relief device and shut off device, as described in Figure 4, shall comply with one of the following requirements:~~

- ~~(a) The devices shall be type approved in accordance with Part V of this Regulation and produced in conformity with the approved type, [or~~
- ~~(b) The manufacturer of the liquefied hydrogen storage system shall ensure that the devices comply with the requirements of Part V of this Regulation.]~~

~~Retesting of the storage system is not required if alternative closure devices are provided that have a comparable function, fittings, materials, strength and dimensions, and satisfy [one of] the condition[s] above. However, a change in PRD hardware, its position of installation or venting lines shall require a new fire test in accordance with paragraph 8.3.~~

~~8.5. Labelling~~

~~A label shall be permanently affixed on each container with at least the following information: Name of the Manufacturer, Serial Number, Date of Manufacture, MAWP, fuel type (i.e. "CHG" for gaseous hydrogen or "LH2" for liquid hydrogen).~~

~~9. Part V – Specifications of the specific components for liquefied hydrogen storage system (LHSS)~~

~~9.1. Pressure relief device qualification requirements~~

~~The pressure relief device shall meet the following performance qualification requirements:~~

- ~~(a) Pressure test (Annex 7, paragraph 1. test procedure);~~
- ~~(b) External leakage test (Annex 7, paragraph 2. test procedure);~~
- ~~(c) Operational test (Annex 7, paragraph 4. test procedure);~~
- ~~(d) Corrosion resistance test (Annex 7, paragraph 5. test procedure);~~
- ~~(e) Temperature cycle test (Annex 7, paragraph 8. test procedure).~~

~~9.2. Shut off device qualification requirements~~

~~The shut off device shall meet the following performance qualification requirements:~~

- ~~(a) Pressure test (Annex 7, paragraph 1. test procedure);~~
- ~~(b) External leakage Test (Annex 7, paragraph 2. test procedure);~~
- ~~(c) Endurance test (Annex 7, paragraph 3. test procedure);~~
- ~~(d) Corrosion resistance test (Annex 7, paragraph 5. test procedure);~~
- ~~(e) Resistance to dry heat test (Annex 7, paragraph 6. test procedure);~~
- ~~(f) Ozone ageing test (Annex 7, paragraph 7. test procedure);~~
- ~~(g) Temperature cycle test (Annex 7, paragraph 8. test procedure);~~
- ~~(h) Flex line cycle test (Annex 7, paragraph 9. test procedure).~~

~~10. Part VI Specifications of vehicle fuel system incorporating LHSS~~

~~10.3. LHSS fuel system integrity~~

~~This paragraph specifies requirements for the integrity of the hydrogen fuel delivery system, which includes the liquefied hydrogen storage system, piping, joints, and components in which hydrogen is present. These requirements are in addition to requirements specified in paragraphs 7.1 and 7.2., all of which apply to vehicles with liquefied hydrogen storage systems with the exception of paragraph 7.1.1.1. The fuelling receptacle label shall designate liquid hydrogen as the fuel type. Test procedures are given in Annex 8.~~

~~10.3.1. Flammable materials used in the vehicle shall be protected from liquefied air that may condense on elements of the fuel system.~~

~~10.3.2. The insulation of the components shall prevent liquefaction of the air in contact with the outer surfaces, unless a system is provided for collecting and vaporizing the liquefied air. The materials of the components nearby shall be compatible with an atmosphere enriched with oxygen.~~

~~118. Modification of type and extension of approval~~

~~118.1. Every modification to an existing type of vehicle or hydrogen storage system or specific component for hydrogen storage system shall be notified to the Type Approval Authority which approved that type. The Authority shall then either:~~

- ~~(a) Decide, in consultation with the manufacturer, that a new type-approval is to be granted; or~~
- ~~(b) Apply the procedure contained in paragraph 118.1.1. (Revision) and, if applicable, the procedure contained in paragraph 118.1.2. (Extension).~~

~~118.1.1. Revision~~

~~When particulars recorded in the information documents of Annex 1 have changed and the Type Approval Authority considers that the modifications made are unlikely to have an appreciable adverse effect and that in any case the vehicle/**hydrogen storage system/specific** component still meets the requirements, the modification shall be designated a "revision".~~

~~In such a case, the Type Approval Authority shall issue the revised pages of the information documents of Annex 1 as necessary, marking each revised page to show clearly the nature of the modification and the date of re-issue. A consolidated, updated version of the information documents of Annex 1, accompanied by a detailed description of the modification, shall be deemed to meet this requirement.~~

~~118.1.2. Extension~~

~~The modification shall be designated an "extension" if, in addition to the change of the particulars recorded in the information folder,~~

- (a) Further inspections or tests are required; or
 - (b) Any information on the communication document (with the exception of its attachments) has changed; or
 - (c) Approval to a later series of amendments is requested after its entry into force.
- 448.2. Confirmation or refusal of approval, specifying the alterations, shall be communicated by the procedure specified in paragraph 4.3. above to the Contracting Parties to the Agreement which apply this Regulation. In addition, the index to the information documents and to the test reports, attached to the communication document of Annex 1, shall be amended accordingly to show the date of the most recent revision or extension.
- 448.3. The Competent Authority issuing the extension of approval shall assign a serial number to each communication form drawn up for such an extension.

129. Conformity of production

Procedures concerning conformity of production shall conform to the general provisions defined in Appendix 2 to the Agreement (E/ECE/324-E/ECE/TRANS/505/Rev.2) and **at least** meet the following requirements:

- 429.1. A vehicle, **hydrogen storage** system or component approved pursuant to this Regulation shall be so manufactured as to conform to the type approved by meeting the respective requirements of paragraphs 5. to ~~407.~~ above;
- 429.2. The competent Authority which has granted approval may at any time verify the conformity of control methods applicable to each production unit. The normal frequency of such inspections shall be once every two years.
- 9.3. In case of compressed hydrogen storage system, the production control of the container shall satisfy the following additional requirements;**
- 9.3.1. Every container shall be tested in accordance with paragraph 5.2.1. of this Regulation.**
- 9.3.2. Batch testing**
- In any case, for each batch, which is not permitted to exceed 200 finished cylinders or liners (not including destructive test cylinders or liners), or one shift of successive production, whichever is greater, at least one container shall be subjected to the rupture test in paragraph 9.3.2.1. and furthermore at least one container shall be subjected to the pressure cycle test in paragraph 9.3.2.2.**
- 9.3.2.1. Rupture test in batch testing**
- The test shall be performed according to paragraph 2.1. (hydrostatic pressure rupture test) of Annex 3. The required rupture pressure shall be at least BP_0-10 per cent, and in no case less than the value necessary to meet the stress ratio requirements.**
- 9.3.2.2. Ambient temperature pressure cycling test in batch testing**
- The test shall be performed according to paragraph 2.2. (hydrostatic pressure cycling test) of Annex 3. The cylinder shall be pressure cycled**

using hydrostatic pressures up to 125 per cent of NWP (+2/-0 MPa), to 22,000 cycles in case of no leakage or until leakage occurs. The relative humidity shall not be specified. For the service life of 15 years, the cylinder shall not leak or rupture within the first 11,000 cycles.

9.3.2.3. Relaxation provisions

In the ambient temperature pressure cycling test in batch testing, finished cylinders shall be pressure cycled at a sampling frequency defined as follows:

9.3.2.3.1. One cylinder from each batch shall be pressure cycled with 11,000 cycles for the service life of 15 years;

9.3.2.3.2. On 10 sequential production batches of the same design, should none of the pressure cycled cylinders leak or rupture in less than 11,000 cycles x 1.5 for the service life of 15 years, then the pressure cycling test can be reduced to one cylinder from every 5 batches of production;

9.3.2.3.3. On 10 sequential production batches of the same design, should none of the pressure cycled cylinders leak or rupture in less than 11,000 cycles x 2.0 for the service life of 15 years, then the pressure cycling test can be reduced to one cylinder from every 10 batches of production;

9.3.2.3.4. Should more than 6 months have expired since the last batch of production, then the sampling frequency for the next batch of production shall be that specified in paragraph 9.3.2.3.2. or 9.3.2.3.3. above.

9.3.2.3.5. Should any cylinder tested at the sampling frequency in paragraph 9.3.2.3.2. or 9.3.2.3.3. above fail to meet the required number of pressure cycles, then it shall be necessary to repeat the pressure cycling test at the sampling frequency in paragraph 9.3.2.3.1 above for a minimum 10 production batches. The sampling frequency for testing thereafter shall be that specified in paragraph 9.3.2.3.2. or 9.3.2.3.3. above.

9.3.2.3.6. Should any cylinder tested at the sampling frequency in paragraph 9.3.2.3.1., 9.3.2.3.2. or 9.3.2.3.3. above fail to meet the minimum requirement regarding the number of pressure cycles (11,000 cycles), then the cause of failure shall be determined and corrected following the procedures in paragraph 9.3.2.3.7. The pressure cycling test shall then be repeated on an additional three cylinders from that batch. Should any of the three additional cylinders fail to meet the minimum requirement regarding the number of pressure cycles (11,000 cycles), then all cylinders of this batch shall be rejected.

9.3.2.3.7. In the event of failure to meet test requirements retesting or reheat treatment and retesting shall be carried out as follows:

(a) if there is evidence of a fault in carrying out a test, or an error of measurement, a further test shall be performed. If the result of this test is satisfactory, the first test shall be ignored;

(b) If the test has been carried out in a satisfactory manner, the cause of test failure shall be identified.

All cylinders that fail to meet the requirements shall be rejected or repaired by an approved method. The non-rejected cylinders are then considered as a new batch.

In any case, the new batch shall be retested. All the relevant prototype or batch tests needed to prove the acceptability of the new batch shall be performed again. If any cylinder in a batch is proven unsatisfactory by one or more tests, all cylinders of this batch shall be rejected.

1310. Penalties for non-conformity of production

1310.1. The approval granted in respect of a vehicle, system or component type pursuant to this Regulation may be withdrawn if the requirements laid down in paragraph 129. above are not complied with.

1310.2. If a Contracting Party withdraws an approval it had previously granted, it shall forthwith so notify the other Contracting Parties applying this Regulation by sending them a communication form conforming to the model set out in Part 2 of Annex 1 to this Regulation.

1411. Production definitively discontinued

If the holder of the approval completely ceases to manufacture a type of vehicle, system or component approved in accordance with this Regulation, he shall so inform the authority which granted the approval, which in turn shall forthwith inform the other Contracting Parties to the Agreement applying this Regulation by means of a communication form conforming to the model set out in Part 2 of Annex 1 to this Regulation.

1512. Names and addresses of the Technical Services responsible for conducting approval tests and of the Type Approval Authorities

The Contracting Parties to the Agreement applying this Regulation shall communicate to the United Nations secretariat the names and addresses of the Technical Services responsible for conducting approval tests and of the Type Approval Authorities which grant approval and to which forms certifying approval or extension or refusal or withdrawal of approval are to be sent.

1613. ~~Transitional~~ Additional provisions

13.1. **Contracting Parties applying this Regulation may continue to require the proof of compliance to their national/regional provisions on the post-crash fuel system integrity, which were already implemented within their territory at the time of entry into force of this Regulation, but not prescribed in this Regulation, until relevant technical requirements are established and implemented as an amendment to this Regulation.**

13.2. Contracting Parties applying this Regulation may continue to require the proof of compliance (i.e. data-sheet including chemical composition) to their national/regional provisions on the material compatibility and hydrogen embrittlement, which were already implemented within their territory at the time of entry into force of this Regulation, until relevant technical requirements are established ~~as a part of global registry under the 1998~~

~~Agreement such as global technical regulation No. 13~~ **and implemented as an amendment to this Regulation.**

Annex 1 - Part 1

Model - I

Information document No ... on the type approval of a hydrogen storage system with regard to the safety-related performance of hydrogen-fuelled vehicles

The following information, if applicable, shall include a list of contents. Any drawings shall be supplied in appropriate scale and in sufficient detail on size A4 or on a folder of A4 format. Photographs, if any, shall show sufficient details.

If the systems or components have electronic controls, information concerning their performance shall be supplied.

- 0. General
 - 0.1. Make (trade name of manufacturer):
 - 0.2. Type:
 - 0.2.1. Commercial name(s) (if available):
 - 0.5. Name and address of manufacturer:
 - 0.8. Name(s) and address(es) of assembly plant(s):
 - 0.9. Name and address of the manufacturer's representative (if any):
- 3. Power Plant
 - 3.9. Hydrogen storage system
 - 3.9.1. Hydrogen storage system designed to use liquid / compressed (gaseous) hydrogen ¹
 - 3.9.1.1. Description and drawing of the hydrogen storage system:
 - 3.9.1.2. Make(s):
 - 3.9.1.3. Type(s):
 - 3.9.2. Container(s)
 - 3.9.2.1. Make(s):
 - 3.9.2.2. Type(s):
 - 3.9.2.3. Maximum Allowable Working Pressure (MAWP): MPa
 - 3.9.2.4. Nominal working pressure(s): MPa
 - 3.9.2.5. Number of filling cycles:
 - 3.9.2.6. Capacity: litres (water)

¹ Delete where not applicable (there are cases where nothing needs to be deleted when more than one entry is applicable).

- 3.9.2.7. Material:
- 3.9.2.8. Description and drawing:
- 3.9.3. Thermally-activated pressure relief device(s)
 - 3.9.3.1. Make(s):
 - 3.9.3.2. Type(s):
 - 3.9.3.3. Maximum Allowable Working Pressure (MAWP): MPa
 - 3.9.3.4. Set pressure:
 - 3.9.3.5. Set temperature:
 - 3.9.3.6. Blow off capacity:
 - 3.9.3.7. Normal maximum operating temperature: °C
 - 3.9.3.8. Nominal working pressure(s): MPa
 - 3.9.3.9. Material:
 - 3.9.3.9.10. Description and drawing:
 - 3.9.3.9.11. Approval number:
- 3.9.4. Check valve(s)
 - 3.9.4.1. Make(s):
 - 3.9.4.2. Type(s):
 - 3.9.4.3. Maximum Allowable Working Pressure (MAWP): MPa
 - 3.9.4.4. Nominal working pressure(s): MPa
 - 3.9.4.5. Material:
 - 3.9.4.6. Description and drawing:
 - 3.9.4.7. Approval number:
- 3.9.5. Automatic shut-off valve(s)
 - 3.9.5.1. Make(s):
 - 3.9.5.2. Type(s):
 - 3.9.5.3. Maximum Allowable Working Pressure (MAWP) : MPa
 - 3.9.5.4. Nominal working pressure(s) and if downstream of the first pressure regulator, maximum allowable working pressure(s): MPa:
 - 3.9.5.5. Material:
 - 3.9.5.6. Description and drawing:
 - 3.9.5.7. Approval number:

Model - II

Information document No ... on the type approval of specific component for a hydrogen storage system with regard to the safety-related performance of hydrogen-fuelled vehicles

The following information, if applicable, shall include a list of contents. Any drawings shall be supplied in appropriate scale and in sufficient detail on size A4 or on a folder of A4 format. Photographs, if any, shall show sufficient details.

If the components have electronic controls, information concerning their performance shall be supplied.

- 0. General
 - 0.1. Make (trade name of manufacturer):
 - 0.2. Type:
 - 0.2.1. Commercial name(s) (if available):
 - 0.5. Name and address of manufacturer:
 - 0.8. Name(s) and address(es) of assembly plant(s):
 - 0.9. Name and address of the manufacturer's representative (if any):
- 3. Power Plant
 - 3.9.3. Thermally-activated pressure relief device(s)
 - 3.9.3.1. Make(s):
 - 3.9.3.2. Type(s):
 - 3.9.3.3. Maximum Allowable Working Pressure (MAWP): MPa
 - 3.9.3.4. Set pressure:
 - 3.9.3.5. Set temperature:
 - 3.9.3.6. Blow off capacity:
 - 3.9.3.7. Normal maximum operating temperature: °C
 - 3.9.3.8. Nominal working pressure(s): MPa
 - 3.9.3.9. Material:
 - 3.9.3.10. Description and drawing:
 - 3.9.4. Check valve(s)
 - 3.9.4.1. Make(s):
 - 3.9.4.2. Type(s):
 - 3.9.4.3. Maximum Allowable Working Pressure (MAWP): MPa
 - 3.9.4.4. Nominal working pressure(s): MPa

- 3.9.4.5. Material:
- 3.9.4.6. Description and drawing:
- 3.9.5. Automatic shut-off valve(s)
 - 3.9.5.1. Make(s):
 - 3.9.5.2. Type(s):
 - 3.9.5.3. Maximum Allowable Working Pressure (MAWP) : MPa
 - 3.9.5.4. Nominal working pressure(s) and if downstream of the first pressure regulator, maximum allowable working pressure(s): MPa:
 - 3.9.5.5. Material:
 - 3.9.5.6. Description and drawing:

Model - III

Information document No ... on the type approval of a vehicle with regard to the safety-related performance of hydrogen-fuelled vehicles

The following information, if applicable, shall include a list of contents. Any drawings shall be supplied in appropriate scale and in sufficient detail on size A4 or on a folder of A4 format. Photographs, if any, shall show sufficient details.

If the systems or components have electronic controls, information concerning their performance shall be supplied.

- 0. General
 - 0.1. Make (trade name of manufacturer):
 - 0.2. Type:
 - 0.2.1. Commercial name(s) (if available):
 - 0.3. Means of identification of type, if marked on the vehicle ¹:
 - 0.3.1. Location of that marking:
 - 0.4. Category of vehicle ²:
 - 0.5. Name and address of manufacturer:
 - 0.8. Name(s) and address(es) of assembly plant(s):
 - 0.9. Name and address of the manufacturer's representative (if any):
- 1. General construction characteristics of the vehicle
 - 1.1. Photographs and/or drawings of a representative vehicle:
 - 1.3.3. Powered axles (number, position, interconnection):
 - 1.4. Chassis (if any) (overall drawing):
- 3. Power Plant
 - 3.9. Hydrogen storage system

¹ If means of identification of type contains characters not relevant to describe the vehicle type covered by this information document, such characters shall be represented in the documentation by the symbol "[.]" (e.g. [...]).

² As defined in the Consolidated Resolution on the Construction of Vehicles (R.E.3.), document ECE/TRANS/WP.29/78/Rev.2, para. 2. - www.unece.org/trans/main/wp29/wp29wgs/wp29gen/wp29resolutions.html

- 3.9.1. Hydrogen storage system designed to use liquid / compressed (gaseous) hydrogen ³
 - 3.9.1.1. Description and drawing of the hydrogen storage system:
 - 3.9.1.2. Make(s):
 - 3.9.1.3. Type(s):
 - 3.9.1.4. Approval Number:

- 3.9.6. Hydrogen leakage detection sensors:
 - 3.9.6.1. Make(s):
 - 3.9.6.2. Type(s):

- 3.9.7. Refuelling connection or receptacle
 - 3.9.7.1. Make(s):
 - 3.9.7.2. Type(s):

- 3.9.8. Drawings showing requirements for installation and operation.

³ Delete where not applicable (there are cases where nothing needs to be deleted when more than one entry is applicable).

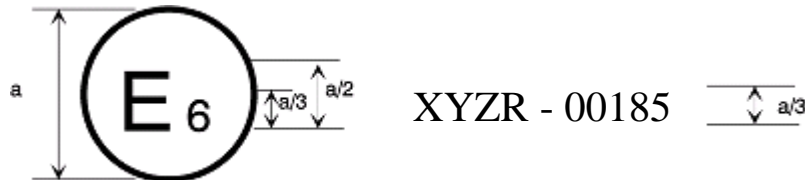
14. The information document annexed to this communication:
15. Any remarks:.....

15. Any remarks:.....

Annex 2

Arrangements of the approval marks

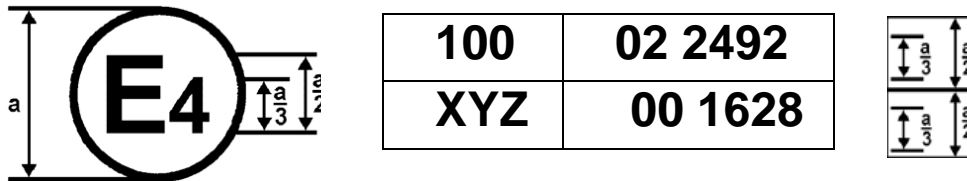
Model A (See paragraphs 4.4. to 4.4.2. of this Regulation)



$a = 8 \text{ mm min}$

The above approval mark affixed to a vehicle/ **storage system/specific** component shows that the vehicle/**storage system/specific component** type concerned has been approved in Belgium (E6) for its the safety-related performance of hydrogen-fuelled vehicles pursuant to Regulation No. XYZ. The first two digits of the approval number indicate that the approval was granted in accordance with the requirements of Regulation No. XYZ in its original form.

Model B (see Paragraph 4.5. of this Regulation)



$a = 8 \text{ mm min.}$

The above approval mark affixed to a vehicle shows that the road vehicle concerned has been approved in the Netherlands (E4) pursuant to Regulations Nos. XYZ and 100. * The approval number indicates that, at the dates when the respective approvals were granted, Regulation No. 100 was amended by the 02 series of amendments and Regulation No. XYZ was still in its original form.

* The latter number is given only as an example.

Annex 3

Test procedures for the compressed hydrogen storage system

1. Test procedures for qualification requirements of compressed hydrogen storage are organized as follows:
 - Paragraph 2 of this annex is the test procedures for baseline performance metrics (requirement of paragraph 5.1. of this Regulation)
 - Paragraph 3 of this annex is the test procedures for performance durability (requirement of paragraph 5.2. of this Regulation)
 - Paragraph 4 of this annex is the test procedures for expected on-road performance (requirement of paragraph 5.3. of this Regulation)
 - Paragraph 5 of this annex is the test procedures for service terminating performance in fire (requirement of paragraph 5.4. of this Regulation)
 - Paragraph 6 of this annex is the test procedures for performance durability of primary closures (requirement of paragraph 5.5. of this Regulation)
2. Test procedures for baseline performance metrics (requirement of paragraph 5. 1. of this Regulation)
 - 2.1. Burst test (hydraulic)

The burst test is conducted at 20 (± 5) °C using a non-corrosive fluid. The rate of pressurization is less than or equal to 1.4 MPa/sec for pressures higher than 150 per cent of the nominal working pressure. If the rate exceeds 0.35 MPa/sec at pressures higher than 150 per cent NWP, then either the container is placed in series between the pressure source and the pressure measurement device, or the time at the pressure above a target burst pressure exceeds 5 seconds. The burst pressure of the container shall be recorded.
 - 2.2. Pressure cycling test (hydraulic)

The test is performed in accordance with the following procedure:

 - (a) The container is filled with a non-corrosive fluid;
 - (b) The container and fluid are stabilized at the specified temperature and relative humidity at the start of testing; the environment, fuelling fluid and container skin are maintained at the specified temperature for the duration of the testing. The container temperature may vary from the environmental temperature during testing;
 - (c) The container is pressure cycled between 2 (± 1) MPa and the target pressure at a rate not exceeding 10 cycles per minute for the specified number of cycles;
 - (d) The temperature of the hydraulic fluid within the container is maintained and monitored at the specified temperature.
3. Test procedures for performance durability (requirement of paragraph 5.2. of this Regulation)

3.1. Proof pressure test

The system is pressurized smoothly and continually with a non-corrosive hydraulic fluid until the target test pressure level is reached and then held for the specified time.

3.2. Drop (impact) test (unpressurized)

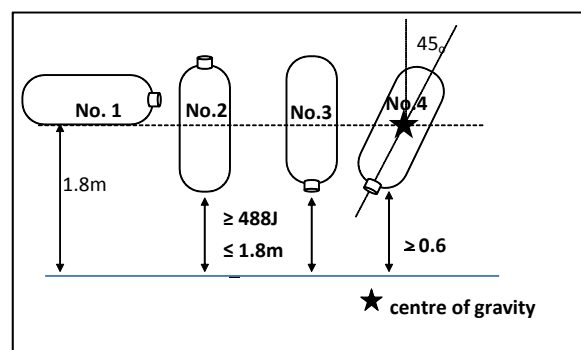
The storage container is drop tested at ambient temperature without internal pressurization or attached valves. The surface onto which the containers are dropped shall be a smooth, horizontal concrete pad or other flooring type with equivalent hardness.

The orientation of the container being dropped (in accordance with the requirement of paragraph 5.2.2.) is determined as follows: One or more additional container(s) shall be dropped in each of the orientations described below. The drop orientations may be executed with a single container or as many as four containers may be used to accomplish the four drop orientations.

- (i) Dropped once from a horizontal position with the bottom 1.8 m above the surface onto which it is dropped;
- (ii) Dropped once onto the end of the container from a vertical position with the ported end upward with a potential energy of not less than 488 J, with the height of the lower end no greater than 1.8 m;
- (iii) Dropped once onto the end of the container from a vertical position with the ported end downward with a potential energy of not less than 488 J, with the height of the lower end no greater than 1.8 m. If the container is symmetrical (identical ported ends), this drop orientation is not required;
- (iv) Dropped once at a 45° angle from the vertical orientation with a ported end downward with its centre of gravity 1.8 m above the ground. However, if the bottom is closer to the ground than 0.6 m, the drop angle shall be changed to maintain a minimum height of 0.6 m and a centre of gravity of 1.8 m above the ground.

The four drop orientations are illustrated in Figure 1.

Figure 1
Drop orientations



No attempt shall be made to prevent the bouncing of containers, but the containers may be prevented from falling over during the vertical drop tests described above.

If more than one container is used to execute all drop specifications, then those containers shall undergo pressure cycling according to Annex 3, paragraph 2.2. until either leakage or 22,000 cycles without leakage have occurred. Leakage shall not occur within 11,000 cycles.

The orientation of the container being dropped in accordance with the requirement of paragraph 5.2.2. shall be identified as follows:

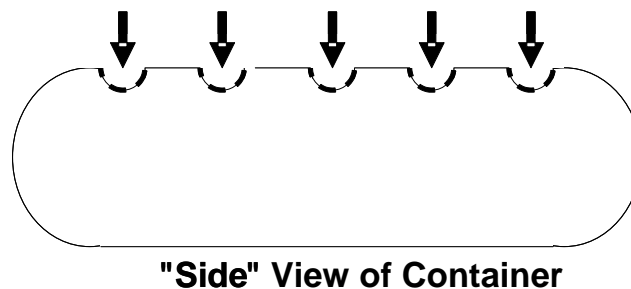
- (a) If a single container was subjected to all four drop orientations, then the container being dropped in accordance with the requirement of paragraph 5.2.2. shall be dropped in all four orientations;
- (b) If more than one container is used to execute the four drop orientations, and if all containers reach 22,000 cycles without leakage, then the orientation of the container being dropped in accordance with the requirement paragraph 5.2.2. is the 45° orientation (iv), and that container shall then undergo further testing as specified in paragraph 5.2. ;
- (c) If more than one container is used to execute the four drop orientations and if any container does not reach 22,000 cycles without leakage, then the new container shall be subjected to the drop orientation(s) that resulted in the lowest number of cycles to leakage and then will undergo further testing as specified in paragraph 5.2.

3.3. Surface damage test (unpressurized)

The test proceeds in the following sequence:

- (a) Surface flaw generation: Two longitudinal saw cuts are made on the bottom outer surface of the unpressurized horizontal storage container along the cylindrical zone close to but not in the shoulder area. The first cut is at least 1.25 mm deep and 25 mm long toward the valve end of the container. The second cut is at least 0.75 mm deep and 200 mm long toward the end of the container opposite the valve;
- (b) Pendulum impacts: The upper section of the horizontal storage container is divided into five distinct (not overlapping) areas 100 mm in diameter each (see Figure 2). After 12 hours preconditioning at ≤ -40 ~~(+2/0)~~ °C in an environmental chamber, the centre of each of the five areas sustains the impact of a pendulum having a pyramid with equilateral faces and square base, the summit and edges being rounded to a radius of 3 mm. The centre of impact of the pendulum coincides with the centre of gravity of the pyramid. The energy of the pendulum at the moment of impact with each of the five marked areas on the container is 30 J. The container is secured in place during pendulum impacts and not under pressure.

Figure 2
Side view of container



3.4. Chemical exposure and ambient-temperature pressure cycling test

Each of the 5 areas of the unpressurized container preconditioned by pendulum impact (Annex 3, paragraph 3.3.) is exposed to one of five solutions:

- (a) 19 per cent (by volume) sulphuric acid in water (battery acid);
- (b) 25 per cent (by weight) sodium hydroxide in water;
- (c) 5 per cent (by volume) methanol in gasoline (fluids in fuelling stations);
- (d) 28 per cent (by weight) ammonium nitrate in water (urea solution); and
- (e) 50 per cent (by volume) methyl alcohol in water (windshield washer fluid).

The test container is oriented with the fluid exposure areas on top. A pad of glass wool approximately 0.5 mm thick and 100 mm in diameter is placed on each of the five preconditioned areas. A sufficient amount of the test fluid is applied to the glass wool sufficient to ensure that the pad is wetted across its surface and through its thickness for the duration of the test.

The exposure of the container with the glass wool is maintained for 48 hours with the container held at 125 per cent NWP (+2/-0 MPa) (applied hydraulically) and 20 (± 5) °C before the container is subjected to further testing.

Pressure cycling is performed to the specified target pressures according to paragraph 6.2.2.2. at 20 (± 5) °C for the specified numbers of cycles. The glass wool pads are removed and the container surface is rinsed with water the final 10 cycles to specified final target pressure are conducted.

3.5. Static pressure test (hydraulic)

The storage system is pressurized to the target pressure in a temperature-controlled chamber. The temperature of the chamber and the non-corrosive fuelling fluid is held at the target temperature within ± 5 °C for the specified duration.

4. Test procedures for expected on-road performance (paragraph 5.3. of this Regulation)

(Pneumatic test procedures are provided; hydraulic test elements are described in Annex 3, paragraph 2.1.)

4.1. Gas pressure cycling test (pneumatic)

At the onset of testing, the storage system is stabilized at the specified temperature, relative humidity and fuel level for at least 24 hours. The specified temperature and relative humidity is maintained within the test environment throughout the remainder of the test. (When required in the test specification, the system temperature is stabilized at the external environmental temperature between pressure cycles.) The storage system is pressure cycled between less than 2 (+0/-1) MPa and the specified maximum pressure (± 1 MPa). If system controls that are active in vehicle service prevent the pressure from dropping below a specified pressure, the test cycles shall not go below that specified pressure. The fill rate is controlled to a constant 3-minute pressure ramp rate, but with the fuel flow not to exceed 60 g/sec; the temperature of the hydrogen fuel dispensed to the container is controlled to the specified temperature. However, the pressure ramp rate should be decreased if the gas temperature in the container exceeds +85 °C. The defuelling rate is controlled to greater than or equal to the intended vehicle's maximum fuel-demand rate. The specified number of pressure cycles is conducted. If devices and/or controls are used in the intended vehicle application to prevent an extreme internal temperature, the test may be conducted with these devices and/or controls (or equivalent measures).

4.2. Gas permeation test (pneumatic)

A storage system is fully filled with hydrogen gas at 115 per cent NWP (+2/-0 MPa) (full fill density equivalent to 100 per cent NWP at +15 °C is 113 per cent NWP at +55 °C) and held at $\geq +55$ °C in a sealed container until steady-state permeation or 30 hours, whichever is longer. The total steady-state discharge rate due to leakage and permeation from the storage system is measured.

4.3. Localized gas leak test (pneumatic)

A bubble test may be used to fulfil this requirement. The following procedure is used when conducting the bubble test:

- (a) The exhaust of the shut-off valve (and other internal connections to hydrogen systems) shall be capped for this test (as the test is focused on external leakage).

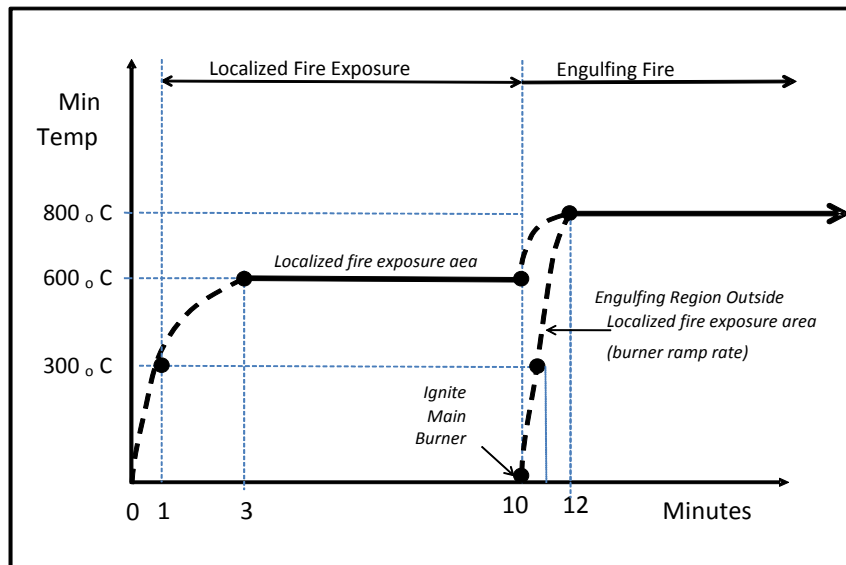
At the discretion of the tester, the test article may be immersed in the leak-test fluid or leak-test fluid applied to the test article when resting in open air. Bubbles can vary greatly in size, depending on conditions. The tester estimates the gas leakage based on the size and rate of bubble formation.

- (b) *Note:* For a localized rate of 0.005 mg/sec (3.6 Nml/min), the resultant allowable rate of bubble generation is about 2,030 bubbles per minute for a typical bubble size of 1.5 mm in diameter. Even if much larger bubbles are formed, the leak should be readily detectable. For an unusually large bubble size of 6 mm in diameter, the allowable bubble rate would be approximately 32 bubbles per minute.

5. Test procedures for service terminating performance in fire (paragraph 5.4. of this Regulation)
- 5.1. Fire test
- The hydrogen container assembly consists of the compressed hydrogen storage system with additional relevant features, including the venting system (such as the vent line and vent line covering) and any shielding affixed directly to the container (such as thermal wraps of the container(s) and/or coverings/barriers over the TPRD(s)).
- Either one of the following two methods are used to identify the position of the system over the initial (localized) fire source:
- (a) Method 1: Qualification for a generic (non-Specific) vehicle installation
- If a vehicle installation configuration is not specified (and the type approval of the system is not limited to a specific vehicle installation configuration) then the localized fire exposure area is the area on the test article farthest from the TPRD(s). The test article, as specified above, only includes thermal shielding or other mitigation devices affixed directly to the container that are used in all vehicle applications. Venting system(s) (such as the vent line and vent line covering) and/or coverings/barriers over the TPRD(s) are included in the container assembly if they are anticipated for use in any application. If a system is tested without representative components, retesting of that system is required if a vehicle application specifies the use of these type of components.
- (b) Method 2: Qualification for a specific vehicle installation
- If a specific vehicle installation configuration is specified and the type approval of the system is limited to that specific vehicle installation configuration, then the test setup may also include other vehicle components in addition to the hydrogen storage system. These vehicle components (such as shielding or barriers, which are permanently attached to the vehicle's structure by means of welding or bolts and not affixed to the storage system) shall be included in the test setup in the vehicle-installed configuration relative to the hydrogen storage system. This localized fire test is conducted on the worst case localized fire exposure areas based on the four fire orientations: fires originating from the direction of the passenger compartment, luggage compartment, wheel wells or ground-pooled gasoline.
- 5.1.1. The container may be subjected to engulfing fire without any shielding components, as described in Annex 3, paragraph 5.2.
- 5.1.2. The following test requirements apply whether Method 1 or 2 (above) is used:
- (a) The container assembly is filled with compressed hydrogen gas at 100 per cent of NWP (+2/-0 MPa). The container assembly is positioned horizontally approximately 100 mm above the fire source;
- (b) Localized portion of the fire test:

- (i) The localized fire exposure area is located on the test article furthest from the TPRD(s). If Method 2 is selected and more vulnerable areas are identified for a specific vehicle installation configuration, the more vulnerable area that is furthest from the TPRD(s) is positioned directly over the initial fire source;
- (ii) The fire source consists of LPG burners configured to produce a uniform minimum temperature on the test article measured with a minimum 5 thermocouples covering the length of the test article up to 1.65 m maximum (at least 2 thermocouples within the localized fire exposure area, and at least 3 thermocouples equally spaced and no more than 0.5 m apart in the remaining area) located 25 (± 10) mm from the outside surface of the test article along its longitudinal axis. At the option of the manufacturer or testing facility, additional thermocouples may be located at TPRD sensing points or any other locations for optional diagnostic purposes;
- (iii) Wind shields are applied to ensure uniform heating;
- (iv) The fire source initiates within a 250 (± 50) mm longitudinal expanse positioned under the localized fire exposure area of the test article. The width of the fire source encompasses the entire diameter (width) of the storage system. If Method 2 is selected, the length and width shall be reduced, if necessary, to account for vehicle-specific features;
- (v) As shown in Figure 3 the temperature of the thermocouples in the localized fire exposure area has increased continuously to at least 300 °C within 1 minute of ignition, to at least 600 °C within 3 minutes of ignition, and a temperature of at least 600 °C is maintained for the next 7 minutes. The temperature in the localized fire **exposure** area shall not exceed 900 °C during this period. Compliance to the thermal requirements begins 1 minute after entering the period with minimum and maximum limits and is based on a 1-minute rolling average of each thermocouple in the region of interest. (*Note: The temperature outside the region of the initial fire source is not specified during these initial 10 minutes from the time of ignition.*)

Figure 3
Temperature profile of fire test



(c) Engulfing portion of the fire test

Within the next 2-minute interval, the temperature along the entire surface of the test article shall be increased to at least 800 °C and the fire source is extended to produce a uniform temperature along the entire length up to 1.65 m and the entire width of the test article (engulfing fire). The minimum temperature is held at 800 °C, and the maximum temperature shall not exceed 1,100 °C. Compliance to thermal requirements begins 1 minute after entering the period with constant minimum and maximum limits and is based on a 1-minute rolling average of each thermocouple.

The test article is held at temperature (engulfing fire condition) until the system vents through the TPRD and the pressure falls to less than 1 MPa. The venting shall be continuous (without interruption), and the storage system shall not rupture. An additional release through leakage (not including release through the TPRD) that results in a flame with length greater than 0.5 m beyond the perimeter of the applied flame shall not occur.

Table 1
Summary of fire test protocol

	<i>Localized Fire Region</i>	<i>Time Period</i>	<i>Engulfing Fire Region (Outside the Localized Fire Region)</i>
Action	Ignite Burners	0-1 Minute	No Burner Operation
Minimum temperature	Not specified		Not specified
Maximum temperature	Less than 900°C		Not specified
Action	Increase temperature and stabilize fire for start of localized fire exposure	1-3 Minutes	No Burner Operation
Minimum temperature	Greater than 300°C		Not specified
Maximum temperature	Less than 900°C		Not specified
Action	Localized fire exposure continues		No Burner Operation
Minimum temperature	1-minute rolling average greater than 600°C		Not specified
Maximum temperature	1-minute rolling average less than 900°C	3-10 Minutes	Not specified
Action	Increase temperature		Main Burner Ignited at 10 minutes
Minimum Temperature	1-minute rolling average greater than 600°C		Not specified
Maximum temperature	1-minute rolling average less than 1,100°C	10-11 Minutes	Less than 1,100°C
Action	Increase temperature and stabilize fire for start of engulfing fire exposure		Increase temperature and stabilize fire for start of engulfing fire exposure
Minimum temperature	1-minute rolling average greater than 600°C		Greater than 300°C
Maximum temperature	1 minute rolling average less than 1,100°C	11-12 Minutes	Less than 1,100°C
Action	Engulfing fire exposure continues		Engulfing fire exposure continues
Minimum temperature	1-minute rolling average greater than 800°C		1-minute rolling average Greater than 800°C
Maximum temperature	1 minute rolling average less than 1,100°C	12 Minutes - end of test	1-minute rolling average less than 1,100°C

(d) Documenting results of the fire test

The arrangement of the fire is recorded in sufficient detail to ensure the rate of heat input to the test article is reproducible. The results include the elapsed time from ignition of the fire to the start of venting through the TPRD(s), and the maximum pressure and time of evacuation until a pressure of less than 1 MPa is reached. Thermocouple temperatures and container pressure are recorded at intervals of every 10 sec or less during the test. Any failure to maintain specified minimum temperature requirements based on the 1-minute rolling averages invalidates the test result. Any failure to maintain specified maximum temperature requirements based on the 1-minute rolling averages invalidates the test result only if the test article failed during the test.

5.2. Engulfing fire test:

The test unit is the compressed hydrogen storage system. The storage system is filled with compressed hydrogen gas at 100 per cent NWP (+2/-0 MPa). The container is positioned horizontally with the container bottom approximately 100 mm above the fire source. Metallic shielding is used to prevent direct flame impingement on container valves, fittings, and/or pressure relief devices. The metallic shielding is not in direct contact with the specified fire protection system (pressure relief devices or container valve).

A uniform fire source of 1.65 m length provides direct flame impingement on the container surface across its entire diameter. The test shall continue until the container fully vents (until the container pressure falls below 0.7 MPa). Any failure or inconsistency of the fire source during a test shall invalidate the result.

Flame temperatures shall be monitored by at least three thermocouples suspended in the flame approximately 25 mm below the bottom of the container. Thermocouples may be attached to steel cubes up to 25 mm on a side. Thermocouple temperature and the container pressure shall be recorded every 30 seconds during the test.

Within five minutes after the fire is ignited, an average flame temperature of not less than 590 °C (as determined by the average of the two thermocouples recording the highest temperatures over a 60 second interval) is attained and maintained for the duration of the test.

If the container is less than 1.65 m in length, the centre of the container shall be positioned over the centre of the fire source. If the container is greater than 1.65 m in length, then if the container is fitted with a pressure relief device at one end, the fire source shall commence at the opposite end of the container. If the container is greater than 1.65 m in length and is fitted with pressure relief devices at both ends, or at more than one location along the length of the container, the centre of the fire source shall be centred midway between the pressure relief devices that are separated by the greatest horizontal distance.

The container shall vent through a pressure relief device without bursting.

Annex 4

Test procedures for specific components for the compressed hydrogen storage system

1. TPRD Qualification Performance Tests

Testing is performed with hydrogen gas having gas quality compliant with ISO 14687-2/SAE J2719. All tests are performed at ambient temperature 20 (± 5) °C unless otherwise specified. The TPRD qualification performance tests are specified as follows (see also Appendix 1):

1.1. Pressure cycling test.

Five TPRD units undergo 11,000 internal pressure cycles with hydrogen gas having gas quality compliant with ISO 14687-2/SAE J2719. The first five pressure cycles are between 2 (± 1) MPa and 150 per cent NWP (± 1 MPa); the remaining cycles are between 2 (± 1) MPa and 125 per cent NWP (± 1 MPa). The first 1,500 pressure cycles are conducted at a TPRD temperature of 85 °C or higher. The remaining cycles are conducted at a TPRD temperature of 55 (± 5) °C. The maximum pressure cycling rate is ten cycles per minute. Following this test, the pressure relief device shall comply the requirements of Leak test (Annex 4, paragraph 1.8.), Flow rate test (Annex 4, paragraph 1.10.) and Bench top activation test (Annex 4 paragraph 1.9.).

1.2. Accelerated life test.

Eight TPRD units undergo testing; three at the manufacturer's specified activation temperature, Tact, and five at an accelerated life temperature, Tlife = $9.1 \times Tact^{0.503}$. The TPRD is placed in an oven or liquid bath with the temperature held constant (± 1 °C). The hydrogen gas pressure on the TPRD inlet is 125 per cent NWP (± 1 MPa). The pressure supply may be located outside the controlled temperature oven or bath. Each device is pressured individually or through a manifold system. If a manifold system is used, each pressure connection includes a check valve to prevent pressure depletion of the system when one specimen fails. The three TPRDs tested at Tact shall activate in less than ten hours. The five TPRDs tested at Tlife shall not activate in less than 500 hours.

1.3. Temperature cycling test

- (a) An unpressurized TPRD is placed in a liquid bath maintained at -40 °C or lower at least two hours. The TPRD is transferred to a liquid bath maintained at +85 °C or higher within five minutes, and maintained at that temperature at least two hours. The TPRD is transferred to a liquid bath maintained at -40 °C or lower within five minutes;
- (b) Step (a) is repeated until 15 thermal cycles have been achieved;
- (c) With the TPRD conditioned for a minimum of two hours in the -40 °C or lower liquid bath, the internal pressure of the TPRD is cycled with hydrogen gas between 2 MPa (+1/-0 MPa) and 80 per cent NWP (+2/-0 MPa) for 100 cycles while the liquid bath is maintained at -40 °C or lower;

- (d) Following the thermal and pressure cycling, the pressure relief device shall comply with the requirements of Leak test (Annex 4, paragraph 1.8.), except that the Leak test shall be conducted at $-40\text{ }^{\circ}\text{C}$ ($+5/-0\text{ }^{\circ}\text{C}$). After the Leak test, the TPRD shall comply with the requirements of Bench top activation test (Annex 4, paragraph 1.9.) and then Flow rate test (Annex 4, paragraph 1.10.).

1.4. Salt corrosion resistance test

Two TPRD units are tested. Any non-permanent outlet caps are removed. Each TPRD unit is installed in a test fixture in accordance with the manufacturer's recommended procedure so that external exposure is consistent with realistic installation. Each unit is exposed for 500 hours to a salt spray (fog) test as specified in ASTM B117 (Standard Practice for Operating Salt Spray (Fog) Apparatus) except that in the test of one unit, the pH of the salt solution shall be adjusted to 4.0 ± 0.2 by the addition of sulphuric acid and nitric acid in a 2:1 ratio, and in the test of the other unit, the pH of the salt solution shall be adjusted to 10.0 ± 0.2 by the addition of sodium hydroxide. The temperature within the fog chamber is maintained at $30\text{-}35\text{ }^{\circ}\text{C}$.

Following these tests, each pressure relief device shall comply with the requirements of Leak test (Annex 3, paragraph 6.1.8.), Flow rate test (Annex 3, paragraph 6.1.10.) and Bench top activation test (Annex 3, paragraph 6.1.9.).

1.5. Vehicle environment test

Resistance to degradation by external exposure to automotive fluids is determined by the following test:

- (a) The inlet and outlet connections of the TPRD are connected or capped in accordance with the manufacturers installation instructions. The external surfaces of the TPRD are exposed for 24 hours at $20 (\pm 5)\text{ }^{\circ}\text{C}$ to each of the following fluids:
 - (i) Sulphuric acid (19 per cent solution by volume in water);
 - (ii) Sodium hydroxide (25 per cent solution by weight in water);
 - (iii) Ammonium nitrate (28 per cent by weight in water); and
 - (iv) Windshield washer fluid (50 per cent by volume methyl alcohol and water).

The fluids are replenished as needed to ensure complete exposure for the duration of the test. A distinct test is performed with each of the fluids. One component may be used for exposure to all of the fluids in sequence.

- (b) After exposure to each fluid, the component is wiped off and rinsed with water;
- (c) The component shall not show signs of physical degradation that could impair the function of the component, specifically: cracking, softening, or swelling. Cosmetic changes such as pitting or staining are not failures. At the conclusion of all exposures, the unit(s) shall comply with the requirements of Leak test (Annex 4, paragraph 1.8.),

Flow rate test (Annex 4, paragraph 1.10.) and Bench top activation test (Annex 4, paragraph 1.9.).

1.6. Stress corrosion cracking test.

For TPRDs containing components made of a copper-based alloy (e.g. brass), one TPRD unit is tested. All copper alloy components exposed to the atmosphere shall be degreased and then continuously exposed for ten days to a moist ammonia-air mixture maintained in a glass chamber having a glass cover.

Aqueous ammonia having a specific gravity of 0.94 is maintained at the bottom of the glass chamber below the sample at a concentration of at least 20 ml per litre of chamber volume. The sample is positioned 35 (± 5) mm above the aqueous ammonia solution and supported in an inert tray. The moist ammonia-air mixture is maintained at atmospheric pressure at 35 (± 5) °C. Copper-based alloy components shall not exhibit cracking or delaminating due to this test.

1.7. Drop and vibration test

(a) Six TPRD units are dropped from a height of 2 m at ambient temperature (20 ± 5 °C) onto a smooth concrete surface. Each sample is allowed to bounce on the concrete surface after the initial impact. One unit is dropped in six orientations (opposing directions of 3 orthogonal axes: vertical, lateral and longitudinal). If each of the six dropped samples does not show visible exterior damage that indicates that the part is unsuitable for use, it shall proceed to step (b) ;

(b) Each of the six TPRD units dropped in step (a) and one additional unit not subjected to a drop are mounted in a test fixture in accordance with manufacturer's installation instructions and vibrated 30 minutes along each of the three orthogonal axes (vertical, lateral and longitudinal) at the most severe resonant frequency for each axis. The most severe resonant frequencies are determined using an acceleration of 1.5 g and sweeping through a sinusoidal frequency range of 10 to 500 Hz within 10 minutes. The resonance frequency is identified by a pronounced increase in vibration amplitude. If the resonance frequency is not found in this range, the test shall be conducted at 40 Hz. Following this test, each sample shall not show visible exterior damage that indicates that the part is unsuitable for use. It shall subsequently comply with the requirements of Leak test (Annex 4, paragraph 1.8.), Flow rate test (Annex 4, paragraph 1.10.) and Bench top activation test (Annex 4, paragraph 1.9.).

1.8. Leak test

A TPRD that has not undergone previous testing is tested at ambient, high and low temperatures without being subjected to other design qualification tests. The unit is held for one hour at each temperature and test pressure before testing. The three temperature test conditions are:

(a) Ambient temperature: condition the unit at 20 (± 5) °C; test at 5 per cent NWP (+0/-2 MPa) and 150 per cent NWP (+2/-0 MPa) ;

(b) High temperature: condition the unit at 85 °C or higher; test at 5 per cent NWP (+0/-2 MPa) and 150 per cent NWP (+2/-0 MPa) ;

- (c) Low temperature: condition the unit at -40 °C or lower; test at 5 per cent NWP (+0/-2 MPa) and 100 per cent NWP (+2/-0 MPa).

Additional units undergo leak testing as specified in other tests in Annex 4, paragraph 1. with uninterrupted exposure at the temperature specified in those tests.

At all specified test temperatures, the unit is conditioned for one minute by immersion in a temperature controlled fluid (or equivalent method). If no bubbles are observed for the specified time period, the sample passes the test. If bubbles are detected, the leak rate is measured by an appropriate method. The total hydrogen leak rate shall be less than 10 Nml/hr.

1.9. Bench top activation test

Two new TPRD units are tested without being subjected to other design qualification tests in order to establish a baseline time for activation. Additional pre-tested units (pre-tested according to Annex 4, paragraphs 1.1., 1.3., 1.4., 1.5. or 1.7.) undergo bench top activation testing as specified in other tests in Annex 4, paragraph 1.

- (a) The test setup consists of either an oven or chimney which is capable of controlling air temperature and flow to achieve 600 (± 10) °C in the air surrounding the TPRD. The TPRD unit is not exposed directly to flame. The TPRD unit is mounted in a fixture according to the manufacturer's installation instructions; the test configuration is to be documented;
- (b) A thermocouple is placed in the oven or chimney to monitor the temperature. The temperature remains within the acceptable range for two minutes prior to running the test;
- (c) The pressurized TPRD unit is inserted into the oven or chimney, and the time for the device to activate is recorded. Prior to insertion into the oven or chimney, one new (not pre-tested) TPRD unit is pressurized to no more than 25 per cent NWP (the pre-tested); TPRD units are pressurized to no more than 25 per cent NWP; and one new (not pre-tested) TPRD unit is pressurized to 100 per cent NWP;
- (d) TPRD units previously subjected to other tests in Annex 4, paragraph 1. shall activate within a period no more than two minutes longer than the baseline activation time of the new TPRD unit that was pressurized to up to 25 per cent NWP;
- (e) The difference in the activation time of the two TPRD units that had not undergone previous testing shall be no more than 2 minutes.

1.10. Flow rate test

- (a) Eight TPRD units are tested for flow capacity. The eight units consist of three new TPRD units and one TPRD unit from each of the following previous tests: Annex 4, paragraphs 1.1., 1.3., 1.4., 1.5. and 1.7. ;
- (b) Each TPRD unit is activated according to Annex 4, paragraph 1.9. After activation and without cleaning, removal of parts, or reconditioning, each TPRD unit is subjected to flow test using hydrogen, air or an inert gas;

- (c) Flow rate testing is conducted with a gas inlet pressure of 2 (± 0.5) MPa. The outlet is at ambient pressure. The inlet temperature and pressure are recorded;
- (d) Flow rate is measured with accuracy within ± 2 per cent. The lowest measured value of the eight pressure relief devices shall not be less than 90 per cent of the highest flow value.

2. Tests for check valve and shut-off valve

Testing shall be performed with hydrogen gas having gas quality compliant with ISO 14687-2/SAE J2719. All tests are performed at ambient temperature 20 (± 5) °C unless otherwise specified. The check valve and shut-off valve qualification performance tests are specified as follows (see also Appendix 2):

2.1. Hydrostatic strength test

The outlet opening in components is plugged and valve seats or internal blocks are made to assume the open position. One unit is tested without being subjected to other design qualification tests in order to establish a baseline burst pressure, other units are tested as specified in subsequent tests of Annex 4, paragraph 2.

- (a) A hydrostatic pressure of 250 per cent NWP ($+2/-0$ MPa) is applied to the inlet of the component for three minutes. The component is examined to ensure that rupture has not occurred;
- (b) The hydrostatic pressure is then increased at a rate of less than or equal to 1.4 MPa/sec until component failure. The hydrostatic pressure at failure is recorded. The failure pressure of previously tested units shall be no less than 80 per cent of the failure pressure of the baseline, unless the hydrostatic pressure exceeds 400 per cent NWP.

2.2. Leak test

One unit that has not undergone previous testing is tested at ambient, high and low temperatures without being subjected to other design qualification tests. The three temperature test conditions are:

- (a) Ambient temperature: condition the unit at 20 (± 5) °C; test at 5 per cent NWP ($+0/-2$ MPa) and 150 per cent NWP ($+2/-0$ MPa) ;
- (b) High temperature: condition the unit at 85 °C or higher ; test at 5 per cent NWP ($+0/-2$ MPa) and 150 per cent NWP ($+2/-0$ MPa) ;
- (c) Low temperature: condition the unit at -40 °C or lower; test at 5 per cent NWP ($+0/-2$ MPa) and 100 per cent NWP ($+2/-0$ MPa).

Additional units undergo leak testing as specified in other tests in Annex 4, paragraph 2. with uninterrupted exposure at the temperatures specified in those tests.

The outlet opening is plugged with the appropriate mating connection and pressurized hydrogen is applied to the inlet. At all specified test temperatures, the unit is conditioned for one minute by immersion in a temperature controlled fluid (or equivalent method). If no bubbles are observed for the specified time period, the sample passes the test. If bubbles are detected, the

leak rate is measured by an appropriate method. The leak rate shall not exceed 10 Nml/hr of hydrogen gas.

2.3. Extreme temperature pressure cycling test

- (a) The total number of operational cycles is 11,000 for the check valve and 50,000 for the shut-off valve. The valve unit are installed in a test fixture corresponding to the manufacturer's specifications for installation. The operation of the unit is continuously repeated using hydrogen gas at all specified pressures.

An operational cycle shall be defined as follows:

- (i) A check valve is connected to a test fixture and 100 per cent NWP (+2/-0 MPa) is applied in six step pulses to the check valve inlet with the outlet closed. The pressure is then vented from the check valve inlet. The pressure is lowered on the check valve outlet side to less than 60 per cent NWP prior to the next cycle;
- (ii) A shut-off valve is connected to a test fixture and pressure is applied continuously to the both the inlet and outlet sides.

An operational cycle consists of one full operation and reset.

- (b) Testing is performed on a unit stabilized at the following temperatures:
- (i) Ambient temperature cycling. The unit undergoes operational (open/closed) cycles at 125 per cent NWP (+2/-0 MPa) through 90 per cent of the total cycles with the part stabilized at 20 (± 5) °C. At the completion of the ambient temperature operational cycles, the unit shall comply with the ambient temperature leak test specified in Annex 4, paragraph 2.2. ;
- (ii) High temperature cycling. The unit then undergoes operational cycles at 125 per cent NWP (+2/-0 MPa) through 5 per cent of the total operational cycles with the part stabilized at 85 °C or higher. At the completion of the 85 °C cycles, the unit shall comply with the high temperature (85 °C) leak test specified in Annex 4, paragraph 2.2. ;
- (iii) Low temperature cycling. The unit then undergoes operational cycles at 100 per cent NWP (+2/-0 MPa) through 5 per cent of the total cycles with the part stabilized at -40 °C or lower. At the completion of the -40 °C operational cycles, the unit shall comply with the low temperature (-40 °C) leak test specified in Annex 4, paragraph 2.2.
- (c) Check valve chatter flow test: Following 11,000 operational cycles and leak tests in Annex 4, paragraph 2.3.(b), the check valve is subjected to 24 hours of chatter flow at a flow rate that causes the most chatter (valve flutter). At the completion of the test the check valve shall comply with the ambient temperature leak test (Annex 4, paragraph 2.2.) and the strength test (Annex 4, paragraph 2.1.).

2.4. Salt corrosion resistance test

The component is supported in its normally installed position and exposed for 500 hours to a salt spray (fog) test as specified in ASTM B117 (Standard Practice for Operating Salt Spray (Fog) Apparatus). The temperature within the fog chamber is maintained at 30 — 35 °C). The saline solution consists of 5 per cent sodium chloride and 95 per cent distilled water, by weight.

Immediately after the corrosion test, the sample is rinsed and gently cleaned of salt deposits, examined for distortion, and then shall comply with the requirements of:

- (a) The component shall not show signs of physical degradation that could impair the function of the component, specifically: cracking, softening or swelling. Cosmetic changes such as pitting or staining are not failures;
- (b) The ambient temperature leak test (Annex 4, paragraph 2.2.);
- (c) The hydrostatic strength test (Annex 4, paragraph 2.1.).

2.5. Vehicle environment test

Resistance to degradation by exposure to automotive fluids is determined by the following test.

- (a) The inlet and outlet connections of the valve unit are connected or capped in accordance with the manufacturers installation instructions. The external surfaces of the valve unit are exposed for 24 hours at 20 (±5) °C to each of the following fluids:
 - (i) Sulphuric acid -19 per cent solution by volume in water;
 - (ii) Sodium hydroxide -25 per cent solution by weight in water;
 - (iii) Ammonium nitrate -28 per cent by weight in water; and
 - (iv) Windshield washer fluid (50 per cent by volume methyl alcohol and water).

The fluids are replenished as needed to ensure complete exposure for the duration of the test. A distinct test is performed with each of the fluids. One component may be used for exposure to all of the fluids in sequence.

- (b) After exposure to each chemical, the component is wiped off and rinsed with water;
- (c) The component shall not show signs of physical degradation that could impair the function of the component, specifically: cracking, softening, or swelling. Cosmetic changes such as pitting or staining are not failures. At the conclusion of all exposures, the unit(s) shall comply with the requirements of the ambient temperature leakage test (Annex 4, paragraph 2.2.) and Hydrostatic Strength Test (Annex 4, paragraph 2.1.).

2.6. Atmospheric exposure test

The atmospheric exposure test applies to qualification of check valve and automatic shut-off valves if the component has non-metallic materials exposed to the atmosphere during normal operating conditions.

- (a) All non-metallic materials that provide a fuel containing seal, and that are exposed to the atmosphere, for which a satisfactory declaration of properties is not submitted by the applicant, shall not crack or show visible evidence of deterioration after exposure to oxygen for 96 hours at 70 °C at 2 MPa in accordance with ASTM D572 (Standard Test Method for Rubber- Deterioration by Heat and Oxygen);
- (b) All elastomers shall demonstrate resistance to ozone by one or more of the following:
 - (i) Specification of elastomer compounds with established resistance to ozone;
 - (ii) Component testing in accordance with ISO 1431/1, ASTM D1149, or equivalent test methods.

2.7. Electrical Tests

The electrical tests apply to qualification of the automatic shut-off valve; they do not apply to qualification of check valves.

- (a) Abnormal voltage test. The solenoid valve is connected to a variable DC voltage source. The solenoid valve is operated as follows:
 - (i) An equilibrium (steady state temperature) hold is established for one hour at 1.5 times the rated voltage;
 - (ii) The voltage is increased to two times the rated voltage or 60 volts, whichever is less, and held for one minute;
 - (iii) Any failure shall not result in external leakage, open valve or unsafe conditions such as smoke, fire or melting.

The minimum opening voltage at NWP and room temperature shall be less than or equal to 9 V for a 12 V system and less than or equal to 18 V for a 24 V system.

- (b) Insulation resistance test. 1,000 V D.C. is applied between the power conductor and the component casing for at least two seconds. The minimum allowable resistance for that component is 240 kΩ.

2.8. Vibration test

The valve unit is pressurized to its 100 per cent NWP (+2/-0 MPa) with hydrogen, sealed at both ends, and vibrated for 30 minutes along each of the three orthogonal axes (vertical, lateral and longitudinal) at the most severe resonant frequencies. The most severe resonant frequencies are determined by acceleration of 1.5 g with a sweep time of 10 minutes within a sinusoidal frequency range of 10 to 40 Hz. If the resonance frequency is not found in this range the test is conducted at 40Hz. Following this test, each sample shall not show visible exterior damage that indicates that the performance of the part is compromised. At the completion of the test, the unit shall comply with the requirements of the ambient temperature leak test specified in Annex 4, paragraph 2.2.

2.9. Stress corrosion cracking test

For the valve units containing components made of a copper-based alloy (e.g. brass), one valve unit is tested. The valve unit is disassembled, all copper-based alloy components are degreased and then the valve unit is reassembled

before it is continuously exposed for ten days to a moist ammonia-air mixture maintained in a glass chamber having a glass cover.

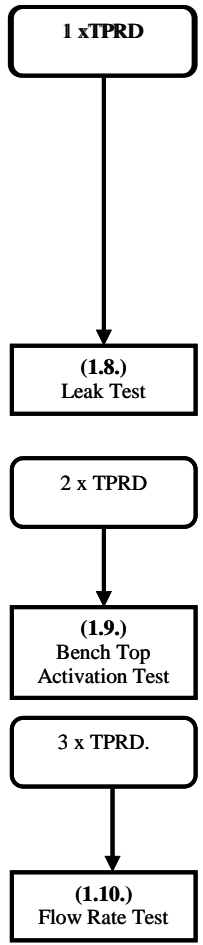
Aqueous ammonia having a specific gravity of 0.94 is maintained at the bottom of the glass chamber below the sample at a concentration of at least 20 ml per litre of chamber volume. The sample is positioned 35 (\pm 5) mm above the aqueous ammonia solution and supported in an inert tray. The moist ammonia-air mixture is maintained at atmospheric pressure at 35 (\pm 5) °C. Copper-based alloy components shall not exhibit cracking or delaminating due to this test.

2.10. Pre-cooled hydrogen exposure test

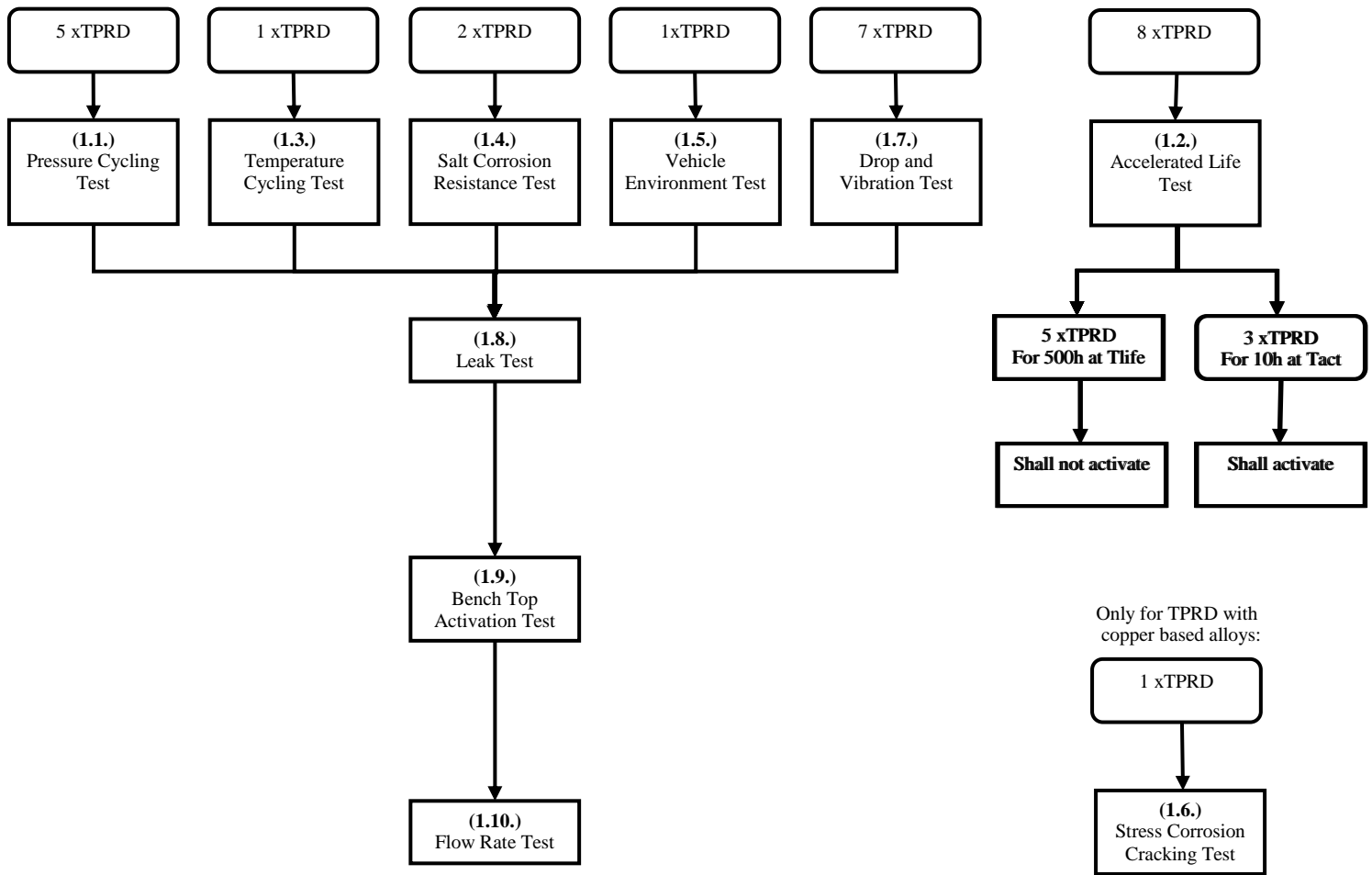
The valve unit is subjected to pre-cooled hydrogen gas at -40 °C or lower at a flow rate of 30 g/sec at external temperature of 20 (\pm 5) °C for a minimum of three minutes. The unit is de-pressurized and re-pressurized after a two minute hold period. This test is repeated ten times. This test procedure is then repeated for an additional ten cycles, except that the hold period is increased to 15 minutes. The unit shall then comply with the requirements of the ambient temperature leak test specified in Annex 4, paragraph 2.2.

Appendix 1 - Overview of TPRD tests

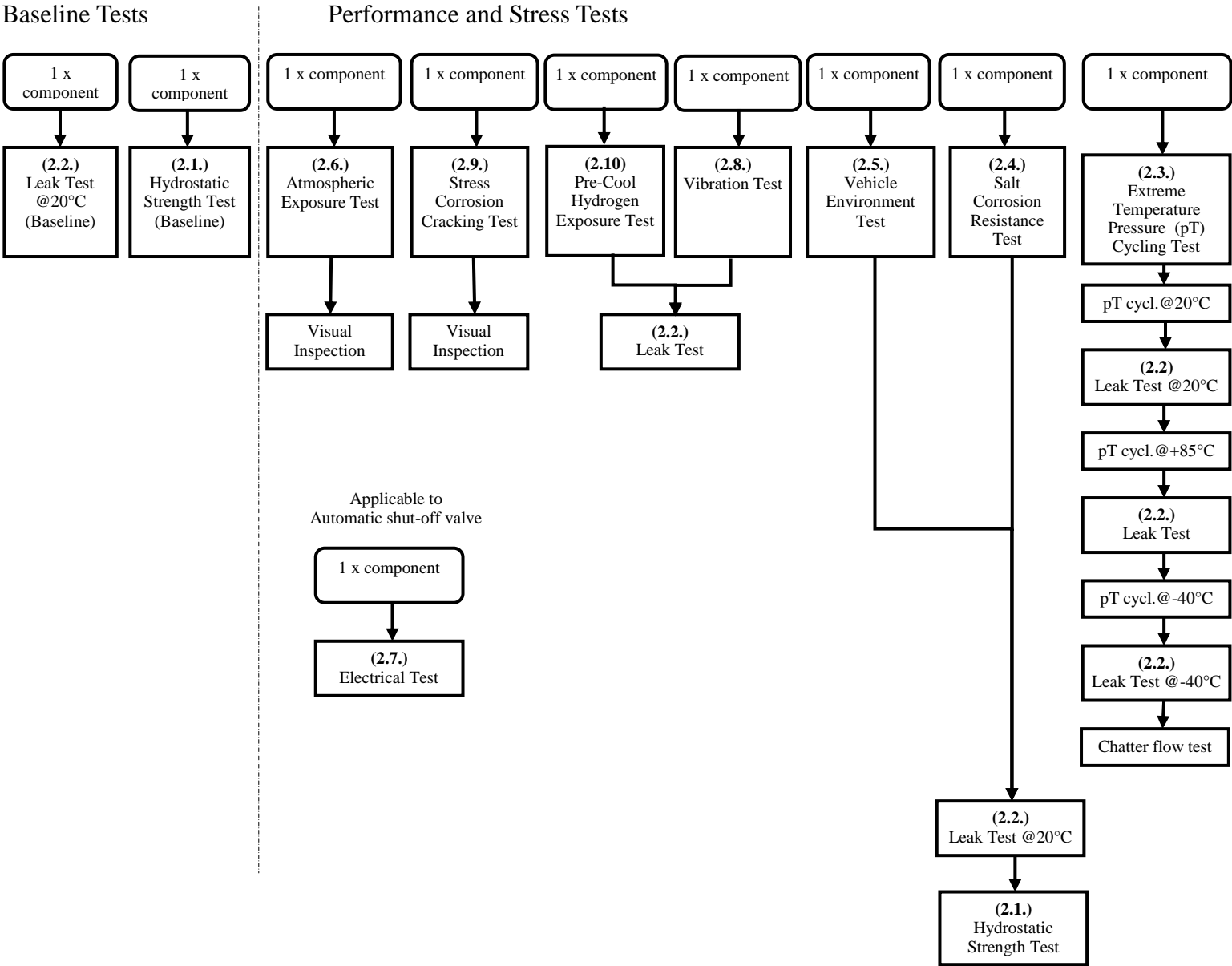
Baseline Tests



Performance and Stress Tests



Appendix 2 - Overview of check valve and automatic shut-off valve tests



Annex 5

Test procedures for a vehicle fuel system incorporating the compressed hydrogen storage system

1. Post-crash compressed hydrogen storage system leak test

The crash tests used to evaluate post-crash hydrogen leakage are those set out in paragraph 7.2. of this Regulation.

Prior to conducting the crash test, instrumentation is installed in the hydrogen storage system to perform the required pressure and temperature measurements if the standard vehicle does not already have instrumentation with the required accuracy.

The storage system is then purged, if necessary, following manufacturer's directions to remove impurities from the container before filling the storage system with compressed hydrogen or helium gas. Since the storage system pressure varies with temperature, the targeted fill pressure is a function of the temperature. The target pressure shall be determined from the following equation:

$$P_{\text{target}} = \text{NWP} \times (273 + T_o) / 288$$

where NWP is the Nominal Working Pressure (MPa), T_o is the ambient temperature to which the storage system is expected to settle, and P_{target} is the targeted fill pressure after the temperature settles.

The container is filled to a minimum of 95 per cent of the targeted fill pressure and allowed to settle (stabilize) prior to conducting the crash test.

The main stop valve and shut-off valves for hydrogen gas, located in the downstream hydrogen gas piping, are in normal driving condition immediately prior to the impact.

1.1. Post-crash leak test: compressed hydrogen storage system filled with compressed hydrogen

The hydrogen gas pressure, P_o (MPa) and temperature, T_o ($^{\circ}\text{C}$) are measured immediately before the impact and then at a time interval, Δt (min), after the impact. The time interval, Δt , starts when the vehicle comes to rest after the impact and continues for at least 60 minutes. The time interval, Δt , shall be increased, if necessary, to accommodate measurement accuracy for a storage system with a large volume operating up to 70MPa; in that case, Δt is calculated from the following equation:

$$\Delta t = V_{\text{CHSS}} \times \text{NWP} / 1,000 \times ((-0.027 \times \text{NWP} + 4) \times R_s - 0.21) - 1.7 \times R_s$$

where $R_s = P_s / \text{NWP}$, P_s is the pressure range of the pressure sensor (MPa), NWP is the Nominal Working Pressure (MPa), V_{CHSS} is the volume of the compressed hydrogen storage system (L), and Δt is the time interval (min). If the calculated value of Δt is less than 60 minutes, Δt is set to 60 minutes.

The initial mass of hydrogen in the storage system is calculated as follows:

$$P_o' = P_o \times 288 / (273 + T_o)$$

$$\rho_o' = -0.0027 \times (P_o')^2 + 0.75 \times P_o' + 0.5789$$

$$M_o = \rho_o' \times V_{CHSS}$$

The final mass of hydrogen in the storage system, M_f , at the end of the time interval, Δt , is calculated as follows:

$$P_f' = P_f \times 288 / (273 + T_f)$$

$$\rho_f' = -0.0027 \times (P_f')^2 + 0.75 \times P_f' + 0.5789$$

$$M_f = \rho_f' \times V_{CHSS}$$

where P_f is the measured final pressure (MPa) at the end of the time interval, and T_f is the measured final temperature (°C).

The average hydrogen flow rate over the time interval (that shall be less than the criteria in paragraph 7.2.1.) is therefore

$$V_{H_2} = (M_f - M_o) / \Delta t \times 22.41 / 2.016 \times (P_{target} / P_o)$$

where V_{H_2} is the average volumetric flow rate (NL/min) over the time interval and the term (P_{target} / P_o) is used to compensate for differences between the measured initial pressure, P_o , and the targeted fill pressure P_{target} .

1.2. Post-crash leak test: Compressed hydrogen storage system filled with compressed helium

The helium gas pressure, P_o (MPa), and temperature T_o (°C), are measured immediately before the impact and then at a predetermined time interval after the impact. The time interval, Δt , starts when the vehicle comes to rest after the impact and continues for at least 60 minutes. The time interval, Δt , shall be increased if necessary in order to accommodate measurement accuracy for a storage system with a large volume operating up to 70MPa; in that case, Δt is calculated from the following equation:

$$\Delta t = V_{CHSS} \times NWP / 1,000 \times ((-0.028 \times NWP + 5.5) \times R_s - 0.3) - 2.6 \times R_s$$

where $R_s = P_s / NWP$, P_s is the pressure range of the pressure sensor (MPa), NWP is the Nominal Working Pressure (MPa), V_{CHSS} is the volume of the compressed storage system (L), and Δt is the time interval (min). If the value of Δt is less than 60 minutes, Δt is set to 60 minutes.

The initial mass of ~~helium hydrogen~~ in the storage system is calculated as follows:

$$P_o' = P_o \times 288 / (273 + T_o)$$

$$\rho_o' = -0.0043 \times (P_o')^2 + 1.53 \times P_o' + 1.49$$

$$M_o = \rho_o' \times V_{CHSS}$$

The final mass of ~~helium hydrogen~~ in the storage system, M_f , at the end of the time interval, Δt , is calculated as follows:

$$P_f' = P_f \times 288 / (273 + T_f)$$

$$\rho_f' = -0.0043 \times (P_f')^2 + 1.53 \times P_f' + 1.49$$

$$M_f = \rho_f' \times V_{CHSS}$$

where P_f is the measured final pressure (MPa) at the end of the time interval, and T_f is the measured final temperature (°C).

The average helium flow rate over the time interval is therefore

$$V_{\text{He}} = (M_f - M_o) / \Delta t \times 22.41 / 4.003 \times (P_{\text{target}} / P_o)$$

where V_{He} is the average volumetric flow rate (NL/min) over the time interval and the term P_{target} / P_o is used to compensate for differences between the measured initial pressure (P_o) and the targeted fill pressure (P_{target}).

Conversion of the average volumetric flow of helium to the average hydrogen flow is calculated with the following expression:

$$V_{\text{H}_2} = V_{\text{He}} / 0.75$$

where V_{H_2} is the corresponding average volumetric flow of hydrogen (that shall be less than the requirements in paragraph 7.2.1. of this Regulation to comply with).

2. Post-crash concentration test for enclosed spaces

The measurements are recorded in the crash test that evaluates potential hydrogen (or helium) leakage (Annex 5, paragraph 1. test procedure).

Sensors are selected to measure either the build-up of the hydrogen or helium gas or the reduction in oxygen (due to displacement of air by leaking hydrogen/helium).

Sensors are calibrated to traceable references to ensure an accuracy of ± 5 per cent at the targeted criteria of 4 per cent hydrogen or 3 per cent helium by volume in air, and a full scale measurement capability of at least 25 per cent above the target criteria. The sensor shall be capable of a 90 per cent response to a full scale change in concentration within 10 seconds.

Prior to the crash impact, the sensors are located in the passenger and luggage compartments of the vehicle as follows:

- (a) At a distance within 250 mm of the headliner above the driver's seat or near the top centre the passenger compartment;
- (b) At a distance within 250 mm of the floor in front of the rear (or rear most) seat in the passenger compartment;
- (c) At a distance within 100 mm of the top of luggage compartments within the vehicle that are not directly affected by the particular crash impact to be conducted.

The sensors are securely mounted on the vehicle structure or seats and protected for the planned crash test from debris, air bag exhaust gas and projectiles. The measurements following the crash are recorded by instruments located within the vehicle or by remote transmission.

The vehicle may be located either outdoors in an area protected from the wind and possible solar effects or indoors in a space that is large enough or ventilated to prevent the build-up of hydrogen to more than 10 per cent of the targeted criteria in the passenger and luggage compartments.

Post-crash data collection in enclosed spaces commences when the vehicle comes to a rest. Data from the sensors are collected at least every 5 seconds and continue for a period of 60 minutes after the test. A first-order lag (time constant) up to a maximum of 5 seconds may be applied to the measurements to provide "smoothing" and filter the effects of spurious data points.

The filtered readings from each sensor shall be below the targeted criteria of 4.0 per cent for hydrogen or 3.0 per cent for helium at all times throughout the 60 minutes post-crash test period.

3. Compliance test for single failure conditions

Either test procedure of Annex 5, paragraph 3.1. or paragraph 3.2. shall be executed:
- 3.1. Test procedure for vehicle equipped with hydrogen gas leakage detectors
 - 3.1.1. Test condition
 - 3.1.1.1. Test vehicle: The propulsion system of the test vehicle is started, warmed up to its normal operating temperature, and left operating for the test duration. If the vehicle is not a fuel cell vehicle, it is warmed up and kept idling. If the test vehicle has a system to stop idling automatically, measures are taken so as to prevent the engine from stopping.
 - 3.1.1.2. Test gas: Two mixtures of air and hydrogen gas: 3.0 per cent concentration (or less) of hydrogen in the air to verify function of the warning, and 4.0 per cent concentration (or less) of hydrogen in the air to verify the shut-down function. The proper concentrations are selected based on the recommendation (or the detector specification) by the manufacturer.
 - 3.1.2. Test method
 - 3.1.2.1. Preparation for the test: The test is conducted without any influence of wind by appropriate means such as:
 - (a) A test gas induction hose is attached to the hydrogen gas leakage detector;
 - (b) The hydrogen leak detector is enclosed with a cover to make gas stay around hydrogen leak detector.
 - 3.1.2.2. Execution of the test
 - (a) Test gas is blown to the hydrogen gas leakage detector;
 - (b) Proper function of the warning system is confirmed when tested with the gas to verify function of the warning;
 - (c) The main shut-off valve is confirmed to be closed when tested with the gas to verify function of the shut-down. For example, the monitoring of the electric power to the shut-off valve or of the sound of the shut-off valve activation may be used to confirm the operation of the main shut-off valve of the hydrogen supply.
- 3.2. Test procedure for integrity of enclosed spaces and detection systems.
 - 3.2.1. Preparation:
 - 3.2.1.1. The test is conducted without any influence of wind.
 - 3.2.1.2. Special attention is paid to the test environment as during the test, flammable mixtures of hydrogen and air may occur.
 - 3.2.1.3. Prior to the test the vehicle is prepared to allow remotely controllable hydrogen releases from the hydrogen system. The number, location and flow capacity of the release points downstream of the main hydrogen shut-off

valve are defined by the vehicle manufacturer taking worst case leakage scenarios under single failure condition into account. As a minimum, the total flow of all remotely controlled releases shall be adequate to trigger demonstration of the automatic "warning" and hydrogen shut-off functions.

- 3.2.1.4. For the purpose of the test, a hydrogen concentration detector is installed where hydrogen gas may accumulate most in the passenger compartment (e.g. near the headliner) when testing for compliance with paragraph 7.1.4.2. of this Regulation and hydrogen concentration detectors are installed in enclosed or semi enclosed volumes on the vehicle where hydrogen can accumulate from the simulated hydrogen releases when testing for compliance with paragraph 7.1.4.3. of this Regulation (see Annex 5, paragraph 3.2.1.3.).
- 3.2.2. Procedure:
 - 3.2.2.1. Vehicle doors, windows and other covers are closed.
 - 3.2.2.2. The propulsion system is started, allowed to warm up to its normal operating temperature and left operating at idle for the test duration.
 - 3.2.2.3. A leak is simulated using the remote controllable function.
 - 3.2.2.4. The hydrogen concentration is measured continuously until the concentration does not rise for 3 minutes. When testing for compliance with paragraph 7.1.4.3 of this Regulation, the simulated leak is then increased using the remote controllable function until the main hydrogen shut-off valve is closed and the tell-tale warning signal is activated. The monitoring of the electric power to the shut-off valve or of the sound of the shut-off valve activation may be used to confirm the operation of the main shut-off valve of the hydrogen supply.
 - 3.2.2.5. When testing for compliance with paragraph 7.1.4.2. of this Regulation, the test is successfully completed if the hydrogen concentration in the passenger compartment does not exceed 1.0 per cent. When testing for compliance with paragraph 7.1.4.3. of this Regulation, the test is successfully completed if the tell-tale warning and shut-off function are executed at (or below) the levels specified in paragraph 7.1.4.3. of this Regulation; otherwise, the test is failed and the system is not qualified for vehicle service.
4. Compliance test for the vehicle exhaust system
 - 4.1. The power system of the test vehicle (e.g. fuel cell stack or engine) is warmed up to its normal operating temperature.
 - 4.2. The measuring device is warmed up before use to its normal operating temperature.
 - 4.3. The measuring section of the measuring device is placed on the centre line of the exhaust gas flow within 100 mm from the exhaust point of discharge external to the vehicle.
 - 4.4. The exhaust hydrogen concentration is continuously measured during the following steps:
 - (a) The power system is shut-down;
 - (b) Upon completion of the shut-down process, the power system is immediately started;

- (c) After a lapse of one minute, the power system is turned off and measurement continues until the power system shut-down procedure is completed.
- 4.5. The measurement device shall have a measurement response time of less than 300 milliseconds.
- 5. Compliance test for fuel line leakage
 - 5.1. The power system of the test vehicle (e.g. fuel cell stack or engine) is warmed up and operating at its normal operating temperature with the operating pressure applied to fuel lines.
 - 5.2. Hydrogen leakage is evaluated at accessible sections of the fuel lines from the high-pressure section to the fuel cell stack (or the engine), using a gas leak detector or a leak detecting liquid, such as soap solution.
 - 5.3. Hydrogen leak detection is performed primarily at joints
 - 5.4. When a gas leak detector is used, detection is performed by operating the leak detector for at least 10 seconds at locations as close to fuel lines as possible.
 - 5.5. When a leak detecting liquid is used, hydrogen gas leak detection is performed immediately after applying the liquid. In addition, visual checks are performed a few minutes after the application of liquid to check for bubbles caused by trace leaks.
- 6. Installation verification
 - The system is visually inspected for compliance.

Annex 6

Test procedures for LHSS design qualification

1. Verification tests for Baseline metrics

1.1. Proof pressure test

The inner container and the pipe work situated between the inner container and the outer jacket shall withstand an inner pressure test at room temperature according to the following requirements.

The test pressure p_{test} is defined by the manufacturer and shall fulfil the following requirements:

$$p_{\text{test}} \geq 1.3 (\text{MAWP} \pm 0.1 \text{ MPa})$$

- (a) For metallic containers, either p_{test} is equal to or greater than the maximum pressure of the inner container during fault management (as determined in Annex 6, paragraph 2.3.) or the manufacturer proves by calculation that at the maximum pressure of the inner container during fault management no yield occurs;
- (b) For non metallic containers, p_{test} is equal to or greater than the maximum pressure of the inner container during fault management (as determined in Annex 6, paragraph 2.3.).

The test is conducted according to the following procedure:

- (a) The test is conducted on the inner storage container and the interconnecting pipes between inner storage container and vacuum jacket before the outer jacket is mounted;
- (b) The test is either conducted hydraulically with water or a glycol/water mixture, or alternatively with gas. The container is pressurized to test pressure p_{test} at an even rate and kept at that pressure for at least 10 minutes;
- (c) The test is done at ambient temperature. In the case of using gas to pressurize the container, the pressurization is done in a way that the container temperature stays at or around ambient temperature.

The test is passed successfully if, during the first 10 minutes after applying the proof pressure, no visible permanent deformation, no visible degradation in the container pressure and no visible leakage are detectable.

1.2. Baseline initial burst pressure

The test is conducted according to the following procedure:

- (a) The test is conducted on the inner container at ambient temperature;
- (b) The test is conducted hydraulically with water or a water/glycol mixture;
- (c) The pressure is increased at a constant rate, not exceeding 0.5 MPa/min until burst or leakage of the container occurs;

~~(d) — When MAWP is reached there is a wait period of at least ten minutes at constant pressure, during which time the deformation of the container can be checked;~~

~~(e) — The pressure is recorded or written during the entire test.~~

~~For steel inner containers, the test is passed successfully if at least one of the two passing criteria described in paragraph 8.1.2. of this Regulation is fulfilled. For inner containers made out of an aluminium alloy or other material, a passing criterion shall be defined which guarantees at least the same level of safety compared to steel inner containers.~~

~~1.3. — Baseline pressure cycle life~~

~~Containers and/or vacuum jackets are pressure cycled with a number of cycles at least three times the number of possible full pressure cycles (from the lowest to highest operating pressure) for an expected on road performance. The number of pressure cycles is defined by the manufacturer under consideration of operating pressure range, size of the storage and, respectively, maximum number of refuellings and maximum number of pressure cycles under extreme usage and storage conditions. Pressure cycling is conducted between atmospheric pressure and MAWP at liquid nitrogen temperatures, e.g. by filling the container with liquid nitrogen to certain level and alternately pressurizing and depressurizing it with (pre cooled) gaseous nitrogen or helium.~~

~~2. — Verification for expected on road performance~~

~~2.1. — Boil off test~~

~~The test is conducted according to the following procedure:~~

~~(a) — For pre conditioning, the container is fuelled with liquid hydrogen to the specified maximum filling level. Hydrogen is subsequently extracted until it meets half filling level, and the system is allowed to completely cool down for at least 24 hours and a maximum of 48 hours;~~

~~(b) — The container is filled to the specified maximum filling level;~~

~~(c) — The container is pressurized until boil-off pressure is reached;~~

~~(d) — The test lasts for at least another 48 hours after boil-off started and is not terminated before the pressure stabilizes. Pressure stabilization has occurred when the average pressure does not increase over a two hour period.~~

~~The pressure of the inner container is recorded or written during the entire test. The test is passed successfully if the following requirements are fulfilled:~~

~~(a) — The pressure stabilizes and stays below MAWP during the whole test;~~

~~(b) — The pressure relief devices are not allowed to open during the whole test.~~

~~The pressure of the inner container shall be recorded or written during the entire test. The test is passed when the following requirements are fulfilled:~~

- ~~(a) The pressure shall stabilize and stay below MAWP during the whole test;~~
- ~~(b) The pressure relief devices are not allowed to open during the whole test.~~

~~2.2. Leak test~~

~~The test shall be conducted according to the procedure described in Annex 7, paragraph 2.~~

~~2.3. Vacuum loss test~~

~~The first part of the test is conducted according to the following procedure:~~

- ~~(a) The vacuum loss test is conducted with a completely cooled down container (according to the procedure in Annex 6, paragraph 2.1.);~~
- ~~(b) The container is filled with liquid hydrogen to the specified maximum filling level;~~
- ~~(c) The vacuum enclosure is flooded with air at an even rate to atmospheric pressure;~~
- ~~(d) The test is terminated when the first pressure relief device does not open any more.~~

~~The pressure of the inner container and the vacuum jacket is recorded or written during the entire test. The opening pressure of the first safety device is recorded or written. The first part of test is passed if the following requirements are fulfilled:~~

- ~~(a) The first pressure relief device opens below or at MAWP and limits the pressure to not more than 110 per cent of the MAWP;~~
- ~~(b) The first pressure relief device does not open at pressure above MAWP;~~
- ~~(c) The secondary pressure relief device does not open during the entire test.~~

~~After passing the first part, the test shall be repeated subsequently to re-generation of the vacuum and cool-down of the container as described above.~~

- ~~(a) The vacuum is re-generated to a value specified by the manufacturer. The vacuum shall be maintained at least 24 hours. The vacuum pump may stay connected until the time directly before the start of the vacuum loss;~~
- ~~(b) The second part of the vacuum loss test is conducted with a completely cooled down container (according to the procedure in Annex 6, paragraph 2.1.);~~
- ~~(c) The container is filled to the specified maximum filling level;~~
- ~~(d) The line downstream the first pressure relief device is blocked and the vacuum enclosure is flooded with air at an even rate to atmospheric pressure;~~
- ~~(e) The test is terminated when the second pressure relief device does not open any more.~~

~~The pressure of the inner container and the vacuum jacket is recorded or written during the entire test. For steel containers the second part of the test is passed if the secondary pressure relief device does not open below 110 per cent of the set pressure of the first pressure relief device and limits the pressure in the container to a maximum 136 per cent of the MAWP if a safety valve is used, or, 150 per cent of the MAWP if a burst disk is used as the secondary pressure relief device. For other container materials, an equivalent level of safety shall be demonstrated.~~

3. ~~Verification test for service terminating performance due to fire~~

~~The tested liquefied hydrogen storage system shall be representative of the design and the manufacturing of the type to be homologated. Its manufacturing shall be completely finished and it shall be mounted with all its equipment.~~

~~The first part of the test is conducted according to the following procedure:~~

- ~~(a) The bonfire test is conducted with a completely cooled down container (according to the procedure in Annex 6, paragraph 2.1.);~~
- ~~(b) The container contained during the previous 24 hours a volume of liquid hydrogen at least equal to half of the water volume of the inner container;~~
- ~~(c) The container is filled with liquid hydrogen so that the quantity of liquid hydrogen measured by the mass measurement system is half of the maximum allowed quantity that may be contained in the inner container;~~
- ~~(d) A fire burns 0.1 m underneath the container. The length and the width of the fire exceed the plan dimensions of the container by 0.1 m. The temperature of the fire is at least 590 °C. The fire shall continue to burn for the duration of the test;~~
- ~~(e) The pressure of the container at the beginning of the test is between 0 MPa and 0.01 MPa at the boiling point of hydrogen in the inner container;~~
- ~~(f) The test shall continue until the storage pressure decreases to or below the pressure at the beginning of the test, or alternatively in case the first PRD is a re-closing type, the test shall continue until the safety device has opened for a second time;~~
- ~~(g) The test conditions and the maximum pressure reached within the container during the test are recorded in a test certificate signed by the manufacturer and the technical service.~~

~~The test is passed if the following requirements are fulfilled:~~

- ~~(a) The secondary pressure relief device is not operated below 110 per cent of the set pressure of the primary pressure relief device;~~
- ~~(b) The container shall not burst and the pressure inside the inner container shall not exceed the permissible fault range of the inner container.~~

~~The permissible fault range for steel containers is as follows:~~

- (a) — ~~If a safety valve is used as secondary pressure relief device, the pressure inside the container does not exceed 136 per cent of the MAWP of the inner container;~~
- (b) — ~~If a burst disk is used outside the vacuum area as secondary pressure relief device, the pressure inside the container is limited to 150 per cent of the MAWP of the inner container;~~
- (c) — ~~If a burst disk is used inside the vacuum area as secondary pressure relief device, the pressure inside the container is limited to 150 per cent of the MAWP \pm 0.1 MPa of the inner container.~~

~~For other materials, an equivalent level of safety shall be demonstrated.~~

Annex 7

Test procedures for specific component for LHSS

~~The test procedures for pressure relief devices (paragraph 9.4.1. of this Regulation) and shut off valves (paragraph 9.4.2. of this Regulation) are described below:~~

~~Testing shall be performed with hydrogen gas having gas quality compliant with ISO 14687 2/SAE J2719. All tests shall be performed at ambient temperature 20(±5)°C unless otherwise specified.~~

1. ~~Pressure test~~

~~A hydrogen containing component shall withstand without any visible evidence of leak or deformation a test pressure of 150 per cent MAWP with the outlets of the high pressure part plugged. The pressure shall subsequently be increased from 150 per cent to 300 per cent MAWP. The component shall not show any visible evidence of rupture or cracks.~~

~~The pressure supply system shall be equipped with a positive shut off valve and a pressure gauge having a pressure range of not less than 150 per cent and no more than 200 per cent of the test pressure; the accuracy of the gauge shall be 1 per cent of the pressure range.~~

~~For components requiring a leakage test, this test shall be performed prior to the pressure test.~~

2. ~~External leakage test~~

~~A component shall be free from leakage through stem or body seals or other joints, and shall not show evidence of porosity in casting when tested as described in Annex 7, paragraph 3.3. at any gas pressure between zero and its MAWP.~~

~~The test shall be performed on the same equipment at the following conditions:~~

- ~~(a) At ambient temperature;~~
- ~~(b) At the minimum operating temperature or at liquid nitrogen temperature after sufficient conditioning time at this temperature to ensure thermal stability;~~
- ~~(c) At the maximum operating temperature after sufficient conditioning time at this temperature to ensure thermal stability.~~

~~During this test, the equipment under test shall be connected to a source of gas pressure. A positive shut off valve and a pressure gauge having a pressure range of not less than 150 per cent and not more than 200 per cent of the test pressure shall be installed in the pressure supply piping; the accuracy of the gauge shall be 1 per cent of the pressure range. The pressure gauge shall be installed between the positive shut off valve and the sample under test.~~

Throughout the test, the sample shall be tested for leakage, with a surface active agent without formation of bubbles or measured with a leakage rate less than 216 Nml/hr.

3. ~~Endurance test~~

3.1. ~~A component shall be capable of conforming to the applicable leakage test requirements of Annex 7, paragraphs 2. and 9., after being subjected to 20,000 operation cycles.~~

3.2. ~~The appropriate tests for external leakage and seat leakage, as described in Annex 7, paragraphs 2. and 9. shall be carried out immediately following the endurance test.~~

3.3. ~~The shut off valve shall be securely connected to a pressurized source of dry air or nitrogen and subjected to 20,000 operation cycles. A cycle shall consist of one opening and one closing of the component within a period of not less than 10 ± 2 seconds.~~

3.4. ~~The component shall be operated through 96 per cent of the number of specified cycles at ambient temperature and at the MAWP of the component. During the off cycle the downstream pressure of the test fixture shall be allowed to decay to 50 per cent of the MAWP of the component.~~

3.5. ~~The component shall be operated through 2 per cent of the total cycles at the maximum material temperature ($-40\text{ }^{\circ}\text{C}$ to $+85\text{ }^{\circ}\text{C}$) after sufficient conditioning time at this temperature to ensure thermal stability and at MAWP. The component shall comply with Annex 7, paragraphs 2. and 9. at the appropriate maximum material temperature ($-40\text{ }^{\circ}\text{C}$ to $+85\text{ }^{\circ}\text{C}$) at the completion of the high temperature cycles.~~

3.6. ~~The component shall be operated through 2 per cent of the total cycles at the minimum material temperature ($-40\text{ }^{\circ}\text{C}$ to $+85\text{ }^{\circ}\text{C}$) but not less than the temperature of liquid nitrogen after sufficient conditioning time at this temperature to ensure thermal stability and at the MAWP of the component. The component shall comply with Annex 7, paragraphs 2. and 9. at the appropriate minimum material temperature ($-40\text{ }^{\circ}\text{C}$ to $+85\text{ }^{\circ}\text{C}$) at the completion of the low temperature cycles.~~

4. ~~Operational test~~

~~The operational test shall be carried out in accordance with EN 13648 1 or EN 13648 2. The specific requirements of the standard are applicable.~~

5. ~~Corrosion resistance test~~

~~Metallic hydrogen components shall comply with the leakage tests referred to in Annex 7, paragraphs 2. and 9. after being submitted to 144 hours salt spray test according to ISO 9227 with all connections closed.~~

~~A copper or brass hydrogen containing component shall comply with the leakage tests referred to in Annex 7, paragraphs 2. and 9. and after being submitted to 24 hours immersion in ammonia according to ISO 6957 with all connections closed.~~

6. ~~Resistance to dry heat test~~

~~The test shall be carried out in compliance with ISO 188. The test piece shall be exposed to air at a temperature equal to the maximum operating~~

~~temperature for 168 hours. The change in tensile strength shall not exceed ± 25 per cent. The change in ultimate elongation shall not exceed the following values:~~

~~————— maximum increase 10 per cent;~~

~~————— maximum decrease 30 per cent.~~

~~7. ———— Ozone ageing Test~~

~~————— The test shall be in compliance with ISO 1431-1. The test piece, which shall be stressed to 20 per cent elongation, shall be exposed to air at +40 °C with an ozone concentration of 50 parts per hundred million during 120 hours.~~

~~————— No cracking of the test piece is allowed.~~

~~8. ———— Temperature cycle test~~

~~————— A non-metallic part containing hydrogen shall comply with the leakage tests referred to in Annex 7, paragraphs 2. and 9. after having been submitted to a 96 hours temperature cycle from the minimum operating temperature up to the maximum operating temperature with a cycle time of 120 minutes, under MAWP.~~

~~9. ———— Flex line cycle test~~

~~————— Any flexible fuel line shall be capable of conforming to the applicable leakage test requirements referred to in Annex 7, paragraph 2., after being subjected to 6,000 pressure cycles.~~

~~————— The pressure shall change from atmospheric pressure to the MAWP of the container within less than five seconds, and after a time of at least five seconds, shall decrease to atmospheric pressure within less than five seconds.~~

~~————— The appropriate test for external leakage, as referred to in Annex 7, paragraph 2., shall be carried out immediately following the endurance test.~~

Annex 8

Test procedures for a vehicle fuel system incorporating LHSS

1. ~~Post crash leak test for the liquefied hydrogen storage systems~~

~~Prior to the vehicle crash test, the following steps are taken to prepare the liquefied hydrogen storage system (LHSS):~~

- ~~(a) — If the vehicle does not already have the following capabilities as part of the standard vehicle, and tests in Annex 5, paragraph 1, are to be performed; the following shall be installed before the test:
 - ~~(i) — LHSS pressure sensor: The pressure sensor shall have a full scale of reading of at least 150 per cent of MAWP, an accuracy of at least 1 per cent of full scale, and capable of reading values of at least 10 kPa;~~
 - ~~(ii) — LHSS temperature sensor: The temperature sensor shall be capable of measuring cryogenic temperatures expected before crash. The sensor is located on an outlet, as near as possible to the container;~~
 - ~~(iii) — Fill and drain ports: The ability to add and remove both liquefied and gaseous contents of the LHSS before and after the crash test shall be provided.~~~~
- ~~(b) — The LHSS is purged with at least 5 volumes of nitrogen gas;~~
- ~~(c) — The LHSS is filled with nitrogen to the equivalence of the maximum fill level of hydrogen by weight;~~
- ~~(d) — After fill, the (nitrogen) gas vent is to be closed, and the container allowed to equilibrate;~~
- ~~(e) — The leak tightness of the LHSS is confirmed.~~

~~After the LHSS pressure and temperature sensors indicate that the system has cooled and equilibrated, the vehicle shall be crashed per state or regional regulation. Following the crash, there shall be no visible leak of cold nitrogen gas or liquid for a period of at least 1 hour after the crash. Additionally, the operability of the pressure controls or PRDs shall be proven to ensure that the LHSS is protected against burst after the crash. If the LHSS vacuum has not been compromised by the crash, nitrogen gas may be added to the LHSS via the fill / drain port until pressure controls and/or PRDs are activated. In the case of re-closing pressure controls or PRDs, activation and re-closing for at least 2 cycles shall be demonstrated. Exhaust from the venting of the pressure controls or the PRDs shall not be vented to the passenger or luggage compartments during these post crash tests.~~

~~Following confirmation that the pressure control and/or safety relief valves are still functional, a leak test shall be conducted on the LHSS using the procedures in either Annex 5, paragraphs 1.1. or 1.2.~~

~~Either test procedure Annex 8, paragraph 1.1. or the alternative test procedure Annex 8, paragraph 1.2. (consisting of Annex 8, paragraphs 1.2.1. and 1.2.2.) may be chosen at the discretion of the manufacturer.~~

~~1.1. Post crash leak test for the liquefied hydrogen storage systems (LHSSs)~~

~~The following test would replace both the leak test in Annex 8, paragraph 1.2.1. and gas concentration measurements as defined in Annex 8, paragraph 1.2.2. Following confirmation that the pressure control and/or safety relief valves are still functional; the leak tightness of the LHSS may be proven by detecting all possible leaking parts with a sniff sensor of a calibrated Helium leak test device used in sniff modus. The test can be performed as an alternative if the following pre conditions are fulfilled:~~

- ~~(a) No possible leaking part shall be below the liquid nitrogen level on the storage container;~~
- ~~(b) All possible leaking parts are pressurized with helium gas when the LHSS is pressurized;~~
- ~~(c) Required covers and/or body panels and parts can be removed to gain access to all potential leak sites.~~

~~Prior to the test the manufacturer shall provide a list of all possible leaking parts of the LHSS. Possible leaking parts are:~~

- ~~(a) Any connectors between pipes and between pipes and the container;~~
- ~~(b) Any welding of pipes and components downstream the container;~~
- ~~(c) Valves;~~
- ~~(d) Flexible lines;~~
- ~~(e) Sensors.~~

~~Prior to the leak test overpressure in the LHSS should be released to atmospheric pressure and afterwards the LHSS should be pressurized with helium to at least the operating pressure but well below the normal pressure control setting (so the pressure regulators do not activate during the test period). The test is passed if the total leakage amount (i.e. the sum of all detected leakage points) is less than 216 Nml/hr.~~

~~1.2. Alternative post-crash tests for the liquefied hydrogen storage systems~~

~~Both tests of Annex 8, paragraphs 1.2.1. and 1.2.2. are conducted under the test procedure of Annex 8, paragraph 1.2.~~

~~1.2.1. Alternative post-crash leak test~~

~~Following confirmation that the pressure control and/or safety relief valves are still functional, the following test may be conducted to measure the post-crash leakage. The concentration test in Annex 5, paragraph 1.1 shall be conducted in parallel for the 60 minute test period if the hydrogen concentration has not already been directly measured following the vehicle crash.~~

~~The container shall be vented to atmospheric pressure and the liquefied contents of the container shall be removed and the container shall be heated up to ambient temperature. The heat up could be done, e.g. by purging the container sufficient times with warm nitrogen or increasing the vacuum pressure.~~

~~If the pressure control set point is less than 90 per cent of the MAWP, the pressure control shall be disabled so that it does not activate and vent gas during the leak test.~~

~~The container shall then be purged with helium by either:~~

~~(a) — Flowing at least 5 volumes through the container;~~

~~or~~

~~(b) — Pressurizing and de-pressurizing the container the LHSS at least 5 times.~~

~~The LHSS shall then be filled with helium to 80 per cent of the MAWP of the container or to within 10 per cent of the primary relief valve setting, whichever results in the lower pressure, and held for a period of 60 minutes. The measured pressure loss over the 60 minute test period shall be less than or equal to the following criterion based on the liquid capacity of the LHSS:~~

~~(a) — 2 atm allowable loss for 100L systems or less;~~

~~(b) — 1 atm allowable loss for systems greater than 100L and less than or equal to 200L; and~~

~~(c) — 0.5 atm allowable for systems greater than 200L.~~

~~1.2.2. — Post crash enclosed spaces test~~

~~The measurements shall be recorded in the crash test that evaluates potential liquid hydrogen leakage in test procedure Annex 8, paragraph 1.2.1. if the LHSS contains hydrogen for the crash test or during the helium leak test in test procedure Annex 8, paragraph 2.~~

~~Select sensors to measure the build up of hydrogen or helium (depending which gas is contained within the LHSSs for the crash test. Sensors may measure either measure the hydrogen/helium content of the atmosphere within the compartments or measure the reduction in oxygen (due to displacement of air by leaking hydrogen/helium).~~

~~The sensors shall be calibrated to traceable references, have an accuracy of 5 per cent of reading at the targeted criteria of 4 per cent hydrogen (for a test with liquefied hydrogen) or 0.8 per cent helium by volume in the air (for a test at room temperature with helium), and a full scale measurement capability of at least 25 per cent above the target criteria. The sensor shall be capable of a 90 per cent response to a full scale change in concentration within 10 seconds.~~

~~The installation in vehicles with LHSSs shall meet the same requirements as for vehicles with compressed hydrogen storage systems in Annex 5, paragraph 2. Data from the sensors shall be collected at least every 5 seconds and continue for a period of 60 minutes after the vehicle comes to a rest if post crash hydrogen is being measured or after the initiation of the helium leak test if helium build up is being measured. Up to a 5 second rolling average may be applied to the measurements to provide "smoothing" and filter effects of spurious data points. The rolling average of each sensor shall be below the targeted criteria of 4 per cent hydrogen (for a test with liquefied hydrogen) or 0.8 per cent helium by volume in the air (for a test at room temperature with helium) at all times throughout the 60 minute post crash test period.~~
