



**An
Phríomh-Oifig
Staidrimh**

Central
Statistics
Office

Providing Insight on Applicants of International Protection Using Administrative Data

Cathal Doherty, Life Events and Demography, Central Statistics Office, Ireland

UNECE Workshop on the International Recommendations on Statistics on Refugees, Internally Displaced Persons, and Statelessness

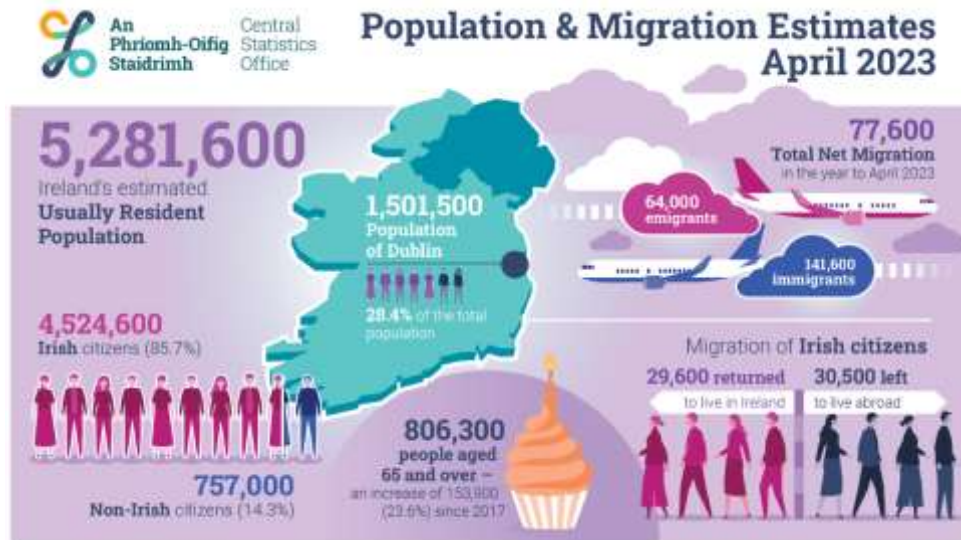
06/05/2024

Cathal Doherty, Statistician Life Events and Demography



Two main responsibilities

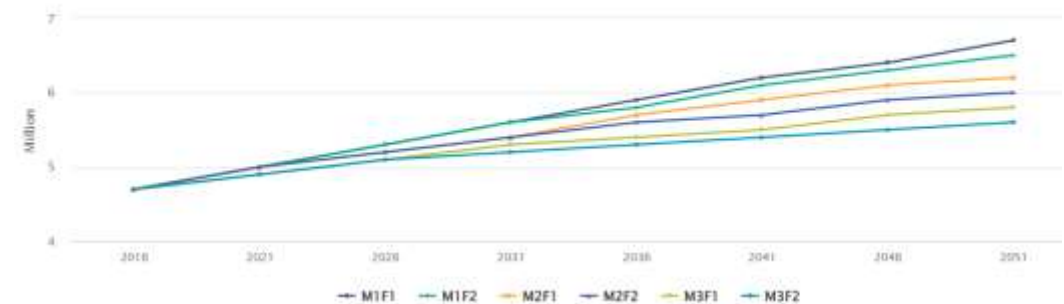
Population Estimates



Source: [Population and Migration Estimates, April 2023 - CSO - Central Statistics Office](#)

Population Projections

Figure 2.1 Population projections by selected assumptions, 2016 - 2051



Source: [Population and Labour Force Projections 2017 - 2051 - CSO - Central Statistics Office](#)



How is the population estimated?



Each Quarter



Add

1. Births
2. Immigrants

Admin data

Survey data

Subtract

1. Deaths
2. Emigrants

UR Population of
5.2 million



eurostat

- Annual
- T + 12M

- Sex
- SYOA (age)
- NUTS 3
- COB (country birth)
- COC (country citizenship)



Our journey with administrative data

Experimental Population Estimates

Irish Population Estimates from Administrative Data Sources, 2021

CSO Frontier Series Research Paper

CSO research publication, 11 July 2023, 11am

Frontier Series Output

CSO Frontier Series outputs may use new methods which are under development and/or data sources which may be incomplete, for example new administrative data sources. Particular care must be taken when interpreting the statistics in this release.

[Learn more about CSO Frontier Series outputs.](#)

Source: [Irish Population Estimates from Administrative Data Sources, 2021 - Central Statistics Office](#)

Signs-of-life for Beneficiaries of Temporary Protection

- Signs of life approach being implemented using social welfare and tax datasets.
- Very useful introduction to the methodology.



Our journey with administrative data

Incoming European regulatory demands mean that the CSO will need to use administrative data as a primary source for population estimates and migration flows

Advantages

1. The PPSN → Personal Public Service Number is the Irish social security number and is used across all public services.
2. Access to public administrative data for statistical purposes under to the [Statistics Act, 1993](#).
3. Excellent co-operation between ministries and NSI. CSO in a unique position to provide data and insight for all.

Disadvantages

1. No administrative population registers of people or households.
2. No centralised register on migration or widely used flags on existing systems.
3. As with all countries, lack of important attribute data on administrative systems.
4. Timeliness!



Administrative Data Sources in Ireland

#	Name	Owner	Used since / planned from	Geographical coverage	Geographical detail	Update frequency	Update delay
1.1	Central Records System (CRS)	Department of Social Protection (DSP)	2022 for coherence / no date for planned production	National	National (no address detail)	Monthly	3 months
1.2	DSP Payments	Department of Social Protection (DSP)	2022 for coherence / no date for planned production	NUTS3	National (no address detail)	Monthly	1 month
1.3	PAYE Modernisation (PMOD)	The Revenue Commissioners	2022 for coherence / no date for planned production	NUTS3	NUTS3 (no address detail)	Monthly	1 month
1.4	General Register Office (GRO)	Department of Social Protection (DSP)	2010	NUTS4	NUTS4 (no address detail)	Quarterly	3 months
1.5	Child Benefit (CB)	Department of Social Protection (DSP)	2022 for coherence / no date for planned production	NUTS3	NUTS3 (no address detail)	Monthly	1 month
1.6	Primary (Post-Primary) Pupils Database	Department of Education	2022 for coherence / no date for planned production	NUTS3	NUTS3 (no address detail)	Annually	12 months
1.7	Higher Education Authority (HEA)	Department of Higher and Further Education, Research, Innovation and Science	2022 for coherence / no date for planned production	NUTS3	NUTS3 (no address detail)	Annually	12 months
1.8	Further Education and Training Awards Council (FETAC)	Department of Higher and Further Education, Research, Innovation and Science	2022 for coherence / no date for planned production	NUTS3	NUTS3 (no address detail)	Annually	12 months
1.9	Student Universal Support Ireland (SUSI)	Department of Higher and Further Education, Research, Innovation and Science	2022 for coherence / no date for planned production	NUTS3	NUTS3 (no address detail)	Annually	12 months
1.10	Form 11 Income Tax returns (IT Form 11)	The Revenue Commissioners	2022 for coherence / no date for planned production	NUTS3	NUTS3 (no address detail)	Annually	> 12 months

CRS – File that contains all personal public service numbers (PPSN) in Ireland

DSP – monthly file, social welfare payments

PMOD – monthly file, payslip submissions of people in employment

An Roinn Coimisce Sóisialaí
Department of Social Protection



International Protection in Ireland



**An Oifig um Chosaint
Idirnáisiúnta**
International Protection
Office



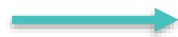
International Protection Office (IPO) manage IP applications



Those who successfully apply are entitled to state provided accommodation



**An Roinn Leanaí, Comhionannais,
Míchumais, Lánpháirtíochta agus Óige**
Department of Children, Equality,
Disability, Integration and Youth



Accommodation is managed by the International Protection Accommodation Service (IPAS)

Existing statistics

1. IPAS publish weekly accommodation statistics
2. IPO publish monthly application statistics

New statistics

CSO has created a novel methodology that can assess the labour market activity of IP applicants



Daily Expense Allowance



What is Daily Expenses Allowance (DEA)?

If you have applied for International Protection, live in or are on a waiting list to move into accommodation provided by the International Protection Accommodation Services (IPAS) of the Department of Children, Equality, Disability, Integration and Youth while awaiting the decision on your application, you are entitled to receive the Daily Expenses Allowance.

Source: <https://www.gov.ie/en/service/ba5ad9-daily-expenses-allowance/>

	2016 - 2017	2018	2019 onwards
Per Adult	€19.10	€21.60	€38.80
Per Child	€15.60	€21.60	€29.80

- Social welfare benefit in Ireland that only those who apply to stay in IPAS accommodation can receive.
- The CSOs Administrative Data Centre replaces the PPSN with a pseudonymised PIK across all datasets.
- Lawful processing of administrative data for statistical purposes is prioritised.
- Starting point for the methodology presented here is the DEA – PIKs for the beneficiaries can be isolated and assessed over time.



Description of the methodology

2016	Filter	PMOD Year to Date					
		2019	2020	2021	2022	2023	
DSP_Month1	▼ "DEA"	} CSOPPSN →	Y/N	Y/N	Y/N	Y/N	Y/N
DSP_Month2	▼ "DEA"						
DSP_Month3	▼ "DEA"						
DSP_Month4	▼ "DEA"						
⋮							
DSP_Month12	▼ "DEA"						

Using 2016 as an example

- Monthly DSP datasets are filtered for DEA activity.
- PIKs (CSOPPSN) are stored and linked across other administrative data sources.
- PMOD is a monthly revenue administrative source for employment.
- Labour market activity (e.g. PMOD activity) each year can be flagged.



Description of the methodology

CSOPPSN	IP_Start_YR	SEX	AGE	NCODE	PMOD16	NACE16	PAY16	PMOD23	NACE23	PAY23
ID1	2016	1	23	NAT_1	N	Y	F	22,000
ID2	2016	1	24	NAT_2	N	.	.
ID3	2017	2	43	NAT_3	Y	J	36,000
ID4	2018	2	34	NAT_3	Y	Q	16,000
:	:	:	:	:	:	:	:	:	:	:
:	:	:	:	:	:	:	:	:	:	:
:	:	:	:	:	:	:	:	:	:	:
IdXXXXX	2020	1	47	NAT_23	Y	Q	5,000

- Method expanded up to 2023 – 96 datasets in total.
 - PIKs (CSOPPSN) are also matched to a “relationships” dataset to obtain PIKs for all beneficiaries of the DEA (including dependent children and partners).
 - Dataset of those who apply for International Protection and avail of state accommodation has been created.
1. One row per unique PIK
 2. Year IP administrative activity started
 3. Sex, age and nationality collected
 4. Employment activity is determined (PMOD16, PMOD17....PMOD23)
 5. Associated employment activity variables are collected (NACE breakdown, Gross pay).



Results – Expected and Future

Publication Plan

- The CSO plan to publish initial results in the Summer of 2024.
- Results based on IP applicants from 2016 to 2023 and their employment activity from 2019 to 2023.

Future Results – Annual series

1. Analysis of other social welfare benefits, also using both social welfare / employment activity to determine signs of administrative activity.
2. Assess the level of employment activity, e.g. mean/median gross pay, sector of employment
3. Link to the 2022 Census of Population file for cross-sectional point in time information.
4. Analysis of existing and future relations.

Results are ready

1. Age, sex and nationality over time.
2. Employment activity from 2019 to 2023 for IP applicants from 2016 to 2023.
3. Employment activity for men and women.
4. Employment activity across age.



Expect Results in the Summer!

Contact Details: cathal.doherty@csso.ie

