

Pan-European Cycling Master plan From Promotion to Implementation

George Georgiadis

Sustainable Transport Division, UNECE

*Working Party on Transport Trends and Economics
Twenty-ninth session, Geneva, 5–7 September 2016*



• Paris Declaration

We, the ministers and representatives of member States of the United Nations Economic Commission for Europe (UNECE) and the World Health Organization (WHO) in the WHO European Region, (...)

10. *Decide* to initiate the development of a pan-European Master Plan for Cycling Promotion, supported by guidelines and tools to assist in the development of cycling promotion policies at the national level. This new initiative will be undertaken within the framework of THE PEP partnerships;

4th High-level Meeting Transport, Health and Environment

14-16 april 2014 - Paris-La Défense



Luxembourg Declaration



LE GOUVERNEMENT
DU GRAND-DUCHÉ DE LUXEMBOURG
Ministère du Développement durable
et des Infrastructures

Informal meeting of EU ministers for Transport
Luxembourg, October 7th, 2015

Declaration on Cycling as a climate friendly Transport Mode

Preamble

Innovation

Cycling is a European success story¹. Bicycle innovation will boost jobs and growth and support EU industry through new technology and services².

Environment

In and around Europe's many growing urban centres, cycling is an essential tool for congestion relief.³ Both for the state and for citizens, cycling is the most cost effective transport mode after walking, as it produces massive positive externalities for society at little expenditure in terms of infrastructure and vehicles. When production, maintenance, operation and fuel are taken into account, cycling is the most greenhouse gas efficient transport mode of all. Considering that half of all passenger car trips made in most European cities are shorter than five kilometres and that more than half of all motorized cargo trips in EU cities could be shifted to bicycles⁴, there is significant potential to increase cycling's mode share and to improve quality of life.



4, place de l'Europe
L-1499 Luxembourg

Tel. (+352) 247 83301
Fax (+352) 22 33 60

info@md4.public.lu
www.md4.public.lu

www.gouvernement.lu
www.luxembourg.lu



LE GOUVERNEMENT
DU GRAND-DUCHÉ DE LUXEMBOURG
Ministère du Développement durable
et des Infrastructures

Action plan

Taking into account (1) the call of the European Parliament for 'an EU roadmap for cycling to be included in the Commission Work Programme'¹ and (2) the 2014 Paris Declaration² of the Transport, Health and Environment Pan-European Programme (THE PEP) to develop 'a pan-European Master Plan for cycling promotion',

Ministers and State Secretaries call upon the Commission to consider, in full respect of the principle of subsidiarity, the following actions:

1. Integrate cycling into multimodal transport policy, including smart mobility, stressing the need to promote physical infrastructure and behavioural change programs.
2. Develop an EU level strategic document on cycling. This strategic document should (1) list all the goals within EU competence that would benefit from an increase in cycling's mode share, (2) identify EU policy and funding instruments that are already mobilized or that should be mobilized to increase cycling's mode share and to foster cycling related employment in the EU, and (3) include cycling in the above EU policies and funding instruments.
3. Set up a European focal point for cycling³ (1) to serve as a one-stop-shop for cycling related questions, (2) to facilitate the exchange of best practices among Member States⁴, notably on cyclists' road safety, and (3) to monitor the implementation and the impact of the EU strategy for cycling.

Ministers and State Secretaries recognize that Member States can contribute to increasing cycling's mode share by:

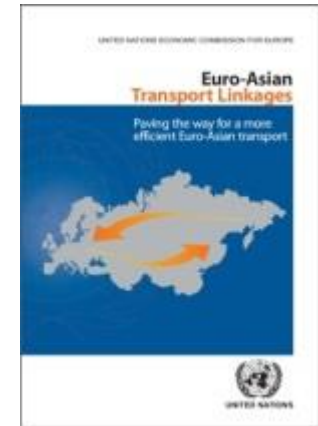
4. Designating a national focal point for cycling to gather and disseminate best practices within the Member State and to cooperate with the European focal point for cycling as well as with existing forums, such as the United Nations' Transport, Health and Environment Pan-European Programme.
5. Ensuring that national transport infrastructure projects consider and aim to strengthen international, national, regional and local cycling networks⁵.



THE PEP Partnership on Cycling



Why ITC/WP.5? Our Experience



THE PEP Cycling Masterplan Infrastructure module

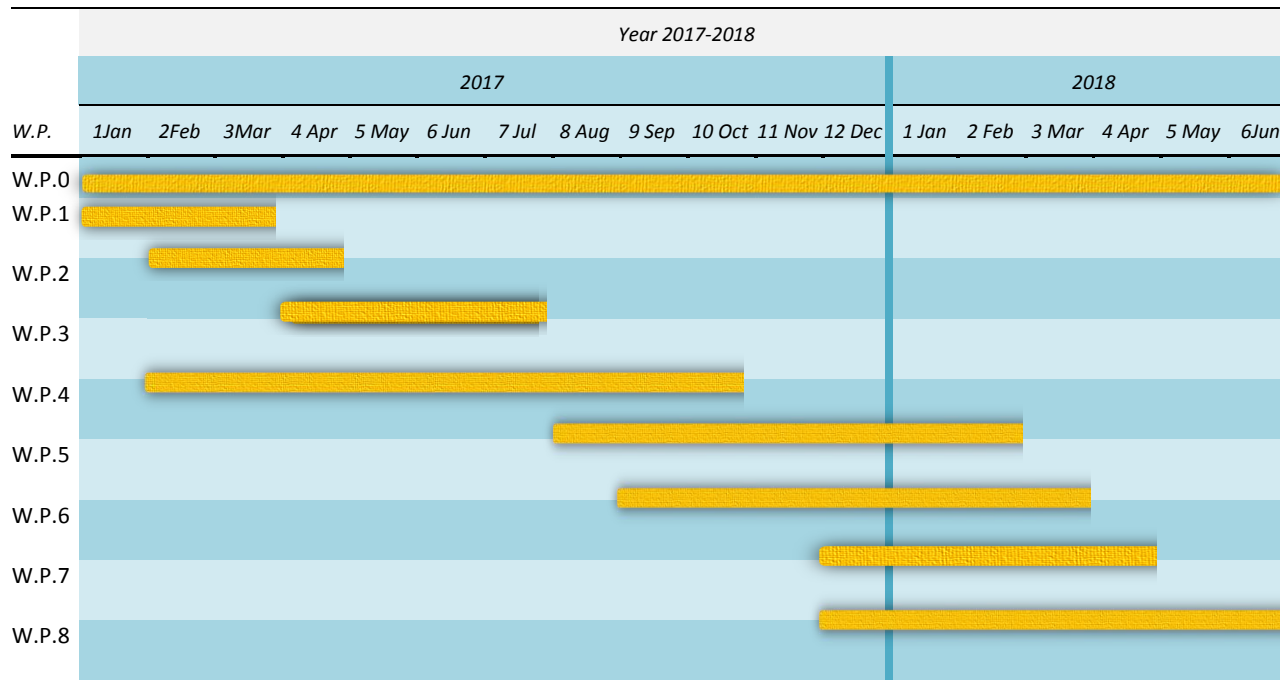
- Work packages

0. Project Management
1. Review of related work
2. Methodology and main assumptions
3. Cycling lanes status and needs in the UNECE member Countries/Cities
4. Elaboration of Environmental – Health benefits analysis by using existing tools (HEAT – ForFITS)
5. Elaboration of pan-European master plan for cycling at International level
6. Elaboration of pan-European master plan for cycling at Cities level
7. Addressing funding questions
8. Conclusions recommendations – Public awareness actions and dissemination of results



THE PEP Cycling Masterplan Infrastructure module

- Proposed Work Time Plan



For Conclusion: Save the date!



INLAND
TRANSPORT
COMMITTEE
70th Anniversary

SAVE THE DATE

21-24 February 2017

In conjunction with the
Global Road Safety Film Festival of 2017

