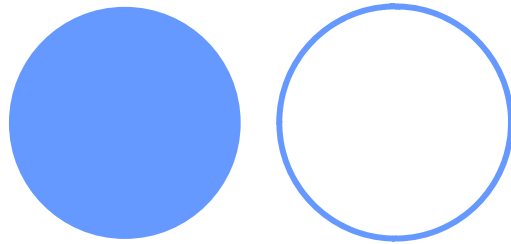


ASSTRA

the Italian Association of LPT Companies

Avv. Guido del Mese – General Manager ASSTRA

*UNECE workshop: Urban Transport & Mobility – Geneva, Palais de Nations,
03 September 2012*



WHO WE ARE

ASSTRA represents a network of more than 200 companies running urban, suburban and extra urban public transport services on:

- buses,
- tramway,
- trolleybuses,
- metropolitan railway,
- light rail (Except those operated by Trenitalia S.p.A.),
- waterborne transport,
- tourist and school services,
- parking areas,
- towing away of vehicles.

WHAT IT DOES

Acts to create awareness between policy-makers and public opinion on the social, economical and environmental role of local public transport, according to the principles of sustainable development.

Offers its members a wide spectrum of services such as legal, economic-financial and fiscal consulting on insurance, railways and technological progress and relations with trade unions.



Represents the interest of its members at public authorities, policy-makers, trade unions, economical, political and social organizations, acting at national, european and international level

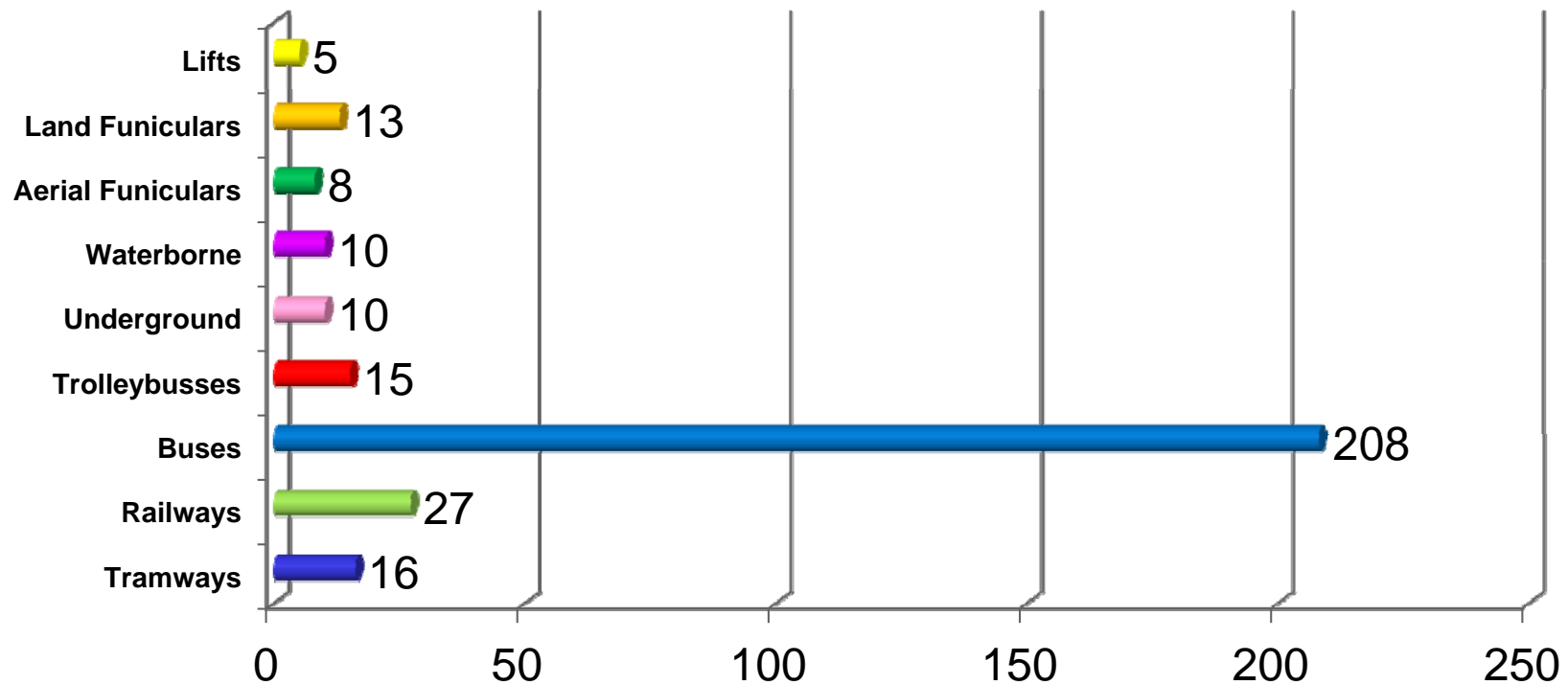
ASSTRA: OUR MAIN FIGURES

Member Companies	196
Market share of urban transport	95%
Market share extra urban transport	75%
Local Public Transport Fleet	37.983
Rolling stock (local railways)	1.137 trains
Lenght of the network	210.000 km
Kilometers covered	1,6 billions
Number of employees	102.000
Served Municipalities	5.000
Passengers per year	5,2 billions
Annual Turnover	9,2 billions €

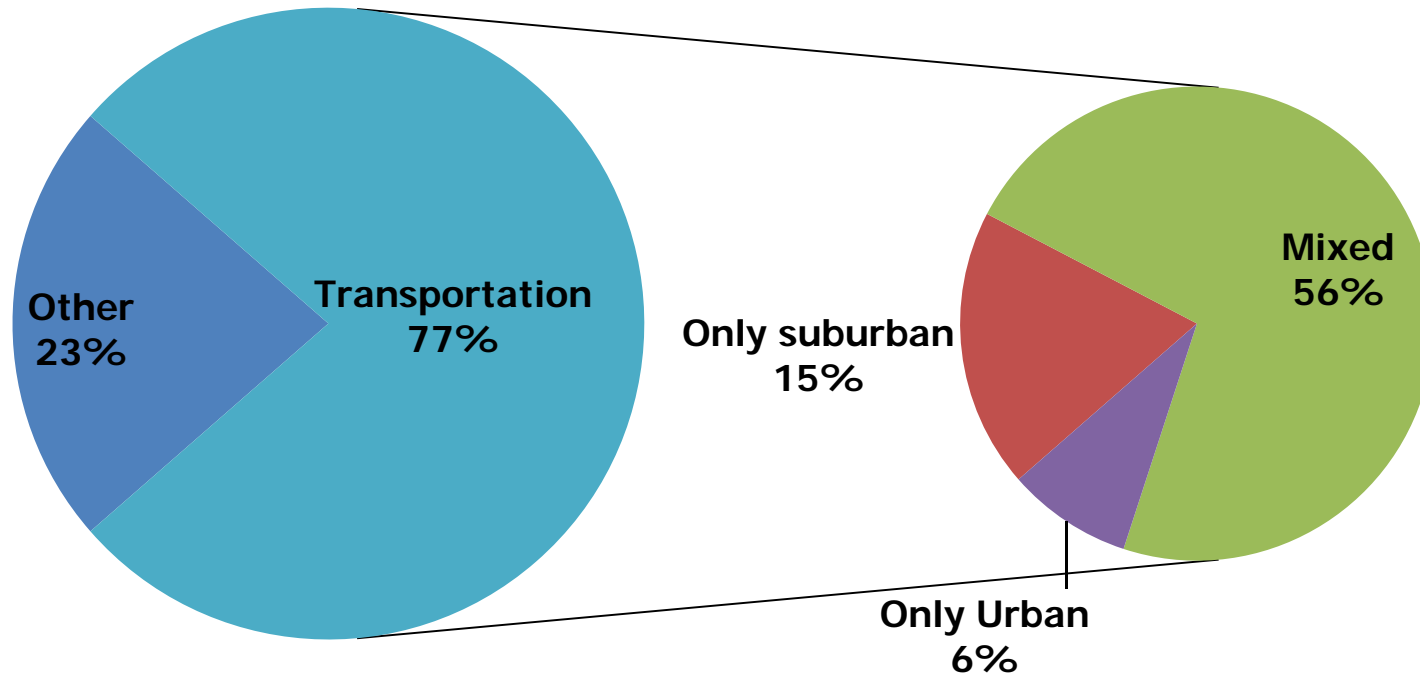
[Source: ASSTRA, Financial data-Business Year 2010]

STRUCTURE OF MEMBER COMPANIES

N. companies

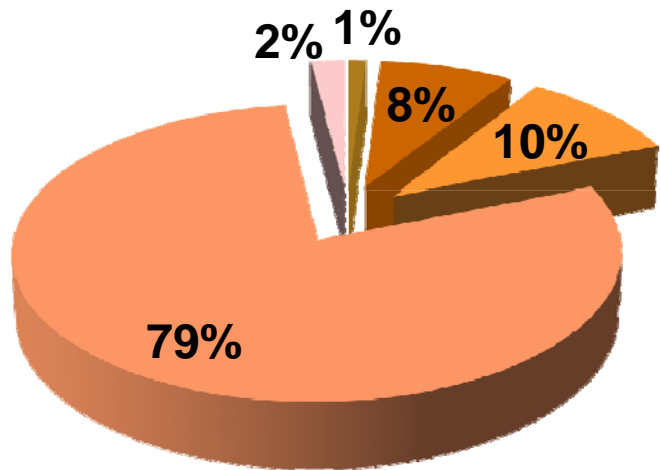


TYPE OF SERVICE (PERCENTAGE-2010)

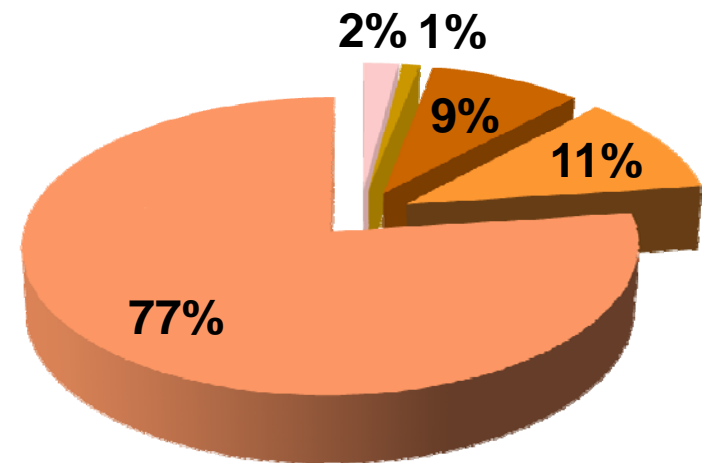


SHARE BY TYPE OF EMPLOYEE (2010;%)

Urban Transport



Extra Urban and Railway Transport



- Managers
- Office Personnel
- Operative Personnel
- On Board Personnel
- Other

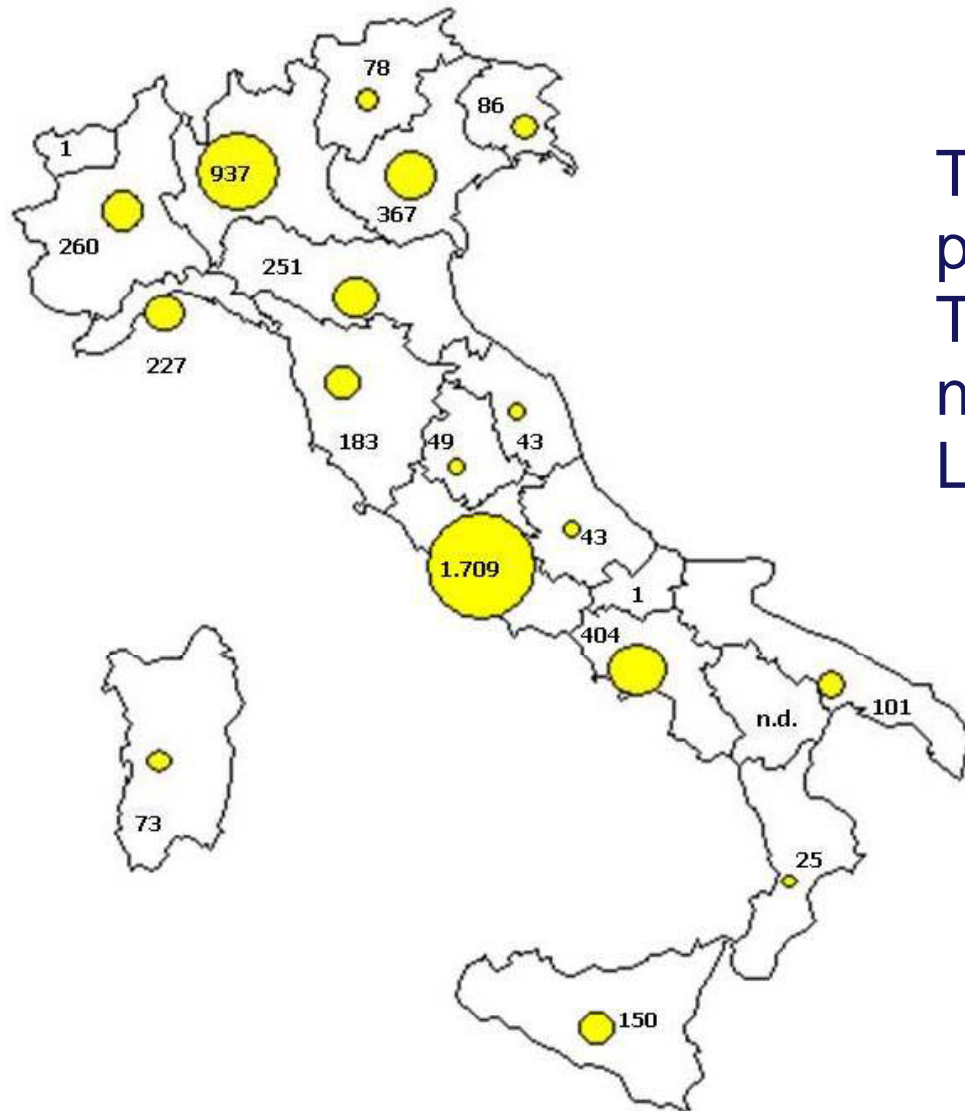
The graphs show the share by type of employee for urban and extra urban and railways transport, mainly composed by on board staff (drivers).

KM COVERED BY REGION (2010; MILLION KM)



The picture shows the km covered by Region. The ones with the highest total Km covered are:
Lazio and Lombardia.

PASSENGERS SHARE BY REGION (2010; MILLION)

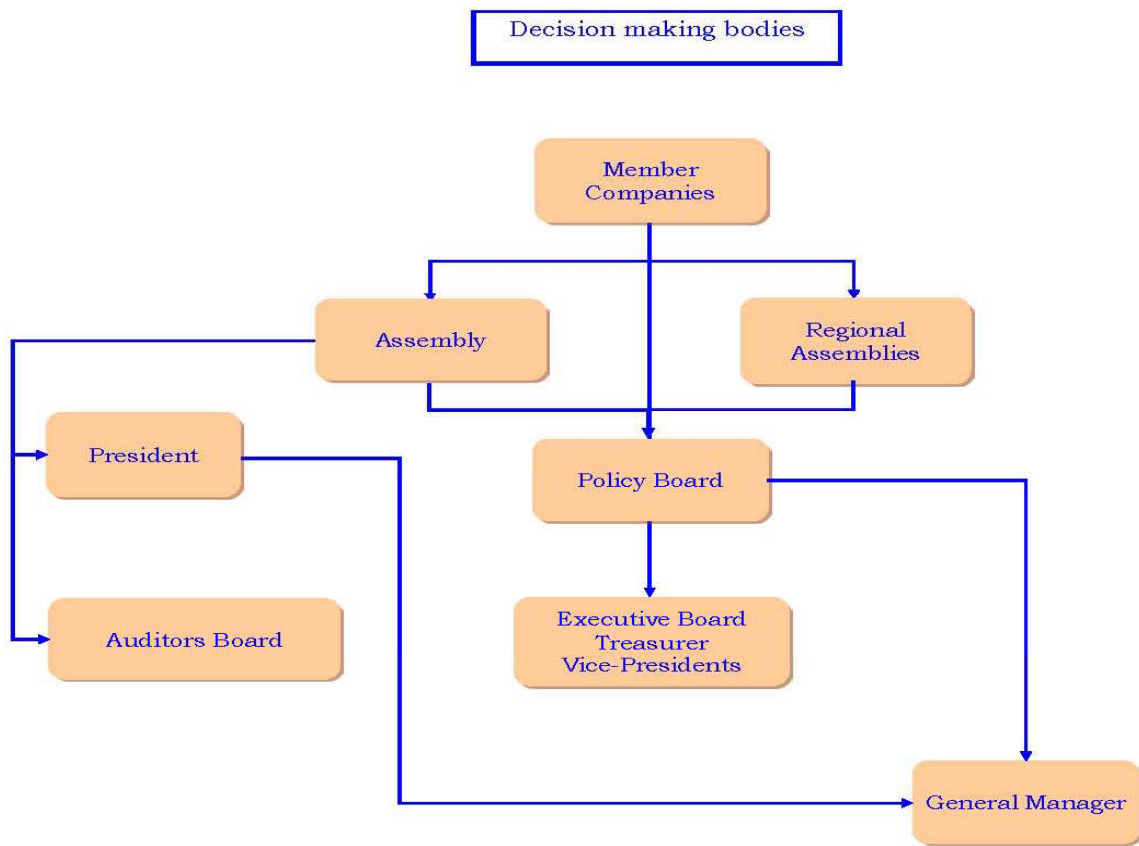


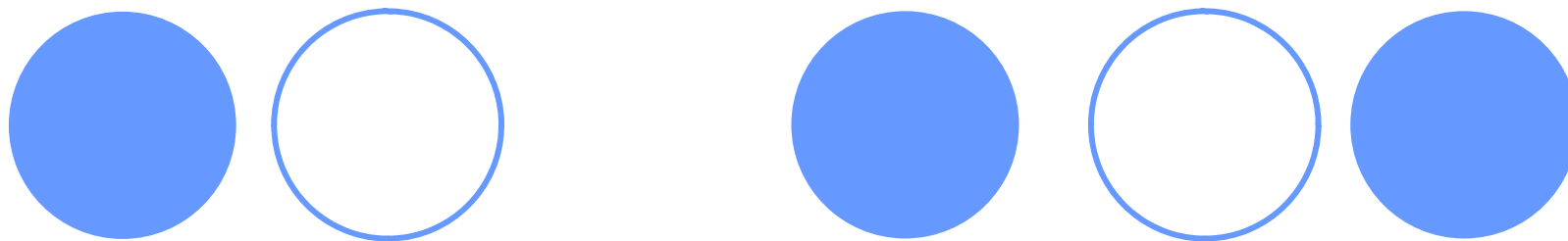
The picture shows the passengers share by Region. The ones with the highest number of passengers are: Lazio and Veneto.

THE MAIN COMMITTEES IN ASSTRA

- CEN Committee
- Environmental Noise Committee
- Bus Committee
- Electronic ticketing Committee
- Trolleybuses Committee
- IT Trans Committee 2012
- Tram Committee
- Social/Environmental Balance Committee
- Contracts Committee
- Standard Cost Committee
- Energy Efficiency Committee
- Award Committee
- Committee on administrative responsibility of the legal persons
- Legal Committee
- Committee on prevention of occupational accidents in the railway
- CQC Committee
- Trade-union Committee
- Touristic railways and historical trains Committee
- Committee of equipping of regional infrastructure
- Marketing Committee

STRUCTURE OF BODIES





Thank you!

direzione@asstra.it