



UNITED NATIONS ECONOMIC COMMISSION FOR EUROPE

24th session of Working Party on Transport Trends and Economics (WP.5)



EATL Project Rail and Road Routes

Miroslav Jovanović, UNECE
Transport Facilitation and Economics Section
September 2011

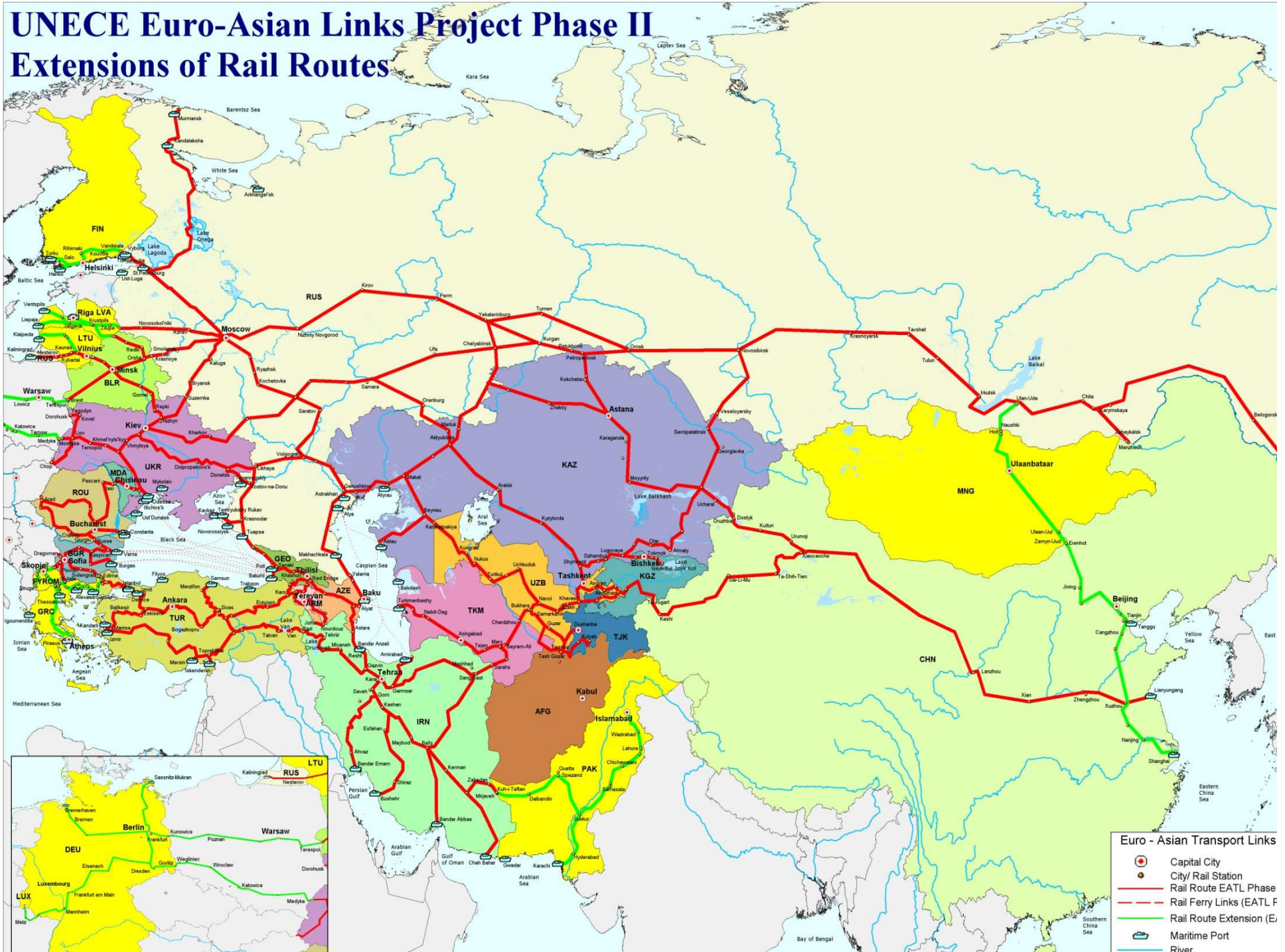


COUNTRIES COVERED (27)

- Afghanistan
- Armenia
- Azerbaijan
- Belarus
- Bulgaria
- China
- Finland*
- Georgia
- Germany*
- Greece*
- Iran
- Kazakhstan
- Kyrgyzstan
- Latvia*
- Lithuania*
- Luxemburg*
- Mongolia*
- Pakistan*
- Moldova
- Romania
- Rus. Federation
- Tajikistan
- FYROM*
- Turkey
- Turkmenistan
- Ukraine
- Uzbekistan

UNECE Euro-Asian Links Project Phase II

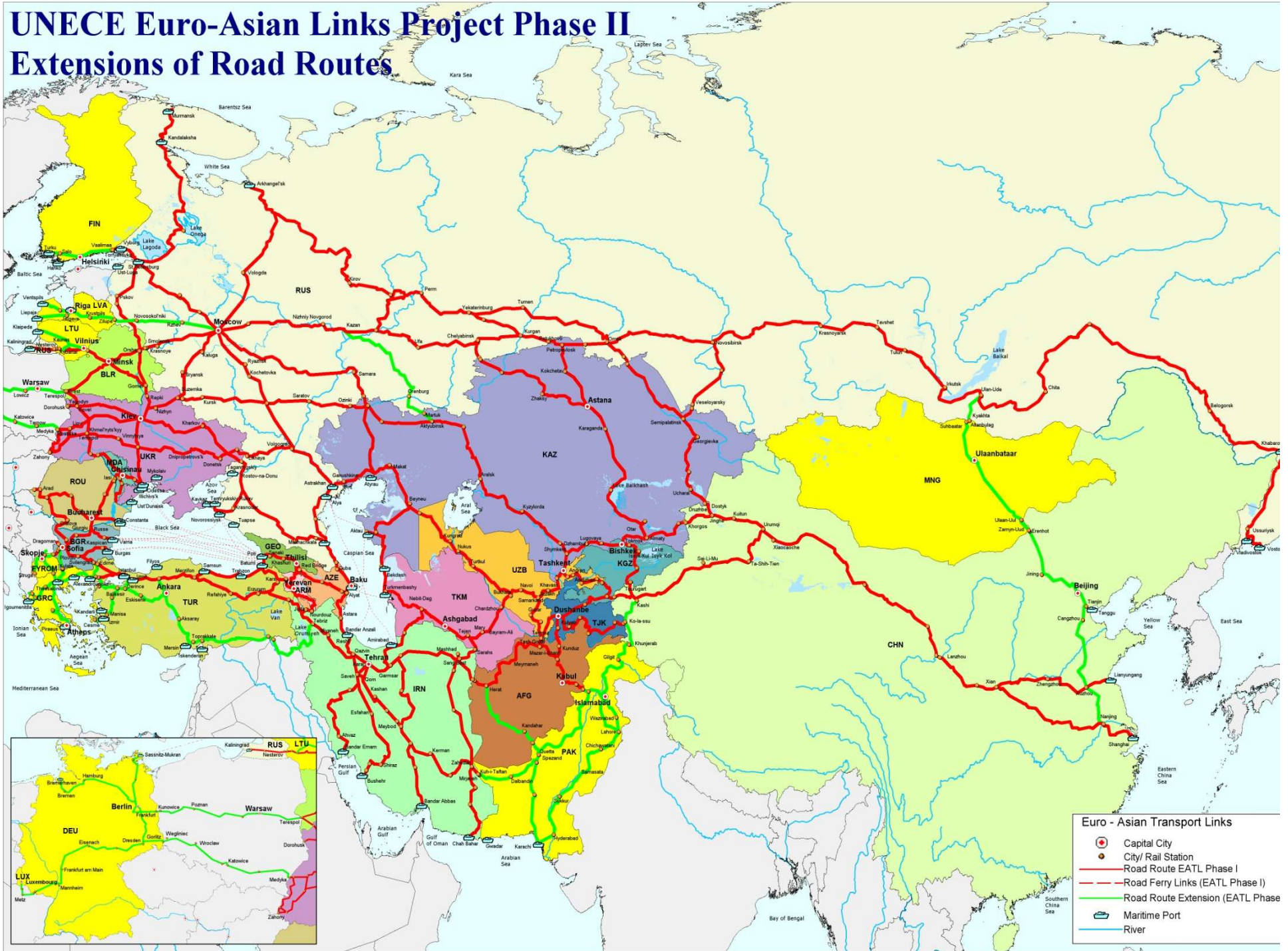
Extensions of Rail Routes



- Euro - Asian Transport Links**
- Capital City
 - City/ Rail Station
 - Rail Route EATL Phase
 - - - Rail Ferry Links (EATL F)
 - Rail Route Extension (E)
 - Maritime Port
 - River

UNECE Euro-Asian Links Project Phase II

Extensions of Road Routes



- Euro - Asian Transport Links**
- Capital City
 - City/ Rail Station
 - Road Route EATL Phase I
 - Road Ferry Links (EATL Phase I)
 - Road Route Extension (EATL Phase II)
 - Maritime Port
 - River



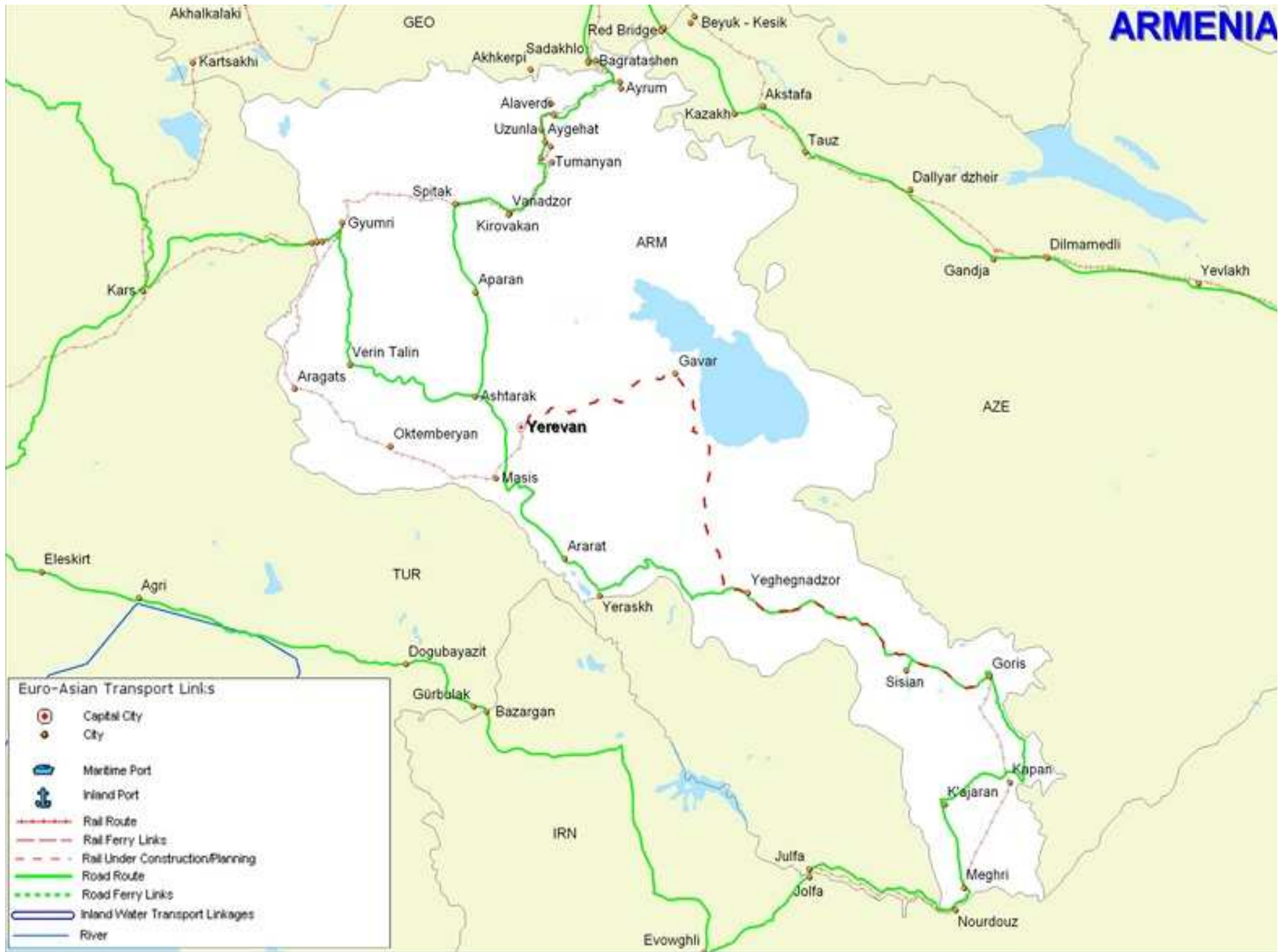
AFGHANISTAN Road



AFGHANISTAN



ARMENIA



AZERBAIJAN











FINLAND* Rail





FINLAND* Road



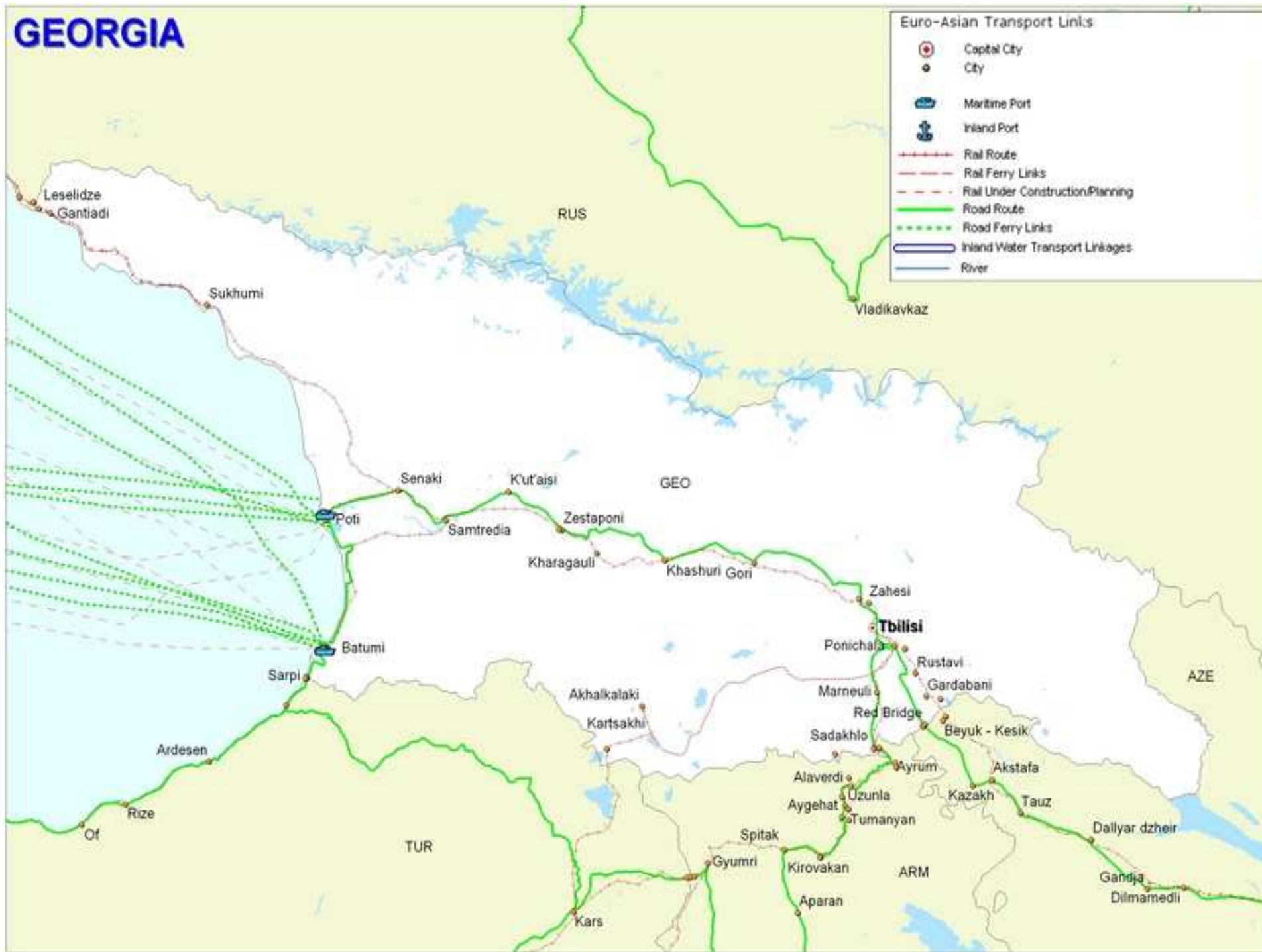
FINLAND SOUTHERN PART

Euro-Asian Transport Links

- Capital City
- City
- Maritime Port
- Inland Port
- Rail Route
- Rail Ferry Links
- Rail Under Construction/Planning
- Road Route
- Road Ferry Links
- Inland Water Transport Linkages
- River



GEORGIA

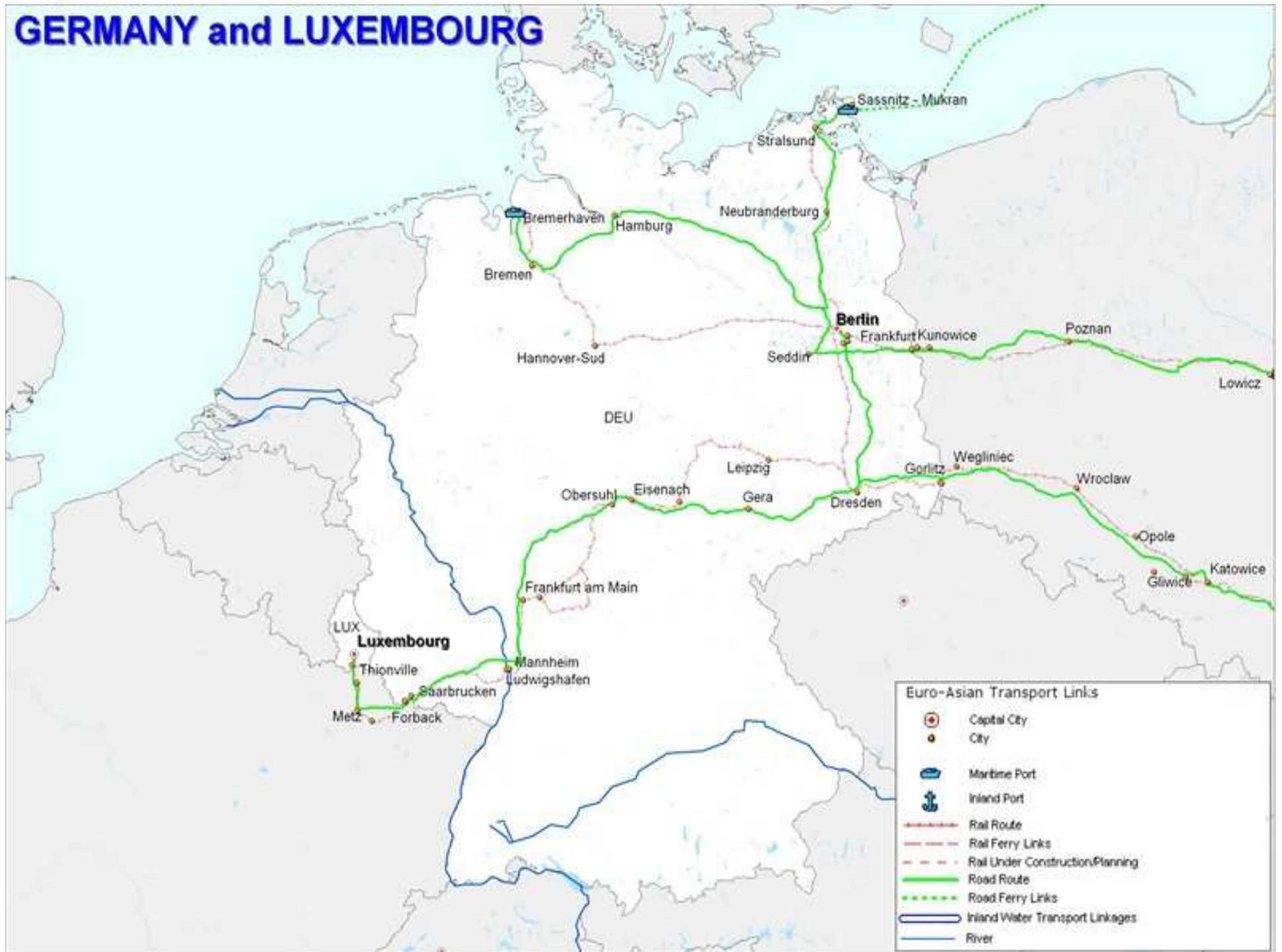




GERMANY* and LUXEMBOURG* Rail



GERMANY and LUXEMBOURG





GREECE* Road



GREECE





Euro-Asian Transport Links

-  Capital City
-  City
-  Maritime Port
-  Inland Port
-  Rail Route
-  Rail Ferry Links
-  Rail Under Construction/Planning
-  Road Route
-  Road Ferry Links
-  Inland Water Transport Linkages
-  River



KYRGYZSTAN





LATVIA* Rail





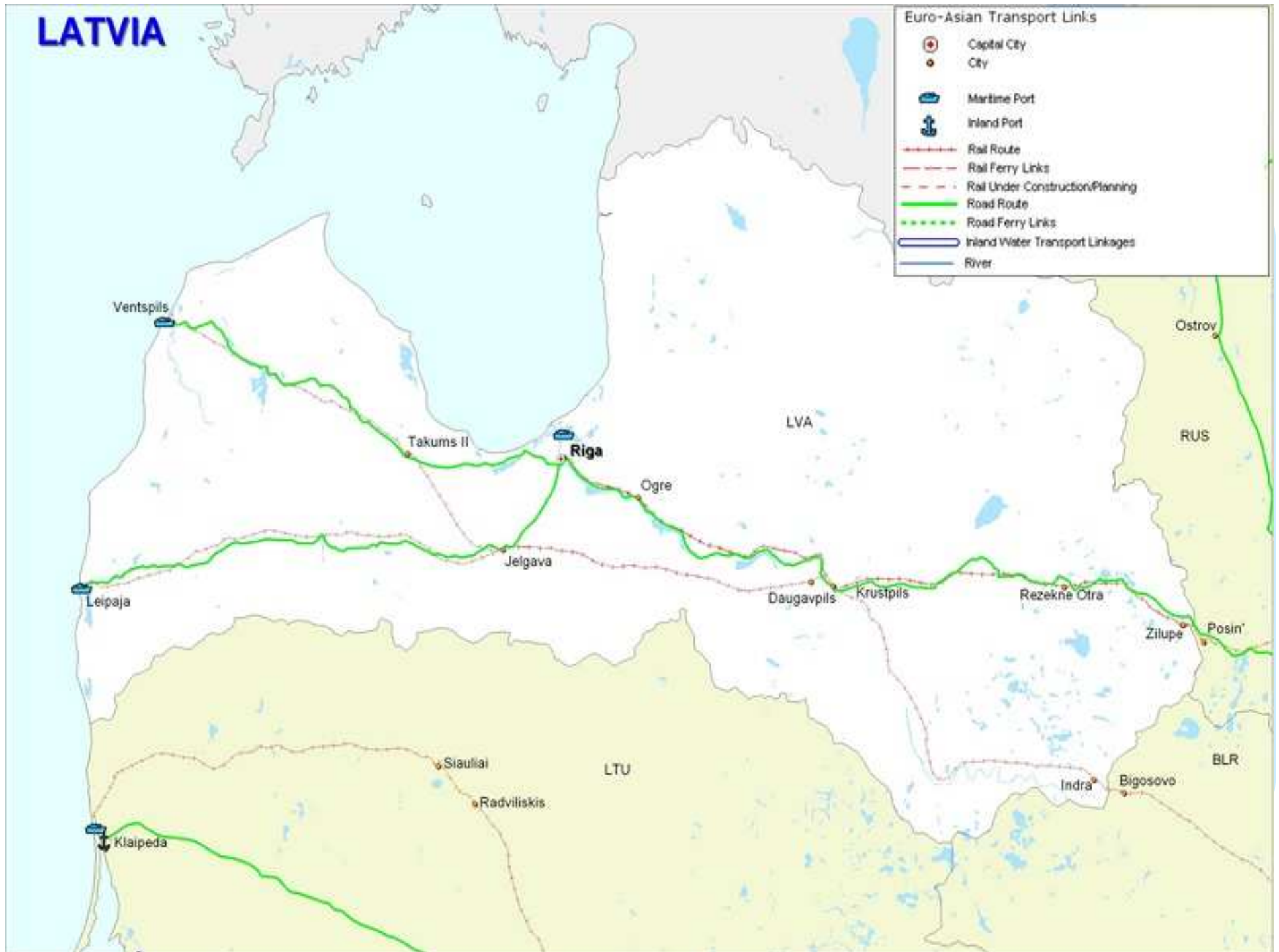
LATVIA* Road



LATVIA

Euro-Asian Transport Links

- ⊙ Capital City
- City
- ⚓ Maritime Port
- ⚓ Inland Port
- Rail Route
- - Rail Ferry Links
- - Rail Under Construction/Planning
- Road Route
- ⋯ Road Ferry Links
- ▭ Inland Water Transport Linkages
- River





LITHUANIA* Rail







MONGOLIA* Rail





MONGOLIA* Road



MONGOLIA





PAKISTAN* Rail



PAKISTAN EATL Road Routes







ROMANIA

Euro-Asian Transport Links

-  Capital City
-  City
-  Maritime Port
-  Inland Port
-  Rail Route
-  Rail Ferry Links
-  Rail Under Construction/Planning
-  Road Route
-  Road Ferry Links
-  Inland Water Transport Linkages
-  River





RUSSIAN FEDERATION Road



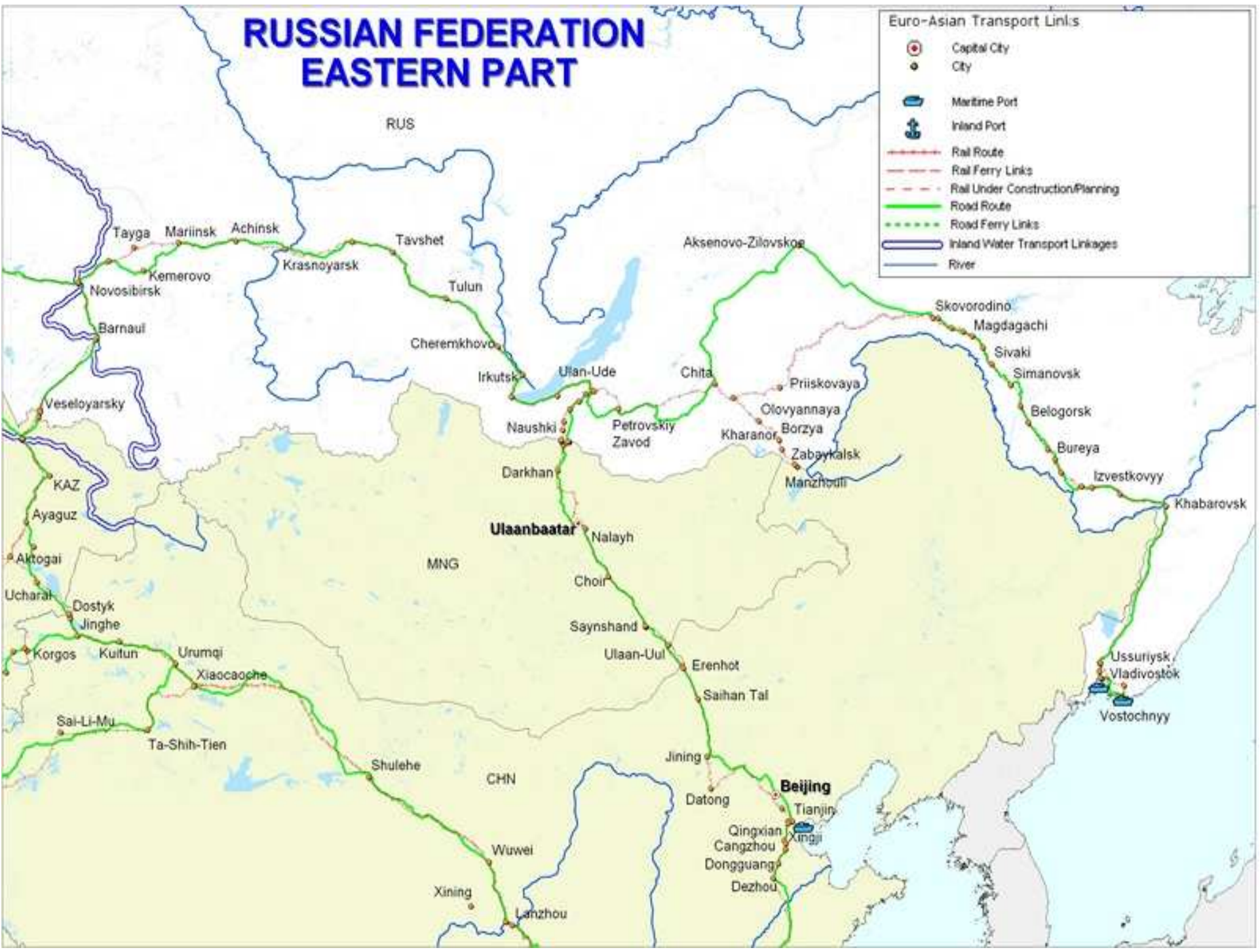
RUSSIAN FEDERATION (CENTRAL PART) - KAZAKHSTAN



RUSSIAN FEDERATION EASTERN PART

Euro-Asian Transport Links

-  Capital City
-  City
-  Maritime Port
-  Inland Port
-  Rail Route
-  Rail Ferry Links
-  Rail Under Construction/Planning
-  Road Route
-  Road Ferry Links
-  Inland Water Transport Linkages
-  River



RUSSIAN FEDERATION WESTERN PART



TAJIKISTAN





The former Yugoslav Republic of Macedonia* Rail





The former Yugoslav Republic of Macedonia* Road



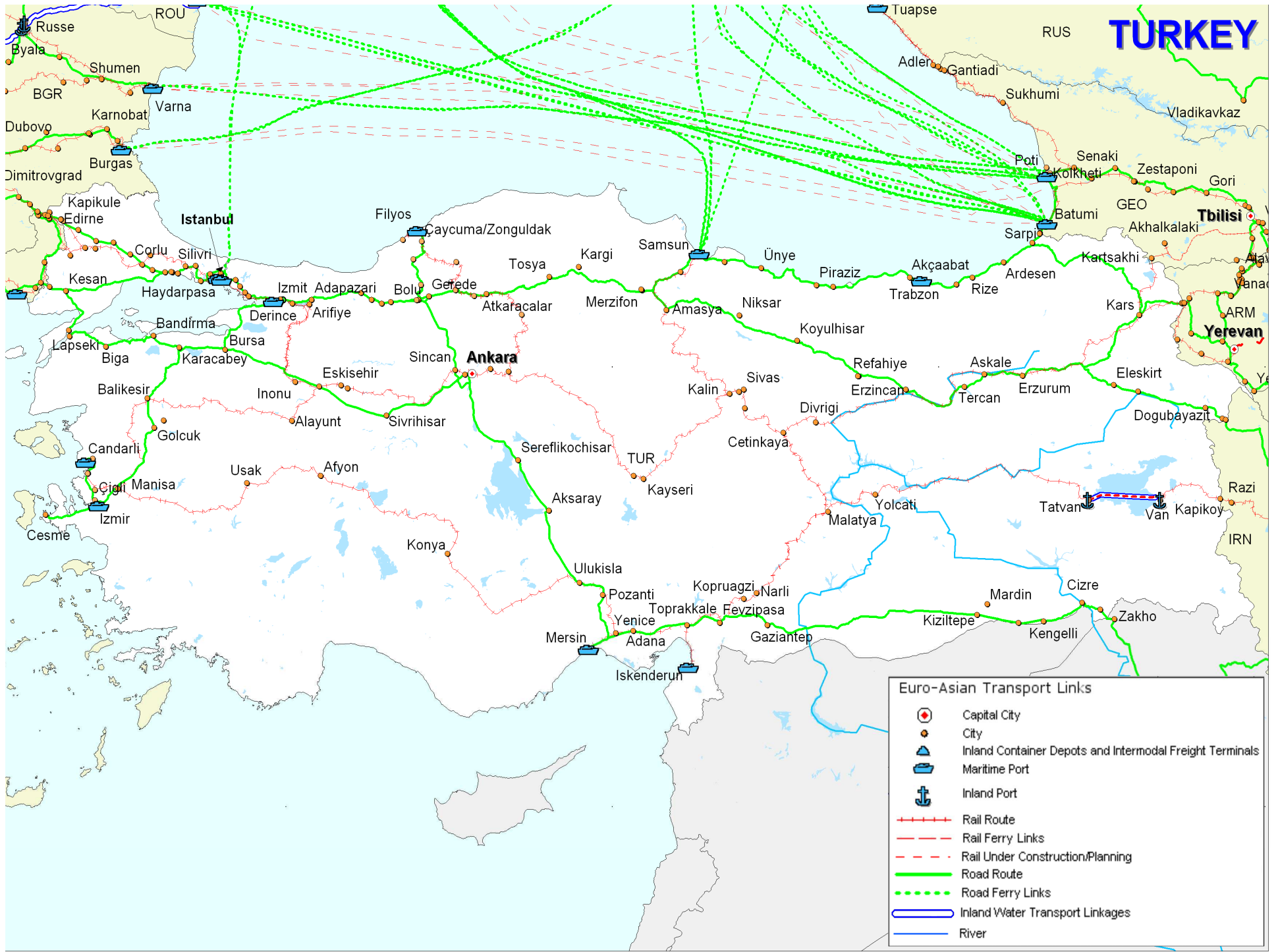
The former Yugoslav Republic of Macedonia



TURKEY EATL Road Routes



TURKEY



TURKMENISTAN





UZBEKISTAN





EATL Phase II (Draft) REPORT

ECONOMIC COMMISSION FOR EUROPE

2 September 2011

**Second unedited draft
Not for quotation or reference**

**EURO-ASIA TRANSPORT LINKAGES
Phase II**

Expert Group Report



UNITED NATIONS
New York and Geneva, 2011



REPORT EATL Phase II - Contents

- 1. Introduction and overview**
- 2. Review of international transport networks and initiatives linking Asia and Europe**
- 3. Transport infrastructure along euro-Asian linkages** (Routes and Projects)
- 4. SWOT analysis**



REPORT EATL Phase II - Contents

- 5. Review of Euro-Asian transport flows, statistics and trends**
- 6. Comparison of Euro – Asian inland transport with existing maritime**
- 7. Geographical information system (GIS) internet application**
- 8. Conclusions**
- 9. Recommendations**



**UNITED NATIONS
ECONOMIC COMMISSION FOR EUROPE**

Thank you!

<http://live.unece.org/trans/welcome.html>