



Economic and Social Council

Distr.: General
7 March 2011

English only

Economic Commission for Europe

Inland Transport Committee

Working Party on Customs Questions affecting Transport

Informal Ad hoc Expert Group on Conceptual and Technical aspects of Computerization of the TIR Procedure

Eighteenth session

Geneva, 9–10 March 2011

Item 3 (d) of the provisional agenda

Reference Model of the TIR Procedure

Chapter 4 - Design

Note by the secretariat*

I. Background

1. At its sixteenth session, the Informal Ad hoc Expert Group on Conceptual and Technical aspects of Computerization of the TIR Procedure (further referred to as “Expert Group”), welcomed document ECE/TRANS/WP.30/GE.1/2009/4, providing first considerations on the contents of Chapter 4 of the eTIR Reference Model. The Expert Group agreed that, whereas it could deal with some aspects of Chapter 4 itself, with support from the secretariat, other technical aspects of Chapter 4 would, most likely, require input from external experts.

2. At its seventeenth session, it welcomed document ECE/TRANS/WP.30/GE.1/2010/3 containing a first draft of the UN/EDIFACT message implementation guidelines (MIG) for messages E9 and E10, to be included in Chapter 4.

3. The Annex to this document contains the amended skeleton of Chapter 4, as originally contained in document ECE/TRANS/WP.30/GE.1/2009/4, including a revised version of the UN/EDIFACT mapping of messages E9 and E10.

* This document was submitted late due to the timing of the session.

II. Design workflow

4. The rationale of the Design workflow is to develop the messages and the collaborations required to exchange these messages on the basis of the specification devised during the analysis phase. UMM envisages the use of various diagrams in the course of this phase (class diagram, use case diagram, sequence diagram, collaboration diagram, statechart (state machine) diagram, activity diagram, component diagram and deployment diagram).

5. In addition to transforming the logical description contained in Chapter 3 into a physical description, Chapter 4 should provide the technical foundations to devise the eTIR system, i.e. detailed description of each component of the system, the interfaces allowing for the collaboration of the actors, selection of technologies (e.g. XML, web services, ...) and detailed descriptions of fallback scenarios, from both the functional and the technical perspective.

III. Further considerations

6. The Expert Group may wish to discuss and consider this document in the framework of its previous discussion on Chapter 4.

Annex

4. DESIGN

4.1. Classes

4.1.1. Class diagrams

4.2. Activity

4.2.1. Detailed activity diagrams

4.2.2. Detailed sequence diagrams

4.2.3. Messages Implementation

4.2.3.1. XML

XML Schema Definition (XSD) files will not be included in this document but made available on the eTIR website for download (etir.unece.org).

4.2.3.2. UN/EDIFACT

Only E9 and E10 messages will be mapped in the UNEDIFACT format. Other messages will only be exchanged using the XML format

4.2.3.2.1 E9 - Advanced cargo information

a. Introduction

This message allows the holder to provide Customs authorities of departure with all information required to begin a TIR transport. It also allows the holder to amend the information and complement it in case of multiple loading places.

b. Entities

See Chapter 3.2.5.1.9.b.

c. Entities and attributes

See Chapter 3.2.5.1.9.d.

d. Rules and conditions

See Chapter 3.2.6.

e. Cross Reference

ENTITIES / ATTRIBUTES	CODE LISTS	FORMAT	STATUS	MAPPING TO EDIFACT GOVCBR
Message				
AdvancedCargoInformation				
—Date		an..17	R	GOVCBR.DTM.C507.2380(0030:010:02)
—Reference		an..35	R	GOVCBR.BGM.C106.1004(0020:020:01)
—Type, coded	CL26	an..3	R	GOVCBR.BGM.C002.1001(0020:010:01)
—Message function, coded	CL16	n..2	R	GOVCBR.BGM.1225(0020:030)
—Total gross weight		n..16,6	O	GOVCBR.CNT.C270.6066(9650:010:02)
AdditionalInformation				
—Remarks		an..512	O	GOVCBR.SG13.FTX[D_4451="ACB"].C108. 4440(0550:040:01)
—Heavy and bulky goods indicator	CL14	an..17	R	GOVCBR.SG13.FTX[D_4451="HAN"].C107. 4441(0550:030:01)
Agent				
—Code		an..17	R	GOVCBR.SG7.NAD.C082.3039(0290:020:01)
—Role, coded	CL02	an..3	R	GOVCBR.SG7.NAD.3035(0290:010)
Amendment				
—Amendment code	CL17	an..3	R	GOVCBR.SG15.AJT.4465(0630:010)
Pointer				
—Sequence number		n..5	R	GOVCBR.SG15.SG16.ERP.C853.1050(0650:020:02)
—Document/message section, coded	CL18	an..3	R	GOVCBR.SG15.SG16.ERP.C701.1049(0650:010:01)
—Tag identifier	CL19	an..4	R	GOVCBR.SG15.SG16.ELU.9162(0660:010)
SubContractor				
—Name		an..70	D	GOVCBR.SG7[D_3035="CA"].NAD.C080.3036(0290:040:01)
—Code	CL15	an..17	D	GOVCBR.SG7[D_3035="CA"].NAD.C082.3039(0290:020:01)
Address				
—City name		an..35	R	GOVCBR.SG7[D_3035="CA"].NAD.3164(0290:060)
—Country, coded	CL04	a2	R	GOVCBR.SG7[D_3035="CA"].NAD.3207(0290:090)
—Street and number/P.O. Box		an..70	R	GOVCBR.SG7[D_3035="CA"].NAD.C059.3042(0290:050:01)
—Postcode identification		an..9	R	GOVCBR.SG7[D_3035="CA"].NAD.3251(0290:080)
Consignment				
—Sequence number		n..5	R	GOVCBR.SG133.CNI.1490(5560:010)
AttachedDocuments				
—Issuing date		an..17	R	GOVCBR.SG133.SG137.DTM.C507.2380(5770:010:02)
—Number		an..35	R	GOVCBR.SG133.SG137.DOC.C503.1004(5750:020:01)

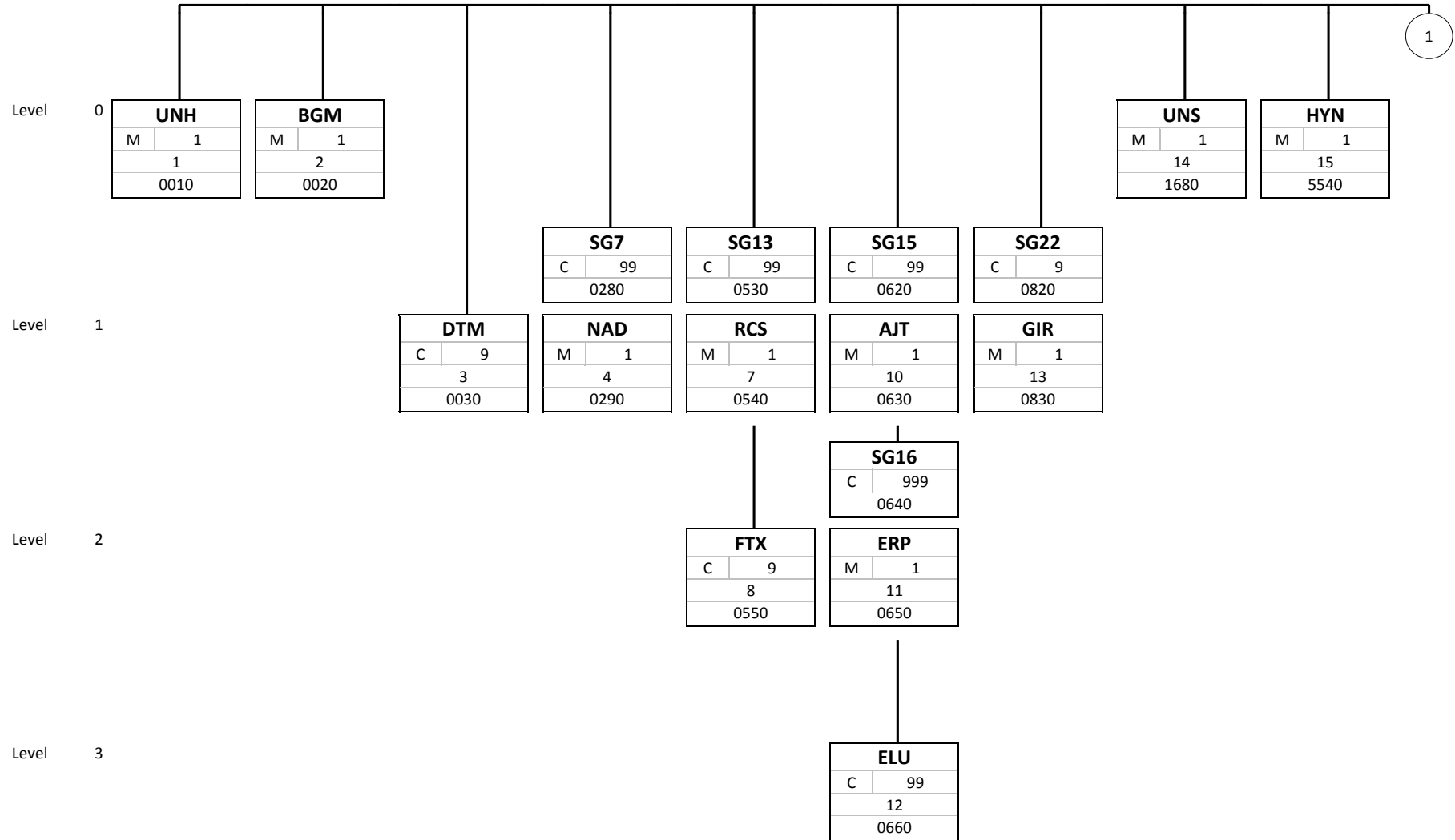
ENTITIES / ATTRIBUTES	CODE LISTS	FORMAT	STATUS	MAPPING TO EDIFACT GOVCBR
—Type, coded	CL06	an..3	R	GOVCBR.SG133.SG137.DOC.C002.1001(5750:010:01)
ConsignmentItem				
—Sequence number		n..5	R	GOVCBR.SG133.SG170.SEQ.C286.1050(7090:020:01)
AdditionalInformation				
—Remarks		an..512	R	GOVCBR.SG133.SG170.SG180.FTX.C108.4440(7460:040:01)
Goods				
—Description		an..256	D	GOVCBR.SG133.SG170.SG192.FTX.C108.4440(7950:040:01)
Classification				
—Code		an..18	R	GOVCBR.SG133.SG170.SG192.TCC.C528.7357(8060:030:01)
—Type	CL03	an..3	R	GOVCBR.SG133.SG170.SG192.TCC.C528.1131(8060:030:02)
Consignee				
—Name		an..70	D	GOVCBR.SG133.SG170.SG171[D_3035="CN"].NAD.C080.3036(7150:040:01)
—Code		an..17	D	GOVCBR.SG133.SG170.SG171[D_3035="CN"].NAD.C082.3039(7150:020:01)
Address				
—City name		an..35	R	GOVCBR.SG133.SG170.SG171[D_3035="CN"].NAD.3164(7150:060)
—Country, coded	CL04	a2	R	GOVCBR.SG133.SG170.SG171[D_3035="CN"].NAD.3207(7150:090)
—Street and number/P.O. Box		an..70	R	GOVCBR.SG133.SG170.SG171[D_3035="CN"].NAD.C059.3042(7150:050:01)
—Postcode identification		an..9	R	GOVCBR.SG133.SG170.SG171[D_3035="CN"].NAD.3251(7150:080)
Consignor				
—Name		an..70	D	GOVCBR.SG133.SG170.SG171[D_3035="CZ"].NAD.C080.3036(7150:040:01)
—Code		an..17	D	GOVCBR.SG133.SG170.SG171[D_3035="CZ"].NAD.C082.3039(7150:020:01)
Address				
—City name		an..35	R	GOVCBR.SG133.SG170.SG171[D_3035="CZ"].NAD.3164(7150:060)
—Country, coded	CL04	a2	R	GOVCBR.SG133.SG170.SG171[D_3035="CZ"].NAD.3207(7150:090)
—Street and number/P.O. Box		an..70	R	GOVCBR.SG133.SG170.SG171[D_3035="CZ"].NAD.C059.3042(7150:050:01)

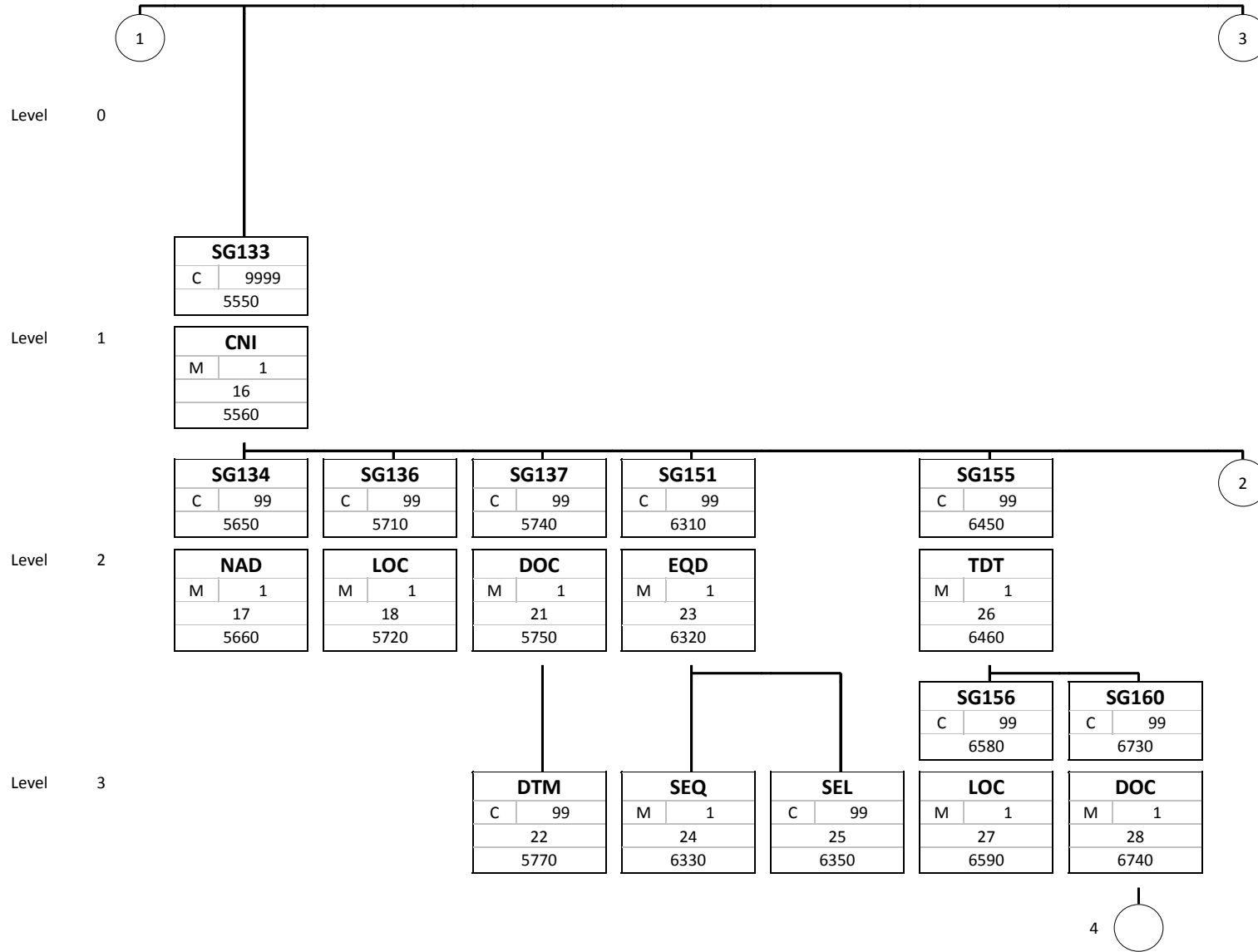
ENTITIES / ATTRIBUTES	CODE LISTS	FORMAT	STATUS	MAPPING TO EDIFACT GOVCBR
└ Postcode identification		an..9	R	GOVCBR.SG133.SG170.SG171[D_3035="CZ"].NAD.3251(7150:080)
DeliveryDestination				
└ Name		an..70	R	GOVCBR.SG133.SG170.SG171[D_3035="DP"].NAD.C080.3036(7150:040:01)
Address				
└ City name		an..35	R	GOVCBR.SG133.SG170.SG171[D_3035="DP"].NAD.3164(7150:060)
└ Country, coded	CL04	a2	R	GOVCBR.SG133.SG170.SG171[D_3035="DP"].NAD.3207(7150:090)
└ Street and number/P.O. Box		an..70	R	GOVCBR.SG133.SG170.SG171[D_3035="DP"].NAD.C059.3042(7150:050:01)
└ Postcode identification		an..9	R	GOVCBR.SG133.SG170.SG171[D_3035="DP"].NAD.3251(7150:080)
GoodsMeasure				
└ Gross weight		n..16,6	R	GOVCBR.SG133.SG170.SG185.MEA.C174.6314(7640:030:02)
Packaging				
└ Marks and numbers		an..512	O	GOVCBR.SG133.SG170.SG186.PCI.C210.7102(7680:020:01)
└ Number of packages		n..8	D	GOVCBR.SG133.SG170.SG186.PAC.7224(7670:010)
└ Type, coded	CL07	an..2	R	GOVCBR.SG133.SG170.SG186.PAC.C202.7065(7670:030:01)
TransportEquipment				
└ Identification		an..17	R	GOVCBR.SG133.SG170.SG188.EQD.C237.8260(7780:020:01)
UCR				
└ Identifier		an..35	O	GOVCBR.SG133.SG170.RFF.C506.1154(7120:010:02)
LoadingLocation				
└ Name		an..256	O	GOVCBR.SG133.SG136[D_3227="9"].LOC.C517.3224(5720:020:04)
NotifyParty				
└ Name		an..70	D	GOVCBR.SG133.SG134.NAD.C080.3036(5660:040:01)
└ Code		an..17	D	GOVCBR.SG133.SG134.NAD.C082.3039(5660:020:01)
Address				
└ City name		an..35	R	GOVCBR.SG133.SG134.NAD.3164(5660:060)
└ Country, coded	CL04	a2	R	GOVCBR.SG133.SG134.NAD.3207(5660:090)
└ Street and number/P.O. Box		an..70	R	GOVCBR.SG133.SG134.NAD.C059.3042(5660:050:01)
└ Postcode identification		an..9	R	GOVCBR.SG133.SG134.NAD.3251(5660:080)

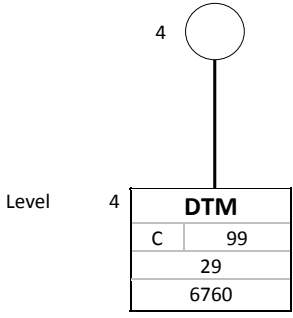
ENTITIES / ATTRIBUTES	CODE LISTS	FORMAT	STATUS	MAPPING TO EDIFACT GOVCBR
CustomsOfficeOfDeparture				
Code	CL13	an..17	R	GOVCBR.SG133.SG136[D_3227="5"].LOC.C517.3225(5720:020:01)
CustomsOfficeOfDestination				
Code	CL13	an..17	R	GOVCBR.SG133.SG136[D_3227="8"].LOC.C517.3225(5720:020:01)
TransportMean				
Identification		an..25	R	GOVCBR.SG133.SG155.TDT.C222.8212(6460:080:04)
Type, coded	CL05	an..4	R	GOVCBR.SG133.SG155.TDT.C001.8179(6460:040:01)
Nationality	CL04	a2	R	GOVCBR.SG133.SG155.TDT.C222.8453(6460:080:05)
Conveyance reference number		an..17	O	GOVCBR.SG133.SG155.TDT.8028(6460:020)
CountryOfRouting				
Sequence number		n..5	R	MAPPING WILL BE POSSIBLE IN NEW VERSION OF GOVCBR
Country, coded	CL04	a2	R	GOVCBR.SG133.SG155.SG156.LOC.C517.3225(6590:020:01)
CertificateOfApproval				
Date		an..17	R	GOVCBR.SG133.SG155.SG160.DTM.C507.2380(6760:010:02)
Number		an..35	R	GOVCBR.SG133.SG155.SG160.DOC.C503.1004(6740:020:01)
Type, coded	CL06	an..3	R	GOVCBR.SG133.SG155.SG160.DOC.C002.1001(6740:010:01)
TransportEquipment				
Sequence number		n..5	R	GOVCBR.SG133.SG151.SEQ.C286.1050(6330:020:01)
Size and type identification	CL01	an..4	R	GOVCBR.SG133.SG151.EQD.C224.8155(6320:030:01)
Identification		an..17	R	GOVCBR.SG133.SG151.EQD.C237.8260(6320:020:01)
Seal				
Sequence number		n..5	R	MAPPING WILL BE POSSIBLE IN NEW VERSION OF GOVCBR
Seal number		an..35	R	GOVCBR.SG133.SG151.SEL.9308(6350:010)
Seal type code	CL08	an..3	O	GOVCBR.SG133.SG151.SEL.4525(6350:050)
Guarantee				
Reference		an..35	R	GOVCBR.SG22.GIR.C206.7402(0830:020:01)
Holder				
Name		an..70	O	GOVCBR.SG7[D_3035="AF"].NAD.C080.3036(0290:040:01)

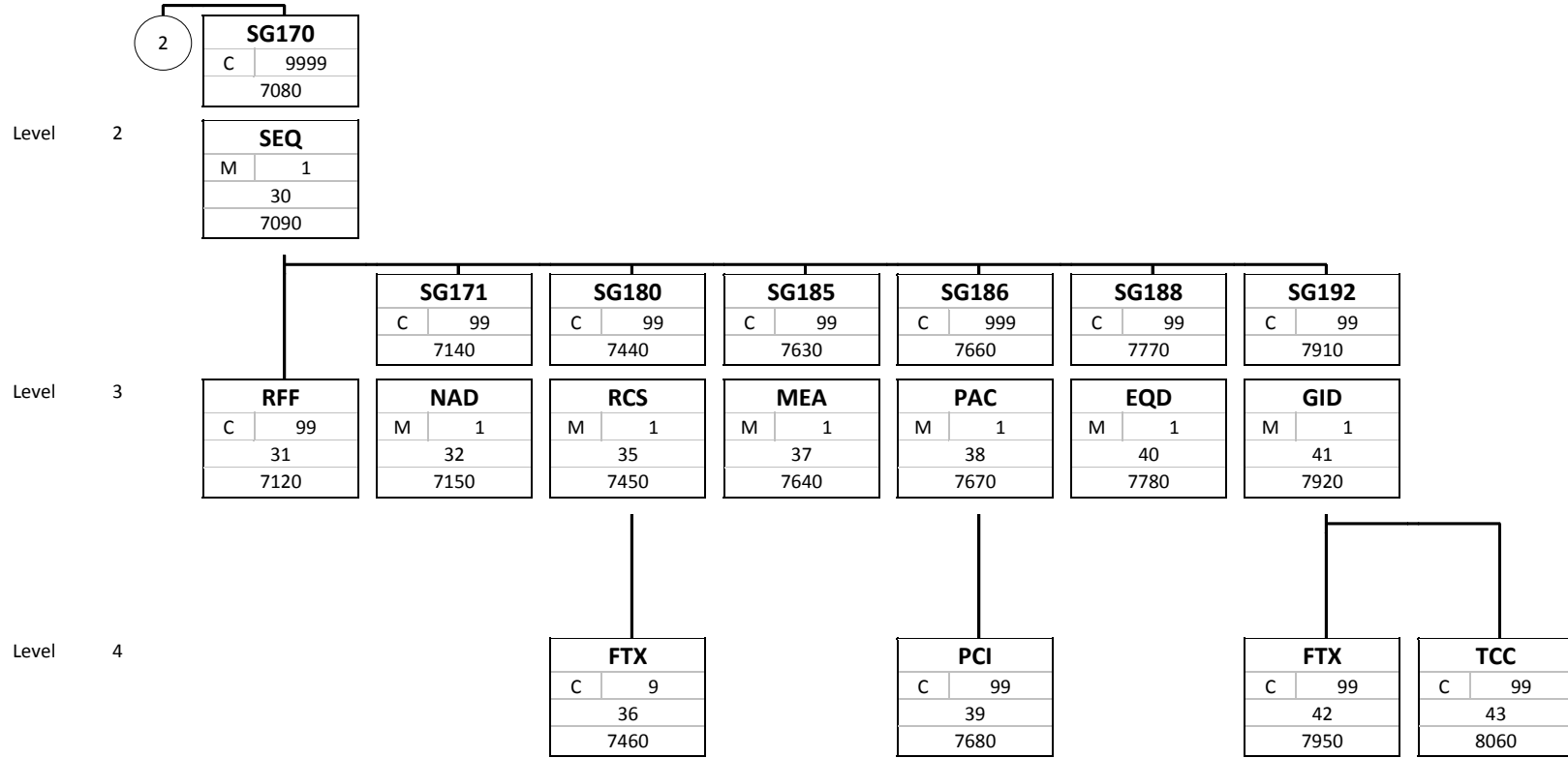
ENTITIES / ATTRIBUTES	CODE LISTS	FORMAT	STATUS	MAPPING TO EDIFACT GOVCBR
Code	CL15	an..17	R	GOVCBR.SG7[D_3035="AF"].NAD.C082.3039(0290:020:01)
Address				
City name		an..35	R	GOVCBR.SG7[D_3035="AF"].NAD.3164(0290:060)
Country, coded	CL04	a2	R	GOVCBR.SG7[D_3035="AF"].NAD.3207(0290:090)
Street and number/P.O. Box		an..70	R	GOVCBR.SG7[D_3035="AF"].NAD.C059.3042(0290:050:01)
Postcode identification		an..9	R	GOVCBR.SG7[D_3035="AF"].NAD.3251(0290:080)

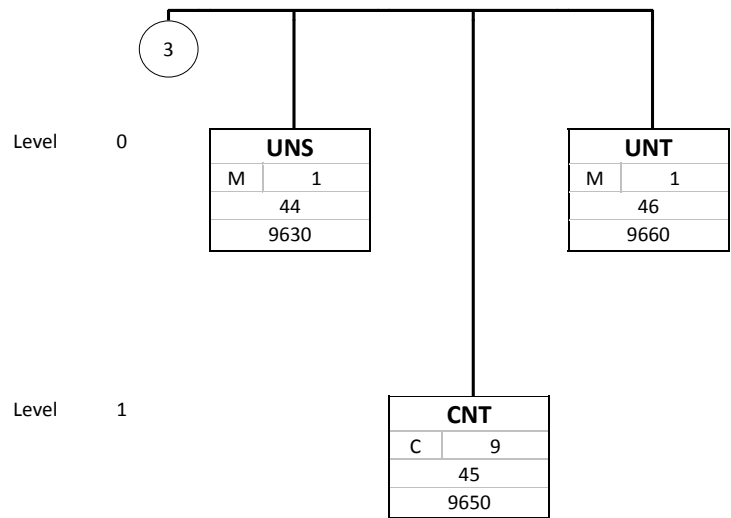
f. Branching Diagram











g. Segment descriptions

1 UNH Message header			M	1
EDIFACT			Functional Mapping	
0062	Message reference number	M an..14	Message reference number (M, an..14)	
S009	Message identifier	M		
0065	Message type	M an..6	Code value: GOVCBR	Government cross border regulatory message
0052	Message version number	M an..3	Code value: D	Draft version/UN/EDIFACT Directory
0054	Message release number	M an..3	Code value: 10A	Release 2010 - A
0051	Controlling agency	M an..2	Code value: UN	UN/CEFACT
0057	Association assigned code	C an..6		
0068	Common access reference	C an..35		
S010	Status of the transfer	C		
0070	Sequence of transfers	M n..2		
0073	First and last transfer	C a1		
2 BGM Beginning of message			M	1
EDIFACT			Functional Mapping	
C002	Document/message name	C		
1001	Document name code	C an..3	MESSAGE	Type, coded R an..3
			Code list: CL26	Message sub types
			Code value: E9	Advanced cargo information
1131	Code list identification code	C an..17		
3055	Code list responsible agency code	C an..3	Code value: 6	UN/ECE (United Nations - Economic Commission for Europe)
1000	Document name	C an..35		
C106	Document/message identification	C		
1004	Document identifier	C an..70	ADVANCEDCARGOINFORMATION	Reference R an..35
1056	Version identifier	C an..9		
1060	Revision identifier	C an..6		
1225	Message function code	C an..3	MESSAGE	Message function, coded R n..2
			Code list: CL16	Message function code
			Code value: 4	Change
			Code value: 9	Original
4343	Response type code	C an..3		
3 DTM Date/time/period			C	9
EDIFACT			Functional Mapping	
C507	Date/time/period	M		
2005	Date or time or period function code qualifier	M an..3	Code value: 137	Document issue date time
2380	Date or time or period text	C an..35	ADVANCEDCARGOINFORMATION	Date R an..17
2379	Date or time or period format code	C an..3	Code value: 304	CCYYMMDDHHMMSSZZ
4 SG7 NAD-DTM-GEI-STS-IFD-SG8			C	99
4 NAD Name and address			M	1
EDIFACT			Functional Mapping	
3035	Party function code qualifier	M an..3	AGENT	Role, coded R an..3
			Code list: CL02	Party role codes
			Code value: AE	Declarant's agent/representative
			AG	Agent
			CB	Customs broker
			FW	Freight forwarder
C082	Party identification details	C		
3039	Party identifier	M an..35	AGENT	Code R an..17

1131	Code list identification code	C	an..17
3055	Code list responsible agency code	C	an..3
C058	Name and address	C	
3124	Name and address description	M	an..35
3124	Name and address description	C	an..35
3124	Name and address description	C	an..35
3124	Name and address description	C	an..35
3124	Name and address description	C	an..35
C080	Party name	C	
3036	Party name	M	an..70
3036	Party name	C	an..70
3036	Party name	C	an..70
3036	Party name	C	an..70
3036	Party name	C	an..70
3045	Party name format code	C	an..3
C059	Street	C	
3042	Street and number or post office box identifier	M	an..35
3042	Street and number or post office box identifier	C	an..35
3042	Street and number or post office box identifier	C	an..35
3042	Street and number or post office box identifier	C	an..35
3164	City name	C	an..35
C819	Country subdivision details	C	
3229	Country subdivision identifier	C	an..9
1131	Code list identification code	C	an..17
3055	Code list responsible agency code	C	an..3
3228	Country subdivision name	C	an..70
3251	Postal identification code	C	an..17
3207	Country identifier	C	an..3

5 **SG7** **NAD-DTM-GEI-STS-IFD-SG8** **C** **99**
NAD **Name and address** **M** **1**

EDIFACT			Functional Mapping		
3035	Party function code qualifier	M an..3	Code value: CA	Carrier	
C082	Party identification details	C			
3039	Party identifier	M an..35	SUBCONTRACTOR	Code	D an..17
1131	Code list identification code	C an..17	Code list: CL15	International TIR database	
3055	Code list responsible agency code	C an..3	Code value: 6	UN/ECE (United Nations - Economic Commission for Europe)	
C058	Name and address	C			
3124	Name and address description	M an..35			
3124	Name and address description	C an..35			
3124	Name and address description	C an..35			
3124	Name and address description	C an..35			
3124	Name and address description	C an..35			

C080	Party name	C				
3036	Party name	M an..70	SUBCONTRACTOR	Name	D	an..70
3036	Party name	C an..70		- continued 35 -		
3036	Party name	C an..70				
3036	Party name	C an..70				
3036	Party name	C an..70				
3045	Party name format code	C an..3				
C059	Street	C				
3042	Street and number or post office box identifier	M an..35	ADDRESS	Street and number/P.O. Box	R	an..70
3042	Street and number or post office box identifier	C an..35		- continued 35 -		
3042	Street and number or post office box identifier	C an..35				
3042	Street and number or post office box identifier	C an..35				
3164	City name	C an..35	ADDRESS	City name	R	an..35
C819	Country subdivision details	C				
3229	Country subdivision identifier	C an..9				
1131	Code list identification code	C an..17				
3055	Code list responsible agency code	C an..3				
3228	Country subdivision name	C an..70				
3251	Postal identification code	C an..17	ADDRESS	Postcode identification	R	an..9
3207	Country identifier	C an..3	ADDRESS	Country, coded	R	a2
			Code list: CL04	Country name code		
			Code value: Various			

6 **SG7** **NAD-DTM-GEI-STS-IFD-SG8** **C** **99**
NAD **Name and address** **M** **1**

EDIFACT			Functional Mapping			
3035	Party function code qualifier	M an..3	Code value: AF	Transit principal		
C082	Party identification details	C				
3039	Party identifier	M an..35	HOLDER	Code	R	an..17
1131	Code list identification code	C an..17	Code list: CL15	International TIR database		
3055	Code list responsible agency code	C an..3	Code value: 6	UN/ECE (United Nations - Economic Commission for Europe)		
C058	Name and address	C				
3124	Name and address description	M an..35				
3124	Name and address description	C an..35				
3124	Name and address description	C an..35				
3124	Name and address description	C an..35				
3124	Name and address description	C an..35				
C080	Party name	C				
3036	Party name	M an..70	HOLDER	Name	O	an..70
3036	Party name	C an..70		- continued 35 -		
3036	Party name	C an..70				
3036	Party name	C an..70				
3036	Party name	C an..70				
3045	Party name format code	C an..3				
C059	Street	C				
3042	Street and number or post office box identifier	M an..35	ADDRESS	Street and number/P.O. Box	R	an..70

3042	Street and number or post office box identifier	C	an..35						
3042	Street and number or post office box identifier	C	an..35						
3042	Street and number or post office box identifier	C	an..35						
3164	City name	C	an..35	ADDRESS	City name		R		an..35
C819	Country subdivision details	C							
3229	Country subdivision identifier	C	an..9						
1131	Code list identification code	C	an..17						
3055	Code list responsible agency code	C	an..3						
3228	Country subdivision name	C	an..70						
3251	Postal identification code	C	an..17	ADDRESS	Postcode identification		R		an..9
3207	Country identifier	C	an..3	ADDRESS	Country, coded		R		a2
				Code list:	CL04	Country name code			
				Code value:	Various				

7 **SG13** **RCS-FTX-DTM-GEI-ALI-SG14** **C** **99**
RCS **Requirements and conditions** **M** **1**

EDIFACT				Functional Mapping					
7293	Sector area identification code qualifier	M	an..3						
C550	Requirement/condition identification	C							
7295	Requirement or condition description identifier	M	an..17						
1131	Code list identification code	C	an..17						
3055	Code list responsible agency code	C	an..3						
7294	Requirement or condition description	C	an..35						
1229	Action code	C	an..3						
3207	Country identifier	C	an..3						

MAPPING COMMENT: This segment is required if other information from this segment group is used (trigger segment)

8 **SG13** **RCS-FTX-DTM-GEI-ALI-SG14** **C** **99**
FTX **Free text** **C** **9**

EDIFACT				Functional Mapping					
4451	Text subject code qualifier	M	an..3						
4453	Free text function code	C	an..3						
C107	Text reference	C							
4441	Free text description code	M	an..17						
1131	Code list identification code	C	an..17						
3055	Code list responsible agency code	C	an..3						
C108	Text literal	C							
4440	Free text	M	an..512	ADDITIONALINFORMATION	Remarks		O		an..512
4440	Free text	C	an..512						
4440	Free text	C	an..512						
4440	Free text	C	an..512						
4440	Free text	C	an..512						
3453	Language name code	C	an..3						
4447	Free text format code	C	an..3						

9 **SG13** **RCS-FTX-DTM-GEI-ALI-SG14** **C** **99**
FTX **Free text** **C** **9**

EDIFACT			Functional Mapping		
4451	Text subject code qualifier	M an..3	Code value: HAN	Consignment handling instruction	
4453	Free text function code	C an..3			
C107	Text reference	C			
4441	Free text description code	M an..17	ADDITIONALINFORMATI ON	Heavy and bulky goods indicator	R an..17
			Code list: CL14	Indicator	
			Code value: 0	No	
			1	Yes	
1131	Code list identification code	C an..17			
3055	Code list responsible agency code	C an..3	Code value: 6	UN/ECE (United Nations - Economic Commission for Europe)	
C108	Text literal	C			
4440	Free text	M an..512			
4440	Free text	C an..512			
4440	Free text	C an..512			
4440	Free text	C an..512			
4440	Free text	C an..512			
3453	Language name code	C an..3			
4447	Free text format code	C an..3			

10 **SG15** **AJT-SG16** **C** **99**
AJT **Adjustment details** **M** **1**

EDIFACT			Functional Mapping		
4465	Adjustment reason description code	M an..3	AMENDMENT	Amendment code	R an..3
			Code list: CL17	Amendment code	
1082	Line item identifier	C an..6	Code value: Various		

11 **SG16** **ERP-ELU** **C** **999**
ERP **Error point details** **M** **1**

EDIFACT			Functional Mapping		
C701	Error point details	C			
1049	Message section code	C an..3	POINTER	Document/message section, coded	R an..3
			Code list: CL18	Message section code (codes to be defined)	
			Code value: Various		
1052	Message item identifier	C an..35			
1054	Message sub-item identifier	C n..6			
C853	Error segment point details	C			
9166	Segment tag identifier	C an..3			
1050	Sequence position identifier	C an..10	POINTER	Sequence number	R n..5
1159	Sequence identifier source code	C an..3			

12 **SG16** **ERP-ELU** **C** **999**
ELU **Data element usage details** **C** **99**

EDIFACT			Functional Mapping		
9162	Data element tag identifier	M an..4	POINTER	Tag identifier	R an..4
			Code list: CL19	Pointer code (codes to be defined)	
7299	Requirement designator code	C an..3			
1050	Sequence position identifier	C an..10			
4513	Maintenance operation code	C an..3			
6176	Occurrences maximum number	C n..7			
9453	Code value source code	C an..3			

9285	Validation criteria code	C	an..3
9175	Data element usage type code	C	an..3

13	SG22	GIR-LOC-VLI-DTM-SG23	C	9
	GIR	Related identification numbers	M	1
EDIFACT			Functional Mapping	
7297	Set type code qualifier	M	an..3	Code value: 9 Financial security
C206	Identification number	M		
7402	Object identifier	M	an..35	GUARANTEE Reference R an..35
7405	Object identification code qualifier	C	an..3	
4405	Status description code	C	an..3	
C206	Identification number	C		
7402	Object identifier	M	an..35	
7405	Object identification code qualifier	C	an..3	
4405	Status description code	C	an..3	
C206	Identification number	C		
7402	Object identifier	M	an..35	
7405	Object identification code qualifier	C	an..3	
4405	Status description code	C	an..3	
C206	Identification number	C		
7402	Object identifier	M	an..35	
7405	Object identification code qualifier	C	an..3	
4405	Status description code	C	an..3	
C206	Identification number	C		
7402	Object identifier	M	an..35	
7405	Object identification code qualifier	C	an..3	
4405	Status description code	C	an..3	

15	UNS	Section control	M	1
EDIFACT			Functional Mapping	
0081	Section identification	M	a1	Code value: D - Always required - Header/detail section separation

MAPPING COMMENT: Always required

16	HYN	Hierarchy information	M	1
EDIFACT			Functional Mapping	
7173	Hierarchy object code qualifier	M	an..3	Code value: 3 - Always required - No hierarchy
7171	Hierarchical structure relationship code	C	an..3	
1229	Action code	C	an..3	
C212	Item number identification	C		
7140	Item identifier	C	an..35	
7143	Item type identification code	C	an..3	
1131	Code list identification code	C	an..17	
3055	Code list responsible agency code	C	an..3	
7166	Hierarchical structure parent identifier	C	an..35	

MAPPING COMMENT: Always required

SG133 CNI-RFF-GEI-STS-MEA-QTY-MOA-IFD-HAN-SG134-SG136-SG137-SG141-SG143-SG146-SG147-SG148-SG149-SG150-SG151-SG155-SG170-SG216 **C** **9999**

17 CNI Consignment information **M** **1**

EDIFACT			Functional Mapping		
1490	Consolidation item number	C n..5	CONSIGNMENT	Sequence number	R n..5
C503	Document/message details	C			
1004	Document identifier	C an..70			
1373	Document status code	C an..3			
1366	Document source description	C an..70			
3453	Language name code	C an..3			
1056	Version identifier	C an..9			
1060	Revision identifier	C an..6			
1312	Consignment load sequence identifier	C n..4			

SG134 NAD-DTM-SG135 **C** **99**

18 NAD Name and address **M** **1**

EDIFACT			Functional Mapping		
3035	Party function code qualifier	M an..3	Code value: NI	Notify party	
C082	Party identification details	C			
3039	Party identifier	M an..35	NOTIFYPARTY	Code	D an..17
1131	Code list identification code	C an..17			
3055	Code list responsible agency code	C an..3			
C058	Name and address	C			
3124	Name and address description	M an..35			
3124	Name and address description	C an..35			
3124	Name and address description	C an..35			
3124	Name and address description	C an..35			
3124	Name and address description	C an..35			
C080	Party name	C			
3036	Party name	M an..70	NOTIFYPARTY	Name	D an..70
3036	Party name	C an..70		- continued 35 -	
3036	Party name	C an..70			
3036	Party name	C an..70			
3036	Party name	C an..70			
3045	Party name format code	C an..3			
C059	Street	C			
3042	Street and number or post office box identifier	M an..35	ADDRESS	Street and number/P.O. Box	R an..70
3042	Street and number or post office box identifier	C an..35		- continued 35 -	
3042	Street and number or post office box identifier	C an..35			
3042	Street and number or post office box identifier	C an..35			
3164	City name	C an..35	ADDRESS	City name	R an..35
C819	Country subdivision details	C			
3229	Country subdivision identifier	C an..9			
1131	Code list identification code	C an..17			
3055	Code list responsible agency code	C an..3			
3228	Country subdivision name	C an..70			

3251	Postal identification code	C	an..17	ADDRESS	Postcode identification	R	an..9
3207	Country identifier	C	an..3	ADDRESS	Country, coded	R	a2
				Code list: CL04	Country name code		
				Code value: Various			

19 SG136 LOC DTM Place/location identification C 99
M 1

EDIFACT				Functional Mapping			
3227	Location function code qualifier	M	an..3	Code value: 5	Place of departure		
C517	Location identification	C					
3225	Location identifier	C	an..35	CUSTOMSOFFICEOFDEP ARTURE	Code	R	an..17
				Code list: CL13	Customs offices database (to be developed)		
1131	Code list identification code	C	an..17				
3055	Code list responsible agency code	C	an..3	Code value: 6	UN/ECE (United Nations - Economic Commission for Europe)		
3224	Location name	C	an..256				
C519	Related location one identification	C					
3223	First related location identifier	C	an..35				
1131	Code list identification code	C	an..17				
3055	Code list responsible agency code	C	an..3				
3222	First related location name	C	an..70				
C553	Related location two identification	C					
3233	Second related location identifier	C	an..35				
1131	Code list identification code	C	an..17				
3055	Code list responsible agency code	C	an..3				
3232	Second related location name	C	an..70				
5479	Relation code	C	an..3				

20 SG136 LOC DTM Place/location identification C 99
M 1

EDIFACT				Functional Mapping			
3227	Location function code qualifier	M	an..3	Code value: 8	Place of destination		
C517	Location identification	C					
3225	Location identifier	C	an..35	CUSTOMSOFFICEOFDEST INATION	Code	R	an..17
				Code list: CL13	Customs offices database (to be developed)		
1131	Code list identification code	C	an..17				
3055	Code list responsible agency code	C	an..3	Code value: 6	UN/ECE (United Nations - Economic Commission for Europe)		
3224	Location name	C	an..256				
C519	Related location one identification	C					
3223	First related location identifier	C	an..35				
1131	Code list identification code	C	an..17				
3055	Code list responsible agency code	C	an..3				
3222	First related location name	C	an..70				
C553	Related location two identification	C					
3233	Second related location identifier	C	an..35				

1131	Code list identification code	C	an..17
3055	Code list responsible agency code	C	an..3
3232	Second related location name	C	an..70
5479	Relation code	C	an..3

21 SG137 DOC **DOC-RFF-DTM-MOA-ALI-QTY-TSR-SG138-SG140** **C 99**
DOC Document/message details **M 1**

EDIFACT				Functional Mapping			
C002	Document/message name	M					
1001	Document name code	C	an..3	ATTACHEDDOCUMENTS	Type, coded	R	an..3
				Code list:	CL06		Document name code
				Code value:	Various		
1131	Code list identification code	C	an..17				
3055	Code list responsible agency code	C	an..3				
1000	Document name	C	an..35				
C503	Document/message details	C					
1004	Document identifier	C	an..70	ATTACHEDDOCUMENTS	Number	R	an..35
1373	Document status code	C	an..3				
1366	Document source description	C	an..70				
3453	Language name code	C	an..3				
1056	Version identifier	C	an..9				
1060	Revision identifier	C	an..6				
3153	Communication medium type code	C	an..3				
1220	Document copies required quantity	C	n..2				
1218	Document originals required quantity	C	n..2				

22 SG137 DTM **DOC-RFF-DTM-MOA-ALI-QTY-TSR-SG138-SG140** **C 99**
DTM Date/time/period **C 99**

EDIFACT				Functional Mapping			
C507	Date/time/period	M					
2005	Date or time or period function code qualifier	M	an..3	Code value:	137		Document issue date time
2380	Date or time or period text	C	an..35	ATTACHEDDOCUMENTS	Issuing date	R	an..17
2379	Date or time or period format code	C	an..3	Code value:	304		CCYYMMDDHHMMSSZZ

23 SG151 EQD **EQD-SEQ-GEI-SEL-SG152-SG154** **C 99**
EQD Equipment details **M 1**

EDIFACT				Functional Mapping			
8053	Equipment type code qualifier	M	an..3	Code value:	Various		
C237	Equipment identification	C					
8260	Equipment identifier	C	an..17	TRANSPORTEQUIPMENT	Identification	R	an..17
1131	Code list identification code	C	an..17				
3055	Code list responsible agency code	C	an..3				
3207	Country identifier	C	an..3				
C224	Equipment size and type	C					
8155	Equipment size and type description code	C	an..10	TRANSPORTEQUIPMENT	Size and type identification	R	an..4
				Code list:	CL01		Equipment size and type description code
				Code value:	Various		
1131	Code list identification code	C	an..17				

3055	Code list responsible agency code	C	an..3	
8154	Equipment size and type description	C	an..35	
8077	Equipment supplier code	C	an..3	
8249	Equipment status code	C	an..3	
8169	Full or empty indicator code	C	an..3	
4233	Marking instructions code	C	an..3	

24 SG151 EQD-SEQ-GEI-SEL-SG152-SG154 C 99
SEQ Sequence details M 1

EDIFACT				Functional Mapping	
1229	Action code	C	an..3		
C286	Sequence information	C			
1050	Sequence position identifier	M	an..10	TRANSPORTEQUIPMENT	Sequence number R n..5
1159	Sequence identifier source code	C	an..3		
1131	Code list identification code	C	an..17		
3055	Code list responsible agency code	C	an..3		

25 SG151 EQD-SEQ-GEI-SEL-SG152-SG154 C 99
SEL Seal number C 99

EDIFACT				Functional Mapping	
9308	Transport unit seal identifier	C	an..35	SEAL	Seal number R an..35
C215	Seal issuer	C			
9303	Sealing party name code	C	an..3		
1131	Code list identification code	C	an..17		
3055	Code list responsible agency code	C	an..3		
9302	Sealing party name	C	an..35		
4517	Seal condition code	C	an..3		
C208	Identity number range	C			
7402	Object identifier	M	an..35		
7402	Object identifier	C	an..35		
4525	Seal type code	C	an..3	SEAL	Seal type code O an..3

26 SG155 TDT-DTM-RFF-QTY-MEA-MOA-POC-DIM-FTX-GDS-STG-GPO-SG156-SG157-SG160-SG166 C 99
TDT Transport information M 1

EDIFACT				Functional Mapping	
8051	Transport stage code qualifier	M	an..3	Code value: 30	On-carriage transport
8028	Means of transport journey identifier	C	an..17	TRANSPORTMEANS	Conveyance reference number O an..17
C220	Mode of transport	C			
8067	Transport mode name code	C	an..3		
8066	Transport mode name	C	an..17		
C001	Transport means	C			
8179	Transport means description code	C	an..8	TRANSPORTMEANS Code list: CL05 Code value: Various	Type, coded R an..4 Transport means description code
1131	Code list identification code	C	an..17		
3055	Code list responsible agency code	C	an..3		
8178	Transport means description	C	an..17		
C040	Carrier	C			
3127	Carrier identifier	C	an..17		
1131	Code list identification code	C	an..17		
3055	Code list responsible agency code	C	an..3		

3126	Carrier name	C	an..35				
8101	Transit direction indicator code	C	an..3				
C401	Excess transportation information	C					
8457	Excess transportation reason code	M	an..3				
8459	Excess transportation responsibility code	M	an..3				
7130	Customer shipment authorisation identifier	C	an..17				
C222	Transport identification	C					
8213	Transport means identification name identifier	C	an..35				
1131	Code list identification code	C	an..17				
3055	Code list responsible agency code	C	an..3				
8212	Transport means identification name	C	an..70	TRANSPORTMEANS	Identification	R	an..25
8453	Transport means nationality code	C	an..3	TRANSPORTMEANS Code list: CL04 Code value: Various	Nationality Country name code	R	a2
8281	Transport means ownership indicator code	C	an..3				

27 **SG156** **LOC-DTM** **C** **99**
LOC **Place/location identification** **M** **1**

EDIFACT				Functional Mapping			
3227	Location function code qualifier	M	an..3	Code value: 49	Transit country		
C517	Location identification	C					
3225	Location identifier	C	an..35	COUNTRYOFROUTING Code list: CL04	Country, coded Country name code	R	a2
1131	Code list identification code	C	an..17				
3055	Code list responsible agency code	C	an..3				
3224	Location name	C	an..256				
C519	Related location one identification	C					
3223	First related location identifier	C	an..35				
1131	Code list identification code	C	an..17				
3055	Code list responsible agency code	C	an..3				
3222	First related location name	C	an..70				
C553	Related location two identification	C					
3233	Second related location identifier	C	an..35				
1131	Code list identification code	C	an..17				
3055	Code list responsible agency code	C	an..3				
3232	Second related location name	C	an..70				
5479	Relation code	C	an..3				

28 **SG160** **DOC-RFF-DTM-MOA-ALI-QTY-TSR-SG161-SG163-SG164** **C** **99**
DOC **Document/message details** **M** **1**

EDIFACT				Functional Mapping			
C002	Document/message name	M					

1001	Document name code	C	an..3	CERTIFICATEOFAPPROV AL	Type, coded	R	an..3
				Code list: CL06	Document name code		
				Code value: Various			
1131	Code list identification code	C	an..17				
3055	Code list responsible agency code	C	an..3				
1000	Document name	C	an..35				
C503	Document/message details	C					
1004	Document identifier	C	an..70	CERTIFICATEOFAPPROV AL	Number	R	an..35
1373	Document status code	C	an..3				
1366	Document source description	C	an..70				
3453	Language name code	C	an..3				
1056	Version identifier	C	an..9				
1060	Revision identifier	C	an..6				
3153	Communication medium type code	C	an..3				
1220	Document copies required quantity	C	n..2				
1218	Document originals required quantity	C	n..2				

29 SG160 DOC-RFF-DTM-MOA-ALI-QTY-TSR-SG161-SG163-SG164 C 99
DTM Date/time/period C 99

EDIFACT				Functional Mapping			
C507	Date/time/period	M					
2005	Date or time or period function code qualifier	M	an..3	Code value: 137	Document issue date time		
2380	Date or time or period text	C	an..35	CERTIFICATEOFAPPROV AL	Date	R	an..17
2379	Date or time or period format code	C	an..3	Code value: 304	CCYYMMDDHHMMSSZZ		

SG170 SEQ-GEI-STS-RFF-IFD-SG171-SG173-SG174-SG180-SG182-SG185-SG186-SG187-SG188- C 9999
SG192

30 SEQ Sequence details M 1

EDIFACT				Functional Mapping			
1229	Action code	C	an..3				
C286	Sequence information	C					
1050	Sequence position identifier	M	an..10	CONSIGNMENTITEM	Sequence number	R	n..5
1159	Sequence identifier source code	C	an..3				
1131	Code list identification code	C	an..17				
3055	Code list responsible agency code	C	an..3				

SG170 SEQ-GEI-STS-RFF-IFD-SG171-SG173-SG174-SG180-SG182-SG185-SG186-SG187-SG188- C 9999
SG192

31 RFF Reference C 99

EDIFACT				Functional Mapping			
C506	Reference	M					
1153	Reference code qualifier	M	an..3	Code value: UCN	Unique consignment reference number		
1154	Reference identifier	C	an..70	UCR	Identifier	O	an..35
1156	Document line identifier	C	an..6				
1056	Version identifier	C	an..9				
1060	Revision identifier	C	an..6				

32		SG171	NAD-DTM-SG172		C	99
		NAD	Name and address		M	1
EDIFACT				Functional Mapping		
3035	Party function code qualifier	M	an..3	Code value: CN	Consignee	
C082	Party identification details	C				
3039	Party identifier	M	an..35	CONSIGNEE	Code	D an..17
1131	Code list identification code	C	an..17			
3055	Code list responsible agency code	C	an..3			
C058	Name and address	C				
3124	Name and address description	M	an..35			
3124	Name and address description	C	an..35			
3124	Name and address description	C	an..35			
3124	Name and address description	C	an..35			
3124	Name and address description	C	an..35			
C080	Party name	C				
3036	Party name	M	an..70	CONSIGNEE	Name	D an..70
3036	Party name	C	an..70		- continued 35 -	
3036	Party name	C	an..70			
3036	Party name	C	an..70			
3036	Party name	C	an..70			
3045	Party name format code	C	an..3			
C059	Street	C				
3042	Street and number or post office box identifier	M	an..35	ADDRESS	Street and number/P.O. Box	R an..70
3042	Street and number or post office box identifier	C	an..35		- continued 35 -	
3042	Street and number or post office box identifier	C	an..35			
3042	Street and number or post office box identifier	C	an..35			
3164	City name	C	an..35	ADDRESS	City name	R an..35
C819	Country subdivision details	C				
3229	Country subdivision identifier	C	an..9			
1131	Code list identification code	C	an..17			
3055	Code list responsible agency code	C	an..3			
3228	Country subdivision name	C	an..70			
3251	Postal identification code	C	an..17	ADDRESS	Postcode identification	R an..9
3207	Country identifier	C	an..3	ADDRESS	Country, coded	R a2
				Code list: CL04	Country name code	
				Code value: Various		

33		SG171	NAD-DTM-SG172		C	99
		NAD	Name and address		M	1
EDIFACT				Functional Mapping		
3035	Party function code qualifier	M	an..3	Code value: CZ	Consignor	
C082	Party identification details	C				
3039	Party identifier	M	an..35	CONSIGNOR	Code	D an..17
1131	Code list identification code	C	an..17			
3055	Code list responsible agency code	C	an..3			
C058	Name and address	C				

3124	Name and address description	M	an..35					
3124	Name and address description	C	an..35					
3124	Name and address description	C	an..35					
3124	Name and address description	C	an..35					
3124	Name and address description	C	an..35					
C080	Party name	C						
3036	Party name	M	an..70	CONSIGNOR	Name		D	an..70
3036	Party name	C	an..70		- continued 35 -			
3036	Party name	C	an..70					
3036	Party name	C	an..70					
3036	Party name	C	an..70					
3045	Party name format code	C	an..3					
C059	Street	C						
3042	Street and number or post office box identifier	M	an..35	ADDRESS	Street and number/P.O. Box		R	an..70
3042	Street and number or post office box identifier	C	an..35		- continued 35 -			
3042	Street and number or post office box identifier	C	an..35					
3042	Street and number or post office box identifier	C	an..35					
3164	City name	C	an..35	ADDRESS	City name		R	an..35
C819	Country subdivision details	C						
3229	Country subdivision identifier	C	an..9					
1131	Code list identification code	C	an..17					
3055	Code list responsible agency code	C	an..3					
3228	Country subdivision name	C	an..70					
3251	Postal identification code	C	an..17	ADDRESS	Postcode identification		R	an..9
3207	Country identifier	C	an..3	ADDRESS	Country, coded		R	a2
				Code list: CL04	Country name code			
				Code value: Various				

34	SG171	NAD-DTM-SG172					C	99
	NAD	Name and address					M	1
EDIFACT				Functional Mapping				
3035	Party function code qualifier	M	an..3	Code value: DP	Delivery party			
C082	Party identification details	C						
3039	Party identifier	M	an..35					
1131	Code list identification code	C	an..17					
3055	Code list responsible agency code	C	an..3					
C058	Name and address	C						
3124	Name and address description	M	an..35					
3124	Name and address description	C	an..35					
3124	Name and address description	C	an..35					
3124	Name and address description	C	an..35					
3124	Name and address description	C	an..35					
3124	Name and address description	C	an..35					
C080	Party name	C						
3036	Party name	M	an..70	DELIVERYDESTINATION	Name		R	an..70

3036	Party name	C	an..70						
3036	Party name	C	an..70						
3036	Party name	C	an..70						
3036	Party name	C	an..70						
3045	Party name format code	C	an..3						
C059	Street	C							
3042	Street and number or post office box identifier	M	an..35	ADDRESS		Street and number/P.O. Box	R	an..70	
3042	Street and number or post office box identifier	C	an..35						
3042	Street and number or post office box identifier	C	an..35						
3042	Street and number or post office box identifier	C	an..35						
3164	City name	C	an..35	ADDRESS		City name	R	an..35	
C819	Country subdivision details	C							
3229	Country subdivision identifier	C	an..9						
1131	Code list identification code	C	an..17						
3055	Code list responsible agency code	C	an..3						
3228	Country subdivision name	C	an..70						
3251	Postal identification code	C	an..17	ADDRESS		Postcode identification	R	an..9	
3207	Country identifier	C	an..3	ADDRESS		Country, coded	R	a2	
				Code list:	CL04	Country name code			
				Code value:	Various				

	SG180	RCS-FTX-DTM-GEI-ALI-SG181		C	99
35	RCS	Requirements and conditions		M	1

EDIFACT			Functional Mapping		
7293	Sector area identification code qualifier	M	an..3	Code value: 15	- Always required - Government
C550	Requirement/condition identification	C			
7295	Requirement or condition description identifier	M	an..17		
1131	Code list identification code	C	an..17		
3055	Code list responsible agency code	C	an..3		
7294	Requirement or condition description	C	an..35		
1229	Action code	C	an..3		
3207	Country identifier	C	an..3		

MAPPING COMMENT: This segment is required if other information from this segment group is used (trigger segment)

	SG180	RCS-FTX-DTM-GEI-ALI-SG181		C	99
36	FTX	Free text		C	9

EDIFACT			Functional Mapping		
4451	Text subject code qualifier	M	an..3	Code value: ACB	Additional information
4453	Free text function code	C	an..3		
C107	Text reference	C			
4441	Free text description code	M	an..17		
1131	Code list identification code	C	an..17		
3055	Code list responsible agency code	C	an..3		
C108	Text literal	C			
4440	Free text	M	an..512	ADDITIONALINFORMATION	Remarks
4440	Free text	C	an..512		R
4440	Free text	C	an..512		an..512
4440	Free text	C	an..512		

4440	Free text	C	an..512	
3453	Language name code	C	an..3	
4447	Free text format code	C	an..3	

37 SG185 MEA-QTY MEA Measurements C 99 M 1

EDIFACT				Functional Mapping	
6311	Measurement purpose code qualifier	M	an..3	Code value: AAE	Measurement
C502	Measurement details	C			
6313	Measured attribute code	C	an..3	Code value: GW	Gross weight, maximum
6321	Measurement significance code	C	an..3		
6155	Non-discrete measurement name code	C	an..17		
6154	Non-discrete measurement name	C	an..70		
C174	Value/range	C			
6411	Measurement unit code	M	an..8	Code value: KGM	kilogram
6314	Measure	C	an..18	GOODSMEASURE	Gross weight
6162	Range minimum quantity	C	n..18		
6152	Range maximum quantity	C	n..18		
6432	Significant digits quantity	C	n..2		
7383	Surface or layer code	C	an..3		
					R n..16,6

38 SG186 PAC-PCI-FTX-GEI-DIM-MEA PAC Package C 999 M 1

EDIFACT				Functional Mapping	
7224	Package quantity	C	n..8	PACKAGING	Number of packages
C531	Packaging details	C			D n..8
7075	Packaging level code	C	an..3		
7233	Packaging related description code	C	an..3		
7073	Packaging terms and conditions code	C	an..3		
C202	Package type	C			
7065	Package type description code	C	an..17	PACKAGING	Type, coded
				Code list: CL07	Package type description code
				Code value: Various	R an..2
1131	Code list identification code	C	an..17		
3055	Code list responsible agency code	C	an..3		
7064	Type of packages	C	an..35		
C402	Package type identification	C			
7077	Description format code	M	an..3		
7064	Type of packages	M	an..35		
7143	Item type identification code	C	an..3		
7064	Type of packages	C	an..35		
7143	Item type identification code	C	an..3		
C532	Returnable package details	C			
8395	Returnable package freight payment responsibility code	C	an..3		
8393	Returnable package load contents code	C	an..3		

39 SG186 PAC-PCI-FTX-GEI-DIM-MEA PCI Package identification C 999 C 99

EDIFACT				Functional Mapping	
4233	Marking instructions code	C	an..3		
C210	Marks & labels	C			

7102	Shipping marks description	M an..35	PACKAGING	Marks and numbers	O an..512	
7102	Shipping marks description	C an..35				- continued 35 -
7102	Shipping marks description	C an..35				- continued 35 -
7102	Shipping marks description	C an..35				- continued 35 -
7102	Shipping marks description	C an..35				- continued 35 -
7102	Shipping marks description	C an..35				- continued 35 -
7102	Shipping marks description	C an..35				- continued 35 -
7102	Shipping marks description	C an..35				- continued 35 -
7102	Shipping marks description	C an..35				- continued 35 -
7102	Shipping marks description	C an..35				- continued 35 -
7102	Shipping marks description	C an..35				- truncated 162 -
8169	Full or empty indicator code	C an..3				
C827	Type of marking	C				
7511	Marking type code	M an..3				
1131	Code list identification code	C an..17				
3055	Code list responsible agency code	C an..3				

40	SG188	EQD-SEQ-GEI-SEL-SG189-SG191	C	99
	EQD	Equipment details	M	1
EDIFACT			Functional Mapping	
8053	Equipment type code qualifier	M an..3	Code value: Various	
C237	Equipment identification	C	TRANSPORTEQUIPMENT Identification	R an..17
8260	Equipment identifier	C an..17		
1131	Code list identification code	C an..17		
3055	Code list responsible agency code	C an..3		
3207	Country identifier	C an..3		
C224	Equipment size and type	C		
8155	Equipment size and type description code	C an..10		
1131	Code list identification code	C an..17		
3055	Code list responsible agency code	C an..3		
8154	Equipment size and type description	C an..35		
8077	Equipment supplier code	C an..3		
8249	Equipment status code	C an..3		
8169	Full or empty indicator code	C an..3		
4233	Marking instructions code	C an..3		

41	SG192	GID-IMD-APP-FTX-RFF-DTM-GIR-GIN-GEI-PRC-MEA-MOA-CDI-PGI-TCC-IFD-CNT-SG193-SG195-SG196-SG200-SG202-SG203-SG204-SG207-SG212-SG213-SG215	C	99
	GID	Goods item details	M	1
EDIFACT			Functional Mapping	
1496	Goods item number	C an..6	Always -1-	
C213	Number and type of packages	C	Always -1-	
7224	Package quantity	C n..8		
7065	Package type description code	C an..17		
1131	Code list identification code	C an..17		
3055	Code list responsible agency code	C an..3		
7064	Type of packages	C an..35		
7233	Packaging related description code	C an..3		
C213	Number and type of packages	C		
7224	Package quantity	C n..8		

7065	Package type description code	C	an..17
1131	Code list identification code	C	an..17
3055	Code list responsible agency code	C	an..3
7064	Type of packages	C	an..35
7233	Packaging related description code	C	an..3
C213	Number and type of packages	C	
7224	Package quantity	C	n..8
7065	Package type description code	C	an..17
1131	Code list identification code	C	an..17
3055	Code list responsible agency code	C	an..3
7064	Type of packages	C	an..35
7233	Packaging related description code	C	an..3
C213	Number and type of packages	C	
7224	Package quantity	C	n..8
7065	Package type description code	C	an..17
1131	Code list identification code	C	an..17
3055	Code list responsible agency code	C	an..3
7064	Type of packages	C	an..35
7233	Packaging related description code	C	an..3
C213	Number and type of packages	C	
7224	Package quantity	C	n..8
7065	Package type description code	C	an..17
1131	Code list identification code	C	an..17
3055	Code list responsible agency code	C	an..3
7064	Type of packages	C	an..35
7233	Packaging related description code	C	an..3

SG192 **GID-IMD-APP-FTX-RFF-DTM-GIR-GIN-GEI-PRC-MEA-MOA-CDI-PGI-TCC-IFD-CNT-SG193-SG195-SG196-SG200-SG202-SG203-SG204-SG207-SG212-SG213-SG215** **C** **99**

42 **FTX** **Free text** **C** **99**

EDIFACT			Functional Mapping		
4451	Text subject code qualifier	M	an..3	Code value: AAA	Goods item description
4453	Free text function code	C	an..3		
C107	Text reference	C			
4441	Free text description code	M	an..17		
1131	Code list identification code	C	an..17		
3055	Code list responsible agency code	C	an..3		
C108	Text literal	C			
4440	Free text	M	an..512	GOODS	Description D an..256
4440	Free text	C	an..512		
4440	Free text	C	an..512		
4440	Free text	C	an..512		
4440	Free text	C	an..512		
3453	Language name code	C	an..3		
4447	Free text format code	C	an..3		

	SG192	GID-IMD-APP-FTX-RFF-DTM-GIR-GIN-GEI-PRC-MEA-MOA-CDI-PGI-TCC-IFD-CNT-SG193-SG195-SG196-SG200-SG202-SG203-SG204-SG207-SG212-SG213-SG215	C	99
43	TCC	Charge/rate calculations	C	99

EDIFACT			Functional Mapping		
C200	Charge	C			
8023	Freight and other charges description identifier	C an..17			
1131	Code list identification code	C an..17			
3055	Code list responsible agency code	C an..3			
8022	Freight and other charges description	C an..26			
4237	Payment arrangement code	C an..3			
7140	Item identifier	C an..35			
C203	Rate/tariff class	C			
5243	Rate or tariff class description code	M an..9			
1131	Code list identification code	C an..17			
3055	Code list responsible agency code	C an..3			
5242	Rate or tariff class description	C an..35			
5275	Supplementary rate or tariff code	C an..6			
1131	Code list identification code	C an..17			
3055	Code list responsible agency code	C an..3			
5275	Supplementary rate or tariff code	C an..6			
1131	Code list identification code	C an..17			
3055	Code list responsible agency code	C an..3			
C528	Commodity/rate detail	C			
7357	Commodity identification code	C an..18	CLASSIFICATION	Code	R an..18
1131	Code list identification code	C an..17	CLASSIFICATION	Type	R an..3
			Code list: CL03	Item type identification code	
			Code value: HS	Harmonised system	
3055	Code list responsible agency code	C an..3			
C554	Rate/tariff class detail	C			
5243	Rate or tariff class description code	C an..9			
1131	Code list identification code	C an..17			
3055	Code list responsible agency code	C an..3			

44	UNS	Section control	M	1
EDIFACT			Functional Mapping	
0081	Section identification	M a1		
			Code value: S	- Always required - Detail/summary section separation

MAPPING COMMENT: Always required

45	CNT	Control total	C	9
EDIFACT			Functional Mapping	
C270	Control	M		
6069	Control total type code qualifier	M an..3	Code value: 7	Total gross weight
6066	Control total quantity	M n..18	ADVANCEDCARGOINFORMATION	Total gross weight
				O n..16,6
6411	Measurement unit code	C an..8	Code value: Various	

46	UNT	Message trailer	M	1
EDIFACT			Functional Mapping	
0074	Number of segments in the message	M n..6		
0062	Message reference number	M an..14		

4.2.3.2.2 E10 - Advanced cargo information results

a. Introduction

This message is a response to message E9. It confirms the reception of or indicates the errors in the declaration.

b. Entities

See Chapter 3.2.5.1.10.b.

c. Entities and attributes

See Chapter 3.2.5.1.10.d.

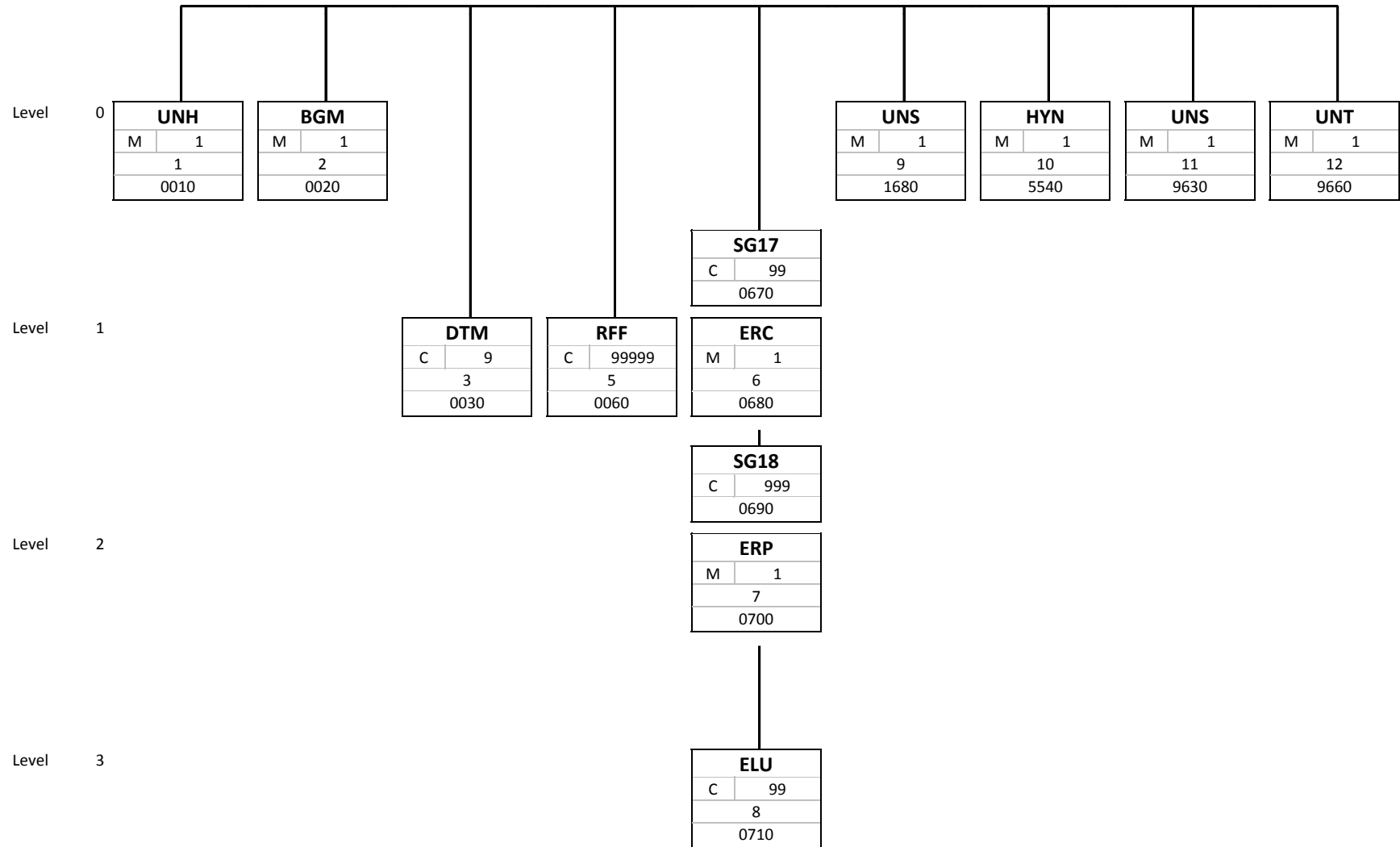
d. Rules and conditions

See Chapter 3.2.6.

e. Cross Reference

ENTITIES / ATTRIBUTES	CODE LISTS	FORMAT	STATUS	MAPPING TO EDIFACT GOVCBR
Message				
Response				
Functional Reference		an..35	R	GOVCBR.RFF.C506.1154(0060:010:02)
Overall Declaration				
AdvancedCargoInformation				
Reference		an..35	R	GOVCBR.BGM.C106.1004(0020:020:01)
Type, coded	CL26	an..3	R	GOVCBR.BGM.C002.1001(0020:010:01)
Acceptance date		an..17	D	GOVCBR.DTM[D_2005="148"].C507.2380(0030:010:02)
Message function, coded	CL16	n..2	R	GOVCBR.BGM.1225(0020:030)
Rejection date		an..17	D	GOVCBR.DTM[D_2005="226"].C507.2380(0030:010:02)
Error				
Error, coded	CL99	an..8	R	GOVCBR.SG17.ERC.C901.9321(0680:010:01)
Pointer				
Sequence number		n..5	R	GOVCBR.SG17.SG18.ERP.C853.1050(0700:020:02)
Document/message section, coded	CL18	an..3	R	GOVCBR.SG17.SG18.ERP.C701.1049(0700:010:01)
Tag identifier	CL19	an..4	R	GOVCBR.SG17.SG18.ELU.9162(0710:010)

f. Branching Diagram



g. Segment descriptions

1 UNH Message header			M	1
EDIFACT			Functional Mapping	
0062	Message reference number	M an..14	Message reference number (M, an..14)	
S009	Message identifier	M		
0065	Message type	M an..6	Code value: GOVCBR	Government cross border regulatory message
0052	Message version number	M an..3	Code value: D	Draft version/UN/EDIFACT Directory
0054	Message release number	M an..3	Code value: 10A	Release 2010 - A
0051	Controlling agency	M an..2	Code value: UN	UN/CEFACT
0057	Association assigned code	C an..6		
0068	Common access reference	C an..35		
S010	Status of the transfer	C		
0070	Sequence of transfers	M n..2		
0073	First and last transfer	C a1		
2 BGM Beginning of message			M	1
EDIFACT			Functional Mapping	
C002	Document/message name	C		
1001	Document name code	C an..3	MESSAGE	Type, coded R an..3
			Code list: CL26	Message sub types
			Code value: E10	Advanced cargo information results
1131	Code list identification code	C an..17		
3055	Code list responsible agency code	C an..3	Code value: 6	UN/ECE (United Nations - Economic Commission for Europe)
1000	Document name	C an..35		
C106	Document/message identification	C		
1004	Document identifier	C an..70	ADVANCEDCARGOINFORMATION	Reference R an..35
1056	Version identifier	C an..9		
1060	Revision identifier	C an..6		
1225	Message function code	C an..3	MESSAGE	Message function, coded R n..2
			Code list: CL16	Message function code
			Code value: 27	Not accepted
			44	Accepted without reserves
4343	Response type code	C an..3		
3 DTM Date/time/period			C	9
EDIFACT			Functional Mapping	
C507	Date/time/period	M		
2005	Date or time or period function code qualifier	M an..3	Code value: 148	Goods declaration document acceptance date time
2380	Date or time or period text	C an..35	ADVANCEDCARGOINFORMATION	Acceptance date D an..17
2379	Date or time or period format code	C an..3	Code value: 304	CCYYMMDDHHMMSSZZ
4 DTM Date/time/period			C	9
EDIFACT			Functional Mapping	
C507	Date/time/period	M		
2005	Date or time or period function code qualifier	M an..3	Code value: 226	Discrepancy date/time
2380	Date or time or period text	C an..35	ADVANCEDCARGOINFORMATION	Rejection date D an..17
2379	Date or time or period format code	C an..3	Code value: 304	CCYYMMDDHHMMSSZZ
5 RFF Reference			C	99999
EDIFACT			Functional Mapping	
C506	Reference	M		
1153	Reference code qualifier	M an..3	Code value: AIM	Individual transaction reference number

1154	Reference identifier	C	an..70	ADVANCEDCARGOINFO RMATION	Functional Reference	R	an..35
1156	Document line identifier	C	an..6				
1056	Version identifier	C	an..9				
1060	Revision identifier	C	an..6				

6	SG17 ERC	ERC-SG18 Application error information	C M	99 1
----------	---------------------------	---	----------------------	-----------------------

EDIFACT			Functional Mapping				
C901	Application error detail	M					
9321	Application error code	M	an..8	ERROR	Error, coded	R	an..8
				Code list: CL99	Error code (to be developed)		
1131	Code list identification code	C	an..17				
3055	Code list responsible agency code	C	an..3	Code value: 6	UN/ECE (United Nations - Economic Commission for Europe)		

7	SG18 ERP	ERP-ELU Error point details	C M	999 1
----------	---------------------------	--	----------------------	------------------------

EDIFACT			Functional Mapping				
C701	Error point details	C					
1049	Message section code	C	an..3	POINTER	Document/message section, coded	R	an..3
				Code list: CL18	Message section code (codes to be defined)		
				Code value: Various			
1052	Message item identifier	C	an..35				
1054	Message sub-item identifier	C	n..6				
C853	Error segment point details	C					
9166	Segment tag identifier	C	an..3				
1050	Sequence position identifier	C	an..10	POINTER	Sequence number	R	n..5
1159	Sequence identifier source code	C	an..3				

8	SG18 ELU	ERP-ELU Data element usage details	C C	999 99
----------	---------------------------	---	----------------------	-------------------------

EDIFACT			Functional Mapping				
9162	Data element tag identifier	M	an..4	POINTER	Tag identifier	R	an..4
				Code list: CL19	Pointer code (codes to be defined)		
7299	Requirement designator code	C	an..3				
1050	Sequence position identifier	C	an..10				
4513	Maintenance operation code	C	an..3				
6176	Occurrences maximum number	C	n..7				
9453	Code value source code	C	an..3				
9285	Validation criteria code	C	an..3				
9175	Data element usage type code	C	an..3				

9	UNS	Section control	M	1
----------	------------	------------------------	----------	----------

EDIFACT			Functional Mapping		
0081	Section identification	M	a1	Code value: D	Header/detail section separation

MAPPING COMMENT: Always required

10	HYN	Hierarchy information	M	1
-----------	------------	------------------------------	----------	----------

EDIFACT			Functional Mapping		
7173	Hierarchy object code qualifier	M	an..3	Code value: 3	No hierarchy
7171	Hierarchical structure relationship code	C	an..3		
1229	Action code	C	an..3		
C212	Item number identification	C			
7140	Item identifier	C	an..35		

7143	Item type identification code	C	an..3
1131	Code list identification code	C	an..17
3055	Code list responsible agency code	C	an..3
7166	Hierarchical structure parent identifier	C	an..35

MAPPING COMMENT: Always required

11 UNS Section control M 1

EDIFACT		Functional Mapping	
0081	Section identification M a1	Code value: S	Detail/summary section separation

MAPPING COMMENT: Always required

12 UNT Message trailer M 1

EDIFACT		Functional Mapping	
0074	Number of segments in the message M n..6		
0062	Message reference number M an..14		

4.3. System architecture

4.3.1. eTIR international system

4.3.1.1. Components and interfaces

4.3.1.1.1. eTIR web services

4.3.1.1.2. Guarantee chain web services

4.3.1.1.3. Customs authorities web services

4.3.1.1.4. ITDB web services

4.3.1.2. Customs offices database

4.3.1.2.1. Class diagram

Annex

A. Functional fall-backs

A.1. Detailed activity diagrams

A.2. Detailed sequence diagrams

A.3. Fallback components

A.3.1. Printing guidelines for the paper accompanying document

A.3.2. eTIR website

A.3.2.1. Access

A.3.2.2. Navigation

A.3.2.3. Graphical user interface (GUI)

B. Technical fall-backs

B.1. System duplication

B.2. Backup procedure

B.3. Backup restoration procedure
